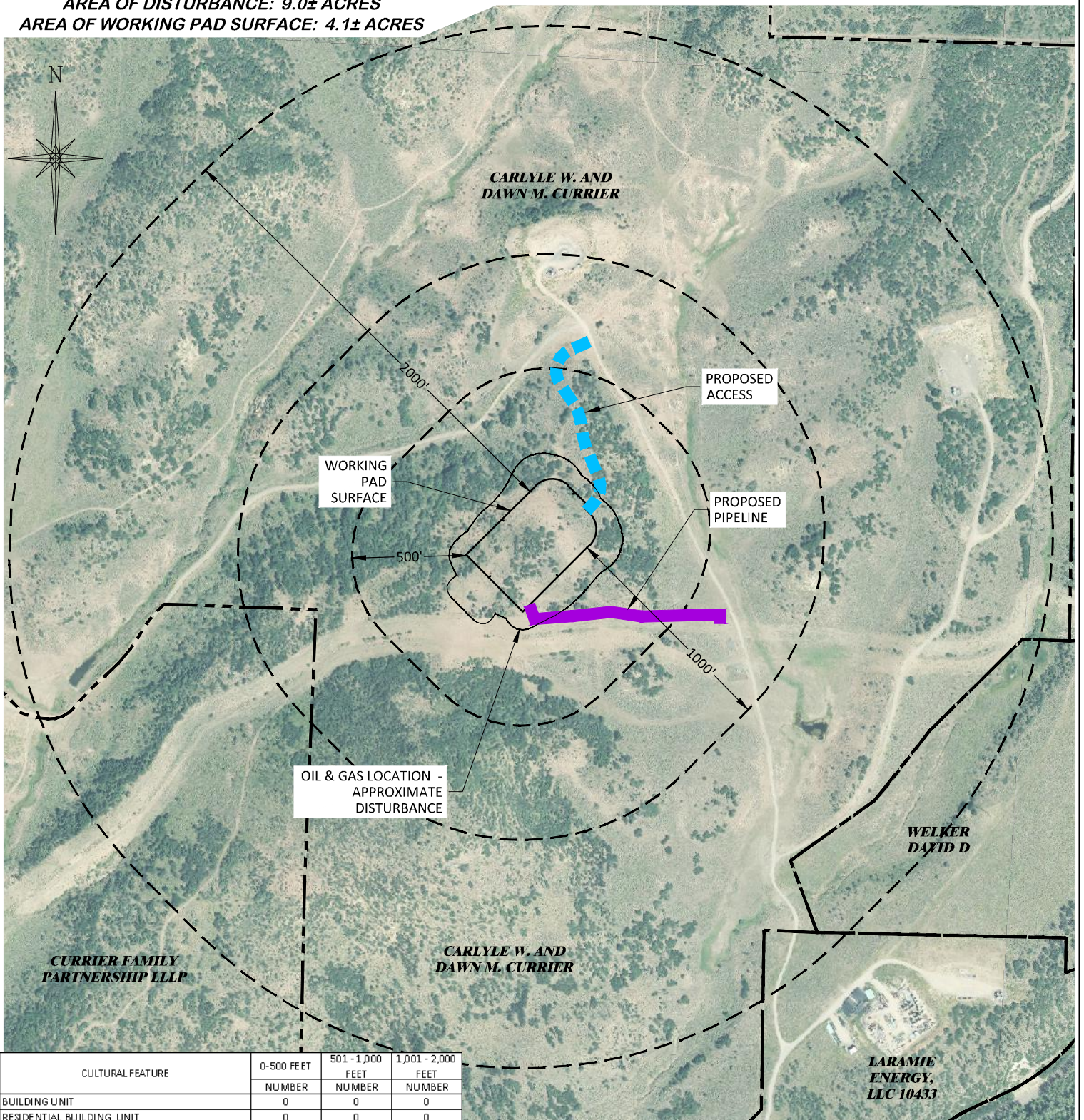


UNGRADED ELEVATION: 7461.2'
 FINAL ELEVATION: 7457.1'
 AREA OF DISTURBANCE: 9.0± ACRES
 AREA OF WORKING PAD SURFACE: 4.1± ACRES



CULTURAL FEATURE	0-500 FEET	501 - 1,000 FEET	1,001 - 2,000 FEET
	NUMBER	NUMBER	NUMBER
BUILDING UNIT	0	0	0
RESIDENTIAL BUILDING UNIT	0	0	0
HIGH OCCUPANCY BUILDING UNIT	0	0	0
SCHOOL PROPERTIES	0	0	0
SCHOOL FACILITIES	0	0	0
DESIGNATED OUTDOOR ACTIVITY AREA	0	0	0
SCHOOL WITHIN DISPROPORTIONALLY IMPACTED CD	0	0	0



CURRIER BCU 0993-16-07 PAD

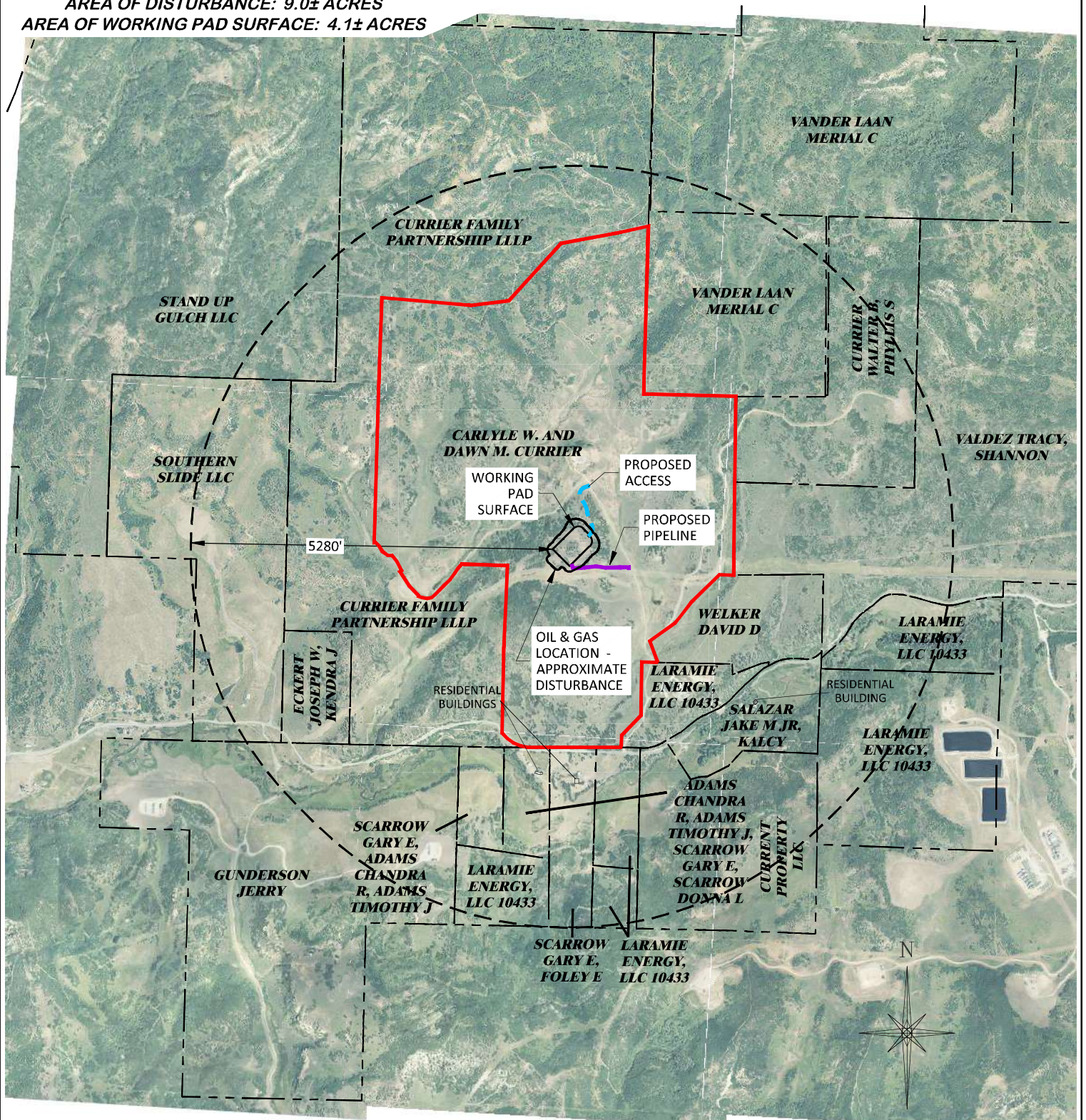
DRG RIFFIN & ASSOCIATES, INC.
 (307) 362-5028 1414 ELK ST., ROCK SPRINGS, WY 82901

DRAWN: 7/5/2023 - DEH	SCALE: 1" = 600'
REVISED: N/A	DRG JOB No. 22254
	304b(3)C CULTURAL

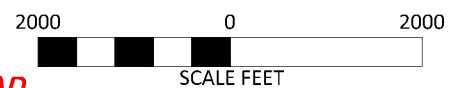
CULTURAL DISTANCES DRAWING 2 OF 2

**CULTURAL DISTANCES
 LARAMIE ENERGY, LLC
 CURRIER BCU 0993-16-07
 SWNE, SECTION 16, T. 9 S., R. 93 W., 6th P.M.,
 MESA COUNTY, COLORADO**

UNGRADED ELEVATION: 7461.2'
 FINAL ELEVATION: 7457.1'
 AREA OF DISTURBANCE: 9.0± ACRES
 AREA OF WORKING PAD SURFACE: 4.1± ACRES



--- APPROX. PROPERTY LINE
 - - - 5280' BUFFER
 ——— APPROX. SUBJECT PARCEL BOUNDARY



CURRIER BCU 0993-16-07 PAD

DRG RIFFIN & ASSOCIATES, INC.
 (307) 362-5028 1414 ELK ST., ROCK SPRINGS, WY 82901

DRAWN: 7/5/2023 - DEH	SCALE: 1" = 2000'
REVISED: N/A	DRG JOB No. 22254
304b(3)C MILE CULTURAL	

CULTURAL DISTANCES DRAWING 1 OF 2
CULTURAL DISTANCES
1-MILE RADIUS
LARAMIE ENERGY, LLC
CURRIER BCU 0993-16-07
SWNE, SECTION 16, T.9 S., R.93 W., 6th P.M.,
MESA COUNTY, COLORADO

LARAMIE ENERGY
 CURRIER BCU 0993-16-07
 SWNE SECTION 16, T9S, R93W, 6th PM
 DATE: 7/5/2023 - D. HENDERHAN
 REV: N/A

DISTANCE FROM WORKING PAD SURFACE 304b(3)A																		
	BUILDING		RESIDENTIAL BUILDING UNIT		HIGH OCCUPANCY BUILDING UNIT		SCHOOL FACILITY		DOAA		PUBLIC ROAD		ABOVE GROUND UTILITY		RAILROAD		PROPERTY LINE	
	DIRECTION	LENGTH	DIRECTION	LENGTH	DIRECTION	LENGTH	DIRECTION	LENGTH	DIRECTION	LENGTH	DIRECTION	LENGTH	DIRECTION	LENGTH	DIRECTION	LENGTH	DIRECTION	LENGTH
WPS	S	2901'	S	3052'	W 5280'		W 5280'		W 5280'		S	2960'	SE	1950'	N 5280'		SW	700'
DISTANCE FROM WORKING PAD SURFACE - DISPROPORTIONATELY IMPACTED COMMUNITY																		
	RESIDENTIAL BUILDING UNIT		HIGH OCCUPANCY BUILDING UNIT		SCHOOL FACILITY													
WPS	DIRECTION	LENGTH	DIRECTION	LENGTH	DIRECTION	LENGTH	DIRECTION	LENGTH	DIRECTION	LENGTH								
	N/A		N/A		N/A													

CULTURAL FEATURE INFORMATION 304b(3)B			
CULTURAL FEATURE	0-500 FEET	501 - 1,000 FEET	1,001 - 2,000 FEET
	NUMBER	NUMBER	NUMBER
BUILDING	0	0	0
RESIDENTIAL BUILDING UNIT	0	0	0
HIGH OCCUPANCY BUILDING UNIT	0	0	0
SCHOOL PROPERTIES	0	0	0
SCHOOL FACILITIES	0	0	0
DESIGNATED OUTDOOR ACTIVITY AREA	0	0	0
RESIDENTIAL BUILDING UNIT WITHIN A DISPOROPORTIONATLY IMPATED COMMUNITY	0	0	0
HIGH OCCUPANCY BUILDING UNIT WITHIN A DISPOROPORTIONATLY IMPATED COMMUNITY	0	0	0
SCHOOL PROPERTIES WITHIN A DISPOROPORTIONATLY IMPATED COMMUNITY	0	0	0
SCHOOL FACILITIES WITHIN A DISPOROPORTIONATLY IMPATED COMMUNITY	0	0	0
DESIGNATED OUTDOOR ACTIVITY AREA WITHIN A DISPOROPORTIONATLY IMPATED COMMUNITY	0	0	0