



**Sector Bond Log  
Gamma Ray/CCL**

Company: **CAERUS OIL AND GAS**  
 Well: **PCU T88X-21G**  
 Field: **PICEANCE CREEK**  
 County: **RIO BLANCO** State: **CO.**  
 Location: API #: **05-103-10129** Other Services:

SEC 21 TWP 2S RGE 96W  
 Permanent Datum: GL Elevation: 7330'  
 Log Measured From: GL Ft. Above PD: 0'  
 Drilling Measured From: KB G.L. 7330'

Date	11Aug 2022						
Run Number	one						
Depth Driller	3500'						
Present Depth Driller	n/a						
Depth Logger	2638'						
Bottom Logged Interval	2633'						
Top Log Interval	SURFACE						
Fluid Level	90'						
Type Fluid	water						
Max. Recorded Temp.	n/a						
Estimated Cement Top	See Log						
Equipment Number	218						
Location	Grand Junction Co.						
Recorded By	C. Burns						
Witnessed By	Mr. Pitt						
Borehole Record							
Run Number	Bit	From	To	Size	Weight	From	To
				9.625"	36#	surface	877'
				5.5"	17#	surface	3500'

<<< Fold Here >>>

All interpretations are opinions based on inferences from electrical or other measurements and we cannot and do not guarantee the accuracy or correctness of any interpretation, and we shall not, except in the case of gross or willful negligence on our part, be liable or responsible for any loss, costs, damages, or expenses incurred or sustained by anyone resulting from any interpretation made by any of our officers, agents or employees. These interpretations are also subject to our general terms and conditions set out in our current Price Schedule.

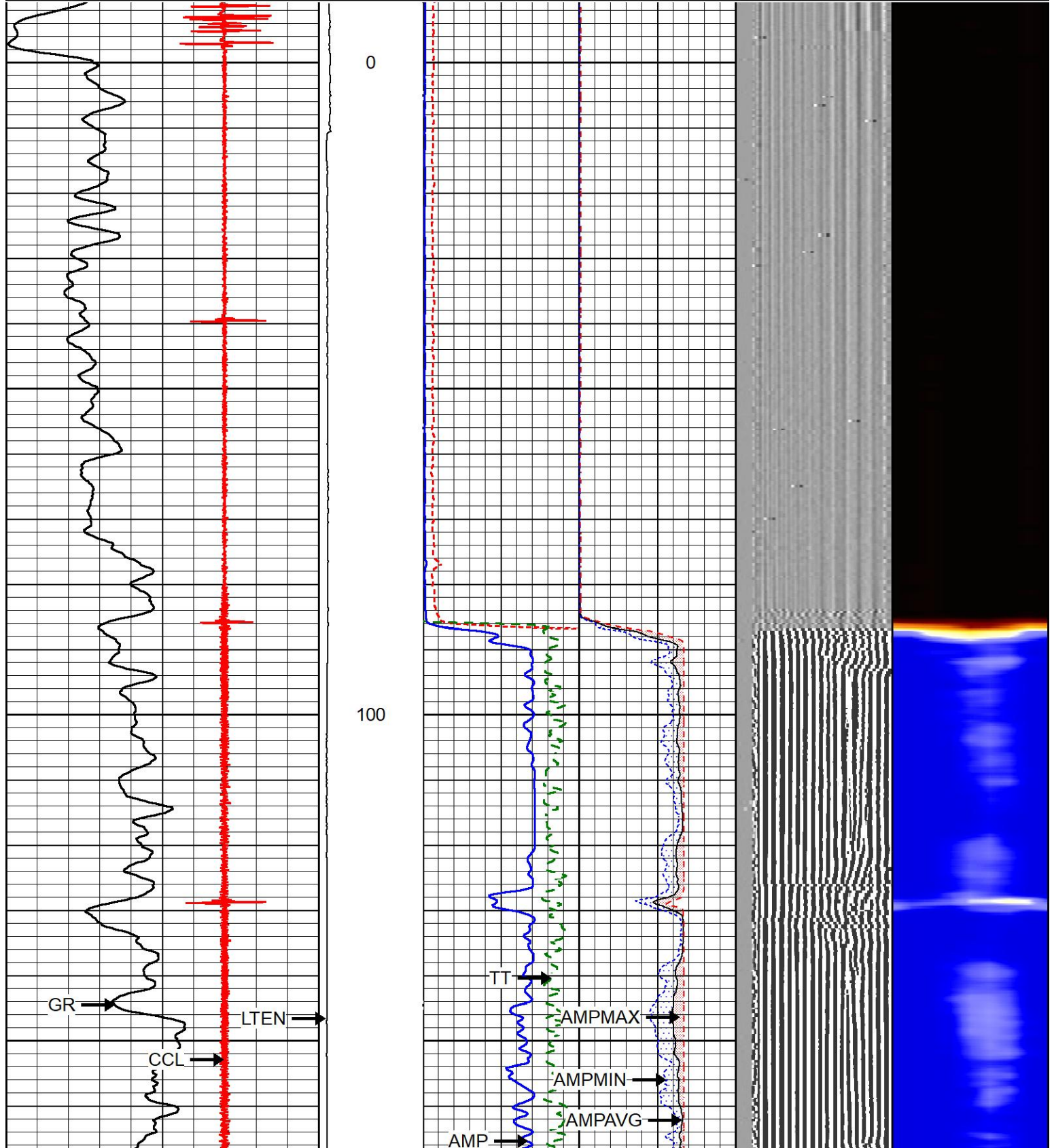
WARRIOR 7.0 SOFTWARE - Comments

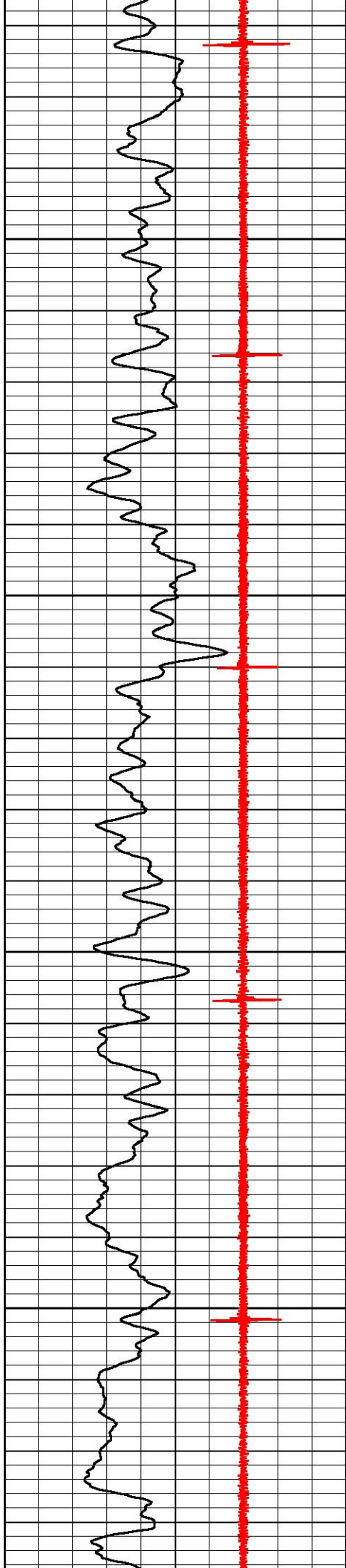


# MAIN PASS

Database File piceance creek unit t88x-21g.db  
 Dataset Pathname main/pass1.1  
 Presentation Format r\_axcbl  
 Dataset Creation Thu Aug 11 14:33:16 2022  
 Charted by Depth in Feet scaled 1:240

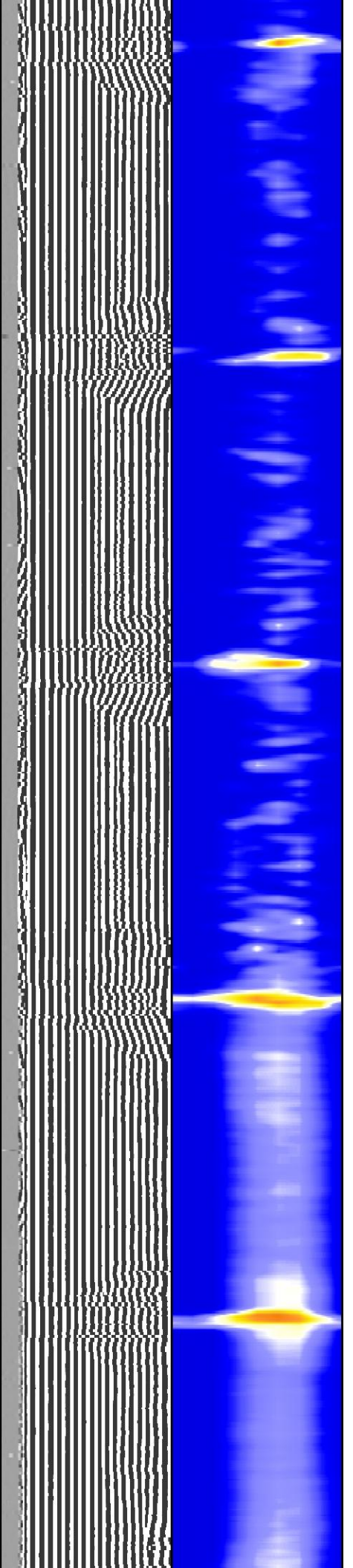
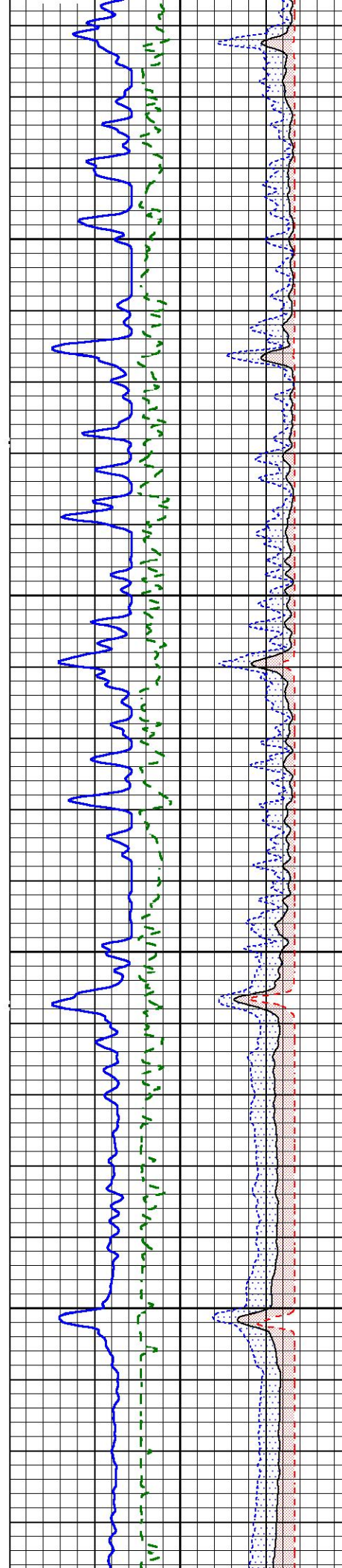
7	CCL	-3	LTEN	0	AMP (mV) 100	0	AMPAVG 150	VDL	SECTOR MAP
0	GR	150	0 (lb4200)	AMPx5	0	AMPMAX 150	200 (usec) 1200	1	8
				0 (mV) 20	0	AMPMIN 150			
				TT					
				380 (usec) 180					

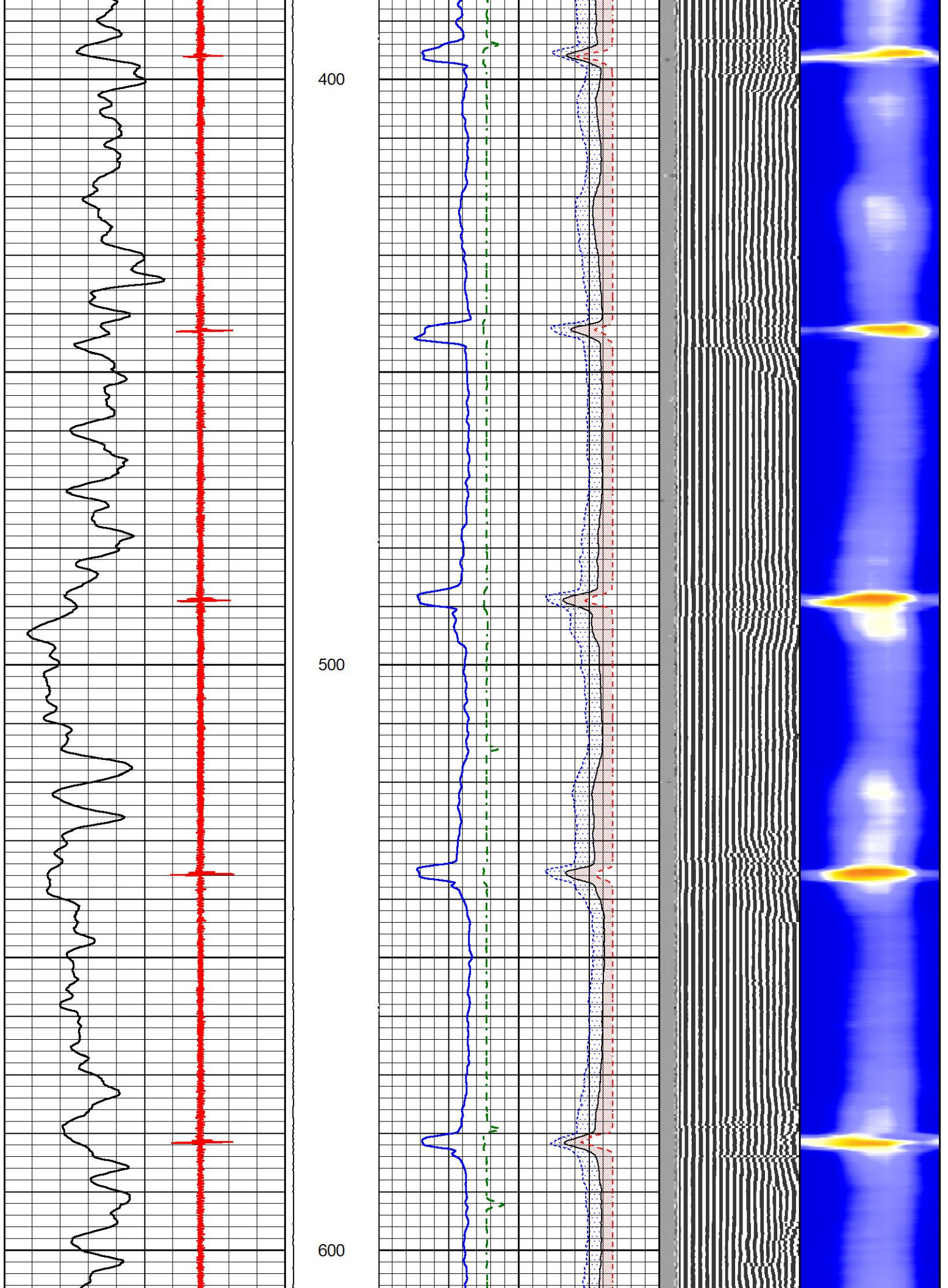


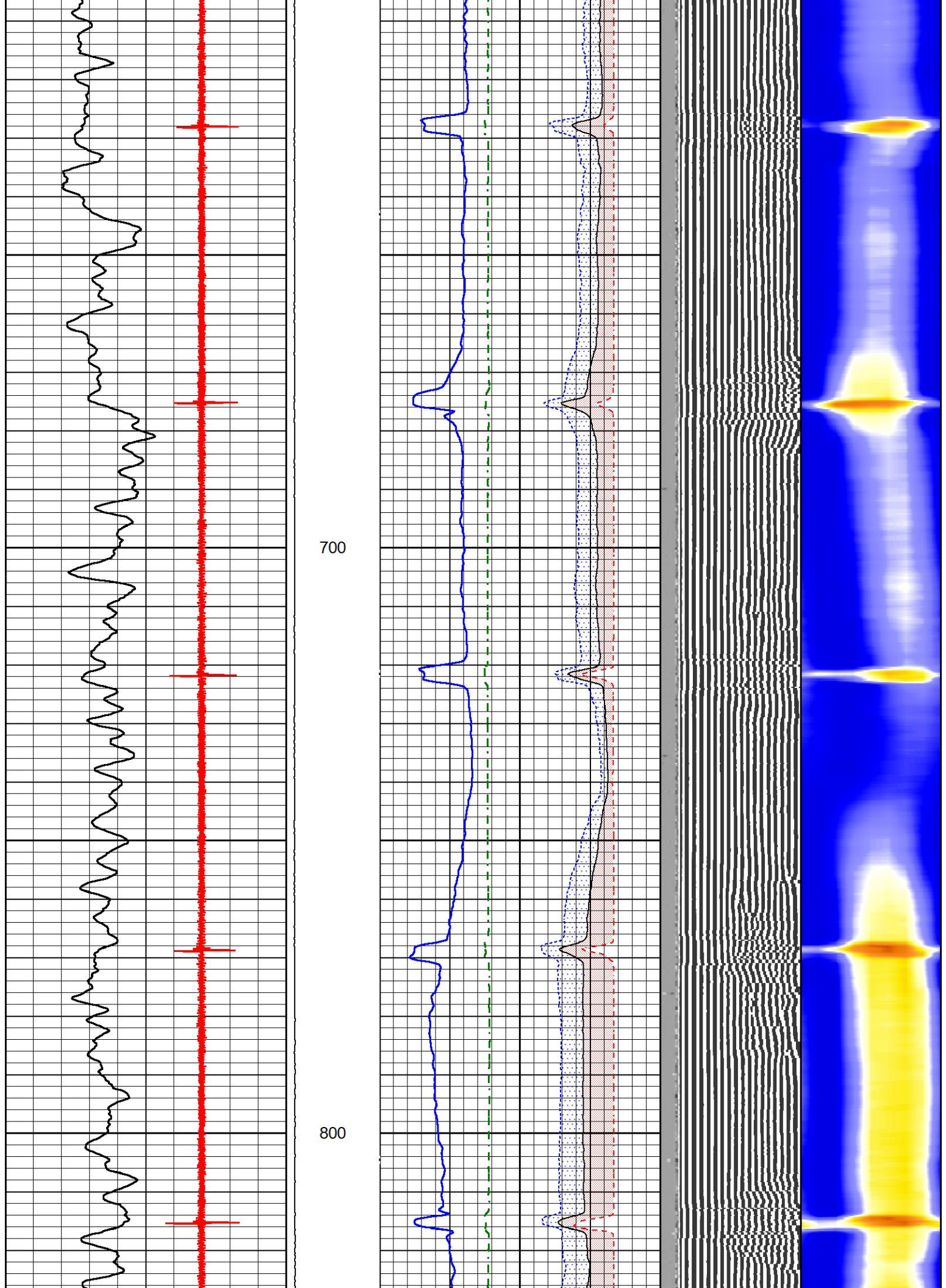


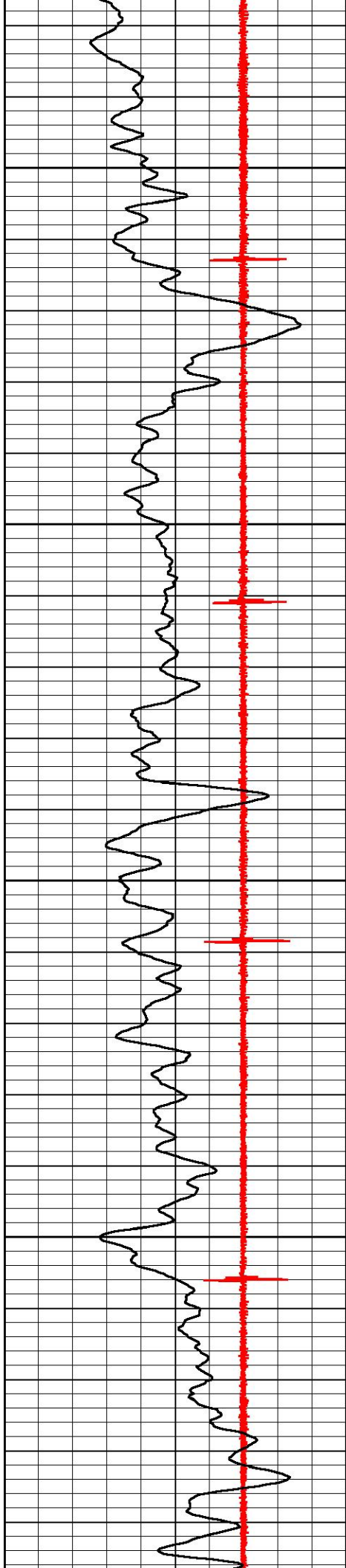
200

300



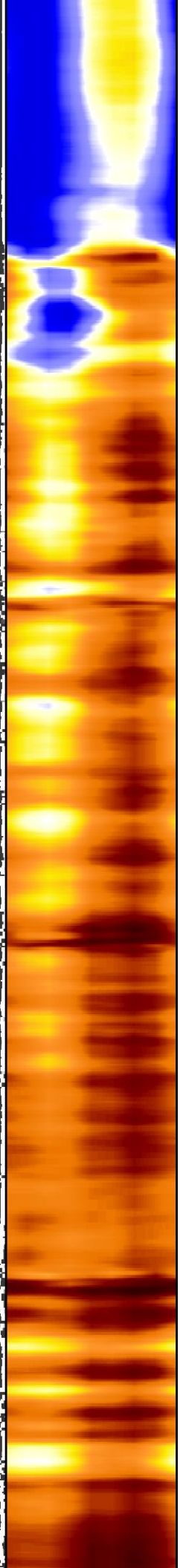
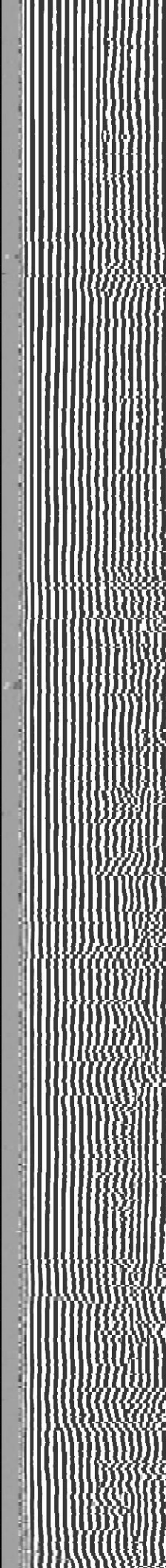
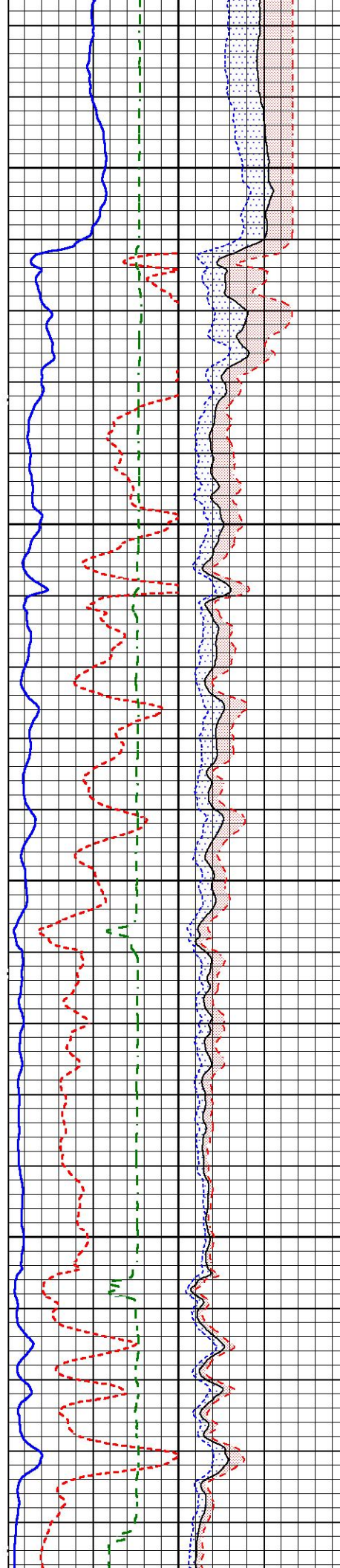


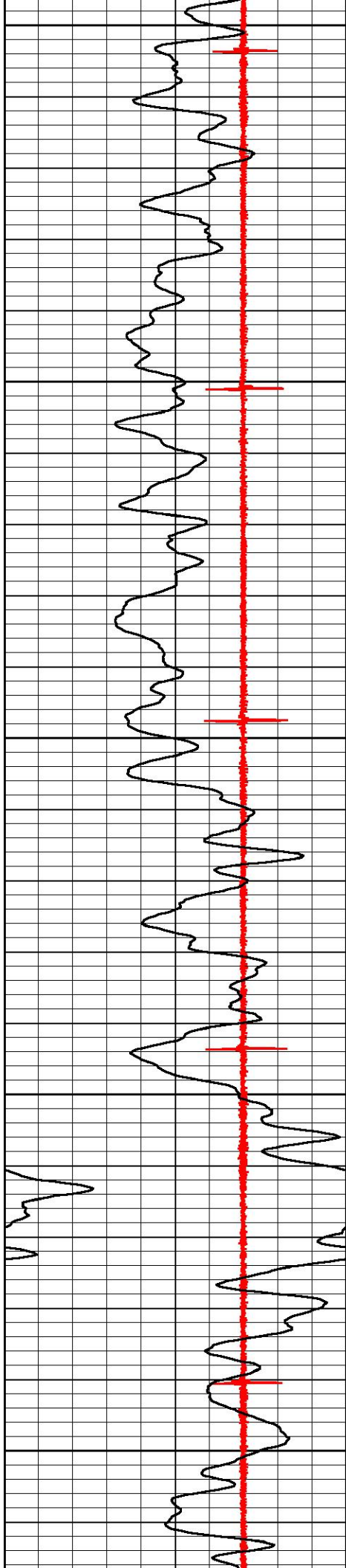




900

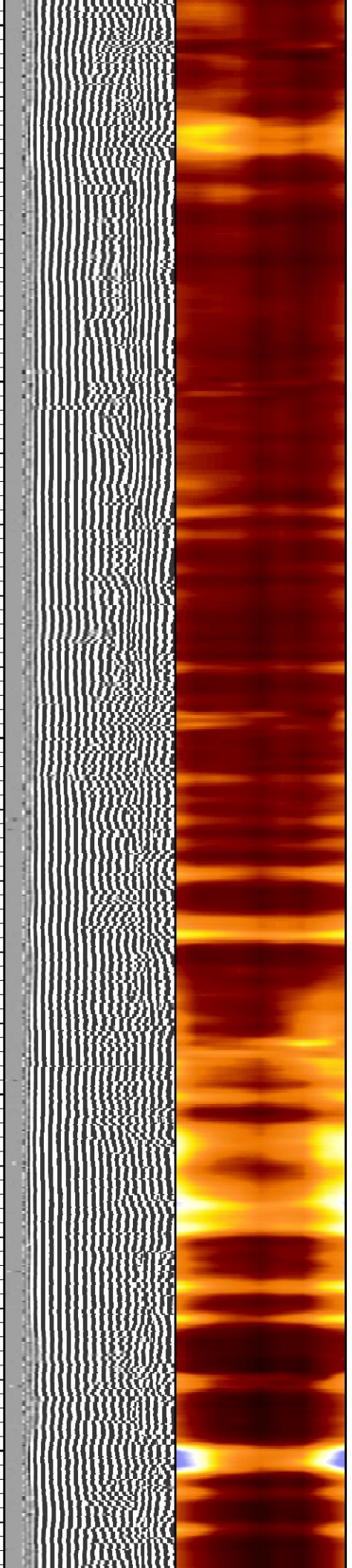
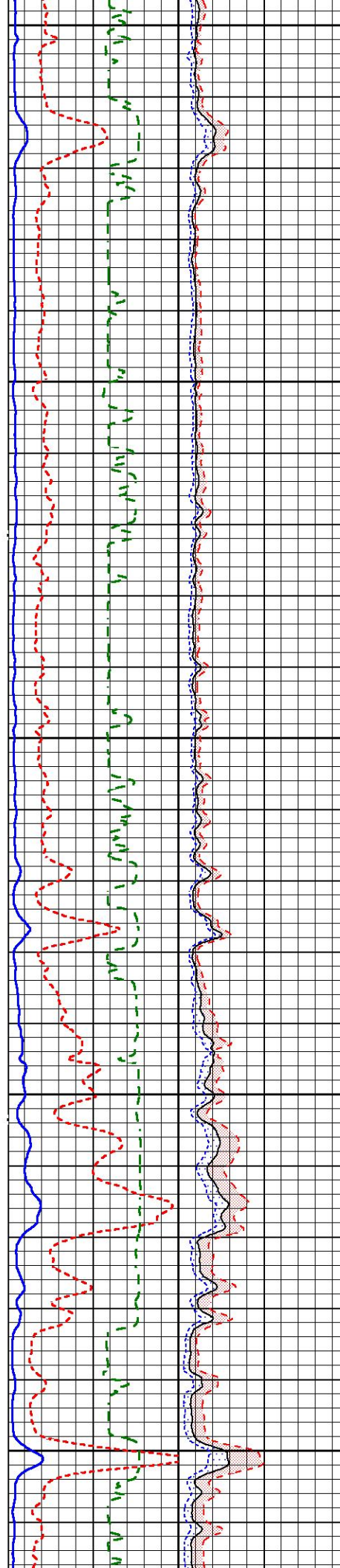
1000

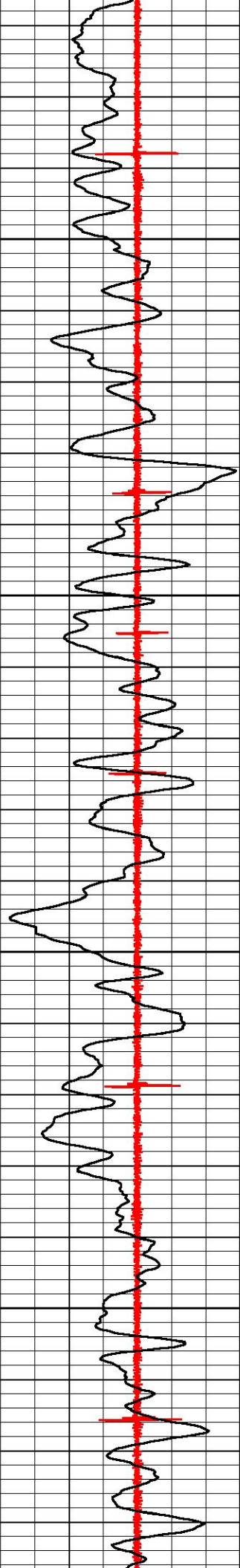




1100

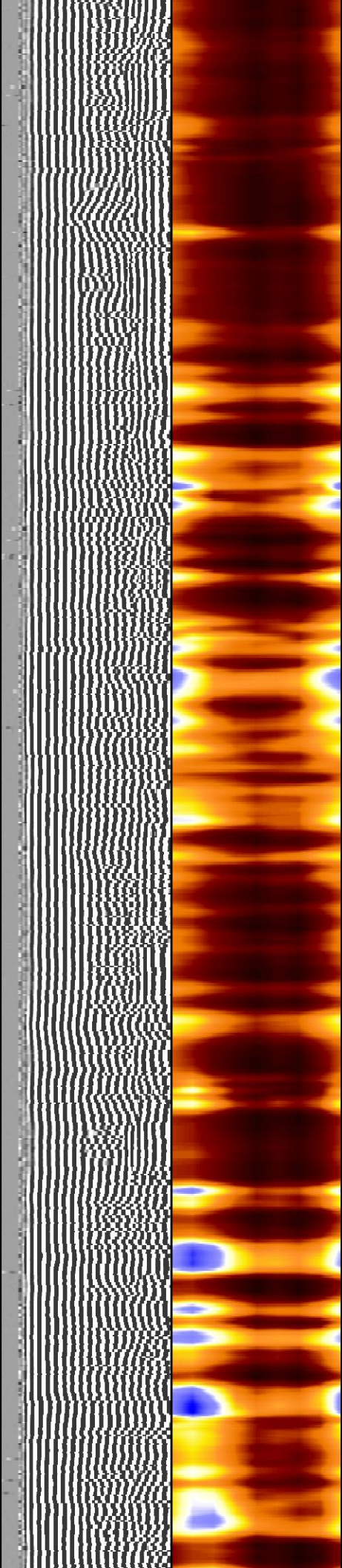
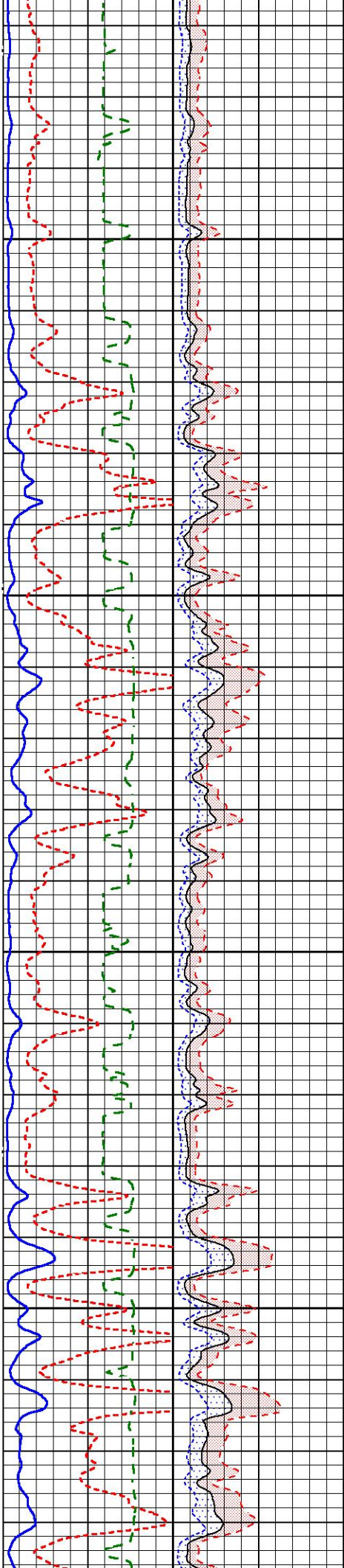
1200

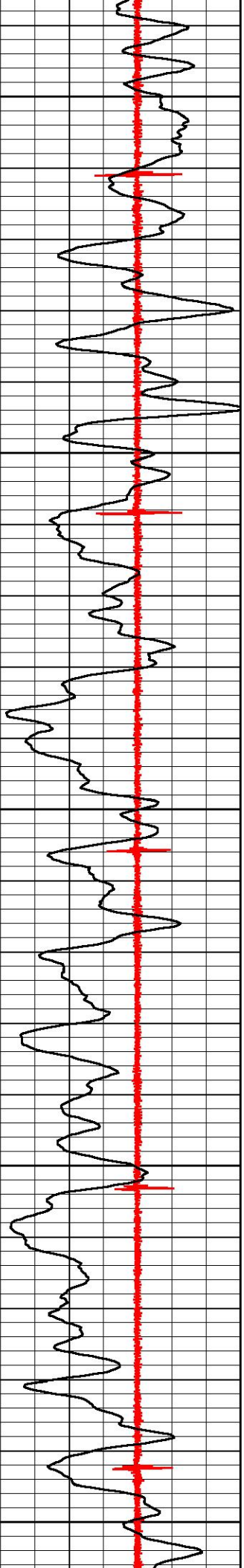




1300

1400

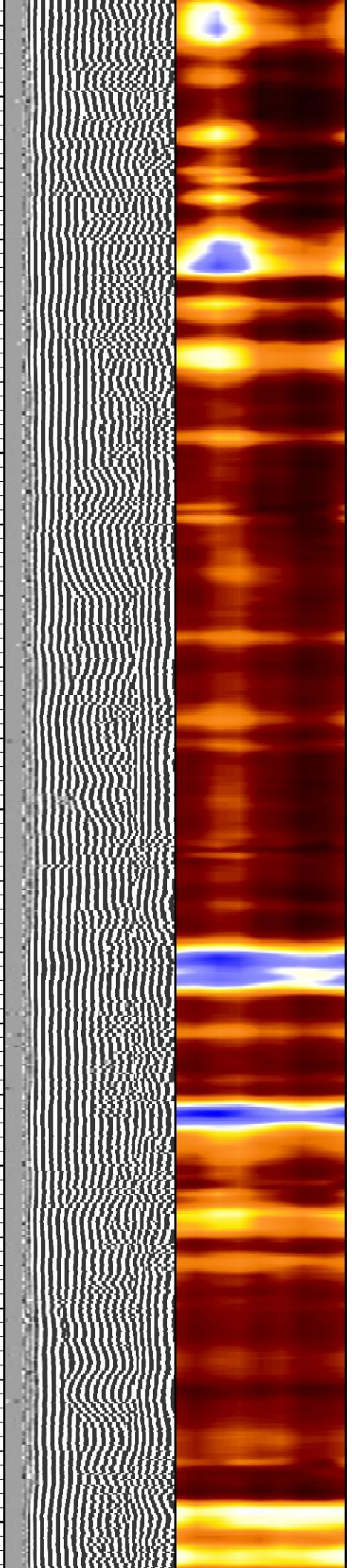
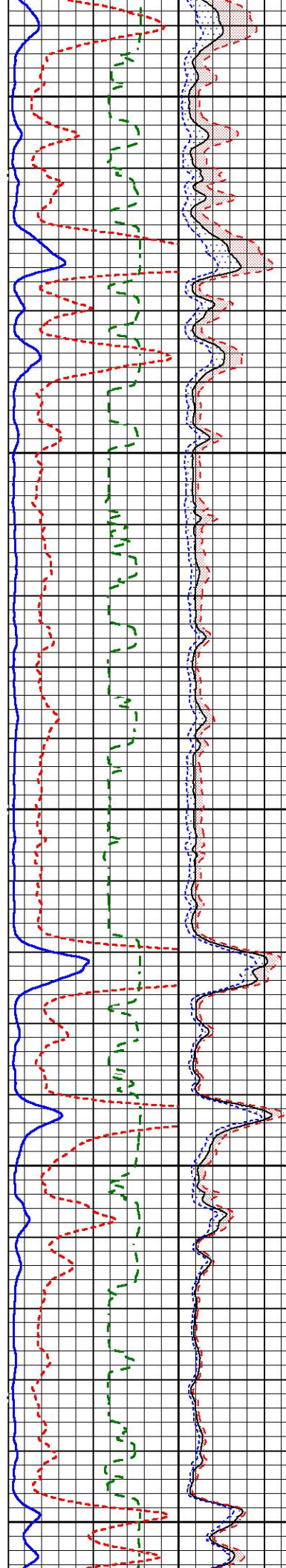


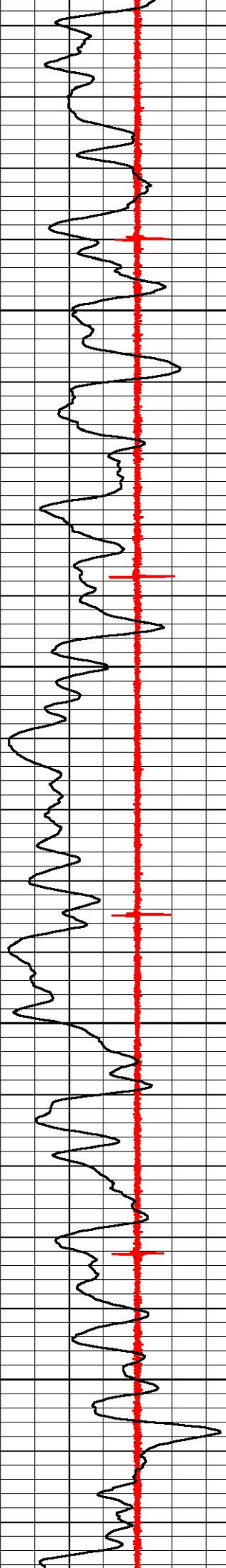


1500

1600

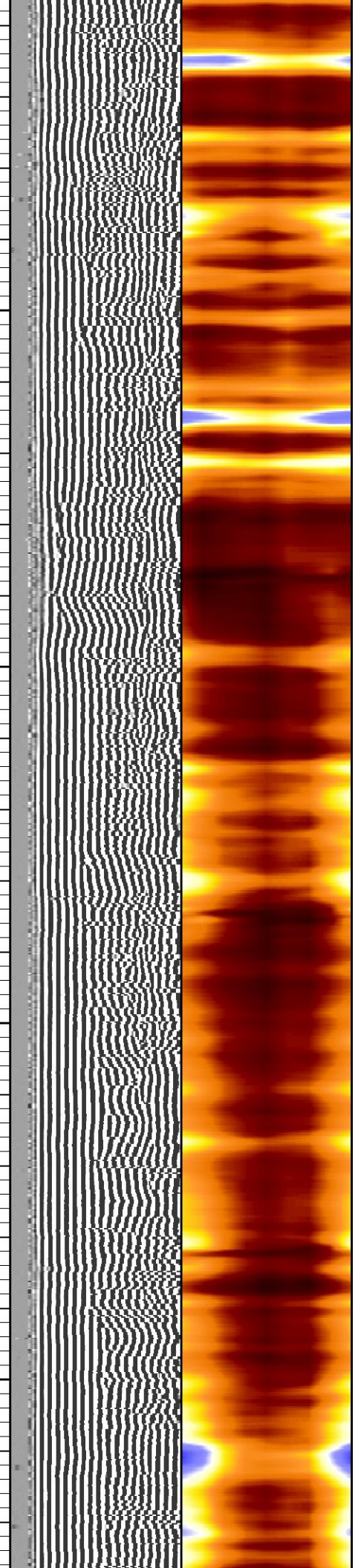
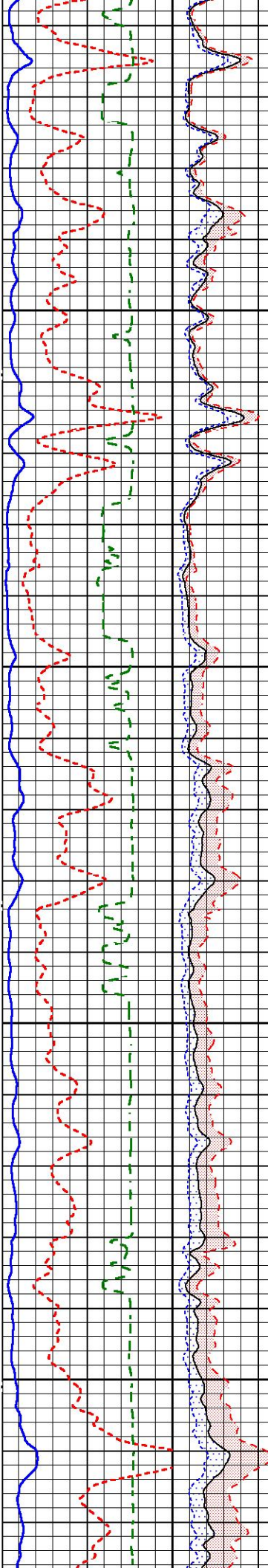
1700

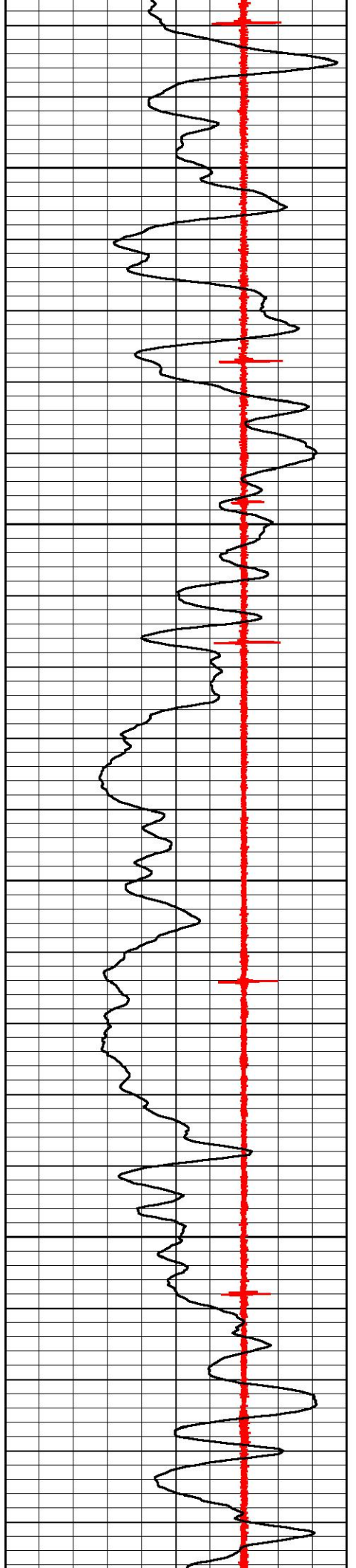




1800

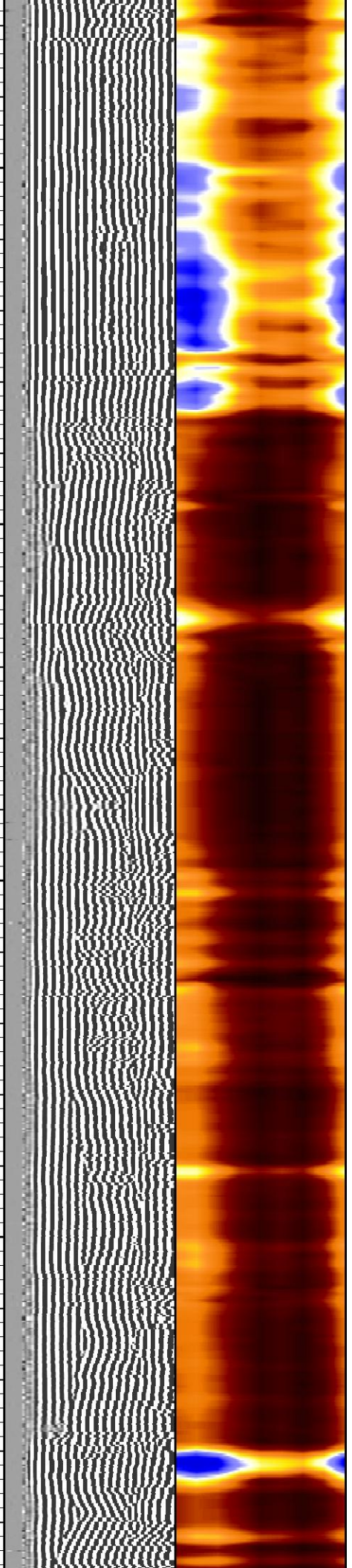
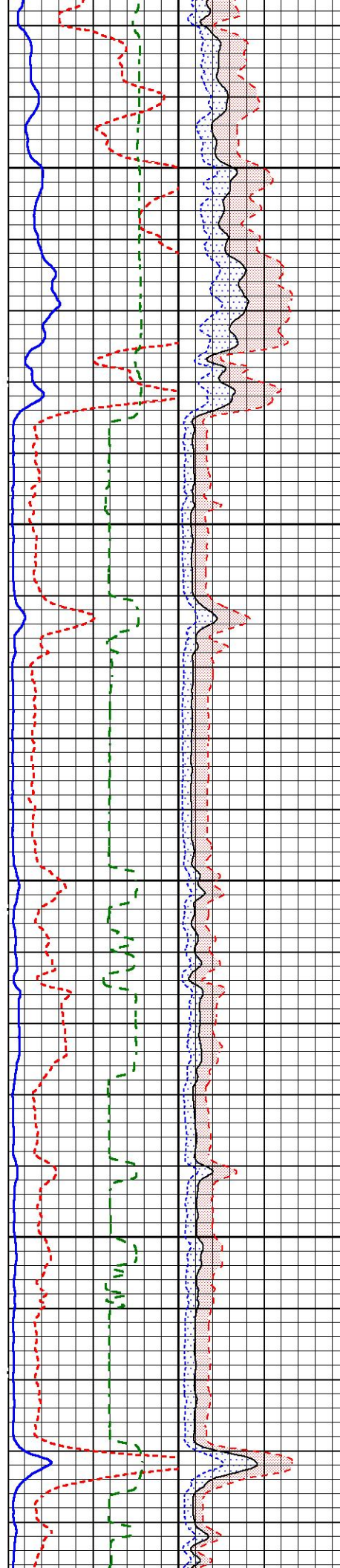
1900

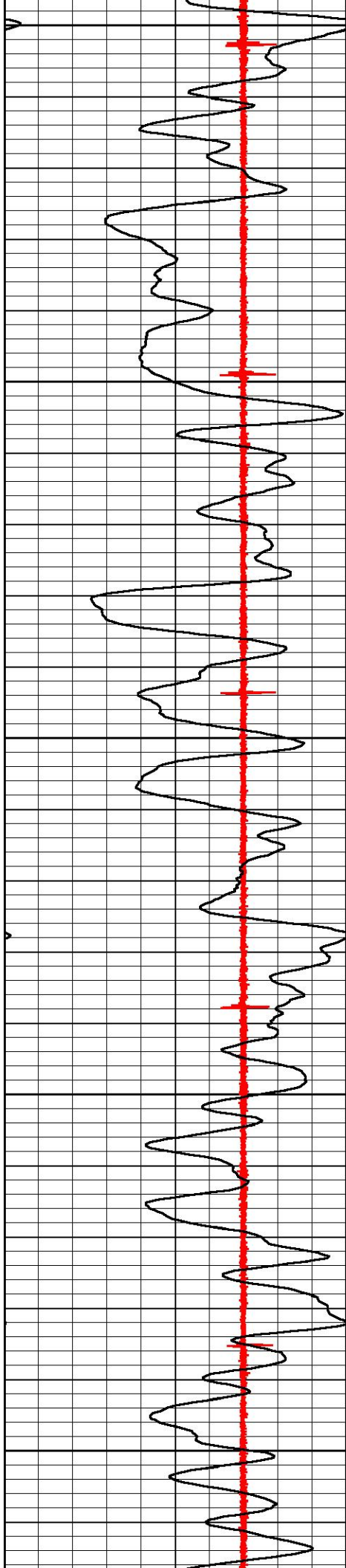




2000

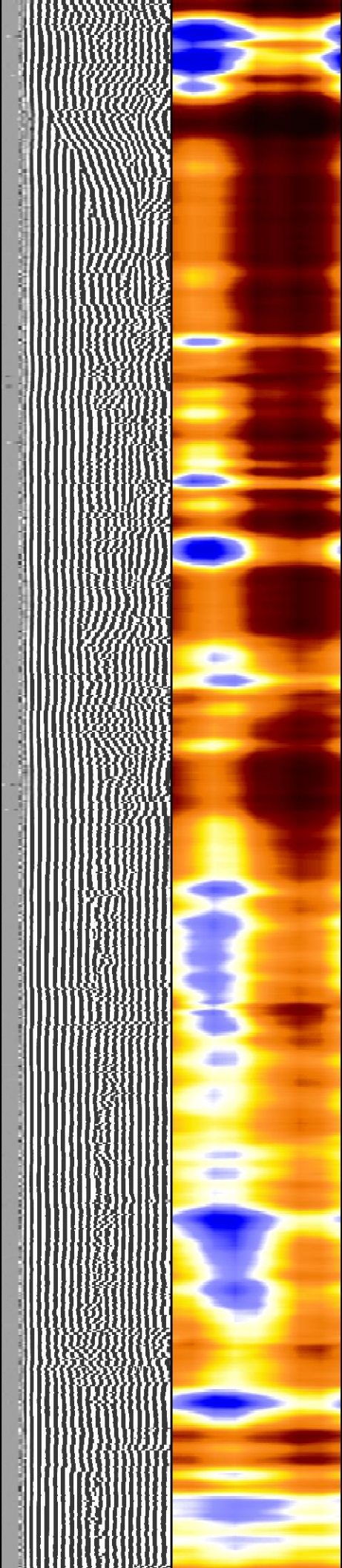
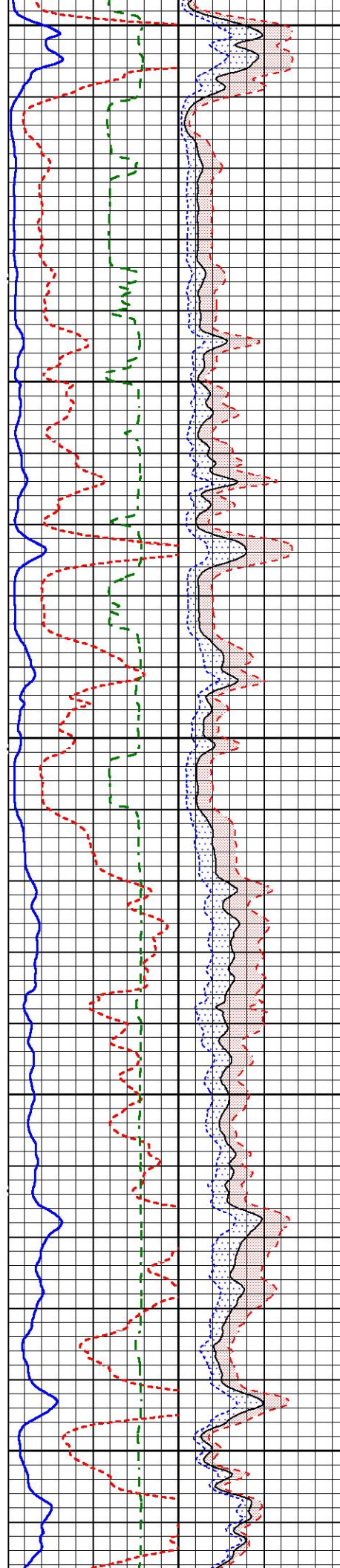
2100

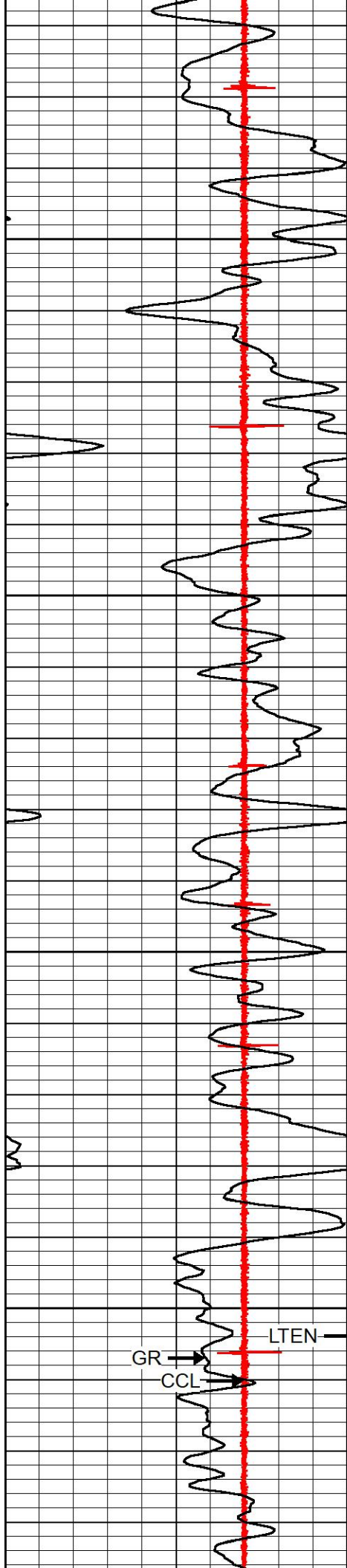




2200

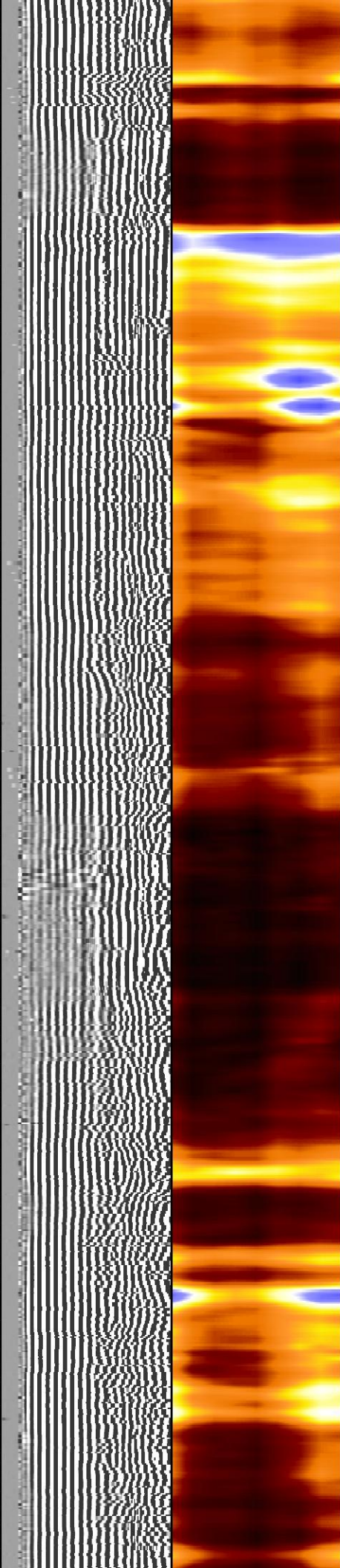
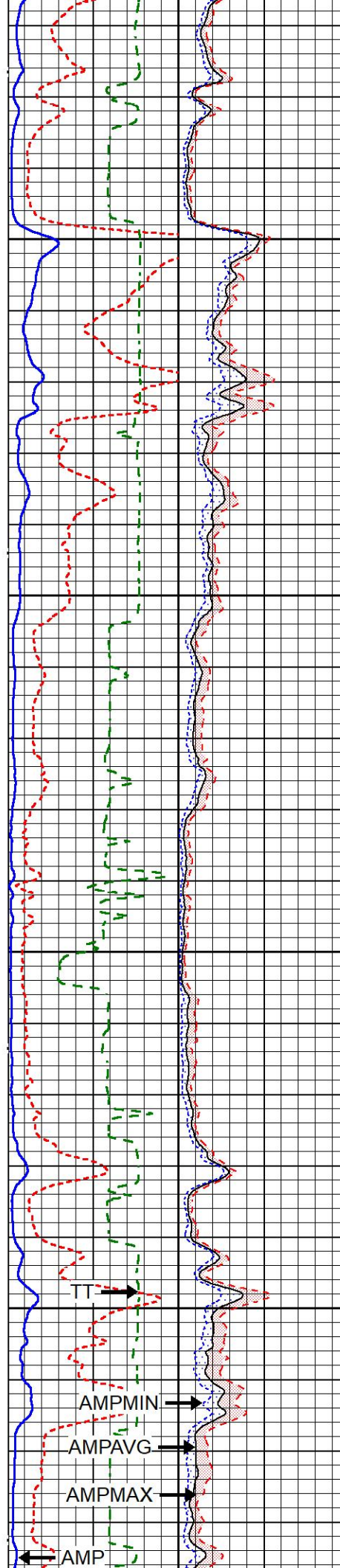
2300

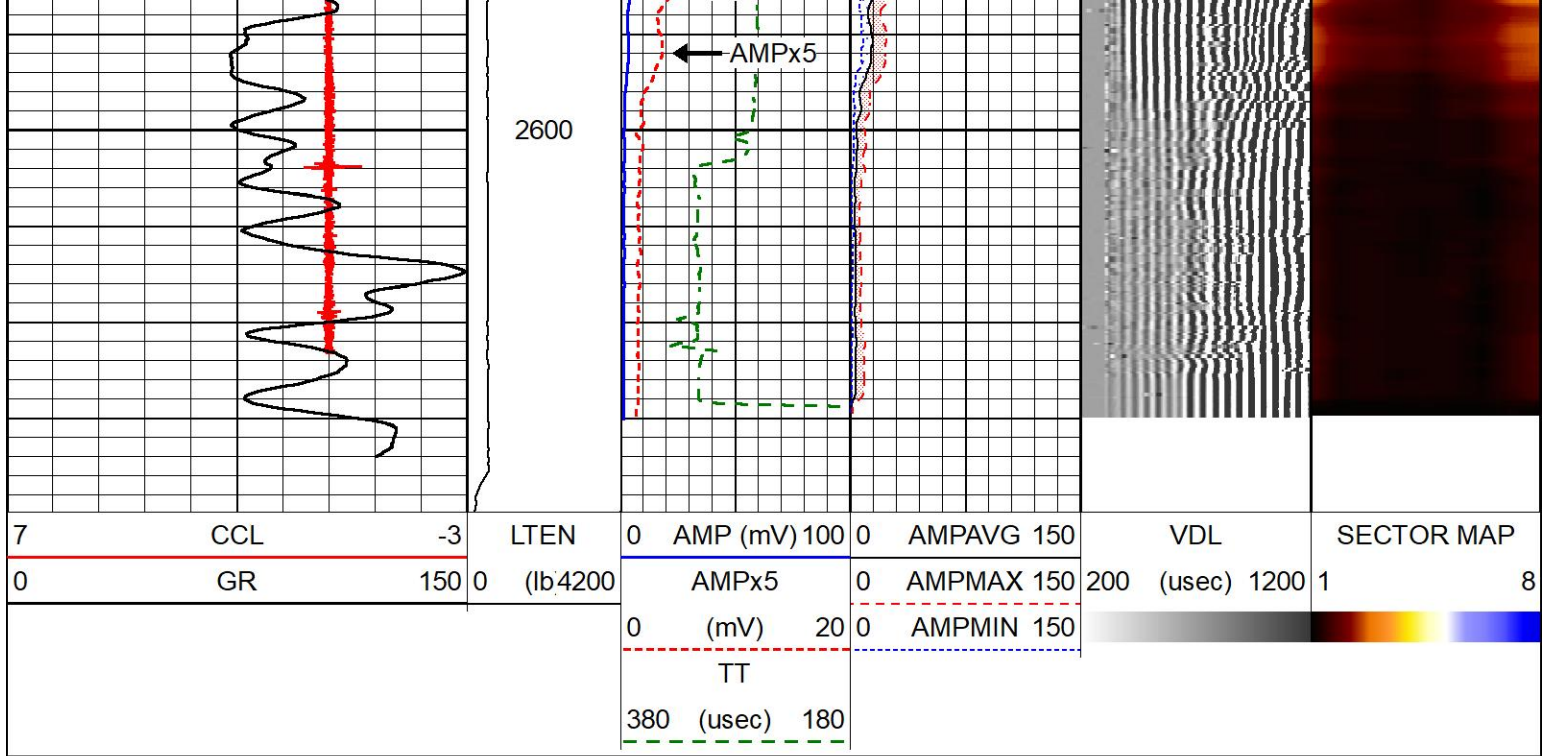




2400

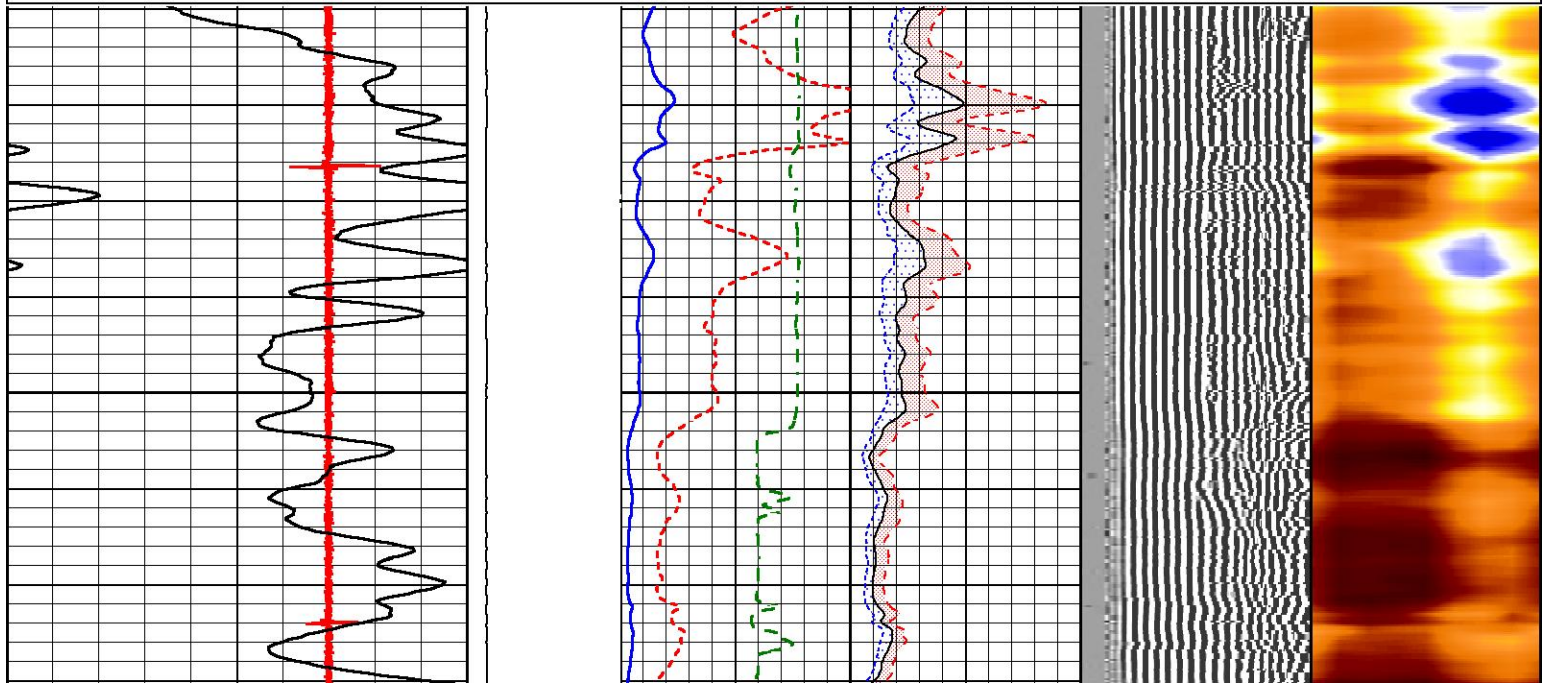
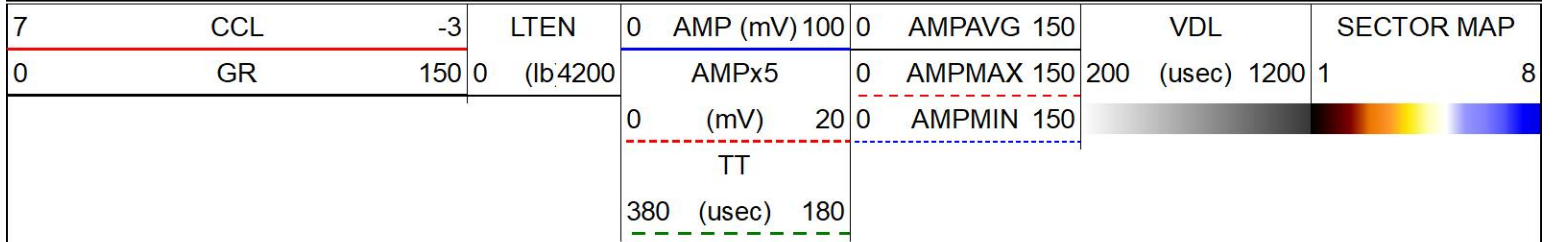
2500

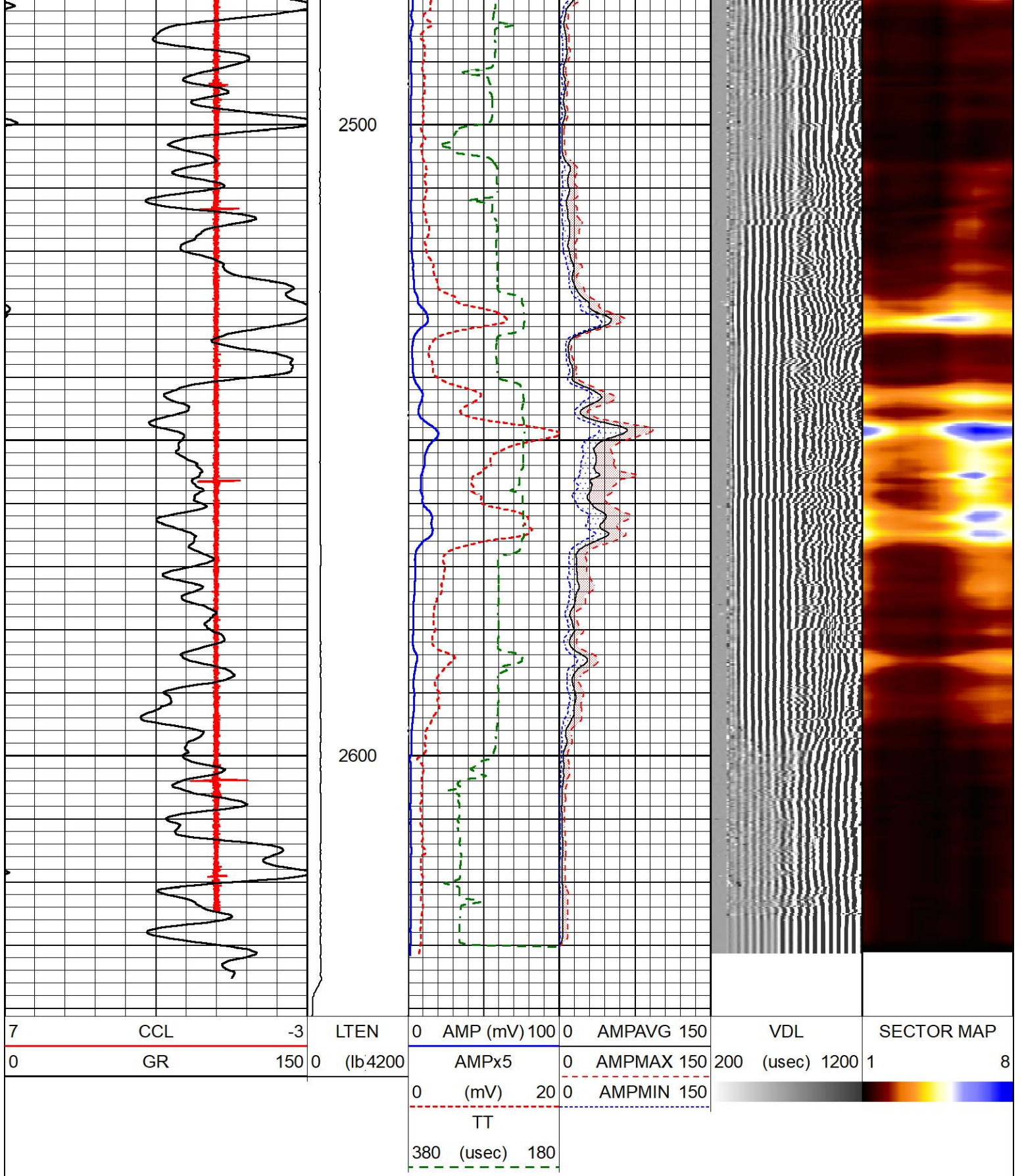




# REPEAT PASS

Database File piceance creek unit t88x-21g.db  
 Dataset Pathname repeat/pass1  
 Presentation Format r\_axcbl  
 Dataset Creation Thu Aug 11 13:46:09 2022  
 Charted by Depth in Feet scaled 1:240





## Log Variables

Database: C:\ProgramData\Warrior\Data\piceance creek unit t88x-21g.db  
 Dataset: field/well/main/pass1/\_vars\_

### Top - Bottom

BOREID	BOTTEMP	CASEOD	CASETHCK	CASEWGHT	MAXAMPL	MINAMPL	MINATTN
in	degF	in	in	lb/ft	mV	mV	db/ft
7.875	100	5.5	0	17	0	1	0.8

PERFS	PPT usec	SRFTEMP degF	TDEPTH ft
No	0	0	0

### Variable Description

BOREID : Borehole I.D.	CASEWGHT : Casing Weight	PERFS : Perforation Flag
BOTTEMP : Bottom Hole Temperature	MAXAMPL : Maximum Amplitude	PPT : Predicted Pipe Time
CASEOD : Casing O.D.	MINAMPL : Minimum Amplitude	SRFTEMP : Surface Temperature
CASETHCK : Casing Thickness	MINATTN : Minimum Attenuation	TDEPTH : Total Depth

### Calibration Report

Database File piceance creek unit t88x-21g.db  
Dataset Pathname main/pass1.1  
Dataset Creation Thu Aug 11 14:33:16 2022

### Segmented Cement Bond Log Calibration Report

Serial Number: TEKCO234\_3024  
Tool Model: TEKCO

Calibration Casing Diameter: 5.500 in  
Calibration Depth: 210.404 ft

#### Master Calibration, performed (Derived):

	Raw (v)		Calibrated (mv)		Results	
	Zero	Cal	Zero	Cal	Gain	Offset
3'	-0.013	2.500	1.000	71.921	28.218	1.376
CAL	-0.016	1.988				
5'	-0.057	2.500	1.000	71.921	27.731	2.593
SUM						
S1	-0.025	2.500	0.000	100.000	39.607	0.981
S2	0.000	2.500	0.000	100.000	40.000	-0.000
S3	0.000	2.500	0.000	100.000	40.000	-0.000
S4	-0.017	2.500	0.000	100.000	39.723	0.691
S5	-0.024	2.500	0.000	100.000	39.624	0.941
S6	-0.017	2.493	0.000	100.000	39.838	0.689
S7	-0.024	2.499	0.000	100.000	39.637	0.949
S8	-0.045	2.500	0.000	100.000	39.294	1.764

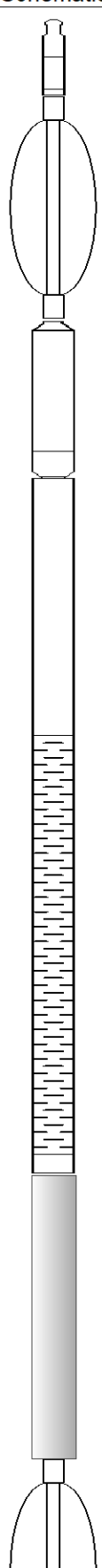
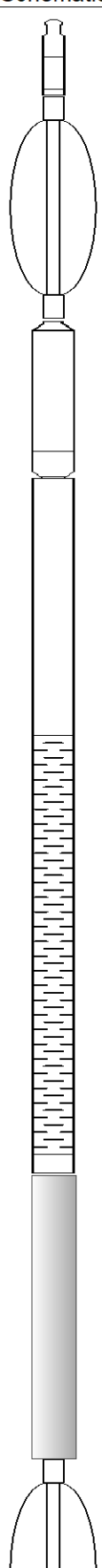
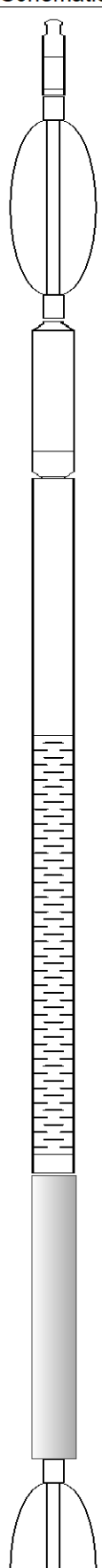
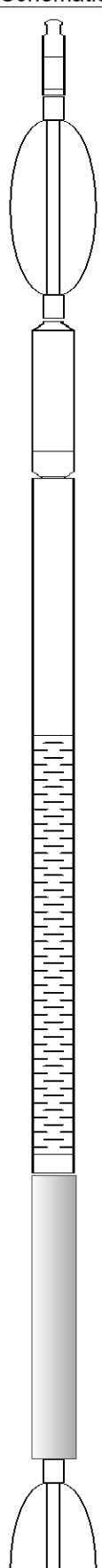
#### Internal Reference Calibration, performed Tue Feb 05 14:47:36 2008:

	Raw (v)		Calibrated (v)		Results	
	Zero	Cal	Zero	Cal	Gain	Offset
CAL	0.000	0.000	-0.016	1.988	1.000	0.000

#### Air Zero Calibration, performed Mon Apr 19 17:04:13 2010:

	Raw (v)		Calibrated (v)		Results	
	Zero		Zero		Offset	
3'	0.000		0.000			0.000
5'	0.000		0.000			0.000
SUM						
S1	0.000		0.000			0.000
S2	0.000		0.000			0.000

S2	0.000	0.000	0.000
S3	0.000	0.000	0.000
S4	0.000	0.000	0.000
S5	0.000	0.000	0.000
S6	0.000	0.000	0.000
S7	0.000	0.000	0.000
S8	0.000	0.000	0.000

Sensor	Offset (ft)	Schematic	Description	Length (ft)	O.D. (in)	Weight (lb)
CCL	16.52		CHD-STNDRD Standard Cable Head	1.00	1.43	2.00
			CENT-TITAN_234 TITAN 2 3/4" BOWSPRING CENT	2.94	2.75	25.00
			CCL-APPLIED (Applied_2.75)	2.02	2.75	34.00
WVFS8	11.63		SCBLTEKCO-TEKCO (TEKCO234_3024) Tekco 2 3/4" Radial Bond	9.08	2.75	50.00
WVFS7	11.63					
WVFS6	11.63					
WVFS5	11.63					
WVFS4	11.63					
WVFS3	11.63					
WVFS2	11.63					
WVFS1	11.63					
WVF3FT	10.88					
WVF5FT	9.88					
WVFSYNC	6.63		GR-TEKCO234 (TEKCO234_314) Tekco 2 3/4" Gamma Ray	3.69	2.75	20.00
WVFCAL	6.63					
GR	3.94		CENT-TITAN_234 TITAN 2 3/4" BOWSPRING CENT	2.94	2.75	25.00

Dataset:	piceance creek unit t88x-21g.db: field/well/main/pass1.1
Total length:	21.67 ft
Total weight:	156.00 lb
O.D.:	2.75 in



Company	CAERUS OIL AND GAS
Well	PCU T88X-21G
Field	PICEANCE CREEK
County	RIO BLANCO
State	CO.