



CCLV/DL
 GAMMA RAY
 CEMENT BOND LOG

Company CHEVRON
 Well SHABLE 14-22
 Field WATTENBERG
 County WELD State CO
 Location: API #: 05-123-28014
 Other Services

Permanent Datum GL Elevation 4814'
 Log Measured From GL K.B. 4827'
 Drilling Measured From KB D.F. 4826'
 G.L. 4814'

Date 8/9/2023
 Run Number 1
 Depth Driller 9150'
 Depth Logger 835'
 Bottom Logged Interval 824'
 Top Log Interval SURFACE
 Open Hole Size 8.75"
 Type Fluid H2O
 Density / Viscosity 8.3#
 Max. Recorded Temp. N/A
 Estimated Cement Top SEE LOG
 Time Well Ready 730AM
 Time Logger on Bottom 810AM
 Equipment Number UNIT 523
 Location GREENELEY.CO
 Recorded By K STICKLEY
 Witnessed By D NAVA

Borehole Record				Tubing Record			
Run Number	Bit	From	To	Size	Weight	From	To

Casing Record	Size	Mgt/Ft	Top	Bottom
Surface String	9.625"	36#	13'	784.3'
Prot. String				
Production String	4.5"	11.6#	13'	9115'
Liner				

<<< Fold Here >>>

All interpretations are opinions based on inferences from electrical or other measurements and we cannot and do not guarantee the accuracy or correctness of any interpretation, and we shall not, except in the case of gross or willful negligence on our part, be liable or responsible for any loss, costs, damages, or expenses incurred or sustained by anyone resulting from any interpretation made by any of our officers, agents or employees. These interpretations are also subject to our general terms and conditions set out in our current Price Schedule.

Comments

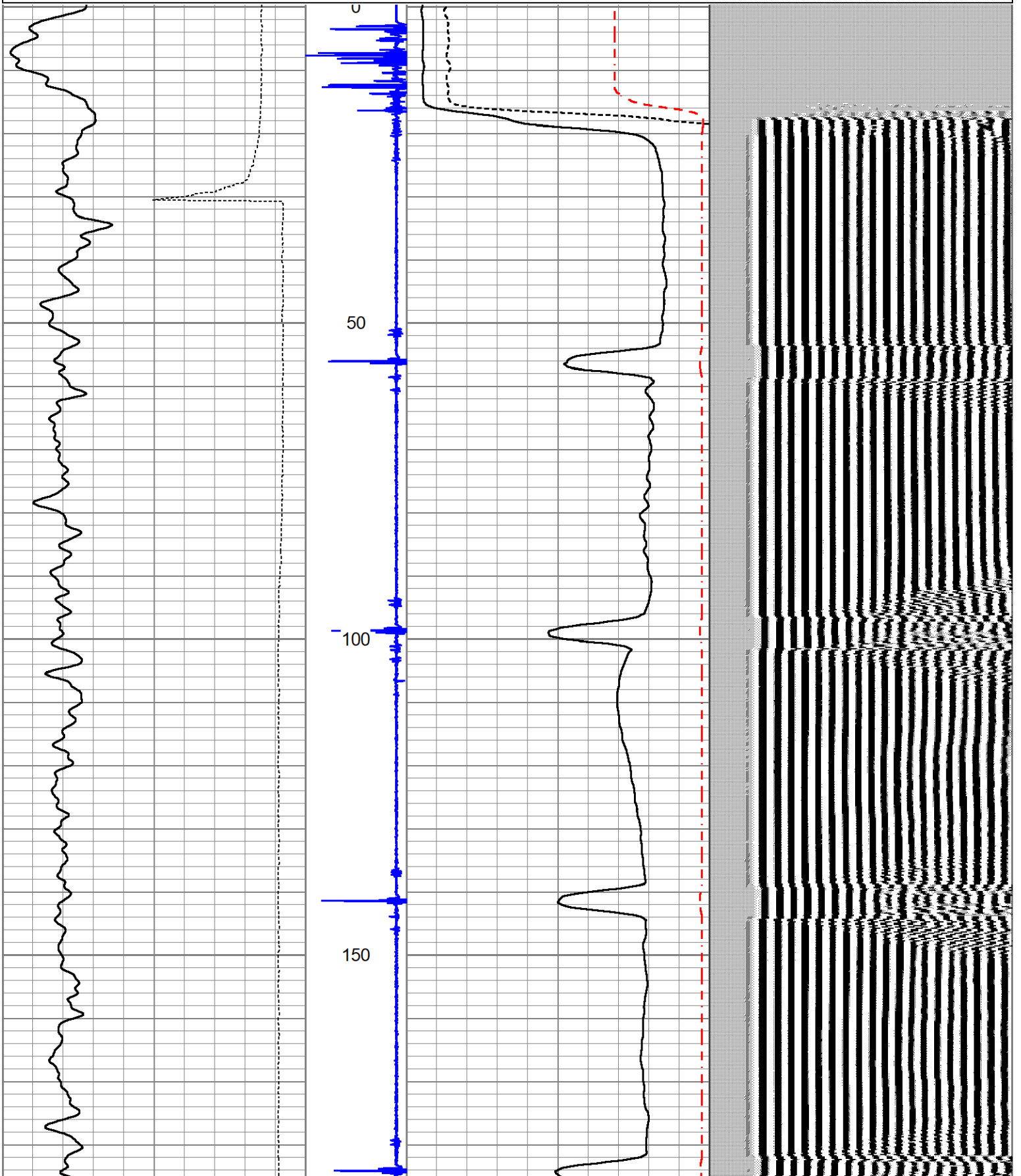
LOG RAN PER CUSTOMER REQUEST
 ZERO SURFACE INDUCED PRESSURE
 TAGGED CEMENT INSIDE CASING @835'
 THANK YOU FOR CHOOSING A-PLUS P&A LLC.

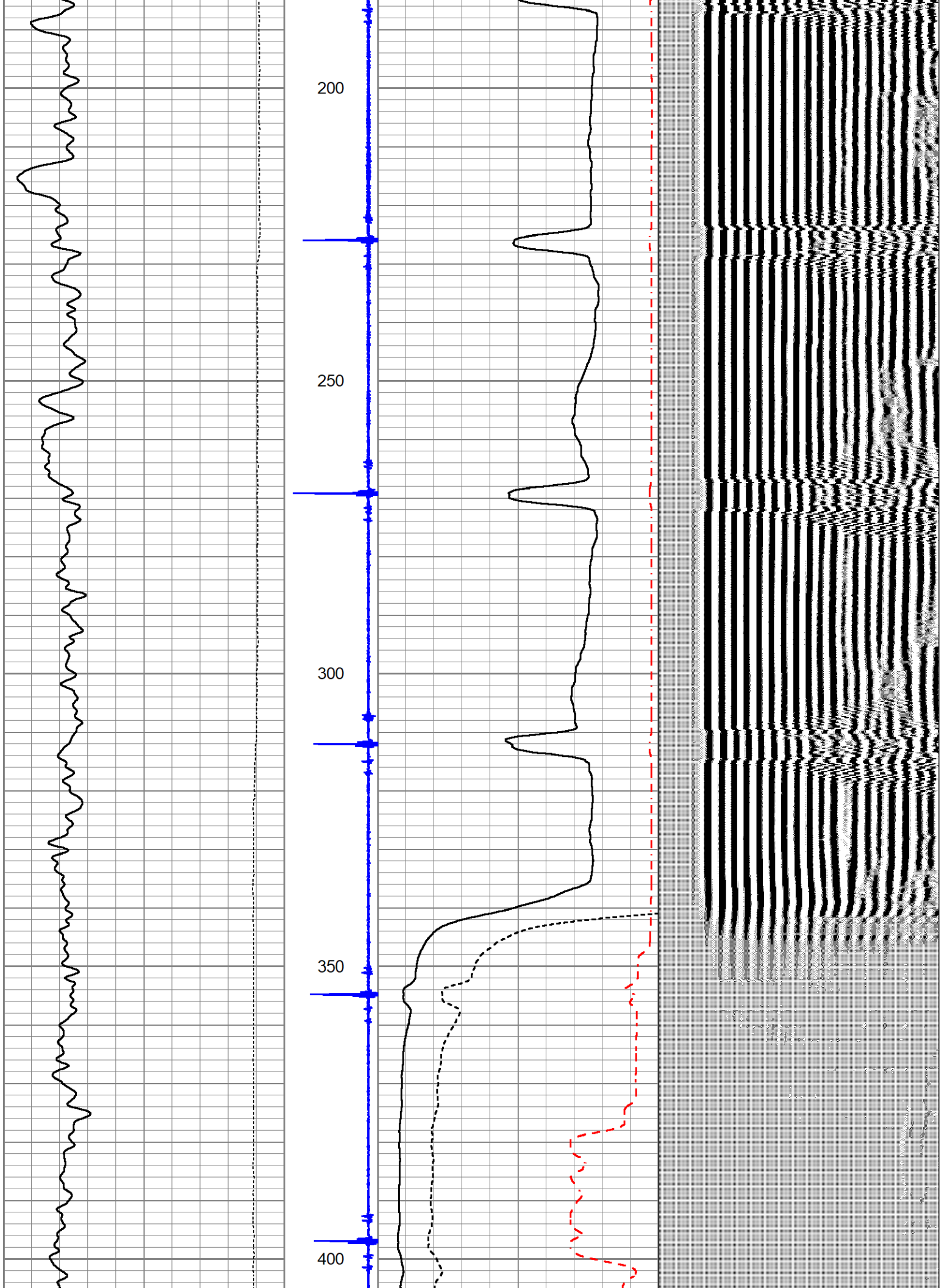


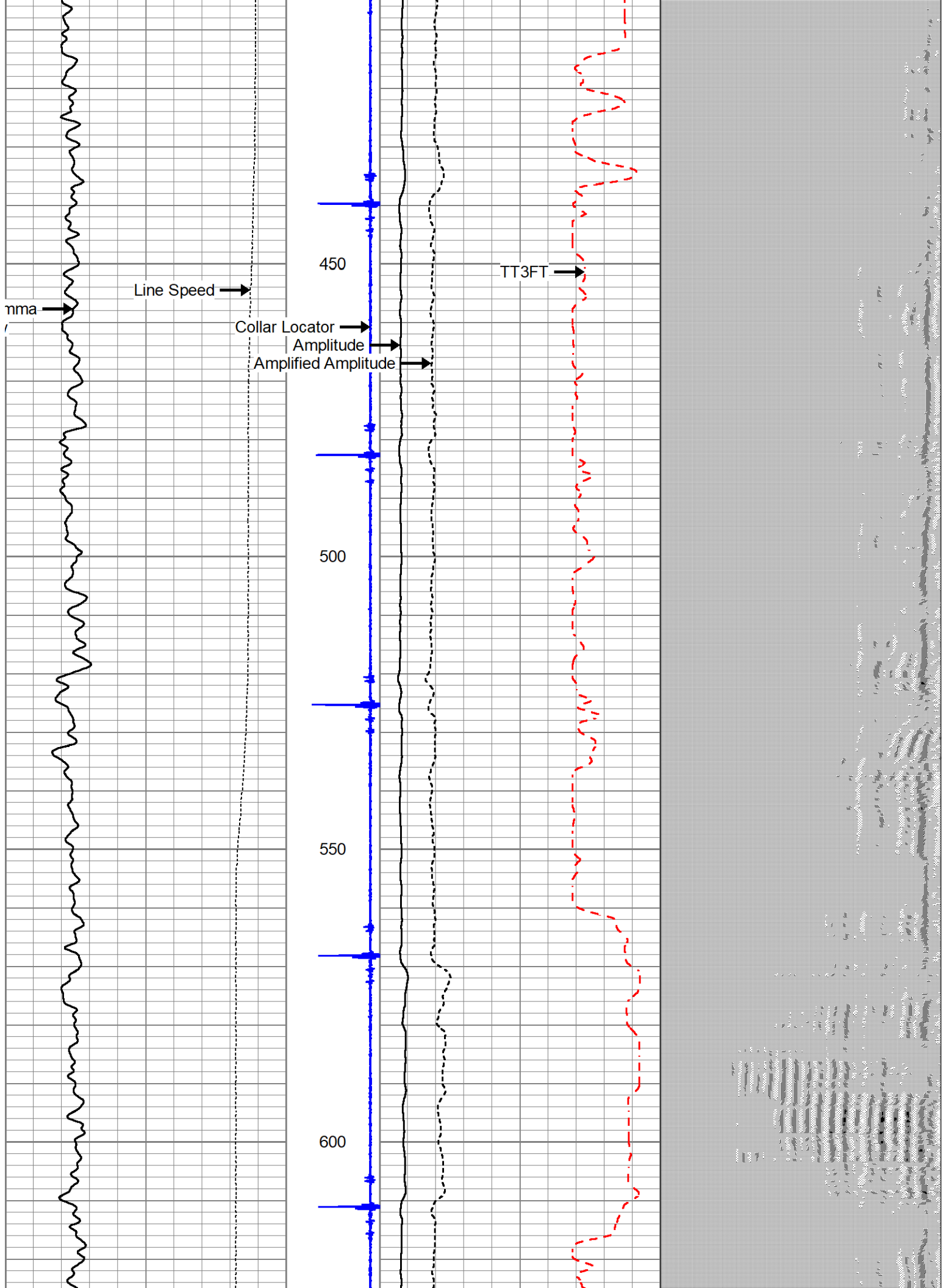
MAIN PASS

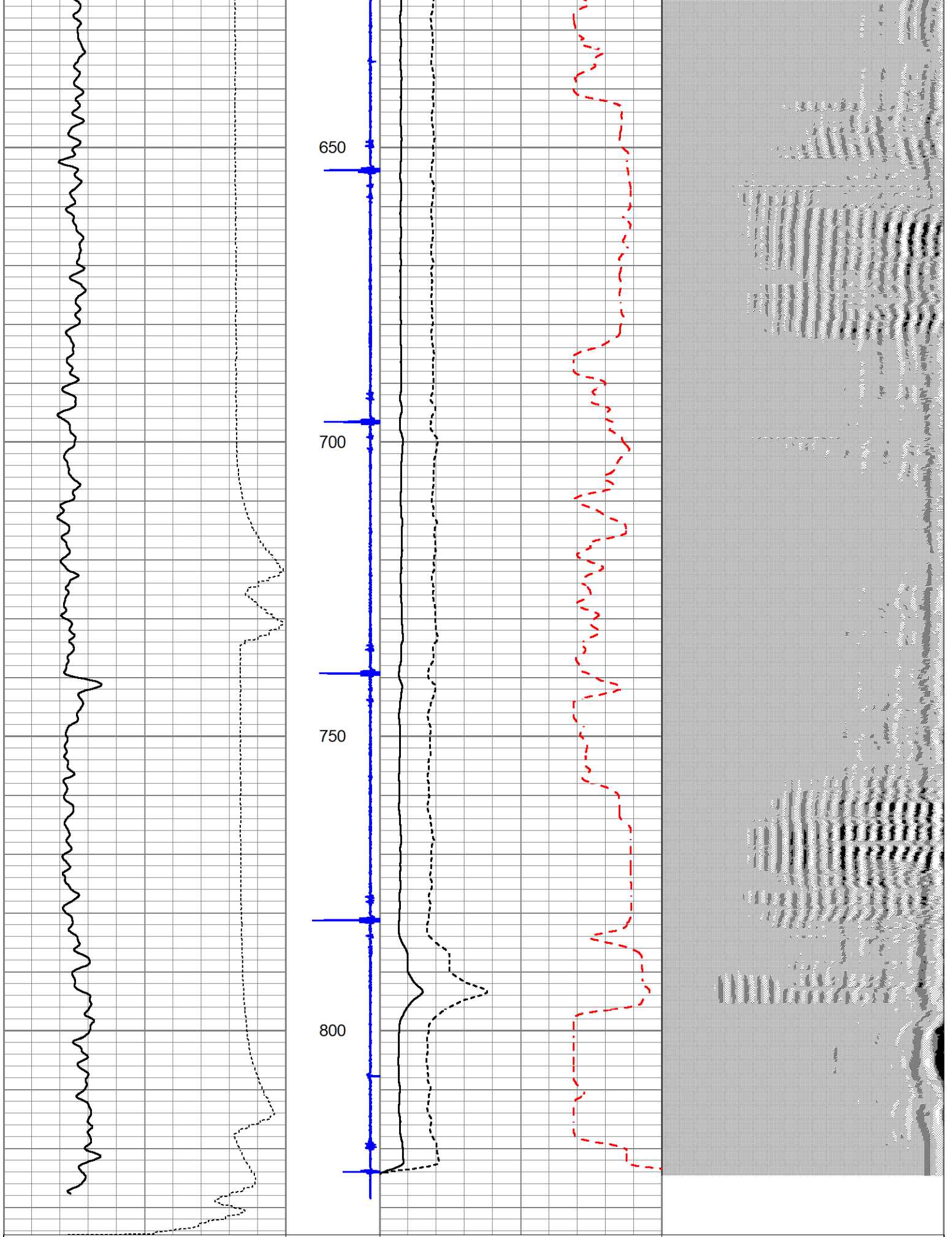
Database File chevron_shable_14-22_cbl.db
 Dataset Pathname rig3(523)/well/run1/pass6
 Presentation Format cbl_dr
 Dataset Creation Wed Aug 09 08:19:15 2023
 Charted by Depth in Feet scaled 1:240

0	Gamma Ray (GAPI)	250	Collar Location	0	Amplified Amplitude (mV)	40	200	VDL (usec)	1200
50	Line Speed (ft/min)	-50	-9	1	0	Amplitude (mV)	100		
					1200	TT3FT (usec)	200		









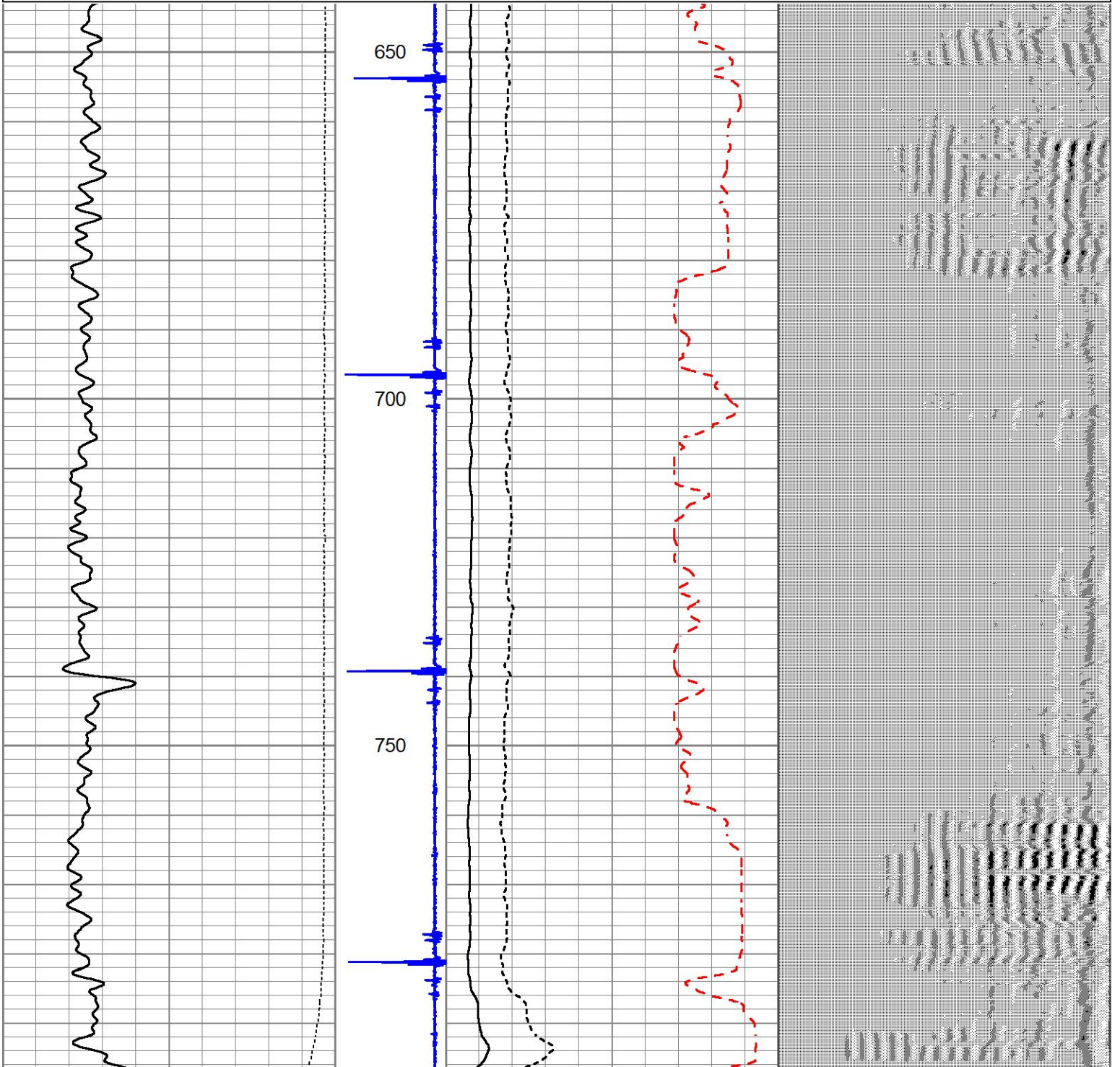
0	Gamma Ray (GAPI)	250	Collar Location (ft)	0	Amplified Amplitude (mV)	40	200	VDL (usec)	1200
50	Line Speed (ft/min)	-50	-9	1	0	100			

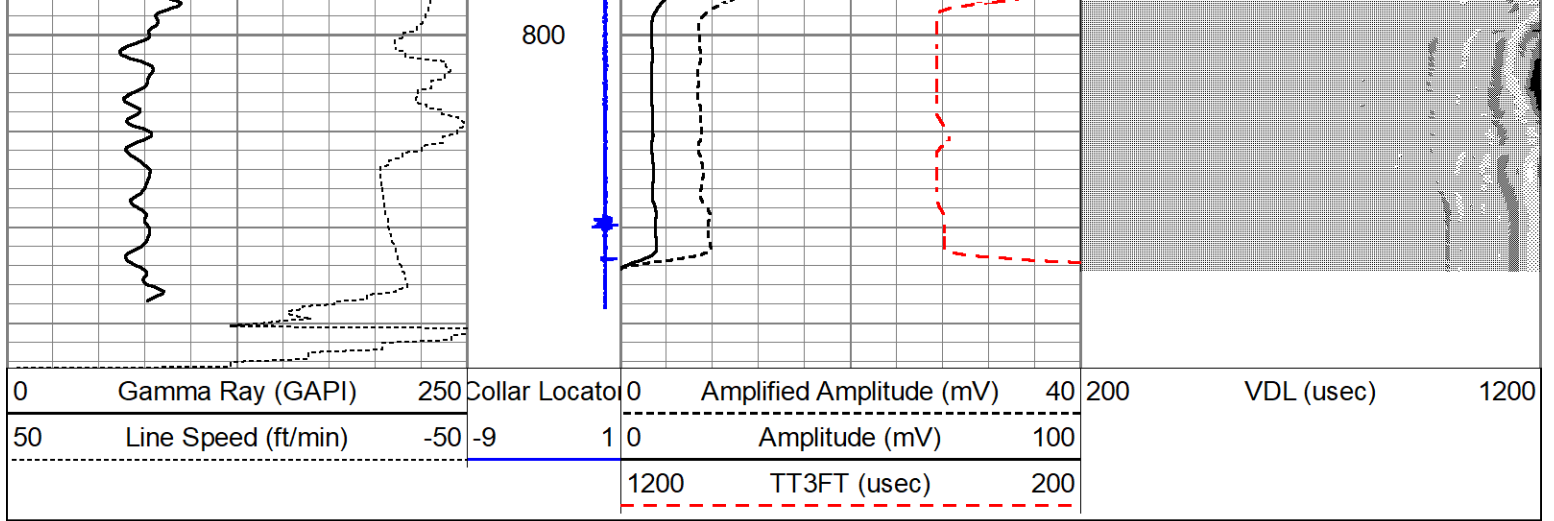


REPEAT PASS

Database File chevron_shable_14-22_cbl.db
 Dataset Pathname rig3(523)/well/run1/pass4
 Presentation Format cbl_dr
 Dataset Creation Wed Aug 09 08:11:18 2023
 Charted by Depth in Feet scaled 1:240

0	Gamma Ray (GAPI)	250	Collar Location	0	Amplified Amplitude (mV)	40	200	VDL (usec)	1200
50	Line Speed (ft/min)	-50	-9 1	0	Amplitude (mV)	100			
					1200	TT3FT (usec)	200		





Calibration Report

Database File chevron_shable_14-22_cbl.db
 Dataset Pathname rig3(523)/well/run1/pass6
 Dataset Creation Wed Aug 09 08:19:15 2023

Gamma Ray Calibration Report

Type / Serial: Probe275dig / pr051003

SHOP CALIBRATION

Thu Oct 27 14:35:18 2005

	Counts/Sec.	Gain	Offset	Jig	Units
Background	41.0				cps
Calibrator	340.3				cps
		0.8720			GAPI/cps

PRIMARY VERIFICATION

00:00:00

Background	33.2				cps
Calibrator	288.5				cps
Difference				255.3	GAPI

BEFORE SURVEY VERIFICATION

00:00:00

Background	34.4				cps
Calibrator	292.8				cps
Difference				258.4	GAPI

AFTER SURVEY VERIFICATION

00:00:00

Background	33.6				cps
Calibrator	289.8				cps
Difference				256.2	GAPI

Segmented Cement Bond Log Calibration Report

Serial Number: 275
 Tool Model: Probe
 Calibration Casing Diameter: 4.500 in
 Calibration Depth: 452.217 ft

Master Calibration, performed Wed Aug 9 08:07:20 2023:

Raw (v)		Calibrated (mv)		Results	
Zero	Cal	Zero	Cal	Gain	Offset
0.007	0.882	0.000	81.106	02.818	0.672

S	0.007	0.882	0.000	81.196	92.818	-0.672
CAL						
5'	0.053	0.584	0.000	81.196	152.763	-8.061
SUM						
S1						
S2						
S3						
S4						
S5						
S6						
S7						
S8						

Internal Reference Calibration, performed (Not Performed):

	Raw (v)		Calibrated (v)		Results	
	Zero	Cal	Zero	Cal	Gain	Offset
CAL						

Air Zero Calibration, performed Thu May 28 09:57:00 2020:

	Raw (v)		Calibrated (v)		Results
	Zero		Zero		Offset
3'	0.000		0.000		0.000
5'	0.000		0.000		0.000
SUM					
S1					
S2					
S3					
S4					
S5					
S6					
S7					
S8					

Log Variables

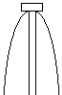
DatabaseC:\ProgramData\Warrior\Data\chevron_shable_14-22_cbl.db
Dataset rig3(523)/well/run1/pass6/_vars_

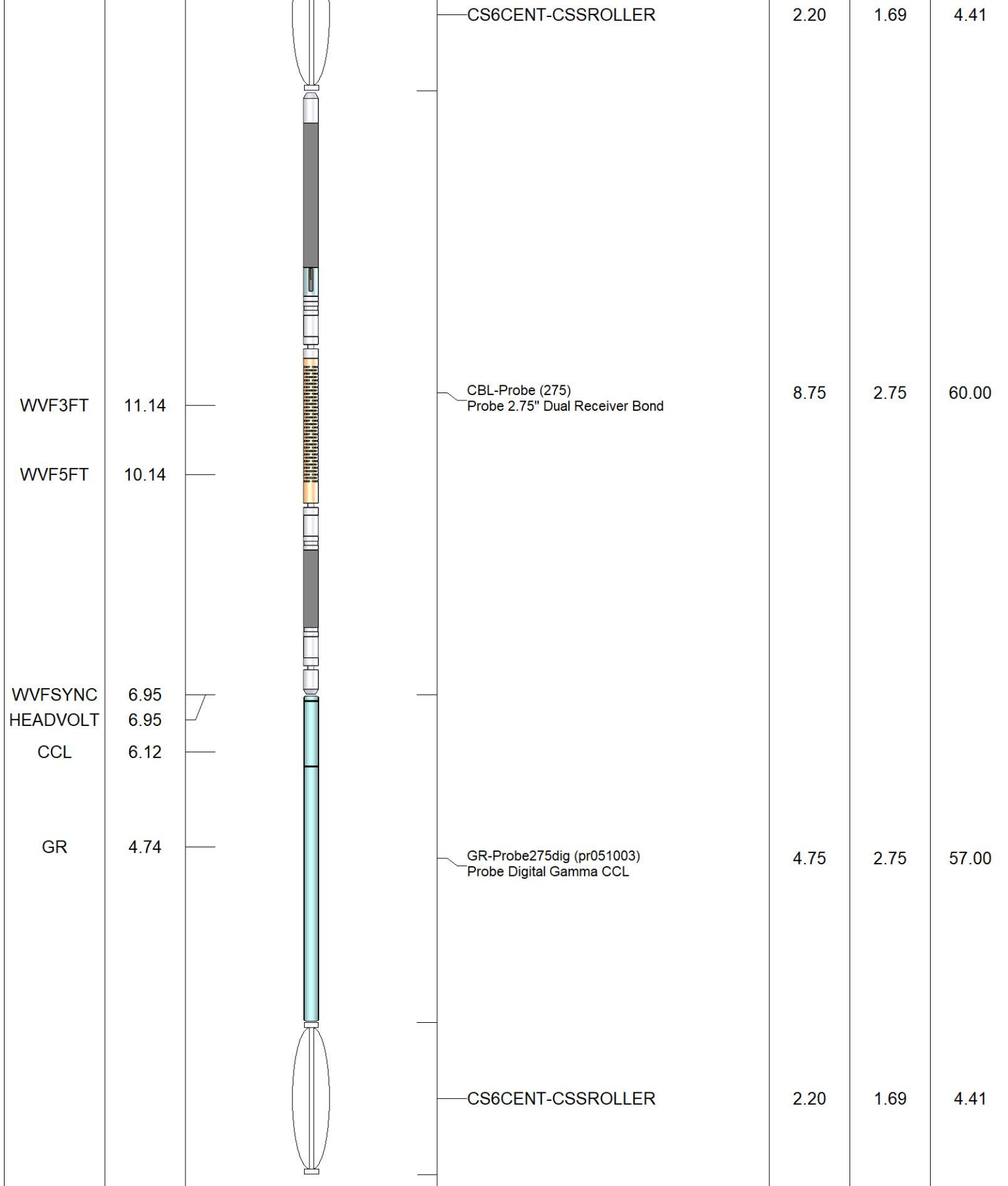
Top - Bottom

BOREID in 7.875	BOTTEMP degF 100	CASEOD in 4.5	CASETHCK in 0	CASEWGHT lb/ft 11.6	MAXAMPL mV 0	MINAMPL mV 1	MINATTN db/ft 0.8
PERFS No	PPT usec 0	SRFTEMP degF 0	TDEPTH ft 0				

Variable Description

BOREID : Borehole I.D.	CASEWGHT : Casing Weight	PERFS : Perforation Flag
BOTTEMP : Bottom Hole Temperature	MAXAMPL : Maximum Amplitude	PPT : Predicted Pipe Time
CASEOD : Casing O.D.	MINAMPL : Minimum Amplitude	SRFTEMP : Surface Temperature
CASETHCK : Casing Thickness	MINATTN : Minimum Attenuation	TDEPTH : Total Depth

Sensor	Offset (ft)	Schematic	Description	Length (ft)	O.D. (in)	Weight (lb)
						



Dataset: chevron_shable_14-22_cbl.db: rig3(523)/well/run1/pass6
 Total length: 17.90 ft
 Total weight: 125.82 lb
 O.D.: 2.75 in