

Final Reclamation and Stormwater Inspection

Date: 11/02/2023

Operator: NOBLE ENERGY INC - 100322

Location ID: 431669

Inspection Document #: 708200675

Weld County, CO

Dylan Edwardson
Reclamation Specialist, ECMC



COLORADO

**Energy & Carbon Management
Commission**

Department of Natural Resources

Inspection Photos
Location Name: Lone Pine LB 19-78HN
Location ID: 431669



Photo 1. Taken near the northwest corner of the former well location. Photo illustrates debris on location.

Inspection Photos
Location Name: Lone Pine LB 19-78HN
Location ID: 431669



Photo 2. Taken near the northwest corner of the well location. Photo illustrates non-uniform vegetative cover resulting in bare soils and the presence of undesirable weedy vegetation (e.g. kochia and russian thistle).

Inspection Photos
Location Name: Lone Pine LB 19-78HN
Location ID: 431669



Photo 3. Taken from the southern portion of the well location. Photo illustrates gravel/road base material on location.

Inspection Photos
Location Name: Lone Pine LB 19-78HN
Location ID: 431669



Photo 4. Taken near the southwest corner of the well location. Photo illustrates non-uniform vegetative cover resulting in bare soils and the presence of undesirable weedy vegetation (e.g. kochia and russian thistle).

Inspection Photos
Location Name: Lone Pine LB 19-78HN
Location ID: 431669



Photo 5. Taken near the northern portion of former tank battery location. Photo illustrates non-uniform vegetative cover resulting in bare soils and the presence of undesirable weedy vegetation (e.g. kochia and russian thistle).

Inspection Photos
Location Name: Lone Pine LB 19-78HN
Location ID: 431669



Photo 6. Taken near the southeast corner of the well location (former topsoil stockpile area). Photo illustrates non-uniform vegetative cover resulting in bare soils and the presence of undesirable weedy vegetation (e.g. kochia and russian thistle).

Inspection Photos
Location Name: Lone Pine LB 19-78HN
Location ID: 431669

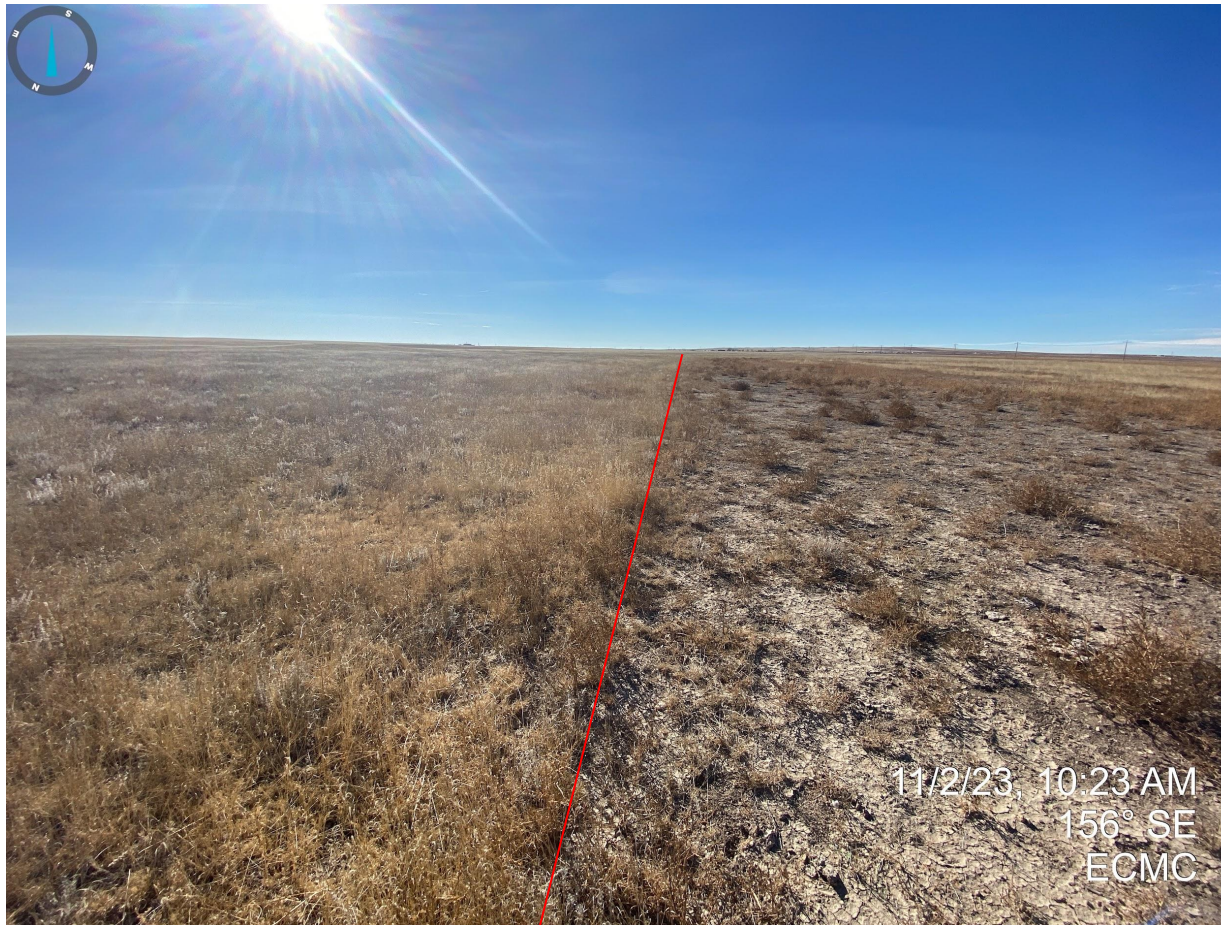


Photo 7. Taken near the northeastern corner of the well location. Photo illustrates non-uniform vegetative cover resulting in bare soils and the presence of undesirable weedy vegetation (e.g. kochia and russian thistle). The red line delineates the reference area from the former/reclaimed location.

Inspection Photos
Location Name: Lone Pine LB 19-78HN
Location ID: 431669



Photo 8. Photo of adjacent reference area taken east of the location. Buffalo grass, blue grama, etc observed.