

WGS84
±15ft

40.04199, -104.85842

ft
±12ft

4970

°T
±12

W259



06Nov23 08:37 ECMC Environmental Inspection
© 06-Nov-23 08:37:11 AM

WGS84
±16ft

40.04200, -104.85842

ft
±11ft

4964

°T
±12

NW321



06Nov23 08:37 ECMC Environmental Inspection
© 06-Nov-23 08:37:15 AM

WGS84
±16ft

40.04200, -104.85842

ft
±11ft

4964

°T
±12

N0



06 Nov 23 08:37 ECMC Environmental Inspection
© 06 Nov 23 08:37:18 AM



WGS84
±16ft

40.04200, -104.85842

ft
±11ft

4964

°T
±12

NE22



06 Nov 23 08:37: EGMC Environmental Inspection
© 06-Nov-23 08:37:21 AM

WGS84
±16ft

40.04200, -104.85842

ft
±11ft

4961

°T
±12

NE60



06Nov23 08:37 ECMC Environmental Inspection
© 06-Nov-23 08:37:27 AM

WGS84
±16ft

40.04200, -104.85842

ft
±11ft

4962

°T
±12

E97



06Nov23 08:37 ECMC Environmental Inspection
© 06-Nov-23 08:37:30 AM

WGS84
±16ft

40.04200, -104.85842

ft
±11ft

4962

°T
±12

SE129



06Nov23 08:37 ECMC Environmental Inspection
© 06-Nov-23 08:37:32 AM

WGS84
±16ft

40.04200, -104.85842

ft
±11ft

4962

°T
±12

SE156



06Nov23 08:37 ECMC Environmental Inspection
© 06-Nov-23 08:37:34 AM

WGS84
±16ft

40.04200, -104.85842

ft
±11ft

4962

°T
±12

S183



06Nov23 08:37 ECMC Environmental Inspection
© 06-Nov-23 08:37:37 AM

WGS84
±16ft

40.04201, -104.85837

ft
±11ft

4960

°T
±12

NW333



06Nov23 08:37 ECMC Environmental Inspection
© 06-Nov-23 08:37:51 AM

WGS84
±16ft

40.04200, -104.85839

ft
±11ft

4960

°T
±12

NE15



06 Nov 23 08:37 ECMG Environmental Inspection
© 06 Nov 23 08:37:57 AM

WGS84
±16ft

40.04200, -104.85838

ft
±11ft

4960

°T
±12

E84



06 Nov 23 08:38 ECMC Environmental Inspection
© 06 Nov 23 08:38:02 AM

WGS84
±16ft

40.04200, -104.85838

ft

4958

°T
±12

SE128



06Nov23 08:38 ECMC Environmental Inspection
© 06-Nov-23 08:38:07 AM

WGS84
±16ft

40.04201, -104.85834

A_{±10} 4962

±12

E87



06 Nov 23 08:38 AM - Term limit in former stockpile footprint. ECMC Environmental Inspection
© 06 Nov 23 08:38:23 AM





WGS84
±16ft

40.04202, -104.85833

±11ft

4962

±12ft

NE73

06Nov23 08:38 BCM Environmental Inspection
© 06 Nov 23 08:38:34 AM

WGS84
±16ft

40.04203, -104.85827

A ±11ft

4963

°T
±12

NE66



06Nov23 08:38 ECMC Environmental Inspection
© 06-Nov-23 08:38:45 AM

WGS84
±16ft

40.04202, -104.85824

±11ft

4963

±12

N14



06 Nov 23 08:59 Culvert in former stockpile area ECMC Environmental Inspection
© 06 Nov 23 08:59:04 AM

WGS84
±16ft

40.04200, -104.85826

±11ft

4963

±12ft

SE125



06 Nov 23 08:39 - Culvert outfall to drainage - ECMC Environmental Inspection
e 06 Nov 23 08:39:17 AM

WGS84 $\pm 16\text{ft}$ 40.04200, -104.85826 \wedge^{ft} $\pm 11\text{ft}$ 4963 $\triangle^{\circ, \text{T}}$ ± 12 SE127



06Nov23 08:39 - Conduit outfall ECMC Environmental Inspection
© 06-Nov-23 08:39:26 AM



06Nov23 08:52 Culvert inlet ECMC Environmental Inspection
e 06-Nov-23 08:52:44 AM





06Nov23 08:53 Culvert outfall ECMC Environmental Inspection
© 06-Nov-23 08:53:06 AM

40.04193, -104.85797

Δ $\frac{\text{ft}}{\pm 11\text{ft}}$

4965

$\frac{\circ}{\pm 12}$

SE156



06Nov23 08:54 Drainage to irrigation ditch -ECMC Environmental Inspection
© 06-Nov-23 08:54:06 AM



WGS84
±16ft

40.04193, -104.85797

ft
±11ft

4962

°T
±12

W281



06Nov23 08:54 Topographic low south of excavation and former stockpile ECMC Environmental Inspection
© 06-Nov-23 08:54:11 AM

WGS84
±16ft

40.04193, -104.85797

ft
±11ft

4962

°T
±12

NW302



06Nov23 08:54 ECMC Environmental Inspection
© 06-Nov-23 08:54:14 AM

WGS84
±16ft

40.04208, -104.85794

ft
±11ft

4963

°T
±12

S175



06Nov23 08:55 - ECMC Environmental Inspection
© 06-Nov-23 08:55:31 AM





WGS84
±16ft

40.04206, -104.85804

ft
±11ft

4963

±12

NE47



06Nov23 08:56 ECMC Environmental Inspection
© 66-Nov-23 08:56:12 AM

WGS84
±16ft

40.04206, -104.85803

ft
±11ft

4964

°T
±12

NE36



06 Nov 23 08:56 ECMC Environmental Inspection
© 06 Nov 23 08:56:18 AM

WGS84
±16ft

40.04206, -104.85803

ft
±11ft

4964

°T
±12

N1



06Nov23 08:56 - ECMC Environmental Inspection
06-Nov-23 08:56:21 AM

WGS84
±16ft

40.04206, -104.85803

ft
±11ft

4964

°T
±12

NW319



06Nov23 08:56 ECMG Environmental Inspection
© 06 Nov 23 08:56:25 AM

WGS84
±16ft

40.04209, -104.85804

ft
±11ft

4965

°T
±12

NE36



06Nov23 08:56 ECMC Environmental Inspection
© 06-Nov-23 08:56:42 AM



WGS84
±16ft

40.04210, -104.85804

ft
±11ft

4964

°T
±12

N11



06 Nov 23 08:56 ECMC Environmental Inspection
© 06-Nov-23 08:56:48 AM

WGS84
±16ft

40.04210, -104.85804

ft
±11ft

4962

°T
±12

NW344



06Nov23 08:56 - Uncapped/improperly capped flowlines in excavation, inadequate fencing ECMG Environmental Inspection
© 06-Nov-23 08:56:53 AM

WGS84
±16ft

40.04209, -104.85803

ft
±11ft

4962

°T
±12

NW307



06Nov23 08:56 Stormwater run-in and erosion into excavation ECMC Environmental Inspection
© 06-Nov-23 08:56:56 AM

WGS84
±16ft

40.04210, -104.85804

ft
±11ft

4962

°T
±12

NW289



06 Nov 23 08:57 Unstable sidewalls, gulley and rill formation ECMC Environmental Inspection
06 Nov 23 08:57:00 AM

WGS84
±16ft

40.04202, -104.85801

ft
±11ft

4967

°T
±12

NW320



06Nov23 08:57 ECMC Environmental Inspection
© 06-Nov-23 08:57:47 AM

WGS84
±16ft

40.04203, -104.85801

ft
±11ft

4967

°T
±12

SW252



06Nov23 08:57 Former stockpile and access footprint - ECMC Environmental Inspection
© 06-Nov-23 08:57:50 AM

WGS84
±15ft

40.04208, -104.85829

ft
±12ft

4963

°T
±12

SW249



06Nov23 09:05 Former stockpile location ECMC Environmental Inspection
© 06-Nov-23 09:05:10 AM

WGS84
±15ft

40.04209, -104.85828

ft
±12ft

4965

°T
±12

NW307



06Nov23 09:05 Former stockpile location ECMC Environmental Inspection
© 06-Nov-23 09:05:13 AM

WGS84
±15ft

40.04208, -104.85825

ft
±12ft

4966

°T
±12

N358



06 Nov 23 09:05 Former stockpile location (NE) ECMC Environmental Inspection
© 06 Nov 23 09:05:16 AM

WGS84
±16ft

40.04206, -104.85824

ft
±11ft

4967

°T
±12

N350



06Nov23 09:05 Former stockpile location ECMC Environmental Inspection
© 06-Nov-23 09:05:35 AM

WGS84
±16ft

40.04207, -104.85823

ft
±11ft

4966

°T
±12

NE34



06Nov23 09:05 - Former stockpile location - ECMC Environmental Inspection
© 06-Nov-23 09:05:43 AM

WGS84
±16ft

40.04206, -104.85824

ft
±11ft

4966

°T
±12

S176



06Nov23 09:05 Former stockpile location ECMC Environmental Inspection
© 06-Nov-23 09:05:45 AM

WGS84
±16ft

40.04208, -104.85816

ft
±11ft

4967

°T
±12

NW326



06Nov23 09:06 ECMC Environmental Inspection
© 06-Nov-23 09:06:00 AM

WGS84
±16ft

40.04215, -104.85816

ft
±11ft

4967

°T
±12

E78



06Nov23 09:06 Inadequate fencing, erosion into excavation ECMC Environmental Inspection
© 06-Nov-23 09:06:16 AM





WGS84 40.04214, -104.85815

4968

NE54

06 Nov 23 09:06 EOMC Environmental Inspection
© 06 Nov 23 09:06:21 AM



WGS84
±16ft

40.04216, -104.85814

ft
±11ft

4969

°T
±12

S171



06Nov23 09:06 Fiberglass flowline exposed ECMC Environmental Inspection
© 06-Nov-23 09:06:31 AM

WGS84
±16ft

40.04219, -104.85814

ft
±11ft

4969

°T
±12

NE49



06Nov23 09:06 Improperly/uncapped flowlines ECMC Environmental Inspection
© 06-Nov-23 09:06:47 AM

WGS84
±16ft

40.04219, -104.85814

ft
±11ft

4968

°T
±12

NE17



06Nov23 09:06 Inadequate fencing and animal tracks within excavation ECMC Environmental Inspection
© 06-Nov-23 09:06:51 AM

WGS84 $\pm 15\text{ft}$ 40.04212, -104.85816 Δ $\pm 12\text{ft}$ 4975 \triangleleft ± 12 °, T NE31



06Nov23 09:07 ECMC Environmental Inspection
© 06-Nov-23 09:07:30 AM

WGS84 40.04205, -104.85815 Δ ^{ft} ±10ft 4972 ∇ ^{ft} ±12 NE32



06 Nov 23 09:08 Soil boring cuttings ECMC Environmental Inspection
06-Nov-23 09:08:08 AM

WGS84 40.04211, -104.85828 Δ 4953 SW250
±12ft ±12ft ±12ft



06Nov23 09:08 Torn liner ECMC Environmental Inspection
© 06-Nov-23 09:08:52 AM

WGS84
±12ft

40.04236, -104.85789

ft
±10ft

4959

°T
±12

W279



06Nov23 09:19 Inadequate fencing - EMC Environmental Inspection
© 06-Nov-23 09:19:30 AM



WGS84
±12ft

40.04237, -104.85791

±10ft

4958

±12ft

W275



06Nov23 09:19 Exposed utilities ECMC Environmental Inspection
© 06-Nov-23 09:19:32 AM

WGS84
±12ft

40.04235, -104.85792

ft
±10ft

4963

°T
±12

SW201



06Nov23 09:19 Water in excavation ECMC Environmental Inspection
© 06-Nov-23 09:19:36 AM

WGS84
±15ft

40.04235, -104.85793

ft
±12ft

4965

°T
±12

SW227



06Nov23 09:19 - Flowlines exposed, uncapped/improperly capped flowlines. ECMC Environmental Inspection
© 06-Nov-23 09:19:42 AM



CS84 40.04230, -104.85789

ft ±11ft 4974

°T ±12

N7



06Nov23 09:20 Monitoring well and access road ECMC Environmental Inspection
© 06 Nov 23 09:20:02 AM

WGS84
±16ft

40.04227, -104.85792

ft
±11ft

4972

°T
±12

SW209



06Nov23 09:20 ECMC Environmental Inspection
© 06-Nov-23 09:20:15 AM

WGS84
±16ft

40.04228, -104.85792

ft
±11ft

4970

°T
±12

SW246



06Nov23 09:20 ECMC Environmental Inspection
© 06-Nov-23 09:20:23 AM

WGS84
±16ft

40.04228, -104.85792

ft
±11ft

4973

°T
±12

NW311



06Nov23 09:20 ECMC Environmental Inspection
© 06-Nov-23 09:20:34 AM

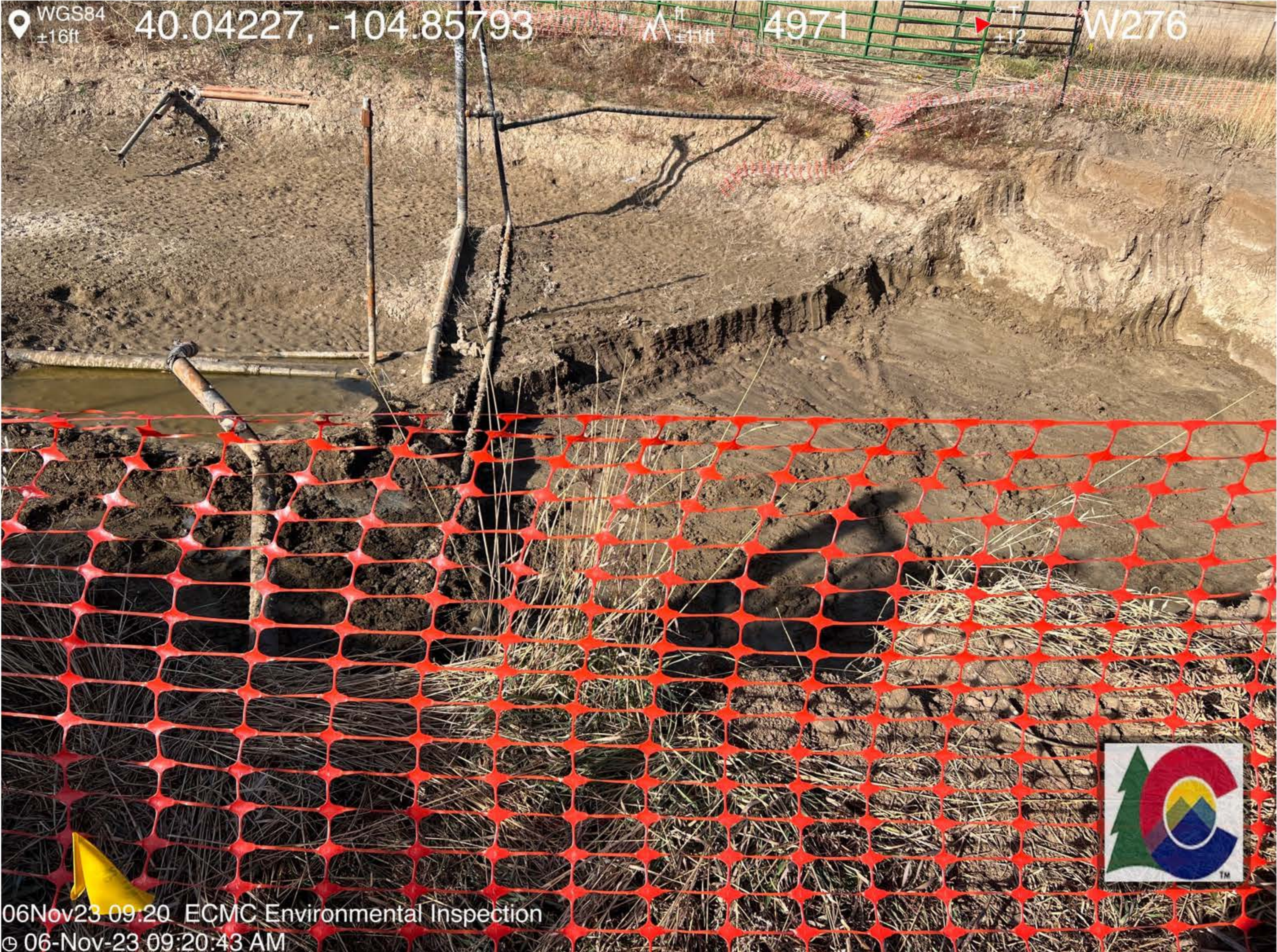


WGS84
±16ft

40.04227, -104.85793

4971

N276



06Nov23 09:20 ECMC Environmental Inspection
© 06-Nov-23 09:20:43 AM

WGS84 ±16ft 40.04227, -104.85792 4968 SW250



06Nov23 09:20 ECMC Environmental Inspection
© 06-Nov-23 09:20:48 AM



WGS84
±16ft

40.04227, -104.85792

ft
±11ft

4969

°T
±12

SW212



06Nov23 09:20 ECMC Environmental Inspection
© 06-Nov-23 09:20:58 AM



06Nov23 09:21 ECAC Environmental Inspection
© 06-Nov-23 09:21 12 AM



WGS84
±16ft

40.04219, -104.85791

ft
±11ft

4976

°T
±12

NW314



06Nov23 09:21 Trash/debris -ECMC Environmental Inspection
© 06-Nov-23 09:21:26 AM

WGS84
±16ft

40.04207, -104.85792

ft
±11ft

4973

°T
±12

SW242



06Nov23 09:21 Weeds ECMC Environmental Inspection
© 06-Nov-23 09:21:51 AM

WGS84
±16ft

40.04209, -104.85791

ft
±11ft

4971

°T
±12

NW302



06Nov23 09:21 ECMC Environmental Inspection
© 06-Nov-23 09:21:55 AM



WGS84
±16ft

40.04208, -104.85792

ft
±11ft

4972

°T
±12

W267



06Nov23 09:22 ECMC Environmental Inspection
© 06-Nov-23 09:22:00 AM





WGS84
±16ft

40.04214, -104.85792

4975

12

NW291



06Nov23 09:22 Fiberglass line outside excavation. ECMC Environmental Inspection
© 06-Nov-23 09:22:26 AM

WGS84 40.04210, -104.85823 N 4963 SW213
±15ft ±12ft



06Nov23 10:02 ECMC Environmental Inspection
© 06-Nov-23 10:02:32 AM

WGS84
±15ft

40.04211, -104.85823

ft
±12ft

4965

°T
±12

W273



06Nov23 10:02 Former stockpile footprint ECMC Environmental Inspection
© 06-Nov-23 10:02:38 AM

WGS84
±16ft

40.04213, -104.85823

ft
±11ft

4963

°T
±12

NW337



06Nov23 10:02 ECMC Environmental Inspection
© 06-Nov-23 10:02:44 AM

WGS84 $\pm 13\text{ft}$ 40.04216, -104.85813 \wedge ft $\pm 10\text{ft}$ 4960 \triangleleft ° , T ± 12 E90



06Nov23 10:06 Debris - flexible pipe courting in excavation. ECMC Environmental Inspection

06-Nov-23 10:06:04 AM

WGS84 $\pm 12\text{ft}$ 40.04218, -104.85814 \wedge $\pm 10\text{ft}$ 4969 \triangle ± 12 °, T NE34



06 Nov 23 10:06 Animal tracks within excavation. ECMC Environmental Inspection
© 06 Nov 23 10:06:11 AM

WGS84 $\pm 15\text{ft}$ 40.04224, -104.85814 \wedge^{ft} $\pm 11\text{ft}$ 4963 $\triangle^{\circ, \text{T}}$ ± 12 E92



06Nov23 10:40 ECMC Environmental Inspection
© 06-Nov-23 10:40:06 AM

WGS84 $\pm 15\text{ft}$ 40.04224, -104.85814 Δ $\pm 12\text{ft}$ 4967 ft ± 12 $^{\circ}, T$ SE132



06Nov23 10:40 Flowlines exposed in the excavation - uncapped ECMC Environmental Inspection

© 06-Nov-23 10:40:15 AM

WGS84 $\pm 16\text{ft}$ 40.04234, -104.85807 \wedge $\pm 11\text{ft}$ 4964 \triangle ± 12 SE115



06Nov23 10:55 Area of excavation recently overexcavated ECMC Environmental Inspection
© 06-Nov-23 10:55:11 AM

WGS84 $\pm 16\text{ft}$ 40.04232, -104.85809 \wedge $\pm 11\text{ft}$ 4966 \triangle ± 12 °, T SE150



06Nov23/10:55 ECMC Environmental Inspection
© 06-Nov-23/10:55:14 AM



40.04226, 104.85813

±10ft

4987

±12

E76

06Nov23 10:57: ECMC Environmental Inspection
© 06 Nov-23 10:57:38 AM



WGS84
±15ft

40.04225, -104.85813

ft
±12ft

4985

°T
±12

NE68



06Nov23 10:57 BH-07 sample location PID of 138 ppm ECMC Environmental Inspection
© 06-Nov-23 10:57:43 AM