



06Nov23 13:12 Weeds collecting in gulley from stormwater run-in to open excavation ECMC Environmental Inspection
© 06-Nov-23 01:12:51 PM



06Nov23 13:13 Weeds collecting in gulley from stormwater run-in to open excavation ECMC Environmental Inspection
© 06-Nov-23 01:13:22 PM

WGS84 40.11167, -104.89180 Δ $\pm 16\text{ft}$ $\pm 11\text{ft}$ 5038 \triangle ± 13 °,T NW315



06Nov23 13:13 Stormwater erosion gully, unstable excavation sidewalls ECMC Environmental Inspection

06-Nov-23 01:13:34 PM

WGS84 40.11172, -104.89178 Δ ± 11 ft 5038 \angle ± 13 °, T NW335
 ± 16 ft



06Nov23 13:13 ECMC Environmental Inspection
© 06-Nov-23 01:13:40 PM



WGS84
±16ft

40.11172, -104.89177

Alt
±11ft

5039

°T
±14

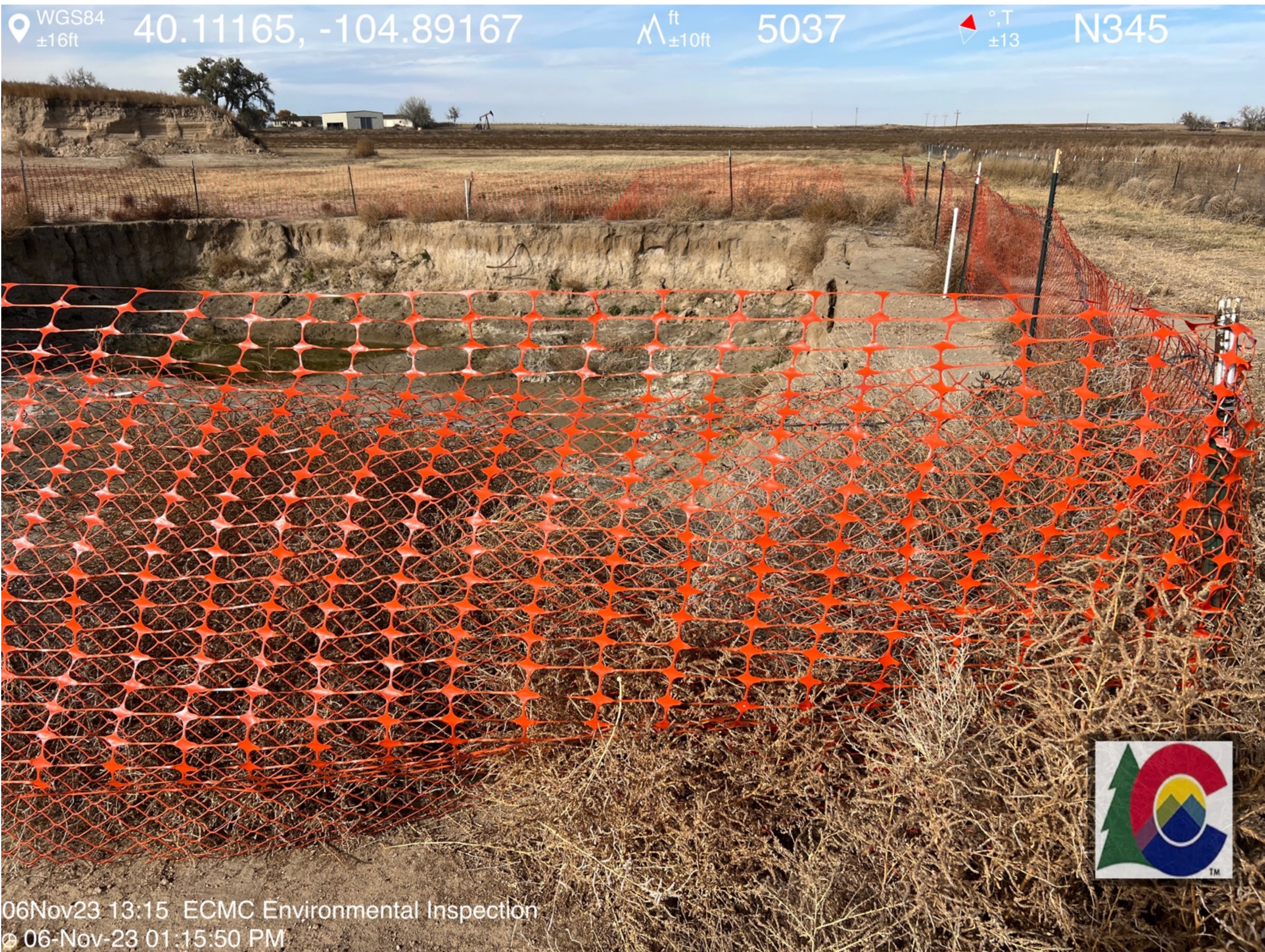
NW336



06Nov23 13:15 ECMC Environmental Inspection
© 06-Nov-23 01:15:05 PM





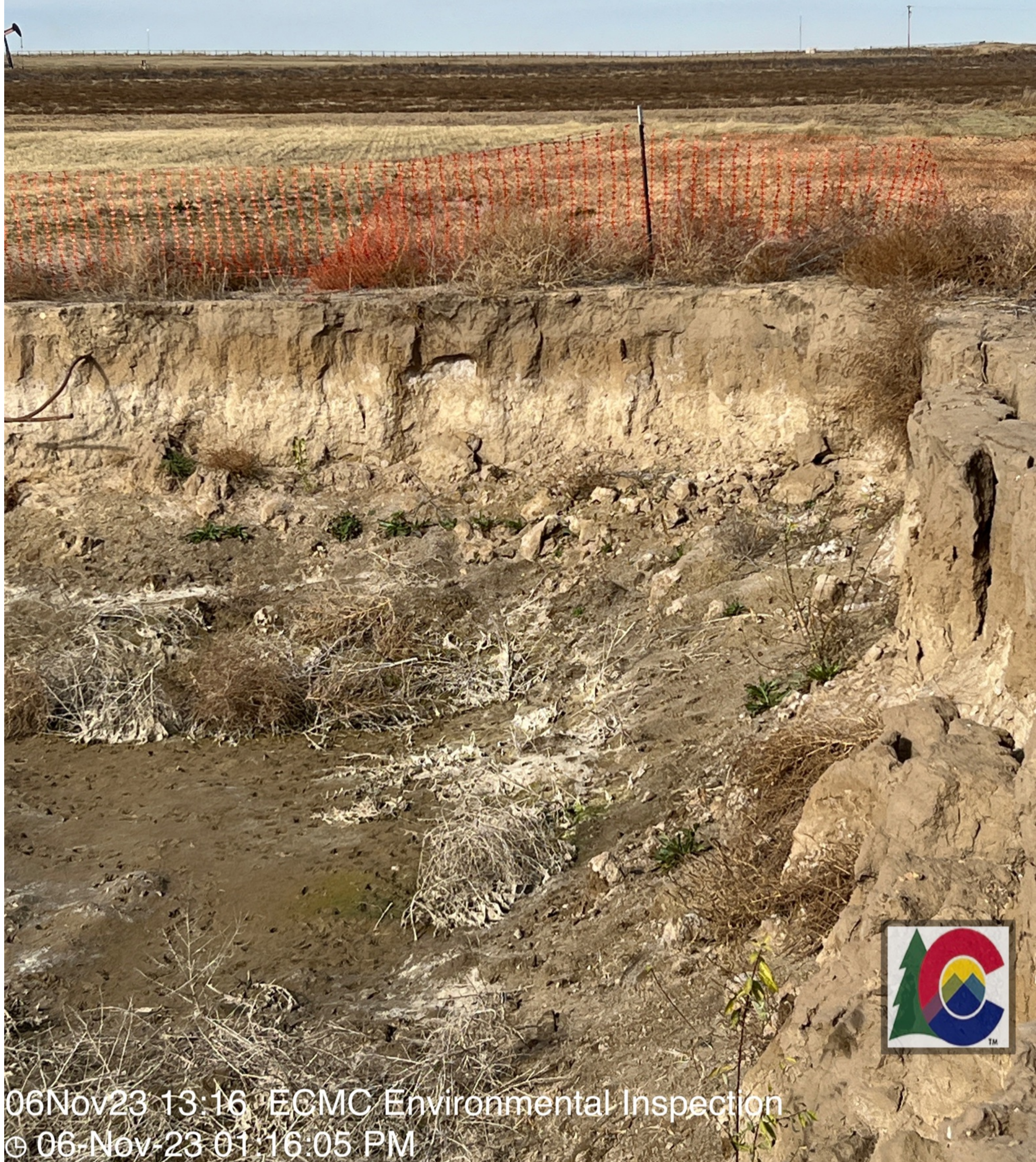


WGS84 40.11167, -104.89167 Δ ± 11 ft 5039 ± 13 N356



06Nov23 13:15 Unstable sidewalls continue to collapse ECMC Environmental Inspection
© 06-Nov-23 01:15:59 PM

WGS84 40.11166, -104.89167 Δ ± 11 ft 5040 \triangle ± 13 °,T N349
 ± 16 ft



06Nov23 13:16 ECMC Environmental Inspection
© 06-Nov-23 01:16:05 PM

WGS84 40.11167, -104.89167 Δ ^{ft}_{±11ft} 5041 \triangle ^{°T}_{±13} NW325
±16ft



06Nov23 13:16 Stormwater run-in, erosion, unstable sidewalls ECMC Environmental Inspection

© 06-Nov-23 01:16:11 PM

WGS84 40.11172, -104.89160 Δ ^{ft}_{±11ft} 5040 \angle [°]_{±13} NW330



06Nov23 13:16 Inadequate fencing, weeds ECMC Environmental Inspection
© 06-Nov-23 01:16:35 PM







06Nov23 13:16 ECMC Environmental Inspection
© 06-Nov-23 01:16:53 PM











-104.89162

ft
±11ft

5037

°T
±13

SW240



06Nov23 13:17 Stormwater run-in to open excavation, erosion resulting in the formation of rills and gulleys ECMC Environmental Inspection
© 06-Nov-23 01:17:45 PM

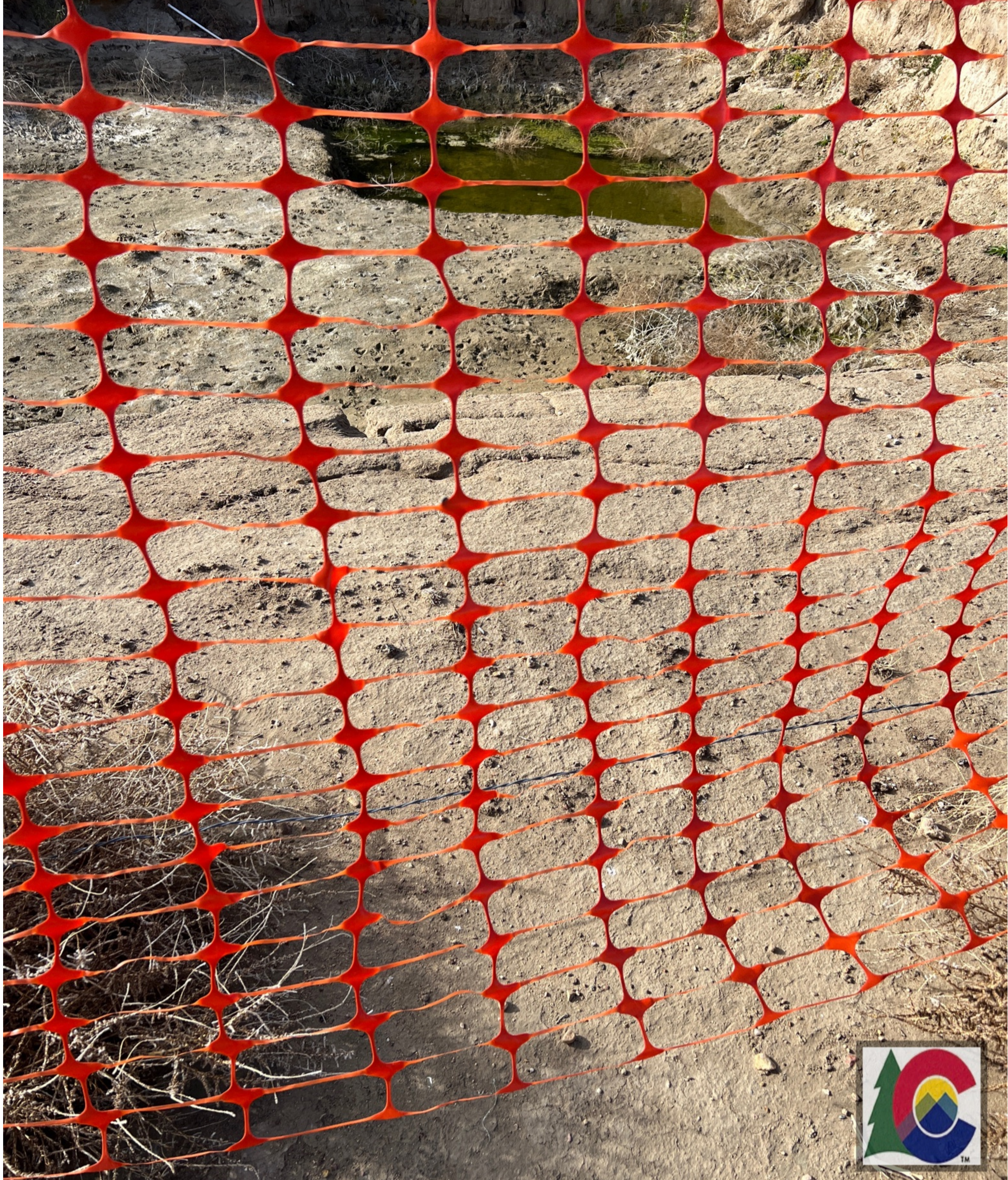


WGS84 40.11174, -104.89165 Δ ^{ft}_{±11ft} 5038 Δ ^{°T}_{±13} N356



06Nov23 13:18 Sidewall showing signs of further collapse ECMC Environmental Inspection
© 06-Nov-23 01:18:12 PM

WGS84 40.11176, -104.89163 Δ ± 11 ft 5039 Δ ± 13 W284



06Nov23 13:19 Gap between fencing and ground ECMC Environmental Inspection
© 06-Nov-23 01:19:00 PM





06Nov23 13:19 Gap in excavation fencing, weeds - ECMC Environmental Inspection
© 06-Nov-23 01:19:43 PM





06Nov23 13:20 Animal tracks in excavation ECMC Environmental Inspection
© 06-Nov-23 01:20:05 PM





06Nov23 13:20 Sidewall collapsing ECMC Environmental Inspection
© 06-Nov-23 01:20:35 PM



06Nov23 13:20 Sidewall collapse, visible impacts, weeds. ECMC Environmental Inspection
© 06-Nov-23 01:20:38 PM





06Nov23 13:20 ECMC Environmental Inspection
© 06-Nov-23 01:20:45 PM



WGS84 40.11187, -104.89183 Δ $\frac{\text{ft}}{\pm 11\text{ft}}$ 5039 $\frac{\circ}{\pm 13}$ SE162

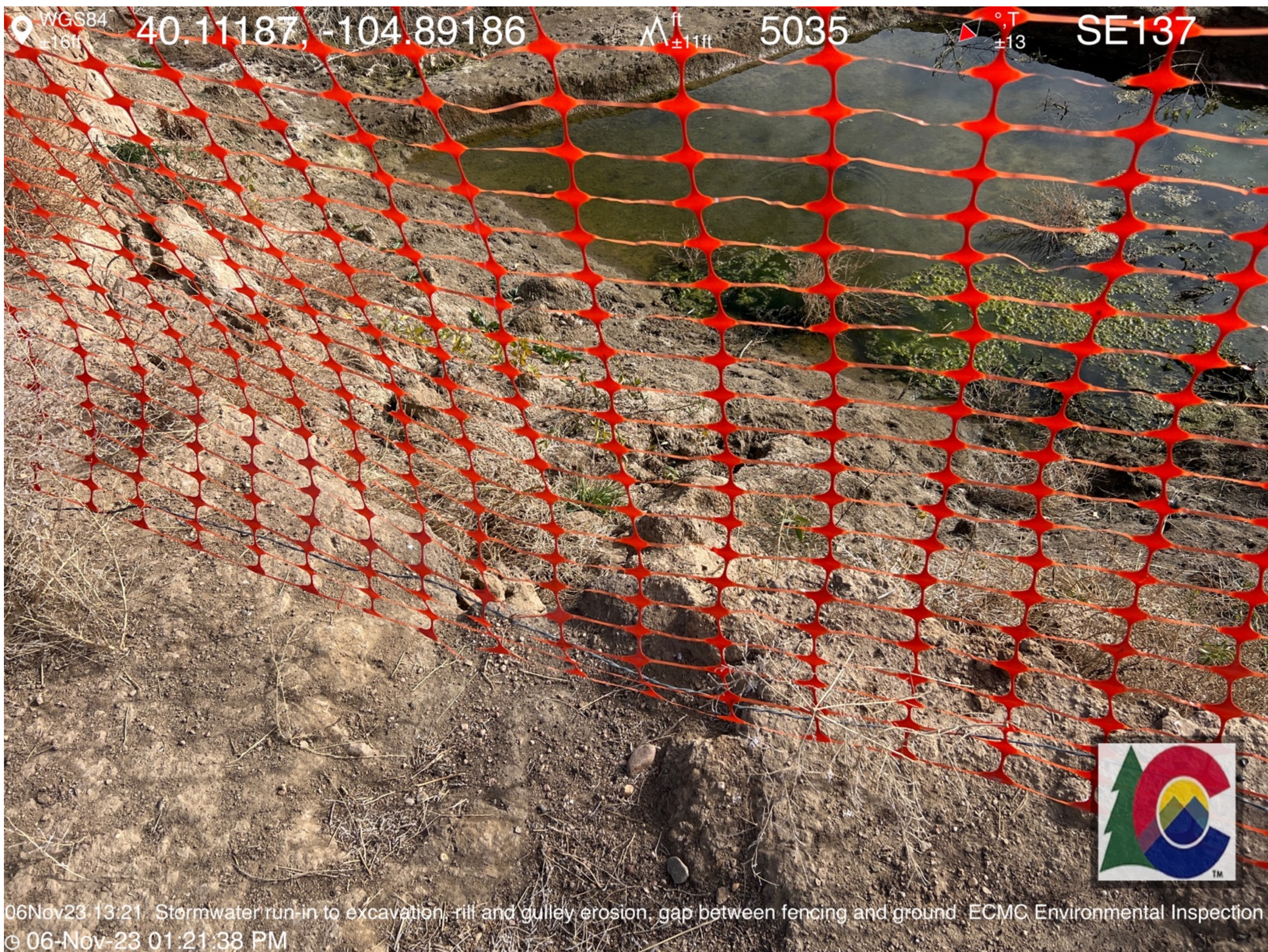


06Nov23 13:21 Inadequate fencing ECMC Environmental Inspection
© 06-Nov-23 01:21:20 PM

WGS84 40.11186, -104.89185 Δ ± 11 ft 5040 \triangle ± 13 SE107



06Nov23 13:21 Inadequate fencing ECMC Environmental Inspection
© 06-Nov-23 01:21:29 PM



06Nov23 13:21 Stormwater run-in to excavation, rill and gulley erosion, gap between fencing and ground ECMC Environmental Inspection
© 06-Nov-23 01:21:38 PM

WGS84 40.11188, -104.89185 Δ ± 11 ft 5037 \triangle ± 13 °,T S187



06Nov23 13:21 ECMC Environmental Inspection
© 06-Nov-23 01:21:56 PM

WGS84 40.11186, -104.89186 Δ ^{ft}_{±11ft} 5037 ∇ ^{°T}_{±13} S188
±16ft



06Nov23 13:22 ECMC Environmental Inspection
⊕ 06-Nov-23 01:22:12 PM



WGS84 40.11183, -104.89188 Δ ft ± 10 ft 5038 Δ ± 13 SE112

06Nov23 13:22 Water in excavation, weeds, unstable sidewalls, inadequate fencing, ECMC Environmental Inspection

© 06-Nov-23 01:22:45 PM



WGS84 40.11183, -104.89188 Δ ft 5038 \angle °, T SE133
±16ft ±10ft ±13



06Nov23 13:22 EGMC Environmental Inspection
© 06-Nov-23 01:22:51 PM

WGS84 40.11178, -104.89187 Δ ft 5039 ∇ °T NE66
±16ft ±11ft ±13



06Nov23 13:23 Unstable sidewall, water in excavation, inadequate fencing ECMC Environmental Inspection
© 06-Nov-23 01:23 10 PM



06Nov23 13:23 Unstable sidewalls ECMC Environmental Inspection
© 06-Nov-23 01:23:33 PM



WGS84 40.11177, -104.89187 Δ ± 11 ft 5038 \triangle ± 12 °,T NE19
 ± 16 ft



06Nov23 13:24 Unstable vertical sidewalls, gap between base of fencing and ground. ECMC Environmental Inspection

© 06-Nov-23 01:24:11 PM

WGS84 40.11177, -104.89188 Δ ± 11 ft 5038 Δ ± 12 °T NE56



06Nov23 13:24 Water in base of excavation ECMC Environmental Inspection
© 06-Nov-23 01:24:17 PM

WGS84 40.11176, -104.89187 Δ ± 11 ft 5038 \angle ± 12 SE147



06Nov23 13:24 Improperly capped flowlines ECMC Environmental Inspection
© 06-Nov-23 01:24:25 PM

WGS84 40.11174, -104.89190 Δ ^{ft}_{±11ft} 5038 \angle ^{°T}_{±12} E101



06Nov23 13:24 Stormwater run-in to open excavation, inadequate fencing along unstable sidewall ECMC Environmental Inspection

06-Nov-23 01:24:56 PM

WGS84 40.11168, -104.89187 Δ ^{ft}_{±11ft} 5040 \angle ^{°T}_{±12} E84



06Nov23 13:25 ECMC Environmental Inspection
© 06-Nov-23 01:25:30 PM

WGS84 40.11169, -104.89187 Δ ± 11 ft 5042 \triangle ± 12 NE67



06Nov23 13:25 ECMC Environmental Inspection
© 06-Nov-23 01:25:35 PM





WGS84
±16ft

40.11169, -104.89188

ft
±11ft

5041

°T
±12

E83



06Nov23 13:25 Gulley in excavation causing sidewall collapse -ECMC Environmental Inspection
© 06-Nov-23 01:25:46 PM





WGS84 40.11155, -104.89182 Δ ft $\pm 11\text{ft}$ 5038 $\text{°}, \text{T}$ ± 12 NW335



06Nov23 13:27 Gulley formation from run-in to excavation filled with weeds ECMC Environmental Inspection

06-Nov-23 01:27:11 PM

