

TANAKA #1-11

API # 013-06202

Loc. # 379784

FIELD NAME HOLLAND - #36580

Spud Date 4/3/1985

Basin DENVER - JULESBURG

Location SESW 11 2N 69W 6

Elevation GL (ft) 4939

Elevation KB (ft) 4949

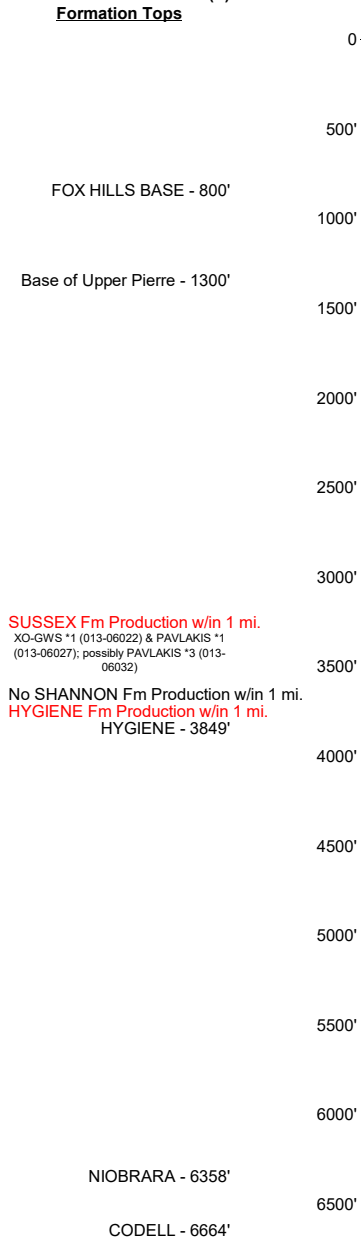
TD (ft) 6800

PBTD (ft) 6708

Formation Tops

EXISTING

PROPOSED



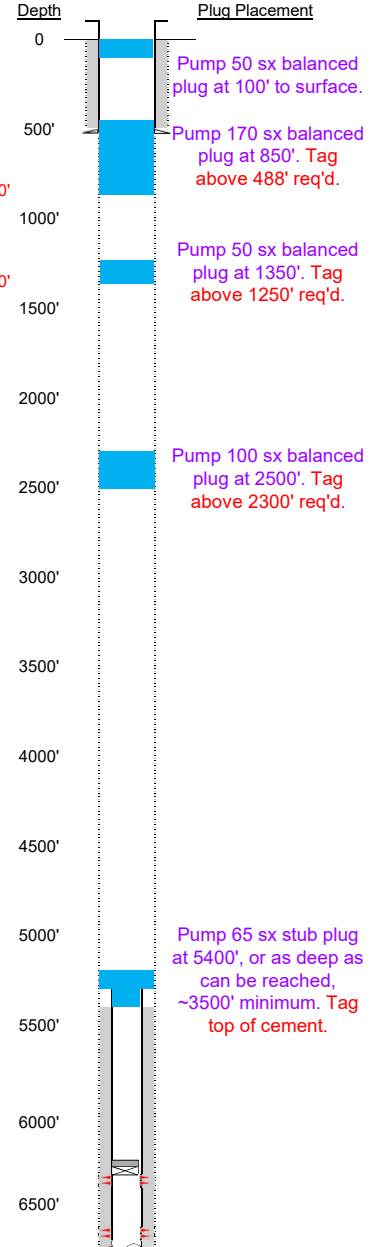
Existing Casing and Cement Coverage
 Plugged 12/20/1995, 10 sx at surface
 SURF: Size: 9.625", Hole Size: 13.5 in.
 Depth: 538 ft., Weight: 36
 Cement: 428 sx, Top: 0 ft., Method: Vis
 40 sx plug at 580', 1/2 in & out of surface csg. CALC 92'
 of cement.

FOX HILLS BASE - 800'
 Deepest DWR w/in 1 mi. = 300'
 Base of Upper Pierre - 1300'

1ST, Size: 4.5", Hole Size: 7.875"
 Depth: 6794', Weight: 11.6
 Cement: 265 sx, TOC: 5420', Method: CBL

Cut off csg at 5313' & pulled
 tubing NONE
 TOC = 5420' (CBL)
 NBRR Perfs 6358' - 6664'
 CODL Perfs 6664' - 6688'
 PBTD (ft) 6708'
 TD (ft) 6800'

CIBP at 6250' with 2 sx



Plug Placement
 Pump 50 sx balanced
 plug at 100' to surface.

Pump 170 sx balanced
 plug at 850'. Tag
 above 488' req'd.

Pump 50 sx balanced
 plug at 1350'. Tag
 above 1250' req'd.

Pump 100 sx balanced
 plug at 2500'. Tag
 above 2300' req'd.

Pump 65 sx stub plug
 at 5400', or as deep as
 can be reached,
 ~3500' minimum. Tag
 top of cement.