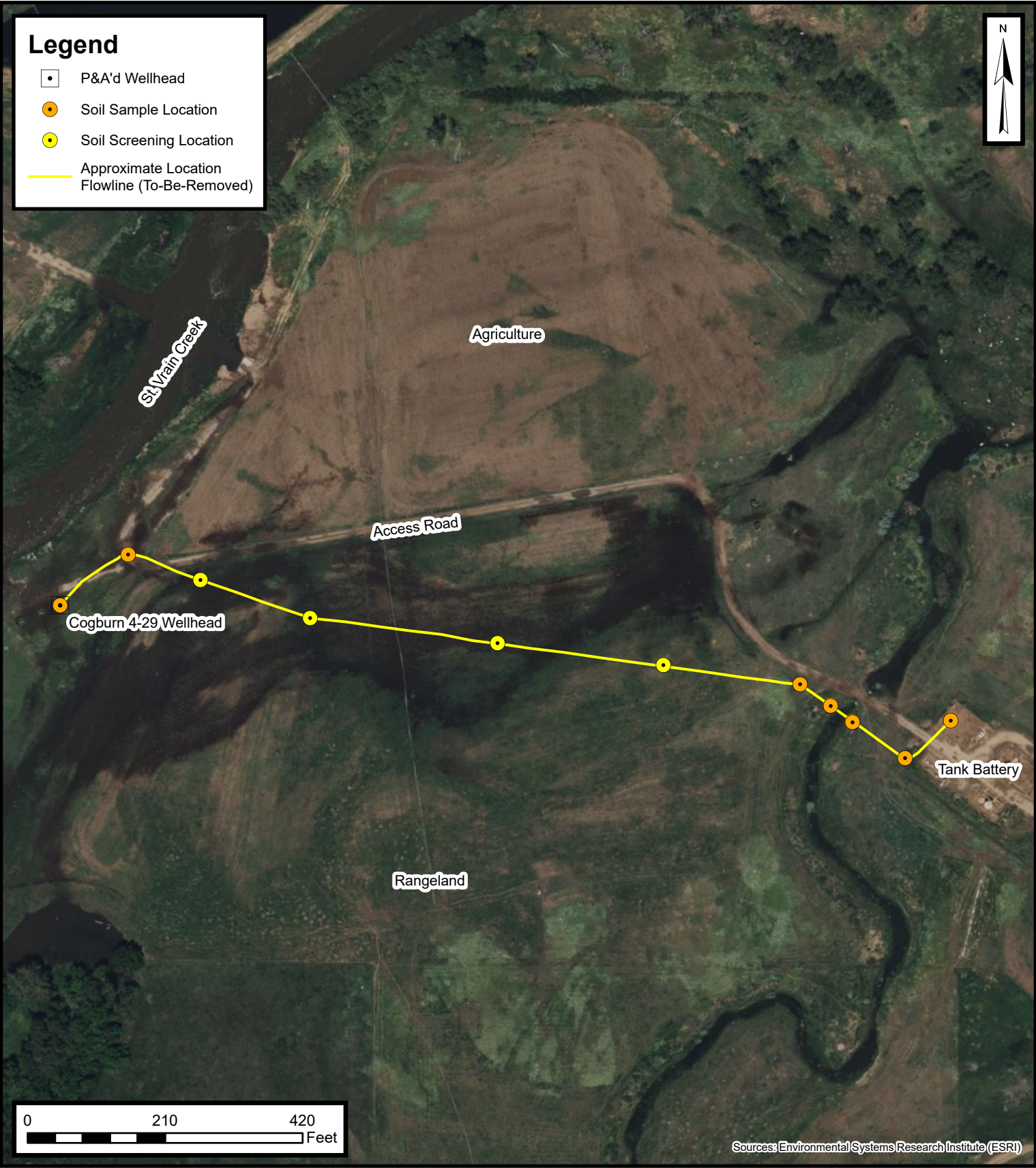


Legend

- P&A'd Wellhead
- Soil Sample Location
- Soil Screening Location
- Approximate Location Flowline (To-Be-Removed)



Default Folder: C:\Users\Owner\OneDrive - ENSOLUM, LLC\Ensolium GIS\ - Projects\Kerr-McGee Oil & Gas Onshore, LP\09A1417568 - Cogburn 4-29 Wellhead

Sources: Environmental Systems Research Institute (ESRI)



Proposed Flowline Excavation and Soil Sampling Locations Map

Cogburn 4-29 Wellhead
Kerr-McGee Oil & Gas Onshore, LP
NWNW SEC 29-T3N-R67W
Weld County, CO

Project Number: 09A1417568

FIGURE

3