

Mason 44-8

SESE Sec. 8-T2N-R66W

API #: 123-21250

Facility ID: 473659

Form 19 Data Package

November 2023

Prepared by Tasman, Inc.



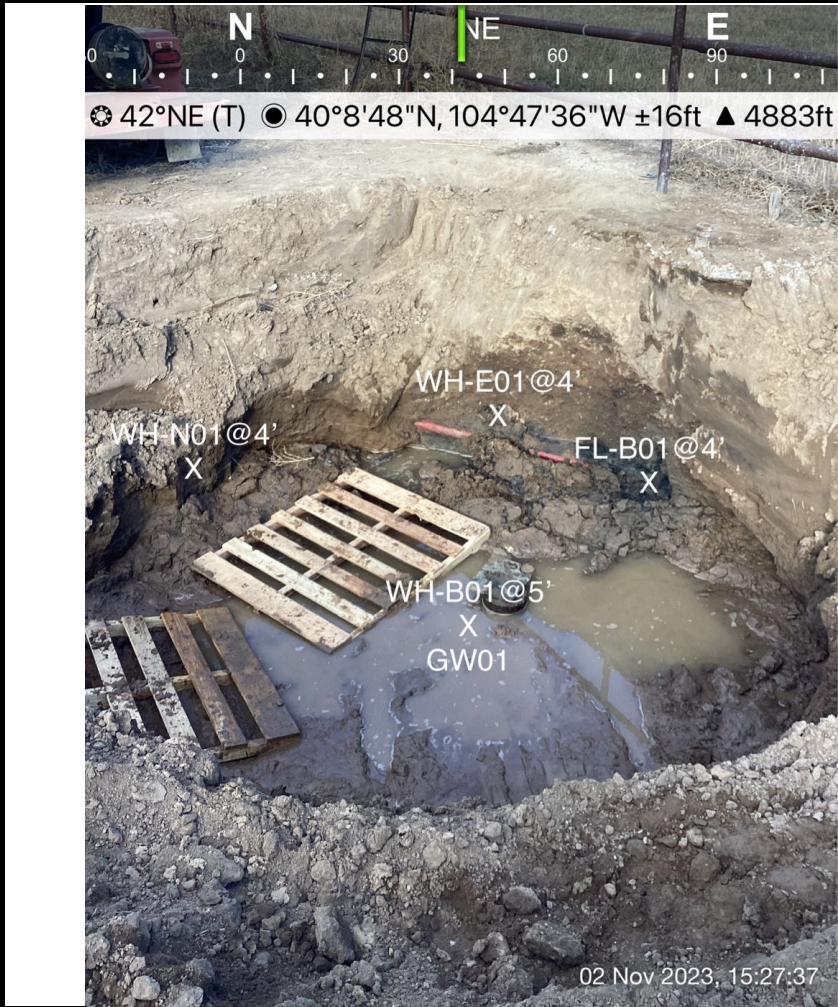
On behalf of Crestone Peak Resources Operating, LLC



PHOTO LOG



Photographic Log



Equipment ID:		Equipment Type:	
Material:	Volume:	Contents:	
Notes/Conditions: Soil sample and screening locations			

Equipment ID:		Equipment Type:	
Material:	Volume:	Contents:	
Notes/Conditions: Soil sample locations			



Photographic Log

<p>NW 300 330 N 0 NE 30 60</p>	<p>SE 120 150 S 180 SW 210 240</p>				
<p>359°N (T) 40°8'49"N, 104°47'37"W ±32ft ▲ 4885ft</p>	<p>180°S (T) 40°8'49"N, 104°47'36"W ±13ft ▲ 4884ft</p>				
<p>02 Nov 2023, 16:08:51</p>	<p>02 Nov 2023, 16:09:02</p>				
<p>Equipment ID:</p>	<p>Equipment Type:</p>	<p>Equipment ID:</p>	<p>Equipment Type:</p>		
<p>Material:</p>	<p>Volume:</p>	<p>Contents:</p>	<p>Material:</p>	<p>Volume:</p>	<p>Contents:</p>
<p>Notes/Conditions: Surrounding land use facing North</p>			<p>Notes/Conditions: Surrounding land use facing South</p>		



Photographic Log



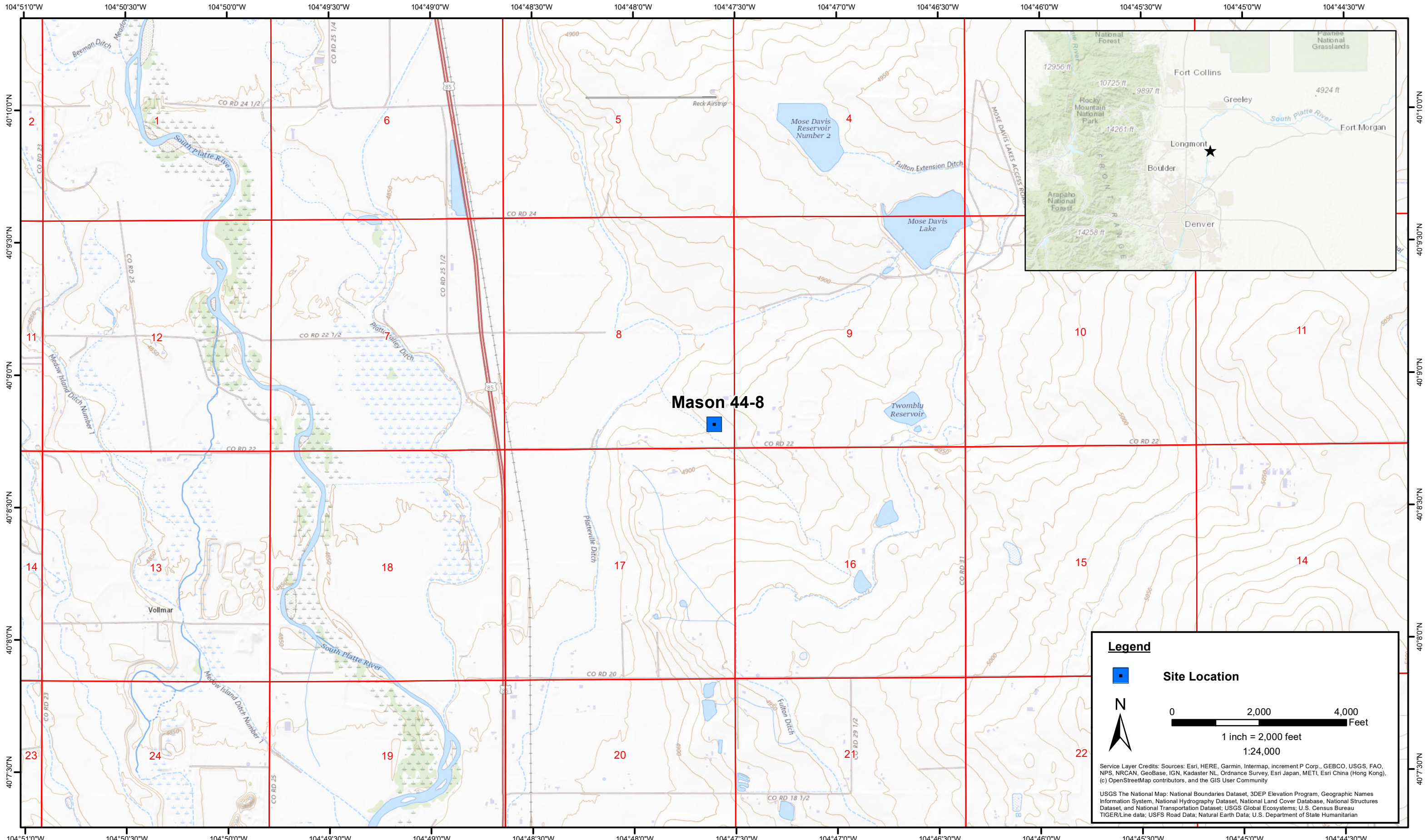
Equipment ID:		Equipment Type:	
Material:	Volume:	Contents:	
Notes/Conditions: Surrounding land use facing East			

Equipment ID:		Equipment Type:	
Material:	Volume:	Contents:	
Notes/Conditions: Surrounding land use facing West			





FIGURES



DATE:	November 2023
DESIGNED BY:	S. Vogt
DRAWN BY:	L. Reed

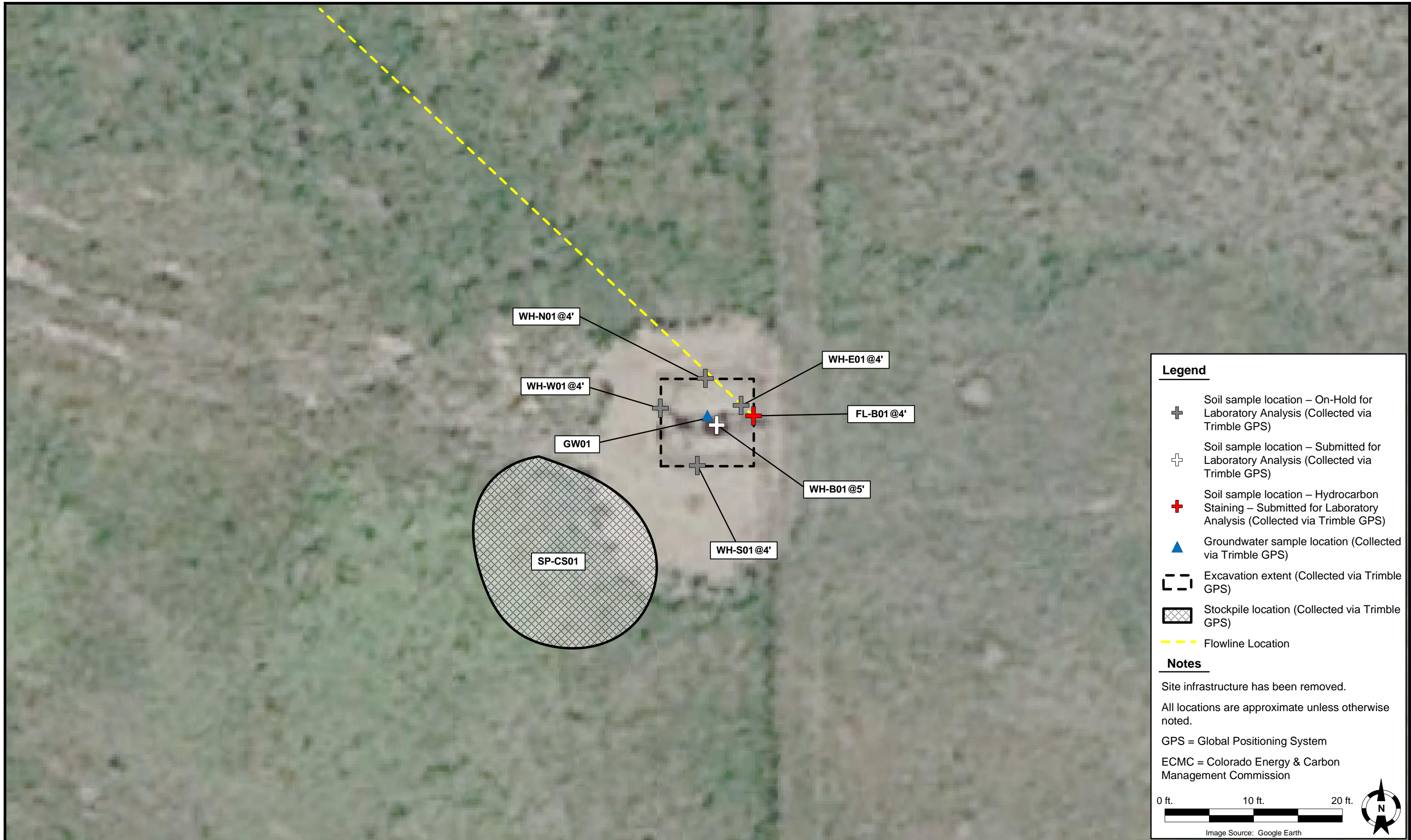


Tasman, Inc.
 6855 W. 119th Ave
 Broomfield, CO 80020

Crestone Peak Resources Operating, LLC
Mason 44-8
 SESE Sec. 8-T2N-R66W
 Weld County, Colorado

Site Location Map

Figure
1



Legend

- Soil sample location – On-Hold for Laboratory Analysis (Collected via Trimble GPS)
- Soil sample location – Submitted for Laboratory Analysis (Collected via Trimble GPS)
- Soil sample location – Hydrocarbon Staining – Submitted for Laboratory Analysis (Collected via Trimble GPS)
- Groundwater sample location (Collected via Trimble GPS)
- Excavation extent (Collected via Trimble GPS)
- Stockpile location (Collected via Trimble GPS)
- Flowline Location

Notes

Site infrastructure has been removed.

All locations are approximate unless otherwise noted.

GPS = Global Positioning System

ECMC = Colorado Energy & Carbon Management Commission

0 ft. 10 ft. 20 ft.

Image Source: Google Earth

DATE:	November 02, 2023
DESIGNED BY:	S. Vogt
DRAWN BY:	S. Vogt



Tasman, Inc.
 6855 W119th Ave.
 Broomfield, CO 80020

Crestone Peak Resources Operating, LLC
Mason 44-8
 SESE Sec. 8-T2N-R66W
 Weld County, Colorado

Soil Sample Location Map

Figure 2