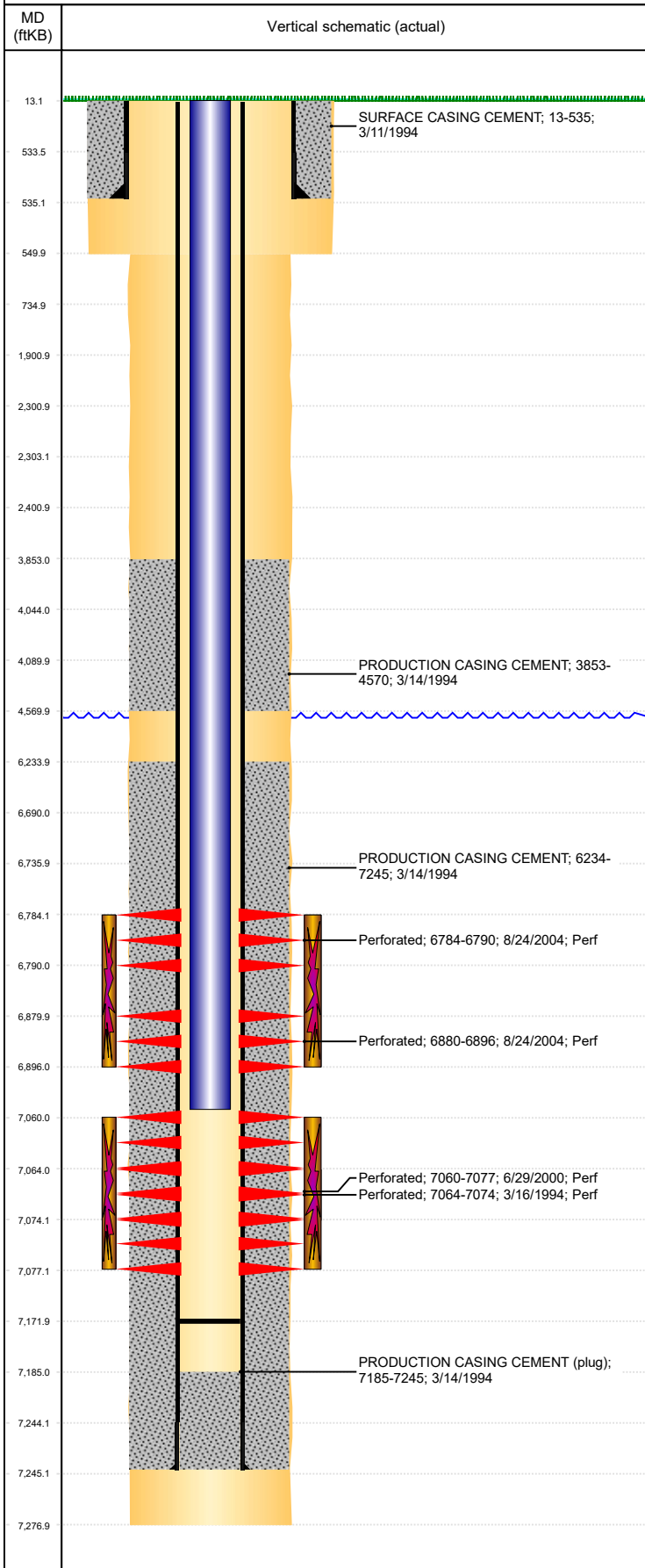




P&A Wellbore For State

Well Name: EASTON 12-0315

Land, Original Hole, 11/2/2023 2:11:12 PM



Well Header

Surface UWI 0512317753		Business Unit Rockies		Gov Auth Dist		Prod Tree Loc Land			
Orig. KB to Gnd (ft) 13.00		Original Spud Date 3/10/1994		Abandon Date		Well Sub-Status SI		High... N	
Comment									

Surface Location (Congressional)

Qtr 3 NE	Qtr 4 NW	Section 12	Twonshp 4	Twonsh... N	Range 65	Rng E... W	Latitude (°) 40.33171167 5	Longitude (°) -104.614097298
-------------	-------------	---------------	--------------	----------------	-------------	---------------	----------------------------------	---------------------------------

Wellbore Sections

Section Des	Hole Size (in)	Act Top (ftKB)	Act Btm (ftKB)
SURFACE	12 1/4	13.0	550.0
PRODUCTION	7 7/8	550.0	7,277.0

Casing Strings

Csg Des	Run Date	OD (in)	Wt/Len (lb/ft)	Grade	Top Depth (MD) (ftKB)	Set Depth (MD) (ftKB)
Surface	3/11/1994	8 5/8	24.00		13	535
Production Casing	3/13/1994	3 1/2	7.70	B-70	13	7245

Cement

Des	Start Date	Top (ftKB)	Btm (ftKB)
SURFACE CASING CEMENT	3/11/1994	13.0	535.0
PRODUCTION CASING CEMENT	3/14/1994	3,853.0	4,570.0
PRODUCTION CASING CEMENT	3/14/1994	6,234.0	7,245.0

Zone Statuses

Zone Name	Status Date	Status	Fluid Type	Job	Prod Method
NIOBRARA	2/9/2010	PR	Water		Flowing
NIOBRARA	11/29/2016	SI			
CODELL	9/2/2000	PR		RE-FRAC, 6/28/2000 00:00	
CODELL	11/26/2004	PR		COMMINGLE ZONES, 10/4/2004 00:00	

Perforation Data

Linked Zone	Explosive Type	Entered Shot Total	Top (ftKB)	Btm (ftKB)	Date
NIOBRARA, Original Hole	A	36	6,784.0	6,790.0	8/24/2004
NIOBRARA, Original Hole	B	96	6,880.0	6,896.0	8/24/2004
CODELL, Original Hole		72	7,060.0	7,077.0	6/29/2000
CODELL, Original Hole		20	7,064.0	7,074.0	3/16/1994

Stimulation Intervals

Zone	Start Date	Top (ftKB)	Btm (ftKB)
NIOBRARA, Original Hole	8/25/2004	6,784.0	6,896.0
NIOBRARA, Original Hole	8/29/2007	6,784.0	6,896.0
CODELL, Original Hole	8/28/2000	7,060.0	7,077.0
CODELL, Original Hole	3/17/1994	7,064.0	7,074.0

Other In Hole

Run Date	Des	Make	OD (in)	Top (ftKB)	Btm (ftKB)

Logs

Date	Type	Depth Top (MD) (ftKB)	Btm (ftKB)
3/14/1994	BOREHOLE IMAGER	6,650	7,275.0
3/14/1994	COMPENSATED DENSITY	4,370	7,276.0
3/14/1994	INDUCTION	535	7,277.0
3/16/1994	ACOUSTIC	3,750	7,185.0
4/5/2011	GYRO	10	7,000.0

Plug Back Total Depths

Date	Type	Com	PBTD (ftKB)
3/16/1994	CEMENT PLUG	DEPTH LOGGER	7,185
9/17/2007	FILL		7,172