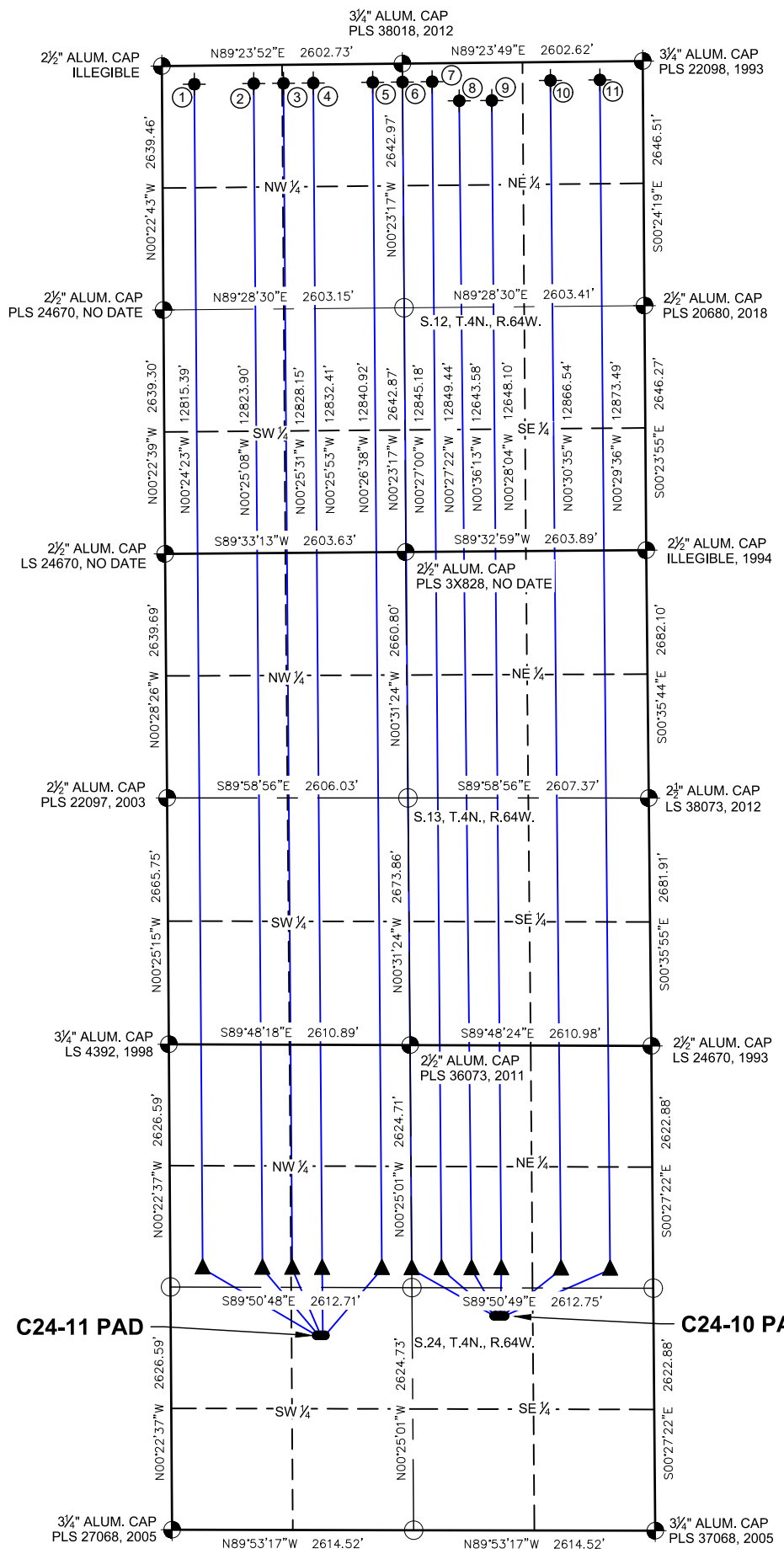
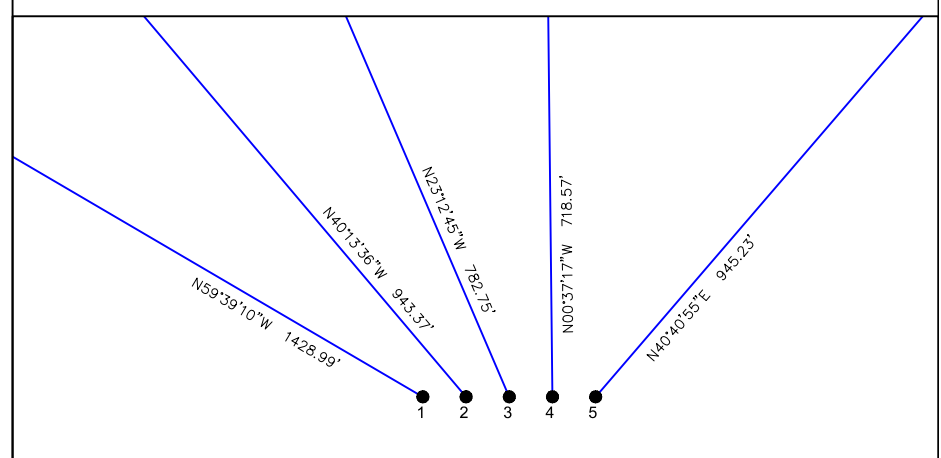


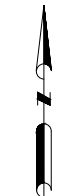
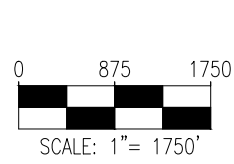
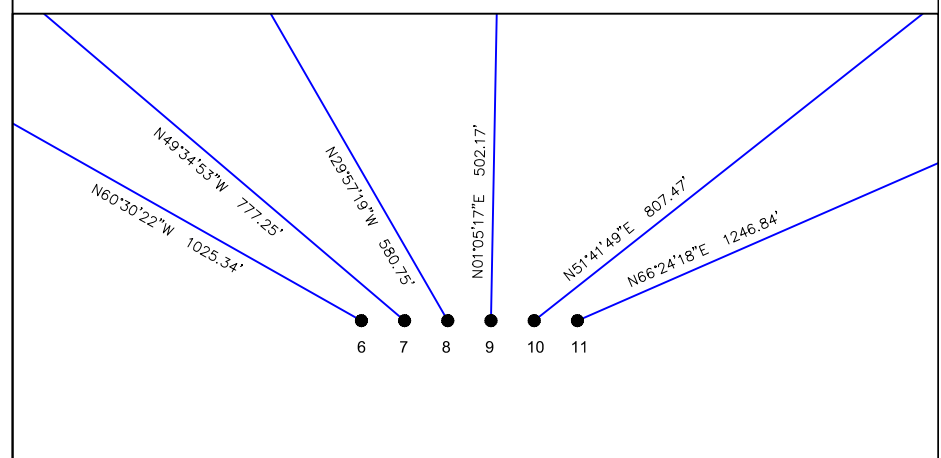
C24-11 PAD & C24-10 PAD MULTI-WELL LOCATION PLAT / MULTI-WELL PLAN T4N R64W SECTION 24



PROPOSED WELLBORE DIRECTION DATA C24-11 PAD SLOTS 1-5



PROPOSED WELLBORE DIRECTION DATA C24-10 PAD SLOTS 6-11



LEGEND

- = FOUND MONUMENT
- = CALCULATED POSITION
- = PROPOSED WELL
- = BOTTOM HOLE
- = TOP OF PRODUCTION ZONE

Notes:

- 1) All bearings are Grid Bearings of the Colorado State Plane Coordinate System, North Zone, North American Datum 1983/2011. The lineal dimensions as shown herein are grid distances based upon the "U.S. Survey Foot." To get ground distances multiply shown distance by 1.00026176.
- 2) Distances are measured at 90° from section line of the Sixth Principal Meridian, County of Weld, State of Colorado.
- 3) Ground elevations are based on an observed GPS elevation (NAVD 1988 DATUM).
- 4) Surface use: "RANGELAND"
- 5) C24-11 Pad Instrument Operator: Dominick Davis
- 6) C24-10 Pad Instrument Operator: David Born
- 7) This map does not represent a boundary survey.

DISCLAIMER:
THIS PLOT DOES NOT REPRESENT A MONUMENTED LAND SURVEY AND SHOULD NOT BE RELIED UPON TO DETERMINE BOUNDARY LINES, PROPERTY OWNERSHIP OR OTHER PROPERTY INTERESTS. PARCEL LINES, IF DEPICTED HAVE NOT BEEN FIELD VERIFIED AND MAY BE BASED UPON PUBLICLY AVAILABLE DATA THAT ALSO HAS NOT BEEN INDEPENDENTLY VERIFIED.

SURFACE HOLE LOCATION

TOP OF PRODUCTIVE ZONE

BOTTOM HOLE LOCATION

SLOT	WELL NAME	LATITUDE	LONGITUDE	FOOTAGE	QTR-QTR	ELEV.	PDOP	TOP OF PRODUCTIVE ZONE		BOTTOM HOLE LOCATION	
								FOOTAGE	FOOTAGE	FOOTAGE	FOOTAGE
1	STATE C24-785	40.296427°N	104.502797°W	2107' FSL 1578' FWL	NESW	4701'	1.4	2426' FNL	350' FWL	200' FNL	350' FWL
2	STATE C24-775	40.296426°N	104.502717°W	2107' FSL 1601' FWL	NESW	4702'	1.3	2426' FNL	996' FWL	200' FNL	994' FWL
3	STATE C24-770	40.296425°N	104.502636°W	2107' FSL 1623' FWL	NESW	4702'	1.3	2425' FNL	1320' FWL	200' FNL	1315' FWL
4	STATE C24-765	40.296425°N	104.502555°W	2107' FSL 1646' FWL	NESW	4704'	1.3	2425' FNL	1643' FWL	200' FNL	1637' FWL
5	STATE C24-755	40.296424°N	104.502475°W	2107' FSL 1668' FWL	NESW	4708'	1.3	2425' FNL	2289' FWL	200' FNL	2281' FWL
6	STATE C24-750	40.296947°N	104.495899°W	2322' FSL 1724' FEL	NWSE	4705'	1.3	2425' FNL	2612' FEL	200' FNL	2603' FWL
7	STATE C24-745	40.296946°N	104.495819°W	2322' FSL 1702' FEL	NWSE	4708'	1.3	2424' FNL	2289' FEL	200' FNL	2281' FEL
8	STATE C24-735	40.296945°N	104.495738°W	2322' FSL 1679' FEL	NWSE	4712'	1.1	2424' FNL	1965' FEL	410' FNL	1989' FEL
9	STATE C24-730	40.296945°N	104.495657°W	2322' FSL 1657' FEL	NWSE	4717'	1.1	2424' FNL	1643' FEL	410' FNL	1637' FEL
10	STATE C24-725	40.296944°N	104.495577°W	2322' FSL 1634' FEL	NWSE	4721'	1.2	2423' FNL	996' FEL	200' FNL	1000' FEL
11	STATE C24-717	40.296943°N	104.495496°W	2322' FSL 1612' FEL	NWSE	4726'	1.2	2423' FNL	465' FEL	200' FNL	465' FEL



FIELD DATE: 11-18-22
DRAWING DATE: 07-06-23
DRAWN BY: CSG
CHECKED BY: HJL

SURFACE LOCATION:
SEC. 24, T4N, R64W, 6TH P.M.
WELD COUNTY, COLORADO

PUBLICLY AVAILABLE DATA SOURCES HAVE NOT BEEN INDEPENDENTLY VERIFIED BY ASCENT.

