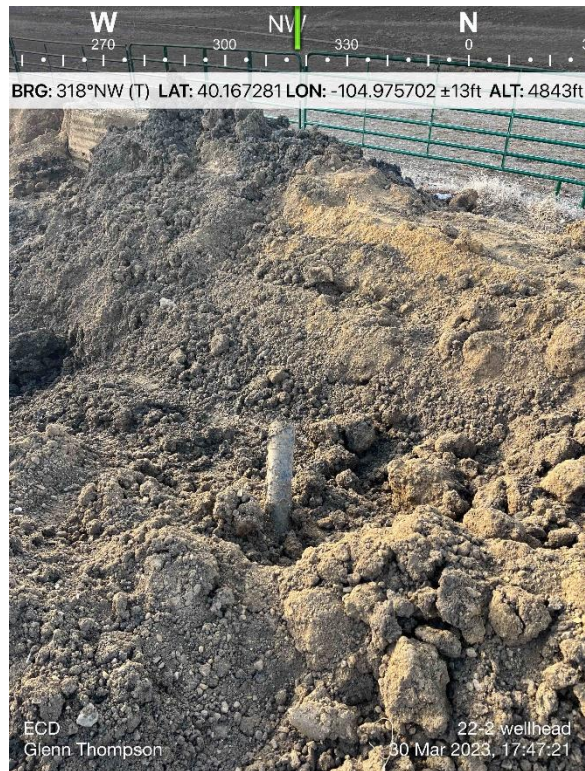
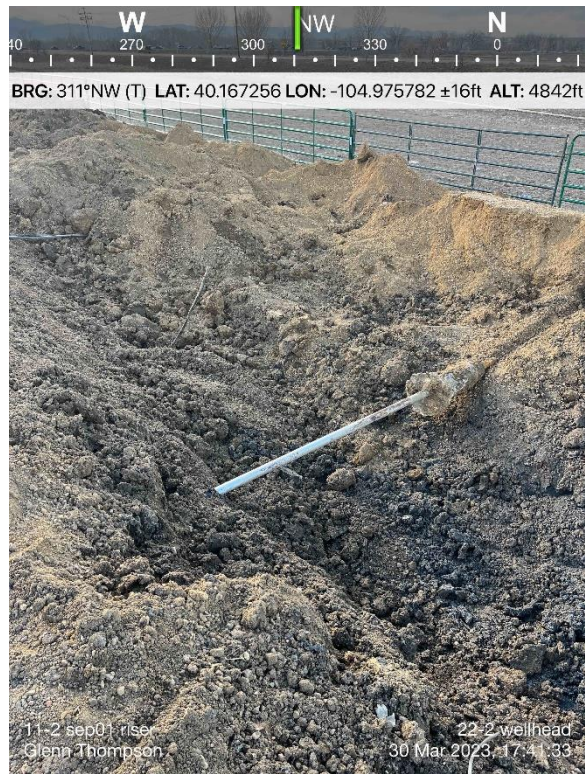


PHOTO LOG
JUNCTION 11, 12, 22-2 O SA FACILITY
WELD COUNTY, COLORADO
KERR-MCGEE OIL & GAS ONSHORE, LP

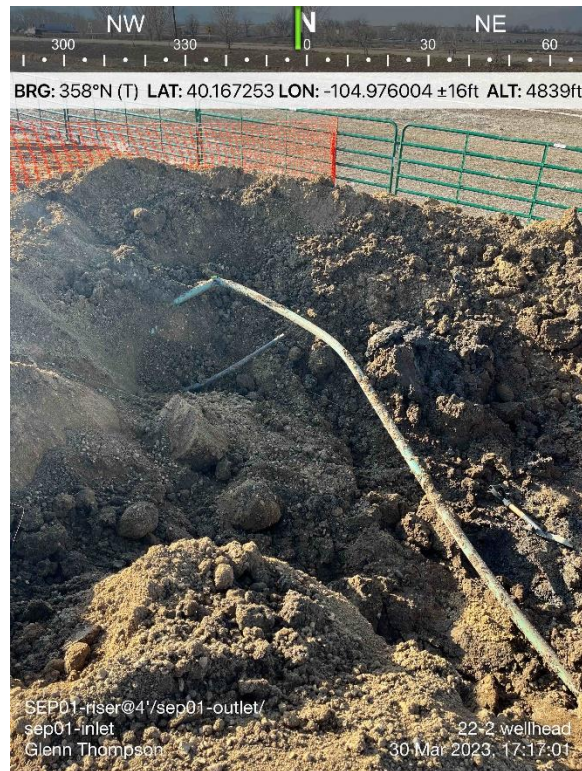


Emissions Control Device Excavation

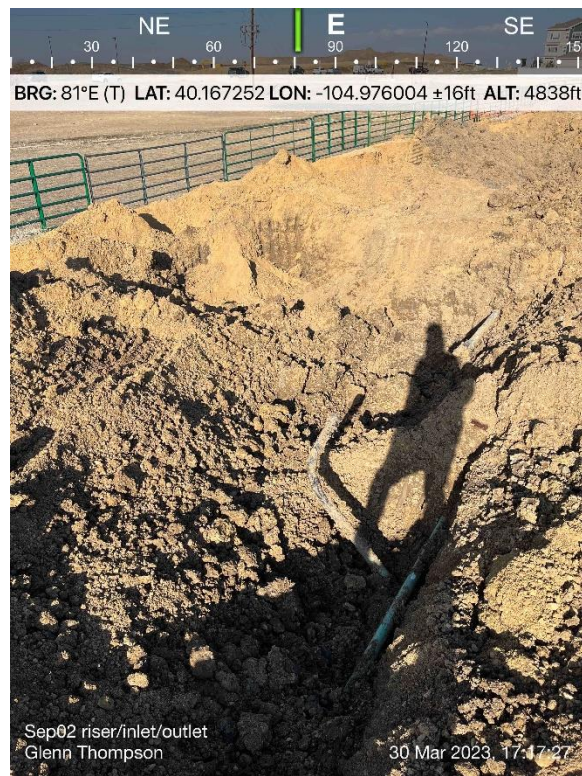


Separator Riser 01 Excavation

PHOTO LOG
JUNCTION 11, 12, 22-2 O SA FACILITY
WELD COUNTY, COLORADO
KERR-MCGEE OIL & GAS ONSHORE, LP

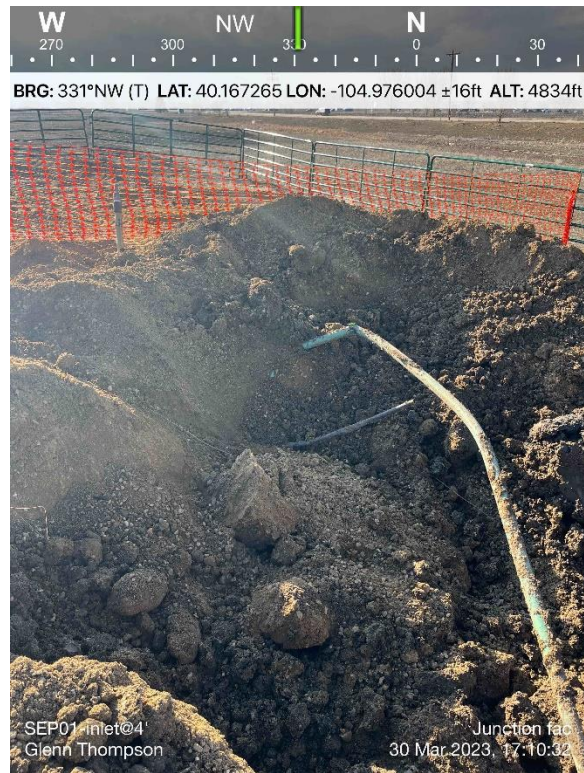


Separator Riser 01 Excavation

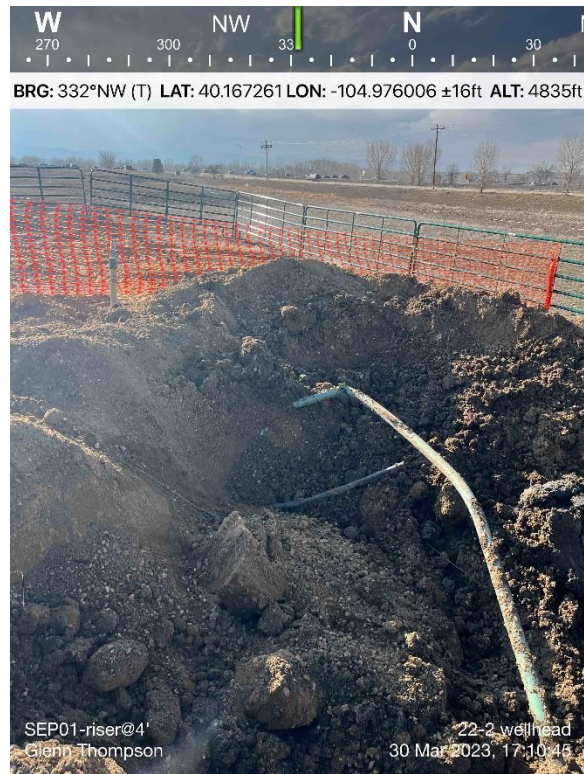


Separator Riser 02 Excavation

PHOTO LOG
JUNCTION 11, 12, 22-2 O SA FACILITY
WELD COUNTY, COLORADO
KERR-MCGEE OIL & GAS ONSHORE, LP

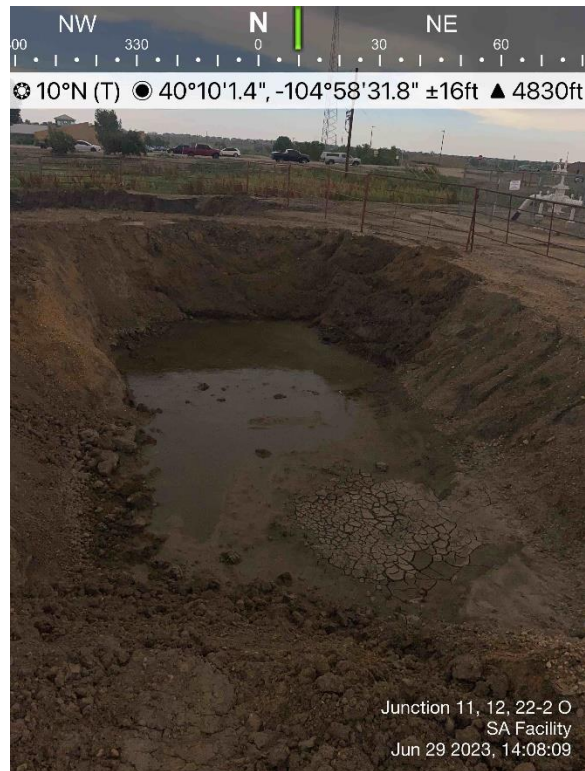


Separator Inlet 01 Excavation



Separator Riser 01 Excavation

PHOTO LOG
JUNCTION 11, 12, 22-2 O SA FACILITY
WELD COUNTY, COLORADO
KERR-MCGEE OIL & GAS ONSHORE, LP



Groundwater in AST Excavation