

PETRO OPERATING CO, LLC

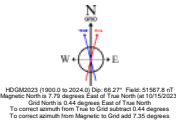
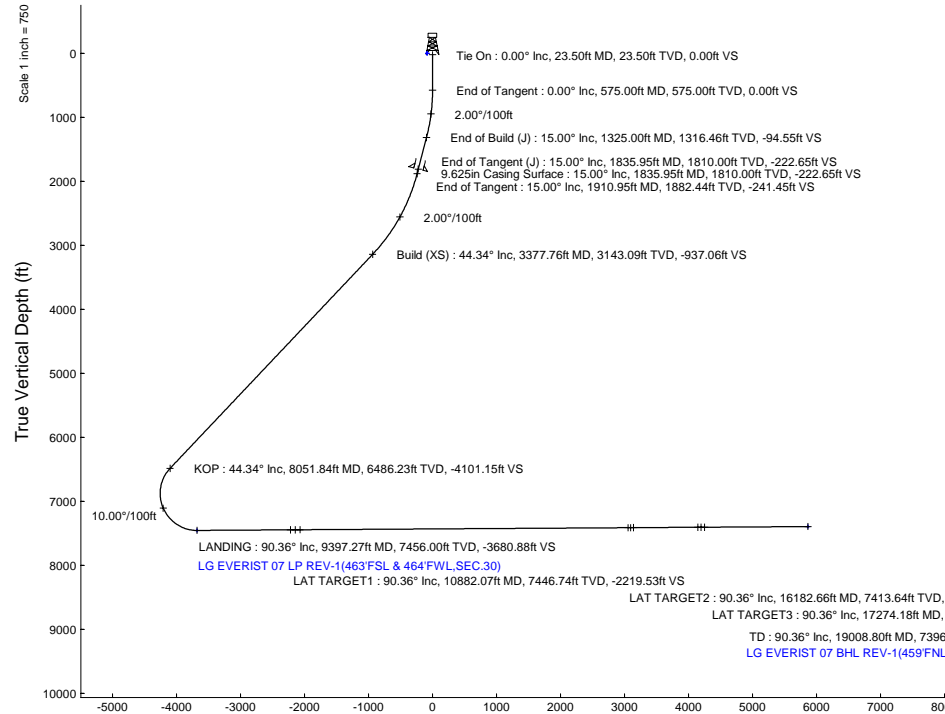
Location:	COLORADO	Slot:	SLOT#07 LG EVERIST 07 (1066°FNL & 1120°FWL,SEC.30)
Field:	WELD COUNTY (NAD83/GRID)	Well:	LG EVERIST 07
Facility:	SEC.30-T02N-R66W	Wellbore:	LG EVERIST 07 PWB
Plot reference wellpath is LG EVERIST 07 PWP Rev-A.0		Grid System: NAD83 / Lambert Colorado SP, Northern Zone (501), US feet	
True vertical depths are referenced to Ensign 140 (23.5) (RKB)		North Reference: Grid north	
Reference wellpath measured depths are referenced to Ensign 140 (23.5) (RKB)		Scale: True distance	
Ensign 140 (23.5) (RKB) to Mean Sea Level: 4897.5 feet		Coordinates are in feet referenced to Slot	
Mean Sea Level to Ground level (At Slot: SLOT#07 LG EVERIST 07 (1066°FNL & 1120°FWL,SEC.30)): -4874 feet		Depths are in feet	
Offset wellpath MDs are referenced to each path's default MD datum		Created by: painsetr on 2023-10-15; Database: WellArchitectDB	

Location Information					
Facility Name			Grid East (US ft)	Grid North (US ft)	Latitude
SEC.30-T02N-R66W			3188545.810	1284807.010	40°06'47.5934"N
Slot	Local N (ft)	Local E (ft)	Grid East (US ft)	Grid North (US ft)	Latitude
SLOT#07 LG EVERIST 07 (1066°FNL & 1120°FWL,SEC.30)	78.28	-44.43	3188501.385	1284885.287	40°06'48.3703"N
Ensign 140 (23.5) (RKB) to Ground level (At Slot: SLOT#07 LG EVERIST 07 (1066°FNL & 1120°FWL,SEC.30))			23.5ft		
Mean Sea Level to Ground level (At Slot: SLOT#07 LG EVERIST 07 (1066°FNL & 1120°FWL,SEC.30))			-4874ft		
Ensign 140 (23.5) (RKB) to Mean Sea Level			4897.5ft		

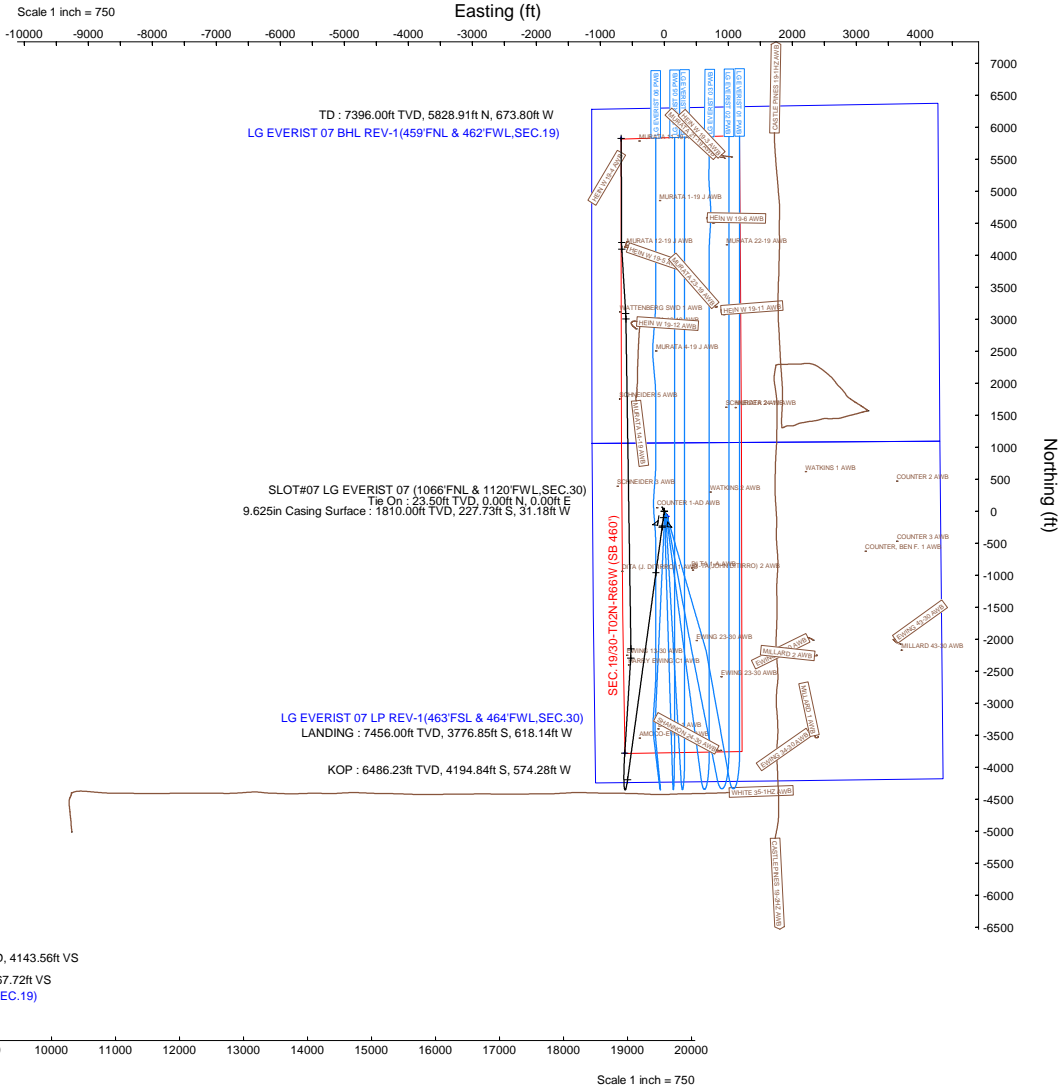
Survey Program					
Start MD (ft)	End MD (ft)	Tool	Model	Log Name/Comment	Wellbore
23.50	1835.95	BH NavTrak (2019)	BH NavTrak (2019) (Axial+IFR1+SAG)		LG EVERIST 07 PWB
1835.95	19008.80	BH AutoTrak Curve/xpress (2019)	BH AutoTrak Curve/xpress (2019) (IFR1, SAG, Short spacing)		LG EVERIST 07 PWB

Bottom Hole Location									
MD (ft)	Inc (°)	Az (°)	TVD (ft)	Local N (ft)	Local E (ft)	Grid East (US ft)	Grid North (US ft)	Latitude	Longitude
19008.80	90.358	359.777	7396.00	5828.91	-673.80	3187827.62	1290713.95	40°07'46.0211"N	104°49'41.7842"W

Targets									
Name	MD (ft)	TVD (ft)	Local N (ft)	Local E (ft)	Grid East (US ft)	Grid North (US ft)	Latitude	Longitude	
SEC.19-T02N-R66W	N/A	0.00	-78.28	44.42	3188545.81	1284807.01	40°06'47.5934"N	104°49'33.1162"W	
SEC.19/30-T02N-R66W (SB 460)	N/A	0.00	-78.28	44.42	3188545.81	1284807.01	40°06'47.5934"N	104°49'33.1162"W	
SEC.30-T02N-R66W	N/A	0.00	-78.28	44.42	3188545.81	1284807.01	40°06'47.5934"N	104°49'33.1162"W	
LG EVERIST 07 BHL REV-1(459°FNL & 462°FWL,SEC.19)	19008.80	7396.00	5828.91	-673.80	3187827.62	1290713.95	40°07'46.0211"N	104°49'41.7842"W	
LG EVERIST 07 LP REV-1(463°FSL & 464°FWL,SEC.30)	9397.27	7456.00	-3776.85	-618.14	3187883.27	1281108.60	40°06'11.0944"N	104°49'42.0043"W	



Well Profile Data							
Design Comment	MD (ft)	Inc (°)	Az (°)	TVD (ft)	Local N (ft)	Local E (ft)	VS (ft)
Tie On	23.50	0.000	187.795	23.50	0.00	0.00	0.00
End of Tangent	575.00	0.000	187.795	575.00	0.00	0.00	0.00
End of Build (J)	1325.00	15.000	187.795	1316.46	-96.71	-13.24	-94.55
End of Tangent (J)	1835.95	15.000	187.795	1810.00	-227.73	-31.18	-222.65
End of Tangent	1910.95	15.000	187.795	1882.44	-246.97	-33.81	-241.45
Build (XS)	3377.76	44.336	187.796	3143.09	-958.46	-131.21	-937.06
KOP	8051.84	44.336	187.796	6486.23	-4194.84	-574.28	-4101.15
LANDING	9397.27	90.357	3.597	7456.00	-3776.85	-618.14	-3680.88
LAT TARGET1	10882.07	90.357	3.597	7446.74	-2295.00	-525.00	-2219.53
3D Arc (J)	11031.07	90.358	359.126	7445.81	-2146.08	-521.46	-2072.00
LAT TARGET2	16182.66	90.358	359.126	7413.64	3004.81	-600.00	3053.83
3D Arc (J)	16269.01	90.357	356.536	7413.10	3091.09	-603.27	3139.91
LAT TARGET3	17274.18	90.357	356.536	7406.83	4094.40	-664.00	4143.56
3D Arc (J)	17382.22	90.358	359.777	7406.16	4202.37	-667.47	4251.22
TD	19008.80	90.358	359.777	7396.00	5828.91	-673.80	5867.72



# Planned Wellpath Report

LG EVERIST 07 PWP Rev-A.0

Page 1 of 8

REFERENCE WELLPATH IDENTIFICATION			
Operator	PETRO OPERATING CO, LLC	Well	LG EVERIST 07
Field	WELD COUNTY (NAD83/GRID)	API/Legal	
Facility	SEC.30-T02N-R66W	Wellbore	LG EVERIST 07 PWB
Slot	SLOT#07 LG EVERIST 07 (1066'FNL & 1120'FWL,SEC.30)		

REPORT SETUP INFORMATION			
Projection System	NAD83 / Lambert Colorado SP, Northern Zone (501), US feet	Software System	WellArchitect® 6.0
North Reference	Grid	User	Painsetr
Scale	0.999960	Report Generated	10/15/2023 at 2:24:18 PM
Convergence at slot	0.44° East	Database	WellArchitectDB

WELLPATH LOCATION						
	Local coordinates		Grid coordinates		Geographic coordinates	
	North[ft]	East[ft]	Easting[US ft]	Northing[US ft]	Latitude	Longitude
Slot Location	78.28	-44.43	3188501.39	1284885.29	40.1134362°	-104.8260223°
Facility Reference Pt			3188545.81	1284807.01	40.1132204°	-104.8258656°
Field Reference Pt			3188545.81	1284807.01	40.1132204°	-104.8258656°

WELLPATH DATUM			
Calculation method	Minimum curvature	Ensign 140 (23.5') (RKB) to Facility Vertical Datum	4897.50ft
Horizontal Reference Pt	Slot	Ensign 140 (23.5') (RKB) to Mean Sea Level	4897.50ft
Vertical Reference Pt	Ensign 140 (23.5') (RKB)	Ensign 140 (23.5') (RKB) to Ground Level at Slot (SLOT#07 LG EVERIST 07 (1066'FNL & 1120'FWL,SEC.30))	23.50ft
MD Reference Pt	Ensign 140 (23.5') (RKB)	Section Origin	N 0.00, E 0.00 ft
Field Vertical Reference	Mean Sea Level	Section Azimuth	353.41°

# Planned Wellpath Report

LG EVERIST 07 PWP Rev-A.0

Page 2 of 8

## REFERENCE WELLPATH IDENTIFICATION

Operator	PETRO OPERATING CO, LLC	Well	LG EVERIST 07
Field	WELD COUNTY (NAD83/GRID)	API/Legal	
Facility	SEC.30-T02N-R66W	Wellbore	LG EVERIST 07 PWB
Slot	SLOT#07 LG EVERIST 07 (1066'FNL & 1120'FWL,SEC.30)		

## WELLPATH DATA (205 stations) † = interpolated, ‡ = extrapolated station

MD [ft]	Inclination [°]	Azimuth [°]	TVD [ft]	Vert Sect [ft]	North [ft]	East [ft]	Grid East [US ft]	Grid North [US ft]	Latitude	Longitude	DLS [°/100ft]	Comments
0.00†	0.000	187.795	0.00	0.00	0.00	0.00	3188501.39	1284885.29	40.1134362	-104.8260223	0.00	
23.50	0.000	187.795	23.50	0.00	0.00	0.00	3188501.39	1284885.29	40.1134362	-104.8260223	0.00	Tie On
123.50†	0.000	187.795	123.50	0.00	0.00	0.00	3188501.39	1284885.29	40.1134362	-104.8260223	0.00	
223.50†	0.000	187.795	223.50	0.00	0.00	0.00	3188501.39	1284885.29	40.1134362	-104.8260223	0.00	
323.50†	0.000	187.795	323.50	0.00	0.00	0.00	3188501.39	1284885.29	40.1134362	-104.8260223	0.00	
423.50†	0.000	187.795	423.50	0.00	0.00	0.00	3188501.39	1284885.29	40.1134362	-104.8260223	0.00	
523.50†	0.000	187.795	523.50	0.00	0.00	0.00	3188501.39	1284885.29	40.1134362	-104.8260223	0.00	
575.00	0.000	187.795	575.00	0.00	0.00	0.00	3188501.39	1284885.29	40.1134362	-104.8260223	0.00	End of Tangent
623.50†	0.970	187.795	623.50	-0.40	-0.41	-0.06	3188501.33	1284884.88	40.1134351	-104.8260225	2.00	
723.50†	2.970	187.795	723.43	-3.73	-3.81	-0.52	3188500.86	1284881.47	40.1134257	-104.8260243	2.00	
823.50†	4.970	187.795	823.19	-10.43	-10.67	-1.46	3188499.92	1284874.62	40.1134069	-104.8260278	2.00	
923.50†	6.970	187.795	922.64	-20.51	-20.98	-2.87	3188498.51	1284864.31	40.1133787	-104.8260331	2.00	
1023.50†	8.970	187.795	1021.67	-33.94	-34.71	-4.75	3188496.63	1284850.58	40.1133410	-104.8260402	2.00	
1123.50†	10.970	187.795	1120.15	-50.71	-51.86	-7.10	3188494.29	1284833.42	40.1132940	-104.8260491	2.00	
1223.50†	12.970	187.795	1217.98	-70.79	-72.41	-9.91	3188491.47	1284812.88	40.1132376	-104.8260597	2.00	
1323.50†	14.970	187.795	1315.01	-94.18	-96.33	-13.19	3188488.20	1284788.96	40.1131721	-104.8260721	2.00	
1325.00	15.000	187.795	1316.46	-94.55	-96.71	-13.24	3188488.15	1284788.58	40.1131710	-104.8260723	2.00	End of Build (J)
1423.50†	15.000	187.795	1411.61	-119.25	-121.97	-16.70	3188484.69	1284763.32	40.1131017	-104.8260853	0.00	
1523.50†	15.000	187.795	1508.20	-144.32	-147.61	-20.21	3188481.18	1284737.68	40.1130314	-104.8260986	0.00	
1623.50†	15.000	187.795	1604.79	-169.39	-173.26	-23.72	3188477.67	1284712.04	40.1129611	-104.8261118	0.00	
1723.50†	15.000	187.795	1701.38	-194.46	-198.90	-27.23	3188474.16	1284686.40	40.1128908	-104.8261251	0.00	
1823.50†	15.000	187.795	1797.98	-219.53	-224.54	-30.74	3188470.65	1284660.75	40.1128205	-104.8261383	0.00	
1835.95	15.000	187.795	1810.00	-222.65	-227.73	-31.18	3188470.21	1284657.56	40.1128117	-104.8261400	0.00	End of Tangent (J)
1910.95	15.000	187.795	1882.44	-241.45	-246.97	-33.81	3188467.58	1284638.33	40.1127590	-104.8261499	0.00	End of Tangent
1923.50†	15.251	187.795	1894.56	-244.62	-250.21	-34.25	3188467.13	1284635.09	40.1127501	-104.8261516	2.00	
2023.50†	17.251	187.795	1990.56	-271.73	-277.94	-38.05	3188463.34	1284607.36	40.1126741	-104.8261659	2.00	
2123.50†	19.251	187.795	2085.53	-302.06	-308.96	-42.30	3188459.09	1284576.34	40.1125890	-104.8261819	2.00	
2223.50†	21.251	187.795	2179.34	-335.59	-343.26	-46.99	3188454.40	1284542.05	40.1124950	-104.8261996	2.00	
2323.50†	23.251	187.795	2271.89	-372.27	-380.77	-52.13	3188449.26	1284504.53	40.1123921	-104.8262190	2.00	
2423.50†	25.251	187.795	2363.06	-412.05	-421.46	-57.70	3188443.69	1284463.84	40.1122805	-104.8262400	2.00	
2523.50†	27.251	187.795	2452.74	-454.89	-465.28	-63.70	3188437.69	1284420.03	40.1121603	-104.8262627	2.00	
2623.50†	29.251	187.795	2540.82	-500.74	-512.17	-70.11	3188431.27	1284373.13	40.1120318	-104.8262869	2.00	
2723.50†	31.251	187.795	2627.20	-549.53	-562.09	-76.95	3188424.44	1284323.22	40.1118949	-104.8263127	2.00	
2823.50†	33.251	187.795	2711.77	-601.22	-614.95	-84.19	3188417.20	1284270.36	40.1117499	-104.8263400	2.00	
2923.50†	35.251	187.795	2794.42	-655.73	-670.71	-91.82	3188409.57	1284214.60	40.1115970	-104.8263688	2.00	
3023.50†	37.251	187.795	2875.06	-713.01	-729.29	-99.84	3188401.55	1284156.02	40.1114364	-104.8263991	2.00	
3123.50†	39.251	187.795	2953.59	-772.97	-790.63	-108.24	3188393.15	1284094.69	40.1112682	-104.8264307	2.00	
3223.50†	41.251	187.796	3029.91	-835.56	-854.64	-117.00	3188384.39	1284030.68	40.1110927	-104.8264638	2.00	
3323.50†	43.251	187.796	3103.92	-900.68	-921.26	-126.12	3188375.27	1283964.07	40.1109100	-104.8264982	2.00	
3377.76	44.336	187.796	3143.09	-937.06	-958.46	-131.21	3188370.18	1283926.86	40.1108080	-104.8265174	2.00	Build (XS)
3423.50†	44.336	187.796	3175.81	-968.02	-990.13	-135.55	3188365.84	1283895.20	40.1107212	-104.8265338	0.00	
3523.50†	44.336	187.796	3247.33	-1035.71	-1059.37	-145.03	3188356.36	1283825.96	40.1105313	-104.8265696	0.00	
3623.50†	44.336	187.796	3318.86	-1103.41	-1128.61	-154.51	3188346.88	1283756.72	40.1103414	-104.8266053	0.00	
3723.50†	44.336	187.796	3390.38	-1171.10	-1197.85	-163.99	3188337.41	1283687.48	40.1101516	-104.8266411	0.00	
3823.50†	44.336	187.796	3461.91	-1238.79	-1267.10	-173.47	3188327.93	1283618.24	40.1099617	-104.8266769	0.00	

# Planned Wellpath Report

LG EVERIST 07 PWP Rev-A.0

Page 3 of 8

## REFERENCE WELLPATH IDENTIFICATION

Operator	PETRO OPERATING CO, LLC	Well	LG EVERIST 07
Field	WELD COUNTY (NAD83/GRID)	API/Legal	
Facility	SEC.30-T02N-R66W	Wellbore	LG EVERIST 07 PWB
Slot	SLOT#07 LG EVERIST 07 (1066'FNL & 1120'FWL, SEC.30)		

## WELLPATH DATA (205 stations) † = interpolated, ‡ = extrapolated station

MD [ft]	Inclination [°]	Azimuth [°]	TVD [ft]	Vert Sect [ft]	North [ft]	East [ft]	Grid East [US ft]	Grid North [US ft]	Latitude	Longitude	DLS [°/100ft]	Comments
3923.50†	44.336	187.796	3533.43	-1306.49	-1336.34	-182.95	3188318.45	1283549.01	40.1097718	-104.8267126	0.00	
4023.50†	44.336	187.796	3604.96	-1374.18	-1405.58	-192.42	3188308.97	1283479.77	40.1095820	-104.8267484	0.00	
4123.50†	44.336	187.796	3676.48	-1441.88	-1474.82	-201.90	3188299.49	1283410.53	40.1093921	-104.8267842	0.00	
4223.50†	44.336	187.796	3748.01	-1509.57	-1544.06	-211.38	3188290.01	1283341.29	40.1092022	-104.8268199	0.00	
4323.50†	44.336	187.796	3819.53	-1577.27	-1613.30	-220.86	3188280.53	1283272.05	40.1090124	-104.8268557	0.00	
4423.50†	44.336	187.796	3891.06	-1644.96	-1682.54	-230.34	3188271.05	1283202.82	40.1088225	-104.8268915	0.00	
4523.50†	44.336	187.796	3962.58	-1712.66	-1751.78	-239.82	3188261.57	1283133.58	40.1086326	-104.8269272	0.00	
4623.50†	44.336	187.796	4034.11	-1780.35	-1821.02	-249.30	3188252.10	1283064.34	40.1084428	-104.8269630	0.00	
4723.50†	44.336	187.796	4105.63	-1848.04	-1890.26	-258.78	3188242.62	1282995.10	40.1082529	-104.8269988	0.00	
4823.50†	44.336	187.796	4177.16	-1915.74	-1959.51	-268.26	3188233.14	1282925.86	40.1080630	-104.8270345	0.00	
4923.50†	44.336	187.796	4248.68	-1983.43	-2028.75	-277.74	3188223.66	1282856.63	40.1078732	-104.8270703	0.00	
5023.50†	44.336	187.796	4320.21	-2051.13	-2097.99	-287.22	3188214.18	1282787.39	40.1076833	-104.8271061	0.00	
5123.50†	44.336	187.796	4391.73	-2118.82	-2167.23	-296.70	3188204.70	1282718.15	40.1074934	-104.8271418	0.00	
5223.50†	44.336	187.796	4463.26	-2186.52	-2236.47	-306.18	3188195.22	1282648.91	40.1073036	-104.8271776	0.00	
5323.50†	44.336	187.796	4534.78	-2254.21	-2305.71	-315.66	3188185.74	1282579.67	40.1071137	-104.8272134	0.00	
5423.50†	44.336	187.796	4606.31	-2321.91	-2374.95	-325.14	3188176.26	1282510.44	40.1069238	-104.8272491	0.00	
5523.50†	44.336	187.796	4677.83	-2389.60	-2444.19	-334.61	3188166.78	1282441.20	40.1067340	-104.8272849	0.00	
5623.50†	44.336	187.796	4749.36	-2457.29	-2513.43	-344.09	3188157.31	1282371.96	40.1065441	-104.8273207	0.00	
5723.50†	44.336	187.796	4820.88	-2524.99	-2582.67	-353.57	3188147.83	1282302.72	40.1063542	-104.8273564	0.00	
5823.50†	44.336	187.796	4892.41	-2592.68	-2651.92	-363.05	3188138.35	1282233.48	40.1061644	-104.8273922	0.00	
5923.50†	44.336	187.796	4963.93	-2660.38	-2721.16	-372.53	3188128.87	1282164.25	40.1059745	-104.8274280	0.00	
6023.50†	44.336	187.796	5035.46	-2728.07	-2790.40	-382.01	3188119.39	1282095.01	40.1057846	-104.8274637	0.00	
6123.50†	44.336	187.796	5106.98	-2795.77	-2859.64	-391.49	3188109.91	1282025.77	40.1055948	-104.8274995	0.00	
6223.50†	44.336	187.796	5178.51	-2863.46	-2928.88	-400.97	3188100.43	1281956.53	40.1054049	-104.8275352	0.00	
6323.50†	44.336	187.796	5250.03	-2931.16	-2998.12	-410.45	3188090.95	1281887.29	40.1052150	-104.8275710	0.00	
6423.50†	44.336	187.796	5321.56	-2998.85	-3067.36	-419.93	3188081.47	1281818.05	40.1050252	-104.8276068	0.00	
6523.50†	44.336	187.796	5393.08	-3066.54	-3136.60	-429.41	3188072.00	1281748.82	40.1048353	-104.8276425	0.00	
6623.50†	44.336	187.796	5464.61	-3134.24	-3205.84	-438.89	3188062.52	1281679.58	40.1046454	-104.8276783	0.00	
6723.50†	44.336	187.796	5536.13	-3201.93	-3275.08	-448.37	3188053.04	1281610.34	40.1044556	-104.8277141	0.00	
6823.50†	44.336	187.796	5607.66	-3269.63	-3344.33	-457.85	3188043.56	1281541.10	40.1042657	-104.8277498	0.00	
6923.50†	44.336	187.796	5679.18	-3337.32	-3413.57	-467.33	3188034.08	1281471.86	40.1040758	-104.8277856	0.00	
7023.50†	44.336	187.796	5750.71	-3405.02	-3482.81	-476.80	3188024.60	1281402.63	40.1038860	-104.8278213	0.00	
7123.50†	44.336	187.796	5822.23	-3472.71	-3552.05	-486.28	3188015.12	1281333.39	40.1036961	-104.8278571	0.00	
7223.50†	44.336	187.796	5893.76	-3540.41	-3621.29	-495.76	3188005.64	1281264.15	40.1035062	-104.8278929	0.00	
7323.50†	44.336	187.796	5965.28	-3608.10	-3690.53	-505.24	3187996.16	1281194.91	40.1033164	-104.8279286	0.00	
7423.50†	44.336	187.796	6036.81	-3675.79	-3759.77	-514.72	3187986.68	1281125.67	40.1031265	-104.8279644	0.00	
7523.50†	44.336	187.796	6108.33	-3743.49	-3829.01	-524.20	3187977.21	1281056.44	40.1029366	-104.8280002	0.00	
7623.50†	44.336	187.796	6179.86	-3811.18	-3898.25	-533.68	3187967.73	1280987.20	40.1027468	-104.8280359	0.00	
7723.50†	44.336	187.796	6251.38	-3878.88	-3967.49	-543.16	3187958.25	1280917.96	40.1025569	-104.8280717	0.00	
7823.50†	44.336	187.796	6322.91	-3946.57	-4036.74	-552.64	3187948.77	1280848.72	40.1023670	-104.8281074	0.00	
7923.50†	44.336	187.796	6394.43	-4014.27	-4105.98	-562.12	3187939.29	1280779.48	40.1021772	-104.8281432	0.00	
8023.50†	44.336	187.796	6465.96	-4081.96	-4175.22	-571.60	3187929.81	1280710.25	40.1019873	-104.8281790	0.00	
8051.84	44.336	187.796	6486.23	-4101.15	-4194.84	-574.28	3187927.12	1280690.62	40.1019335	-104.8281891	0.00	KOP
8123.50†	37.214	189.010	6540.46	-4146.33	-4241.11	-581.08	3187920.33	1280644.35	40.1018066	-104.8282146	10.00	
8223.50†	27.307	191.585	6624.92	-4197.38	-4293.58	-590.45	3187910.96	1280591.89	40.1016628	-104.8282495	10.00	

# Planned Wellpath Report

LG EVERIST 07 PWP Rev-A.0

Page 4 of 8

## REFERENCE WELLPATH IDENTIFICATION

Operator	PETRO OPERATING CO, LLC	Well	LG EVERIST 07
Field	WELD COUNTY (NAD83/GRID)	API/Legal	
Facility	SEC.30-T02N-R66W	Wellbore	LG EVERIST 07 PWB
Slot	SLOT#07 LG EVERIST 07 (1066'FNL & 1120'FWL,SEC.30)		

## WELLPATH DATA (205 stations) † = interpolated, ‡ = extrapolated station

MD [ft]	Inclination [°]	Azimuth [°]	TVD [ft]	Vert Sect [ft]	North [ft]	East [ft]	Grid East [US ft]	Grid North [US ft]	Latitude	Longitude	DLS [°/100ft]	Comments
8323.50†	17.495	196.771	6717.27	-4233.06	-4330.54	-599.42	3187901.99	1280554.93	40.1015615	-104.8282826	10.00	
8423.50†	8.132	213.820	6814.70	-4252.29	-4350.86	-607.71	3187893.70	1280534.61	40.1015059	-104.8283128	10.00	
8523.50†	5.082	309.530	6914.26	-4254.49	-4353.92	-615.08	3187886.33	1280531.55	40.1014977	-104.8283392	10.00	
8623.50†	13.608	346.272	7012.91	-4239.59	-4339.64	-621.31	3187880.11	1280545.83	40.1015370	-104.8283611	10.00	
8723.50†	23.328	353.962	7107.66	-4208.04	-4308.44	-626.19	3187875.22	1280577.03	40.1016227	-104.8283777	10.00	
8823.50†	33.209	357.258	7195.63	-4160.80	-4261.28	-629.59	3187871.82	1280624.19	40.1017523	-104.8283886	10.00	
8923.50†	43.140	359.165	7274.14	-4099.30	-4199.59	-631.41	3187870.01	1280685.88	40.1019217	-104.8283934	10.00	
9023.50†	53.093	0.472	7340.82	-4025.42	-4125.23	-631.58	3187869.84	1280760.23	40.1021258	-104.8283920	10.00	
9123.50†	63.057	1.474	7393.64	-3941.40	-4040.48	-630.10	3187871.32	1280844.98	40.1023584	-104.8283844	10.00	
9223.50†	73.027	2.312	7430.99	-3849.79	-3947.90	-627.01	3187874.40	1280937.55	40.1026124	-104.8283709	10.00	
9323.50†	83.000	3.064	7451.73	-3753.37	-3850.32	-622.42	3187878.99	1281035.13	40.1028802	-104.8283518	10.00	
9397.27	90.357	3.597	7456.00†	-3680.88	-3776.85	-618.14	3187883.27	1281108.60	40.1030818	-104.8283345	10.00	LANDING
9423.50†	90.357	3.597	7455.84	-3655.06	-3750.67	-616.50	3187884.92	1281134.78	40.1031536	-104.8283279	0.00	
9523.50†	90.357	3.597	7455.21	-3556.64	-3650.87	-610.22	3187891.19	1281234.57	40.1034274	-104.8283028	0.00	
9623.50†	90.357	3.597	7454.59	-3458.22	-3551.07	-603.95	3187897.46	1281334.37	40.1037012	-104.8282777	0.00	
9723.50†	90.357	3.597	7453.97	-3359.80	-3451.26	-597.68	3187903.73	1281434.17	40.1039751	-104.8282526	0.00	
9823.50†	90.357	3.597	7453.34	-3261.38	-3351.46	-591.40	3187910.01	1281533.97	40.1042489	-104.8282274	0.00	
9923.50†	90.357	3.597	7452.72	-3162.96	-3251.66	-585.13	3187916.28	1281633.76	40.1045227	-104.8282023	0.00	
10023.50†	90.357	3.597	7452.09	-3064.54	-3151.86	-578.86	3187922.55	1281733.56	40.1047965	-104.8281772	0.00	
10123.50†	90.357	3.597	7451.47	-2966.12	-3052.06	-572.58	3187928.82	1281833.36	40.1050703	-104.8281521	0.00	
10223.50†	90.357	3.597	7450.85	-2867.70	-2952.26	-566.31	3187935.10	1281933.15	40.1053442	-104.8281269	0.00	
10323.50†	90.357	3.597	7450.22	-2769.28	-2852.46	-560.04	3187941.37	1282032.95	40.1056180	-104.8281018	0.00	
10423.50†	90.357	3.597	7449.60	-2670.86	-2752.66	-553.77	3187947.64	1282132.75	40.1058918	-104.8280767	0.00	
10523.50†	90.357	3.597	7448.98	-2572.44	-2652.86	-547.49	3187953.92	1282232.54	40.1061656	-104.8280516	0.00	
10623.50†	90.357	3.597	7448.35	-2474.02	-2553.05	-541.22	3187960.19	1282332.34	40.1064394	-104.8280264	0.00	
10723.50†	90.357	3.597	7447.73	-2375.60	-2453.25	-534.95	3187966.46	1282432.14	40.1067133	-104.8280013	0.00	
10823.50†	90.357	3.597	7447.11	-2277.18	-2353.45	-528.67	3187972.73	1282531.93	40.1069871	-104.8279762	0.00	
10882.07	90.357	3.597	7446.74	-2219.53	-2295.00	-525.00	3187976.41	1282590.38	40.1071475	-104.8279615	0.00	LAT TARGET1
10923.50†	90.358	2.354	7446.48	-2178.68	-2253.63	-522.85	3187978.56	1282631.76	40.1072610	-104.8279526	3.00	
11023.50†	90.358	359.354	7445.86	-2079.54	-2153.65	-521.36	3187980.05	1282731.73	40.1075354	-104.8279446	3.00	
11031.07	90.358	359.126	7445.81	-2072.00	-2146.08	-521.46	3187979.95	1282739.30	40.1075562	-104.8279448	3.00	3D Arc (J)
11123.50†	90.358	359.126	7445.23	-1980.04	-2053.66	-522.87	3187978.54	1282831.71	40.1078099	-104.8279473	0.00	
11223.50†	90.358	359.126	7444.61	-1880.54	-1953.68	-524.39	3187977.01	1282931.69	40.1080844	-104.8279500	0.00	
11323.50†	90.358	359.126	7443.98	-1781.04	-1853.69	-525.92	3187975.49	1283031.67	40.1083588	-104.8279528	0.00	
11423.50†	90.358	359.126	7443.36	-1681.54	-1753.70	-527.44	3187973.96	1283131.66	40.1086333	-104.8279555	0.00	
11523.50†	90.358	359.126	7442.73	-1582.04	-1653.72	-528.97	3187972.44	1283231.64	40.1089078	-104.8279583	0.00	
11623.50†	90.358	359.126	7442.11	-1482.54	-1553.73	-530.49	3187970.92	1283331.62	40.1091823	-104.8279610	0.00	
11723.50†	90.358	359.126	7441.49	-1383.04	-1453.74	-532.02	3187969.39	1283431.60	40.1094568	-104.8279637	0.00	
11823.50†	90.358	359.126	7440.86	-1283.54	-1353.76	-533.54	3187967.87	1283531.59	40.1097313	-104.8279665	0.00	
11923.50†	90.358	359.126	7440.24	-1184.04	-1253.77	-535.07	3187966.34	1283631.57	40.1100058	-104.8279692	0.00	
12023.50†	90.358	359.126	7439.61	-1084.54	-1153.79	-536.59	3187964.82	1283731.55	40.1102803	-104.8279720	0.00	
12123.50†	90.358	359.126	7438.99	-985.04	-1053.80	-538.12	3187963.29	1283831.53	40.1105548	-104.8279747	0.00	
12223.50†	90.358	359.126	7438.36	-885.54	-953.81	-539.64	3187961.77	1283931.51	40.1108293	-104.8279775	0.00	
12323.50†	90.358	359.126	7437.74	-786.04	-853.83	-541.16	3187960.24	1284031.50	40.1111038	-104.8279802	0.00	
12423.50†	90.358	359.126	7437.11	-686.54	-753.84	-542.69	3187958.72	1284131.48	40.1113782	-104.8279829	0.00	



# Planned Wellpath Report

LG EVERIST 07 PWP Rev-A.0

Page 5 of 8

## REFERENCE WELLPATH IDENTIFICATION

Operator	PETRO OPERATING CO, LLC	Well	LG EVERIST 07
Field	WELD COUNTY (NAD83/GRID)	API/Legal	
Facility	SEC.30-T02N-R66W	Wellbore	LG EVERIST 07 PWB
Slot	SLOT#07 LG EVERIST 07 (1066'FNL & 1120'FWL,SEC.30)		

## WELLPATH DATA (205 stations) † = interpolated, ‡ = extrapolated station

MD [ft]	Inclination [°]	Azimuth [°]	TVD [ft]	Vert Sect [ft]	North [ft]	East [ft]	Grid East [US ft]	Grid North [US ft]	Latitude	Longitude	DLS [°/100ft]	Comments
12523.50†	90.358	359.126	7436.49	-587.04	-653.85	-544.21	3187957.19	1284231.46	40.1116527	-104.8279857	0.00	
12623.50†	90.358	359.126	7435.87	-487.54	-553.87	-545.74	3187955.67	1284331.44	40.1119272	-104.8279884	0.00	
12723.50†	90.358	359.126	7435.24	-388.04	-453.88	-547.26	3187954.15	1284431.43	40.1122017	-104.8279912	0.00	
12823.50†	90.358	359.126	7434.62	-288.54	-353.89	-548.79	3187952.62	1284531.41	40.1124762	-104.8279939	0.00	
12923.50†	90.358	359.126	7433.99	-189.04	-253.91	-550.31	3187951.10	1284631.39	40.1127507	-104.8279966	0.00	
13023.50†	90.358	359.126	7433.37	-89.54	-153.92	-551.84	3187949.57	1284731.37	40.1130252	-104.8279994	0.00	
13123.50†	90.358	359.126	7432.74	9.96	-53.93	-553.36	3187948.05	1284831.35	40.1132997	-104.8280021	0.00	
13223.50†	90.358	359.126	7432.12	109.47	46.05	-554.89	3187946.52	1284931.34	40.1135742	-104.8280049	0.00	
13323.50†	90.358	359.126	7431.49	208.97	146.04	-556.41	3187945.00	1285031.32	40.1138487	-104.8280076	0.00	
13423.50†	90.358	359.126	7430.87	308.47	246.02	-557.93	3187943.47	1285131.30	40.1141231	-104.8280103	0.00	
13523.50†	90.358	359.126	7430.25	407.97	346.01	-559.46	3187941.95	1285231.28	40.1143976	-104.8280131	0.00	
13623.50†	90.358	359.126	7429.62	507.47	446.00	-560.98	3187940.43	1285331.27	40.1146721	-104.8280158	0.00	
13723.50†	90.358	359.126	7429.00	606.97	545.98	-562.51	3187938.90	1285431.25	40.1149466	-104.8280186	0.00	
13823.50†	90.358	359.126	7428.37	706.47	645.97	-564.03	3187937.38	1285531.23	40.1152211	-104.8280213	0.00	
13923.50†	90.358	359.126	7427.75	805.97	745.96	-565.56	3187935.85	1285631.21	40.1154956	-104.8280241	0.00	
14023.50†	90.358	359.126	7427.12	905.47	845.94	-567.08	3187934.33	1285731.19	40.1157701	-104.8280268	0.00	
14123.50†	90.358	359.126	7426.50	1004.97	945.93	-568.61	3187932.80	1285831.18	40.1160446	-104.8280295	0.00	
14223.50†	90.358	359.126	7425.87	1104.47	1045.92	-570.13	3187931.28	1285931.16	40.1163191	-104.8280323	0.00	
14323.50†	90.358	359.126	7425.25	1203.97	1145.90	-571.66	3187929.75	1286031.14	40.1165936	-104.8280350	0.00	
14423.50†	90.358	359.126	7424.63	1303.47	1245.89	-573.18	3187928.23	1286131.12	40.1168680	-104.8280378	0.00	
14523.50†	90.358	359.126	7424.00	1402.97	1345.87	-574.71	3187926.70	1286231.10	40.1171425	-104.8280405	0.00	
14623.50†	90.358	359.126	7423.38	1502.47	1445.86	-576.23	3187925.18	1286331.09	40.1174170	-104.8280432	0.00	
14723.50†	90.358	359.126	7422.75	1601.97	1545.85	-577.75	3187923.66	1286431.07	40.1176915	-104.8280460	0.00	
14823.50†	90.358	359.126	7422.13	1701.47	1645.83	-579.28	3187922.13	1286531.05	40.1179660	-104.8280487	0.00	
14923.50†	90.358	359.126	7421.50	1800.97	1745.82	-580.80	3187920.61	1286631.03	40.1182405	-104.8280515	0.00	
15023.50†	90.358	359.126	7420.88	1900.47	1845.81	-582.33	3187919.08	1286731.02	40.1185150	-104.8280542	0.00	
15123.50†	90.358	359.126	7420.25	1999.97	1945.79	-583.85	3187917.56	1286831.00	40.1187895	-104.8280570	0.00	
15223.50†	90.358	359.126	7419.63	2099.47	2045.78	-585.38	3187916.03	1286930.98	40.1190640	-104.8280597	0.00	
15323.50†	90.358	359.126	7419.01	2198.97	2145.77	-586.90	3187914.51	1287030.96	40.1193385	-104.8280624	0.00	
15423.50†	90.358	359.126	7418.38	2298.47	2245.75	-588.43	3187912.98	1287130.94	40.1196129	-104.8280652	0.00	
15523.50†	90.358	359.126	7417.76	2397.97	2345.74	-589.95	3187911.46	1287230.93	40.1198874	-104.8280679	0.00	
15623.50†	90.358	359.126	7417.13	2497.47	2445.73	-591.48	3187909.94	1287330.91	40.1201619	-104.8280707	0.00	
15723.50†	90.358	359.126	7416.51	2596.97	2545.71	-593.00	3187908.41	1287430.89	40.1204364	-104.8280734	0.00	
15823.50†	90.358	359.126	7415.88	2696.47	2645.70	-594.52	3187906.89	1287530.87	40.1207109	-104.8280762	0.00	
15923.50†	90.358	359.126	7415.26	2795.97	2745.68	-596.05	3187905.36	1287630.86	40.1209854	-104.8280789	0.00	
16023.50†	90.358	359.126	7414.63	2895.47	2845.67	-597.57	3187903.84	1287730.84	40.1212599	-104.8280816	0.00	
16123.50†	90.358	359.126	7414.01	2994.97	2945.66	-599.10	3187902.31	1287830.82	40.1215344	-104.8280844	0.00	
16182.66	90.358	359.126	7413.64	3053.83	3004.81	-600.00	3187901.41	1287889.97	40.1216968	-104.8280860	0.00	LAT TARGET2
16223.50†	90.358	357.901	7413.38	3094.51	3045.63	-601.06	3187900.35	1287930.79	40.1218088	-104.8280887	3.00	
16269.01	90.357	356.536	7413.10	3139.91	3091.09	-603.27	3187898.14	1287976.24	40.1219337	-104.8280953	3.00	3D Arc (J)
16323.50†	90.357	356.536	7412.76	3194.32	3145.48	-606.56	3187894.85	1288030.63	40.1220830	-104.8281056	0.00	
16423.50†	90.357	356.536	7412.14	3294.17	3245.29	-612.60	3187888.81	1288130.44	40.1223571	-104.8281245	0.00	
16523.50†	90.357	356.536	7411.51	3394.02	3345.11	-618.64	3187882.77	1288230.25	40.1226313	-104.8281434	0.00	
16623.50†	90.357	356.536	7410.89	3493.87	3444.92	-624.69	3187876.73	1288330.07	40.1229054	-104.8281623	0.00	
16723.50†	90.357	356.536	7410.27	3593.72	3544.74	-630.73	3187870.68	1288429.88	40.1231795	-104.8281812	0.00	

# Planned Wellpath Report

LG EVERIST 07 PWP Rev-A.0

Page 6 of 8

## REFERENCE WELLPATH IDENTIFICATION

Operator	PETRO OPERATING CO, LLC	Well	LG EVERIST 07
Field	WELD COUNTY (NAD83/GRID)	API/Legal	
Facility	SEC.30-T02N-R66W	Wellbore	LG EVERIST 07 PWB
Slot	SLOT#07 LG EVERIST 07 (1066'FNL & 1120'FWL,SEC.30)		

## WELLPATH DATA (205 stations) † = interpolated, ‡ = extrapolated station

MD [ft]	Inclination [°]	Azimuth [°]	TVD [ft]	Vert Sect [ft]	North [ft]	East [ft]	Grid East [US ft]	Grid North [US ft]	Latitude	Longitude	DLS [°/100ft]	Comments
16823.50†	90.357	356.536	7409.64	3693.57	3644.56	-636.77	3187864.64	1288529.69	40.1234536	-104.8282001	0.00	
16923.50†	90.357	356.536	7409.02	3793.42	3744.37	-642.81	3187858.60	1288629.50	40.1237277	-104.8282190	0.00	
17023.50†	90.357	356.536	7408.39	3893.27	3844.19	-648.85	3187852.56	1288729.31	40.1240018	-104.8282379	0.00	
17123.50†	90.357	356.536	7407.77	3993.11	3944.00	-654.90	3187846.52	1288829.12	40.1242759	-104.8282568	0.00	
17223.50†	90.357	356.536	7407.15	4092.96	4043.82	-660.94	3187840.48	1288928.93	40.1245501	-104.8282757	0.00	
17274.18	90.357	356.536	7406.83	4143.56	4094.40	-664.00	3187837.41	1288979.51	40.1246890	-104.8282853	0.00	LAT TARGET3
17323.50†	90.358	358.016	7406.52	4192.77	4143.66	-666.34	3187835.07	1289028.78	40.1248242	-104.8282924	3.00	
17382.22	90.358	359.777	7406.16	4251.22	4202.37	-667.47	3187833.94	1289087.48	40.1249854	-104.8282948	3.00	3D Arc (J)
17423.50†	90.358	359.777	7405.90	4292.24	4243.65	-667.64	3187833.78	1289128.76	40.1250987	-104.8282943	0.00	
17523.50†	90.358	359.777	7405.27	4391.62	4343.65	-668.02	3187833.39	1289228.75	40.1253732	-104.8282930	0.00	
17623.50†	90.358	359.777	7404.65	4491.00	4443.64	-668.41	3187833.00	1289328.74	40.1256477	-104.8282916	0.00	
17723.50†	90.358	359.777	7404.02	4590.38	4543.64	-668.80	3187832.61	1289428.74	40.1259222	-104.8282903	0.00	
17823.50†	90.358	359.777	7403.40	4689.76	4643.64	-669.19	3187832.22	1289528.73	40.1261967	-104.8282890	0.00	
17923.50†	90.358	359.777	7402.78	4789.15	4743.64	-669.58	3187831.83	1289628.72	40.1264712	-104.8282877	0.00	
18023.50†	90.358	359.777	7402.15	4888.53	4843.63	-669.97	3187831.45	1289728.72	40.1267457	-104.8282864	0.00	
18123.50†	90.358	359.777	7401.53	4987.91	4943.63	-670.36	3187831.06	1289828.71	40.1270202	-104.8282851	0.00	
18223.50†	90.358	359.777	7400.90	5087.29	5043.63	-670.75	3187830.67	1289928.70	40.1272947	-104.8282837	0.00	
18323.50†	90.358	359.777	7400.28	5186.67	5143.63	-671.13	3187830.28	1290028.69	40.1275692	-104.8282824	0.00	
18423.50†	90.358	359.777	7399.65	5286.05	5243.62	-671.52	3187829.89	1290128.69	40.1278437	-104.8282811	0.00	
18523.50†	90.358	359.777	7399.03	5385.43	5343.62	-671.91	3187829.50	1290228.68	40.1281182	-104.8282798	0.00	
18623.50†	90.358	359.777	7398.41	5484.81	5443.62	-672.30	3187829.11	1290328.67	40.1283927	-104.8282785	0.00	
18723.50†	90.358	359.777	7397.78	5584.19	5543.61	-672.69	3187828.72	1290428.67	40.1286672	-104.8282771	0.00	
18823.50†	90.358	359.777	7397.16	5683.57	5643.61	-673.08	3187828.34	1290528.66	40.1289417	-104.8282758	0.00	
18923.50†	90.358	359.777	7396.53	5782.95	5743.61	-673.47	3187827.95	1290628.65	40.1292162	-104.8282745	0.00	
19008.80	90.358	359.777	7396.00‡	5867.72	5828.91	-673.80	3187827.62	1290713.95	40.1294503	-104.8282734	0.00	TD

## HOLE & CASING SECTIONS

- Ref Wellbore: LG EVERIST 07 PWB      Ref Wellpath: LG EVERIST 07 PWP Rev-A.0

String/Diameter	Start MD [ft]	End MD [ft]	Interval [ft]	Start TVD [ft]	End TVD [ft]	Start N/S [ft]	Start E/W [ft]	End N/S [ft]	End E/W [ft]
9.625in Casing Surface	23.50	1835.95	1812.45	23.50	1810.00	0.00	0.00	-227.73	-31.18

# Planned Wellpath Report

LG EVERIST 07 PWP Rev-A.0

Page 7 of 8

## REFERENCE WELLPATH IDENTIFICATION

Operator	PETRO OPERATING CO, LLC	Well	LG EVERIST 07
Field	WELD COUNTY (NAD83/GRID)	API/Legal	
Facility	SEC.30-T02N-R66W	Wellbore	LG EVERIST 07 PWB
Slot	SLOT#07 LG EVERIST 07 (1066'FNL & 1120'FWL,SEC.30)		

## TARGETS

Name	MD [ft]	TVD [ft]	North [ft]	East [ft]	Grid East [US ft]	Grid North [US ft]	Latitude	Longitude	Shape
SEC.19-T02N-R66W	N/A	0.00	-78.28	44.42	3188545.81	1284807.01	40.1132204	-104.8258656	polygon
2D Polygon: dimensions not calculated									
SEC.19/30-T02N-R66W (SB 460')	N/A	0.00	-78.28	44.42	3188545.81	1284807.01	40.1132204	-104.8258656	polygon
2D Polygon: dimensions not calculated									
SEC.30-T02N-R66W	N/A	0.00	-78.28	44.42	3188545.81	1284807.01	40.1132204	-104.8258656	polygon
2D Polygon: dimensions not calculated									
2) LG EVERIST 07 BHL REV-1 (459'FNL & 462'FWL,SEC.19)	19008.80	7396.00	5828.91	-673.80	3187827.62	1290713.95	40.1294503	-104.8282734	point
1) LG EVERIST 07 LP REV-1 (463'FSL & 464'FWL,SEC.30)	9397.27	7456.00	-3776.85	-618.14	3187883.27	1281108.60	40.1030818	-104.8283345	point

## SURVEY PROGRAM - Ref Wellbore: LG EVERIST 07 PWB Ref Wellpath: LG EVERIST 07 PWP Rev-A.0

Start MD [ft]	End MD [ft]	Positional Uncertainty Model	Log Name/Comment	Wellbore
23.50	1835.95	BH NaviTrak (2019) (Axial+IFR1+SAG)		LG EVERIST 07 PWB
1835.95	19008.80	BH AutoTrak Curve/eXpress (2019) (IFR1, SAG, Short spacing)		LG EVERIST 07 PWB



# Planned Wellpath Report

LG EVERIST 07 PWP Rev-A.0

Page 8 of 8

## REFERENCE WELLPATH IDENTIFICATION

Operator	PETRO OPERATING CO, LLC	Well	LG EVERIST 07
Field	WELD COUNTY (NAD83/GRID)	API/Legal	
Facility	SEC.30-T02N-R66W	Wellbore	LG EVERIST 07 PWB
Slot	SLOT#07 LG EVERIST 07 (1066'FNL & 1120'FWL,SEC.30)		

## DESIGN COMMENTS

MD [ft]	Inclination [°]	Azimuth [°]	TVD [ft]	Comment
23.50	0.000	187.795	23.50	Tie On
575.00	0.000	187.795	575.00	End of Tangent
1325.00	15.000	187.795	1316.46	End of Build (J)
1835.95	15.000	187.795	1810.00	End of Tangent (J)
1910.95	15.000	187.795	1882.44	End of Tangent
3377.76	44.336	187.796	3143.09	Build (XS)
8051.84	44.336	187.796	6486.23	KOP
9397.27	90.357	3.597	7456.00	LANDING
10882.07	90.357	3.597	7446.74	LAT TARGET1
11031.07	90.358	359.126	7445.81	3D Arc (J)
16182.66	90.358	359.126	7413.64	LAT TARGET2
16269.01	90.357	356.536	7413.10	3D Arc (J)
17274.18	90.357	356.536	7406.83	LAT TARGET3
17382.22	90.358	359.777	7406.16	3D Arc (J)
19008.80	90.358	359.777	7396.00	TD