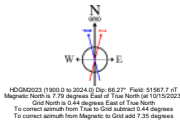


PETRO OPERATING CO, LLC



Location:	COLORADO	Slot:	SLOT#06 LG EVERIST 06 (1079°FNL & 1127°FWL,SEC.30)
Field:	WELD COUNTY (NAD83/GRID)	Well:	LG EVERIST 06
Facility:	SEC.30-T02N-R66W	Wellbore:	LG EVERIST 06 PWB
Plot reference wellpath is LG EVERIST 06 PWP Rev-A.0		Grid System: NAD83 / Lambert Colorado SP, Northern Zone (501), US feet	
True vertical depths are referenced to Ensign 140 (23.5') (RKB)		North Reference: Grid north	
Reference wellpath measured depths are referenced to Ensign 140 (23.5') (RKB)		Scale: True distance	
Ensign 140 (23.5') (RKB) to Mean Sea Level: 4897.5 feet		Coordinates are in feet referenced to Slot	
Mean Sea Level to Ground level (At Slot: SLOT#06 LG EVERIST 06 (1079°FNL & 1127°FWL,SEC.30)):- 4874 feet		Depths are in feet	
Offset wellpath MDs are referenced to each path's default MD datum		Created by: painsetr on 2023-10-15; Database: WellArchitectDB	

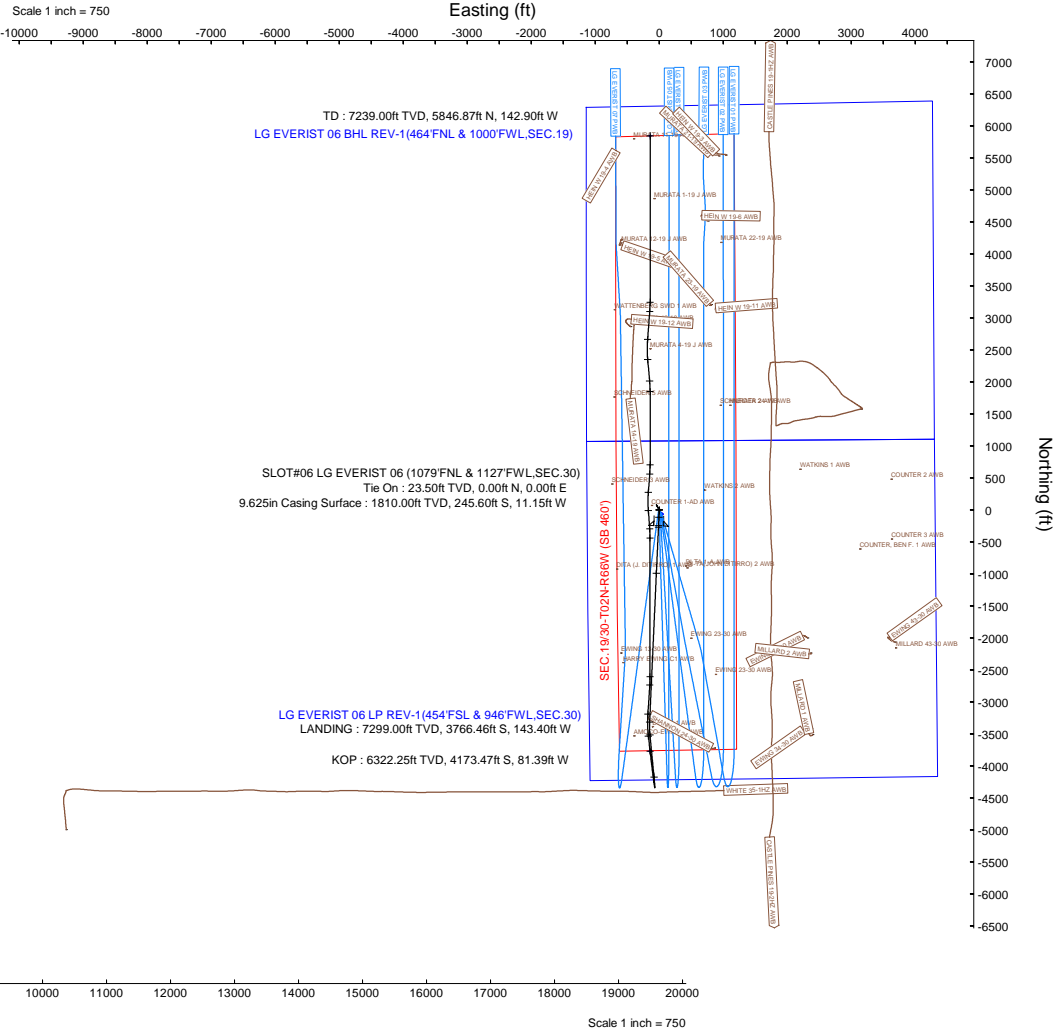
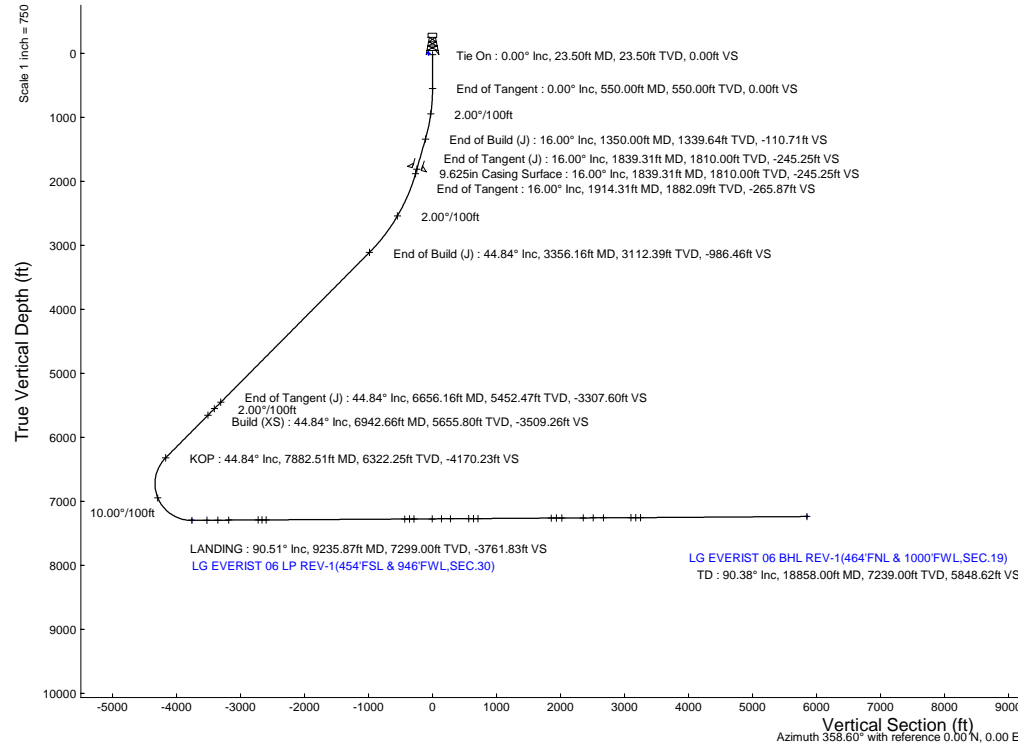
Well Profile Data							
Design Comment	MD (ft)	Inc (")	Az (")	TVD (ft)	Local N (ft)	Local E (ft)	DLS (°/100ft)
Tie On	23.50	0.000	182.600	23.50	0.00	0.00	0.00
End of Tangent	550.00	0.000	182.600	550.00	0.00	0.00	0.00
End of Build (J)	1350.00	16.000	182.600	1339.64	-110.86	-5.03	2.00
End of Tangent (J)	1839.31	16.000	182.600	1810.00	-245.60	-11.15	0.00
End of Tangent	1914.31	16.000	182.600	1882.09	-266.25	-12.09	0.00
End of Build (J)	3356.16	44.837	182.600	3112.39	-987.85	-44.86	2.00
End of Tangent (J)	6656.16	44.837	182.600	5452.47	-3312.26	-150.41	0.00
Build (XS)	6942.66	44.838	174.470	5655.80	-3513.86	-145.25	2.00
KOP	7882.51	44.838	174.470	6322.25	-4173.47	-81.39	0.00
LANDNG	9235.87	90.506	353.546	7299.00	-3766.46	-143.40	10.00
LAT TARGET1	9472.50	90.506	353.546	7296.91	-3531.34	-170.00	0.00
3D Arc (J)	9814.16	90.259	3.793	7294.62	-3190.23	-177.92	3.00
LAT TARGET2	10274.04	90.259	3.793	7292.54	-2731.36	-147.50	0.00
3D Arc (J)	10400.43	90.358	0.003	7291.86	-2605.07	-143.32	3.00
LAT TARGET3	12569.21	90.358	0.003	7278.30	-436.33	-143.21	0.00
3D Arc (J)	12713.55	90.432	355.673	7277.30	-292.13	-148.65	3.00
LAT TARGET4	12996.49	90.432	355.673	7275.17	-10.00	-170.00	0.00
3D Arc (J)	13284.02	90.272	4.298	7273.40	277.25	-170.07	3.00
LAT TARGET5	13571.23	90.272	4.298	7272.04	563.65	-148.55	0.00
3D Arc (J)	13714.43	90.392	0.003	7271.21	706.71	-143.18	3.00
LAT TARGET6	14857.75	90.392	0.003	7263.38	1850.00	-143.11	0.00
3D Arc (J)	15027.10	90.352	354.923	7262.28	2019.13	-150.60	3.00
LAT TARGET7	15359.28	90.352	354.923	7260.24	2350.00	-180.00	0.00
3D Arc (J)	15674.51	90.209	4.379	7258.69	2664.86	-181.92	3.00
LAT TARGET8	16110.92	90.209	4.379	7257.10	3100.00	-148.60	0.00
3D Arc (J)	16256.90	90.382	0.003	7256.35	3245.83	-143.02	3.00
TD	18858.00	90.382	0.003	7239.00	5846.87	-142.90	0.00

Location Information				
Facility Name	Grid East (US ft)	Grid North (US ft)	Latitude	Longitude
SEC.30-T02N-R66W	3188545.810	1284807.010	40°06'47.5934"N	104°49'33.1162"W
Slot	Local N (ft)	Local E (ft)	Grid East (US ft)	Grid North (US ft)
SLOT#06 LG EVERIST 06 (1079°FNL & 1127°FWL,SEC.30)	65.26	-37.02	3188508.787	1284872.269
Ensign 140 (23.5') (RKB) to Ground level (At Slot: SLOT#06 LG EVERIST 06 (1079°FNL & 1127°FWL,SEC.30))				23.5ft
Mean Sea Level to Ground level (At Slot: SLOT#06 LG EVERIST 06 (1079°FNL & 1127°FWL,SEC.30))				-4874ft
Ensign 140 (23.5') (RKB) to Mean Sea Level				4897.5ft

Survey Program					
Start MD (ft)	End MD (ft)	Tool	Model	Log Name/Comment	Wellbore
23.50	1839.31	BH NavTrak (2019)	BH NavTrak (2019) (Axial+IFR1+SAG)		LG EVERIST 06 PWB
1839.31	18858.00	BH AutoTrak Curve/xpress (2019)	BH AutoTrak Curve/xpress (2019) (IFR1, SAG, Short spacing)		LG EVERIST 06 PWB

Bottom Hole Location							
MD (ft)	Inc (")	Az (")	TVD (ft)	Local N (ft)	Local E (ft)	Grid East (US ft)	Grid North (US ft)
18858.00	90.382	0.003	7239.00	5846.87	-142.90	3188365.90	1290718.89
						40°07'46.0296"N	104°49'34.8538"W

Targets							
Name	MD (ft)	TVD (ft)	Local N (ft)	Local E (ft)	Grid East (US ft)	Grid North (US ft)	Latitude
SEC.19-T02N-R66W	N/A	0.00	-65.26	37.02	3188545.81	1284807.01	40°06'47.5934"N
SEC.19/30-T02N-R66W (SB 460)	N/A	0.00	-65.26	37.02	3188545.81	1284807.01	40°06'47.5934"N
SEC.30-T02N-R66W	N/A	0.00	-65.26	37.02	3188545.81	1284807.01	40°06'47.5934"N
LG EVERIST 06 BHL REV-1(464°FNL & 1000°FWL,SEC.19)	18858.00	7239.00	5846.87	-142.90	3188365.90	1290718.89	40°07'46.0296"N
LG EVERIST 06 LP REV-1(454°FNL & 946°FWL,SEC.30)	9235.87	7299.00	-3766.46	-143.40	3188365.39	1281105.97	40°06'11.0323"N



Planned Wellpath Report

LG EVERIST 06 PWP Rev-A.0

Page 1 of 8

REFERENCE WELLPATH IDENTIFICATION			
Operator	PETRO OPERATING CO, LLC	Well	LG EVERIST 06
Field	WELD COUNTY (NAD83/GRID)	API/Legal	
Facility	SEC.30-T02N-R66W	Wellbore	LG EVERIST 06 PWB
Slot	SLOT#06 LG EVERIST 06 (1079'FNL & 1127'FWL,SEC.30)		

REPORT SETUP INFORMATION			
Projection System	NAD83 / Lambert Colorado SP, Northern Zone (501), US feet	Software System	WellArchitect® 6.0
North Reference	Grid	User	Painsetr
Scale	0.999960	Report Generated	10/15/2023 at 2:18:43 PM
Convergence at slot	0.44° East	Database	WellArchitectDB

WELLPATH LOCATION						
	Local coordinates		Grid coordinates		Geographic coordinates	
	North[ft]	East[ft]	Easting[US ft]	Northing[US ft]	Latitude	Longitude
Slot Location	65.26	-37.02	3188508.79	1284872.27	40.1134003°	-104.8259962°
Facility Reference Pt			3188545.81	1284807.01	40.1132204°	-104.8258656°
Field Reference Pt			3188545.81	1284807.01	40.1132204°	-104.8258656°

WELLPATH DATUM			
Calculation method	Minimum curvature	Ensign 140 (23.5') (RKB) to Facility Vertical Datum	4897.50ft
Horizontal Reference Pt	Slot	Ensign 140 (23.5') (RKB) to Mean Sea Level	4897.50ft
Vertical Reference Pt	Ensign 140 (23.5') (RKB)	Ensign 140 (23.5') (RKB) to Ground Level at Slot (SLOT#06 LG EVERIST 06 (1079'FNL & 1127'FWL,SEC.30))	23.50ft
MD Reference Pt	Ensign 140 (23.5') (RKB)	Section Origin	N 0.00, E 0.00 ft
Field Vertical Reference	Mean Sea Level	Section Azimuth	358.60°

Planned Wellpath Report

LG EVERIST 06 PWP Rev-A.0

Page 2 of 8

REFERENCE WELLPATH IDENTIFICATION			
Operator	PETRO OPERATING CO, LLC	Well	LG EVERIST 06
Field	WELD COUNTY (NAD83/GRID)	API/Legal	
Facility	SEC.30-T02N-R66W	Wellbore	LG EVERIST 06 PWB
Slot	SLOT#06 LG EVERIST 06 (1079'FNL & 1127'FWL,SEC.30)		

WELLPATH DATA (216 stations) † = interpolated, ‡ = extrapolated station												
MD [ft]	Inclination [°]	Azimuth [°]	TVD [ft]	Vert Sect [ft]	North [ft]	East [ft]	Grid East [US ft]	Grid North [US ft]	Latitude	Longitude	DLS [°/100ft]	Comments
0.00†	0.000	182.600	0.00	0.00	0.00	0.00	3188508.79	1284872.27	40.1134003	-104.8259962	0.00	
23.50	0.000	182.600	23.50	0.00	0.00	0.00	3188508.79	1284872.27	40.1134003	-104.8259962	0.00	Tie On
123.50†	0.000	182.600	123.50	0.00	0.00	0.00	3188508.79	1284872.27	40.1134003	-104.8259962	0.00	
223.50†	0.000	182.600	223.50	0.00	0.00	0.00	3188508.79	1284872.27	40.1134003	-104.8259962	0.00	
323.50†	0.000	182.600	323.50	0.00	0.00	0.00	3188508.79	1284872.27	40.1134003	-104.8259962	0.00	
423.50†	0.000	182.600	423.50	0.00	0.00	0.00	3188508.79	1284872.27	40.1134003	-104.8259962	0.00	
523.50†	0.000	182.600	523.50	0.00	0.00	0.00	3188508.79	1284872.27	40.1134003	-104.8259962	0.00	
550.00	0.000	182.600	550.00	0.00	0.00	0.00	3188508.79	1284872.27	40.1134003	-104.8259962	0.00	End of Tangent
623.50†	1.470	182.600	623.49	-0.94	-0.94	-0.04	3188508.74	1284871.33	40.1133977	-104.8259964	2.00	
723.50†	3.470	182.600	723.39	-5.24	-5.25	-0.24	3188508.55	1284867.02	40.1133859	-104.8259972	2.00	
823.50†	5.470	182.600	823.08	-13.01	-13.03	-0.59	3188508.20	1284859.24	40.1133645	-104.8259987	2.00	
923.50†	7.470	182.600	922.44	-24.25	-24.29	-1.10	3188507.68	1284847.98	40.1133337	-104.8260008	2.00	
1023.50†	9.470	182.600	1021.35	-38.95	-39.00	-1.77	3188507.02	1284833.27	40.1132933	-104.8260036	2.00	
1123.50†	11.470	182.600	1119.68	-57.07	-57.15	-2.60	3188506.19	1284815.12	40.1132435	-104.8260070	2.00	
1223.50†	13.470	182.600	1217.31	-78.61	-78.72	-3.57	3188505.21	1284793.55	40.1131843	-104.8260111	2.00	
1323.50†	15.470	182.600	1314.14	-103.54	-103.68	-4.71	3188504.08	1284768.59	40.1131158	-104.8260158	2.00	
1350.00	16.000	182.600	1339.64	-110.71	-110.86	-5.03	3188503.75	1284761.41	40.1130961	-104.8260172	2.00	End of Build (J)
1423.50†	16.000	182.600	1410.30	-130.92	-131.10	-5.95	3188502.83	1284741.17	40.1130406	-104.8260210	0.00	
1523.50†	16.000	182.600	1506.42	-158.41	-158.64	-7.20	3188501.58	1284713.64	40.1129650	-104.8260263	0.00	
1623.50†	16.000	182.600	1602.55	-185.91	-186.17	-8.45	3188500.33	1284686.10	40.1128894	-104.8260315	0.00	
1723.50†	16.000	182.600	1698.67	-213.41	-213.71	-9.70	3188499.08	1284658.57	40.1128139	-104.8260367	0.00	
1823.50†	16.000	182.600	1794.80	-240.90	-241.24	-10.95	3188497.83	1284631.04	40.1127383	-104.8260419	0.00	
1839.31	16.000	182.600	1810.00	-245.25	-245.60	-11.15	3188497.64	1284626.68	40.1127264	-104.8260427	0.00	End of Tangent (J)
1914.31	16.000	182.600	1882.09	-265.87	-266.25	-12.09	3188496.70	1284606.03	40.1126697	-104.8260467	0.00	End of Tangent
1923.50†	16.184	182.600	1890.92	-268.41	-268.79	-12.21	3188496.58	1284603.49	40.1126627	-104.8260471	2.00	
2023.50†	18.184	182.600	1986.45	-297.88	-298.30	-13.55	3188495.24	1284573.98	40.1125818	-104.8260527	2.00	
2123.50†	20.184	182.600	2080.90	-330.66	-331.13	-15.04	3188493.75	1284541.15	40.1124917	-104.8260589	2.00	
2223.50†	22.184	182.600	2174.13	-366.71	-367.23	-16.68	3188492.11	1284505.06	40.1123926	-104.8260658	2.00	
2323.50†	24.184	182.600	2266.05	-405.98	-406.55	-18.46	3188490.33	1284465.74	40.1122847	-104.8260732	2.00	
2423.50†	26.184	182.600	2356.54	-448.43	-449.06	-20.39	3188488.40	1284423.23	40.1121681	-104.8260813	2.00	
2523.50†	28.184	182.600	2445.49	-494.00	-494.69	-22.46	3188486.32	1284377.60	40.1120429	-104.8260899	2.00	
2623.50†	30.184	182.600	2532.80	-542.64	-543.40	-24.68	3188484.11	1284328.89	40.1119092	-104.8260992	2.00	
2723.50†	32.184	182.600	2618.34	-594.29	-595.12	-27.02	3188481.76	1284277.17	40.1117673	-104.8261090	2.00	
2823.50†	34.184	182.600	2702.03	-648.88	-649.80	-29.51	3188479.28	1284222.50	40.1116173	-104.8261193	2.00	
2923.50†	36.184	182.600	2783.76	-706.36	-707.35	-32.12	3188476.67	1284164.94	40.1114593	-104.8261302	2.00	
3023.50†	38.184	182.600	2863.42	-766.65	-767.73	-34.86	3188473.93	1284104.57	40.1112937	-104.8261417	2.00	
3123.50†	40.184	182.600	2940.93	-829.67	-830.84	-37.73	3188471.06	1284041.46	40.1111205	-104.8261537	2.00	
3223.50†	42.184	182.600	3016.19	-895.35	-896.62	-40.72	3188468.07	1283975.69	40.1109400	-104.8261661	2.00	
3323.50†	44.184	182.600	3089.10	-963.62	-964.98	-43.82	3188464.97	1283907.33	40.1107524	-104.8261791	2.00	
3356.16	44.837	182.600	3112.39	-986.46	-987.85	-44.86	3188463.93	1283884.46	40.1106896	-104.8261834	2.00	End of Build (J)
3423.50†	44.837	182.600	3160.14	-1033.82	-1035.28	-47.01	3188461.78	1283837.03	40.1105595	-104.8261924	0.00	
3523.50†	44.837	182.600	3231.05	-1104.16	-1105.72	-50.21	3188458.58	1283766.60	40.1103662	-104.8262057	0.00	
3623.50†	44.837	182.600	3301.97	-1174.50	-1176.15	-53.41	3188455.38	1283696.16	40.1101729	-104.8262191	0.00	
3723.50†	44.837	182.600	3372.88	-1244.84	-1246.59	-56.61	3188452.18	1283625.73	40.1099796	-104.8262324	0.00	
3823.50†	44.837	182.600	3443.79	-1315.17	-1317.03	-59.81	3188448.98	1283555.30	40.1097864	-104.8262458	0.00	

Planned Wellpath Report

LG EVERIST 06 PWP Rev-A.0

Page 3 of 8

REFERENCE WELLPATH IDENTIFICATION			
Operator	PETRO OPERATING CO, LLC	Well	LG EVERIST 06
Field	WELD COUNTY (NAD83/GRID)	API/Legal	
Facility	SEC.30-T02N-R66W	Wellbore	LG EVERIST 06 PWB
Slot	SLOT#06 LG EVERIST 06 (1079'FNL & 1127'FWL,SEC.30)		

WELLPATH DATA (216 stations) † = interpolated, ‡ = extrapolated station												
MD [ft]	Inclination [°]	Azimuth [°]	TVD [ft]	Vert Sect [ft]	North [ft]	East [ft]	Grid East [US ft]	Grid North [US ft]	Latitude	Longitude	DLS °/100ft	Comments
3923.50†	44.837	182.600	3514.70	-1385.51	-1387.46	-63.00	3188445.79	1283484.86	40.1095931	-104.8262591	0.00	
4023.50†	44.837	182.600	3585.61	-1455.85	-1457.90	-66.20	3188442.59	1283414.43	40.1093998	-104.8262725	0.00	
4123.50†	44.837	182.600	3656.52	-1526.19	-1528.34	-69.40	3188439.39	1283344.00	40.1092065	-104.8262858	0.00	
4223.50†	44.837	182.600	3727.44	-1596.52	-1598.77	-72.60	3188436.19	1283273.56	40.1090133	-104.8262992	0.00	
4323.50†	44.837	182.600	3798.35	-1666.86	-1669.21	-75.80	3188432.99	1283203.13	40.1088200	-104.8263125	0.00	
4423.50†	44.837	182.600	3869.26	-1737.20	-1739.65	-79.00	3188429.79	1283132.70	40.1086267	-104.8263259	0.00	
4523.50†	44.837	182.600	3940.17	-1807.54	-1810.08	-82.20	3188426.60	1283062.26	40.1084334	-104.8263392	0.00	
4623.50†	44.837	182.600	4011.08	-1877.87	-1880.52	-85.39	3188423.40	1282991.83	40.1082401	-104.8263526	0.00	
4723.50†	44.837	182.600	4081.99	-1948.21	-1950.96	-88.59	3188420.20	1282921.39	40.1080469	-104.8263659	0.00	
4823.50†	44.837	182.600	4152.90	-2018.55	-2021.39	-91.79	3188417.00	1282850.96	40.1078536	-104.8263793	0.00	
4923.50†	44.837	182.600	4223.82	-2088.88	-2091.83	-94.99	3188413.80	1282780.53	40.1076603	-104.8263926	0.00	
5023.50†	44.837	182.600	4294.73	-2159.22	-2162.27	-98.19	3188410.60	1282710.09	40.1074670	-104.8264060	0.00	
5123.50†	44.837	182.600	4365.64	-2229.56	-2232.70	-101.39	3188407.41	1282639.66	40.1072737	-104.8264193	0.00	
5223.50†	44.837	182.600	4436.55	-2299.90	-2303.14	-104.58	3188404.21	1282569.23	40.1070805	-104.8264326	0.00	
5323.50†	44.837	182.600	4507.46	-2370.23	-2373.58	-107.78	3188401.01	1282498.79	40.1068872	-104.8264460	0.00	
5423.50†	44.837	182.600	4578.37	-2440.57	-2444.01	-110.98	3188397.81	1282428.36	40.1066939	-104.8264593	0.00	
5523.50†	44.837	182.600	4649.29	-2510.91	-2514.45	-114.18	3188394.61	1282357.93	40.1065006	-104.8264727	0.00	
5623.50†	44.837	182.600	4720.20	-2581.25	-2584.89	-117.38	3188391.41	1282287.49	40.1063073	-104.8264860	0.00	
5723.50†	44.837	182.600	4791.11	-2651.58	-2655.32	-120.58	3188388.22	1282217.06	40.1061141	-104.8264994	0.00	
5823.50†	44.837	182.600	4862.02	-2721.92	-2725.76	-123.78	3188385.02	1282146.62	40.1059208	-104.8265127	0.00	
5923.50†	44.837	182.600	4932.93	-2792.26	-2796.20	-126.97	3188381.82	1282076.19	40.1057275	-104.8265261	0.00	
6023.50†	44.837	182.600	5003.84	-2862.60	-2866.63	-130.17	3188378.62	1282005.76	40.1055342	-104.8265394	0.00	
6123.50†	44.837	182.600	5074.75	-2932.93	-2937.07	-133.37	3188375.42	1281935.32	40.1053410	-104.8265528	0.00	
6223.50†	44.837	182.600	5145.67	-3003.27	-3007.51	-136.57	3188372.22	1281864.89	40.1051477	-104.8265661	0.00	
6323.50†	44.837	182.600	5216.58	-3073.61	-3077.94	-139.77	3188369.02	1281794.46	40.1049544	-104.8265795	0.00	
6423.50†	44.837	182.600	5287.49	-3143.95	-3148.38	-142.97	3188365.83	1281724.02	40.1047611	-104.8265928	0.00	
6523.50†	44.837	182.600	5358.40	-3214.28	-3218.82	-146.17	3188362.63	1281653.59	40.1045678	-104.8266062	0.00	
6623.50†	44.837	182.600	5429.31	-3284.62	-3289.25	-149.36	3188359.43	1281583.16	40.1043746	-104.8266195	0.00	
6656.16	44.837	182.600	5452.47	-3307.60	-3312.26	-150.41	3188358.39	1281560.15	40.1043114	-104.8266239	0.00	End of Tangent (J)
6723.50†	44.785	180.690	5500.25	-3354.98	-3359.69	-151.77	3188357.02	1281512.72	40.1041813	-104.8266300	2.00	
6823.50†	44.767	177.851	5571.24	-3425.40	-3430.11	-150.88	3188357.92	1281442.31	40.1039880	-104.8266287	2.00	
6923.50†	44.820	175.013	5642.21	-3495.79	-3500.41	-146.49	3188362.30	1281372.01	40.1037949	-104.8266150	2.00	
6942.66	44.838	174.470	5655.80	-3509.26	-3513.86	-145.25	3188363.54	1281358.56	40.1037579	-104.8266109	2.00	Build (XS)
7023.50†	44.838	174.470	5713.13	-3566.12	-3570.60	-139.76	3188369.03	1281301.82	40.1036021	-104.8265928	0.00	
7123.50†	44.838	174.470	5784.04	-3636.44	-3640.78	-132.97	3188375.83	1281231.64	40.1034093	-104.8265704	0.00	
7223.50†	44.838	174.470	5854.95	-3706.77	-3710.96	-126.17	3188382.62	1281161.46	40.1032165	-104.8265480	0.00	
7323.50†	44.838	174.470	5925.86	-3777.10	-3781.14	-119.38	3188389.42	1281091.29	40.1030237	-104.8265257	0.00	
7423.50†	44.838	174.470	5996.77	-3847.43	-3851.33	-112.58	3188396.21	1281021.11	40.1028309	-104.8265033	0.00	
7523.50†	44.838	174.470	6067.68	-3917.75	-3921.51	-105.79	3188403.01	1280950.93	40.1026381	-104.8264809	0.00	
7623.50†	44.838	174.470	6138.59	-3988.08	-3991.69	-98.99	3188409.80	1280880.75	40.1024453	-104.8264585	0.00	
7723.50†	44.838	174.470	6209.50	-4058.41	-4061.87	-92.20	3188416.59	1280810.57	40.1022526	-104.8264361	0.00	
7823.50†	44.838	174.470	6280.41	-4128.73	-4132.05	-85.40	3188423.39	1280740.39	40.1020598	-104.8264137	0.00	
7882.51	44.838	174.470	6322.25	-4170.23	-4173.47	-81.39	3188427.40	1280698.98	40.1019460	-104.8264005	0.00	KOP
7923.50†	40.740	174.614	6352.33	-4198.00	-4201.18	-78.74	3188430.05	1280671.27	40.1018699	-104.8263918	10.00	
8023.50†	30.744	175.097	6433.39	-4256.21	-4259.28	-73.48	3188435.31	1280613.17	40.1017103	-104.8263746	10.00	

Planned Wellpath Report

LG EVERIST 06 PWP Rev-A.0

Page 4 of 8

REFERENCE WELLPATH IDENTIFICATION

Operator	PETRO OPERATING CO, LLC	Well	LG EVERIST 06
Field	WELD COUNTY (NAD83/GRID)	API/Legal	
Facility	SEC.30-T02N-R66W	Wellbore	LG EVERIST 06 PWB
Slot	SLOT#06 LG EVERIST 06 (1079'FNL & 1127'FWL,SEC.30)		

WELLPATH DATA (216 stations) † = interpolated, ‡ = extrapolated station

MD [ft]	Inclination [°]	Azimuth [°]	TVD [ft]	Vert Sect [ft]	North [ft]	East [ft]	Grid East [US ft]	Grid North [US ft]	Latitude	Longitude	DLS [°/100ft]	Comments
8123.50†	20.751	175.986	6523.35	-4299.53	-4302.53	-70.05	3188438.74	1280569.92	40.1015915	-104.8263635	10.00	
8223.50†	10.770	178.418	6619.47	-4326.64	-4329.61	-68.55	3188440.24	1280542.84	40.1015171	-104.8263589	10.00	
8323.50†	1.181	225.284	6718.83	-4336.72	-4339.70	-69.02	3188439.77	1280532.75	40.1014894	-104.8263608	10.00	
8423.50†	9.315	347.876	6818.41	-4329.45	-4332.49	-71.46	3188437.33	1280539.96	40.1015093	-104.8263693	10.00	
8523.50†	19.291	350.888	6915.19	-4305.07	-4308.21	-75.79	3188433.00	1280564.24	40.1015760	-104.8263842	10.00	
8623.50†	29.282	351.884	7006.23	-4264.31	-4267.59	-81.87	3188426.92	1280604.86	40.1016877	-104.8264048	10.00	
8723.50†	39.278	352.404	7088.75	-4208.41	-4211.86	-89.53	3188419.26	1280660.59	40.1018408	-104.8264307	10.00	
8823.50†	49.276	352.739	7160.26	-4139.07	-4142.72	-98.52	3188410.27	1280729.73	40.1020308	-104.8264609	10.00	
8923.50†	59.274	352.987	7218.58	-4058.40	-4062.26	-108.59	3188400.21	1280810.18	40.1022518	-104.8264947	10.00	
9023.50†	69.272	353.187	7261.93	-3968.84	-3972.94	-119.41	3188389.38	1280899.49	40.1024972	-104.8265310	10.00	
9123.50†	79.271	353.362	7289.00	-3873.12	-3877.47	-130.66	3188378.13	1280994.96	40.1027595	-104.8265686	10.00	
9223.50†	89.269	353.526	7298.98	-3774.15	-3778.75	-142.01	3188366.78	1281093.68	40.1030308	-104.8266065	10.00	
9235.87	90.506	353.546	7299.00†	-3761.83	-3766.46	-143.40	3188365.39	1281105.97	40.1030645	-104.8266111	10.00	LANDING
9323.50†	90.506	353.546	7298.23	-3674.54	-3679.39	-153.25	3188355.54	1281193.04	40.1033037	-104.8266440	0.00	
9423.50†	90.506	353.546	7297.34	-3574.94	-3580.02	-164.49	3188344.30	1281292.40	40.1035767	-104.8266815	0.00	
9472.50	90.506	353.546	7296.91	-3526.13	-3531.34	-170.00	3188338.79	1281341.08	40.1037105	-104.8266998	0.00	LAT TARGET1
9523.50†	90.470	355.076	7296.48	-3475.27	-3480.59	-175.06	3188333.74	1281391.83	40.1038499	-104.8267165	3.00	
9623.50†	90.399	358.075	7295.72	-3375.35	-3380.78	-181.03	3188327.77	1281491.63	40.1041240	-104.8267352	3.00	
9723.50†	90.326	1.074	7295.08	-3275.38	-3280.80	-181.77	3188327.02	1281591.61	40.1043984	-104.8267351	3.00	
9814.16	90.259	3.793	7294.62	-3184.93	-3190.23	-177.92	3188330.87	1281682.18	40.1046470	-104.8267189	3.00	3D Arc (J)
9823.50†	90.259	3.793	7294.58	-3175.63	-3180.91	-177.30	3188331.49	1281691.49	40.1046725	-104.8267164	0.00	
9923.50†	90.259	3.793	7294.13	-3076.04	-3081.13	-170.69	3188338.11	1281791.27	40.1049463	-104.8266901	0.00	
10023.50†	90.259	3.793	7293.67	-2976.45	-2981.35	-164.07	3188344.72	1281891.04	40.1052200	-104.8266637	0.00	
10123.50†	90.259	3.793	7293.22	-2876.86	-2881.57	-157.46	3188351.34	1281990.82	40.1054938	-104.8266374	0.00	
10223.50†	90.259	3.793	7292.77	-2777.28	-2781.79	-150.84	3188357.95	1282090.59	40.1057676	-104.8266110	0.00	
10274.04	90.259	3.793	7292.54	-2726.94	-2731.36	-147.50	3188361.29	1282141.02	40.1059059	-104.8265977	0.00	LAT TARGET2
10323.50†	90.298	2.310	7292.30	-2677.64	-2681.98	-144.87	3188363.93	1282190.41	40.1060414	-104.8265869	3.00	
10400.43	90.358	0.003	7291.86	-2600.79	-2605.07	-143.32	3188365.48	1282267.31	40.1062525	-104.8265793	3.00	3D Arc (J)
10423.50†	90.358	0.003	7291.71	-2577.73	-2582.00	-143.31	3188365.48	1282290.38	40.1063158	-104.8265787	0.00	
10523.50†	90.358	0.003	7291.09	-2477.76	-2482.00	-143.31	3188365.48	1282390.37	40.1065903	-104.8265759	0.00	
10623.50†	90.358	0.003	7290.46	-2377.79	-2382.00	-143.30	3188365.49	1282490.37	40.1068648	-104.8265732	0.00	
10723.50†	90.358	0.003	7289.84	-2277.82	-2282.00	-143.30	3188365.49	1282590.36	40.1071393	-104.8265705	0.00	
10823.50†	90.358	0.003	7289.21	-2177.85	-2182.01	-143.29	3188365.50	1282690.36	40.1074138	-104.8265677	0.00	
10923.50†	90.358	0.003	7288.59	-2077.89	-2082.01	-143.29	3188365.50	1282790.35	40.1076883	-104.8265650	0.00	
11023.50†	90.358	0.003	7287.96	-1977.92	-1982.01	-143.28	3188365.51	1282890.34	40.1079628	-104.8265623	0.00	
11123.50†	90.358	0.003	7287.34	-1877.95	-1882.01	-143.28	3188365.51	1282990.34	40.1082373	-104.8265595	0.00	
11223.50†	90.358	0.003	7286.71	-1777.98	-1782.01	-143.28	3188365.52	1283090.33	40.1085117	-104.8265568	0.00	
11323.50†	90.358	0.003	7286.09	-1678.01	-1682.02	-143.27	3188365.52	1283190.32	40.1087862	-104.8265541	0.00	
11423.50†	90.358	0.003	7285.46	-1578.04	-1582.02	-143.27	3188365.53	1283290.32	40.1090607	-104.8265513	0.00	
11523.50†	90.358	0.003	7284.84	-1478.08	-1482.02	-143.26	3188365.53	1283390.31	40.1093352	-104.8265486	0.00	
11623.50†	90.358	0.003	7284.21	-1378.11	-1382.02	-143.26	3188365.54	1283490.31	40.1096097	-104.8265459	0.00	
11723.50†	90.358	0.003	7283.59	-1278.14	-1282.02	-143.25	3188365.54	1283590.30	40.1098842	-104.8265432	0.00	
11823.50†	90.358	0.003	7282.96	-1178.17	-1182.03	-143.25	3188365.55	1283690.29	40.1101587	-104.8265404	0.00	
11923.50†	90.358	0.003	7282.34	-1078.20	-1082.03	-143.24	3188365.55	1283790.29	40.1104332	-104.8265377	0.00	
12023.50†	90.358	0.003	7281.71	-978.24	-982.03	-143.24	3188365.56	1283890.28	40.1107077	-104.8265350	0.00	

Planned Wellpath Report

LG EVERIST 06 PWP Rev-A.0

Page 5 of 8

REFERENCE WELLPATH IDENTIFICATION

Operator	PETRO OPERATING CO, LLC	Well	LG EVERIST 06
Field	WELD COUNTY (NAD83/GRID)	API/Legal	
Facility	SEC.30-T02N-R66W	Wellbore	LG EVERIST 06 PWB
Slot	SLOT#06 LG EVERIST 06 (1079'FNL & 1127'FWL,SEC.30)		

WELLPATH DATA (216 stations) † = interpolated, ‡ = extrapolated station

MD [ft]	Inclination [°]	Azimuth [°]	TVD [ft]	Vert Sect [ft]	North [ft]	East [ft]	Grid East [US ft]	Grid North [US ft]	Latitude	Longitude	DLS [°/100ft]	Comments
12123.50†	90.358	0.003	7281.09	-878.27	-882.03	-143.23	3188365.56	1283990.28	40.1109822	-104.8265322	0.00	
12223.50†	90.358	0.003	7280.46	-778.30	-782.03	-143.23	3188365.57	1284090.27	40.1112566	-104.8265295	0.00	
12323.50†	90.358	0.003	7279.84	-678.33	-682.03	-143.22	3188365.57	1284190.26	40.1115311	-104.8265268	0.00	
12423.50†	90.358	0.003	7279.21	-578.36	-582.04	-143.22	3188365.58	1284290.26	40.1118056	-104.8265240	0.00	
12523.50†	90.358	0.003	7278.59	-478.40	-482.04	-143.21	3188365.58	1284390.25	40.1120801	-104.8265213	0.00	
12569.21	90.358	0.003	7278.30	-432.70	-436.33	-143.21	3188365.58	1284435.96	40.1122056	-104.8265200	0.00	LAT TARGET3
12623.50†	90.386	358.374	7277.95	-378.42	-382.05	-143.98	3188364.81	1284490.24	40.1123546	-104.8265213	3.00	
12713.55	90.432	355.673	7277.30	-288.42	-292.13	-148.65	3188360.14	1284580.15	40.1126015	-104.8265356	3.00	3D Arc (J)
12723.50†	90.432	355.673	7277.23	-278.47	-282.21	-149.40	3188359.39	1284590.07	40.1126288	-104.8265380	0.00	
12823.50†	90.432	355.673	7276.47	-178.61	-182.50	-156.95	3188351.85	1284689.78	40.1129026	-104.8265623	0.00	
12923.50†	90.432	355.673	7275.72	-78.74	-82.78	-164.49	3188344.30	1284789.49	40.1131765	-104.8265865	0.00	
12996.49	90.432	355.673	7275.17	-5.84	-10.00	-170.00	3188338.79	1284862.27	40.1133764	-104.8266042	0.00	LAT TARGET4
13023.50†	90.417	356.483	7274.97	21.13	16.94	-171.85	3188336.95	1284889.21	40.1134504	-104.8266101	3.00	
13123.50†	90.362	359.483	7274.29	121.12	116.87	-175.37	3188333.43	1284989.13	40.1137248	-104.8266200	3.00	
13223.50†	90.306	2.482	7273.71	221.02	216.84	-173.65	3188335.14	1285089.10	40.1139991	-104.8266111	3.00	
13284.02	90.272	4.298	7273.40	281.32	277.25	-170.07	3188338.72	1285149.51	40.1141649	-104.8265967	3.00	3D Arc (J)
13323.50†	90.272	4.298	7273.21	320.61	316.62	-167.11	3188341.68	1285188.87	40.1142729	-104.8265851	0.00	
13423.50†	90.272	4.298	7272.74	420.11	416.33	-159.62	3188349.17	1285288.59	40.1145465	-104.8265556	0.00	
13523.50†	90.272	4.298	7272.27	519.62	516.05	-152.13	3188356.67	1285388.30	40.1148200	-104.8265261	0.00	
13571.23	90.272	4.298	7272.04	567.11	563.65	-148.55	3188360.24	1285435.90	40.1149506	-104.8265120	0.00	LAT TARGET5
13623.50†	90.316	2.730	7271.77	619.18	615.82	-145.35	3188363.45	1285488.06	40.1150937	-104.8264991	3.00	
13714.43	90.392	0.003	7271.21	710.00	706.71	-143.18	3188365.62	1285578.95	40.1153432	-104.8264889	3.00	3D Arc (J)
13723.50†	90.392	0.003	7271.15	719.07	715.78	-143.18	3188365.62	1285588.02	40.1153681	-104.8264886	0.00	
13823.50†	90.392	0.003	7270.46	819.03	815.78	-143.17	3188365.62	1285688.01	40.1156426	-104.8264859	0.00	
13923.50†	90.392	0.003	7269.78	919.00	915.78	-143.17	3188365.63	1285788.01	40.1159171	-104.8264832	0.00	
14023.50†	90.392	0.003	7269.09	1018.97	1015.77	-143.16	3188365.63	1285888.00	40.1161915	-104.8264804	0.00	
14123.50†	90.392	0.003	7268.41	1118.94	1115.77	-143.15	3188365.64	1285987.99	40.1164660	-104.8264777	0.00	
14223.50†	90.392	0.003	7267.72	1218.90	1215.77	-143.15	3188365.65	1286087.99	40.1167405	-104.8264750	0.00	
14323.50†	90.392	0.003	7267.04	1318.87	1315.77	-143.14	3188365.65	1286187.98	40.1170150	-104.8264722	0.00	
14423.50†	90.392	0.003	7266.35	1418.84	1415.76	-143.14	3188365.66	1286287.97	40.1172895	-104.8264695	0.00	
14523.50†	90.392	0.003	7265.67	1518.81	1515.76	-143.13	3188365.66	1286387.97	40.1175640	-104.8264667	0.00	
14623.50†	90.392	0.003	7264.98	1618.77	1615.76	-143.12	3188365.67	1286487.96	40.1178385	-104.8264640	0.00	
14723.50†	90.392	0.003	7264.30	1718.74	1715.76	-143.12	3188365.68	1286587.95	40.1181130	-104.8264613	0.00	
14823.50†	90.392	0.003	7263.61	1818.71	1815.75	-143.11	3188365.68	1286687.95	40.1183875	-104.8264585	0.00	
14857.75	90.392	0.003	7263.38	1852.94	1850.00	-143.11	3188365.68	1286722.19	40.1184815	-104.8264576	0.00	LAT TARGET6
14923.50†	90.377	358.031	7262.94	1918.69	1915.74	-144.24	3188364.56	1286787.93	40.1186619	-104.8264598	3.00	
15023.50†	90.353	355.031	7262.30	2018.61	2015.54	-150.29	3188358.51	1286887.73	40.1189360	-104.8264788	3.00	
15027.10	90.352	354.923	7262.28	2022.21	2019.13	-150.60	3188358.19	1286891.31	40.1189459	-104.8264798	3.00	3D Arc (J)
15123.50†	90.352	354.923	7261.69	2118.41	2115.15	-159.13	3188349.66	1286987.33	40.1192096	-104.8265077	0.00	
15223.50†	90.352	354.923	7261.07	2218.20	2214.75	-167.98	3188340.81	1287086.93	40.1194832	-104.8265366	0.00	
15323.50†	90.352	354.923	7260.46	2317.99	2314.36	-176.83	3188331.96	1287186.53	40.1197568	-104.8265656	0.00	
15359.28	90.352	354.923	7260.24	2353.70	2350.00	-180.00	3188328.80	1287222.17	40.1198547	-104.8265759	0.00	LAT TARGET7
15423.50†	90.323	356.849	7259.86	2417.84	2414.05	-184.61	3188324.19	1287286.22	40.1200306	-104.8265907	3.00	
15523.50†	90.278	359.849	7259.34	2517.83	2514.00	-187.49	3188321.31	1287386.16	40.1203050	-104.8265982	3.00	
15623.50†	90.233	2.849	7258.89	2617.70	2613.96	-185.13	3188323.66	1287486.11	40.1205794	-104.8265871	3.00	

Planned Wellpath Report

LG EVERIST 06 PWP Rev-A.0

Page 6 of 8

REFERENCE WELLPATH IDENTIFICATION

Operator	PETRO OPERATING CO, LLC	Well	LG EVERIST 06
Field	WELD COUNTY (NAD83/GRID)	API/Legal	
Facility	SEC.30-T02N-R66W	Wellbore	LG EVERIST 06 PWB
Slot	SLOT#06 LG EVERIST 06 (1079'FNL & 1127'FWL,SEC.30)		

WELLPATH DATA (216 stations) † = interpolated, ‡ = extrapolated station

MD [ft]	Inclination [°]	Azimuth [°]	TVD [ft]	Vert Sect [ft]	North [ft]	East [ft]	Grid East [US ft]	Grid North [US ft]	Latitude	Longitude	DLS [°/100ft]	Comments
15674.51	90.209	4.379	7258.69	2668.51	2664.86	-181.92	3188326.88	1287537.01	40.1207190	-104.8265742	3.00	3D Arc (J)
15723.50†	90.209	4.379	7258.51	2717.25	2713.71	-178.18	3188330.62	1287585.86	40.1208530	-104.8265595	0.00	
15823.50†	90.209	4.379	7258.15	2816.74	2813.42	-170.54	3188338.25	1287685.57	40.1211266	-104.8265295	0.00	
15923.50†	90.209	4.379	7257.78	2916.23	2913.12	-162.91	3188345.89	1287785.27	40.1214001	-104.8264995	0.00	
16023.50†	90.209	4.379	7257.42	3015.73	3012.83	-155.27	3188353.52	1287884.97	40.1216736	-104.8264695	0.00	
16110.92	90.209	4.379	7257.10	3102.71	3100.00	-148.60	3188360.19	1287972.14	40.1219128	-104.8264433	0.00	LAT TARGET8
16123.50†	90.224	4.002	7257.05	3115.22	3112.54	-147.68	3188361.11	1287984.68	40.1219472	-104.8264397	3.00	
16223.50†	90.343	1.004	7256.56	3214.98	3212.43	-143.31	3188365.48	1288084.57	40.1222213	-104.8264213	3.00	
16256.90	90.382	0.003	7256.35	3248.36	3245.83	-143.02	3188365.77	1288117.96	40.1223129	-104.8264194	3.00	3D Arc (J)
16323.50†	90.382	0.003	7255.90	3314.94	3312.43	-143.02	3188365.78	1288184.56	40.1224958	-104.8264175	0.00	
16423.50†	90.382	0.003	7255.24	3414.90	3412.43	-143.01	3188365.78	1288284.55	40.1227702	-104.8264148	0.00	
16523.50†	90.382	0.003	7254.57	3514.87	3512.43	-143.01	3188365.78	1288384.55	40.1230447	-104.8264121	0.00	
16623.50†	90.382	0.003	7253.90	3614.84	3612.42	-143.00	3188365.79	1288484.54	40.1233192	-104.8264093	0.00	
16723.50†	90.382	0.003	7253.23	3714.81	3712.42	-143.00	3188365.79	1288584.53	40.1235937	-104.8264066	0.00	
16823.50†	90.382	0.003	7252.57	3814.77	3812.42	-142.99	3188365.80	1288684.53	40.1238682	-104.8264039	0.00	
16923.50†	90.382	0.003	7251.90	3914.74	3912.42	-142.99	3188365.80	1288784.52	40.1241427	-104.8264011	0.00	
17023.50†	90.382	0.003	7251.23	4014.71	4012.41	-142.98	3188365.81	1288884.51	40.1244172	-104.8263984	0.00	
17123.50†	90.382	0.003	7250.57	4114.68	4112.41	-142.98	3188365.81	1288984.51	40.1246917	-104.8263957	0.00	
17223.50†	90.382	0.003	7249.90	4214.65	4212.41	-142.98	3188365.82	1289084.50	40.1249662	-104.8263929	0.00	
17323.50†	90.382	0.003	7249.23	4314.61	4312.41	-142.97	3188365.82	1289184.49	40.1252406	-104.8263902	0.00	
17423.50†	90.382	0.003	7248.57	4414.58	4412.41	-142.97	3188365.83	1289284.49	40.1255151	-104.8263875	0.00	
17523.50†	90.382	0.003	7247.90	4514.55	4512.40	-142.96	3188365.83	1289384.48	40.1257896	-104.8263847	0.00	
17623.50†	90.382	0.003	7247.23	4614.52	4612.40	-142.96	3188365.84	1289484.47	40.1260641	-104.8263820	0.00	
17723.50†	90.382	0.003	7246.57	4714.48	4712.40	-142.95	3188365.85	1289584.47	40.1263386	-104.8263793	0.00	
17823.50†	90.382	0.003	7245.90	4814.45	4812.40	-142.95	3188365.84	1289684.46	40.1266131	-104.8263765	0.00	
17923.50†	90.382	0.003	7245.23	4914.42	4912.39	-142.94	3188365.85	1289784.46	40.1268876	-104.8263738	0.00	
18023.50†	90.382	0.003	7244.57	5014.39	5012.39	-142.94	3188365.86	1289884.45	40.1271621	-104.8263711	0.00	
18123.50†	90.382	0.003	7243.90	5114.36	5112.39	-142.93	3188365.86	1289984.44	40.1274366	-104.8263683	0.00	
18223.50†	90.382	0.003	7243.23	5214.32	5212.39	-142.93	3188365.87	1290084.44	40.1277110	-104.8263656	0.00	
18323.50†	90.382	0.003	7242.56	5314.29	5312.39	-142.92	3188365.87	1290184.43	40.1279855	-104.8263629	0.00	
18423.50†	90.382	0.003	7241.90	5414.26	5412.38	-142.92	3188365.88	1290284.42	40.1282600	-104.8263601	0.00	
18523.50†	90.382	0.003	7241.23	5514.23	5512.38	-142.91	3188365.88	1290384.42	40.1285345	-104.8263574	0.00	
18623.50†	90.382	0.003	7240.56	5614.19	5612.38	-142.91	3188365.89	1290484.41	40.1288090	-104.8263547	0.00	
18723.50†	90.382	0.003	7239.90	5714.16	5712.38	-142.90	3188365.89	1290584.40	40.1290835	-104.8263519	0.00	
18823.50†	90.382	0.003	7239.23	5814.13	5812.37	-142.90	3188365.89	1290684.40	40.1293580	-104.8263492	0.00	
18858.00	90.382	0.003	7239.00‡	5848.62	5846.87	-142.90	3188365.90	1290718.89	40.1294527	-104.8263483	0.00	TD

HOLE & CASING SECTIONS

- Ref Wellbore: LG EVERIST 06 PWB Ref Wellpath: LG EVERIST 06 PWP Rev-A.0

String/Diameter	Start MD [ft]	End MD [ft]	Interval [ft]	Start TVD [ft]	End TVD [ft]	Start N/S [ft]	Start E/W [ft]	End N/S [ft]	End E/W [ft]
9.625in Casing Surface	23.50	1839.31	1815.81	23.50	1810.00	0.00	0.00	-245.60	-11.15

Planned Wellpath Report

LG EVERIST 06 PWP Rev-A.0

Page 7 of 8

REFERENCE WELLPATH IDENTIFICATION

Operator	PETRO OPERATING CO, LLC	Well	LG EVERIST 06
Field	WELD COUNTY (NAD83/GRID)	API/Legal	
Facility	SEC.30-T02N-R66W	Wellbore	LG EVERIST 06 PWB
Slot	SLOT#06 LG EVERIST 06 (1079'FNL & 1127'FWL,SEC.30)		

TARGETS

Name	MD [ft]	TVD [ft]	North [ft]	East [ft]	Grid East [US ft]	Grid North [US ft]	Latitude	Longitude	Shape
SEC.19-T02N-R66W	N/A	0.00	-65.26	37.02	3188545.81	1284807.01	40.1132204	-104.8258656	polygon
2D Polygon: dimensions not calculated									
SEC.19/30-T02N-R66W (SB 460')	N/A	0.00	-65.26	37.02	3188545.81	1284807.01	40.1132204	-104.8258656	polygon
2D Polygon: dimensions not calculated									
SEC.30-T02N-R66W	N/A	0.00	-65.26	37.02	3188545.81	1284807.01	40.1132204	-104.8258656	polygon
2D Polygon: dimensions not calculated									
2) LG EVERIST 06 BHL REV-1 (464'FNL & 1000'FWL,SEC.19)	18858.00	7239.00	5846.87	-142.90	3188365.90	1290718.89	40.1294527	-104.8263483	point
1) LG EVERIST 06 LP REV-1 (454'FSL & 946'FWL,SEC.30)	9235.87	7299.00	-3766.46	-143.40	3188365.39	1281105.97	40.1030645	-104.8266111	point

SURVEY PROGRAM - Ref Wellbore: LG EVERIST 06 PWB Ref Wellpath: LG EVERIST 06 PWP Rev-A.0

Start MD [ft]	End MD [ft]	Positional Uncertainty Model	Log Name/Comment	Wellbore
23.50	1839.31	BH NaviTrak (2019) (Axial+IFR1+SAG)		LG EVERIST 06 PWB
1839.31	18858.00	BH AutoTrak Curve/eXpress (2019) (IFR1, SAG, Short spacing)		LG EVERIST 06 PWB

Planned Wellpath Report

LG EVERIST 06 PWP Rev-A.0

Page 8 of 8

REFERENCE WELLPATH IDENTIFICATION

Operator	PETRO OPERATING CO, LLC	Well	LG EVERIST 06
Field	WELD COUNTY (NAD83/GRID)	API/Legal	
Facility	SEC.30-T02N-R66W	Wellbore	LG EVERIST 06 PWB
Slot	SLOT#06 LG EVERIST 06 (1079'FNL & 1127'FWL,SEC.30)		

DESIGN COMMENTS

MD [ft]	Inclination [°]	Azimuth [°]	TVD [ft]	Comment
23.50	0.000	182.600	23.50	Tie On
550.00	0.000	182.600	550.00	End of Tangent
1350.00	16.000	182.600	1339.64	End of Build (J)
1839.31	16.000	182.600	1810.00	End of Tangent (J)
1914.31	16.000	182.600	1882.09	End of Tangent
3356.16	44.837	182.600	3112.39	End of Build (J)
6656.16	44.837	182.600	5452.47	End of Tangent (J)
6942.66	44.838	174.470	5655.80	Build (XS)
7882.51	44.838	174.470	6322.25	KOP
9235.87	90.506	353.546	7299.00	LANDING
9472.50	90.506	353.546	7296.91	LAT TARGET1
9814.16	90.259	3.793	7294.62	3D Arc (J)
10274.04	90.259	3.793	7292.54	LAT TARGET2
10400.43	90.358	0.003	7291.86	3D Arc (J)
12569.21	90.358	0.003	7278.30	LAT TARGET3
12713.55	90.432	355.673	7277.30	3D Arc (J)
12996.49	90.432	355.673	7275.17	LAT TARGET4
13284.02	90.272	4.298	7273.40	3D Arc (J)
13571.23	90.272	4.298	7272.04	LAT TARGET5
13714.43	90.392	0.003	7271.21	3D Arc (J)
14857.75	90.392	0.003	7263.38	LAT TARGET6
15027.10	90.352	354.923	7262.28	3D Arc (J)
15359.28	90.352	354.923	7260.24	LAT TARGET7
15674.51	90.209	4.379	7258.69	3D Arc (J)
16110.92	90.209	4.379	7257.10	LAT TARGET8
16256.90	90.382	0.003	7256.35	3D Arc (J)
18858.00	90.382	0.003	7239.00	TD