

PETRO OPERATING CO, LLC

Location: COLORADO Slot: SLOT#05 LG EVERIST 05 (1092°FNL & 1134°FWL,SEC.30)

Field: WELD COUNTY (NAD83/GRID) Well: LG EVERIST 05

Facility: SEC.30-T02N-R66W Wellbore: LG EVERIST 05 PWB

Plot reference wellpath is LG EVERIST 05 PWP Rev-A.0
True vertical depths are referenced to Ensign 140 (23.5') (RKB)
Reference wellpath measured depths are referenced to Ensign 140 (23.5') (RKB)
Ensign 140 (23.5') (RKB) to Mean Sea Level: 4897.5 feet
Mean Sea Level to Ground level (At Slot: SLOT#05 LG EVERIST 05 (1092°FNL & 1134°FWL,SEC.30)): -4874 feet
Offset wellpath MDs are referenced to each path's default MD datum
Created by: painsetr on 2023-10-15; Database: WellArchitectDB

Location Information

Facility Name			Grid East (US ft)	Grid North (US ft)	Latitude	Longitude
SEC.30-T02N-R66W			3188545.810	1284807.010	40°06'47.5934"N	104°49'33.1162"W
Slot	Local N (ft)	Local E (ft)	Grid East (US ft)	Grid North (US ft)	Latitude	Longitude
SLOT#05 LG EVERIST 05 (1092°FNL & 1134°FWL,SEC.30)	52.16	-29.60	3188516.213	1284859.171	40°06'48.1111"N	104°49'33.4920"W
Ensign 140 (23.5') (RKB) to Ground level (At Slot: SLOT#05 LG EVERIST 05 (1092°FNL & 1134°FWL,SEC.30))						23.5ft
Mean Sea Level to Ground level (At Slot: SLOT#05 LG EVERIST 05 (1092°FNL & 1134°FWL,SEC.30))						-4874ft
Ensign 140 (23.5') (RKB) to Mean Sea Level						4897.5ft

Survey Program

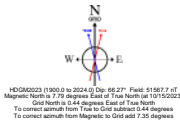
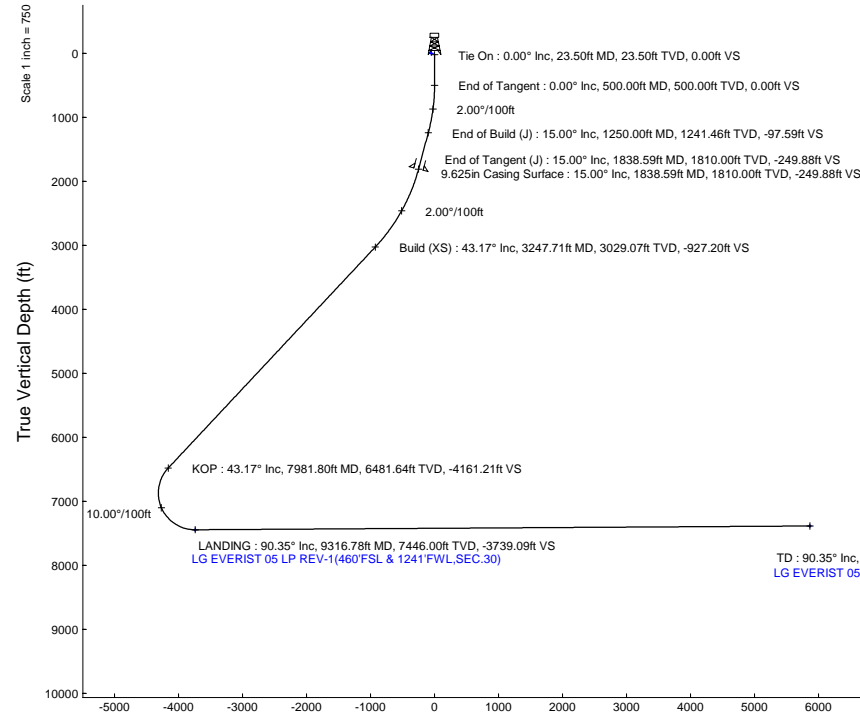
Start MD (ft)	End MD (ft)	Tool	Model	Log Name/Comment	Wellbore
23.50	1838.59	BH NavTrak (2019)	BH NavTrak (2019) (Axial+IFR1+SAG)		LG EVERIST 05 PWB
1838.59	18926.62	BH AutoTrak Curve/xpress (2019)	BH AutoTrak Curve/xpress (2019) (IFR1, SAG, Short spacing)		LG EVERIST 05 PWB

Bottom Hole Location

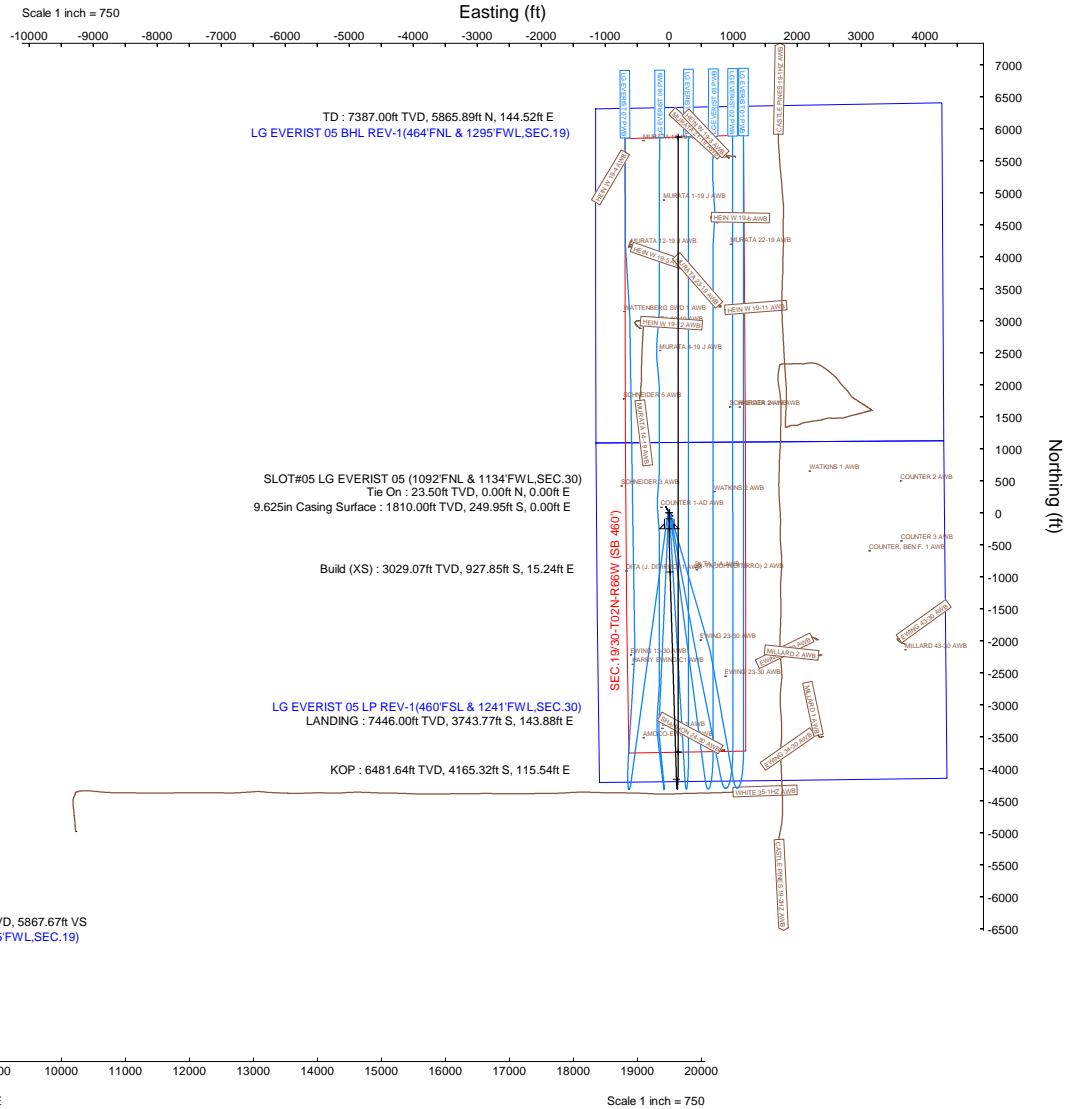
MD (ft)	Inc (")	Az (")	TVD (ft)	Local N (ft)	Local E (ft)	Grid East (US ft)	Grid North (US ft)	Latitude	Longitude
18926.62	90.352	0.004	7387.00	5865.89	144.52	3188660.72	1290724.82	40°07'46.0660"N	104°49'31.0575"W

Targets

Name	MD (ft)	TVD (ft)	Local N (ft)	Local E (ft)	Grid East (US ft)	Grid North (US ft)	Latitude	Longitude
SEC.19-T02N-R66W	N/A	0.00	-52.16	29.59	3188545.81	1284807.01	40°06'47.5934"N	104°49'33.1162"W
SEC.19/30-T02N-R66W (SB 460)	N/A	0.00	-52.16	29.59	3188545.81	1284807.01	40°06'47.5934"N	104°49'33.1162"W
SEC.30-T02N-R66W	N/A	0.00	-52.16	29.59	3188545.81	1284807.01	40°06'47.5934"N	104°49'33.1162"W
LG EVERIST 05 BHL REV-1(460°FNL & 1295°FWL,SEC.19)	18926.62	7387.00	5865.89	144.52	3188660.73	1290724.81	40°07'46.0660"N	104°49'31.0575"W
LG EVERIST 05 LP REV-1(460°FSL & 1241°FWL,SEC.30)	9316.78	7446.00	-3743.77	143.88	3188660.09	1281115.56	40°06'11.1049"N	104°49'32.0067"W



Well Profile Data								
Design Comment	MD (ft)	Inc (")	Az (")	TVD (ft)	Local N (ft)	Local E (ft)	DLS (°/100ft)	VS (ft)
Tie On	23.50	0.000	180.000	23.50	0.00	0.00	0.00	0.00
End of Tangent	500.00	0.000	180.000	500.00	0.00	0.00	0.00	0.00
End of Build (J)	1250.00	15.000	180.000	1241.46	-97.62	0.00	2.00	-97.59
End of Tangent (J)	1838.59	15.000	180.000	1810.00	-249.95	0.00	0.00	-249.88
Build (XS)	3247.71	43.172	178.225	3029.07	-927.85	15.24	2.00	-927.20
KOP	7981.80	43.172	178.225	6481.64	-4165.32	115.54	0.00	-4161.21
LANDING	9316.78	90.352	0.004	7446.00	-3743.77	143.88	10.00	-3739.09
TD	18926.62	90.352	0.004	7387.00	5865.89	144.52	0.00	5867.67



Planned Wellpath Report

LG EVERIST 05 PWP Rev-A.0

Page 1 of 8

REFERENCE WELLPATH IDENTIFICATION

Operator	PETRO OPERATING CO, LLC	Well	LG EVERIST 05
Field	WELD COUNTY (NAD83/GRID)	API/Legal	
Facility	SEC.30-T02N-R66W	Wellbore	LG EVERIST 05 PWB
Slot	SLOT#05 LG EVERIST 05 (1092'FNL & 1134'FWL,SEC.30)		

REPORT SETUP INFORMATION

Projection System	NAD83 / Lambert Colorado SP, Northern Zone (501), US feet	Software System	WellArchitect® 6.0
North Reference	Grid	User	Painsetr
Scale	0.999960	Report Generated	10/15/2023 at 2:14:14 PM
Convergence at slot	0.44° East	Database	WellArchitectDB

WELLPATH LOCATION

	Local coordinates		Grid coordinates		Geographic coordinates	
	North[ft]	East[ft]	Easting[US ft]	Northing[US ft]	Latitude	Longitude
Slot Location	52.16	-29.60	3188516.21	1284859.17	40.1133642°	-104.8259700°
Facility Reference Pt			3188545.81	1284807.01	40.1132204°	-104.8258656°
Field Reference Pt			3188545.81	1284807.01	40.1132204°	-104.8258656°

WELLPATH DATUM

Calculation method	Minimum curvature	Ensign 140 (23.5') (RKB) to Facility Vertical Datum	4897.50ft
Horizontal Reference Pt	Slot	Ensign 140 (23.5') (RKB) to Mean Sea Level	4897.50ft
Vertical Reference Pt	Ensign 140 (23.5') (RKB)	Ensign 140 (23.5') (RKB) to Ground Level at Slot (SLOT#05 LG EVERIST 05 (1092'FNL & 1134'FWL,SEC.30))	23.50ft
MD Reference Pt	Ensign 140 (23.5') (RKB)	Section Origin	N 0.00, E 0.00 ft
Field Vertical Reference	Mean Sea Level	Section Azimuth	1.41°

Planned Wellpath Report

LG EVERIST 05 PWP Rev-A.0
Page 2 of 8

REFERENCE WELLPATH IDENTIFICATION

Operator	PETRO OPERATING CO, LLC	Well	LG EVERIST 05
Field	WELD COUNTY (NAD83/GRID)	API/Legal	
Facility	SEC.30-T02N-R66W	Wellbore	LG EVERIST 05 PWB
Slot	SLOT#05 LG EVERIST 05 (1092'FNL & 1134'FWL,SEC.30)		

WELLPATH DATA (198 stations) † = interpolated, ‡ = extrapolated station

MD [ft]	Inclination [°]	Azimuth [°]	TVD [ft]	Vert Sect [ft]	North [ft]	East [ft]	Grid East [US ft]	Grid North [US ft]	Latitude	Longitude	DLS [°/100ft]	Comments
0.00†	0.000	180.000	0.00	0.00	0.00	0.00	3188516.21	1284859.17	40.1133642	-104.8259700	0.00	
23.50	0.000	180.000	23.50	0.00	0.00	0.00	3188516.21	1284859.17	40.1133642	-104.8259700	0.00	Tie On
123.50†	0.000	180.000	123.50	0.00	0.00	0.00	3188516.21	1284859.17	40.1133642	-104.8259700	0.00	
223.50†	0.000	180.000	223.50	0.00	0.00	0.00	3188516.21	1284859.17	40.1133642	-104.8259700	0.00	
323.50†	0.000	180.000	323.50	0.00	0.00	0.00	3188516.21	1284859.17	40.1133642	-104.8259700	0.00	
423.50†	0.000	180.000	423.50	0.00	0.00	0.00	3188516.21	1284859.17	40.1133642	-104.8259700	0.00	
500.00	0.000	180.000	500.00	0.00	0.00	0.00	3188516.21	1284859.17	40.1133642	-104.8259700	0.00	End of Tangent
523.50†	0.470	180.000	523.50	-0.10	-0.10	0.00	3188516.21	1284859.07	40.1133639	-104.8259700	2.00	
623.50†	2.470	180.000	623.46	-2.66	-2.66	0.00	3188516.21	1284856.51	40.1133569	-104.8259701	2.00	
723.50†	4.470	180.000	723.27	-8.71	-8.71	0.00	3188516.21	1284850.46	40.1133403	-104.8259702	2.00	
823.50†	6.470	180.000	822.81	-18.24	-18.25	0.00	3188516.21	1284840.93	40.1133141	-104.8259705	2.00	
923.50†	8.470	180.000	921.96	-31.24	-31.25	0.00	3188516.21	1284827.93	40.1132784	-104.8259708	2.00	
1023.50†	10.470	180.000	1020.59	-47.68	-47.70	0.00	3188516.21	1284811.47	40.1132333	-104.8259713	2.00	
1123.50†	12.470	180.000	1118.59	-67.56	-67.58	0.00	3188516.21	1284791.59	40.1131787	-104.8259718	2.00	
1223.50†	14.470	180.000	1215.83	-90.85	-90.88	0.00	3188516.21	1284768.30	40.1131147	-104.8259725	2.00	
1250.00	15.000	180.000	1241.46	-97.59	-97.62	0.00	3188516.21	1284761.56	40.1130962	-104.8259727	2.00	End of Build (J)
1323.50†	15.000	180.000	1312.46	-116.60	-116.64	0.00	3188516.21	1284742.54	40.1130440	-104.8259732	0.00	
1423.50†	15.000	180.000	1409.05	-142.48	-142.52	0.00	3188516.21	1284716.66	40.1129730	-104.8259739	0.00	
1523.50†	15.000	180.000	1505.64	-168.35	-168.40	0.00	3188516.21	1284690.78	40.1129019	-104.8259746	0.00	
1623.50†	15.000	180.000	1602.24	-194.23	-194.28	0.00	3188516.21	1284664.89	40.1128309	-104.8259753	0.00	
1723.50†	15.000	180.000	1698.83	-220.10	-220.17	0.00	3188516.21	1284639.01	40.1127598	-104.8259760	0.00	
1823.50†	15.000	180.000	1795.42	-245.97	-246.05	0.00	3188516.21	1284613.13	40.1126888	-104.8259767	0.00	
1838.59	15.000	180.000	1810.00	-249.88	-249.95	0.00	3188516.21	1284609.23	40.1126781	-104.8259768	0.00	End of Tangent (J)
1923.50†	16.697	179.735	1891.68	-273.06	-273.14	0.06	3188516.27	1284586.04	40.1126144	-104.8259772	2.00	
2023.50†	18.695	179.483	1986.94	-303.44	-303.53	0.27	3188516.48	1284555.65	40.1125310	-104.8259773	2.00	
2123.50†	20.694	179.278	2081.08	-337.11	-337.23	0.64	3188516.85	1284521.95	40.1124385	-104.8259769	2.00	
2223.50†	22.693	179.107	2174.00	-374.05	-374.19	1.16	3188517.37	1284485.00	40.1123370	-104.8259760	2.00	
2323.50†	24.692	178.963	2265.56	-414.19	-414.37	1.84	3188518.05	1284444.82	40.1122267	-104.8259747	2.00	
2423.50†	26.691	178.840	2355.67	-457.50	-457.71	2.67	3188518.88	1284401.48	40.1121078	-104.8259729	2.00	
2523.50†	28.691	178.732	2444.22	-503.92	-504.17	3.66	3188519.87	1284355.03	40.1119802	-104.8259706	2.00	
2623.50†	30.690	178.637	2531.08	-553.40	-553.68	4.79	3188521.01	1284305.51	40.1118443	-104.8259679	2.00	
2723.50†	32.690	178.553	2616.17	-605.86	-606.19	6.08	3188522.30	1284253.00	40.1117001	-104.8259647	2.00	
2823.50†	34.689	178.478	2699.37	-661.26	-661.64	7.52	3188523.73	1284197.56	40.1115479	-104.8259611	2.00	
2923.50†	36.689	178.409	2780.59	-719.51	-719.96	9.11	3188525.32	1284139.24	40.1113878	-104.8259570	2.00	
3023.50†	38.689	178.347	2859.72	-780.56	-781.07	10.84	3188527.05	1284078.14	40.1112200	-104.8259525	2.00	
3123.50†	40.688	178.290	2936.67	-844.33	-844.90	12.71	3188528.92	1284014.31	40.1110447	-104.8259475	2.00	
3223.50†	42.688	178.238	3011.34	-910.73	-911.37	14.73	3188530.94	1283947.84	40.1108622	-104.8259421	2.00	
3247.71	43.172	178.225	3029.07	-927.20	-927.85	15.24	3188531.45	1283931.36	40.1108170	-104.8259407	2.00	Build (XS)
3323.50†	43.172	178.225	3084.34	-978.97	-979.68	16.84	3188533.05	1283879.53	40.1106747	-104.8259364	0.00	
3423.50†	43.172	178.225	3157.27	-1047.28	-1048.07	18.96	3188535.17	1283811.15	40.1104869	-104.8259307	0.00	
3523.50†	43.172	178.225	3230.20	-1115.60	-1116.45	21.08	3188537.29	1283742.76	40.1102991	-104.8259250	0.00	
3623.50†	43.172	178.225	3303.13	-1183.91	-1184.84	23.20	3188539.41	1283674.38	40.1101114	-104.8259193	0.00	
3723.50†	43.172	178.225	3376.06	-1252.22	-1253.23	25.32	3188541.53	1283606.00	40.1099236	-104.8259135	0.00	
3823.50†	43.172	178.225	3448.99	-1320.54	-1321.61	27.44	3188543.65	1283537.61	40.1097358	-104.8259078	0.00	
3923.50†	43.172	178.225	3521.92	-1388.85	-1390.00	29.55	3188545.77	1283469.23	40.1095481	-104.8259021	0.00	

Planned Wellpath Report

LG EVERIST 05 PWP Rev-A.0
Page 3 of 8

REFERENCE WELLPATH IDENTIFICATION			
Operator	PETRO OPERATING CO, LLC	Well	LG EVERIST 05
Field	WELD COUNTY (NAD83/GRID)	API/Legal	
Facility	SEC.30-T02N-R66W	Wellbore	LG EVERIST 05 PWB
Slot	SLOT#05 LG EVERIST 05 (1092'FNL & 1134'FWL,SEC.30)		

WELLPATH DATA (198 stations) † = interpolated, ‡ = extrapolated station												
MD [ft]	Inclination [°]	Azimuth [°]	TVD [ft]	Vert Sect [ft]	North [ft]	East [ft]	Grid East [US ft]	Grid North [US ft]	Latitude	Longitude	DLS [°/100ft]	Comments
4023.50†	43.172	178.225	3594.85	-1457.16	-1458.39	31.67	3188547.88	1283400.85	40.1093603	-104.8258964	0.00	
4123.50†	43.172	178.225	3667.78	-1525.48	-1526.77	33.79	3188550.00	1283332.46	40.1091726	-104.8258907	0.00	
4223.50†	43.172	178.225	3740.71	-1593.79	-1595.16	35.91	3188552.12	1283264.08	40.1089848	-104.8258850	0.00	
4323.50†	43.172	178.225	3813.64	-1662.10	-1663.55	38.03	3188554.24	1283195.70	40.1087970	-104.8258793	0.00	
4423.50†	43.172	178.225	3886.57	-1730.42	-1731.93	40.15	3188556.36	1283127.31	40.1086093	-104.8258735	0.00	
4523.50†	43.172	178.225	3959.50	-1798.73	-1800.32	42.27	3188558.48	1283058.93	40.1084215	-104.8258678	0.00	
4623.50†	43.172	178.225	4032.43	-1867.04	-1868.70	44.38	3188560.60	1282990.54	40.1082338	-104.8258621	0.00	
4723.50†	43.172	178.225	4105.36	-1935.36	-1937.09	46.50	3188562.72	1282922.16	40.1080460	-104.8258564	0.00	
4823.50†	43.172	178.225	4178.29	-2003.67	-2005.48	48.62	3188564.83	1282853.78	40.1078582	-104.8258507	0.00	
4923.50†	43.172	178.225	4251.22	-2071.99	-2073.86	50.74	3188566.95	1282785.39	40.1076705	-104.8258450	0.00	
5023.50†	43.172	178.225	4324.15	-2140.30	-2142.25	52.86	3188569.07	1282717.01	40.1074827	-104.8258392	0.00	
5123.50†	43.172	178.225	4397.08	-2208.61	-2210.64	54.98	3188571.19	1282648.63	40.1072949	-104.8258335	0.00	
5223.50†	43.172	178.225	4470.01	-2276.93	-2279.02	57.10	3188573.31	1282580.24	40.1071072	-104.8258278	0.00	
5323.50†	43.172	178.225	4542.94	-2345.24	-2347.41	59.22	3188575.43	1282511.86	40.1069194	-104.8258221	0.00	
5423.50†	43.172	178.225	4615.87	-2413.55	-2415.80	61.33	3188577.55	1282443.48	40.1067317	-104.8258164	0.00	
5523.50†	43.172	178.225	4688.80	-2481.87	-2484.18	63.45	3188579.66	1282375.09	40.1065439	-104.8258107	0.00	
5623.50†	43.172	178.225	4761.73	-2550.18	-2552.57	65.57	3188581.78	1282306.71	40.1063561	-104.8258050	0.00	
5723.50†	43.172	178.225	4834.66	-2618.49	-2620.96	67.69	3188583.90	1282238.33	40.1061684	-104.8257992	0.00	
5823.50†	43.172	178.225	4907.59	-2686.81	-2689.34	69.81	3188586.02	1282169.94	40.1059806	-104.8257935	0.00	
5923.50†	43.172	178.225	4980.52	-2755.12	-2757.73	71.93	3188588.14	1282101.56	40.1057928	-104.8257878	0.00	
6023.50†	43.172	178.225	5053.45	-2823.43	-2826.11	74.05	3188590.26	1282033.18	40.1056051	-104.8257821	0.00	
6123.50†	43.172	178.225	5126.38	-2891.75	-2894.50	76.17	3188592.38	1281964.79	40.1054173	-104.8257764	0.00	
6223.50†	43.172	178.225	5199.31	-2960.06	-2962.89	78.28	3188594.49	1281896.41	40.1052296	-104.8257707	0.00	
6323.50†	43.172	178.225	5272.24	-3028.37	-3031.27	80.40	3188596.61	1281828.03	40.1050418	-104.8257649	0.00	
6423.50†	43.172	178.225	5345.17	-3096.69	-3099.66	82.52	3188598.73	1281759.64	40.1048540	-104.8257592	0.00	
6523.50†	43.172	178.225	5418.10	-3165.00	-3168.05	84.64	3188600.85	1281691.26	40.1046663	-104.8257535	0.00	
6623.50†	43.172	178.225	5491.03	-3233.31	-3236.43	86.76	3188602.97	1281622.87	40.1044785	-104.8257478	0.00	
6723.50†	43.172	178.225	5563.97	-3301.63	-3304.82	88.88	3188605.09	1281554.49	40.1042907	-104.8257421	0.00	
6823.50†	43.172	178.225	5636.90	-3369.94	-3373.21	91.00	3188607.21	1281486.11	40.1041030	-104.8257364	0.00	
6923.50†	43.172	178.225	5709.83	-3438.25	-3441.59	93.12	3188609.32	1281417.72	40.1039152	-104.8257307	0.00	
7023.50†	43.172	178.225	5782.76	-3506.57	-3509.98	95.23	3188611.44	1281349.34	40.1037275	-104.8257249	0.00	
7123.50†	43.172	178.225	5855.69	-3574.88	-3578.36	97.35	3188613.56	1281280.96	40.1035397	-104.8257192	0.00	
7223.50†	43.172	178.225	5928.62	-3643.20	-3646.75	99.47	3188615.68	1281212.57	40.1033519	-104.8257135	0.00	
7323.50†	43.172	178.225	6001.55	-3711.51	-3715.14	101.59	3188617.80	1281144.19	40.1031642	-104.8257078	0.00	
7423.50†	43.172	178.225	6074.48	-3779.82	-3783.52	103.71	3188619.92	1281075.81	40.1029764	-104.8257021	0.00	
7523.50†	43.172	178.225	6147.41	-3848.14	-3851.91	105.83	3188622.04	1281007.42	40.1027887	-104.8256964	0.00	
7623.50†	43.172	178.225	6220.34	-3916.45	-3920.30	107.95	3188624.16	1280939.04	40.1026009	-104.8256907	0.00	
7723.50†	43.172	178.225	6293.27	-3984.76	-3988.68	110.07	3188626.27	1280870.66	40.1024131	-104.8256849	0.00	
7823.50†	43.172	178.225	6366.20	-4053.08	-4057.07	112.18	3188628.39	1280802.27	40.1022254	-104.8256792	0.00	
7923.50†	43.172	178.225	6439.13	-4121.39	-4125.46	114.30	3188630.51	1280733.89	40.1020376	-104.8256735	0.00	
7981.80	43.172	178.225	6481.64	-4161.21	-4165.32	115.54	3188631.75	1280694.02	40.1019281	-104.8256702	0.00	KOP
8023.50†	39.006	177.942	6513.07	-4188.57	-4192.71	116.45	3188632.66	1280666.64	40.1018529	-104.8256677	10.00	
8123.50†	29.020	176.988	6595.85	-4244.31	-4248.52	118.86	3188635.07	1280610.83	40.1016997	-104.8256606	10.00	
8223.50†	19.047	175.149	6687.07	-4284.81	-4289.11	121.52	3188637.73	1280570.24	40.1015882	-104.8256522	10.00	
8323.50†	9.130	169.516	6783.95	-4308.86	-4313.23	124.35	3188640.56	1280546.12	40.1015220	-104.8256427	10.00	

Planned Wellpath Report

LG EVERIST 05 PWP Rev-A.0
Page 4 of 8

REFERENCE WELLPATH IDENTIFICATION			
Operator	PETRO OPERATING CO, LLC	Well	LG EVERIST 05
Field	WELD COUNTY (NAD83/GRID)	API/Legal	
Facility	SEC.30-T02N-R66W	Wellbore	LG EVERIST 05 PWB
Slot	SLOT#05 LG EVERIST 05 (1092'FNL & 1134'FWL,SEC.30)		

WELLPATH DATA (198 stations) † = interpolated, ‡ = extrapolated station												
MD [ft]	Inclination [°]	Azimuth [°]	TVD [ft]	Vert Sect [ft]	North [ft]	East [ft]	Grid East [US ft]	Grid North [US ft]	Latitude	Longitude	DLS [°/100ft]	Comments
8423.50†	1.965	58.596	6883.54	-4315.71	-4320.15	127.27	3188643.48	1280539.20	40.1015029	-104.8256325	10.00	
8523.50†	11.150	8.558	6982.82	-4305.16	-4309.67	130.18	3188646.39	1280549.68	40.1015316	-104.8256218	10.00	
8623.50†	21.088	4.369	7078.77	-4277.53	-4282.11	132.99	3188649.20	1280577.25	40.1016072	-104.8256110	10.00	
8723.50†	31.065	2.800	7168.48	-4233.66	-4238.29	135.63	3188651.84	1280621.06	40.1017274	-104.8256003	10.00	
8823.50†	41.052	1.941	7249.21	-4174.88	-4179.55	138.01	3188654.22	1280679.80	40.1018886	-104.8255902	10.00	
8923.50†	51.044	1.371	7318.53	-4102.98	-4107.68	140.06	3188656.27	1280751.67	40.1020859	-104.8255810	10.00	
9023.50†	61.038	0.943	7374.32	-4020.14	-4024.86	141.71	3188657.92	1280834.49	40.1023132	-104.8255728	10.00	
9123.50†	71.033	0.591	7414.89	-3928.89	-3933.60	142.92	3188659.13	1280925.74	40.1025636	-104.8255660	10.00	
9223.50†	81.028	0.279	7439.00	-3831.98	-3836.68	143.65	3188659.86	1281022.65	40.1028297	-104.8255608	10.00	
9316.78	90.352	0.004	7446.00†	-3739.09	-3743.77	143.88	3188660.09	1281115.56	40.1030847	-104.8255574	10.00	LANDING
9323.50†	90.352	0.004	7445.96	-3732.37	-3737.05	143.88	3188660.09	1281122.28	40.1031031	-104.8255572	0.00	
9423.50†	90.352	0.004	7445.34	-3632.40	-3637.05	143.89	3188660.09	1281222.27	40.1033776	-104.8255545	0.00	
9523.50†	90.352	0.004	7444.73	-3532.44	-3537.05	143.89	3188660.10	1281322.27	40.1036521	-104.8255517	0.00	
9623.50†	90.352	0.004	7444.12	-3432.47	-3437.06	143.90	3188660.11	1281422.26	40.1039266	-104.8255490	0.00	
9723.50†	90.352	0.004	7443.50	-3332.50	-3337.06	143.91	3188660.11	1281522.25	40.1042011	-104.8255463	0.00	
9823.50†	90.352	0.004	7442.89	-3232.53	-3237.06	143.91	3188660.12	1281622.25	40.1044756	-104.8255435	0.00	
9923.50†	90.352	0.004	7442.27	-3132.57	-3137.06	143.92	3188660.13	1281722.24	40.1047501	-104.8255408	0.00	
10023.50†	90.352	0.004	7441.66	-3032.60	-3037.06	143.93	3188660.13	1281822.24	40.1050246	-104.8255380	0.00	
10123.50†	90.352	0.004	7441.05	-2932.63	-2937.07	143.93	3188660.14	1281922.23	40.1052991	-104.8255353	0.00	
10223.50†	90.352	0.004	7440.43	-2832.66	-2837.07	143.94	3188660.15	1282022.22	40.1055736	-104.8255325	0.00	
10323.50†	90.352	0.004	7439.82	-2732.69	-2737.07	143.95	3188660.15	1282122.22	40.1058481	-104.8255298	0.00	
10423.50†	90.352	0.004	7439.21	-2632.73	-2637.07	143.95	3188660.16	1282222.21	40.1061225	-104.8255271	0.00	
10523.50†	90.352	0.004	7438.59	-2532.76	-2537.07	143.96	3188660.17	1282322.21	40.1063970	-104.8255243	0.00	
10623.50†	90.352	0.004	7437.98	-2432.79	-2437.07	143.97	3188660.17	1282422.20	40.1066715	-104.8255216	0.00	
10723.50†	90.352	0.004	7437.36	-2332.82	-2337.08	143.97	3188660.18	1282522.19	40.1069460	-104.8255188	0.00	
10823.50†	90.352	0.004	7436.75	-2232.85	-2237.08	143.98	3188660.19	1282622.19	40.1072205	-104.8255161	0.00	
10923.50†	90.352	0.004	7436.14	-2132.89	-2137.08	143.99	3188660.19	1282722.18	40.1074950	-104.8255133	0.00	
11023.50†	90.352	0.004	7435.52	-2032.92	-2037.08	143.99	3188660.20	1282822.17	40.1077695	-104.8255106	0.00	
11123.50†	90.352	0.004	7434.91	-1932.95	-1937.08	144.00	3188660.21	1282922.17	40.1080440	-104.8255079	0.00	
11223.50†	90.352	0.004	7434.29	-1832.98	-1837.09	144.01	3188660.21	1283022.16	40.1083185	-104.8255051	0.00	
11323.50†	90.352	0.004	7433.68	-1733.01	-1737.09	144.01	3188660.22	1283122.16	40.1085930	-104.8255024	0.00	
11423.50†	90.352	0.004	7433.07	-1633.05	-1637.09	144.02	3188660.23	1283222.15	40.1088674	-104.8254996	0.00	
11523.50†	90.352	0.004	7432.45	-1533.08	-1537.09	144.03	3188660.23	1283322.14	40.1091419	-104.8254969	0.00	
11623.50†	90.352	0.004	7431.84	-1433.11	-1437.09	144.03	3188660.24	1283422.14	40.1094164	-104.8254941	0.00	
11723.50†	90.352	0.004	7431.22	-1333.14	-1337.10	144.04	3188660.25	1283522.13	40.1096909	-104.8254914	0.00	
11823.50†	90.352	0.004	7430.61	-1233.17	-1237.10	144.05	3188660.25	1283622.13	40.1099654	-104.8254887	0.00	
11923.50†	90.352	0.004	7430.00	-1133.21	-1137.10	144.05	3188660.26	1283722.12	40.1102399	-104.8254859	0.00	
12023.50†	90.352	0.004	7429.38	-1033.24	-1037.10	144.06	3188660.27	1283822.11	40.1105144	-104.8254832	0.00	
12123.50†	90.352	0.004	7428.77	-933.27	-937.10	144.07	3188660.27	1283922.11	40.1107889	-104.8254804	0.00	
12223.50†	90.352	0.004	7428.15	-833.30	-837.10	144.07	3188660.28	1284022.10	40.1110634	-104.8254777	0.00	
12323.50†	90.352	0.004	7427.54	-733.33	-737.11	144.08	3188660.29	1284122.10	40.1113379	-104.8254749	0.00	
12423.50†	90.352	0.004	7426.93	-633.37	-637.11	144.09	3188660.29	1284222.09	40.1116124	-104.8254722	0.00	
12523.50†	90.352	0.004	7426.31	-533.40	-537.11	144.09	3188660.30	1284322.08	40.1118868	-104.8254695	0.00	
12623.50†	90.352	0.004	7425.70	-433.43	-437.11	144.10	3188660.31	1284422.08	40.1121613	-104.8254667	0.00	
12723.50†	90.352	0.004	7425.08	-333.46	-337.11	144.11	3188660.31	1284522.07	40.1124358	-104.8254640	0.00	

Planned Wellpath Report

LG EVERIST 05 PWP Rev-A.0
Page 5 of 8

REFERENCE WELLPATH IDENTIFICATION			
Operator	PETRO OPERATING CO, LLC	Well	LG EVERIST 05
Field	WELD COUNTY (NAD83/GRID)	API/Legal	
Facility	SEC.30-T02N-R66W	Wellbore	LG EVERIST 05 PWB
Slot	SLOT#05 LG EVERIST 05 (1092'FNL & 1134'FWL,SEC.30)		

WELLPATH DATA (198 stations) † = interpolated, ‡ = extrapolated station												
MD [ft]	Inclination [°]	Azimuth [°]	TVD [ft]	Vert Sect [ft]	North [ft]	East [ft]	Grid East [US ft]	Grid North [US ft]	Latitude	Longitude	DLS [°/100ft]	Comments
12823.50†	90.352	0.004	7424.47	-233.49	-237.12	144.11	3188660.32	1284622.06	40.1127103	-104.8254612	0.00	
12923.50†	90.352	0.004	7423.86	-133.53	-137.12	144.12	3188660.33	1284722.06	40.1129848	-104.8254585	0.00	
13023.50†	90.352	0.004	7423.24	-33.56	-37.12	144.13	3188660.33	1284822.05	40.1132593	-104.8254557	0.00	
13123.50†	90.352	0.004	7422.63	66.41	62.88	144.13	3188660.34	1284922.05	40.1135338	-104.8254530	0.00	
13223.50†	90.352	0.004	7422.01	166.38	162.88	144.14	3188660.35	1285022.04	40.1138083	-104.8254503	0.00	
13323.50†	90.352	0.004	7421.40	266.34	262.87	144.15	3188660.35	1285122.03	40.1140828	-104.8254475	0.00	
13423.50†	90.352	0.004	7420.79	366.31	362.87	144.15	3188660.36	1285222.03	40.1143573	-104.8254448	0.00	
13523.50†	90.352	0.004	7420.17	466.28	462.87	144.16	3188660.37	1285322.02	40.1146317	-104.8254420	0.00	
13623.50†	90.352	0.004	7419.56	566.25	562.87	144.17	3188660.37	1285422.02	40.1149062	-104.8254393	0.00	
13723.50†	90.352	0.004	7418.94	666.22	662.87	144.17	3188660.38	1285522.01	40.1151807	-104.8254365	0.00	
13823.50†	90.352	0.004	7418.33	766.18	762.87	144.18	3188660.39	1285622.00	40.1154552	-104.8254338	0.00	
13923.50†	90.352	0.004	7417.72	866.15	862.86	144.18	3188660.39	1285722.00	40.1157297	-104.8254310	0.00	
14023.50†	90.352	0.004	7417.10	966.12	962.86	144.19	3188660.40	1285821.99	40.1160042	-104.8254283	0.00	
14123.50†	90.352	0.004	7416.49	1066.09	1062.86	144.20	3188660.41	1285921.99	40.1162787	-104.8254256	0.00	
14223.50†	90.352	0.004	7415.87	1166.06	1162.86	144.20	3188660.41	1286021.98	40.1165532	-104.8254228	0.00	
14323.50†	90.352	0.004	7415.26	1266.02	1262.86	144.21	3188660.42	1286121.97	40.1168277	-104.8254201	0.00	
14423.50†	90.352	0.004	7414.65	1365.99	1362.85	144.22	3188660.43	1286221.97	40.1171022	-104.8254173	0.00	
14523.50†	90.352	0.004	7414.03	1465.96	1462.85	144.22	3188660.43	1286321.96	40.1173766	-104.8254146	0.00	
14623.50†	90.352	0.004	7413.42	1565.93	1562.85	144.23	3188660.44	1286421.95	40.1176511	-104.8254118	0.00	
14723.50†	90.352	0.004	7412.81	1665.90	1662.85	144.24	3188660.45	1286521.95	40.1179256	-104.8254091	0.00	
14823.50†	90.352	0.004	7412.19	1765.86	1762.85	144.24	3188660.45	1286621.94	40.1182001	-104.8254064	0.00	
14923.50†	90.352	0.004	7411.58	1865.83	1862.84	144.25	3188660.46	1286721.94	40.1184746	-104.8254036	0.00	
15023.50†	90.352	0.004	7410.96	1965.80	1962.84	144.26	3188660.47	1286821.93	40.1187491	-104.8254009	0.00	
15123.50†	90.352	0.004	7410.35	2065.77	2062.84	144.26	3188660.47	1286921.92	40.1190236	-104.8253981	0.00	
15223.50†	90.352	0.004	7409.74	2165.74	2162.84	144.27	3188660.48	1287021.92	40.1192981	-104.8253954	0.00	
15323.50†	90.352	0.004	7409.12	2265.70	2262.84	144.28	3188660.49	1287121.91	40.1195726	-104.8253926	0.00	
15423.50†	90.352	0.004	7408.51	2365.67	2362.83	144.28	3188660.49	1287221.91	40.1198471	-104.8253899	0.00	
15523.50†	90.352	0.004	7407.89	2465.64	2462.83	144.29	3188660.50	1287321.90	40.1201215	-104.8253871	0.00	
15623.50†	90.352	0.004	7407.28	2565.61	2562.83	144.30	3188660.50	1287421.89	40.1203960	-104.8253844	0.00	
15723.50†	90.352	0.004	7406.67	2665.58	2662.83	144.30	3188660.51	1287521.89	40.1206705	-104.8253817	0.00	
15823.50†	90.352	0.004	7406.05	2765.54	2762.83	144.31	3188660.52	1287621.88	40.1209450	-104.8253789	0.00	
15923.50†	90.352	0.004	7405.44	2865.51	2862.83	144.32	3188660.52	1287721.88	40.1212195	-104.8253762	0.00	
16023.50†	90.352	0.004	7404.82	2965.48	2962.82	144.32	3188660.53	1287821.87	40.1214940	-104.8253734	0.00	
16123.50†	90.352	0.004	7404.21	3065.45	3062.82	144.33	3188660.54	1287921.86	40.1217685	-104.8253707	0.00	
16223.50†	90.352	0.004	7403.60	3165.42	3162.82	144.34	3188660.54	1288021.86	40.1220430	-104.8253679	0.00	
16323.50†	90.352	0.004	7402.98	3265.38	3262.82	144.34	3188660.55	1288121.85	40.1223175	-104.8253652	0.00	
16423.50†	90.352	0.004	7402.37	3365.35	3362.82	144.35	3188660.56	1288221.84	40.1225920	-104.8253625	0.00	
16523.50†	90.352	0.004	7401.75	3465.32	3462.81	144.36	3188660.56	1288321.84	40.1228664	-104.8253597	0.00	
16623.50†	90.352	0.004	7401.14	3565.29	3562.81	144.36	3188660.57	1288421.83	40.1231409	-104.8253570	0.00	
16723.50†	90.352	0.004	7400.53	3665.26	3662.81	144.37	3188660.58	1288521.83	40.1234154	-104.8253542	0.00	
16823.50†	90.352	0.004	7399.91	3765.22	3762.81	144.38	3188660.58	1288621.82	40.1236899	-104.8253515	0.00	
16923.50†	90.352	0.004	7399.30	3865.19	3862.81	144.38	3188660.59	1288721.81	40.1239644	-104.8253487	0.00	
17023.50†	90.352	0.004	7398.68	3965.16	3962.80	144.39	3188660.60	1288821.81	40.1242389	-104.8253460	0.00	
17123.50†	90.352	0.004	7398.07	4065.13	4062.80	144.40	3188660.60	1288921.80	40.1245134	-104.8253432	0.00	
17223.50†	90.352	0.004	7397.46	4165.09	4162.80	144.40	3188660.61	1289021.80	40.1247879	-104.8253405	0.00	

Planned Wellpath Report

LG EVERIST 05 PWP Rev-A.0

Page 6 of 8

REFERENCE WELLPATH IDENTIFICATION

Operator	PETRO OPERATING CO, LLC	Well	LG EVERIST 05
Field	WELD COUNTY (NAD83/GRID)	API/Legal	
Facility	SEC.30-T02N-R66W	Wellbore	LG EVERIST 05 PWB
Slot	SLOT#05 LG EVERIST 05 (1092'FNL & 1134'FWL,SEC.30)		

WELLPATH DATA (198 stations) † = interpolated, ‡ = extrapolated station

MD [ft]	Inclination [°]	Azimuth [°]	TVD [ft]	Vert Sect [ft]	North [ft]	East [ft]	Grid East [US ft]	Grid North [US ft]	Latitude	Longitude	DLS [°/100ft]	Comments
17323.50†	90.352	0.004	7396.84	4265.06	4262.80	144.41	3188660.62	1289121.79	40.1250624	-104.8253378	0.00	
17423.50†	90.352	0.004	7396.23	4365.03	4362.80	144.42	3188660.62	1289221.78	40.1253369	-104.8253350	0.00	
17523.50†	90.352	0.004	7395.61	4465.00	4462.80	144.42	3188660.63	1289321.78	40.1256113	-104.8253323	0.00	
17623.50†	90.352	0.004	7395.00	4564.97	4562.79	144.43	3188660.64	1289421.77	40.1258858	-104.8253295	0.00	
17723.50†	90.352	0.004	7394.39	4664.93	4662.79	144.44	3188660.64	1289521.77	40.1261603	-104.8253268	0.00	
17823.50†	90.352	0.004	7393.77	4764.90	4762.79	144.44	3188660.65	1289621.76	40.1264348	-104.8253240	0.00	
17923.50†	90.352	0.004	7393.16	4864.87	4862.79	144.45	3188660.66	1289721.75	40.1267093	-104.8253213	0.00	
18023.50†	90.352	0.004	7392.54	4964.84	4962.79	144.46	3188660.66	1289821.75	40.1269838	-104.8253185	0.00	
18123.50†	90.352	0.004	7391.93	5064.81	5062.78	144.46	3188660.67	1289921.74	40.1272583	-104.8253158	0.00	
18223.50†	90.352	0.004	7391.32	5164.77	5162.78	144.47	3188660.68	1290021.73	40.1275328	-104.8253131	0.00	
18323.50†	90.352	0.004	7390.70	5264.74	5262.78	144.48	3188660.68	1290121.73	40.1278073	-104.8253103	0.00	
18423.50†	90.352	0.004	7390.09	5364.71	5362.78	144.48	3188660.69	1290221.72	40.1280818	-104.8253076	0.00	
18523.50†	90.352	0.004	7389.47	5464.68	5462.78	144.49	3188660.70	1290321.72	40.1283562	-104.8253048	0.00	
18623.50†	90.352	0.004	7388.86	5564.65	5562.77	144.50	3188660.70	1290421.71	40.1286307	-104.8253021	0.00	
18723.50†	90.352	0.004	7388.25	5664.61	5662.77	144.50	3188660.71	1290521.70	40.1289052	-104.8252993	0.00	
18823.50†	90.352	0.004	7387.63	5764.58	5762.77	144.51	3188660.72	1290621.70	40.1291797	-104.8252966	0.00	
18923.50†	90.352	0.004	7387.02	5864.55	5862.77	144.52	3188660.72	1290721.69	40.1294542	-104.8252938	0.00	
18926.62	90.352	0.004	7387.00‡	5867.67	5865.89	144.52	3188660.72	1290724.82	40.1294628	-104.8252938	0.00	TD

HOLE & CASING SECTIONS

- Ref Wellbore: LG EVERIST 05 PWB Ref Wellpath: LG EVERIST 05 PWP Rev-A.0

String/Diameter	Start MD [ft]	End MD [ft]	Interval [ft]	Start TVD [ft]	End TVD [ft]	Start N/S [ft]	Start E/W [ft]	End N/S [ft]	End E/W [ft]
9.625in Casing Surface	23.50	1838.59	1815.09	23.50	1810.00	0.00	0.00	-249.95	0.00

Planned Wellpath Report

LG EVERIST 05 PWP Rev-A.0

Page 7 of 8

REFERENCE WELLPATH IDENTIFICATION

Operator	PETRO OPERATING CO, LLC	Well	LG EVERIST 05
Field	WELD COUNTY (NAD83/GRID)	API/Legal	
Facility	SEC.30-T02N-R66W	Wellbore	LG EVERIST 05 PWB
Slot	SLOT#05 LG EVERIST 05 (1092'FNL & 1134'FWL,SEC.30)		

TARGETS

Name	MD [ft]	TVD [ft]	North [ft]	East [ft]	Grid East [US ft]	Grid North [US ft]	Latitude	Longitude	Shape
SEC.19-T02N-R66W	N/A	0.00	-52.16	29.59	3188545.81	1284807.01	40.1132204	-104.8258656	polygon
2D Polygon: dimensions not calculated									
SEC.19/30-T02N-R66W (SB 460')	N/A	0.00	-52.16	29.59	3188545.81	1284807.01	40.1132204	-104.8258656	polygon
2D Polygon: dimensions not calculated									
SEC.30-T02N-R66W	N/A	0.00	-52.16	29.59	3188545.81	1284807.01	40.1132204	-104.8258656	polygon
2D Polygon: dimensions not calculated									
2) LG EVERIST 05 BHL REV-1 (464'FNL & 1295'FWL,SEC.19)	18926.62	7387.00	5865.89	144.52	3188660.73	1290724.81	40.1294628	-104.8252938	point
1) LG EVERIST 05 LP REV-1 (460'FSL & 1241'FWL,SEC.30)	9316.78	7446.00	-3743.77	143.88	3188660.09	1281115.56	40.1030847	-104.8255574	point

SURVEY PROGRAM - Ref Wellbore: LG EVERIST 05 PWB Ref Wellpath: LG EVERIST 05 PWP Rev-A.0

Start MD [ft]	End MD [ft]	Positional Uncertainty Model	Log Name/Comment	Wellbore
23.50	1838.59	BH NaviTrak (2019) (Axial+IFR1+SAG)		LG EVERIST 05 PWB
1838.59	18926.62	BH AutoTrak Curve/eXpress (2019) (IFR1, SAG, Short spacing)		LG EVERIST 05 PWB

Planned Wellpath Report

LG EVERIST 05 PWP Rev-A.0
Page 8 of 8

REFERENCE WELLPATH IDENTIFICATION			
Operator	PETRO OPERATING CO, LLC	Well	LG EVERIST 05
Field	WELD COUNTY (NAD83/GRID)	API/Legal	
Facility	SEC.30-T02N-R66W	Wellbore	LG EVERIST 05 PWB
Slot	SLOT#05 LG EVERIST 05 (1092'FNL & 1134'FWL,SEC.30)		

DESIGN COMMENTS				
MD [ft]	Inclination [°]	Azimuth [°]	TVD [ft]	Comment
23.50	0.000	180.000	23.50	Tie On
500.00	0.000	180.000	500.00	End of Tangent
1250.00	15.000	180.000	1241.46	End of Build (J)
1838.59	15.000	180.000	1810.00	End of Tangent (J)
3247.71	43.172	178.225	3029.07	Build (XS)
7981.80	43.172	178.225	6481.64	KOP
9316.78	90.352	0.004	7446.00	LANDING
18926.62	90.352	0.004	7387.00	TD