



# DUAL INDUCTION

MIDWEST WIRELINE

CompanyDesert Eagle Operating	
Well	Red Rocks #35-08
Field	
County	Las Animas
State	Colorado
Company Desert Eagle Operating	
Well	Red Rocks #35-08
Field	
County	Las Animas
State	Colorado
Location:	API # : 05-071-09929-00-00
NW/SE	
1667 FSL & 1478 FEL	
Permanent Datum	SEC 1 TWP 29S RGE 55W
Log Measured From	Ground Level
Drilling Measured From	Ground Level
Elevation	5563
Other Services	SWN/CDL
K.B.	Elevation
D.F.	
G.L.	5563
Date	10/27/2023
Run Number	One
Depth Driller	1113
Depth Logger	1107
Bottom Logged Interval	1106
Top Log Interval	00
Casing Driller	9.625 @ 1020
Casing Logger	1018
Bit Size	8.75
Type Fluid in Hole	Air
Salinity ,ppm CL	
Density / Viscosity	
pH / Fluid Loss	
Source of Sample	Flowline
Rm @ Meas. Temp	@
Rmf @ Meas. Temp	@
Rmc @ Meas. Temp	@
Source of Rmf / Rmc	Charts
Rm @ BHT	@
Operating Rig Time	1.5 Hour
Max Rec. Temp. F	
Equipment Number	P-24
Location	Hays
Recorded By	T. Martin
Witnessed By	Brandon Parks

<<< Fold Here >>>

All interpretations are opinions based on inferences from electrical or other measurements and Midwest Wireline LLC cannot and does not guarantee the accuracy or correctness of any interpretation, and Midwest Wireline LLC will not be liable or responsible for any loss, costs, damages, or expenses incurred or sustained by anyone resulting from any interpretation made by any of our officers, agents or employees.

## Comments

N/A DENOTES NOT AVAILABLE OR NON-APPLICABLE.

Log Measured From: Ground Level

0 Ft. Above Permanent Datum

THANK YOU FOR USING MIDWEST WIRELINE LLC  
785-625-3858

## Your Midwest Wireline Crew

Engineer: T. Martin  
Operator:  
Operator:  
Operator:

## This Log Record Was Witnessed By

Primary Witness: Brandon Parks  
Secondary Witness:  
Secondary Witness:  
Secondary Witness:



# Log Variables

DatabaseC:\ProgramData\Warrior\Data\desert eagle\_red rocks #35-08.db  
Dataset field/well/DIL/pass2.1/\_vars\_

## Top - Bottom

BOREID in 8.75	BOTTEMP degF 100	CASEOD in 7	CASETHCK in 0	PERFS No	SNDERR mmho/m 4	SNDERRM mmho/m 1.75	SPSHIFT mV 0
SRFTEMP degF 50	TDEPTH ft 0						

## Variable Description

BOREID : Borehole I.D.  
BOTTEMP : Bottom Hole Temperature  
CASEOD : Casing O.D.  
CASETHCK : Casing Thickness  
PERFS : Perforation Flag

SNDERR : Deep Sonde Error Correction  
SNDERRM : Medium Sonde Error Correction  
SPSHIFT : S.P. Baseline Offset  
SRFTEMP : Surface Temperature  
TDEPTH : Total Depth



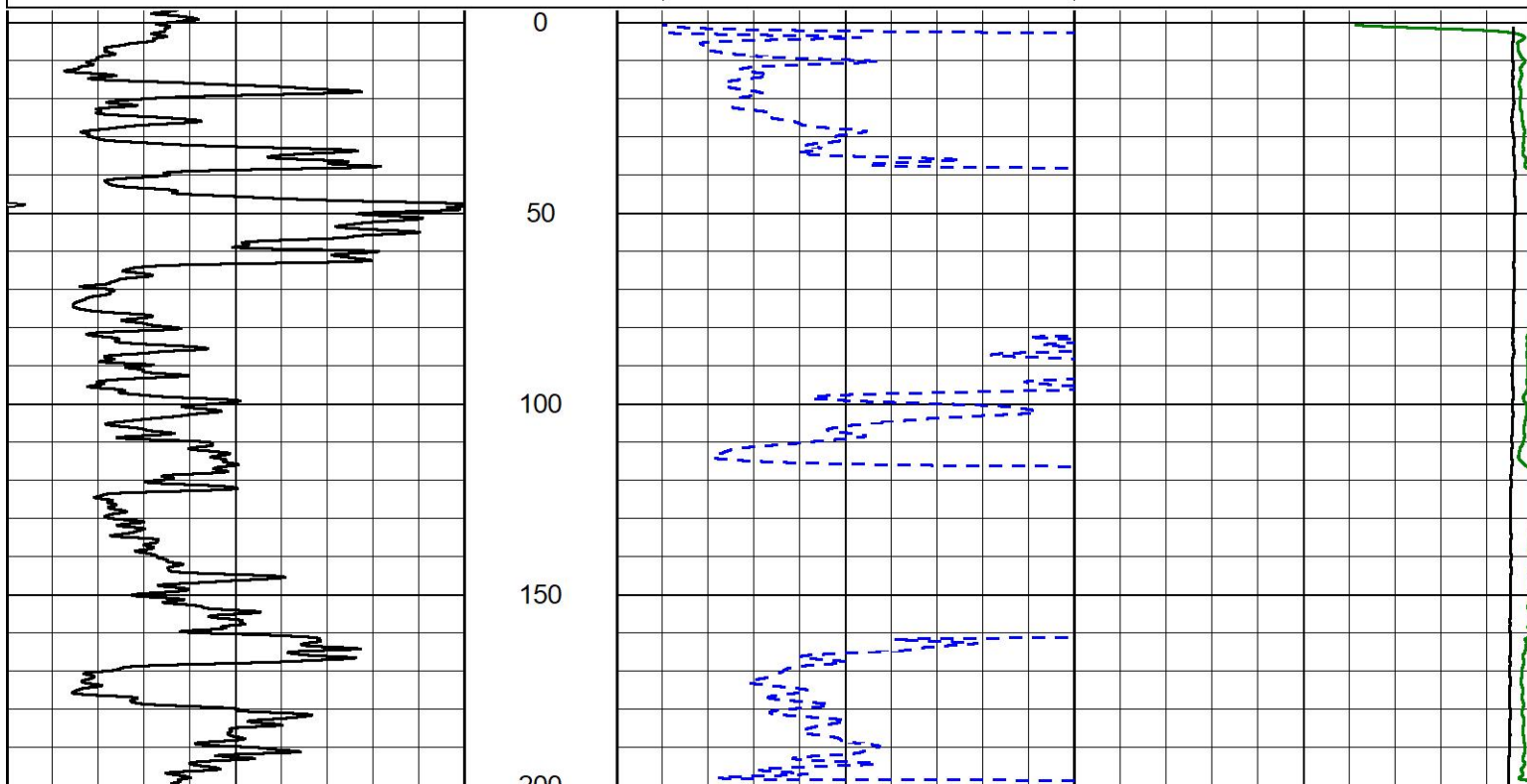
MIDWEST WIRELINE

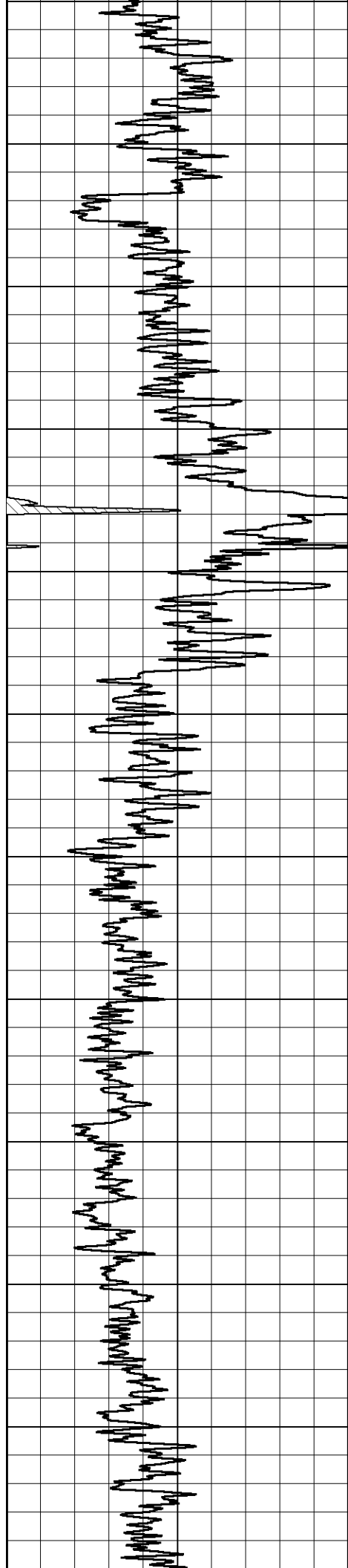
## DETAIL SECTION

### MAIN PASS

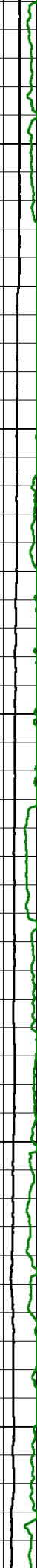
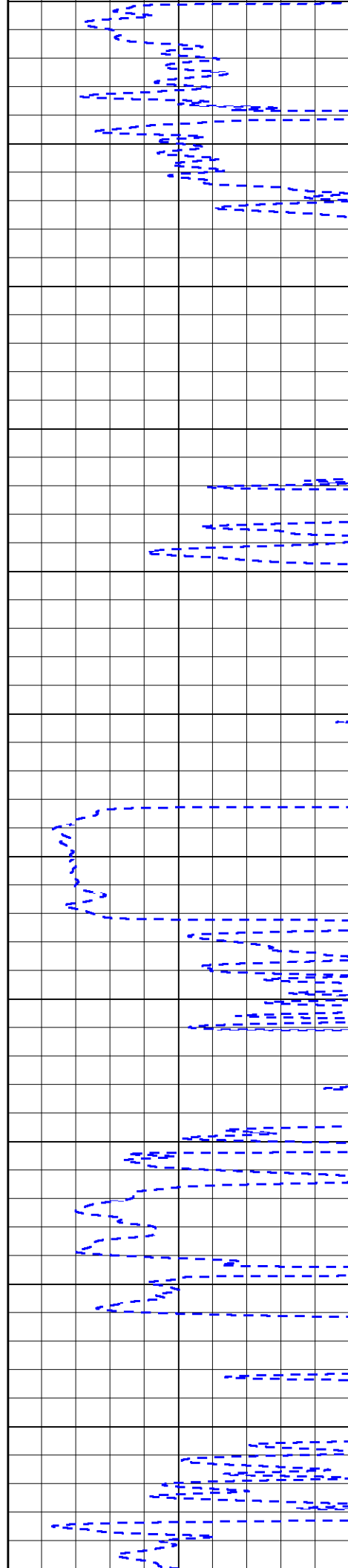
Database File desert eagle\_red rocks #35-08.db  
Dataset Pathname DIL/pass2.1  
Presentation Format \_dil2in  
Dataset Creation Fri Oct 27 17:40:18 2023  
Charted by Depth in Feet scaled 1:600

0	Gamma Ray (GAPI)	150	1000	Conductivity (mmho/m)	0
			15000	Line Tension (lb)	0
			0	Deep Resistivity (Ohm-m)	50
			50	Deep Resistivity (Ohm-m)	200

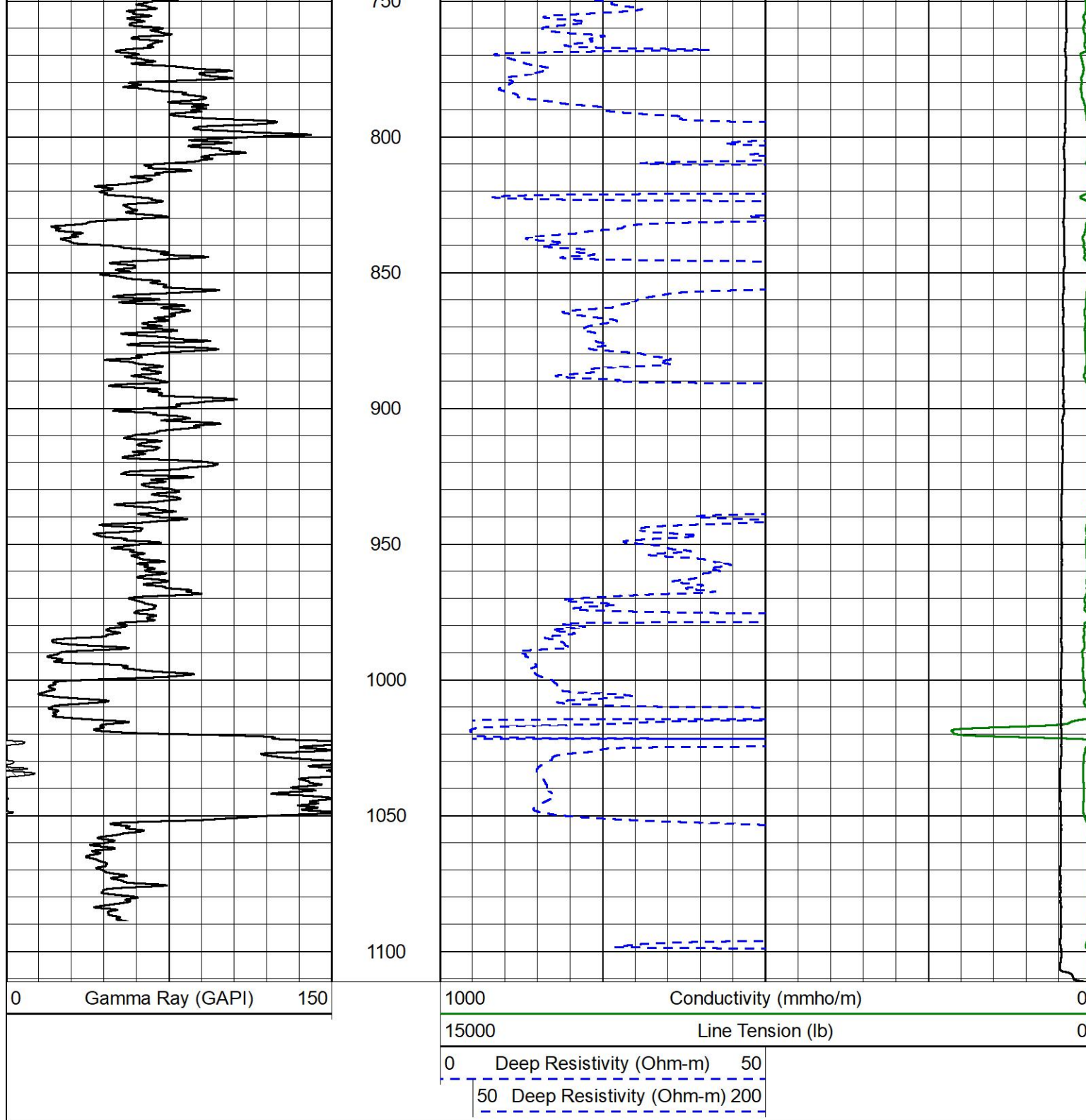




200  
250  
300  
350  
400  
450  
500  
550  
600  
650  
700  
750







## DETAIL SECTION

### MAIN PASS

Database File desert eagle\_red rocks #35-08.db  
 Dataset Pathname DIL/pass2.1  
 Presentation Format \_dil  
 Dataset Creation Fri Oct 27 17:40:18 2023  
 Charted by Depth in Feet scaled 1:240



10000

Line Tension (lb)

0

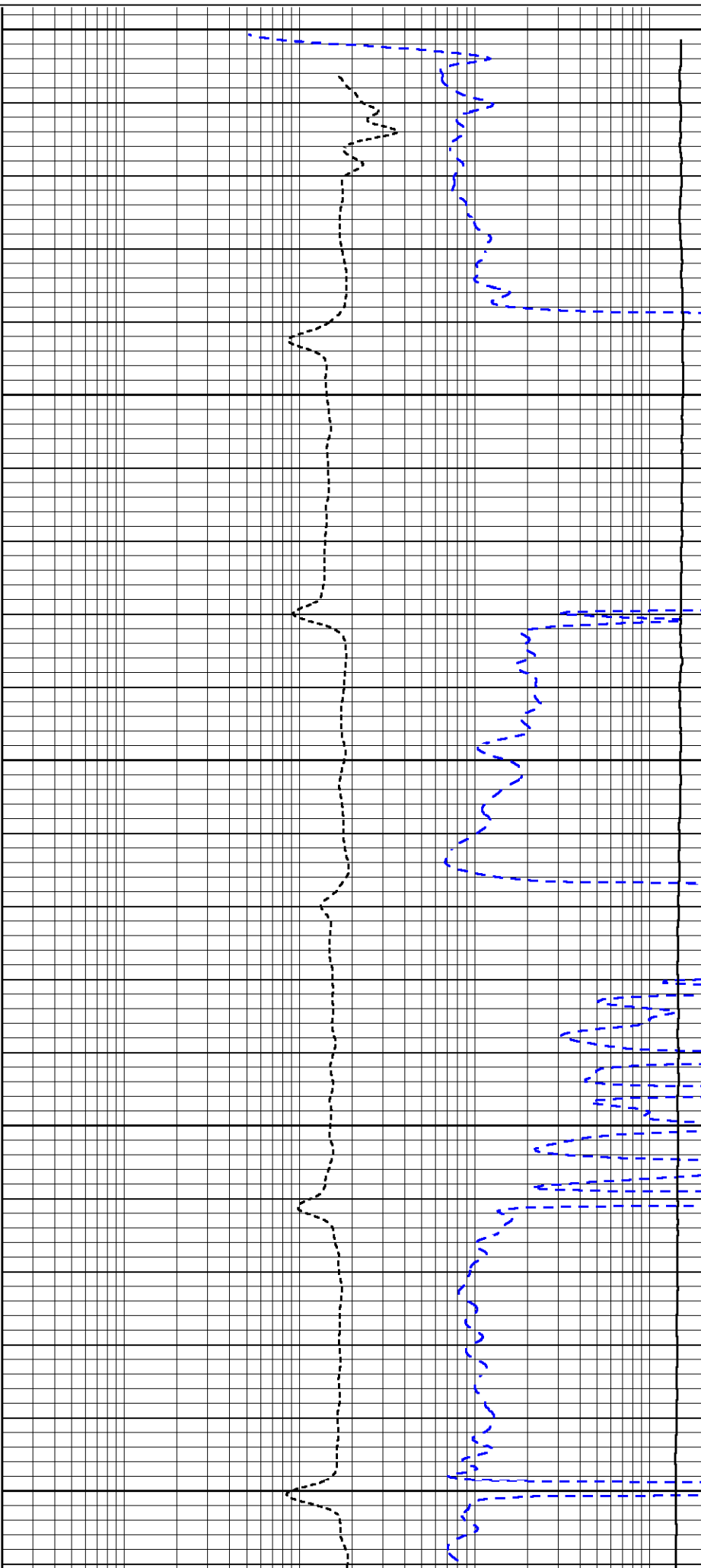
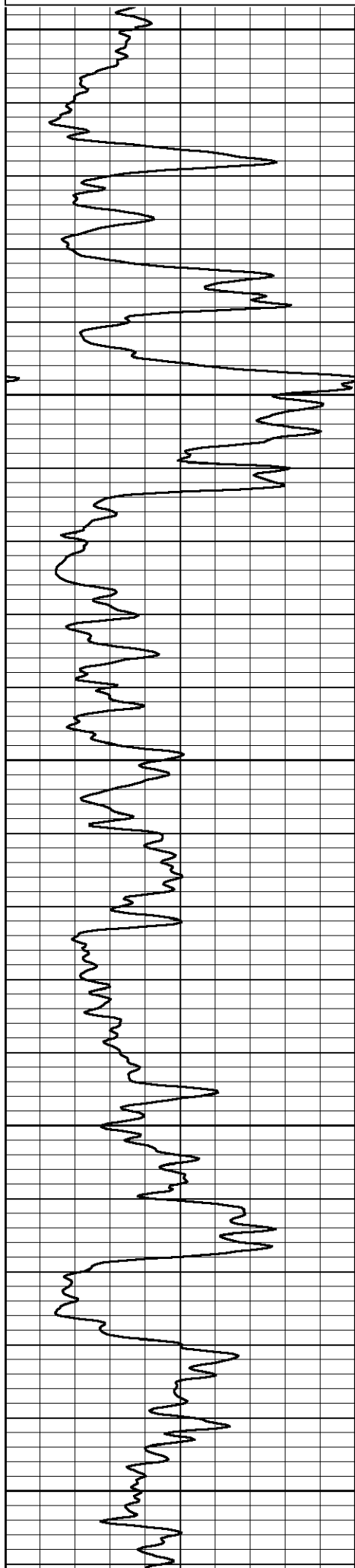
0

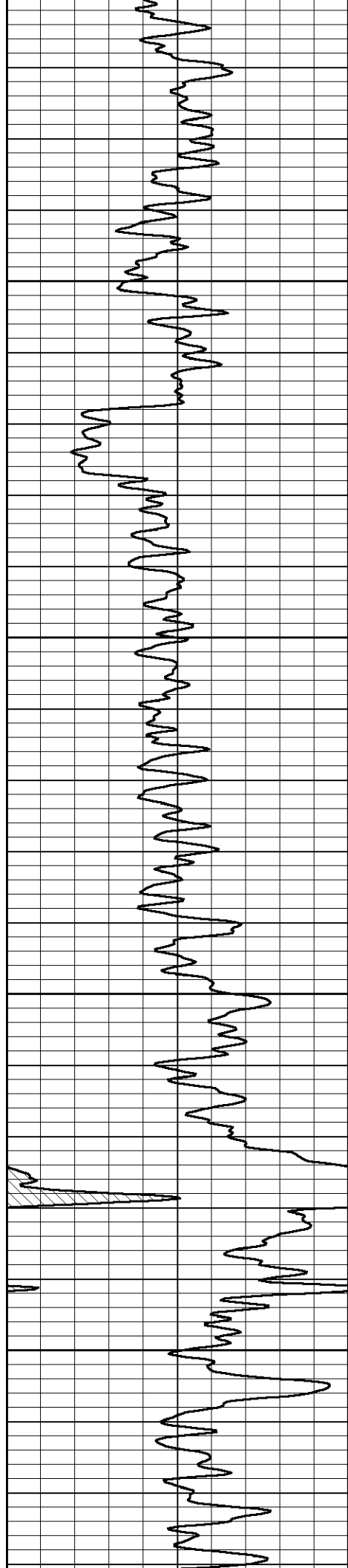
50

100

150

200



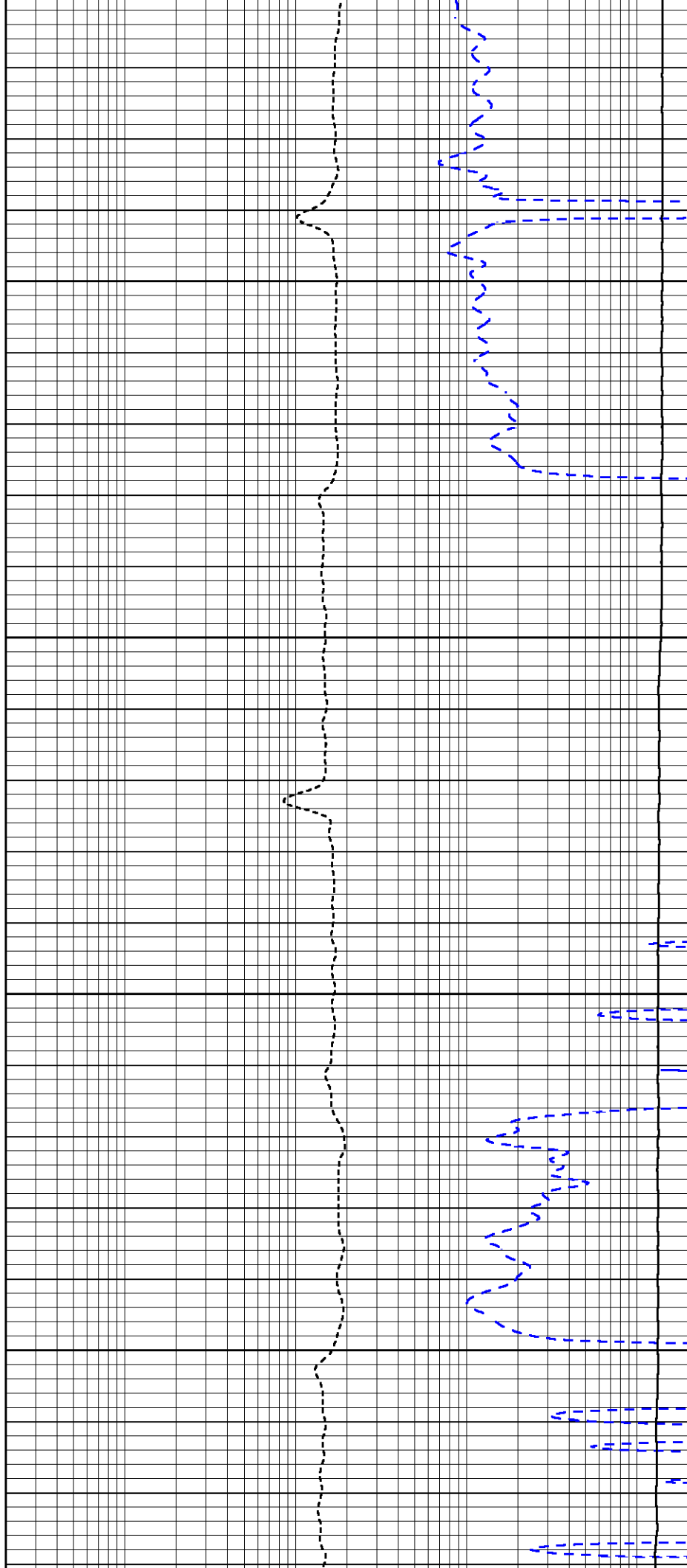


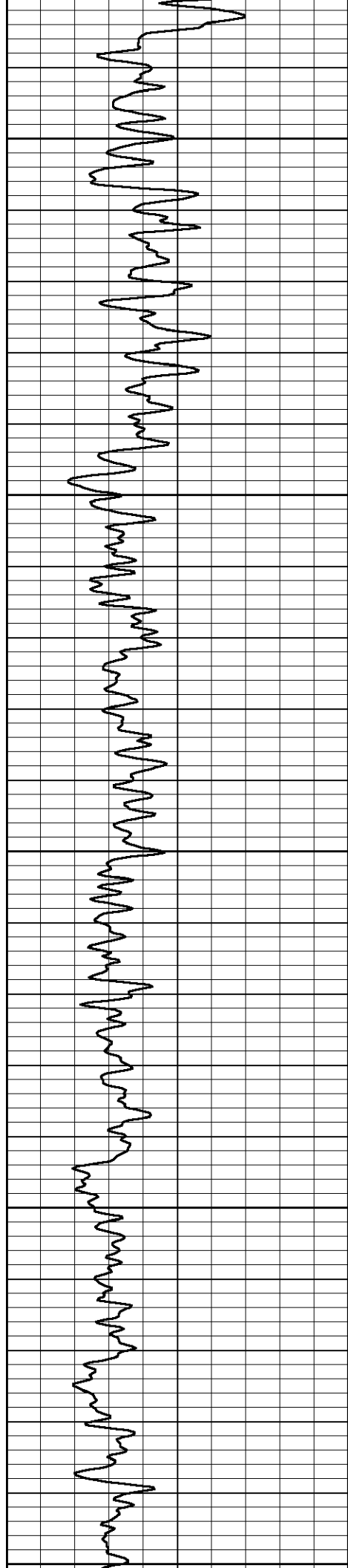
250

300

350

400





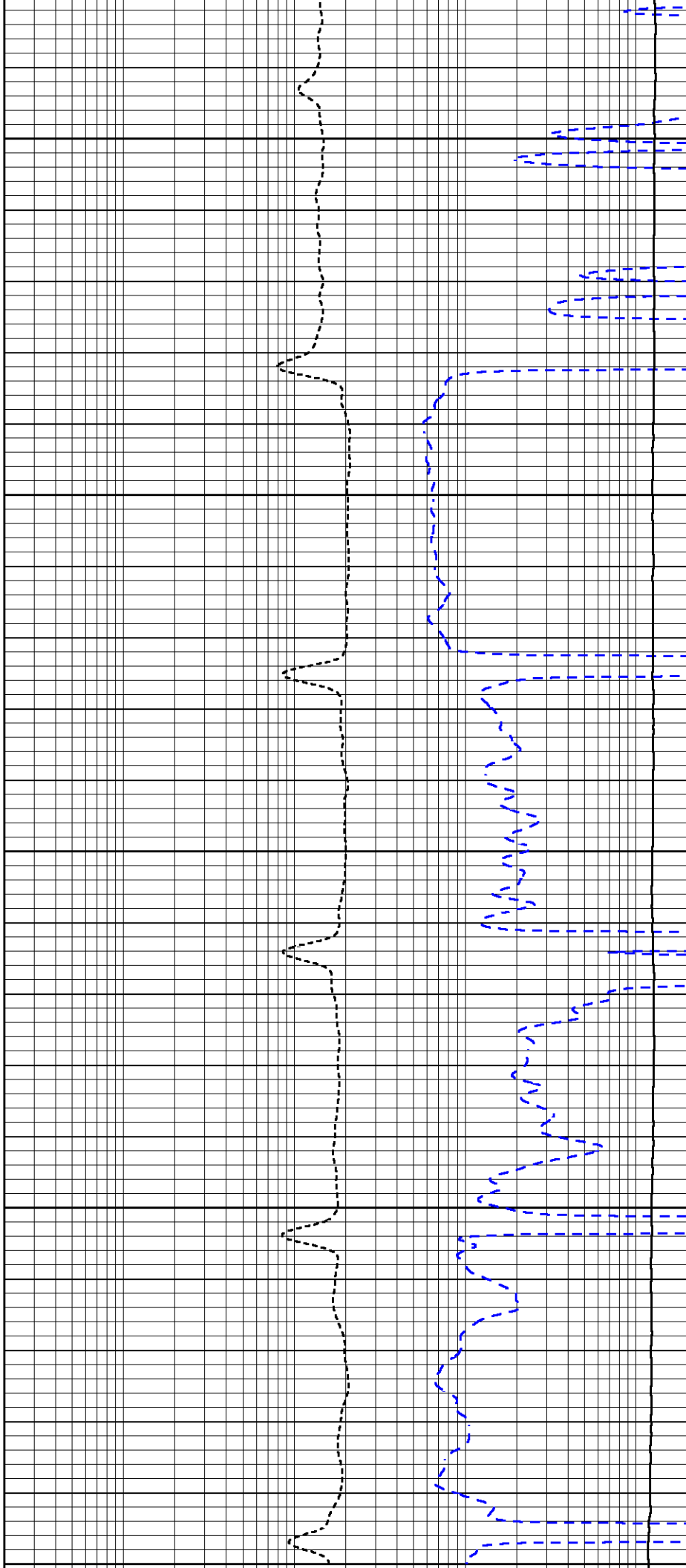
450

500

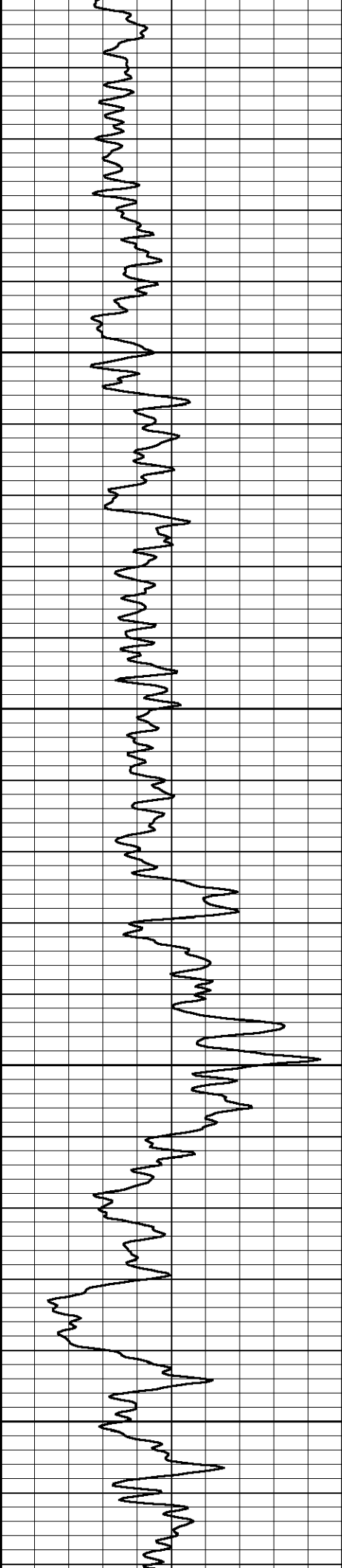
550

600

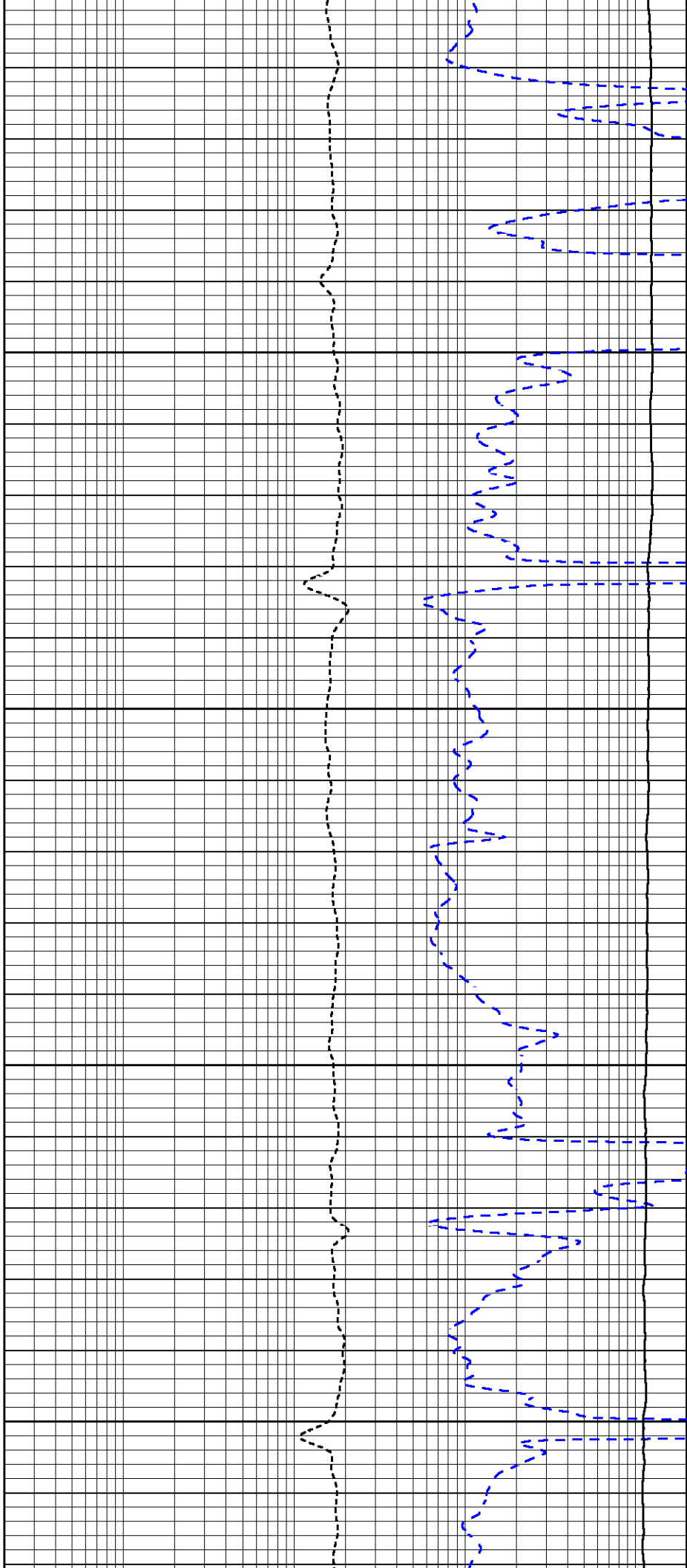
650

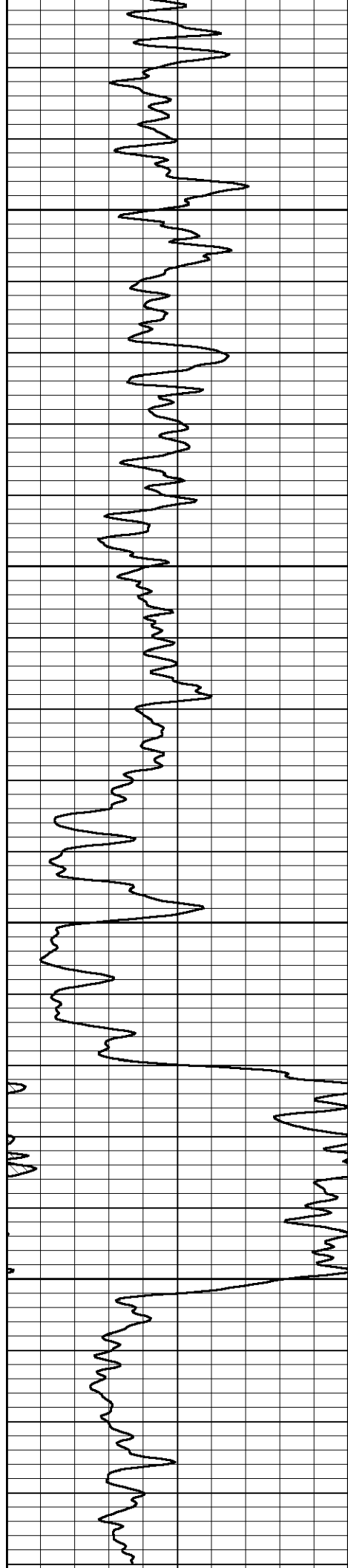






800  
700  
800  
850



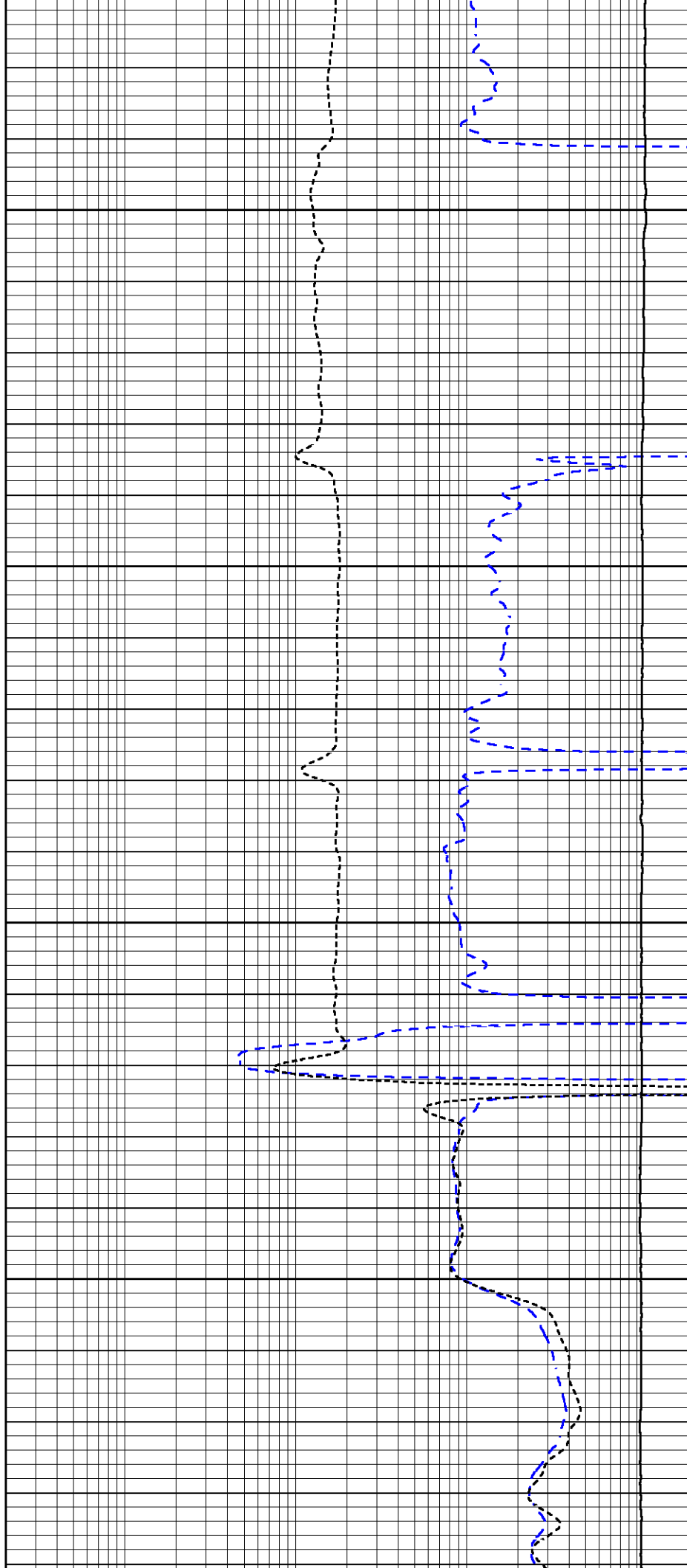


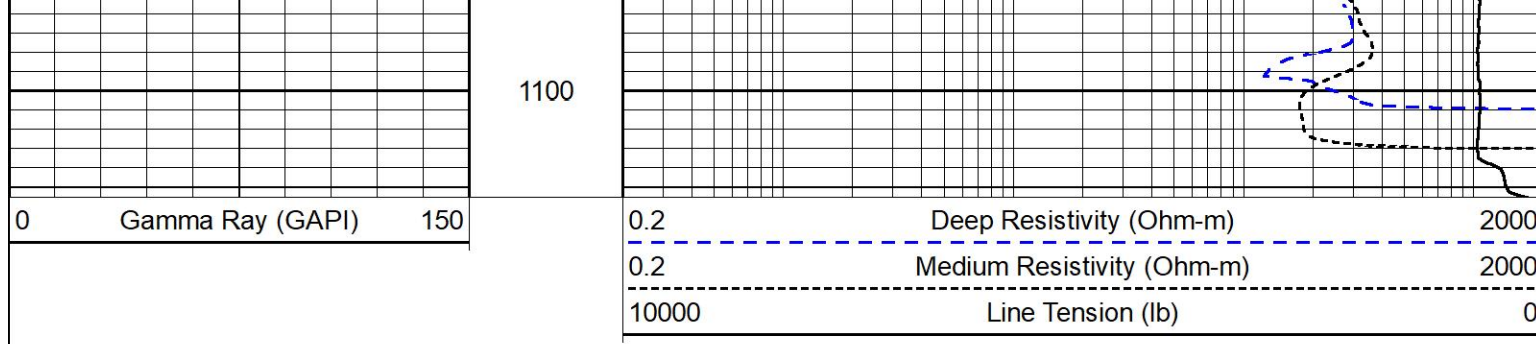
900

950

1000

1050





Calibration Report	
Database File	desert eagle_red rocks #35-08.db
Dataset Pathname	DIL/pass2.1
Dataset Creation	Fri Oct 27 17:40:18 2023

### Dual Induction Calibration Report

Serial-Model:	502 HT-M&W
Surface Cal Performed:	

		Readings		References		Results	
Loop:	Air	Loop	Air	Loop		m	b
Deep	83.639	487.104	0.000	255.800	mmho/m	0.454	-35.000
Medium	113.335	1585.690	0.000	255.800	mmho/m	0.340	-14.000

### Gamma Ray Calibration Report

Serial Number:	102
Tool Model:	M&W
Performed:	Mon Sep 25 22:02:33 2023
Calibrator Value:	1.0
Background Reading:	0.0
Calibrator Reading:	1.0
Sensitivity:	0.5250

 MIDWEST WIRELINE	Company	Desert Eagle Operating
	Well	Red Rocks #35-08
	Field	
	County	Las Animas
	State	Colorado