

Sensor	Offset (ft)	Schematic	Description	Length (ft)	O.D. (in)	Weight (lb)
GR	15.50		GR-M&W (102)	3.00	3.50	50.00
LGRD	11.00		LGRD-M&W (177) Simlec Long Guard	4.00	3.50	40.00
SCAL	5.10		SWN-M&W-SP (702)	10.50	4.00	190.00
SWN	4.45					
SP	0.20					

Dataset:
desert eagle_red rocks #35-08.db: field/well/SWN/pass2.1

Total length:
17.50 ft

Total weight:
280.00 lb

O.D.:
4.00 in

Log Variables

DatabaseC:\ProgramData\Warrior\Data\desert eagle_red rocks #35-08.db
Dataset field/well/CDL/pass2.1/_vars_

Top - Bottom

BOREID in 8.75	BOTTEMP degF 100	CASEOD in 7	CASETHCK in 0	FLUIDDEN g/cc 0	MATRXDEN g/cc 2.68	PERFS No	SNDERR mmho/m 5
SNDERRM mmho/m 2	SPSHIFT mV 0	SRFTEMP degF 50	TDEPTH ft 1107				

Variable Description

BOREID : Borehole I.D.
BOTTEMP : Bottom Hole Temperature
CASEOD : Casing O.D.
CASETHCK : Casing Thickness
FLUIDDEN : Fluid Density
MATRXDEN : Matrix Density

PERFS : Perforation Flag
SNDERR : Deep Sonde Error Correction
SNDERRM : Medium Sonde Error Correction
SPSHIFT : S.P. Baseline Offset
SRFTEMP : Surface Temperature
TDEPTH : Total Depth

Log Variables

DatabaseC:\ProgramData\Warrior\Data\desert eagle_red rocks #35-08.db
Dataset field/well/SWN/pass2.1/_vars_

Top - Bottom

AIR_HOLE? Yes	BOREID in 8.75	BOTTEMP degF 100	CASEOD in 7	CASETHCK in 0	FLUIDDEN g/cc 0	MATRXDEN g/cc 2.68	MudWgt lb/gal 9.5
NPORSEL Sandstone	PERFS No	SNDERR mmho/m 5	SNDERRM mmho/m 2	SPSHIFT mV 0	SRFTEMP degF 50	TDEPTH ft 1107	

Variable Description

AIR_HOLE? : Air Filled?
BOREID : Borehole I.D.
BOTTEMP : Bottom Hole Temperature
CASEOD : Casing O.D.
CASETHCK : Casing Thickness
FLUIDDEN : Fluid Density
MATRXDEN : Matrix Density
MudWgt : Mud Weight

NPORSEL : Neutron Porosity Curve Select
PERFS : Perforation Flag
SNDERR : Deep Sonde Error Correction
SNDERRM : Medium Sonde Error Correction
SPSHIFT : S.P. Baseline Offset
SRFTEMP : Surface Temperature
TDEPTH : Total Depth



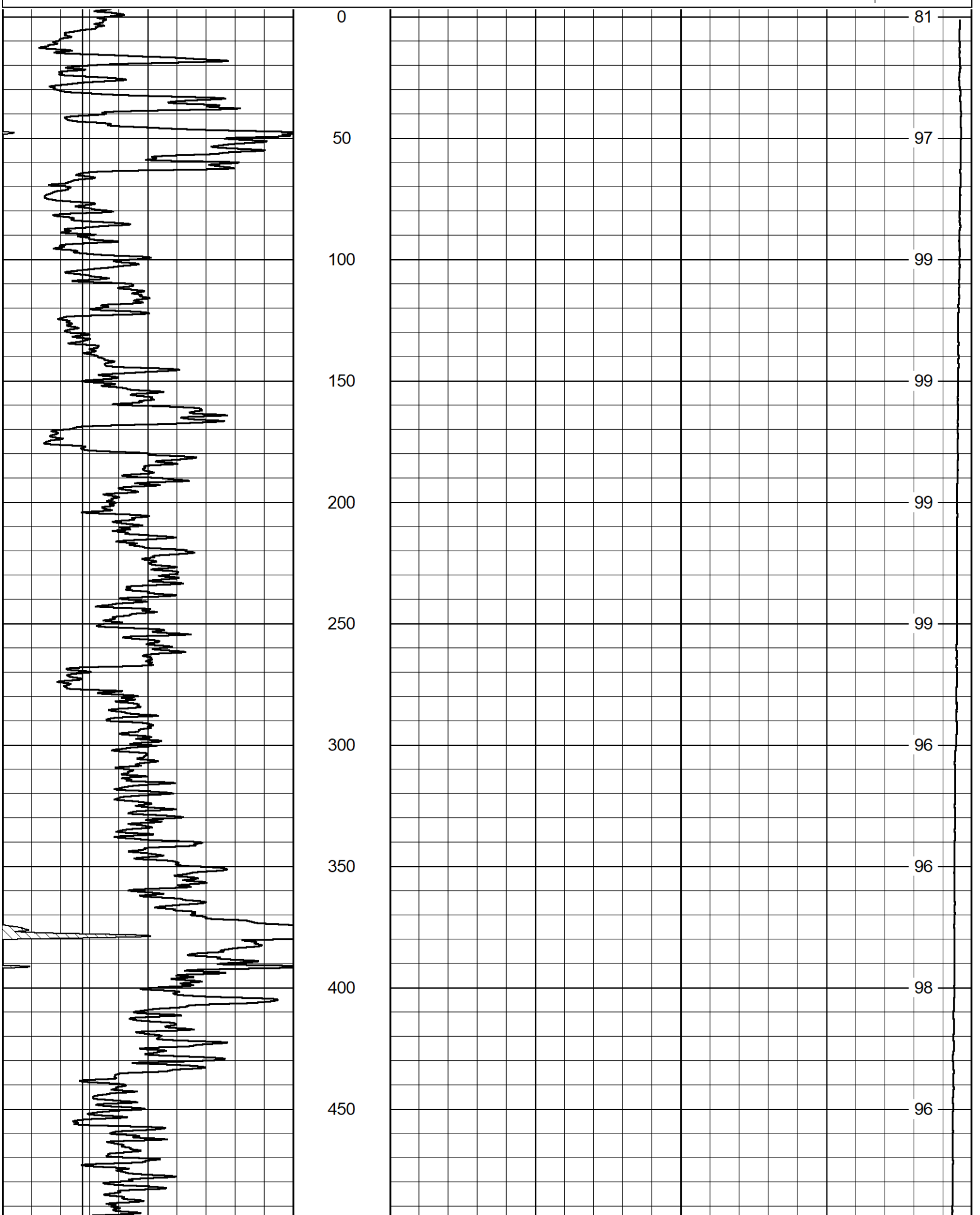
MIDWEST WIRELINE

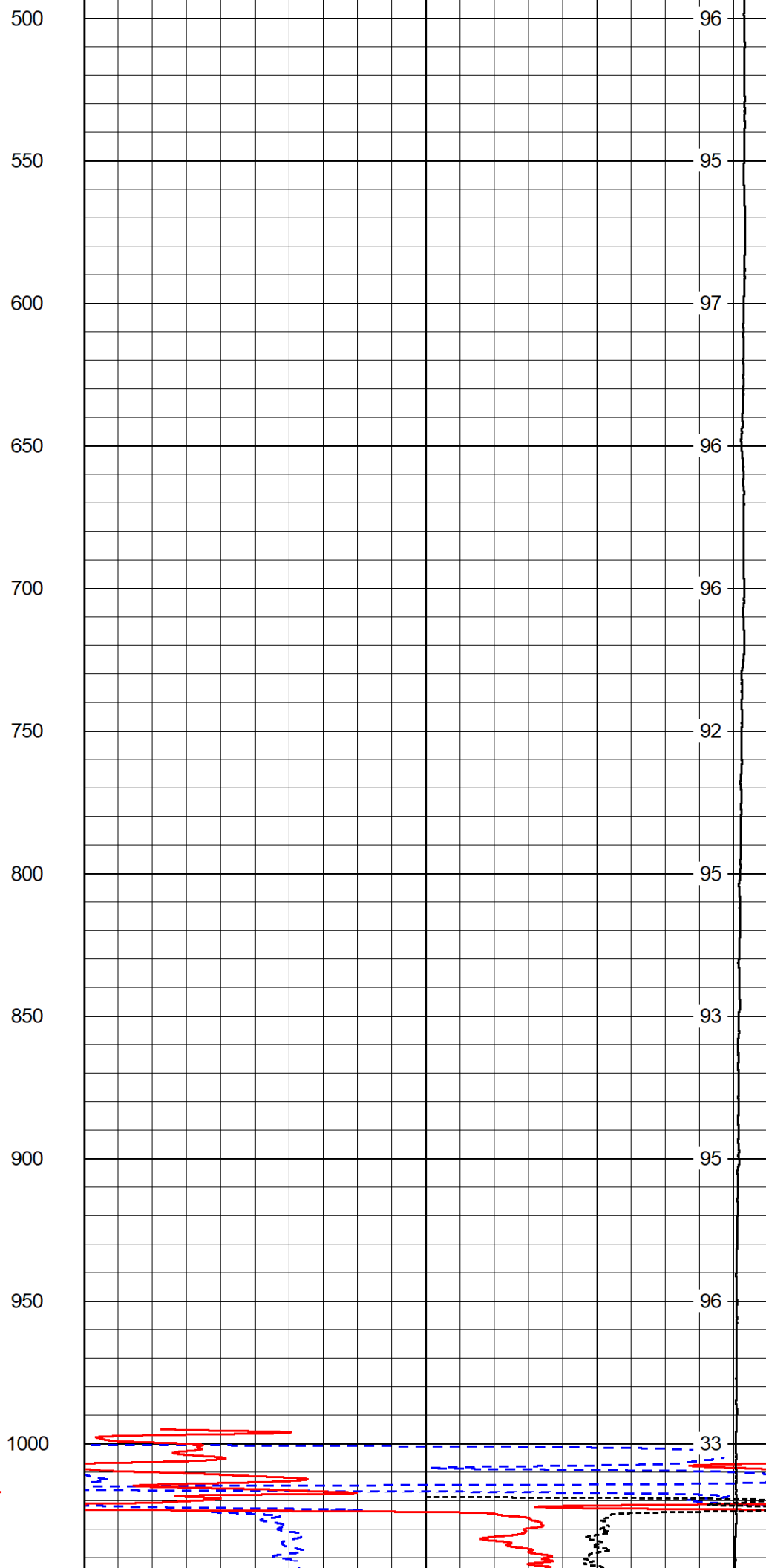
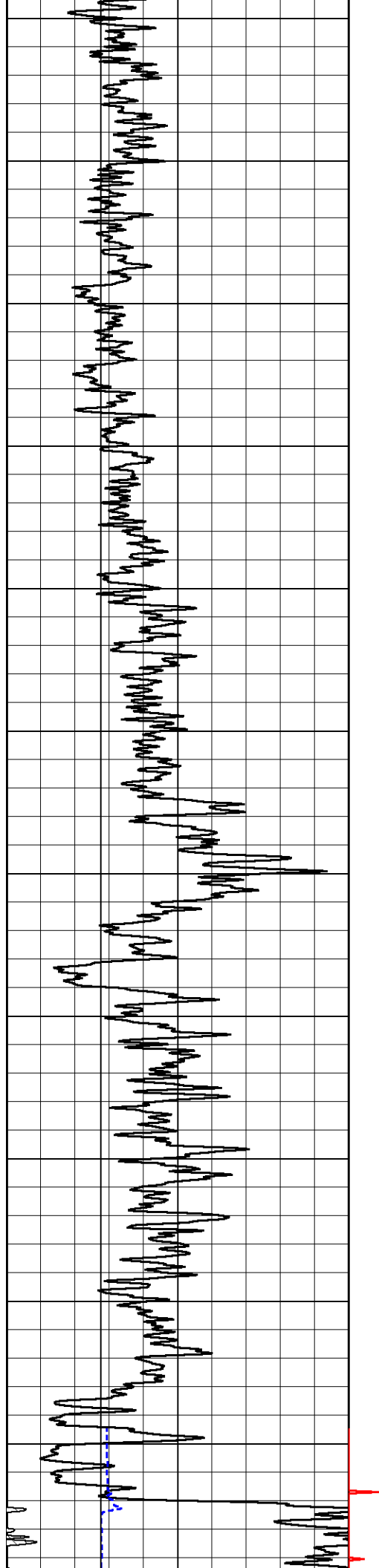
DETAIL SECTION

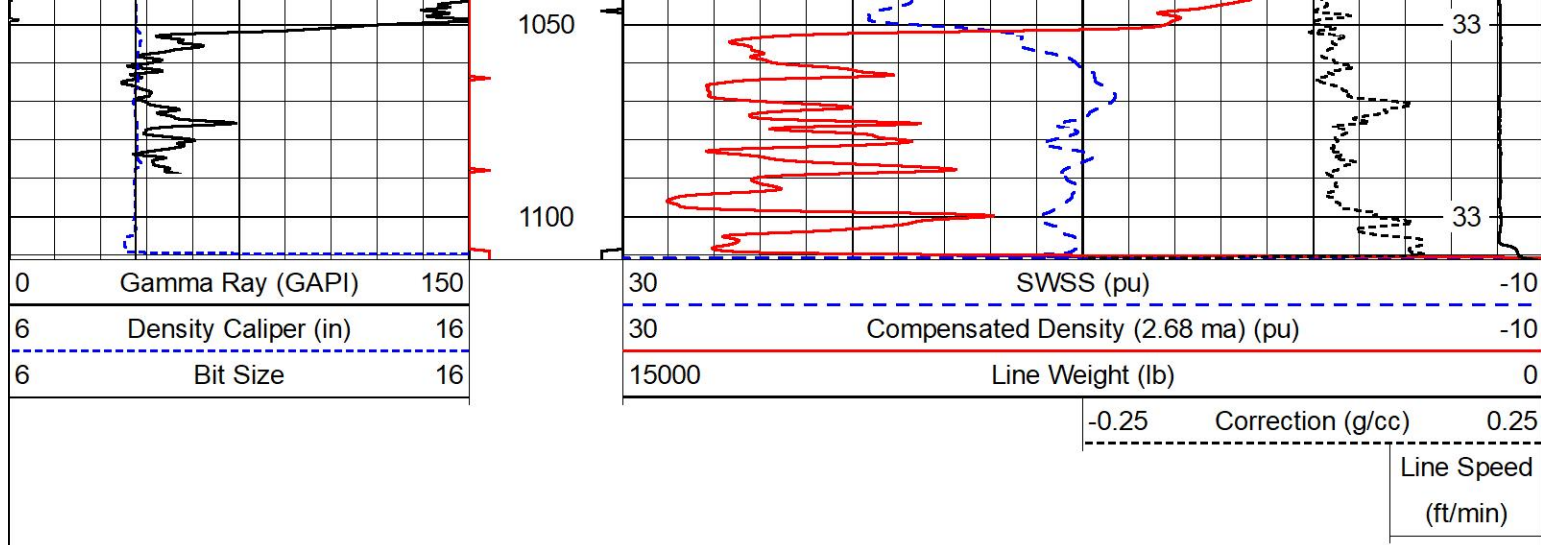
MAIN PASS

Database File desert eagle_red rocks #35-08.db
Dataset Pathname DIL/pass2.1
Presentation Format swncdl
Dataset Creation Fri Oct 27 17:40:18 2023
Charted by Depth in Feet scaled 1:600

0	Gamma Ray (GAPI)	150	30	SWSS (pu)	-10
6	Density Caliper (in)	16	30	Compensated Density (2.68 ma) (pu)	-10



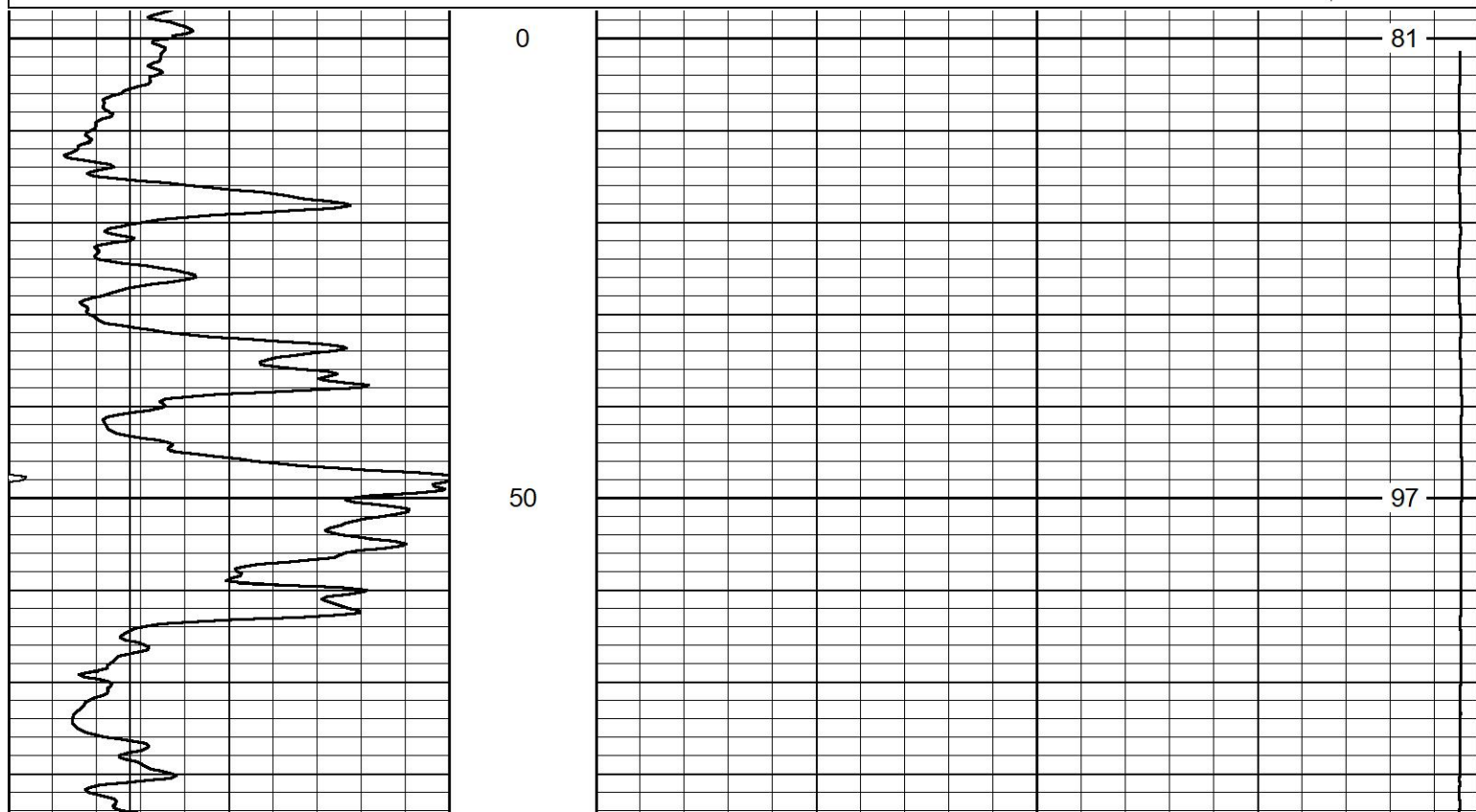
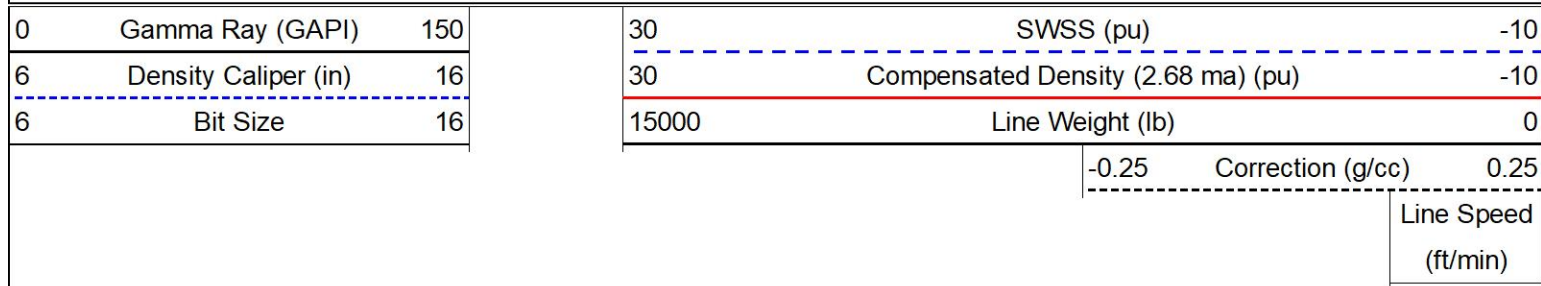


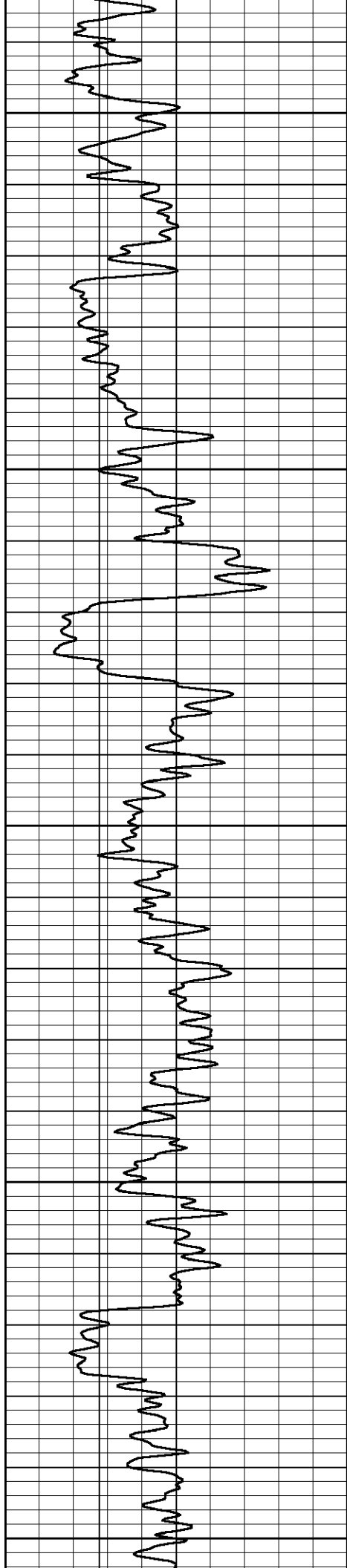


DETAIL SECTION

MAIN PASS

Database File: desert eagle_red rocks #35-08.db
 Dataset Pathname: DIL/pass2.1
 Presentation Format: swncdl
 Dataset Creation: Fri Oct 27 17:40:18 2023
 Charted by: Depth in Feet scaled 1:240





100

150

200

250

300

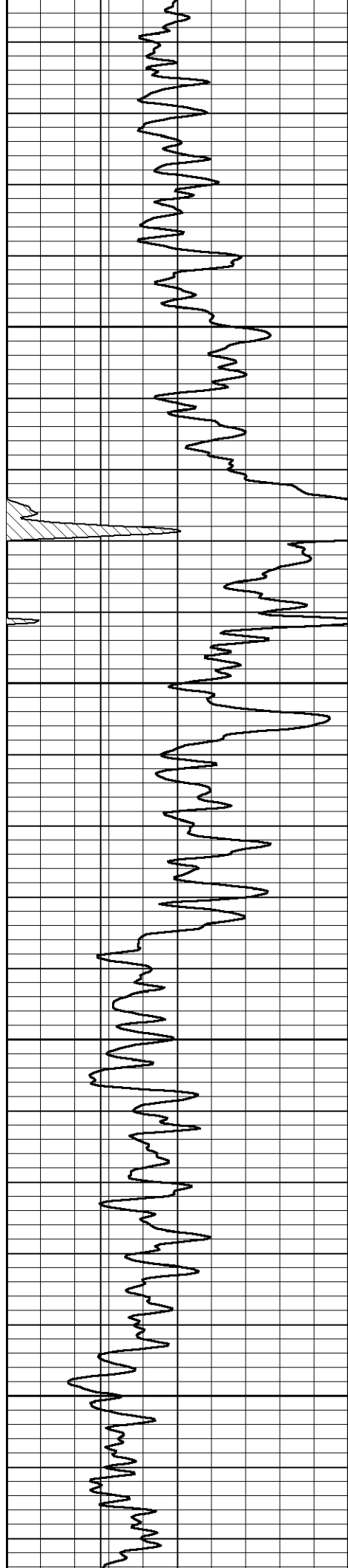
99

99

99

99

96



350

400

450

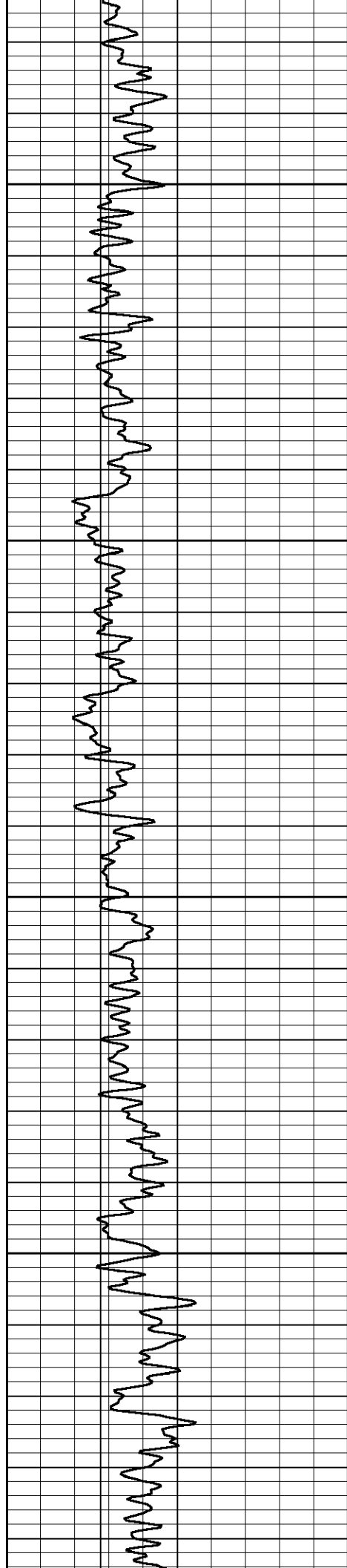
500

96

98

96

96



550

600

650

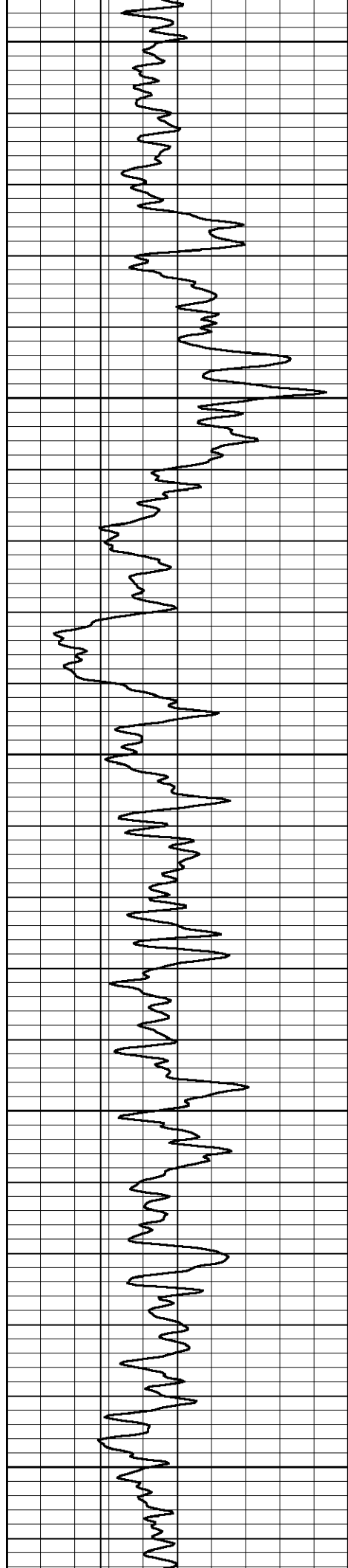
700

95

97

96

96



750

800

850

900

950

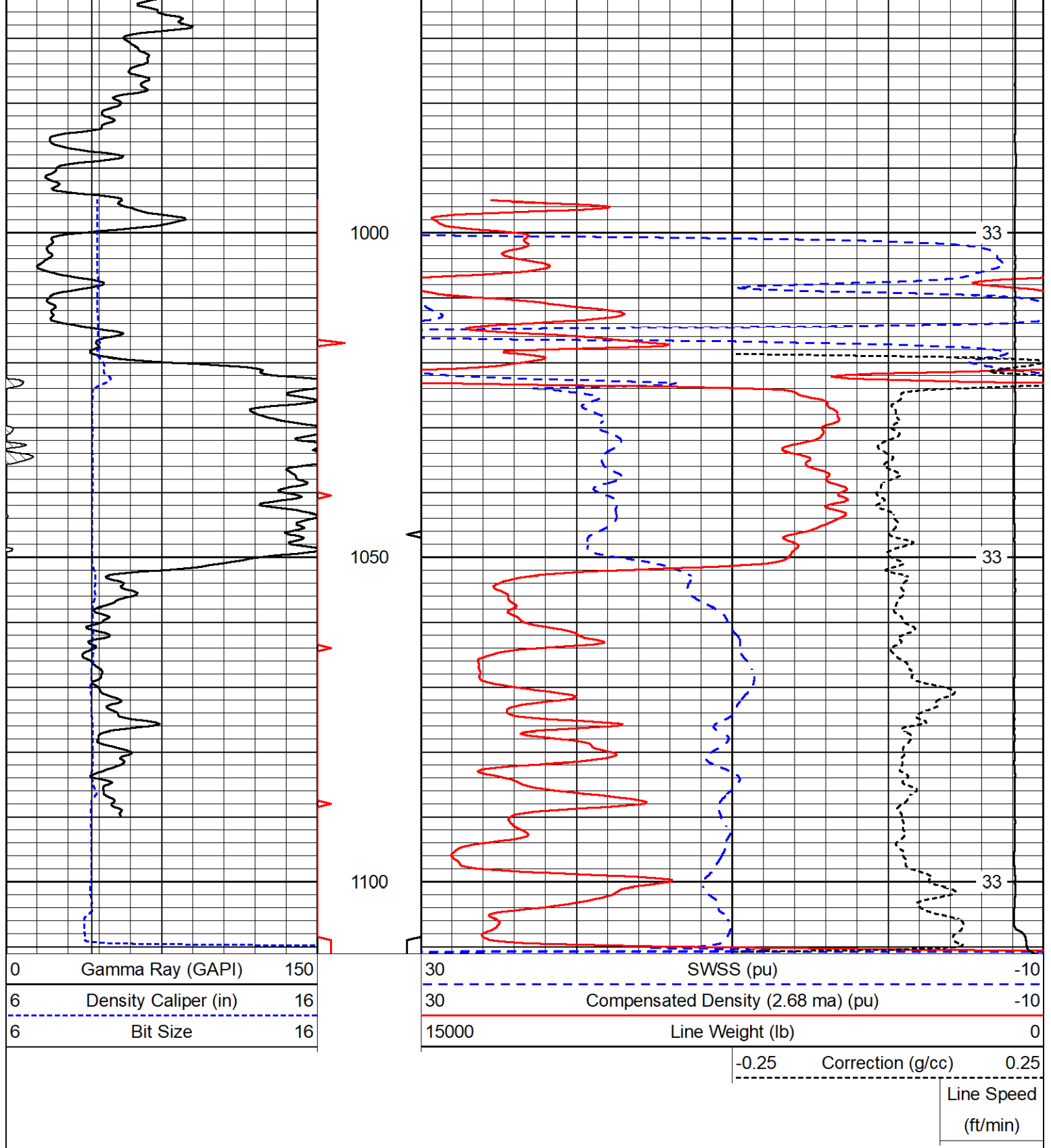
92

95

93

95

96



Calibration Report

Database File desert eagle_red rocks #35-08.db
Dataset Pathname CDL/pass2.1
Dataset Creation Fri Oct 27 17:43:38 2023

Compensated Density Calibration Report

Serial-Model: 307-25-M&W
Source / Verifier: 20762B / 2ci
Master Calibration Performed: Mon Oct 16 02:22:39 2023
Before Survey Verification Performed:

Master Calibration

	Density		Far Detector	Near Detector	
Magnesium	1.680	g/cc	4567.03	5405.52	cps
Aluminum	2.570	g/cc	1004.45	3659.64	cps
Spine Angle = 75.56			Density/Spine Ratio = 0.569		
	Size		Reading		
Small Ring	6.00	in	1.16		
Large Ring	18.00	in	1.01		

Gamma Ray Calibration Report

Serial Number: 102
 Tool Model: M&W
 Performed: Mon Sep 25 22:02:33 2023

 Calibrator Value: 1.0 GAPI

 Background Reading: 0.0 cps
 Calibrator Reading: 1.0 cps

 Sensitivity: 0.5250 GAPI/cps

Calibration Report

Database File desert eagle_red rocks #35-08.db
 Dataset Pathname SWN/pass2.1
 Dataset Creation Fri Oct 27 18:09:31 2023

Sidewall Neutron Calibration Report

Serial Number: 702
 Tool Model: M&W-SP

SWN Calibration Mon Jan 2 10:53:51 2023

Readings	Target	Normalization
2566.42 cps	1085.00 cps	0.3500

Caliper Calibration Mon Jan 2 10:53:51 2023

Readings	Reference	Gain	Offset
0.86	4.00	-18.31	18.65
0.31	14.00		

Gamma Ray Calibration Report

Serial Number: 102
 Tool Model: M&W
 Performed: Mon Sep 25 22:02:33 2023

 Calibrator Value: 1.0 GAPI

 Background Reading: 0.0 cps
 Calibrator Reading: 1.0 cps

 Sensitivity: 0.5250 GAPI/cps





MIDWEST WIRELINE

Company	Green Eagle Operating
Well	Red Rocks #35-08
Field	
County	Las Animas
State	Colorado