



CEMENT BOND LOG
GAMMA-RAY
CCL

Company	DESERT EAGLE OPERATING LLC	Country	USA
Well	RED ROCKS 35-08		
Field	WILDCAT		
County	LAS ANIMAS		
State	COLORADO		
Company		DESERT EAGLE OPERATING LLC	
Well		RED ROCKS 35-08	
Field		WILDCAT	
County		LAS ANIMAS	
State		COLORADO	
Location:		API # : 05-071-09930-00	Other Services
		LOCATION ID 484359	
		1667' FSL & 1478' FEL	
		LAT 37.471889 LONG -103.539533	
		SEC 35 TWP 29S RGE 55W	
Permanent Datum		GROUND LEVEL	Elevation 5563'
Log Measured From		GROUND LEVEL	K.B.
Drilling Measured From		GROUND LEVEL	D.F.
			G.L. 5563
Date	08/25/2023		
Run Number	ONE		
Depth Driller	1020'		
Depth Logger	1017'		
Bottom Logged Interval	1016'		
Top Log Interval	SURF		
Open Hole Size	N/A		
Type Fluid	WATER		
Density / Viscosity	N/A		
Max. Recorded Temp.	N/A		
Estimated Cement Top	SEE LOG		
Time Well Ready	ROA		
Time Logger on Bottom	14:00		
Equipment Number	8047		
Location	FARMINGTON NM		
Recorded By	S. TILLEN		
Witnessed By	BRAD BUTLER		
Borehole Record			
Run Number	Bit	From	To
Tubing Record			
	Size	Weight	From
			To
Casing Record			
Surface String	Size	Wgt/Ft	Top
Prot. String			Bottom
Production String	9.625"	36#	SURF
Liner			1020'

<<< Fold Here >>>

All interpretations are opinions based on inferences from electrical or other measurements and we cannot and do not guarantee the accuracy or correctness of any interpretation, and we shall not, except in the case of gross or willful negligence on our part, be liable or responsible for any loss, costs, damages, or expenses incurred or sustained by anyone resulting from any interpretation made by any of our officers, agents or employees. These interpretations are also subject to our general terms and conditions set out in our current Price Schedule.

Comments

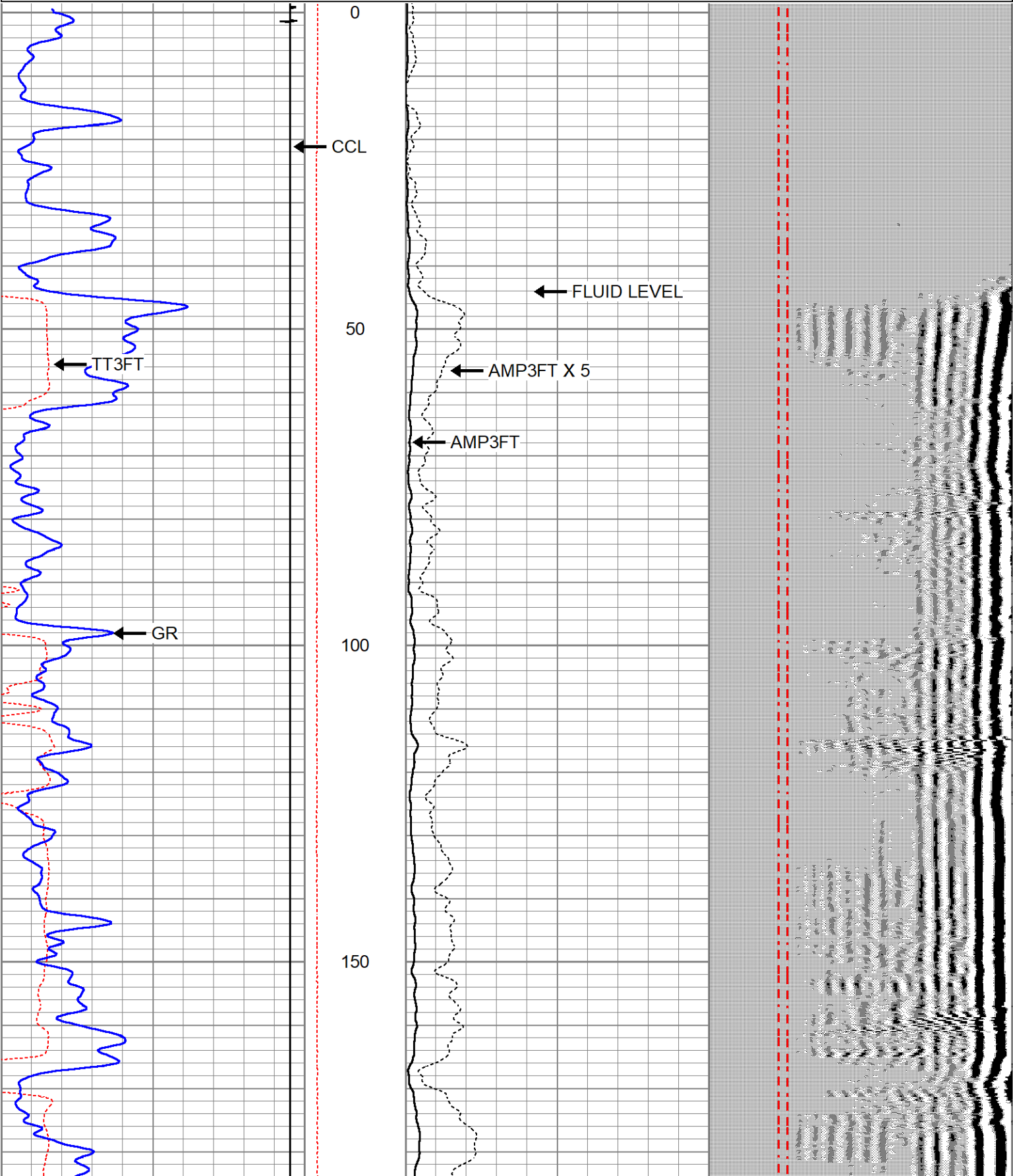
LOG WAS RAN ON WIRELINE MEASUREMENTS USING GROUND LEVEL FOR ZERO

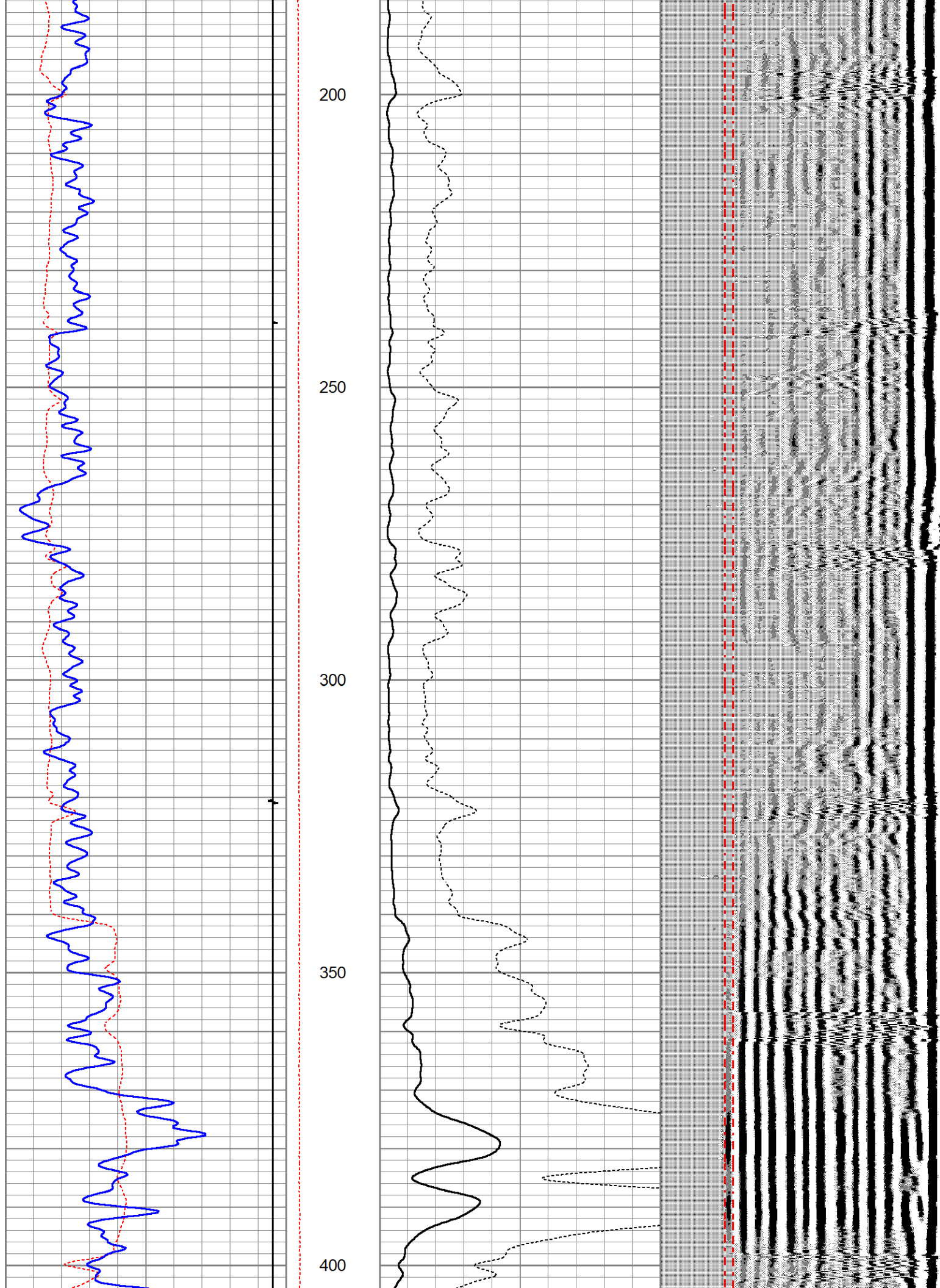


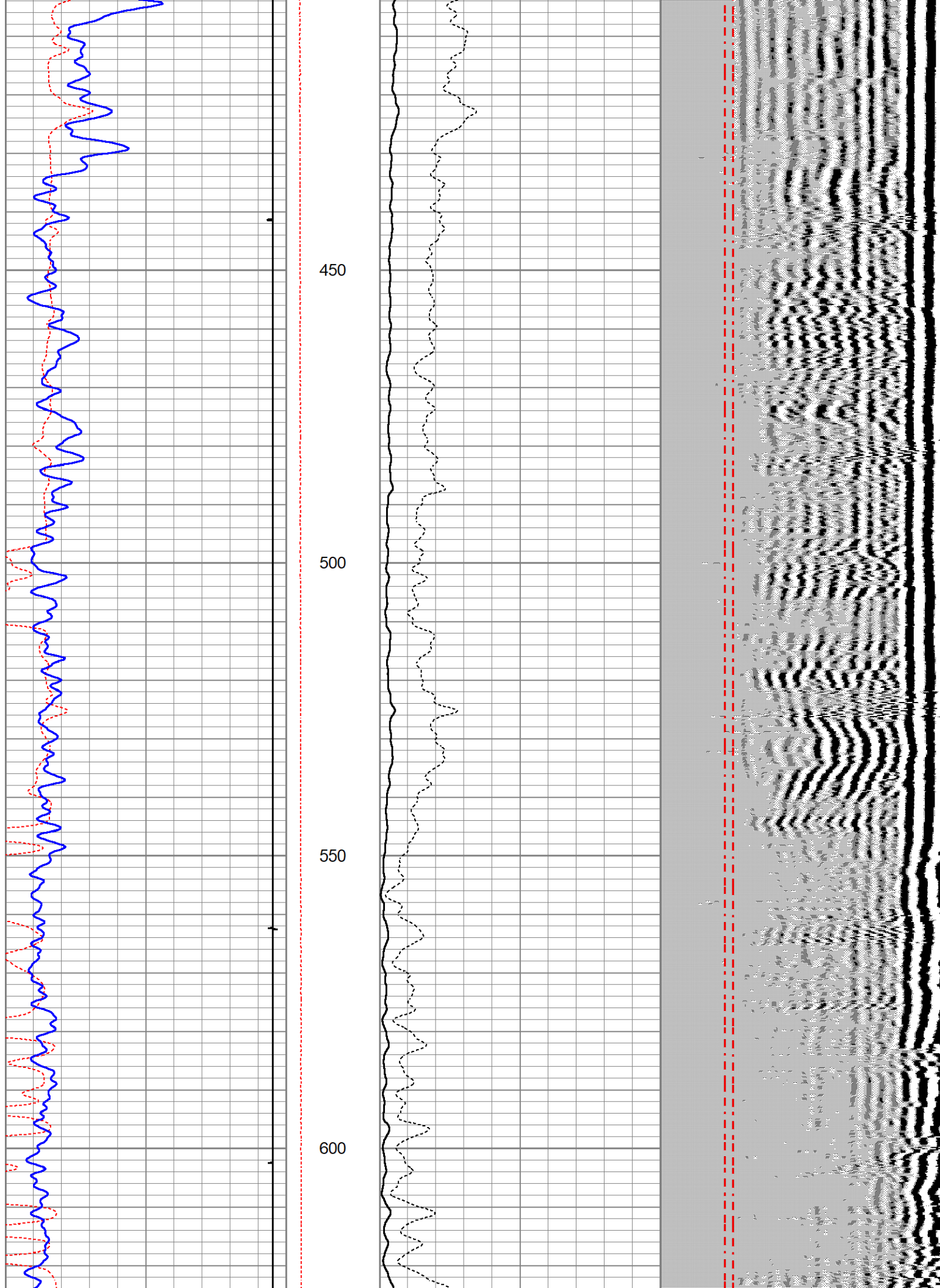
MAIN PASS 0 PSI

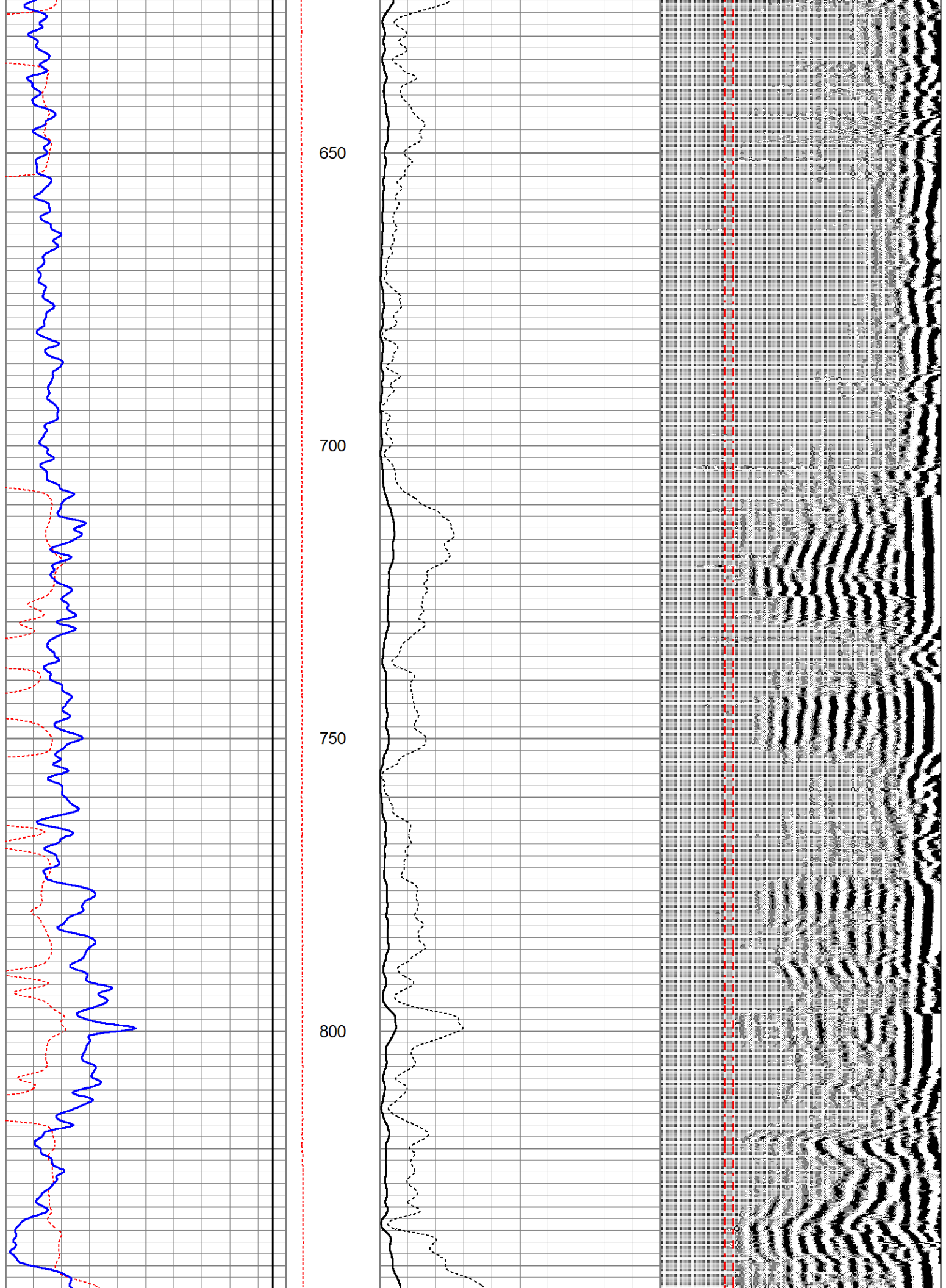
Database File	desert_eagle_red_rocks_35_08_cbl.db
Dataset Pathname	pass3
Presentation Format	farm3x5cbl
Dataset Creation	Fri Aug 25 14:21:24 2023
Charted by	Depth in Feet scaled 1:240

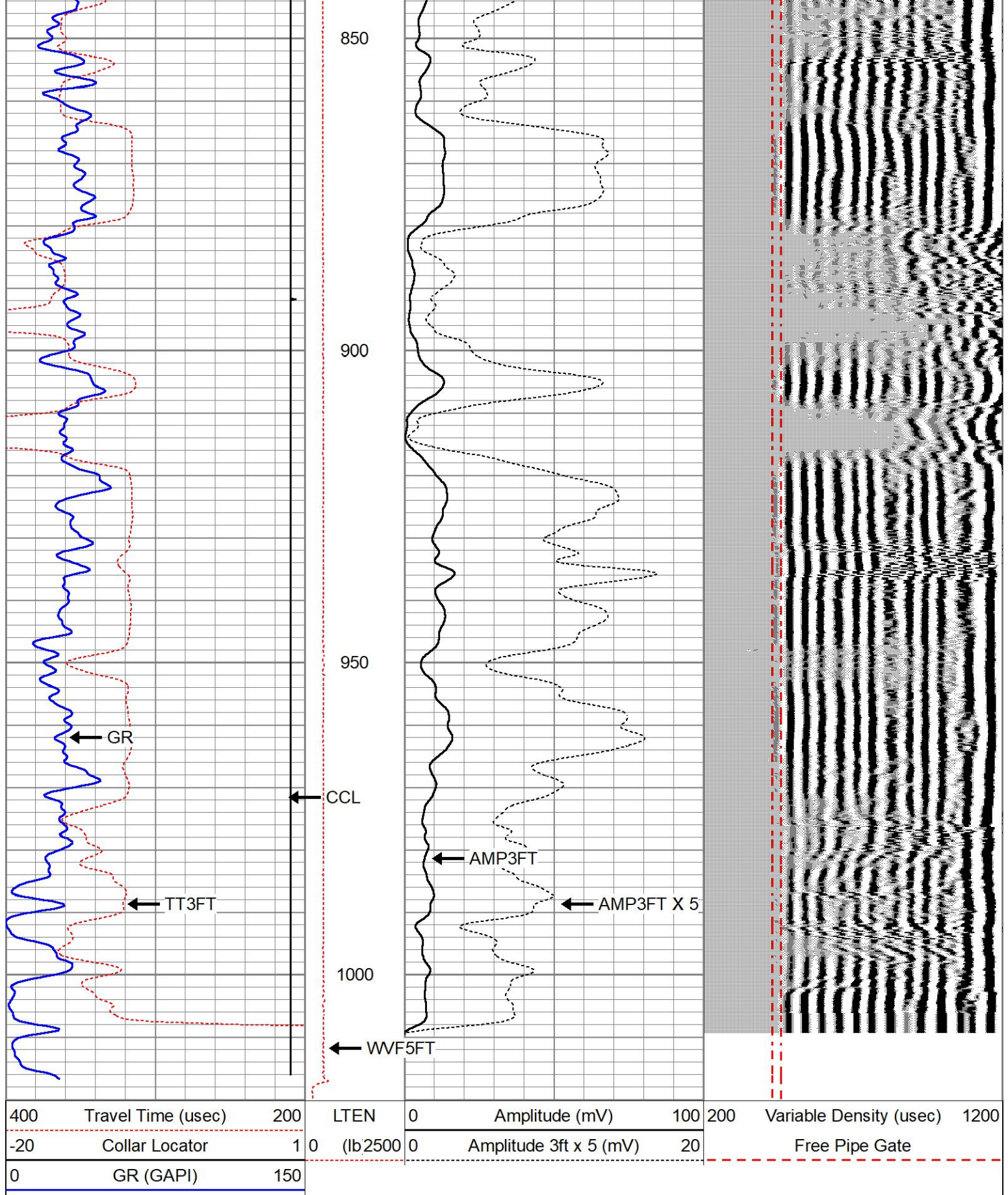
400	Travel Time (usec)	200	LTEN	0	Amplitude (mV)	100	200	Variable Density (usec)	1200
-20	Collar Locator	1	0 (lb/2500	0	Amplitude 3ft x 5 (mV)	20		Free Pipe Gate	
0	GR (GAPI)	150							







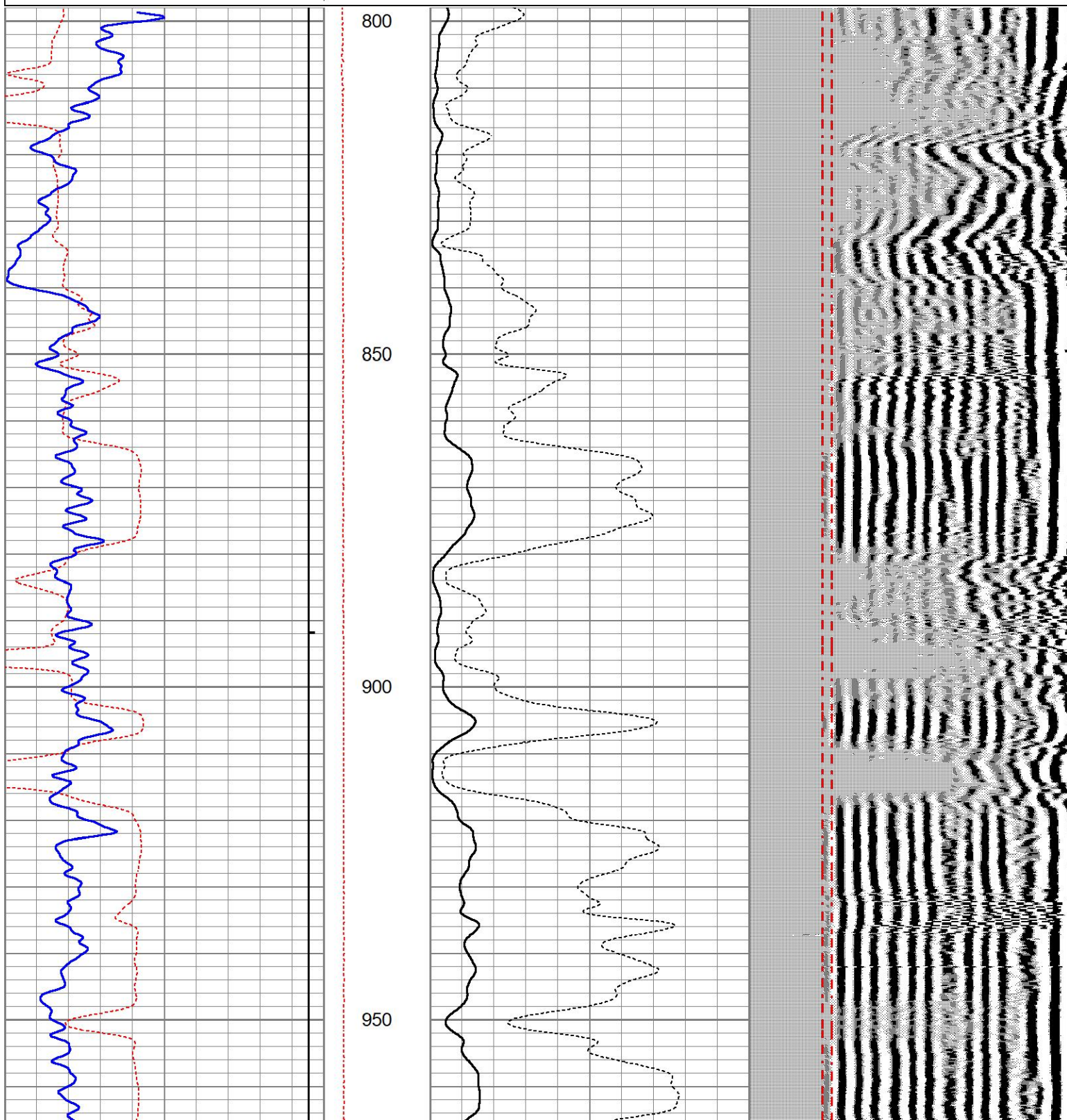


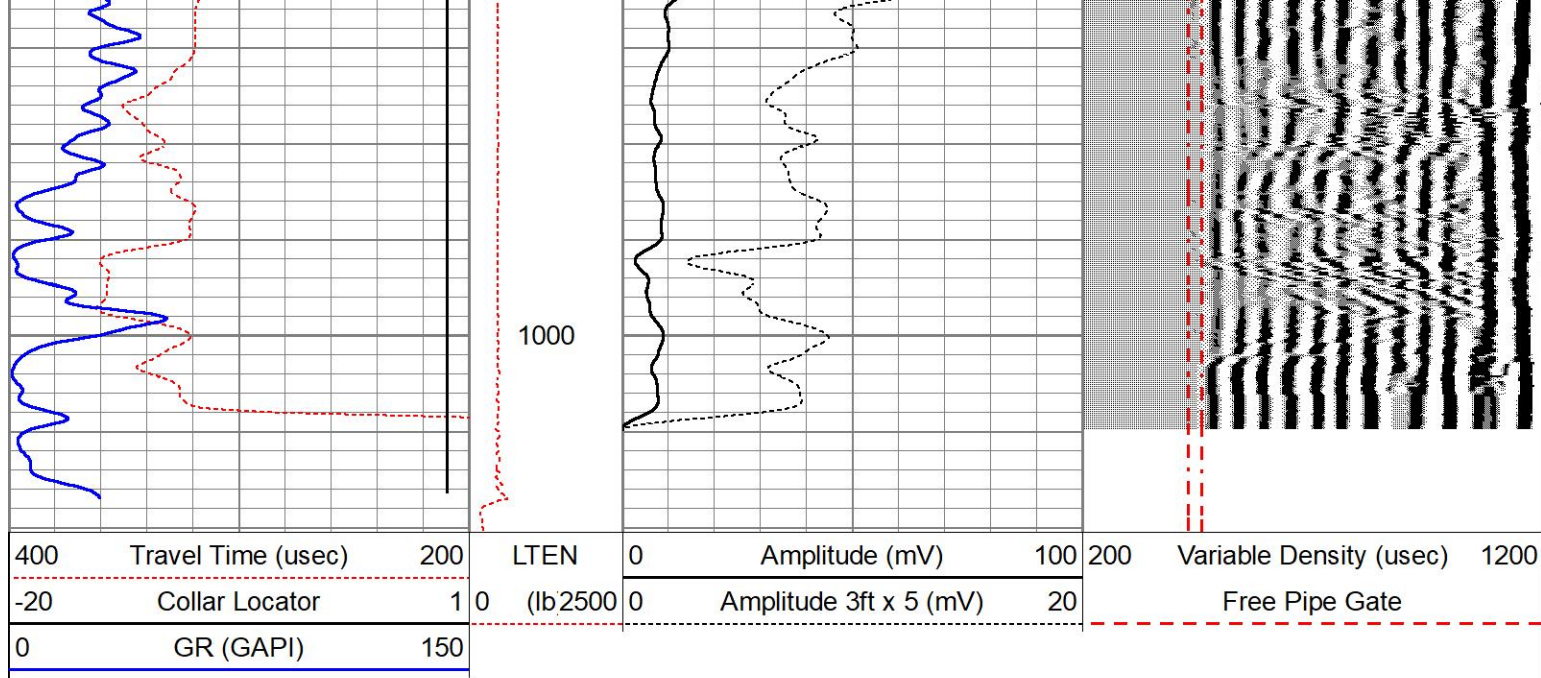


REPEAT PASS 0 PSI

Database File desert_eagle_red_rocks_35_08_cbl.db
 Dataset Pathname pass2
 Presentation Format farm3x5cbl
 Dataset Creation Fri Aug 25 14:15:33 2023
 Charted by Depth in Feet scaled 1:240

400	Travel Time (usec)	200	LTEN	0	Amplitude (mV)	100	200	Variable Density (usec)	1200
-20	Collar Locator	1	0	(lb)2500	0	Amplitude 3ft x 5 (mV)	20	Free Pipe Gate	
0	GR (GAPI)	150							





REPEAT PASS 0 PSI

Log Variables

DatabaseC:\ProgramData\Warrior\Data\desert_eagle_red_rocks_35_08_cbl.db

Dataset field/well/run1/pass3/_vars_

Top - Bottom

BOREID in 7.875	BOTTEMP degF 100	CASEOD in 9.6255	CASETHCK in 0.352	CASEWGHT lb/ft 36	MAXAMPL mV 51	MINAMPL mV 1	MINATTN db/ft 0.8
PERFS No	PPT usec 0	SRFTEMP degF 0	TDEPTH ft 0				

Variable Description

BOREID : Borehole I.D.
 BOTTEMP : Bottom Hole Temperature
 CASEOD : Casing O.D.
 CASETHCK : Casing Thickness

CASEWGHT : Casing Weight
 MAXAMPL : Maximum Amplitude
 MINAMPL : Minimum Amplitude
 MINATTN : Minimum Attenuation

PERFS : Perforation Flag
 PPT : Predicted Pipe Time
 SRFTEMP : Surface Temperature
 TDEPTH : Total Depth

Sensor	Offset (ft)	Schematic	Description	Length (ft)	O.D. (in)	Weight (lb)
			CHD-1.6875CHD 1 11/16" Cable Head	1.00	1.69	10.00
			CENT-BC275-0000 Probe 2.75" Bowspring Centralizer	2.83	2.75	24.00

WVF3FT	12.00		PRBDIGCBL-Digital (ProbeDIG_001) Probe 3' and 5' with Digital Telemetry	9.17	2.75	100.00	
WVF5FT	11.00						
WVFSYNC	7.75						
CCL	3.96		CENT-BC275-0000 Probe 2.75" Bowspring Centralizer	2.83	2.75	24.00	
GR	1.17		GR-Probe275 (275_070818) Probe Gamma Ray CCL Analog Bottom Det.	4.58	2.75	57.00	
			Plug-FA108-0000 1.38" Bull Plug	0.33	1.38	1.00	
Dataset: desert_eagle_red_rocks_35_08_cbl.db: field/well/run1/pass3 Total length: 20.75 ft Total weight: 216.00 lb O.D.: 2.75 in							

	Company	DESERT EAGLE OPERATING LLC					
	Well	RED ROCKS 35-08					
	Field	WILDCAT					
	County	LAS ANIMAS					
	State	COLORADO				Country	USA