

T1N, R102W, 6th P.M.

PROJECT

GULFLAND INC.

WELL LOCATION # 9 LOCATED
AS SHOWN IN THE NW 1/4 NE
1/4 SEC. 10, T1N, R102W, 6th
P.M., RIO BLANCO COUNTY,
COLO.

RECEIVED

OCT 8 1968

COLO. OIL & GAS CONS. COMM.



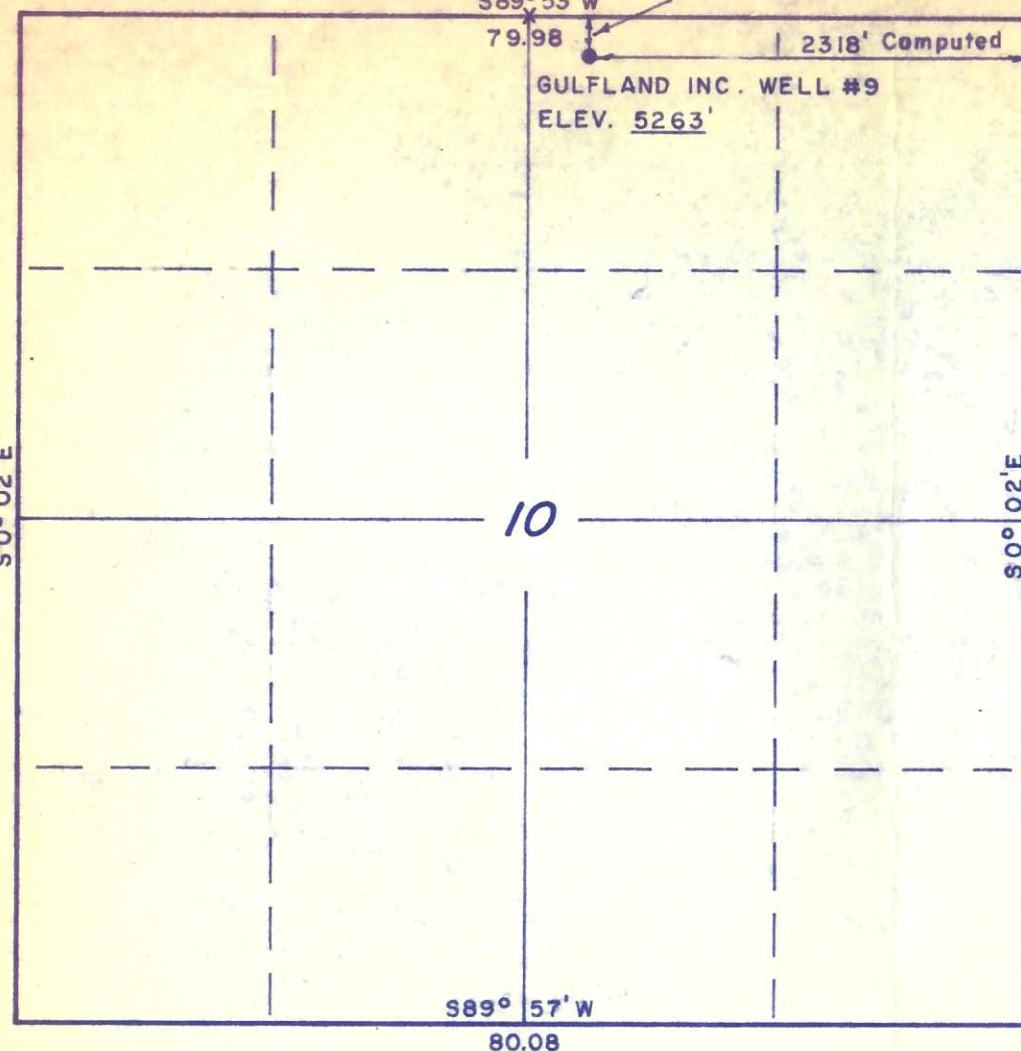
CERTIFICATE

THIS IS TO CERTIFY THAT THE ABOVE PLAT WAS PREPARED FROM
FIELD NOTES OF ACTUAL SURVEYS MADE BY ME OR UNDER MY
SUPERVISION AND THAT THE SAME ARE TRUE AND CORRECT TO THE
BEST OF MY KNOWLEDGE AND BELIEF

Shirley Starnit
REGISTERED LAND SURVEYOR
REGISTRATION NO 9186
STATE OF COLO.

UINTAH ENGINEERING & LAND SURVEYING
P.O. BOX Q - 110 EAST - FIRST SOUTH
VERNAL, UTAH - 84078

SCALE	1" = 1000'	DATE	Sept. 23, 1968
PARTY	L.D.T. - K.M.	REFERENCES	GLO Township Plat
WEATHER	Fair - Warm	FILE	Gulfland



X = Corners Used



00565868