



<<< Fold Here >>>

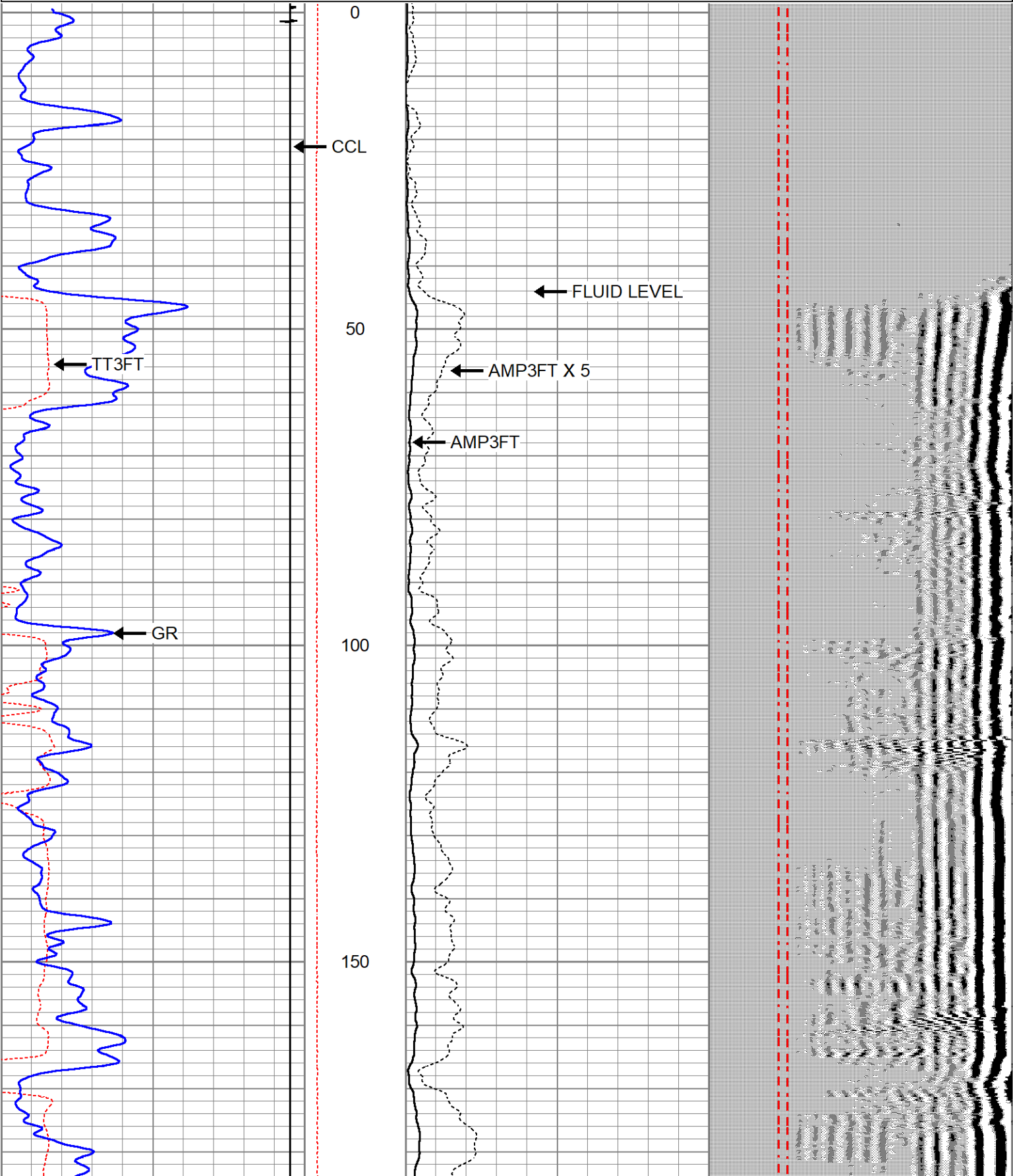
Comments

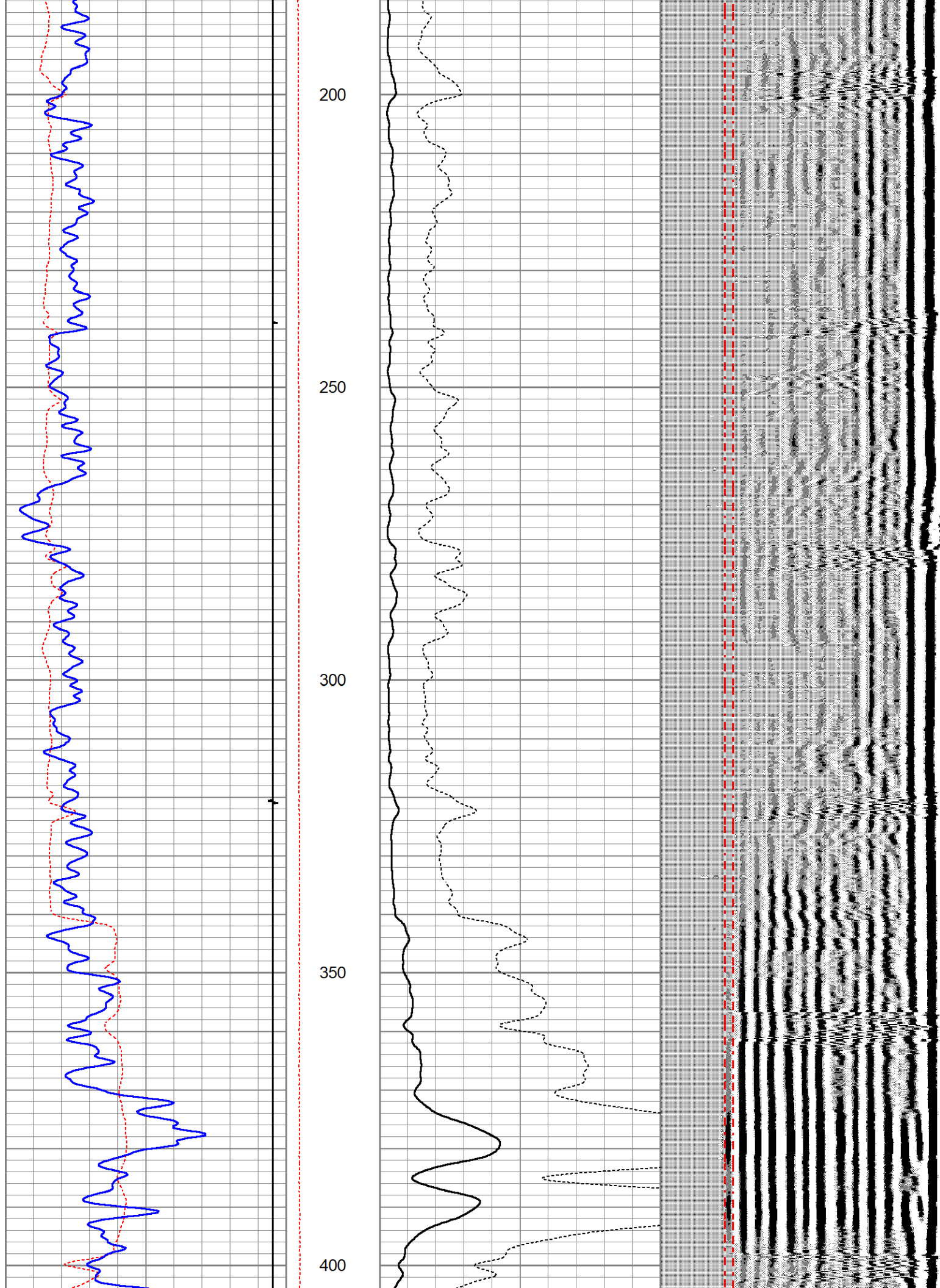
LOG WAS RAN ON WIRELINE MEASUREMENTS USING GROUND LEVEL FOR ZERO

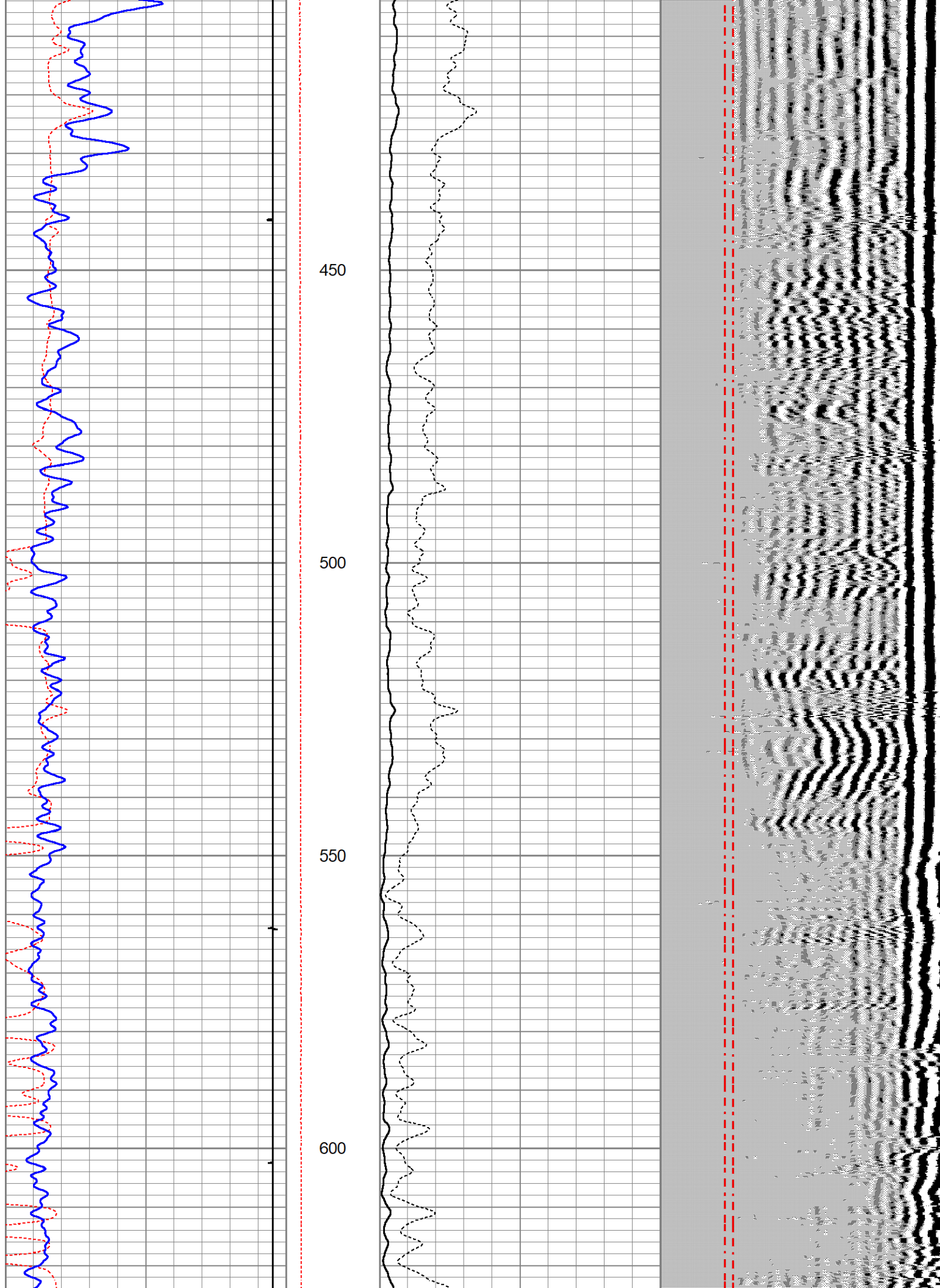


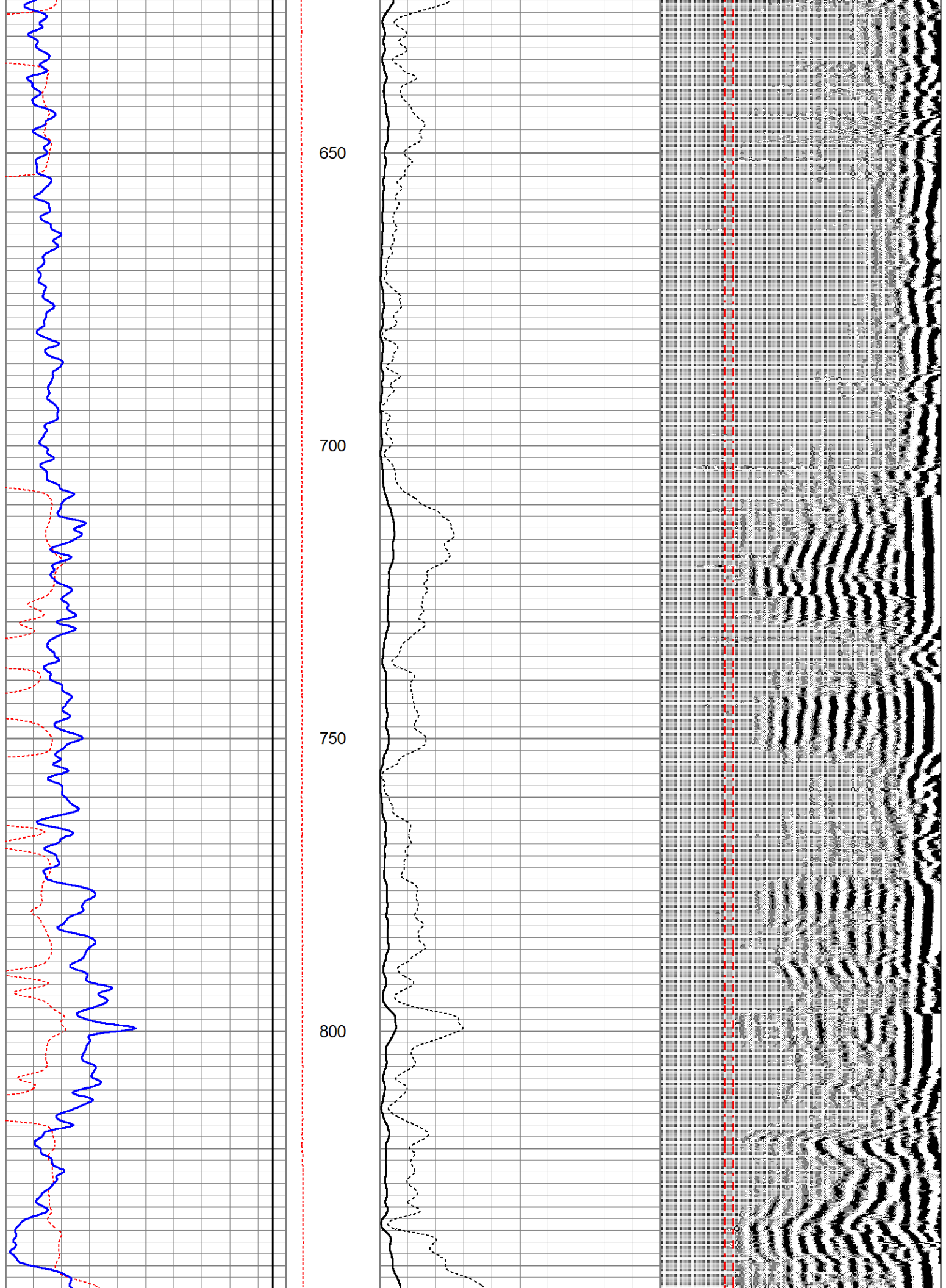
Database File	desert_eagle_red_rocks_35_08_cbl.db
Dataset Pathname	pass3
Presentation Format	farm3x5cbl
Dataset Creation	Fri Aug 25 14:21:24 2023
Charted by	Depth in Feet scaled 1:240

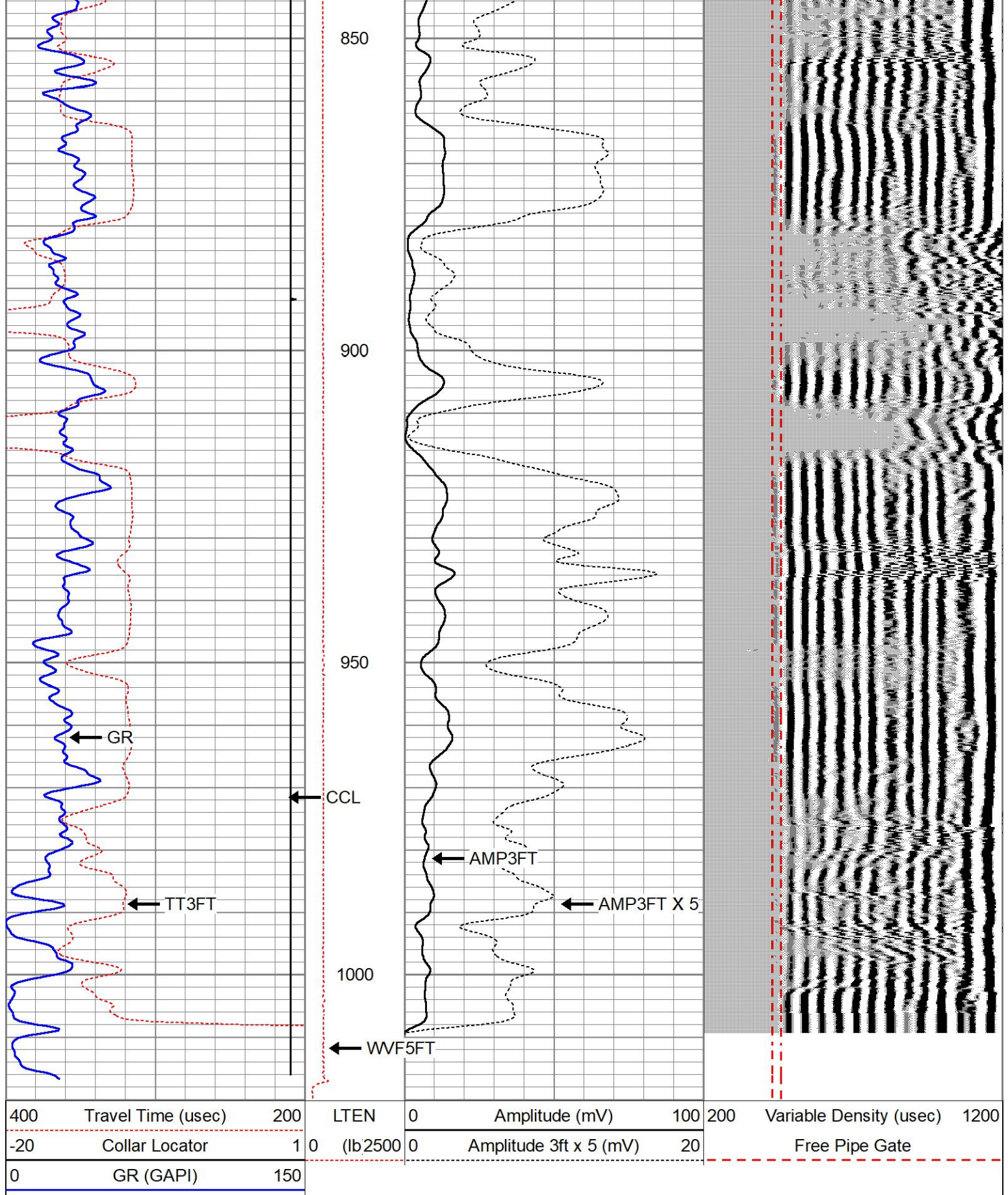
400	Travel Time (usec)	200	LTEN	0	Amplitude (mV)	100	200	Variable Density (usec)	1200
-20	Collar Locator	1	0 (lb/2500	0	Amplitude 3ft x 5 (mV)	20		Free Pipe Gate	
0	GR (GAPI)	150							







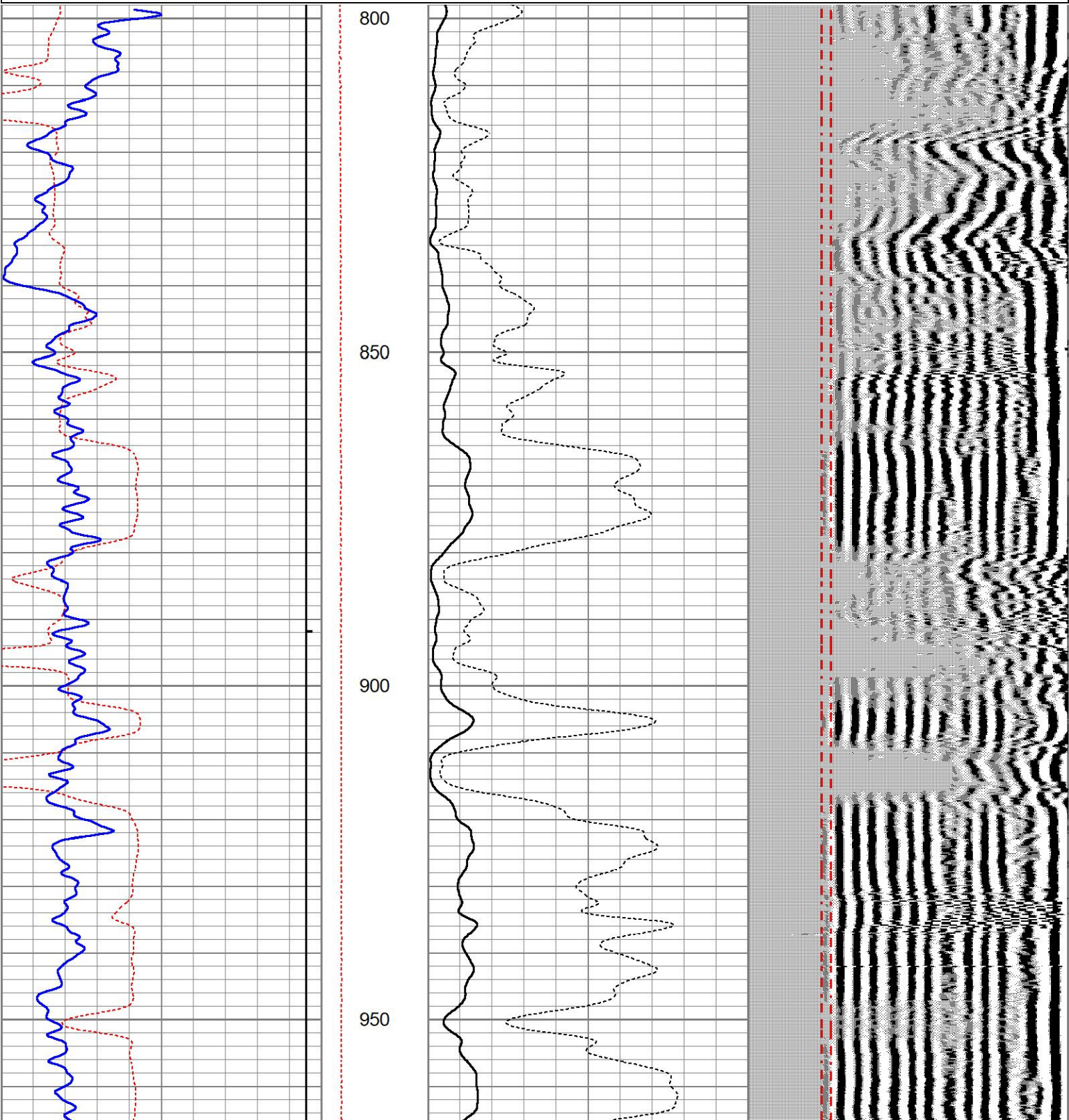


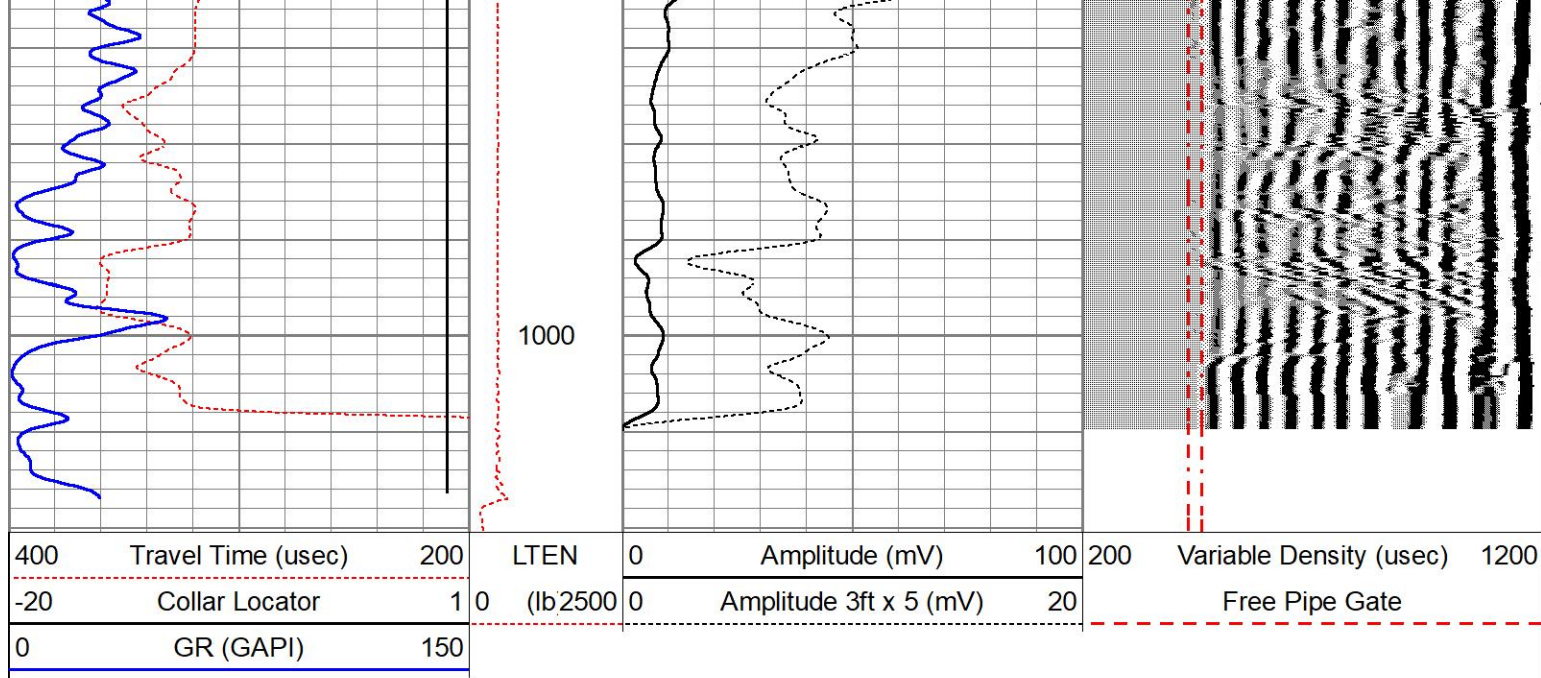


REPEAT PASS 0 PSI

Database File desert_eagle_red_rocks_35_08_cbl.db
 Dataset Pathname pass2
 Presentation Format farm3x5cbl
 Dataset Creation Fri Aug 25 14:15:33 2023
 Charted by Depth in Feet scaled 1:240

400	Travel Time (usec)	200	LTEN	0	Amplitude (mV)	100	200	Variable Density (usec)	1200
-20	Collar Locator	1	0	(lb)2500	0	Amplitude 3ft x 5 (mV)	20	Free Pipe Gate	
0	GR (GAPI)	150							





REPEAT PASS 0 PSI

Log Variables

DatabaseC:\ProgramData\Warrior\Data\desert_eagle_red_rocks_35_08_cbl.db

Dataset field/well/run1/pass3/_vars_

Top - Bottom

BOREID in 7.875	BOTTEMP degF 100	CASEOD in 9.6255	CASETHCK in 0.352	CASEWGHT lb/ft 36	MAXAMPL mV 51	MINAMPL mV 1	MINATTN db/ft 0.8
PERFS No	PPT usec 0	SRFTEMP degF 0	TDEPTH ft 0				

Variable Description

BOREID : Borehole I.D.
BOTTEMP : Bottom Hole Temperature
CASEOD : Casing O.D.
CASETHCK : Casing Thickness

CASEWGHT : Casing Weight
MAXAMPL : Maximum Amplitude
MINAMPL : Minimum Amplitude
MINATTN : Minimum Attenuation

PERFS : Perforation Flag
PPT : Predicted Pipe Time
SRFTEMP : Surface Temperature
TDEPTH : Total Depth

Sensor	Offset (ft)	Schematic	Description	Length (ft)	O.D. (in)	Weight (lb)
			CHD-1.6875CHD 1 11/16" Cable Head	1.00	1.69	10.00
			CENT-BC275-0000 Probe 2.75" Bowspring Centralizer	2.83	2.75	24.00

WVF3FT	12.00		PRBDIGCBL-Digital (ProbeDIG_001) Probe 3' and 5' with Digital Telemetry	9.17	2.75	100.00		
WVF5FT	11.00							
WVFSYNC	7.75							
CCL	3.96		CENT-BC275-0000 Probe 2.75" Bowspring Centralizer	2.83	2.75	24.00		
GR	1.17		GR-Probe275 (275_070818) Probe Gamma Ray CCL Analog Bottom Det.	4.58	2.75	57.00		
			Plug-FA108-0000 1.38" Bull Plug	0.33	1.38	1.00		
Dataset: desert_eagle_red_rocks_35_08_cbl.db: field/well/run1/pass3 Total length: 20.75 ft Total weight: 216.00 lb O.D.: 2.75 in								

	Company	DESERT EAGLE OPERATING LLC					
	Well	RED ROCKS 35-08					
	Field	WILDCAT					
	County	LAS ANIMAS					
	State	COLORADO				Country	USA