



LOCATION PLANS FOR
VALWOOD R-5 & R-6 WELLS
NE $\frac{1}{4}$ SEC.10-1N-102W
RIO BLANCO COUNTY, COLO.

RECEIVED

SEP 19 1974

GOLD. OIL & GAS CONS. COMM.

1. A survey plat for the location of the subject wells is attached. Map No.1 shows the route to the well sites from the town of Rangely, Colorado. This map shows the secondary roads now in use, and the relationship of the well sites to these secondary roads.
2. The proposed well sites are less than 200' from present roads and can be reached from the secondary road going south past the Moon Lake Electric Company sub-station from the River Road. The locations are less than one mile from the town of Rangely.
3. Plat No.1 (the survey plat) shows the location of the present wells and dry holes near the proposed well sites.
4. See 1 and 2 above.
5. A plan for the location of completion equipment in the event the wells are successful is shown on Plat No.2. A central tank battery (which is already present on the lease- see Plat No.1) will be used for the oil storage. Surface lines will be laid to this tank battery. The lines will be buried where crossing roads.
6. Water for the drilling operations, if any is needed, will be hauled by truck from the town of Rangely.
7. A plat (Plat No.3) showing the plan for the equipment layout to be used in the drilling of the proposed wells is attached. The wells will be drilled with a rotary rig, using air for circulation. The plat shows a small reserve pit into which the air cuttings and dust will be discharged. At the completion of the well these pits will be folded-in and levelled. All trash and burnable material will be removed from the location and taken to the city dump.
8. No house trailers or camp facilities will be needed for these wells.
9. There is a commercial airstrip at Rangely, if it is needed.
10. See Plat No.3 for the drilling equipment layout.
11. There is little topsoil at the drill-sites. The area is relatively flat (See Map No.1), and no deep cuts will be required. The location work will be minimal and will consist primarily of removal of the sage brush. Vegetation is limited to sage brush and

RECEIVED

SEP 19 1974

COLO. OIL & GAS CONS. COMM.

grass. After the wells are finished and completed, or abandoned, if dry, the well sites will be cleaned and levelled, and the pits will be covered.

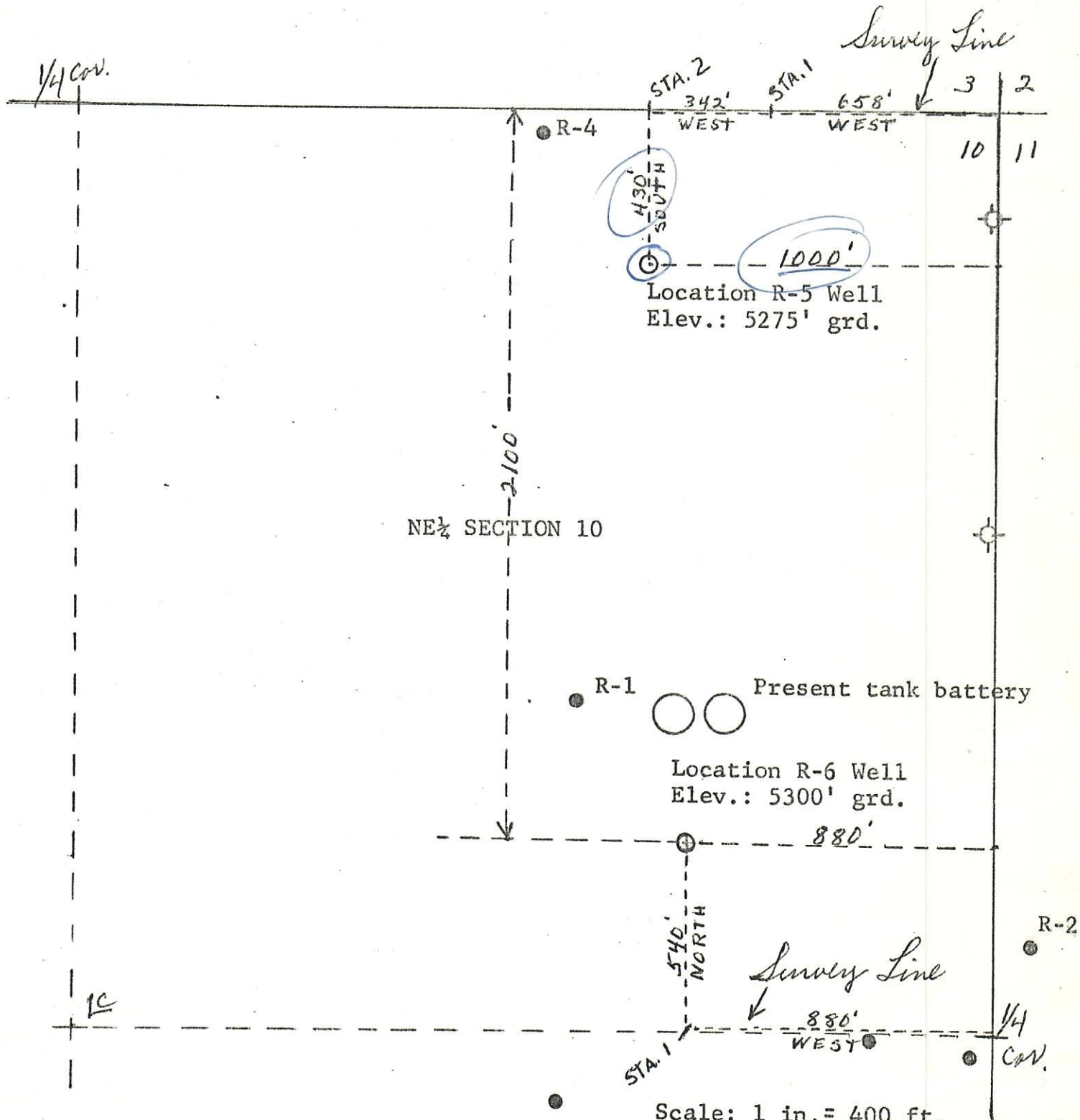
12. As can be seen from the map herewith, the area is quite level and road and location work will be minimal. There are a number of oil lines and power lines in the area. These will be carefully avoided in any work that is done.

LOCATION PLAT FOR
VALWOOD R-5 & R-6 WELLS
NE $\frac{1}{4}$ SEC. 10-1N-102W
RIO BLANCO COUNTY, COLO.

RECEIVED

SEP 19 1974

COLO. OIL & GAS CONS. COMM.



WELL CONTROL EQUIPMENT
FOR
VALWOOD R-5 & R-6 WELLS
NE $\frac{1}{4}$ SEC. 10-1N-102W
RIO BLANCO COUNTY, COLO.

RECEIVED

SEP 19 1974

COLO. OIL & GAS CONS. COMM.

The following control equipment is planned for the above designated wells:

1. Surface Casing:

- A. Hole size for surface casing is 9 5/8".
- B. Setting depth for casing is approx. 30'.
- C. Casing specs. are: 7", 20.00#, J-55, 8-rd. thread.
- D. Anticipated pressure at setting depth is less than 20#.
- E. Casing will be run and cemented thoroughly with 25 sks of cement with returns to the surface.
- F. Top of casing will be just above ground level.

2. Casing head:

Series 300

Flange size: 8 (nominal); A.P.I. pressure rating: 720#; 7 OCT or Norris; new or used; equipped with two 2" ports with nipples and 2" valves (250# W.P.). Casing head and valves above ground.

3. Intermediate Casing:

None planned.

4. Blowout preventer:

- A. A simple hydril or small bag Type preventer will be installed on top of the casing head. This can be mechanically operated and need not have a pressure rating of more than 600#.
- B. Rotating Head: 8", set on top of hydril and bolted securely; complete with kelly drive; pressure lubricator with 2 7/8" stripper rubber for 300# + W.P. Shaffer or equivalent.

5. Auxillary Equipment:

A float valve (600#) is to be used in the bottom drill collar at all times. The kelly hose will also have a shut-off valve (600# W.P.) at floor level.

6. Anticipated pressures:

Pressures greater than about 200# at 3000' have not been previously encountered in any of the hundreds of Mancos wells that have been drilled in the Rangely area. A few wells have flowed oil with a gas drive; and therefore, some type of preventer should be used to shut-off a possible flow under low pressure.

7. Drilling Fluids:

It is planned to drill the subject wells with air for circulation to prevent any damage to the formation.

8. Production Casing:

A. Hole size: $6\frac{1}{2}$ ";

B. Approximate setting depth: 2500' to 3000'

C. Casing specs.: $5\frac{1}{2}$ " O.D.; J-55; 14.00#; 8-rd thread; new or used.

D. Casing will be run and set on bottom and hung from the surface casing by $5\frac{1}{2}$ " slips set in the casing head. The casing will be slotted opposite the pay zones before it is run. A simple Norris (or equivalent) tubing head will be set on top of the casing head.

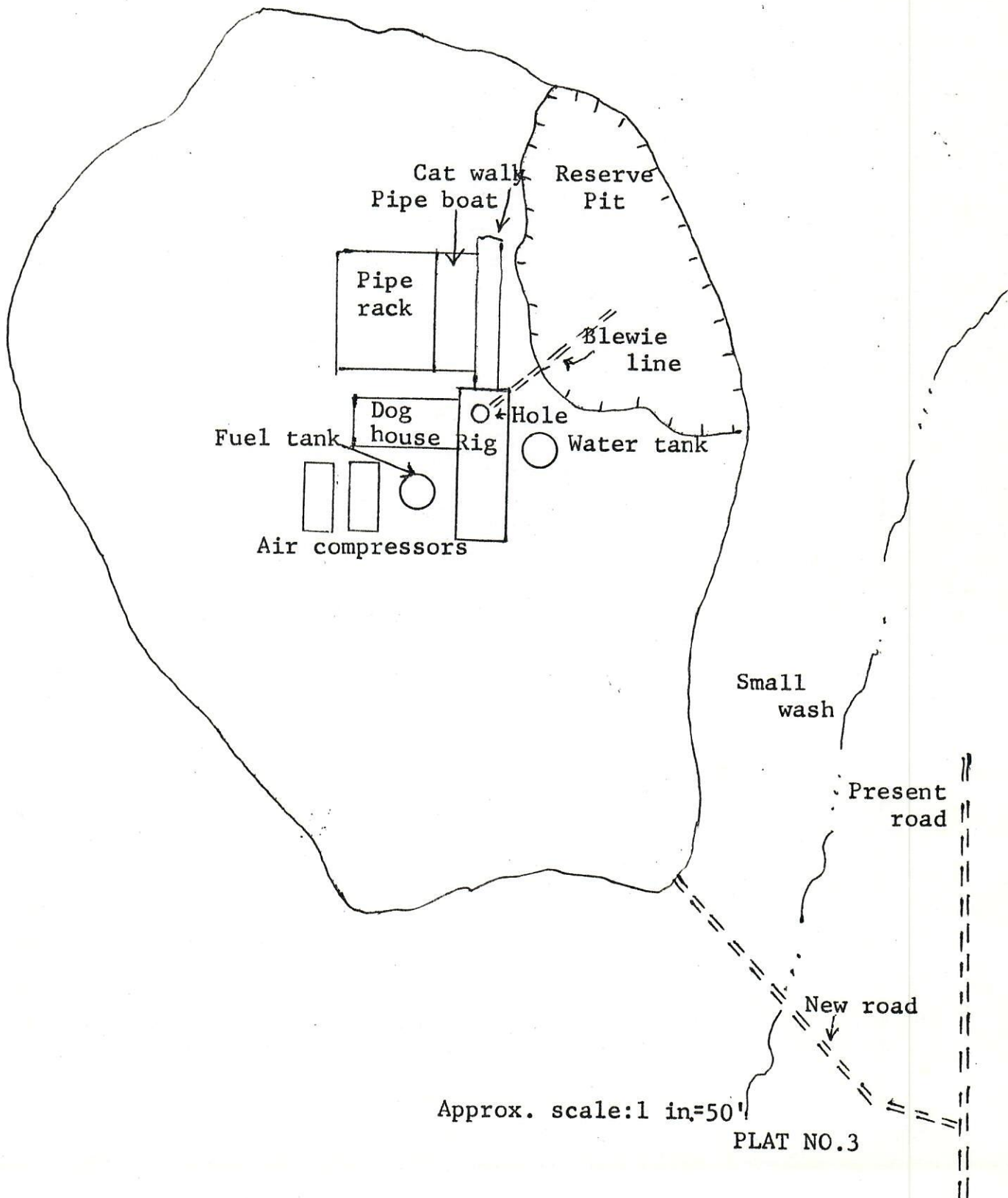
E. Tubing, $2\frac{3}{8}$ " O.D., upset, will be run with a mud anchor and seating nipple on the bottom and set in the tubing head.

PLAN FOR PLACEMENT OF DRILLING
EQUIPMENT FOR VALWOOD R-5 WELL
NE.NE.SEC.10-1N-102W
RIO BLANCO COUNTY, COLO.

RECEIVED

SEP 19 1974

COLO. OIL & GAS CONS. COMM.



PLAN FOR COMPLETION EQUIPMENT
FOR VALWOOD R-5 WELL
NE.NE.SEC.10-1N-102W.
RIO BLANCO COUNTY, COLO.

RECEIVED

SEP 19 1974

COLO. OIL & GAS CONS. COMM.

