

WELL LOCATION AND A

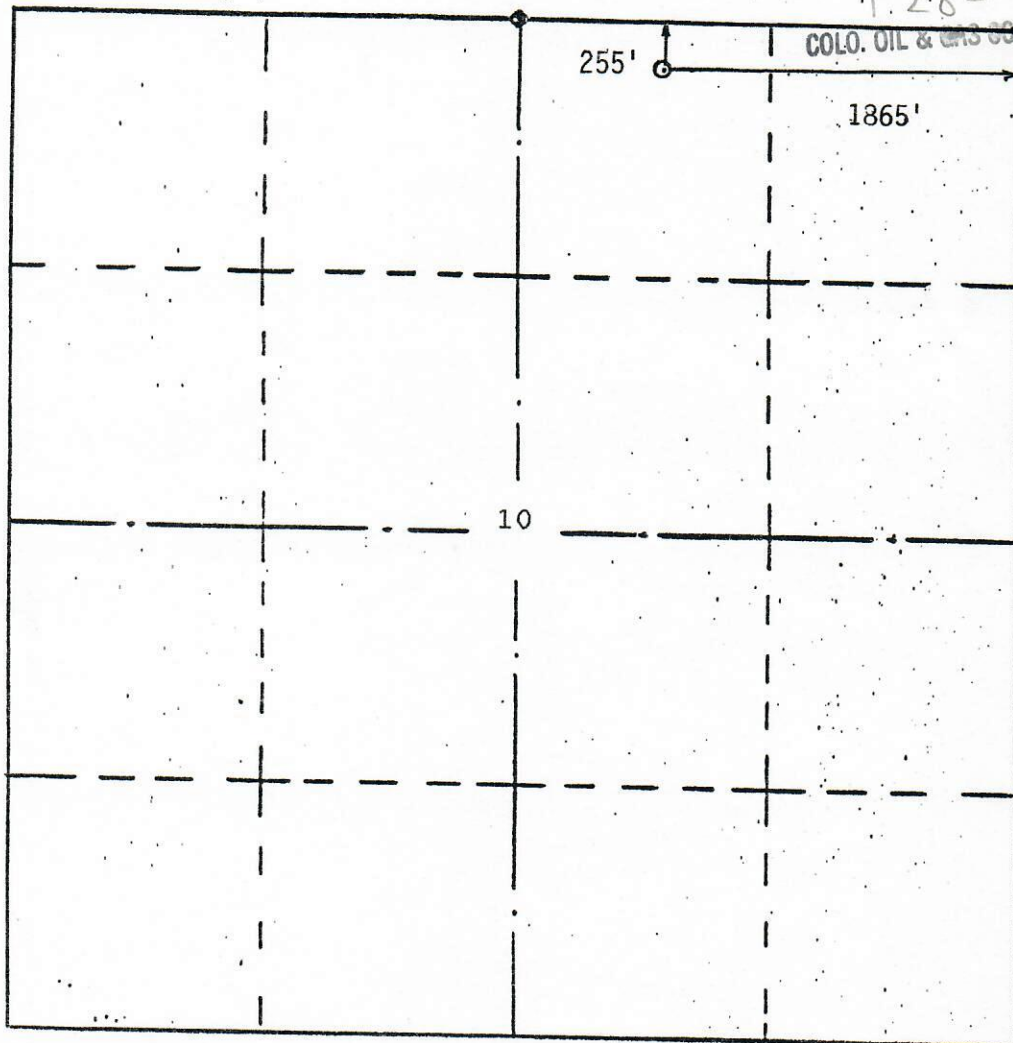


00065399

PLAT RECEIVED

256.0 MAR 13 1986

1.28



1"=1000'

WELL LOCATION DESCRIPTION:

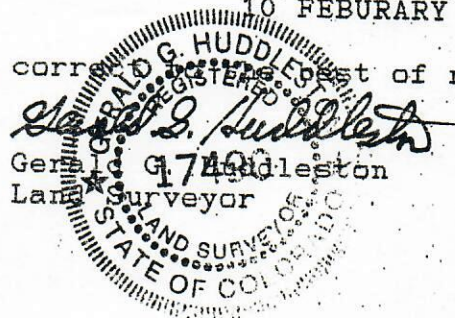
POLFAM EXPLORATION CO.
GOVERNMENT #2-10
255' FN & 1865' FE
SECTION 10, T.1 N., R.102 W., SPM
RIO BLANCO COUNTY, CO
5268' GROUND ELEVATION

REFERENCES:

200' EAST 5268'
200' SOUTH 5270'

10 FEBURARY 1986

The above plat is true and correct to the best of my knowledge and belief.



original footages: 240' FNL and 1880' FEL
Footages above reflect new location.