

# Location Plat for



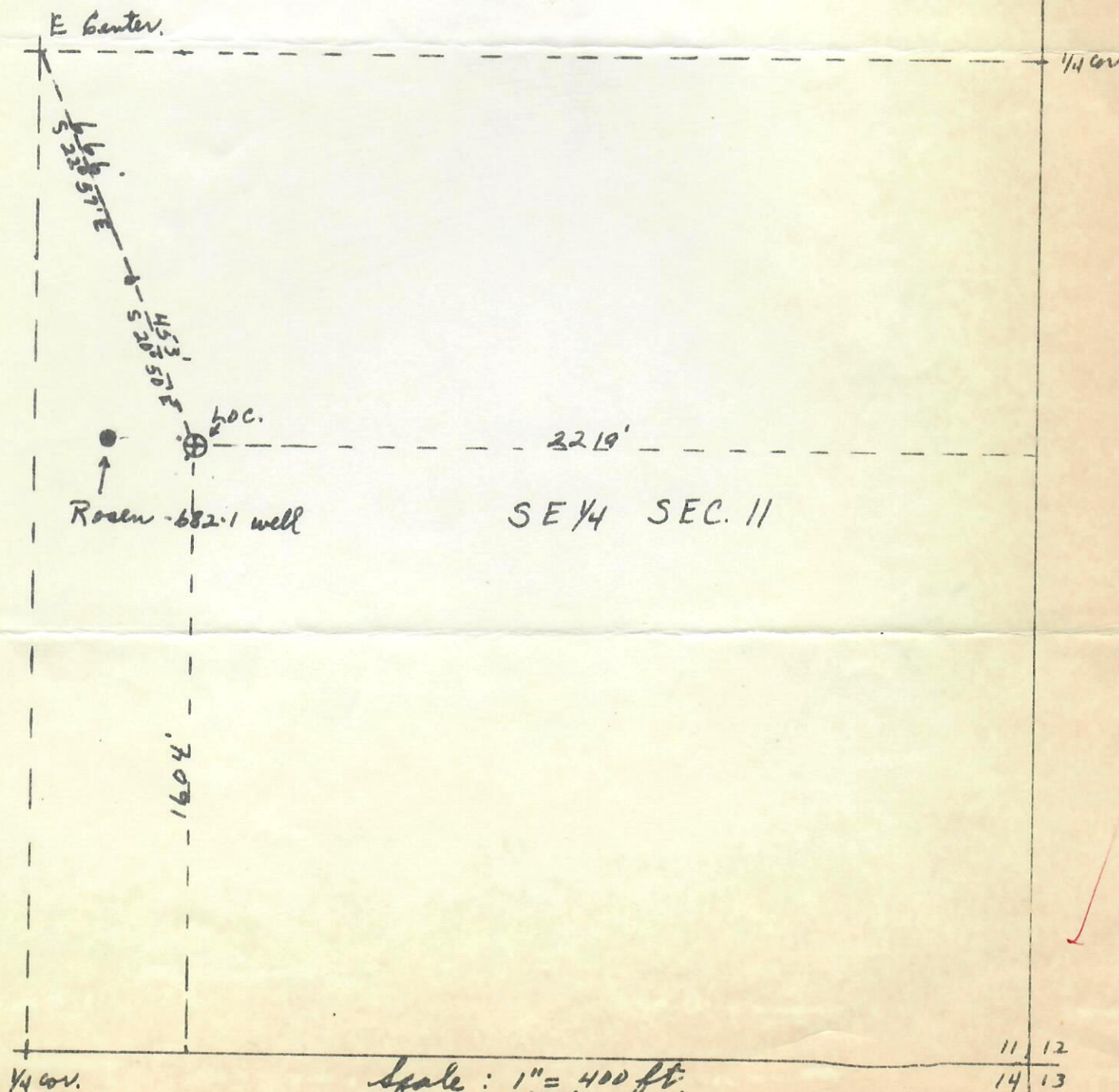
00043968

Coal-Mine Draw #1 Well  
NW. SE. Sec. 11, T1N., R102W.  
Rio Blanco County, Colo.  
Elev. = 5438' <sup>hd.</sup>

RECEIVED

OCT 1 1968

COLO. OIL & GAS CONS. COMM.



Scale: 1" = 400 ft.  
Date: Sept. 30, 1968  
Surveyed By: H. Don Quigley