

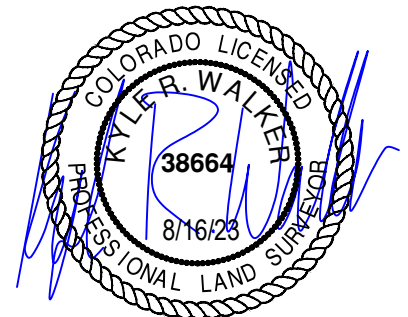
TOPOGRAPHIC
LOYALTY INNOVATION LEGACY
520 Stacy Court Ste B, Lafayette, CO 80026
303.666.0379 www.topographic.com

SURVEYOR'S STATEMENT
THE UNDERSIGNED HEREBY STATES THAT THE WELL LOCATION SHOWN HEREON WAS STAKED ON THE GROUND BASED ON EXISTING MONUMENTATION AND/OR PHYSICAL EVIDENCE FOUND IN THE FIELD AND IS CORRECT TO THE BEST OF MY KNOWLEDGE, INFORMATION AND BELIEF.

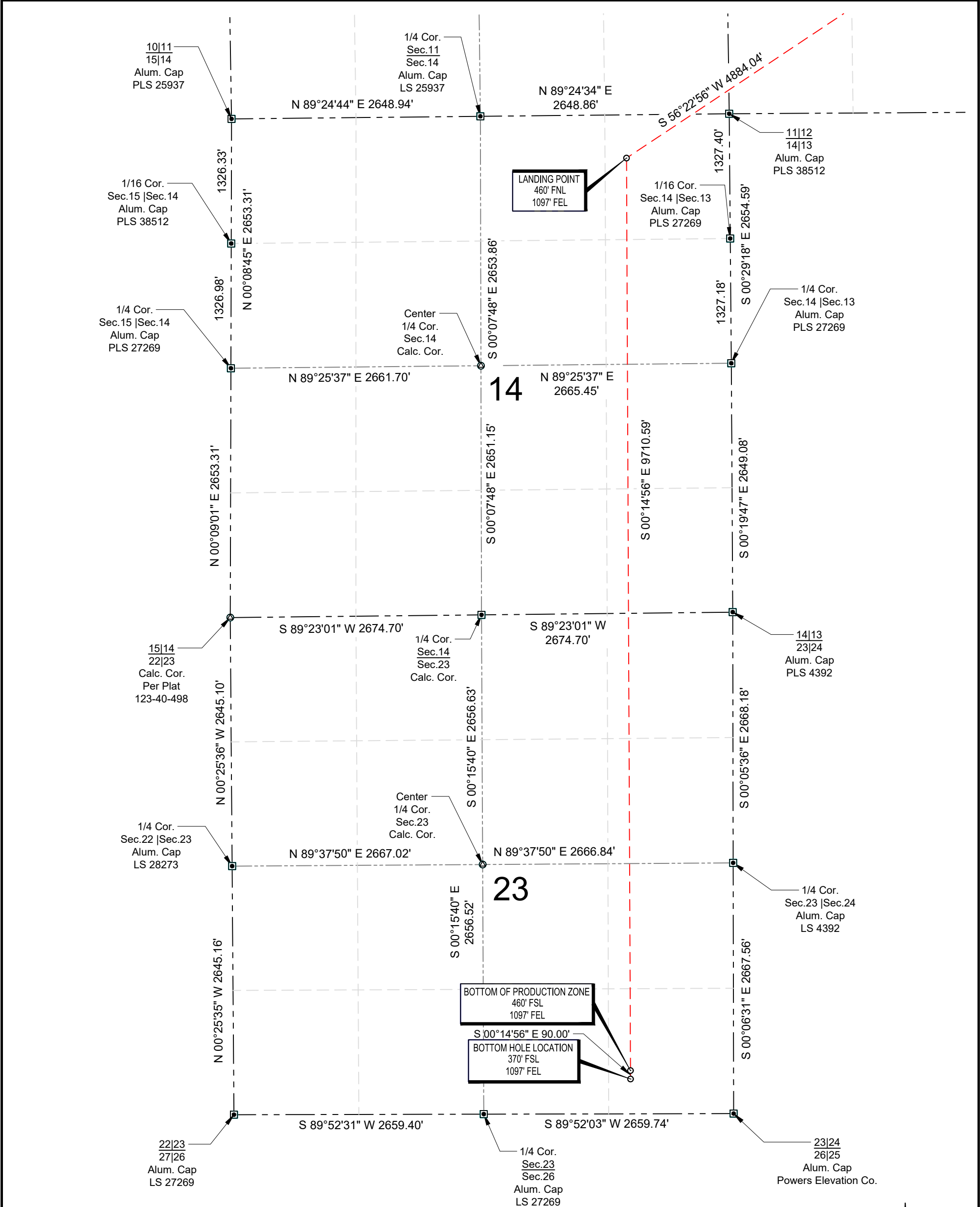
NOTES
1. HORIZONTAL (NAD 83) AND VERTICAL (NAVD 88) DATUM IS BASED ON THE TRIMBLE VRS NETWORK.
2. ALL DIRECTIONS, DISTANCES, AND DIMENSIONS SHOWN HEREON ARE BASED ON COORDINATES FROM THE "COLORADO COORDINATE SYSTEM OF 1983 NORTH ZONE" (TITLE 38, ARTICLE 52 C.R.S.).
3. ALL SECTION LINE DIMENSIONS SHOWN HEREON ARE BASED ON FIELD MEASUREMENTS OF EXISTING MONUMENTS AND/OR PHYSICAL EVIDENCE FOUND IN THE FIELD UNLESS OTHERWISE INDICATED.
4. PHYSICAL FEATURES SHOWN HEREON ARE FOR GRAPHICAL REPRESENTATION ONLY.
5. SEE FORM 2A FOR VISIBLE IMPROVEMENTS WITHIN 500' OF WELLHEAD.
6. DISTANCES TO NEAREST SECTION LINES ARE MEASURED PERPENDICULARLY.
7. THIS IS NOT A LAND SURVEY NOR LAND SURVEY PLAT.
PDOP READING: 1.6 INSTRUMENT OPERATOR: J. PHILLIPS

VERDAD RESOURCES RAMEN 1423 07H			
FIELD	07/22/2022	DRAFT	SW
REV 5	08/16/2023	CHECK	KW
SHEET : 1 OF 2		JOB: 149662	

POINT	NAD 83		NAD 27	
SURFACE HOLE LOCATION	N:	1267694.56	N:	267697.36
	E:	3248858.43	E:	2249010.02
	LAT:	N40.0647864	LAT:	N40.0648034
	LONG:	W104.6108476	LONG:	W104.6103291
LANDING POINT LOCATION	N:	1264990.51	N:	264993.31
	E:	3244791.24	E:	2244942.95
	LAT:	N40.0574747	LAT:	N40.0574916
	LONG:	W104.6254737	LONG:	W104.6249545
BOTTOM OF PRODUCTION ZONE	N:	1255280.02	N:	255282.92
	E:	3244833.43	E:	2244985.22
	LAT:	N40.0308178	LAT:	N40.0308346
	LONG:	W104.6256650	LONG:	W104.6251457
BOTTOM HOLE LOCATION	N:	1255190.02	N:	255192.92
	E:	3244833.83	E:	2244985.61
	LAT:	N40.0305708	LAT:	N40.0305875
	LONG:	W104.6256668	LONG:	W104.6251475



WELL LOCATION MAP
S.H.L. NW/4 SE/4, SECTION 12 T01N R65W 6TH PM
LP NE/4 NE/4, SECTION 14 T01N R65W 6TH PM
BPZ SE/4 SE/4, SECTION 23 T01N R65W 6TH PM
BHL SE/4 SE/4, SECTION 23 T01N R65W 6TH PM
WELD COUNTY, COLORADO

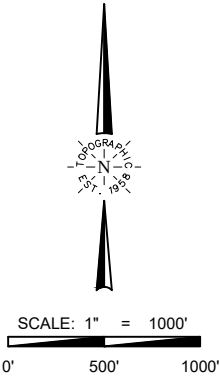
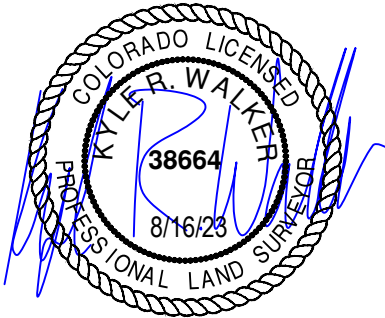




TOPOGRAPHIC
LOYALTY INNOVATION LEGACY
520 Stacy Court Ste B, Lafayette, CO 80026
303.666.0379 www.topographic.com

SURVEYOR'S STATEMENT
THE UNDERSIGNED HEREBY STATES THAT THE WELL LOCATION SHOWN HEREON WAS STAKED ON THE GROUND BASED ON EXISTING MONUMENTATION AND/OR PHYSICAL EVIDENCE FOUND IN THE FIELD AND IS CORRECT TO THE BEST OF MY KNOWLEDGE, INFORMATION AND BELIEF.

- NOTES**
1. HORIZONTAL (NAD 83) AND VERTICAL (NAVD 88) DATUM IS BASED ON THE TRIMBLE VRS NETWORK. THE LINEAL UNITS OF MEASUREMENT ARE U.S. SURVEY FEET.
 2. ALL DIRECTIONS, DISTANCES, AND DIMENSIONS SHOWN HEREON ARE BASED ON COORDINATES FROM THE "COLORADO COORDINATE SYSTEM OF 1983 NORTH ZONE" (TITLE 38, ARTICLE 52 C.R.S.).
 3. ALL SECTION LINE DIMENSIONS SHOWN HEREON ARE BASED ON FIELD MEASUREMENTS OF EXISTING MONUMENTS AND/OR PHYSICAL EVIDENCE FOUND IN THE FIELD UNLESS OTHERWISE INDICATED.
 4. PHYSICAL FEATURES SHOWN HEREON ARE FOR GRAPHICAL REPRESENTATION ONLY.
 5. SEE FORM 2A FOR VISIBLE IMPROVEMENTS WITHIN 500' OF WELLHEAD.
 6. DISTANCES TO NEAREST SECTION LINES ARE MEASURED PERPENDICULARLY.
 7. THIS IS NOT A LAND SURVEY NOR LAND SURVEY PLAT.
- PDOP READING: 1.6 INSTRUMENT OPERATOR: J. PHILLIPS



VERDAD RESOURCES RAMEN 1423 07H			
FIELD	07/22/2022	DRAFT	SW
REV 5	08/16/2023	CHECK	KW
SHEET : 2 OF 2		JOB: 149662	

WELL LOCATION MAP
S.H.L. NW/4 SE/4, SECTION 12 T01N R65W 6TH PM
LP NE/4 NE/4, SECTION 14 T01N R65W 6TH PM
BPZ SE/4 SE/4, SECTION 23 T01N R65W 6TH PM
BHL SE/4 SE/4, SECTION 23 T01N R65W 6TH PM
WELD COUNTY, COLORADO