

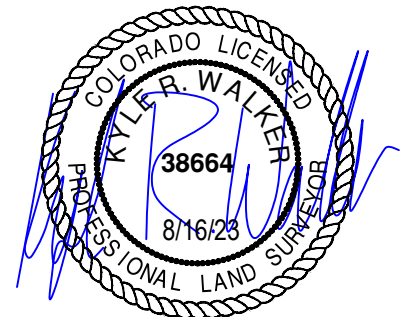
TOPOGRAPHIC
LOYALTY INNOVATION LEGACY
520 Stacy Court Ste B, Lafayette, CO 80026
303.666.0379 www.topographic.com

VERDAD RESOURCES RAMEN 1423 05H			
FIELD	07/22/2022	DRAFT	SW
REV 5	08/16/2023	CHECK	KW
SHEET : 1 OF 1		JOB: 149662	

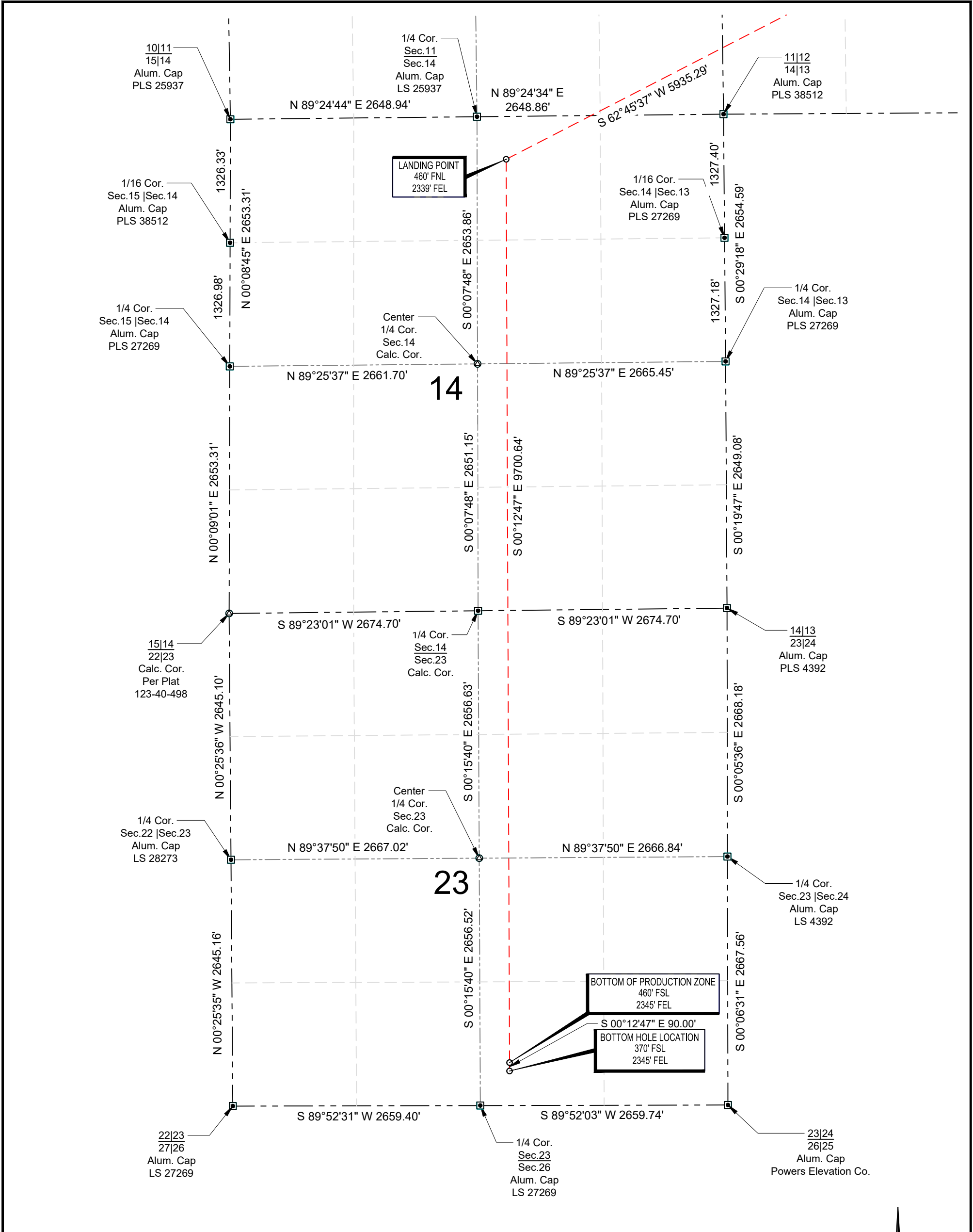
SURVEYOR'S STATEMENT
THE UNDERSIGNED HEREBY STATES THAT THE WELL LOCATION SHOWN HEREON WAS STAKED ON THE GROUND BASED ON EXISTING MONUMENTATION AND/OR PHYSICAL EVIDENCE FOUND IN THE FIELD AND IS CORRECT TO THE BEST OF MY KNOWLEDGE, INFORMATION AND BELIEF.

NOTES
1. HORIZONTAL (NAD 83) AND VERTICAL (NAVD 88) DATUM IS BASED ON THE TRIMBLE VRS NETWORK.
2. ALL DIRECTIONS, DISTANCES, AND DIMENSIONS SHOWN HEREON ARE BASED ON COORDINATES FROM THE "COLORADO COORDINATE SYSTEM OF 1983 NORTH ZONE" (TITLE 38, ARTICLE 52 C.R.S.).
3. ALL SECTION LINE DIMENSIONS SHOWN HEREON ARE BASED ON FIELD MEASUREMENTS OF EXISTING MONUMENTS AND/OR PHYSICAL EVIDENCE FOUND IN THE FIELD UNLESS OTHERWISE INDICATED.
4. PHYSICAL FEATURES SHOWN HEREON ARE FOR GRAPHICAL REPRESENTATION ONLY.
5. SEE FORM 2A FOR VISIBLE IMPROVEMENTS WITHIN 500' OF WELLHEAD.
6. DISTANCES TO NEAREST SECTION LINES ARE MEASURED PERPENDICULARLY.
7. THIS IS NOT A LAND SURVEY NOR LAND SURVEY PLAT.
PDOP READING: 1.6 INSTRUMENT OPERATOR: J. PHILLIPS

POINT	NAD 83	NAD 27
SURFACE HOLE LOCATION	N: 1267694.37	N: 267697.17
	E: 3248826.43	E: 2248978.03
	LAT: N40.0647867	LAT: N40.0648037
	LONG: W104.6109619	LONG: W104.6104434
LANDING POINT LOCATION	N: 1264977.71	N: 264980.50
	E: 3243549.36	E: 2243701.09
	LAT: N40.0574731	LAT: N40.0574900
	LONG: W104.6299105	LONG: W104.6293911
BOTTOM OF PRODUCTION ZONE	N: 1255277.13	N: 255280.02
	E: 3243585.44	E: 2243737.25
	LAT: N40.0308436	LAT: N40.0308603
	LONG: W104.6301216	LONG: W104.6296021
BOTTOM HOLE LOCATION	N: 1255187.13	N: 255190.03
	E: 3243585.77	E: 2243737.59
	LAT: N40.0305965	LAT: N40.0306133
	LONG: W104.6301235	LONG: W104.6296040



WELL LOCATION MAP
S.H.L.NW/4 SE/4, SECTION 12 T01N R65W 6TH PM
LP NW/4 NE/4, SECTION 14 T01N R65W 6TH PM
BPZ SW/4 SE/4, SECTION 23 T01N R65W 6TH PM
BHL SW/4 SE/4, SECTION 23 T01N R65W 6TH PM
WELD COUNTY, COLORADO

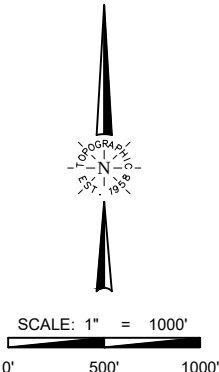
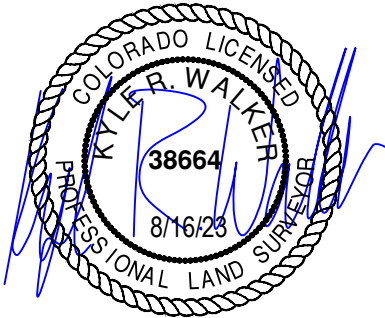




TOPOGRAPHIC
LOYALTY INNOVATION LEGACY
520 Stacy Court Ste B, Lafayette, CO 80026
303.666.0379 www.topographic.com

SURVEYOR'S STATEMENT
THE UNDERSIGNED HEREBY STATES THAT THE WELL LOCATION SHOWN HEREON WAS STAKED ON THE GROUND BASED ON EXISTING MONUMENTATION AND/OR PHYSICAL EVIDENCE FOUND IN THE FIELD AND IS CORRECT TO THE BEST OF MY KNOWLEDGE, INFORMATION AND BELIEF.

- NOTES**
- HORIZONTAL (NAD 83) AND VERTICAL (NAVD 88) DATUM IS BASED ON THE TRIMBLE VRS NETWORK. THE LINEAL UNITS OF MEASUREMENT ARE U.S. SURVEY FEET.
 - ALL DIRECTIONS, DISTANCES, AND DIMENSIONS SHOWN HEREON ARE BASED ON COORDINATES FROM THE "COLORADO COORDINATE SYSTEM OF 1983 NORTH ZONE" (TITLE 38, ARTICLE 52 C.R.S.).
 - ALL SECTION LINE DIMENSIONS SHOWN HEREON ARE BASED ON FIELD MEASUREMENTS OF EXISTING MONUMENTS AND/OR PHYSICAL EVIDENCE FOUND IN THE FIELD UNLESS OTHERWISE INDICATED.
 - PHYSICAL FEATURES SHOWN HEREON ARE FOR GRAPHICAL REPRESENTATION ONLY.
 - SEE FORM 2A FOR VISIBLE IMPROVEMENTS WITHIN 500' OF WELLHEAD.
 - DISTANCES TO NEAREST SECTION LINES ARE MEASURED PERPENDICULARLY.
 - THIS IS NOT A LAND SURVEY NOR LAND SURVEY PLAT.
- PDOP READING: 1.6 INSTRUMENT OPERATOR: J. PHILLIPS



VERDAD RESOURCES RAMEN 1423 05H			
FIELD	07/22/2022	DRAFT	SW
REV 5	08/16/2023	CHECK	KW
SHEET : 1 OF 1		JOB: 149662	

WELL LOCATION MAP
S.H.L. NW/4 SE/4, SECTION 12 T01N R65W 6TH PM
LP NW/4 NE/4, SECTION 14 T01N R65W 6TH PM
BPZ SW/4 SE/4, SECTION 23 T01N R65W 6TH PM
BHL SW/4 SE/4, SECTION 23 T01N R65W 6TH PM
WELD COUNTY, COLORADO