

**LEGEND**

- RANGE/TOWNSHIP LINE
- SECTION LINE
- QUARTER SECTION LINE
- SIXTEENTH SECTION LINE
- POINT OF INTERSECTION
- MONUMENT FOUND
- ⊙ CALCULATED CORNER

**TOPOGRAPHIC**  
LOYALTY INNOVATION LEGACY  
520 Stacy Court Ste B, Lafayette, CO 80026  
303.666.0379 www.topographic.com

VERDAD RESOURCES RAMEN 1423 02H			
FIELD	07/22/2022	DRAFT	KRW
REV 6	08/16/2023	CHECK	ZAK
SHEET : 1 OF 1		JOB: 149662	

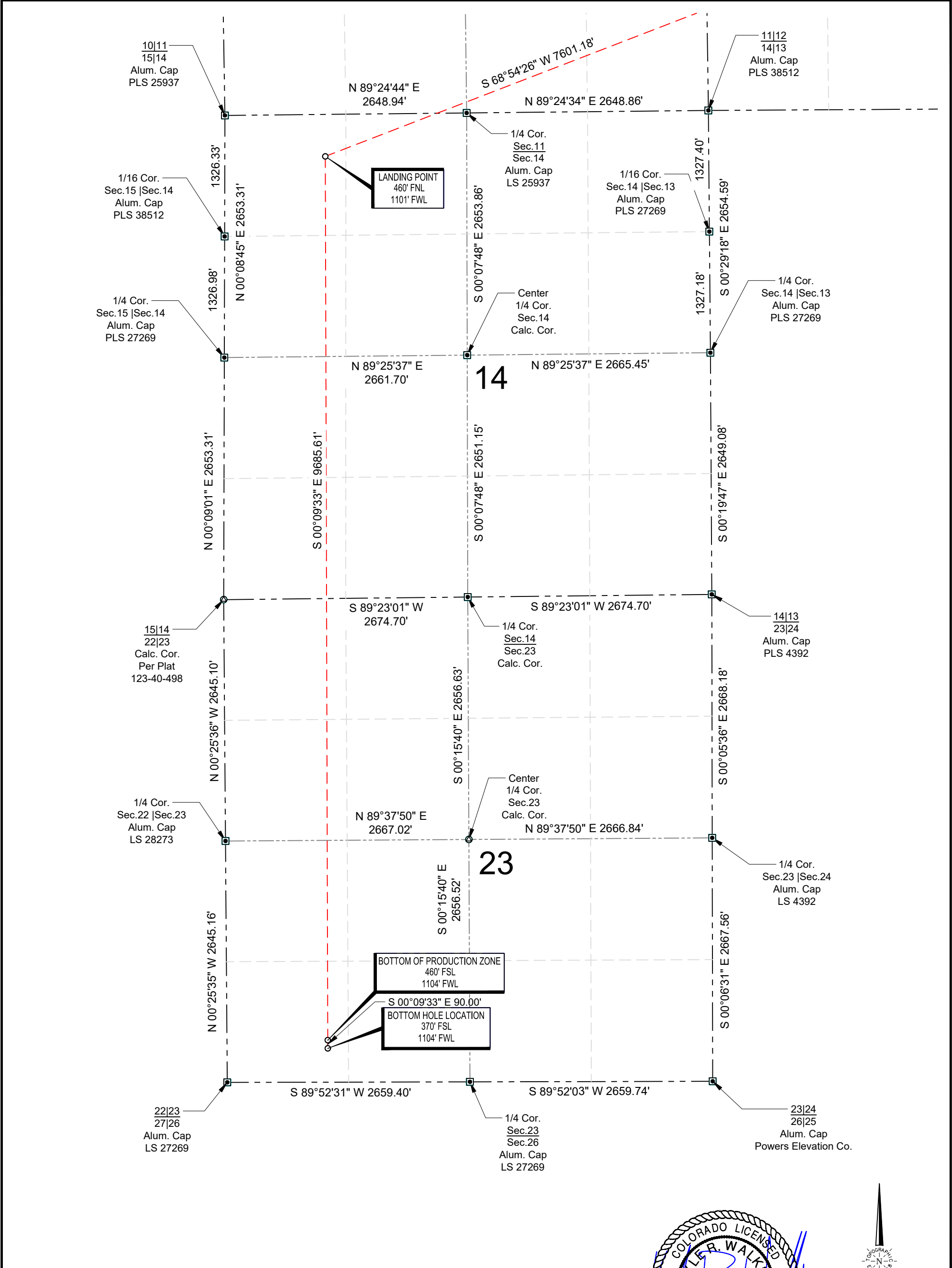
**SURVEYOR'S STATEMENT**  
THE UNDERSIGNED HEREBY STATES THAT THE WELL LOCATION SHOWN HEREON WAS STAKED ON THE GROUND BASED ON EXISTING MONUMENTATION AND/OR PHYSICAL EVIDENCE FOUND IN THE FIELD AND IS CORRECT TO THE BEST OF MY KNOWLEDGE, INFORMATION AND BELIEF.

**NOTES**  
1. HORIZONTAL (NAD 83) AND VERTICAL (NAVD 88) DATUM IS BASED ON THE TRIMBLE VRS NETWORK.  
2. ALL DIRECTIONS, DISTANCES, AND DIMENSIONS SHOWN HEREON ARE BASED ON COORDINATES FROM THE "COLORADO COORDINATE SYSTEM OF 1983 NORTH ZONE" (TITLE 38, ARTICLE 52 C.R.S.).  
3. ALL SECTION LINE DIMENSIONS SHOWN HEREON ARE BASED ON FIELD MEASUREMENTS OF EXISTING MONUMENTS AND/OR PHYSICAL EVIDENCE FOUND IN THE FIELD UNLESS OTHERWISE INDICATED.  
4. PHYSICAL FEATURES SHOWN HEREON ARE FOR GRAPHICAL REPRESENTATION ONLY.  
5. SEE FORM 2A FOR VISIBLE IMPROVEMENTS WITHIN 500' OF WELLHEAD.  
6. DISTANCES TO NEAREST SECTION LINES ARE MEASURED PERPENDICULARLY.  
7. THIS IS NOT A LAND SURVEY NOR LAND SURVEY PLAT.  
PDOP READING: 1.6 INSTRUMENT OPERATOR: J. PHILLIPS

POINT	NAD 83		NAD 27	
SURFACE HOLE LOCATION	N:	1267694.08	N:	267696.88
	E:	3248778.43	E:	2248930.03
	LAT:	N40.0647872	LAT:	N40.0648042
	LONG:	W104.6111334	LONG:	W104.6106149
LANDING POINT LOCATION	N:	1264958.58	N:	264961.36
	E:	3241686.53	E:	2241838.30
	LAT:	N40.0574706	LAT:	N40.0574875
	LONG:	W104.6365658	LONG:	W104.6360461
BOTTOM OF PRODUCTION ZONE	N:	1255273.02	N:	255275.89
	E:	3241713.44	E:	2241865.29
	LAT:	N40.0308825	LAT:	N40.0308992
	LONG:	W104.6368065	LONG:	W104.6362867
BOTTOM HOLE LOCATION	N:	1255183.02	N:	255185.90
	E:	3241713.69	E:	2241865.54
	LAT:	N40.0306355	LAT:	N40.0306522
	LONG:	W104.6368087	LONG:	W104.6362889



**WELL LOCATION MAP**  
S.H.L.NW/4 SE/4, SECTION 12 T01N R65W 6TH PM  
LP NW/4 NW/4, SECTION 14 T01N R65W 6TH PM  
BPZ SW/4 SW/4, SECTION 23 T01N R65W 6TH PM  
BHL SW/4 SW/4, SECTION 23 T01N R65W 6TH PM  
WELD COUNTY, COLORADO

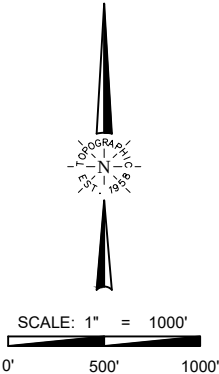
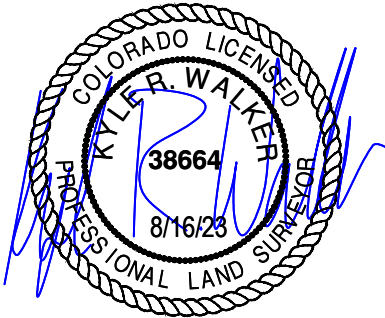




**TOPOGRAPHIC**  
LOYALTY INNOVATION LEGACY  
520 Stacy Court Ste B, Lafayette, CO 80026  
303.666.0379 www.topographic.com

**SURVEYOR'S STATEMENT**  
THE UNDERSIGNED HEREBY STATES THAT THE WELL LOCATION SHOWN HEREON WAS STAKED ON THE GROUND BASED ON EXISTING MONUMENTATION AND/OR PHYSICAL EVIDENCE FOUND IN THE FIELD AND IS CORRECT TO THE BEST OF MY KNOWLEDGE, INFORMATION AND BELIEF.

- NOTES**
- HORIZONTAL (NAD 83) AND VERTICAL (NAVD 88) DATUM IS BASED ON THE TRIMBLE VRS NETWORK. THE LINEAL UNITS OF MEASUREMENT ARE U.S. SURVEY FEET.
  - ALL DIRECTIONS, DISTANCES, AND DIMENSIONS SHOWN HEREON ARE BASED ON COORDINATES FROM THE "COLORADO COORDINATE SYSTEM OF 1983 NORTH ZONE" (TITLE 38, ARTICLE 52 C.R.S.).
  - ALL SECTION LINE DIMENSIONS SHOWN HEREON ARE BASED ON FIELD MEASUREMENTS OF EXISTING MONUMENTS AND/OR PHYSICAL EVIDENCE FOUND IN THE FIELD UNLESS OTHERWISE INDICATED.
  - PHYSICAL FEATURES SHOWN HEREON ARE FOR GRAPHICAL REPRESENTATION ONLY.
  - SEE FORM 2A FOR VISIBLE IMPROVEMENTS WITHIN 500' OF WELLHEAD.
  - DISTANCES TO NEAREST SECTION LINES ARE MEASURED PERPENDICULARLY.
  - THIS IS NOT A LAND SURVEY NOR LAND SURVEY PLAT.
- PDOP READING: 1.6 INSTRUMENT OPERATOR: J. PHILLIPS



VERDAD RESOURCES			
RAMEN 1423 02H			
FIELD	07/22/2022	DRAFT	KRW
REV 6	08/16/2023	CHECK	ZAK
SHEET : 1 OF 1		JOB: 149662	

**WELL LOCATION MAP**  
S.H.L. NW/4 SE/4, SECTION 12 T01N R65W 6TH PM  
LP NW/4 NW/4, SECTION 14 T01N R65W 6TH PM  
BPZ SW/4 SW/4, SECTION 23 T01N R65W 6TH PM  
BHL SW/4 SW/4, SECTION 23 T01N R65W 6TH PM  
WELD COUNTY, COLORADO