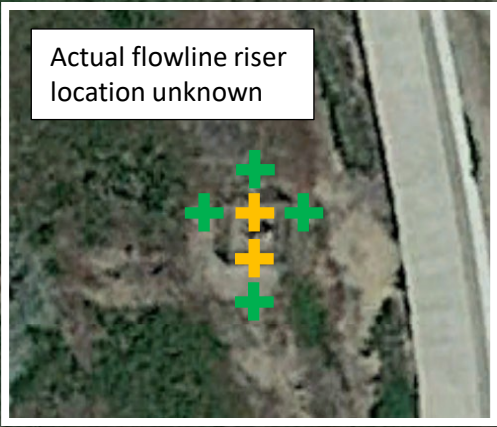


- + Field Screening and Laboratory Sample (Approximate)
- + Field Screening Sample (Approximate)
- Flowline Alignment (Inferred from COGIS records)



Bunn M 1-34 Wellhead




Bunn M 1-34 Separator Inlet Sample on Separate F27

200 ft

Project No:
Drawn By: CV
Date: 10/20/2023

Proposed Wellhead and Flowline Sampling Locations
 Bunn M 1-34 Wellhead and Flowline
 NESE Sec. 34 T6N R66W



1843 Sunlight Dr.
 Longmont, CO 80504
 303.378.4036

FIGURE
1