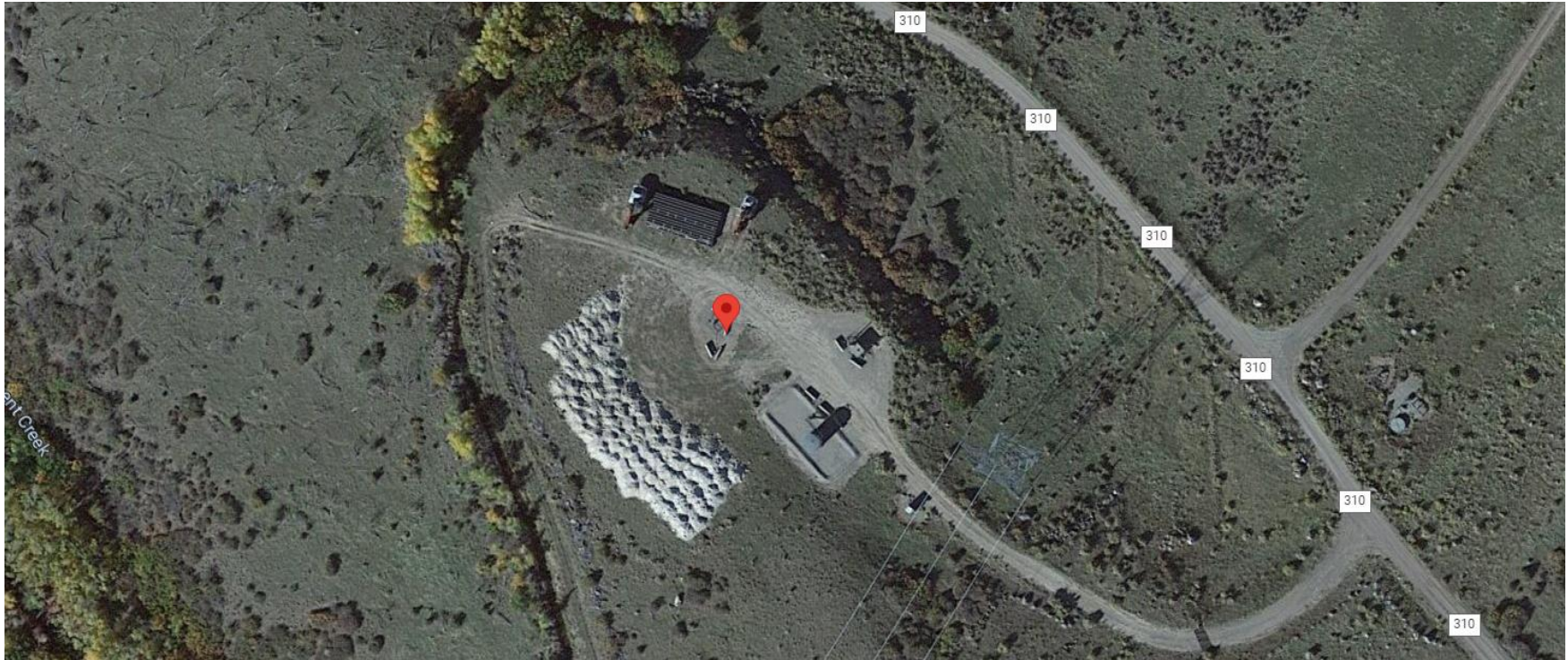


**Storm Water Management and Erosion control**  
**Location Name: CAERUS PICEANCE LLC CLEM 15-23 (PG15) Pad**  
**Location #: 324023**



**Location Overview: Location is within High Priority/Black Bear/Density/NSO Habitat areas. Location is approximately 162 yards from Battlement Creek. Location is within close proximity to Rule 411a Surface Water External Buffer.**

**Section/Township/Range: 15 7S95W**





**Storm water Management and Erosion control**  
**Location Name: CAERUS PICEANCE LLC CLEM 15-23 (PG15) Pad**  
**Location #: 324023**



**North West corner of location.**



**North East corner of location.**



**South West corner of location.**



**South East corner of location.**