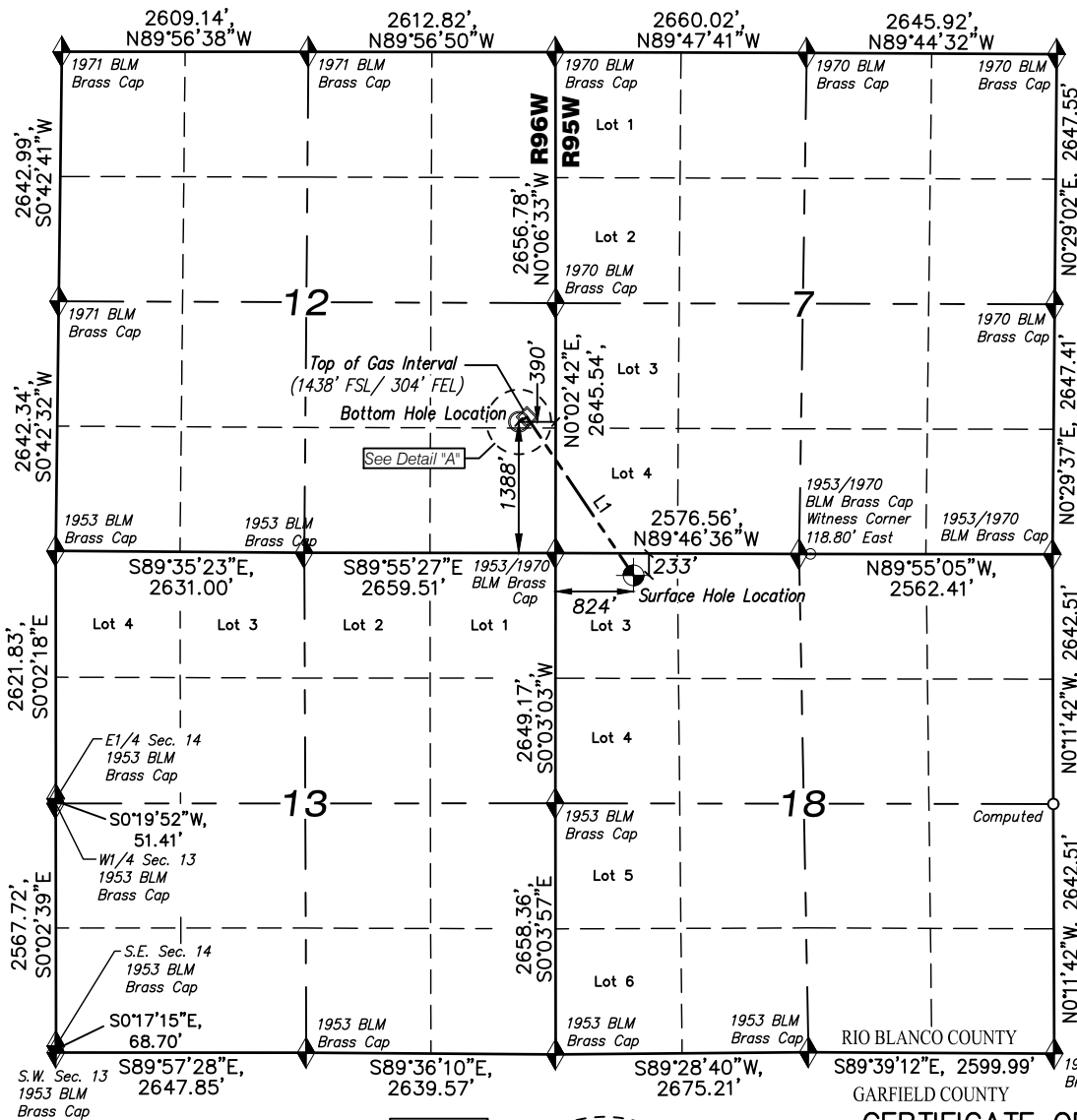


T4S, R96W, 6TH P.M.

T4S, R95W, 6TH P.M.



ELU A18 FED 24C-12 496 WELL
UNGRADED GROUND
ELEVATION = 8035.5'

NAD 83 (SURFACE LOCATION)
LAT: 39° 42' 32.50" N (39.709029 N)
LONG: 108° 06' 17.07" W (108.104742 W)

NAD27 (SURFACE LOCATION)
LAT: 39° 42' 32.59" N (39.709053 N)
LONG: 108° 06' 14.79" W (108.104107 W)

UTM NAD 27 (ZONE 12) US Feet
N: 14433260.51
E: 2454931.22

NAD 83 (BOTTOM HOLE LOCATION)
LAT: 39° 42' 48.55" N (39.713485 N)
LONG: 108° 06' 32.60" W (108.109055 W)

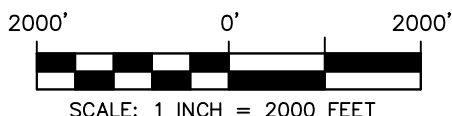
NAD27 (BOTTOM HOLE LOCATION)
LAT: 39° 42' 48.63" N (39.713510 N)
LONG: 108° 06' 30.31" W (108.108421 W)

UTM NAD 27 (ZONE 12) US Feet
N: 14434844.30
E: 2453665.50

NAD 83 (TOP OF GAS INTERVAL)
LAT: 39° 42' 49.04" N (39.713622 N)
LONG: 108° 06' 31.49" W (108.108748 W)

NAD27 (TOP OF GAS INTERVAL)
LAT: 39° 42' 49.13" N (39.713647 N)
LONG: 108° 06' 29.21" W (108.108113 W)

UTM NAD 27 (ZONE 12) US Feet
N: 14434897.07
E: 2453750.45



WASATCH SURVEYING ASSOCIATES
906 MAIN STREET, EVANSTON, WY 82930
(307) 789-4545



CAERUS OIL & GAS LLC

ELU A18 FED 24C-12 496 WELL
LOT 3 (NW1/4 NW1/4),
SECTION 18, T4S, R95W, 6TH P.M.
RIO BLANCO COUNTY, COLORADO

WELL LOCATION PLAT

SURVEYED BY: JT/BT	DATE: 5/06/22	
DRAWN BY: SGT	DATE: 10/05/23	PROJECT NO: 20-13-04