

Inspection Photos
Nuevida Resources Ardourel 33081718 3HL
API 067-10037



Photo #1 Tracking BMP installed during 9/8/2023 inspection.



Photo #2 Tracking pad BMPs not maintained.

Inspection Photos
Nuevida Resources Ardourel 33081718 3HL
API 067-10037



Photo #3 Impacted ground at northwest side of rig.



Photo #4 Impacted ground at west side of rig.

Inspection Photos
Nuevida Resources Ardourel 33081718 3HL
API 067-10037



Photo #5 Inspection 9/8/2023. Corrective action completed.
This impact has been cleaned.



Photo #6 New impact on west side of rig.

Inspection Photos
Nuevida Resources Ardourel 33081718 3HL
API 067-10037



Photo #7 Corrective action identified on 9/8/2023. Stacking of wattles not to accepted specifications.



Photo #8 Corrective action not completed. Wattles not installed/staked to accepted specifications.

Inspection Photos
Nuevida Resources Ardourel 33081718 3HL
API 067-10037



Photo #9 Corrective action identified, 9/8/2023. No perimeter wattle installation.



Photo #10 Corrective action not completed. No perimeter wattle installation along west side of well location.

Inspection Photos
Nuevida Resources Ardourel 33081718 3HL
API 067-10037



Photo #11 No perimeter wattles along west side of tank pad.



Photo #12 Wattle installation not to accepted specifications.

Inspection Photos
Nuevida Resources Ardourel 33081718 3HL
API 067-10037



Photo #13 No perimeter wattles along west side of tank pad.



Photo #14 Gulley erosion at northwest entrance to tank pad.

Inspection Photos
Nuevida Resources Ardourel 33081718 3HL
API 067-10037



Photo #15 Corrective action identified 9/8/2023. Wattles not installed/stacked to accepted specifications.



Photo #16 Corrective action not completed. Wattles not installed/stacked to accepted specifications.

Inspection Photos
Nuevida Resources Ardourel 33081718 3HL
API 067-10037



Photo #17 Wattle installation not to accepted specifications.



Photo #18 Wattle installation not to accepted specifications.

Inspection Photos
Nuevida Resources Ardourel 33081718 3HL
API 067-10037



Photo #19 Slope and soils not stabilized, southeast corner of well location.



Photo #20 Topsoil stockpile not being protected, equipment tracking atop stockpile and BMPs, no signage in this area.

Inspection Photos
Nuevida Resources Ardourel 33081718 3HL
API 067-10037



Photo #21 No perimeter wattle installation along east side of tank pad.



Photo #22 No perimeter wattle installation along east side of tank pad. Non-compacted windrowed soil next to surface drainage.

Inspection Photos
Nuevida Resources Ardourel 33081718 3HL
API 067-10037



Photo #23 No perimeter wattle installation along northwest side of tank pad.



Photo #24 No perimeter wattle installation, active gully erosion along northwest side of tank pad.

Inspection Photos
Nuevida Resources Ardourel 33081718 3HL
API 067-10037



Photo #25 Trash on ground along east side of well location.



Photo #26 Wattle installation not to accepted specifications, 2 stakes installed in a 50-ft. roll.

Inspection Photos
Nuevida Resources Ardourel 33081718 3HL
API 067-10037



Photo #27 Vertical dozer tracking, however slopes not stabilized.



Photo #28 Horizontal dozer tracking, slopes not stabilized.

Inspection Photos
Nuevida Resources Ardourel 33081718 3HL
API 067-10037



Photo #29 Visible erosion and sediment migration on 9/8/2023. Horizontal dozer tracks.



Photo #30 Corrective action not completed. Horizontal dozer tracks.

Inspection Photos
Nuevida Resources Ardourel 33081718 3HL
API 067-10037



Photo #31 Wattle installation not to accepted specifications, along east side of tank pad.



Photo #32 No perimeter wattle installation along north side of tank pad.

Inspection Photos
Nuevida Resources Ardourel 33081718 3HL
API 067-10037



Photo #33 Corrective action identified during 9/8/2023.



Photo #34 Oily rag within red circle on photo.

Inspection Photos
Nuevida Resources Ardourel 33081718 3HL
API 067-10037



Photo #35 Corrective action on 9/8/2023. Trash observed around the northeast portion of the location.



Photo #36 Oily rag at feet of worker, not properly disposed.

Inspection Photos
Nuevida Resources Ardourel 33081718 3HL
API 067-10037



Photo #37 Corrective action identified on 9/8/2023.



Photo #38 Cuttings removed, increase self-inspection, cuttings continue to escape storage bin.

Inspection Photos
Nuevida Resources Ardourel 33081718 3HL
API 067-10037



Photo #39 Drill cuttings spread across ground from shaker bin to storage bin.



Photo #40 No perimeter wattle installation along south side of well location.

Inspection Photos
Nuevida Resources Ardourel 33081718 3HL
API 067-10037



Photo #41 No perimeter wattle installation, unstable fill at entrance to well location.

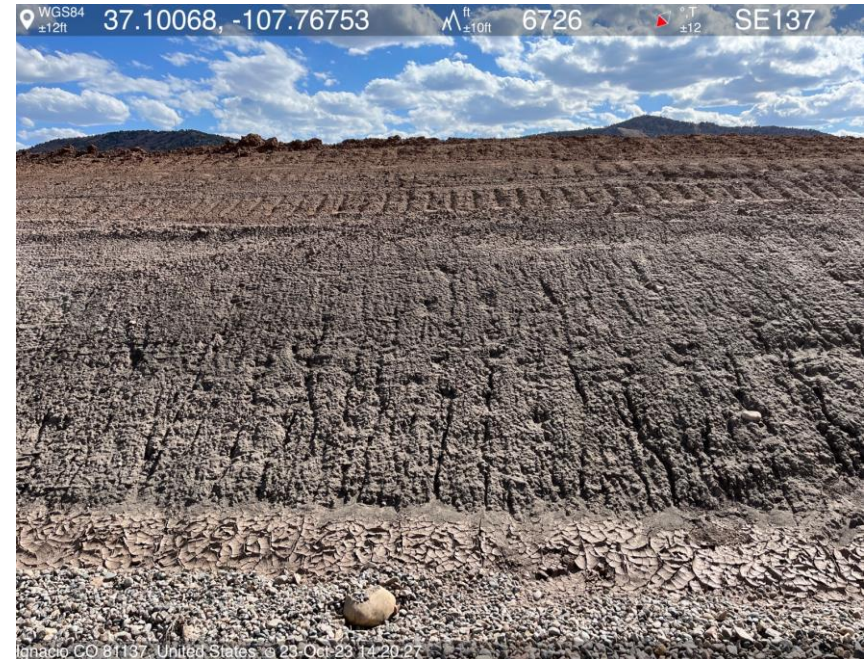


Photo # 42 Rill erosion and sediment migration along north side of well location.

Inspection Photos
Nuevida Resources Ardourel 33081718 3HL
API 067-10037



Photo #43 Corrective action identified on 9/8/2023. No contents labeling.



Photo # 44 6-400 bbl tanks in containment on north side of rig, no contents labeling.

Inspection Photos
Nuevida Resources Ardourel 33081718 3HL
API 067-10037



Photo #45 Unsatisfactory spill response, impacted ground at southeast side of rig.



Photo #46 Oily rag not properly disposed.

Inspection Photos
Nuevida Resources Ardourel 33081718 3HL
API 067-10037



Photo #47 Impacted ground from leaky equipment.

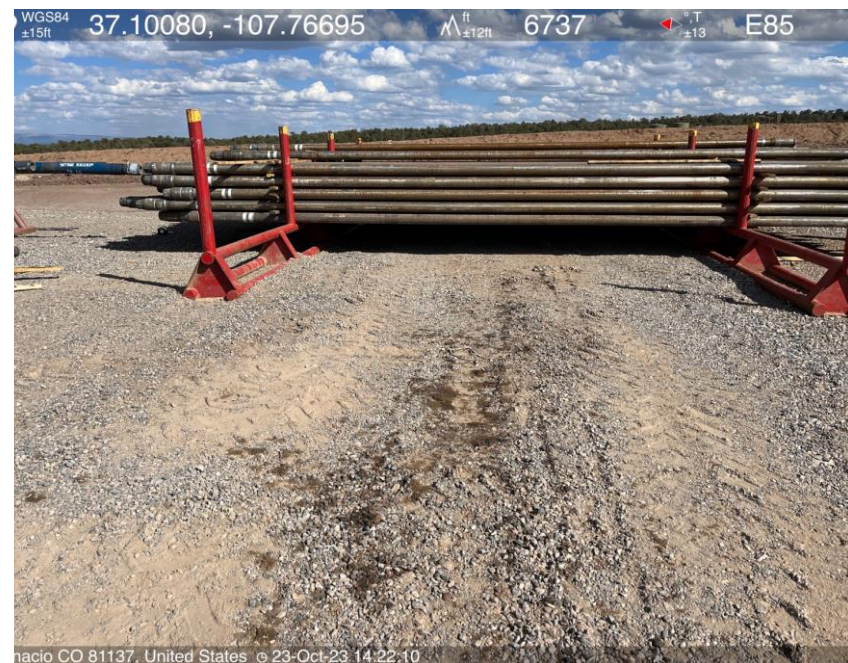


Photo #48 Impacted ground from leaky equipment.

Inspection Photos
Nuevida Resources Ardourel 33081718 3HL
API 067-10037



Photo #49 Oily rag not properly disposed, on ground.



Photo #50 Improper wattle installation, trash on ground along north side of well location.