



**RADIAL BOND TOOL
GAMMA RAY
CCL**

Company CHEVRON
Well BURMAN C 05-23D
Field WATTENBERG
County WELD
State CO Country USA

Location: API #: 05-123-34338
NESE
LAT. 40.339110 LONG. -104.568400
SEC 5 TWP 4N RGE 64W
Permanent Datum GL Elevation 4749'
Log Measured From KB 14'
Drilling Measured From KB
Other Services
K.B. 4763'
D.F. 4762'
G.L. 4749'

Date 6-23-2022
Run Number ONE
Depth Driller 7601'
Depth Logger 2004'
Bottom Logged Interval 2000'
Top Log Interval SURFACE
Open Hole Size 8.625"
Type Fluid WATER
Density / Viscosity NA
Max. Recorded Temp. 92.5 °F
Estimated Cement Top
Time Well Ready ON ARRIVAL
Time Logger on Bottom NA
Equipment Number 3815
Location GREELEY, CO
Recorded By J. KERR
Witnessed By D. RUSSELL

| Borehole Record | | | | Tubing Record | | | |
|-----------------|-----|------|----|---------------|--------|------|----|
| Run Number | Bit | From | To | Size | Weight | From | To |
| | | | | | | | |
| | | | | | | | |
| | | | | | | | |
| | | | | | | | |


Casing Record
Surface String 8.625" Size Wgt/Ft 24# Top Bottom SURFACE SURFACE 650'
Prot. String
Production String 4.5" 11.6# SURFACE SURFACE 7601'
Liner

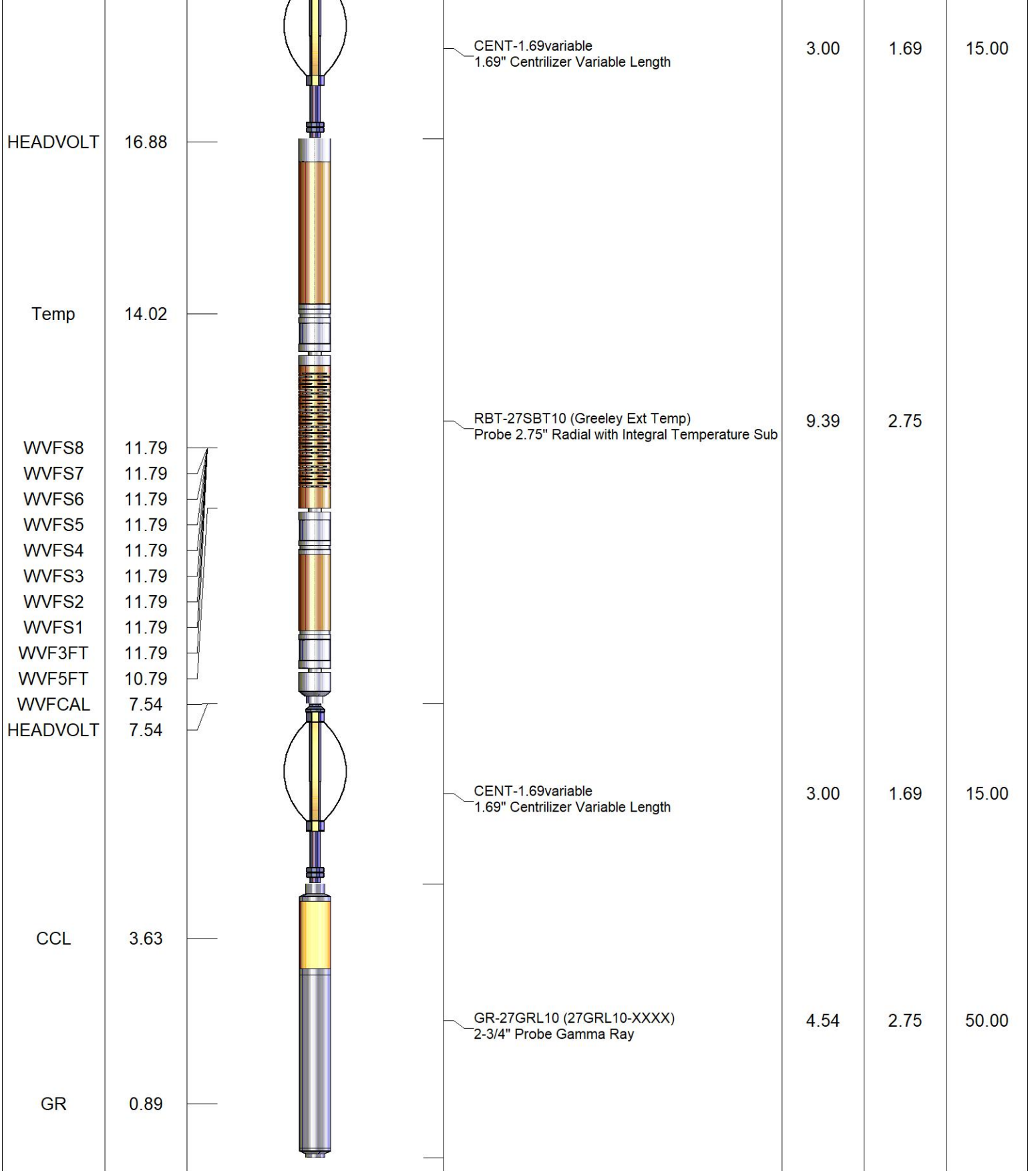
<<< Fold Here >>>

All interpretations are opinions based on inferences from electrical or other measurements and we cannot and do not guarantee the accuracy or correctness of any interpretation, and we shall not, except in the case of gross or willful negligence on our part, be liable or responsible for any loss, costs, damages, or expenses incurred or sustained by anyone resulting from any interpretation made by any of our officers, agents or employees. These interpretations are also subject to our general terms and conditions set out in our current Price Schedule.

Comments

**RAN CBL TO VERIFY CEMENT BOND
WELL LOADED UPON ARRIVAL**

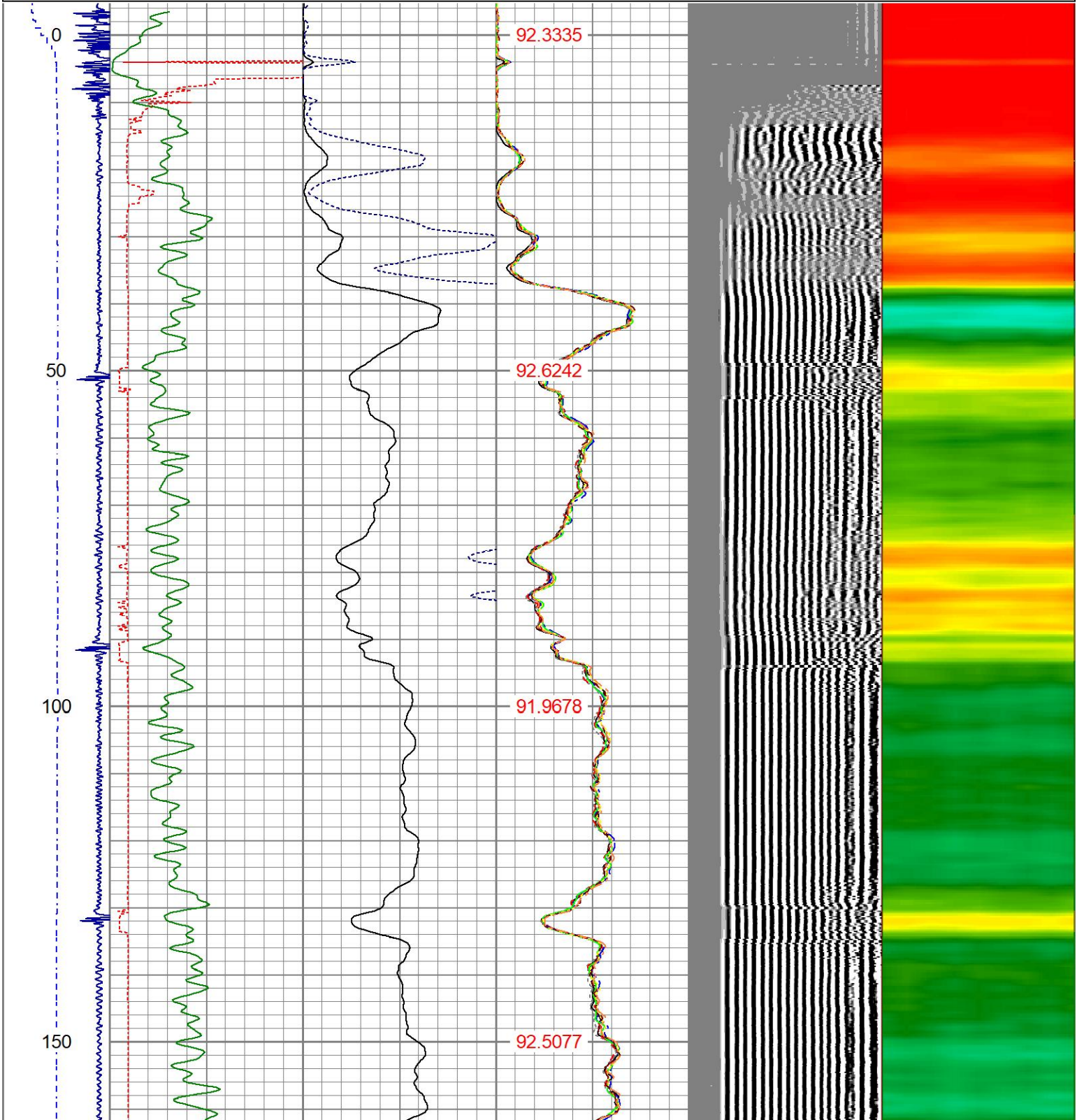
| Sensor | Offset (ft) | Schematic | Description | Length (ft) | O.D. (in) | Weight (lb) |
|--------|-------------|---|--|-------------|-----------|-------------|
| | |  | CHD-1_11/16_Cablehead 1 11/16 Cablehead | 1.00 | 1.68 | 5.00 |

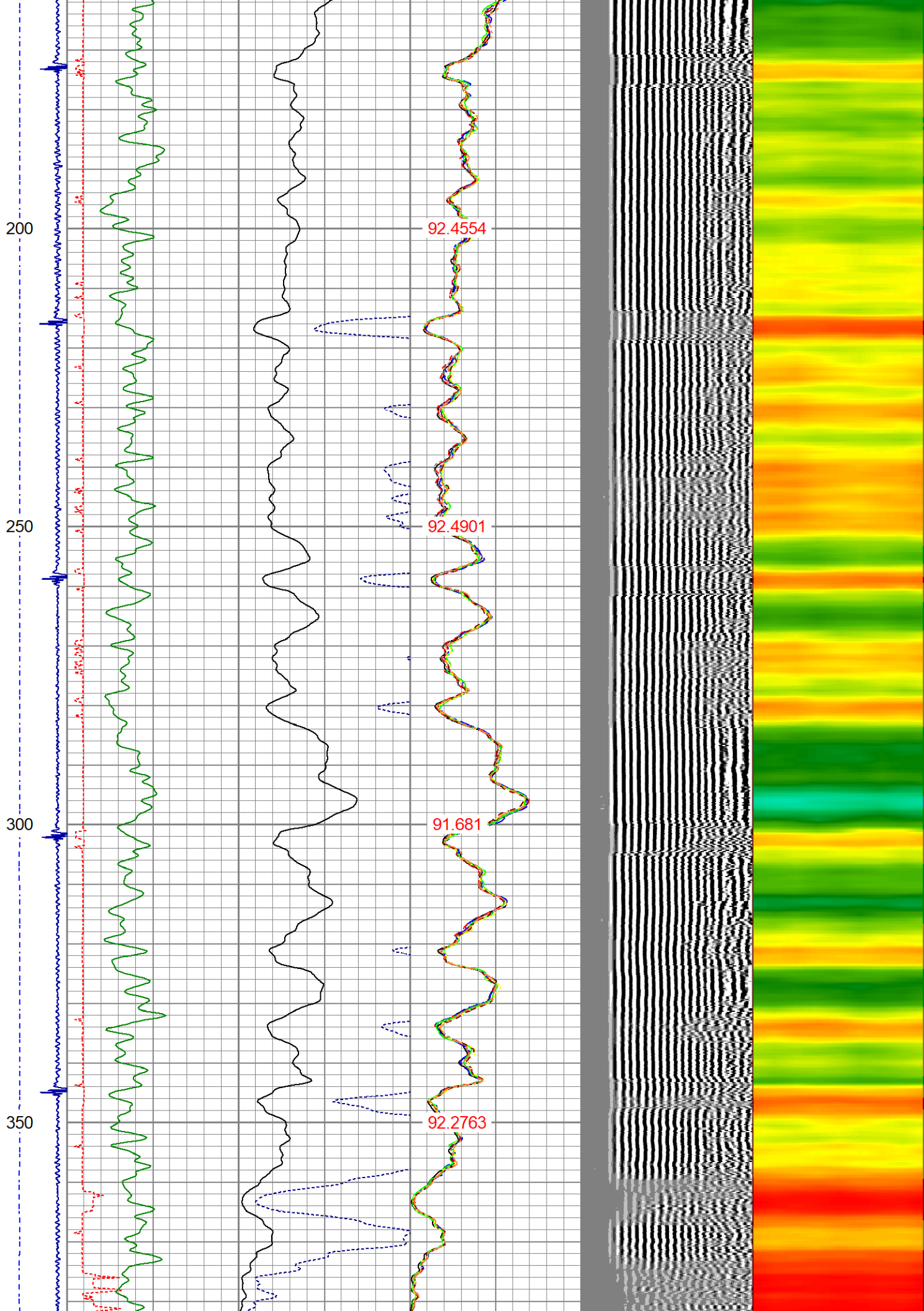


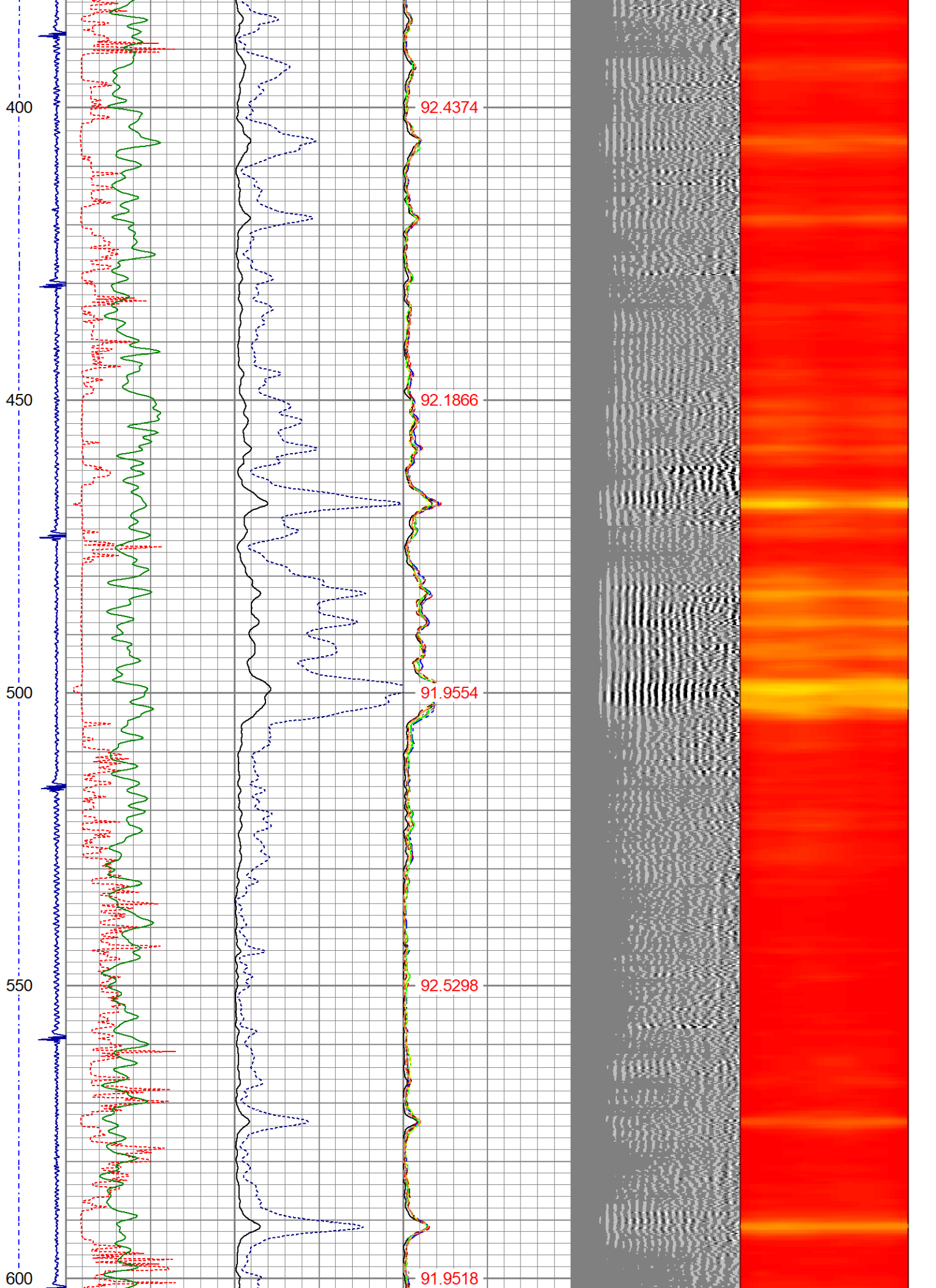
Dataset: burman c05-23d.db: field/well/run1/pass5
 Total length: 20.93 ft
 Total weight: 85.00 lb
 O.D.: 2.75 in

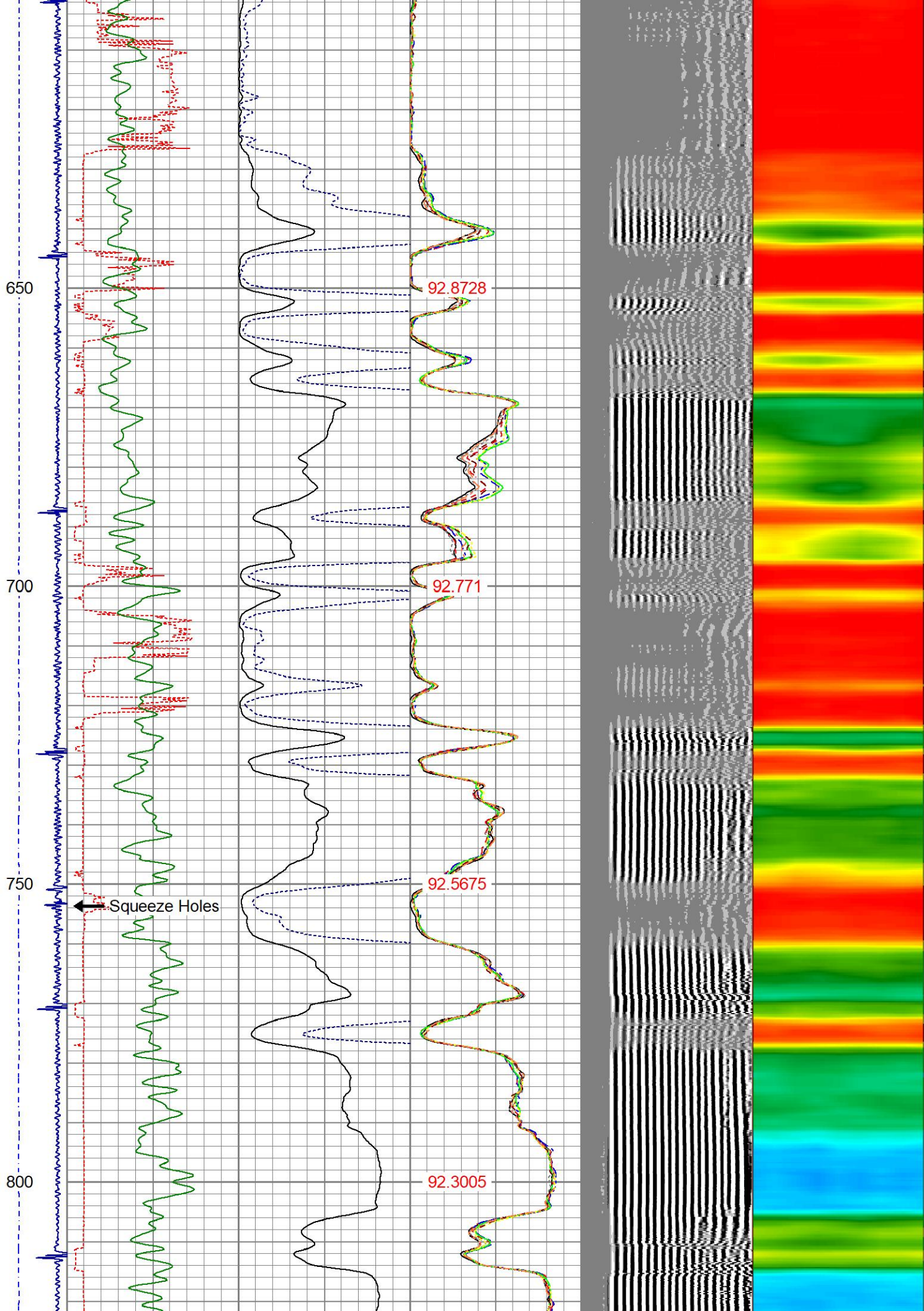
Database File burman c05-23d.db
 Dataset Pathname pass5
 Presentation Format ips_rbtcolor
 Dataset Creation Thu Jun 23 09:28:28 2022
 Charted by Depth in Feet scaled 1:240

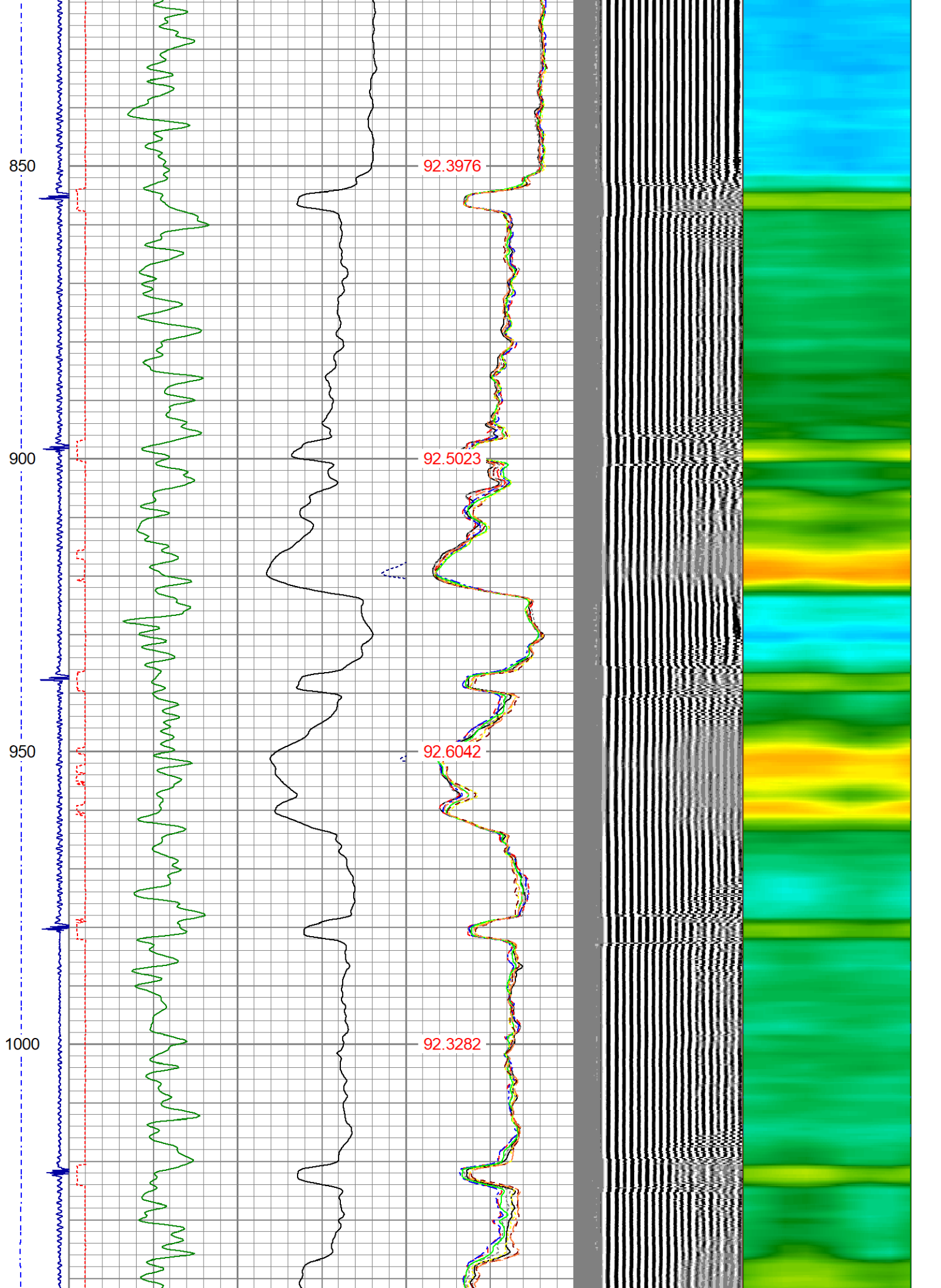
| | | | | | | | | | | | | | | | | | | |
|----|----------|-----|-----|-----------|------|---|------------|-----|---|--------|-----|-----|------------|------|---|------------|---|--|
| -9 | CCL | 1 | 200 | TT (usec) | 1000 | 0 | AMP (mV) | 100 | 0 | AMPS1 | 100 | 200 | VDL (usec) | 1200 | 1 | Cement Map | 8 | |
| | LSPD | | 0 | GR (GAPI) | 200 | 0 | AMPx5 (mV) | 20 | 0 | AMPS2 | 100 | | | | | | | |
| | (ft/min) | | 200 | GR (GAPI) | 400 | | | | | AMPS3 | 100 | | | | | | | |
| 0 | | 250 | | | | | | | | AMPS4 | 100 | | | | | | | |
| | | | | | | | | | | AMPS5 | 100 | | | | | | | |
| | | | | | | | | | | AMPS6 | 100 | | | | | | | |
| | | | | | | | | | | AMPS7 | 100 | | | | | | | |
| | | | | | | | | | | AMPS8 | 100 | | | | | | | |
| | | | | | | | | | | TEMP | | | | | | | | |
| | | | | | | | | | | (degF) | | | | | | | | |

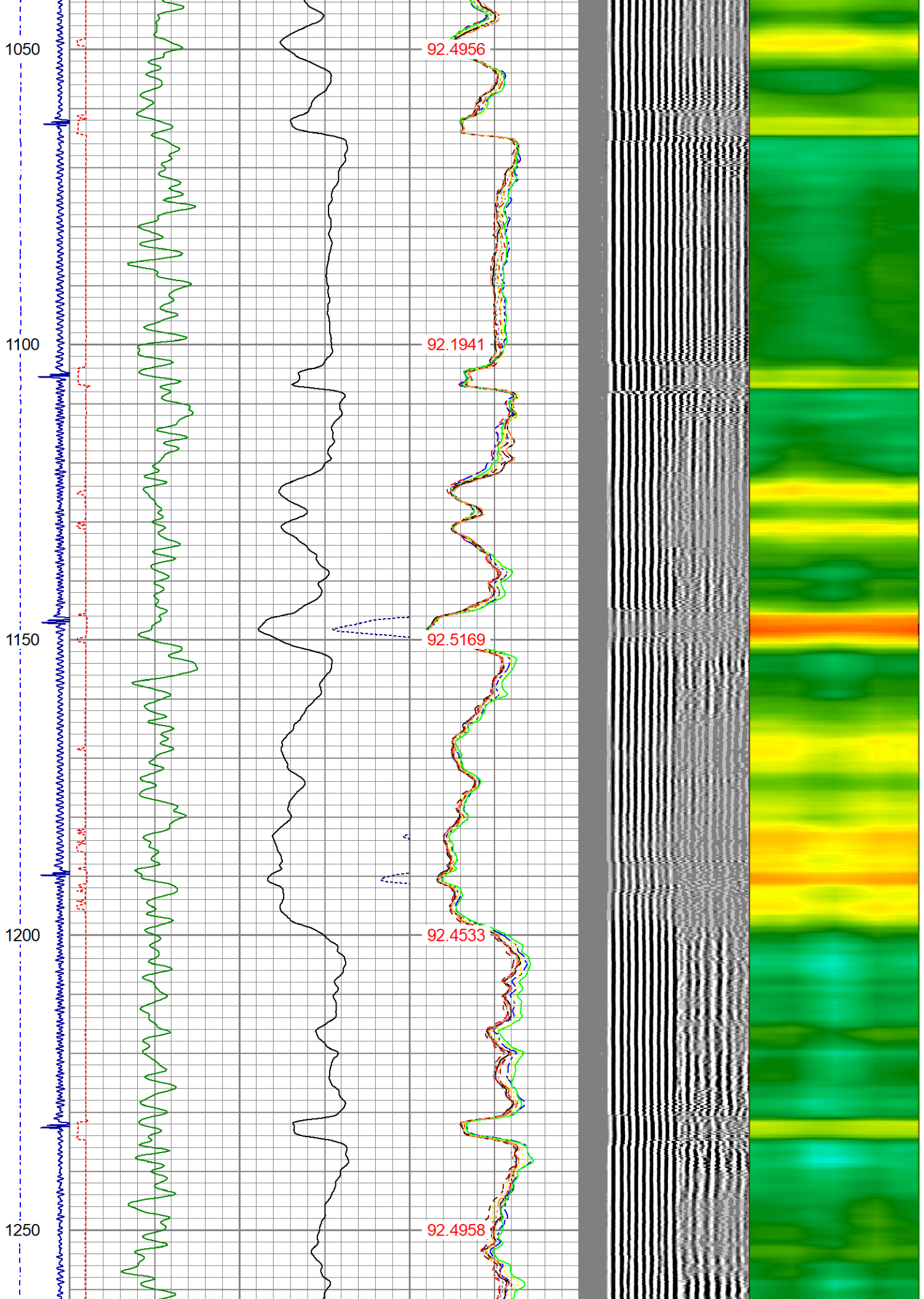


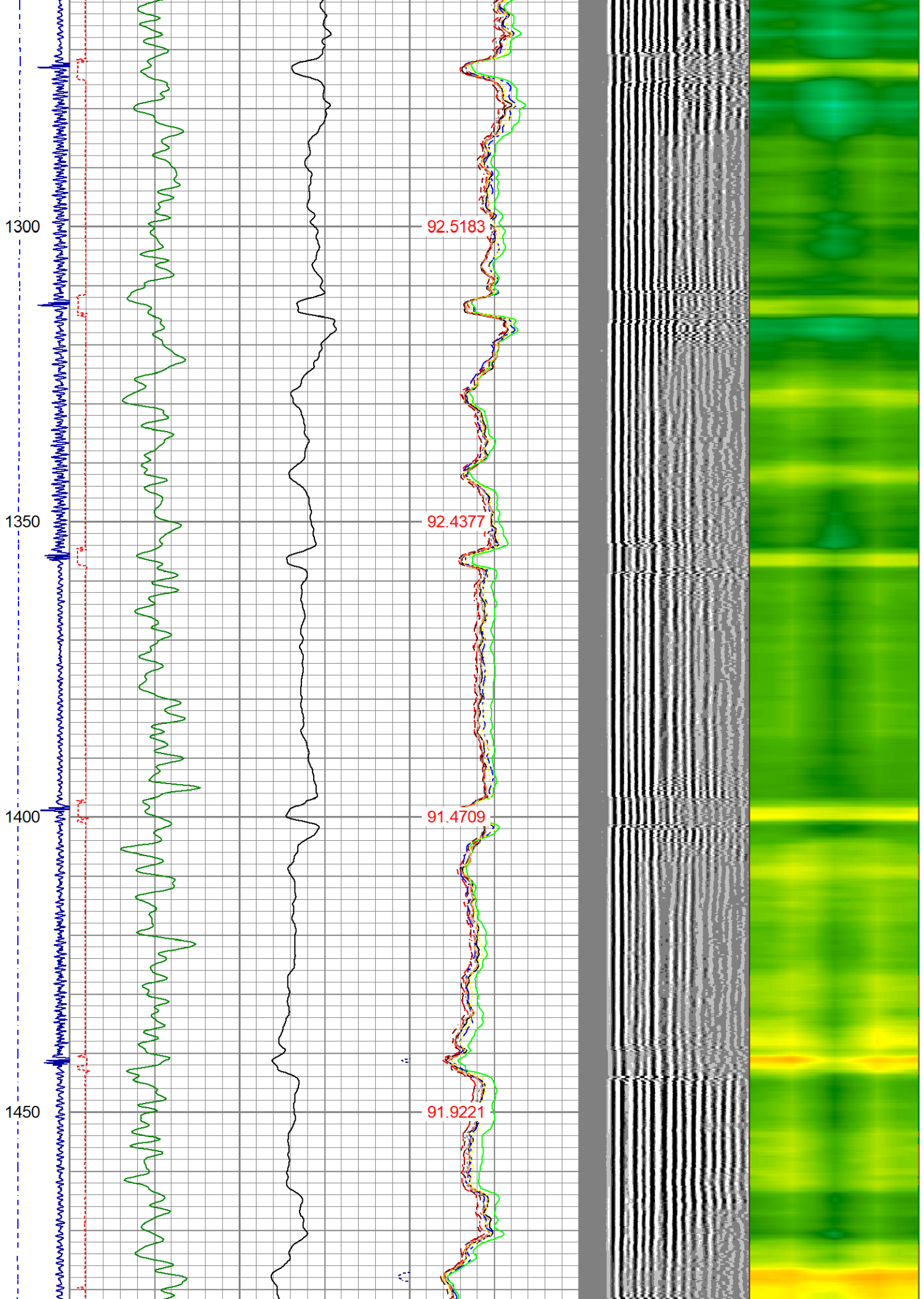


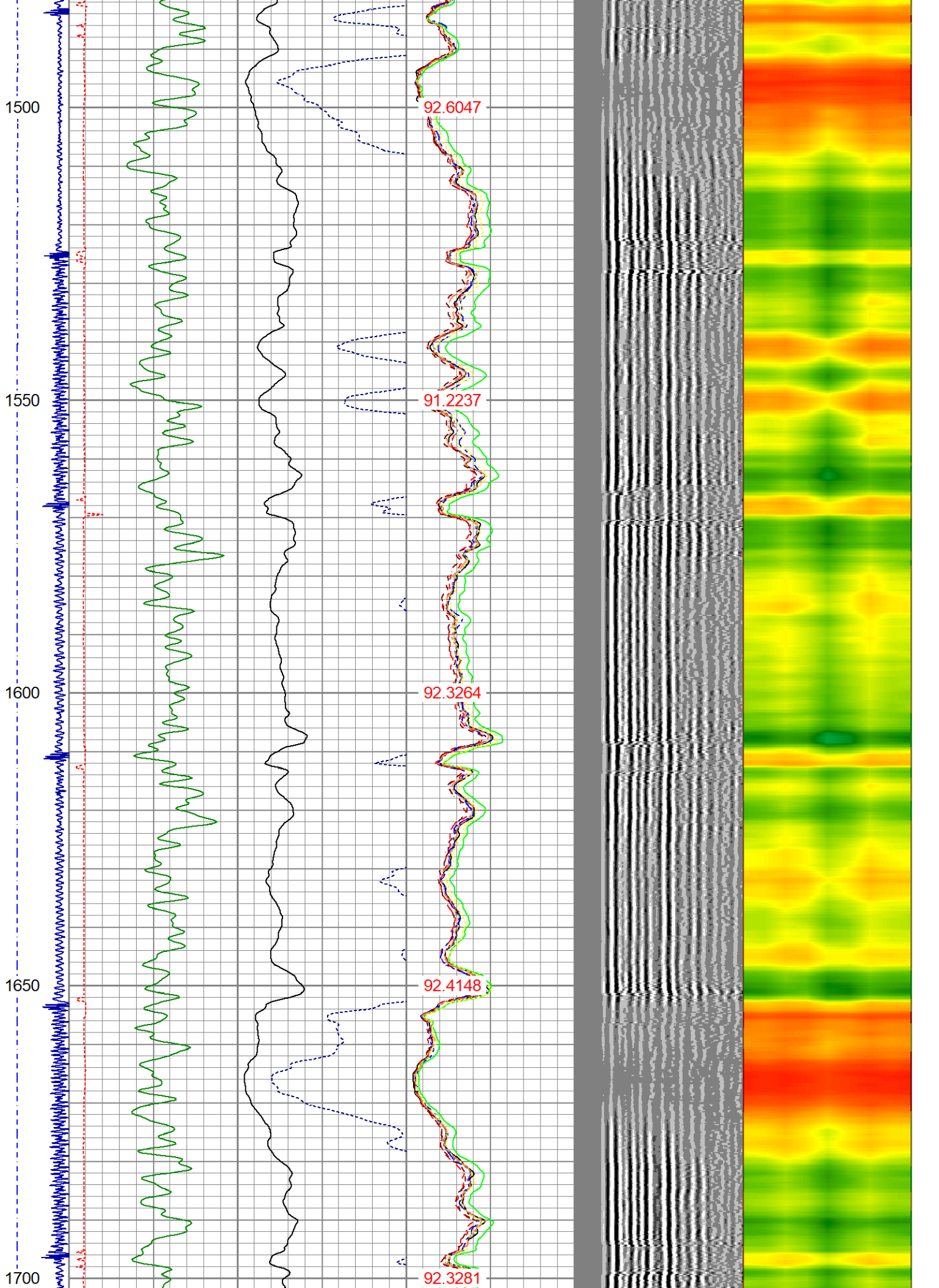


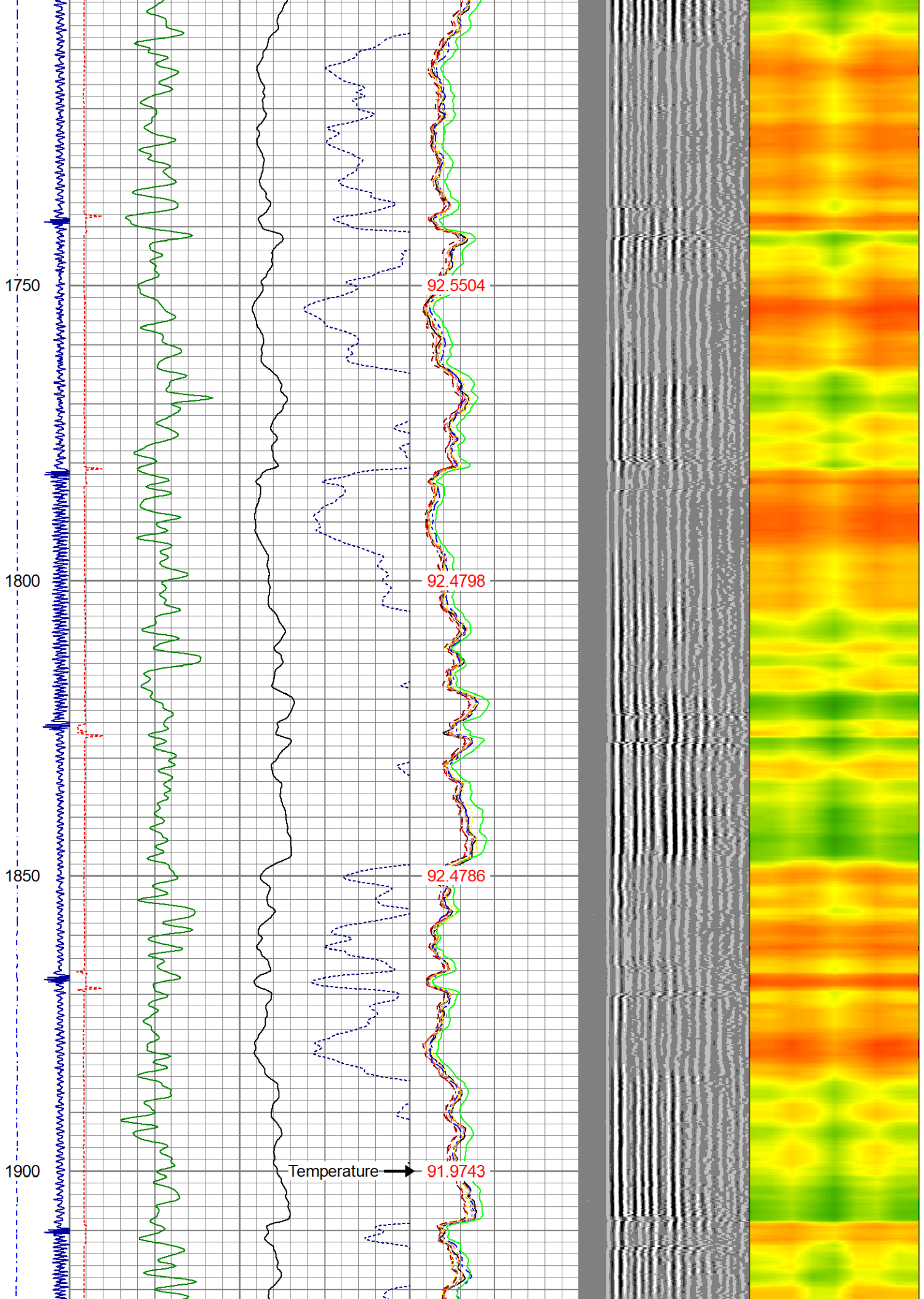


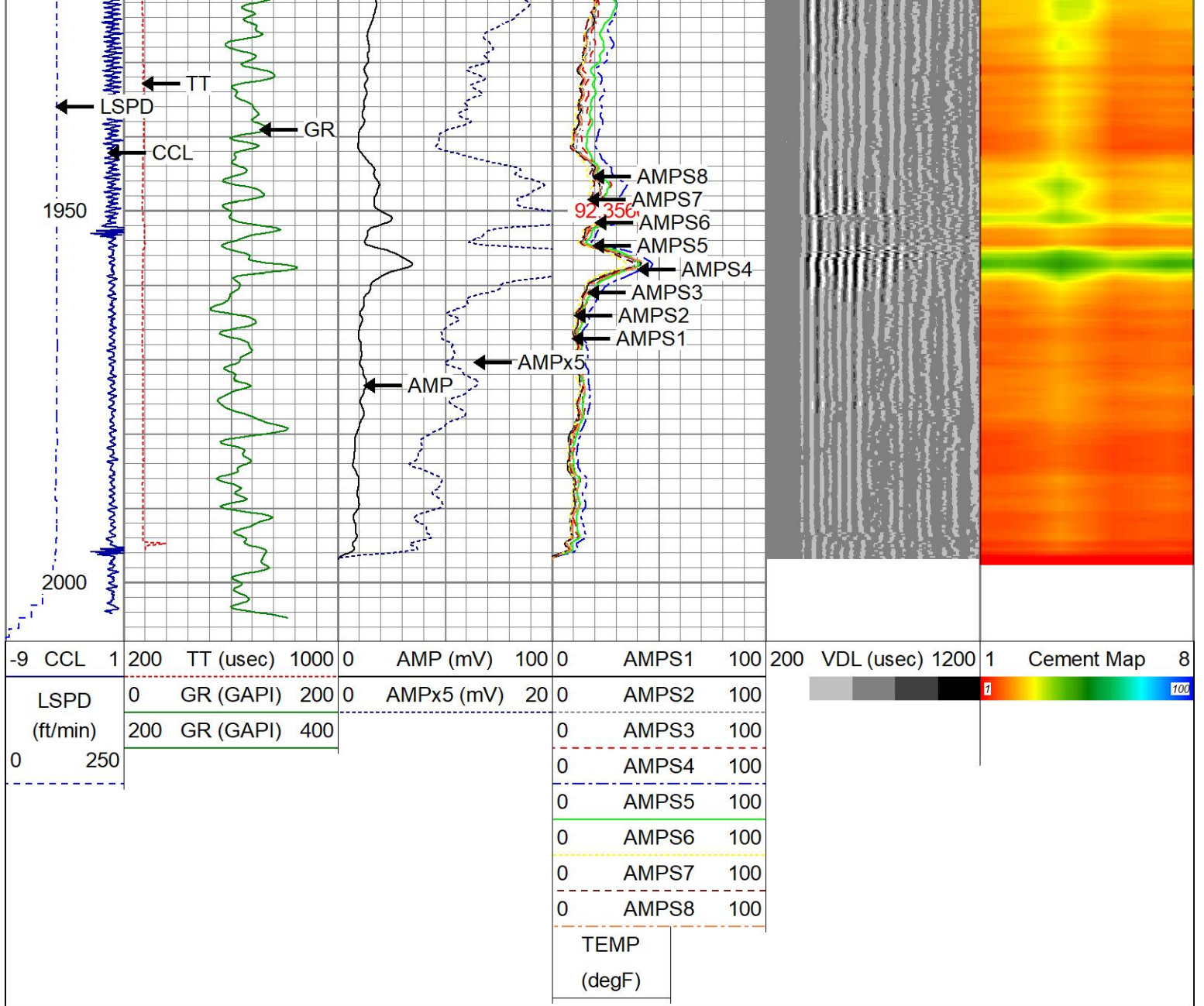












Calibration Report

Database File burman c05-23d.db
 Dataset Pathname pass5
 Dataset Creation Thu Jun 23 09:28:28 2022

Gamma Ray Calibration Report

Serial Number: 27GRL10-XXXX
 Tool Model: 27GRL10
 Performed: (Not Performed)

Calibrator Value: 1.0 GAPI

Background Reading: 0.0 cps
 Calibrator Reading: 1.0 cps

Sensitivity: 1.0000 GAPI/cps

Segmented Cement Bond Log Calibration Report

Serial Number: Greeley Ext Temp
 Tool Model: 27SBT10

Calibration Casing Diameter: 4.500 in

Master Calibration, performed Thu Jun 23 09:22:51 2022:

| | Raw (v) | | Calibrated (mv) | | Results | |
|-----|---------|-------|-----------------|--------|---------|--------|
| | Zero | Cal | Zero | Cal | Gain | Offset |
| 3' | 0.008 | 0.849 | 0.250 | 81.196 | 96.280 | -0.550 |
| CAL | 0.003 | 0.946 | | | | |
| 5' | 0.021 | 0.622 | 0.250 | 81.196 | 134.710 | -2.539 |
| SUM | | | | | | |
| S1 | 0.019 | 0.799 | 0.000 | 81.196 | 104.074 | -1.950 |
| S2 | 0.005 | 0.791 | 0.000 | 81.196 | 103.346 | -0.539 |
| S3 | 0.006 | 0.817 | 0.000 | 81.196 | 100.152 | -0.593 |
| S4 | 0.006 | 0.893 | 0.000 | 81.196 | 91.562 | -0.542 |
| S5 | 0.008 | 0.959 | 0.000 | 81.196 | 85.414 | -0.699 |
| S6 | 0.007 | 0.935 | 0.000 | 81.196 | 87.446 | -0.597 |
| S7 | 0.006 | 0.904 | 0.000 | 81.196 | 90.429 | -0.518 |
| S8 | 0.006 | 0.825 | 0.000 | 81.196 | 99.193 | -0.592 |

Internal Reference Calibration, performed Thu Jun 23 09:23:51 2022:

| | Raw (v) | | Calibrated (v) | | Results | |
|-----|---------|-------|----------------|-------|---------|--------|
| | Zero | Cal | Zero | Cal | Gain | Offset |
| CAL | 0.005 | 0.945 | 0.003 | 0.946 | 1.002 | -0.001 |

Air Zero Calibration, performed Thu Jun 23 09:14:15 2022:

| | Raw (v) | | Calibrated (v) | | Results | |
|-----|---------|--|----------------|--|---------|-------|
| | Zero | | Zero | | Offset | |
| 3' | 0.000 | | 0.000 | | | 0.000 |
| 5' | 0.000 | | 0.000 | | | 0.000 |
| SUM | | | | | | |
| S1 | 0.000 | | 0.000 | | | 0.000 |
| S2 | 0.000 | | 0.000 | | | 0.000 |
| S3 | 0.000 | | 0.000 | | | 0.000 |
| S4 | 0.000 | | 0.000 | | | 0.000 |
| S5 | 0.000 | | 0.000 | | | 0.000 |
| S6 | 0.000 | | 0.000 | | | 0.000 |
| S7 | 0.000 | | 0.000 | | | 0.000 |
| S8 | 0.000 | | 0.000 | | | 0.000 |



Company CHEVRON
 Well BURMAN C 05-23D
 Field WATTENBERG
 County WELD
 State CO

Country USA