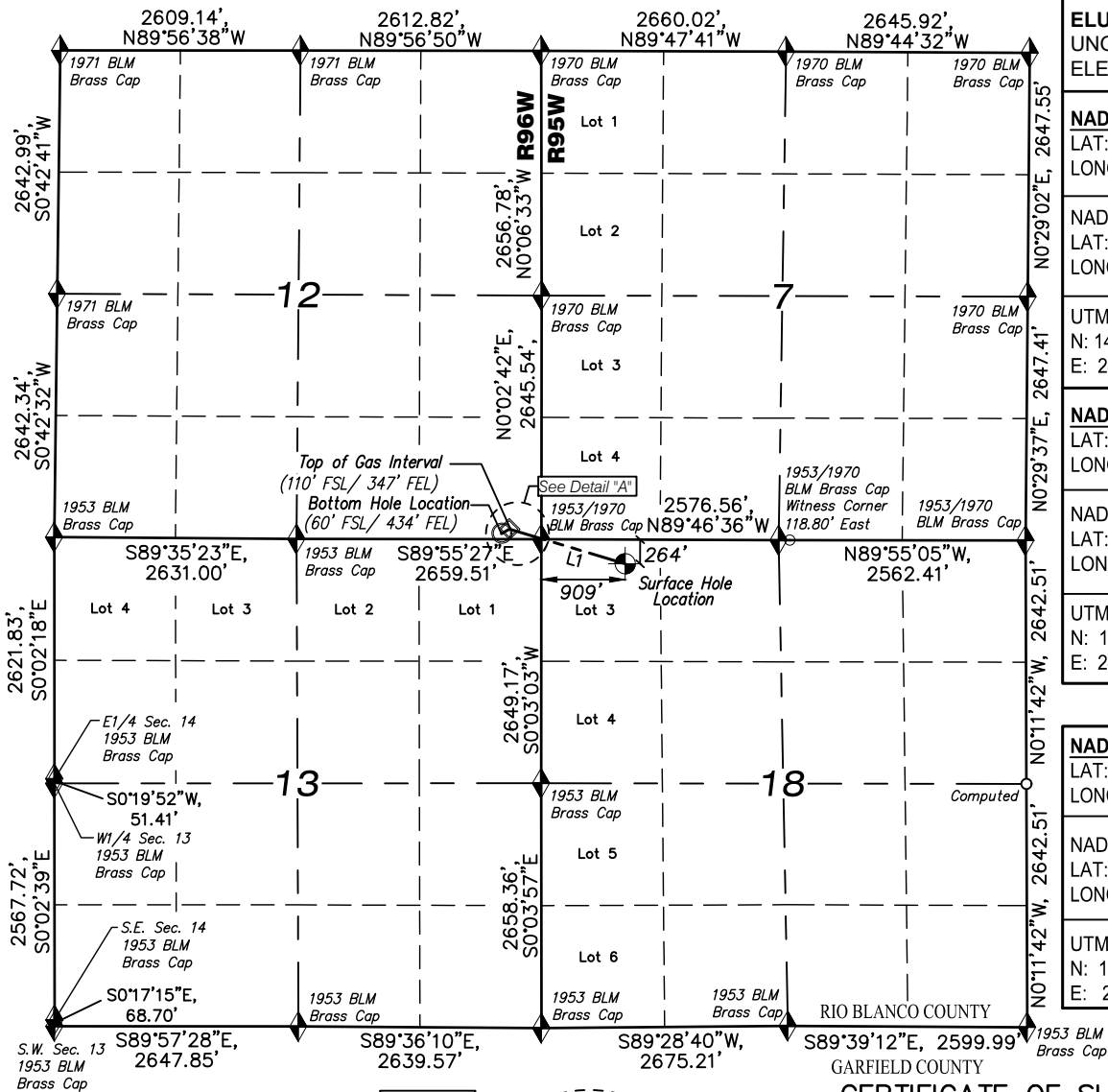


T4S, R96W, 6TH P.M.

T4S, R95W, 6TH P.M.



**ELU A18 FED 25D-12 496 WELL**  
UNGRADED GROUND  
ELEVATION = 8032.9'

**NAD 83 (SURFACE LOCATION)**  
LAT: 39° 42' 32.20" N (39.708944 N)  
LONG: 108° 06' 15.99" W (108.104441 W)

**NAD27 (SURFACE LOCATION)**  
LAT: 39° 42' 32.29" N (39.708969 N)  
LONG: 108° 06' 13.70" W (108.103807 W)

**UTM NAD 27 (ZONE 12) US Feet**  
N: 14433232.62  
E: 2455016.78

**NAD 83 (BOTTOM HOLE LOCATION)**  
LAT: 39° 42' 35.43" N (39.709842 N)  
LONG: 108° 06' 33.16" W (108.109212 W)

**NAD27 (BOTTOM HOLE LOCATION)**  
LAT: 39° 42' 35.52" N (39.709867 N)  
LONG: 108° 06' 30.88" W (108.108578 W)

**UTM NAD 27 (ZONE 12) US Feet**  
N: 14433516.10  
E: 2453664.20

**NAD 83 (TOP OF GAS INTERVAL)**  
LAT: 39° 42' 35.92" N (39.709979 N)  
LONG: 108° 06' 32.06" W (108.108905 W)

**NAD27 (TOP OF GAS INTERVAL)**  
LAT: 39° 42' 36.01" N (39.710004 N)  
LONG: 108° 06' 29.77" W (108.108270 W)

**UTM NAD 27 (ZONE 12) US Feet**  
N: 14433568.87  
E: 2453749.15

## NOTES:

- Survey Datum:  
Low Distortion Projection Parameters  
Datum NAD83(2011) Epoch 2010.000 (GRS80)  
Projection Type = Transverse Mercator  
Origin Latitude = 39°40'00" North  
Origin Longitude = 108°04'00" West  
Scale Reduction = 1.000 377 882 Unitless  
Units = U.S. Survey Foot (USSF)  
GEOID12a NAVD88 (Basis of Elevation)
- Well footages are measured at right angles to section lines.
- PDOP Reading: 1.4 Operator: B. Taggart (Rule No. 215)
- Improvements: See Location Drawing (Figure #6) for all visible improvements within 2000 ft. of the working pad surface.

**CAERUS OIL & GAS LLC**

ELU A18 FED 25D-12 496 WELL  
LOT 3 (NW1/4 NW1/4),  
SECTION 18, T4S, R95W, 6TH P.M.  
RIO BLANCO COUNTY, COLORADO

**WELL LOCATION PLAT**

SURVEYED BY: JT/BT	DATE: 5/06/22	
DRAWN BY: SGT	DATE: 10/05/23	PROJECT NO: 20-13-04



**WASATCH SURVEYING ASSOCIATES**  
906 MAIN STREET, EVANSTON, WY 82930  
(307) 789-4545

