

Project: Rio Blanco County, CO  
 Site: ELU A18 495 Pad  
 Well: ELU A18 FED 22A-13 496  
 Wellbore: Wellbore #1  
 Design: Design #4  
 Latitude: 39.708885  
 Longitude: -108.103506  
 Ground Level: 8029.0  
 RKB @ 8059.0usft (30')

PROJECT DETAILS: Rio Blanco County, CO

Geodetic System: Universal Transverse Mercator (US Survey Feet)  
 Datum: NAD 1927 - Western US  
 Ellipsoid: Clarke 1866  
 Zone: Zone 12N (114 W to 108 W)  
 System Datum: Mean Sea Level

REFERENCE INFORMATION

Vertical (TVD) Reference: RKB @ 8059.0usft (30')  
 Section (VS) Reference: Slot - 22A-13(0.0N, 0.0E)  
 Measured Depth Reference: RKB @ 8059.0usft (30')  
 Calculation Method: Minimum Curvature

SECTION DETAILS

MD	Inc	Azi	TVD	+N/-S	+E/-W	Dleg	TFace	VSect	Annotation
0.0	0.00	0.00	0.0	0.0	0.0	0.00	0.00	0.0	
200.0	0.00	0.00	200.0	0.0	0.0	0.00	0.00	0.0	Build 3° / 100'
559.3	10.78	224.28	557.2	-24.1	-23.5	3.00	224.28	33.2	EOB @ 10.78° Inc. / 224.28° Azm / Turn 3° / 100'
621.6	10.78	234.28	618.4	-31.7	-32.3	3.00	94.91	44.7	EOT @ 10.78° Inc. / 234.28° Azm
8423.7	10.78	234.28	8282.8	-883.6	-1217.1	0.00	0.00	1504.0	Drop 3° / 100'
8783.0	0.00	0.00	8640.0	-903.3	-1244.5	3.00	180.00	1537.7	EOD @ Vertical / Build 1.5° / 100'
8866.8	1.26	240.00	8723.7	-903.8	-1245.3	1.50	240.00	1538.6	EOB @ 1.26° Inc. / 240.00° Azm
13386.1	1.26	240.00	13242.0	-953.3	-1331.1	0.00	0.00	1637.2	TD @ 13386.1' MD / 13242.0' TVD

FORMATION TOP DETAILS

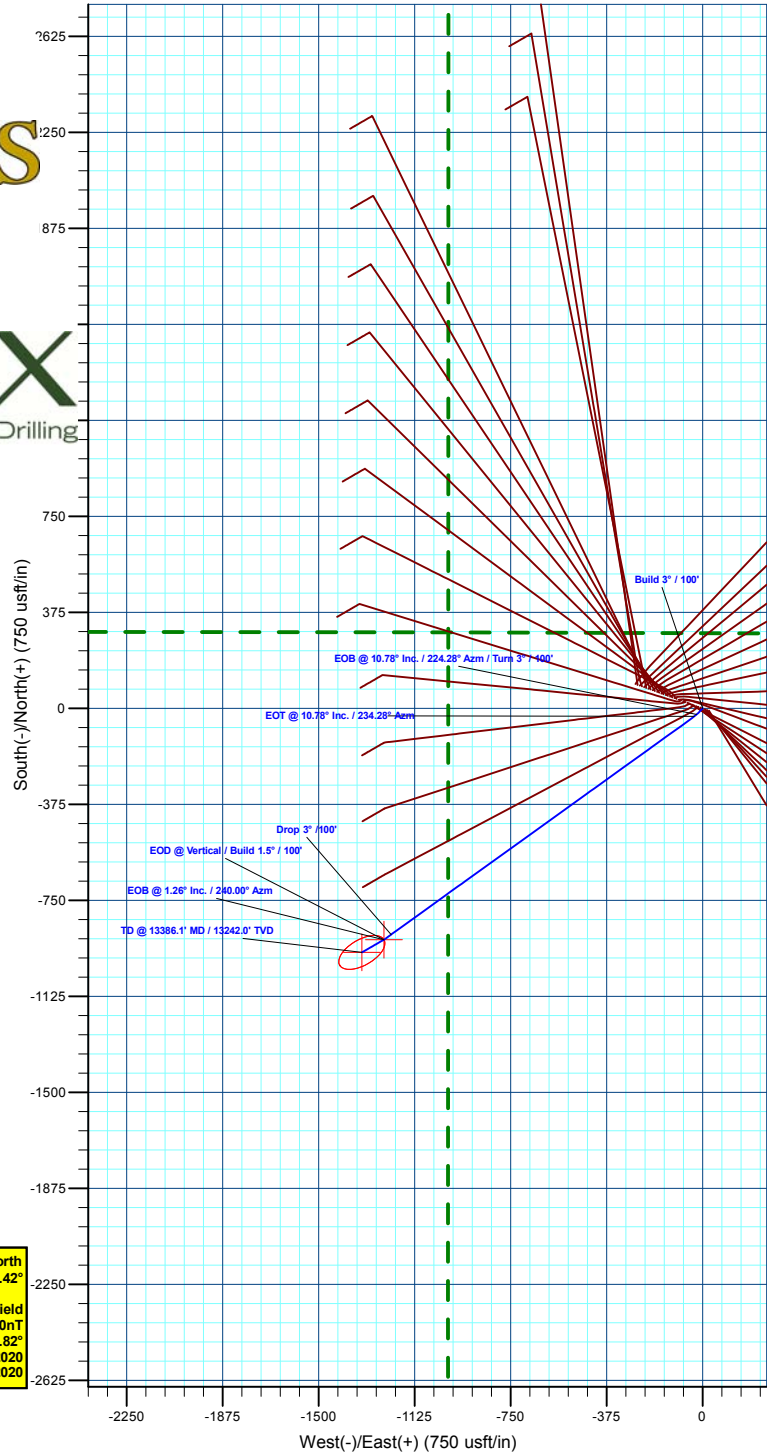
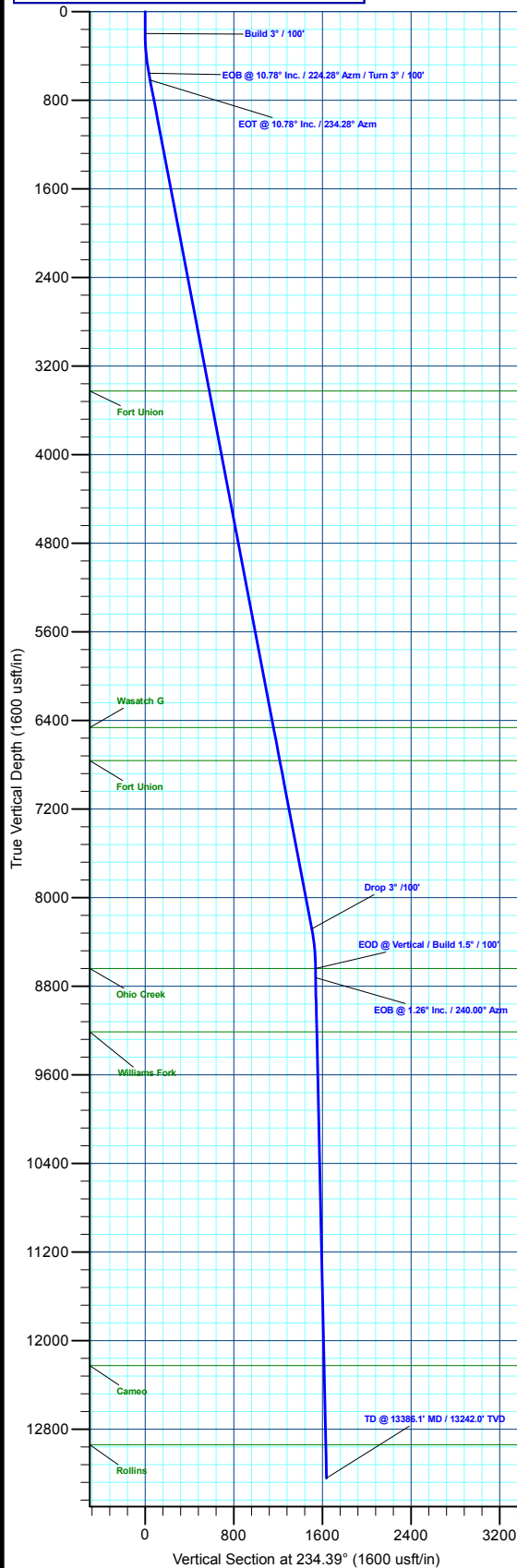
TVDPath	MDPath	Formation
3427.0	3480.7	Wasatch
6464.0	6572.2	Wasatch G
6764.0	6877.6	Fort Union
8640.0	8783.0	Ohio Creek
9213.0	9356.1	Williams Fork
12226.0	12369.9	Cameo
12942.0	13086.0	Rollins

DESIGN TARGET DETAILS

Name	TVD	+N/-S	+E/-W	Northing	Easting	Latitude	Longitude
22A-13 - OHCR	8640.0	-903.3	-1244.5	14432261.67	2453887.74	39.706406	-108.107927
22A-13 - PBHL	13242.0	-953.3	-1331.1	14432208.90	2453802.80	39.706269	-108.108235

WELL DETAILS: ELU A18 FED 22A-13 496

+N/-S	+E/-W	Ground Level : 8029.0	Northing	Easting	Latitude	Longitude
0.0	0.0		14433204.70	2455102.40	39.708885	-108.103506
						22A-13



**T M**  
 Azimuths to True North  
 Magnetic North: 9.42°  
 Magnetic Field  
 Strength: 51157.0nT  
 Dip Angle: 65.82°  
 Date: 8/17/2020  
 Model: HDGM2020

Plan: Design #4 (ELU A18 FED 22A-13 496/Wellbore #1)

Created By: Will Jircik Date: 3:31, October 05 2023



## **Caerus Oil & Gas**

**Rio Blanco County, CO**

**ELU A18 495 Pad**

**ELU A18 FED 22A-13 496 - Slot 22A-13**

**Wellbore #1**

**Plan: Design #4**

## **KLX Well Planning Report**

**05 October, 2023**



<b>Database:</b>	EDM 5000.1 Single User Db	<b>Local Co-ordinate Reference:</b>	Well ELU A18 FED 22A-13 496 - Slot 22A-13
<b>Company:</b>	Caerus Oil & Gas	<b>TVD Reference:</b>	RKB @ 8059.0usft (30')
<b>Project:</b>	Rio Blanco County, CO	<b>MD Reference:</b>	RKB @ 8059.0usft (30')
<b>Site:</b>	ELU A18 495 Pad	<b>North Reference:</b>	True
<b>Well:</b>	ELU A18 FED 22A-13 496	<b>Survey Calculation Method:</b>	Minimum Curvature
<b>Wellbore:</b>	Wellbore #1		
<b>Design:</b>	Design #4		

<b>Project</b>	Rio Blanco County, CO		
<b>Map System:</b>	Universal Transverse Mercator (US Survey Fee	<b>System Datum:</b>	Mean Sea Level
<b>Geo Datum:</b>	NAD 1927 - Western US		
<b>Map Zone:</b>	Zone 12N (114 W to 108 W)		

<b>Site</b>	ELU A18 495 Pad				
<b>Site Position:</b>		<b>Northing:</b>	14,433,279.80 usft	<b>Latitude:</b>	39.709109
<b>From:</b>	Map	<b>Easting:</b>	2,454,904.40 usft	<b>Longitude:</b>	-108.104201
<b>Position Uncertainty:</b>	0.0 usft	<b>Slot Radius:</b>	13-3/16 "	<b>Grid Convergence:</b>	1.85 °

<b>Well</b>	ELU A18 FED 22A-13 496 - Slot 22A-13					
<b>Well Position</b>	<b>+N/-S</b>	-81.5 usft	<b>Northing:</b>	14,433,204.70 usft	<b>Latitude:</b>	39.708885
	<b>+E/-W</b>	195.5 usft	<b>Easting:</b>	2,455,102.40 usft	<b>Longitude:</b>	-108.103506
<b>Position Uncertainty</b>		0.0 usft	<b>Wellhead Elevation:</b>		<b>Ground Level:</b>	8,029.0 usft

<b>Wellbore</b>	Wellbore #1				
<b>Magnetics</b>	<b>Model Name</b>	<b>Sample Date</b>	<b>Declination (°)</b>	<b>Dip Angle (°)</b>	<b>Field Strength (nT)</b>
	HDGM2020	8/17/2020	9.42	65.82	51,157.00000000

<b>Design</b>	Design #4			
<b>Audit Notes:</b>				
<b>Version:</b>	<b>Phase:</b>	PLAN	<b>Tie On Depth:</b>	0.0
<b>Vertical Section:</b>	<b>Depth From (TVD) (usft)</b>	<b>+N/-S (usft)</b>	<b>+E/-W (usft)</b>	<b>Direction (°)</b>
	0.0	0.0	0.0	234.39

<b>Plan Sections</b>										
Measured Depth (usft)	Inclination (°)	Azimuth (°)	Vertical Depth (usft)	+N/-S (usft)	+E/-W (usft)	Dogleg Rate (°/100usft)	Build Rate (°/100usft)	Turn Rate (°/100usft)	TFO (°)	Target
0.0	0.00	0.00	0.0	0.0	0.0	0.00	0.00	0.00	0.00	
200.0	0.00	0.00	200.0	0.0	0.0	0.00	0.00	0.00	0.00	
559.3	10.78	224.28	557.2	-24.1	-23.5	3.00	3.00	0.00	224.28	
621.6	10.78	234.28	618.4	-31.7	-32.3	3.00	0.00	16.06	94.91	
8,423.7	10.78	234.28	8,282.8	-883.6	-1,217.1	0.00	0.00	0.00	0.00	
8,783.0	0.00	0.00	8,640.0	-903.3	-1,244.5	3.00	-3.00	0.00	180.00	22A-13 - OHCR
8,866.8	1.26	240.00	8,723.7	-903.8	-1,245.3	1.50	1.50	-143.28	240.00	
13,386.1	1.26	240.00	13,242.0	-953.3	-1,331.1	0.00	0.00	0.00	0.00	22A-13 - PBHL

<b>Database:</b>	EDM 5000.1 Single User Db	<b>Local Co-ordinate Reference:</b>	Well ELU A18 FED 22A-13 496 - Slot 22A-13
<b>Company:</b>	Caerus Oil & Gas	<b>TVD Reference:</b>	RKB @ 8059.0usft (30')
<b>Project:</b>	Rio Blanco County, CO	<b>MD Reference:</b>	RKB @ 8059.0usft (30')
<b>Site:</b>	ELU A18 495 Pad	<b>North Reference:</b>	True
<b>Well:</b>	ELU A18 FED 22A-13 496	<b>Survey Calculation Method:</b>	Minimum Curvature
<b>Wellbore:</b>	Wellbore #1		
<b>Design:</b>	Design #4		

**Planned Survey**

Measured Depth (usft)	Inclination (°)	Azimuth (°)	Vertical Depth (usft)	+N/-S (usft)	+E/-W (usft)	Vertical Section (usft)	Dogleg Rate (°/100usft)	Build Rate (°/100usft)	Turn Rate (°/100usft)
0.0	0.00	0.00	0.0	0.0	0.0	0.0	0.00	0.00	0.00
100.0	0.00	0.00	100.0	0.0	0.0	0.0	0.00	0.00	0.00
<b>Build 3° / 100'</b>									
200.0	0.00	0.00	200.0	0.0	0.0	0.0	0.00	0.00	0.00
300.0	3.00	224.28	300.0	-1.9	-1.8	2.6	3.00	3.00	0.00
400.0	6.00	224.28	399.6	-7.5	-7.3	10.3	3.00	3.00	0.00
500.0	9.00	224.28	498.8	-16.8	-16.4	23.1	3.00	3.00	0.00
<b>EOB @ 10.78° Inc. / 224.28° Azm / Turn 3° / 100'</b>									
559.3	10.78	224.28	557.2	-24.1	-23.5	33.2	3.00	3.00	0.00
600.0	10.74	230.81	597.2	-29.2	-29.1	40.7	3.00	-0.09	16.07
<b>EOT @ 10.78° Inc. / 234.28° Azm</b>									
621.6	10.78	234.28	618.4	-31.7	-32.3	44.7	3.00	0.17	16.04
700.0	10.78	234.28	695.4	-40.3	-44.2	59.4	0.00	0.00	0.00
800.0	10.78	234.28	793.6	-51.2	-59.4	78.1	0.00	0.00	0.00
900.0	10.78	234.28	891.9	-62.1	-74.6	96.8	0.00	0.00	0.00
1,000.0	10.78	234.28	990.1	-73.0	-89.8	115.5	0.00	0.00	0.00
1,100.0	10.78	234.28	1,088.3	-83.9	-105.0	134.2	0.00	0.00	0.00
1,200.0	10.78	234.28	1,186.6	-94.9	-120.2	152.9	0.00	0.00	0.00
1,300.0	10.78	234.28	1,284.8	-105.8	-135.3	171.6	0.00	0.00	0.00
1,400.0	10.78	234.28	1,383.1	-116.7	-150.5	190.3	0.00	0.00	0.00
1,500.0	10.78	234.28	1,481.3	-127.6	-165.7	209.0	0.00	0.00	0.00
1,600.0	10.78	234.28	1,579.5	-138.5	-180.9	227.7	0.00	0.00	0.00
1,700.0	10.78	234.28	1,677.8	-149.5	-196.1	246.4	0.00	0.00	0.00
1,800.0	10.78	234.28	1,776.0	-160.4	-211.3	265.1	0.00	0.00	0.00
1,900.0	10.78	234.28	1,874.2	-171.3	-226.5	283.8	0.00	0.00	0.00
2,000.0	10.78	234.28	1,972.5	-182.2	-241.6	302.6	0.00	0.00	0.00
2,100.0	10.78	234.28	2,070.7	-193.1	-256.8	321.3	0.00	0.00	0.00
2,200.0	10.78	234.28	2,168.9	-204.0	-272.0	340.0	0.00	0.00	0.00
2,300.0	10.78	234.28	2,267.2	-215.0	-287.2	358.7	0.00	0.00	0.00
2,400.0	10.78	234.28	2,365.4	-225.9	-302.4	377.4	0.00	0.00	0.00
2,500.0	10.78	234.28	2,463.6	-236.8	-317.6	396.1	0.00	0.00	0.00
2,600.0	10.78	234.28	2,561.9	-247.7	-332.8	414.8	0.00	0.00	0.00
2,700.0	10.78	234.28	2,660.1	-258.6	-347.9	433.5	0.00	0.00	0.00
2,800.0	10.78	234.28	2,758.3	-269.6	-363.1	452.2	0.00	0.00	0.00
2,900.0	10.78	234.28	2,856.6	-280.5	-378.3	470.9	0.00	0.00	0.00
3,000.0	10.78	234.28	2,954.8	-291.4	-393.5	489.6	0.00	0.00	0.00
3,100.0	10.78	234.28	3,053.1	-302.3	-408.7	508.3	0.00	0.00	0.00
3,200.0	10.78	234.28	3,151.3	-313.2	-423.9	527.0	0.00	0.00	0.00
3,300.0	10.78	234.28	3,249.5	-324.2	-439.1	545.7	0.00	0.00	0.00
3,400.0	10.78	234.28	3,347.8	-335.1	-454.2	564.4	0.00	0.00	0.00
<b>Wasatch</b>									
3,480.7	10.78	234.28	3,427.0	-343.9	-466.5	579.5	0.00	0.00	0.00
3,500.0	10.78	234.28	3,446.0	-346.0	-469.4	583.1	0.00	0.00	0.00
3,600.0	10.78	234.28	3,544.2	-356.9	-484.6	601.8	0.00	0.00	0.00
3,700.0	10.78	234.28	3,642.5	-367.8	-499.8	620.5	0.00	0.00	0.00
3,800.0	10.78	234.28	3,740.7	-378.8	-515.0	639.2	0.00	0.00	0.00
3,900.0	10.78	234.28	3,838.9	-389.7	-530.2	657.9	0.00	0.00	0.00
4,000.0	10.78	234.28	3,937.2	-400.6	-545.4	676.6	0.00	0.00	0.00
4,100.0	10.78	234.28	4,035.4	-411.5	-560.5	695.3	0.00	0.00	0.00
4,200.0	10.78	234.28	4,133.6	-422.4	-575.7	714.0	0.00	0.00	0.00
4,300.0	10.78	234.28	4,231.9	-433.3	-590.9	732.7	0.00	0.00	0.00
4,400.0	10.78	234.28	4,330.1	-444.3	-606.1	751.4	0.00	0.00	0.00
4,500.0	10.78	234.28	4,428.3	-455.2	-621.3	770.1	0.00	0.00	0.00
4,600.0	10.78	234.28	4,526.6	-466.1	-636.5	788.8	0.00	0.00	0.00

<b>Database:</b>	EDM 5000.1 Single User Db	<b>Local Co-ordinate Reference:</b>	Well ELU A18 FED 22A-13 496 - Slot 22A-13
<b>Company:</b>	Caerus Oil & Gas	<b>TVD Reference:</b>	RKB @ 8059.0usft (30')
<b>Project:</b>	Rio Blanco County, CO	<b>MD Reference:</b>	RKB @ 8059.0usft (30')
<b>Site:</b>	ELU A18 495 Pad	<b>North Reference:</b>	True
<b>Well:</b>	ELU A18 FED 22A-13 496	<b>Survey Calculation Method:</b>	Minimum Curvature
<b>Wellbore:</b>	Wellbore #1		
<b>Design:</b>	Design #4		

Planned Survey									
Measured Depth (usft)	Inclination (°)	Azimuth (°)	Vertical Depth (usft)	+N/-S (usft)	+E/-W (usft)	Vertical Section (usft)	Dogleg Rate (°/100usft)	Build Rate (°/100usft)	Turn Rate (°/100usft)
4,700.0	10.78	234.28	4,624.8	-477.0	-651.7	807.6	0.00	0.00	0.00
4,800.0	10.78	234.28	4,723.1	-487.9	-666.8	826.3	0.00	0.00	0.00
4,900.0	10.78	234.28	4,821.3	-498.9	-682.0	845.0	0.00	0.00	0.00
5,000.0	10.78	234.28	4,919.5	-509.8	-697.2	863.7	0.00	0.00	0.00
5,100.0	10.78	234.28	5,017.8	-520.7	-712.4	882.4	0.00	0.00	0.00
5,200.0	10.78	234.28	5,116.0	-531.6	-727.6	901.1	0.00	0.00	0.00
5,300.0	10.78	234.28	5,214.2	-542.5	-742.8	919.8	0.00	0.00	0.00
5,400.0	10.78	234.28	5,312.5	-553.5	-758.0	938.5	0.00	0.00	0.00
5,500.0	10.78	234.28	5,410.7	-564.4	-773.1	957.2	0.00	0.00	0.00
5,600.0	10.78	234.28	5,508.9	-575.3	-788.3	975.9	0.00	0.00	0.00
5,700.0	10.78	234.28	5,607.2	-586.2	-803.5	994.6	0.00	0.00	0.00
5,800.0	10.78	234.28	5,705.4	-597.1	-818.7	1,013.3	0.00	0.00	0.00
5,900.0	10.78	234.28	5,803.6	-608.1	-833.9	1,032.0	0.00	0.00	0.00
6,000.0	10.78	234.28	5,901.9	-619.0	-849.1	1,050.7	0.00	0.00	0.00
6,100.0	10.78	234.28	6,000.1	-629.9	-864.3	1,069.4	0.00	0.00	0.00
6,200.0	10.78	234.28	6,098.3	-640.8	-879.4	1,088.1	0.00	0.00	0.00
6,300.0	10.78	234.28	6,196.6	-651.7	-894.6	1,106.8	0.00	0.00	0.00
6,400.0	10.78	234.28	6,294.8	-662.6	-909.8	1,125.5	0.00	0.00	0.00
6,500.0	10.78	234.28	6,393.1	-673.6	-925.0	1,144.2	0.00	0.00	0.00
<b>Wasatch G</b>									
6,572.2	10.78	234.28	6,464.0	-681.5	-936.0	1,157.7	0.00	0.00	0.00
6,600.0	10.78	234.28	6,491.3	-684.5	-940.2	1,162.9	0.00	0.00	0.00
6,700.0	10.78	234.28	6,589.5	-695.4	-955.4	1,181.6	0.00	0.00	0.00
6,800.0	10.78	234.28	6,687.8	-706.3	-970.6	1,200.3	0.00	0.00	0.00
<b>Fort Union</b>									
6,877.6	10.78	234.28	6,764.0	-714.8	-982.3	1,214.8	0.00	0.00	0.00
6,900.0	10.78	234.28	6,786.0	-717.2	-985.7	1,219.0	0.00	0.00	0.00
7,000.0	10.78	234.28	6,884.2	-728.2	-1,000.9	1,237.7	0.00	0.00	0.00
7,100.0	10.78	234.28	6,982.5	-739.1	-1,016.1	1,256.4	0.00	0.00	0.00
7,200.0	10.78	234.28	7,080.7	-750.0	-1,031.3	1,275.1	0.00	0.00	0.00
7,300.0	10.78	234.28	7,178.9	-760.9	-1,046.5	1,293.9	0.00	0.00	0.00
7,400.0	10.78	234.28	7,277.2	-771.8	-1,061.7	1,312.6	0.00	0.00	0.00
7,500.0	10.78	234.28	7,375.4	-782.8	-1,076.9	1,331.3	0.00	0.00	0.00
7,600.0	10.78	234.28	7,473.6	-793.7	-1,092.0	1,350.0	0.00	0.00	0.00
7,700.0	10.78	234.28	7,571.9	-804.6	-1,107.2	1,368.7	0.00	0.00	0.00
7,800.0	10.78	234.28	7,670.1	-815.5	-1,122.4	1,387.4	0.00	0.00	0.00
7,900.0	10.78	234.28	7,768.3	-826.4	-1,137.6	1,406.1	0.00	0.00	0.00
8,000.0	10.78	234.28	7,866.6	-837.4	-1,152.8	1,424.8	0.00	0.00	0.00
8,100.0	10.78	234.28	7,964.8	-848.3	-1,168.0	1,443.5	0.00	0.00	0.00
8,200.0	10.78	234.28	8,063.1	-859.2	-1,183.2	1,462.2	0.00	0.00	0.00
8,300.0	10.78	234.28	8,161.3	-870.1	-1,198.3	1,480.9	0.00	0.00	0.00
8,400.0	10.78	234.28	8,259.5	-881.0	-1,213.5	1,499.6	0.00	0.00	0.00
<b>Drop 3° /100'</b>									
8,423.7	10.78	234.28	8,282.8	-883.6	-1,217.1	1,504.0	0.00	0.00	0.00
8,500.0	8.49	234.28	8,358.0	-891.1	-1,227.5	1,516.8	3.00	-3.00	0.00
8,600.0	5.49	234.28	8,457.3	-898.2	-1,237.4	1,529.0	3.00	-3.00	0.00
8,700.0	2.49	234.28	8,557.0	-902.2	-1,243.0	1,535.9	3.00	-3.00	0.00
<b>EOD @ Vertical / Build 1.5° / 100' - Ohio Creek</b>									
8,783.0	0.00	0.00	8,640.0	-903.3	-1,244.5	1,537.7	3.00	-3.00	0.00
8,800.0	0.25	240.00	8,657.0	-903.3	-1,244.5	1,537.8	1.50	1.50	0.00
<b>EOB @ 1.26° Inc. / 240.00° Azm</b>									
8,866.8	1.26	240.00	8,723.7	-903.8	-1,245.3	1,538.6	1.50	1.50	0.00
8,900.0	1.26	240.00	8,757.0	-904.1	-1,245.9	1,539.4	0.00	0.00	0.00

<b>Database:</b>	EDM 5000.1 Single User Db	<b>Local Co-ordinate Reference:</b>	Well ELU A18 FED 22A-13 496 - Slot 22A-13
<b>Company:</b>	Caerus Oil & Gas	<b>TVD Reference:</b>	RKB @ 8059.0usft (30')
<b>Project:</b>	Rio Blanco County, CO	<b>MD Reference:</b>	RKB @ 8059.0usft (30')
<b>Site:</b>	ELU A18 495 Pad	<b>North Reference:</b>	True
<b>Well:</b>	ELU A18 FED 22A-13 496	<b>Survey Calculation Method:</b>	Minimum Curvature
<b>Wellbore:</b>	Wellbore #1		
<b>Design:</b>	Design #4		

Planned Survey										
Measured Depth (usft)	Inclination (°)	Azimuth (°)	Vertical Depth (usft)	+N/-S (usft)	+E/-W (usft)	Vertical Section (usft)	Dogleg Rate (°/100usft)	Build Rate (°/100usft)	Turn Rate (°/100usft)	
9,000.0	1.26	240.00	8,856.9	-905.2	-1,247.8	1,541.5	0.00	0.00	0.00	
9,100.0	1.26	240.00	8,956.9	-906.3	-1,249.7	1,543.7	0.00	0.00	0.00	
9,200.0	1.26	240.00	9,056.9	-907.4	-1,251.6	1,545.9	0.00	0.00	0.00	
9,300.0	1.26	240.00	9,156.9	-908.5	-1,253.5	1,548.1	0.00	0.00	0.00	
<b>Williams Fork</b>										
9,356.1	1.26	240.00	9,213.0	-909.1	-1,254.6	1,549.3	0.00	0.00	0.00	
9,400.0	1.26	240.00	9,256.9	-909.6	-1,255.4	1,550.3	0.00	0.00	0.00	
9,500.0	1.26	240.00	9,356.8	-910.7	-1,257.3	1,552.5	0.00	0.00	0.00	
9,600.0	1.26	240.00	9,456.8	-911.8	-1,259.2	1,554.6	0.00	0.00	0.00	
9,700.0	1.26	240.00	9,556.8	-912.9	-1,261.1	1,556.8	0.00	0.00	0.00	
9,800.0	1.26	240.00	9,656.8	-914.0	-1,263.0	1,559.0	0.00	0.00	0.00	
9,900.0	1.26	240.00	9,756.7	-915.1	-1,264.9	1,561.2	0.00	0.00	0.00	
10,000.0	1.26	240.00	9,856.7	-916.2	-1,266.8	1,563.4	0.00	0.00	0.00	
10,100.0	1.26	240.00	9,956.7	-917.3	-1,268.7	1,565.5	0.00	0.00	0.00	
10,200.0	1.26	240.00	10,056.7	-918.4	-1,270.6	1,567.7	0.00	0.00	0.00	
10,300.0	1.26	240.00	10,156.6	-919.5	-1,272.5	1,569.9	0.00	0.00	0.00	
10,400.0	1.26	240.00	10,256.6	-920.6	-1,274.4	1,572.1	0.00	0.00	0.00	
10,500.0	1.26	240.00	10,356.6	-921.7	-1,276.3	1,574.3	0.00	0.00	0.00	
10,600.0	1.26	240.00	10,456.6	-922.7	-1,278.2	1,576.5	0.00	0.00	0.00	
10,700.0	1.26	240.00	10,556.5	-923.8	-1,280.1	1,578.6	0.00	0.00	0.00	
10,800.0	1.26	240.00	10,656.5	-924.9	-1,282.0	1,580.8	0.00	0.00	0.00	
10,900.0	1.26	240.00	10,756.5	-926.0	-1,283.9	1,583.0	0.00	0.00	0.00	
11,000.0	1.26	240.00	10,856.5	-927.1	-1,285.8	1,585.2	0.00	0.00	0.00	
11,100.0	1.26	240.00	10,956.4	-928.2	-1,287.7	1,587.4	0.00	0.00	0.00	
11,200.0	1.26	240.00	11,056.4	-929.3	-1,289.6	1,589.5	0.00	0.00	0.00	
11,300.0	1.26	240.00	11,156.4	-930.4	-1,291.5	1,591.7	0.00	0.00	0.00	
11,400.0	1.26	240.00	11,256.4	-931.5	-1,293.4	1,593.9	0.00	0.00	0.00	
11,500.0	1.26	240.00	11,356.3	-932.6	-1,295.3	1,596.1	0.00	0.00	0.00	
11,600.0	1.26	240.00	11,456.3	-933.7	-1,297.2	1,598.3	0.00	0.00	0.00	
11,700.0	1.26	240.00	11,556.3	-934.8	-1,299.1	1,600.5	0.00	0.00	0.00	
11,800.0	1.26	240.00	11,656.3	-935.9	-1,301.0	1,602.6	0.00	0.00	0.00	
11,900.0	1.26	240.00	11,756.3	-937.0	-1,302.9	1,604.8	0.00	0.00	0.00	
12,000.0	1.26	240.00	11,856.2	-938.1	-1,304.8	1,607.0	0.00	0.00	0.00	
12,100.0	1.26	240.00	11,956.2	-939.2	-1,306.7	1,609.2	0.00	0.00	0.00	
12,200.0	1.26	240.00	12,056.2	-940.3	-1,308.6	1,611.4	0.00	0.00	0.00	
12,300.0	1.26	240.00	12,156.2	-941.4	-1,310.5	1,613.5	0.00	0.00	0.00	
<b>Cameo</b>										
12,369.9	1.26	240.00	12,226.0	-942.1	-1,311.8	1,615.1	0.00	0.00	0.00	
12,400.0	1.26	240.00	12,256.1	-942.5	-1,312.4	1,615.7	0.00	0.00	0.00	
12,500.0	1.26	240.00	12,356.1	-943.6	-1,314.3	1,617.9	0.00	0.00	0.00	
12,600.0	1.26	240.00	12,456.1	-944.7	-1,316.2	1,620.1	0.00	0.00	0.00	
12,700.0	1.26	240.00	12,556.1	-945.8	-1,318.1	1,622.3	0.00	0.00	0.00	
12,800.0	1.26	240.00	12,656.0	-946.9	-1,320.0	1,624.5	0.00	0.00	0.00	
12,900.0	1.26	240.00	12,756.0	-948.0	-1,321.9	1,626.6	0.00	0.00	0.00	
13,000.0	1.26	240.00	12,856.0	-949.1	-1,323.8	1,628.8	0.00	0.00	0.00	
<b>Rollins</b>										
13,086.0	1.26	240.00	12,942.0	-950.0	-1,325.4	1,630.7	0.00	0.00	0.00	
13,100.0	1.26	240.00	12,956.0	-950.2	-1,325.7	1,631.0	0.00	0.00	0.00	
13,200.0	1.26	240.00	13,055.9	-951.2	-1,327.6	1,633.2	0.00	0.00	0.00	
13,300.0	1.26	240.00	13,155.9	-952.3	-1,329.5	1,635.4	0.00	0.00	0.00	
<b>TD @ 13386.1' MD / 13242.0' TVD</b>										
13,386.1	1.26	240.00	13,242.0	-953.3	-1,331.1	1,637.2	0.00	0.00	0.00	

<b>Database:</b>	EDM 5000.1 Single User Db	<b>Local Co-ordinate Reference:</b>	Well ELU A18 FED 22A-13 496 - Slot 22A-13
<b>Company:</b>	Caerus Oil & Gas	<b>TVD Reference:</b>	RKB @ 8059.0usft (30')
<b>Project:</b>	Rio Blanco County, CO	<b>MD Reference:</b>	RKB @ 8059.0usft (30')
<b>Site:</b>	ELU A18 495 Pad	<b>North Reference:</b>	True
<b>Well:</b>	ELU A18 FED 22A-13 496	<b>Survey Calculation Method:</b>	Minimum Curvature
<b>Wellbore:</b>	Wellbore #1		
<b>Design:</b>	Design #4		

**Design Targets**

**Target Name**

- hit/miss target - Shape	Dip Angle (°)	Dip Dir. (°)	TVD (usft)	+N/-S (usft)	+E/-W (usft)	Northing (usft)	Easting (usft)	Latitude	Longitude
22A-13 - OHCR - plan hits target center - Point	0.00	0.00	8,640.0	-903.3	-1,244.5	14,432,261.67	2,453,887.75	39.706406	-108.107928
22A-13 - PBHL - plan hits target center - Ellipse (radii L100.0 W50.0 on 240.00 azi)	0.00	0.00	13,242.0	-953.3	-1,331.1	14,432,208.90	2,453,802.80	39.706269	-108.108235

**Formations**

Measured Depth (usft)	Vertical Depth (usft)	Name	Lithology	Dip (°)	Dip Direction (°)
3,480.7	3,427.0	Wasatch			
6,572.2	6,464.0	Wasatch G			
6,877.6	6,764.0	Fort Union			
8,783.0	8,640.0	Ohio Creek			
9,356.1	9,213.0	Williams Fork			
12,369.9	12,226.0	Cameo			
13,086.0	12,942.0	Rollins			

**Plan Annotations**

Measured Depth (usft)	Vertical Depth (usft)	Local Coordinates		Comment
		+N/-S (usft)	+E/-W (usft)	
200.0	200.0	0.0	0.0	Build 3° / 100'
559.3	557.2	-24.1	-23.5	EOB @ 10.78° Inc. / 224.28° Azm / Turn 3° / 100'
621.6	618.4	-31.7	-32.3	EOT @ 10.78° Inc. / 234.28° Azm
8,423.7	8,282.8	-883.6	-1,217.1	Drop 3° / 100'
8,783.0	8,640.0	-903.3	-1,244.5	EOD @ Vertical / Build 1.5° / 100'
8,866.8	8,723.7	-903.8	-1,245.3	EOB @ 1.26° Inc. / 240.00° Azm
13,386.1	13,242.0	-953.3	-1,331.1	TD @ 13386.1' MD / 13242.0' TVD