



1:1200

LWD
Resistivity

MD Log

Country : United States of America
 Field : Wattenberg
 Location : 40.108415
 : -104.798534
 Well : Land Fed 29-10HZ
 Company : Occidental Petroleum
 Rig : Precision 461

Company : Occidental Petroleum
 Rig : Precision 461
 Well : Land Fed 29-10HZ
 Field : Wattenberg
 County/Parish : Weld
 State/Province : Colorado
 Country : United States of America
 Well ID : 05-123-52155

LOCATION
 Latitude : 40.108415
 Longitude : -104.798534
 Land Fed 10-29HZ
 Sect: 29 Twp: 2N Range: 66W

Other Services:

Permanent Datum : Ground Level
 Elevation: 4912
 Log Measured From :

Elev. KB : 4932
 DF : 4932
 GLWD : 4912

Depth Logged : 2020 to : 7671
 Date Logged : 07/10/2023 to : 07/11/2023
 Total Depth MD : 18683.97 TVD : 7420.5
 Spud Date : 07/08/2023

FINAL PRINT
 Job Number:
LAND FED 29-10HZ

Run	Borehole Record (MD)		Run	Borehole Record (MD)	
	Size	From		Size	From
1	7.875	2020	18683.97		
Run	Casing Record (MD)		Run	Casing Record (MD)	
	Size	Weight		Size	Weight
		5			

DISCLAIMER

Altitude does not guarantee the accuracy or correctness of interpretations in or from this log. Since all interpretations are opinions based on measurements Altitude shall under no circumstance be responsible for consequential damages or and other loss, cost or expense incurred or sustained in connection with the use of such interpretations.

LOGGING SUMMARY

Log Run	1			
Bit Run	1			
Hole Size (in)	8.50			
Sensor Suite				

Measured Depth

In Hole From	2020			
In Hole To	7671			
Log From	2020.00			
Log To	7671.00			

Date/Time

In Hole Date	2023-07-08			
In Hole Time	17:08:17			
Out Hole Date	2023-07-11			
Out Hole Time	19:45:23			
Begin Log Date	2023-07-08			
Begin Log Time	17:08:17			
End Log Date	2023-07-11			
End Log Time	19:45:23			

LWD Engineer	Brandon Snyder				
Oil Company Rep	James Gober				

DRILLING FLUID SUMMARY

Mud Type	OBM				
Density (lb/gal)	9.30				
Funnel Viscosity	53				
Plastic Viscosity	18				
Chlorides	184738				
Oil/Water Ratio	70.06/29.94				
Maximum Circ Temp (F)	221				

CORRECTIONS

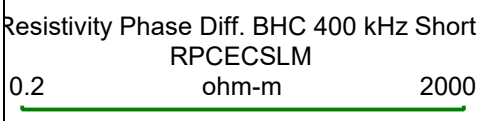
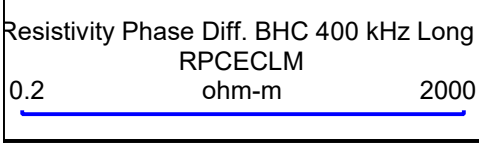
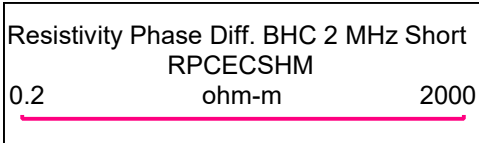
Log Run	1				
Bit Run	1				
Start Date/Time	2023-07-08 17:09:24				
Start Depth (ft)	0				
End Date/Time	2023-07-11 19:46:46				
End Depth (ft)	18683.97				

Gamma Ray Corrections

Collar Correction	3.365				
Mud Density (lb/gal)	12				
Mud Correction	1				
Calibration	1.35				
%K	0				

WPR Corrections

Effective Hole Diam (in)	8.5				
Surface Rm (ohm-m)	1000				
Surface Mud Temp (F)	70				
Bottom Hole Circ Temp (F)	221				
Rm @ BHT	336.847				



Resistivity Phase Diff. BHC 2 MHz Long
 RPCECHM
 0.2 ohm-m 2000

Resistivity Atten. BHC 400 kHz Long
 RACECLM
 0.2 ohm-m 2000

Resistivity Atten. BHC 2 MHz Short
 RACECSHM
 0.2 ohm-m 2000

Resistivity Atten. BHC 400 kHz Short
 RACECSLM
 0.2 ohm-m 2000

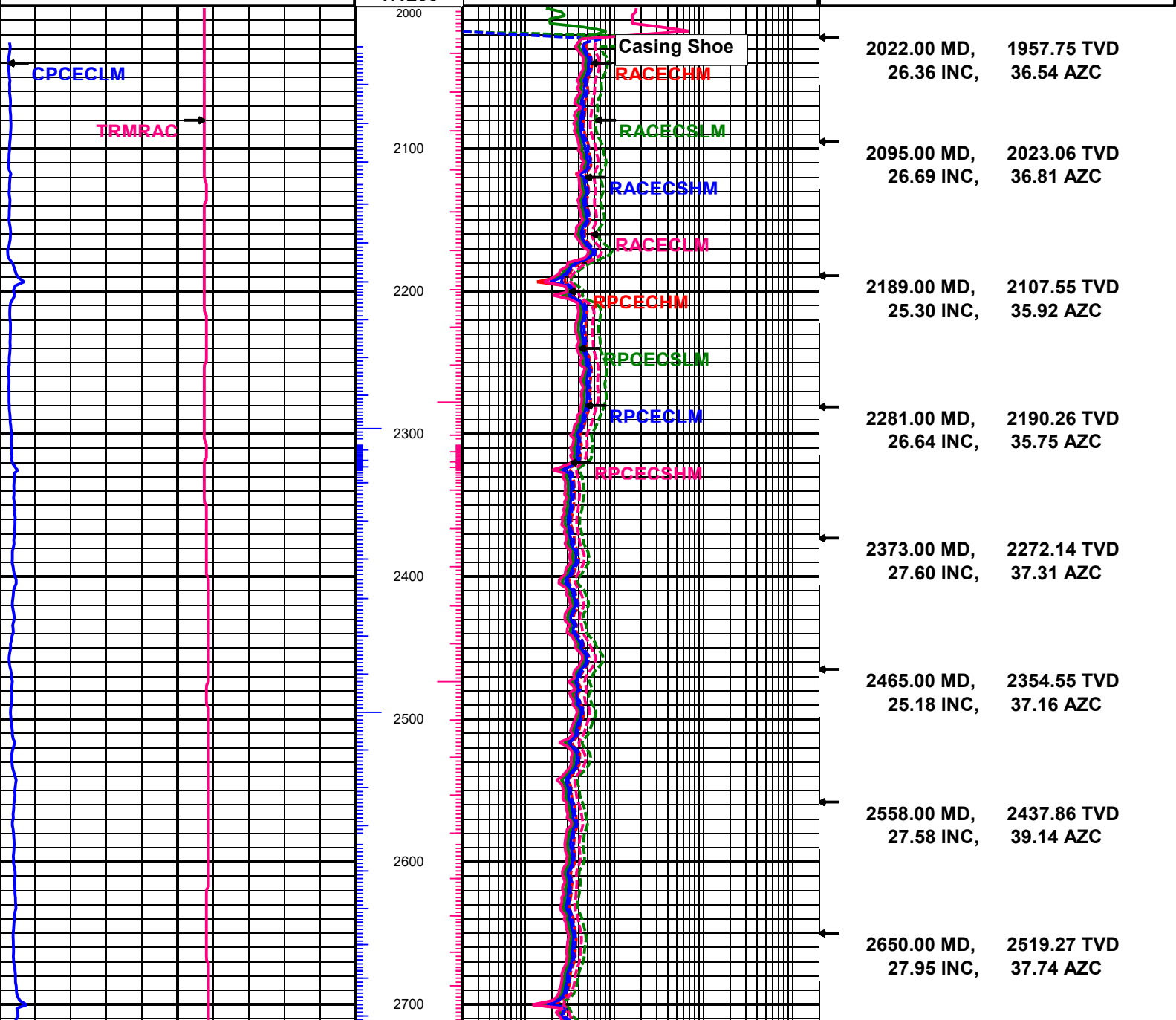
Resistivity Atten. BHC 2 MHz Long
 RACECHM
 0.2 ohm-m 2000

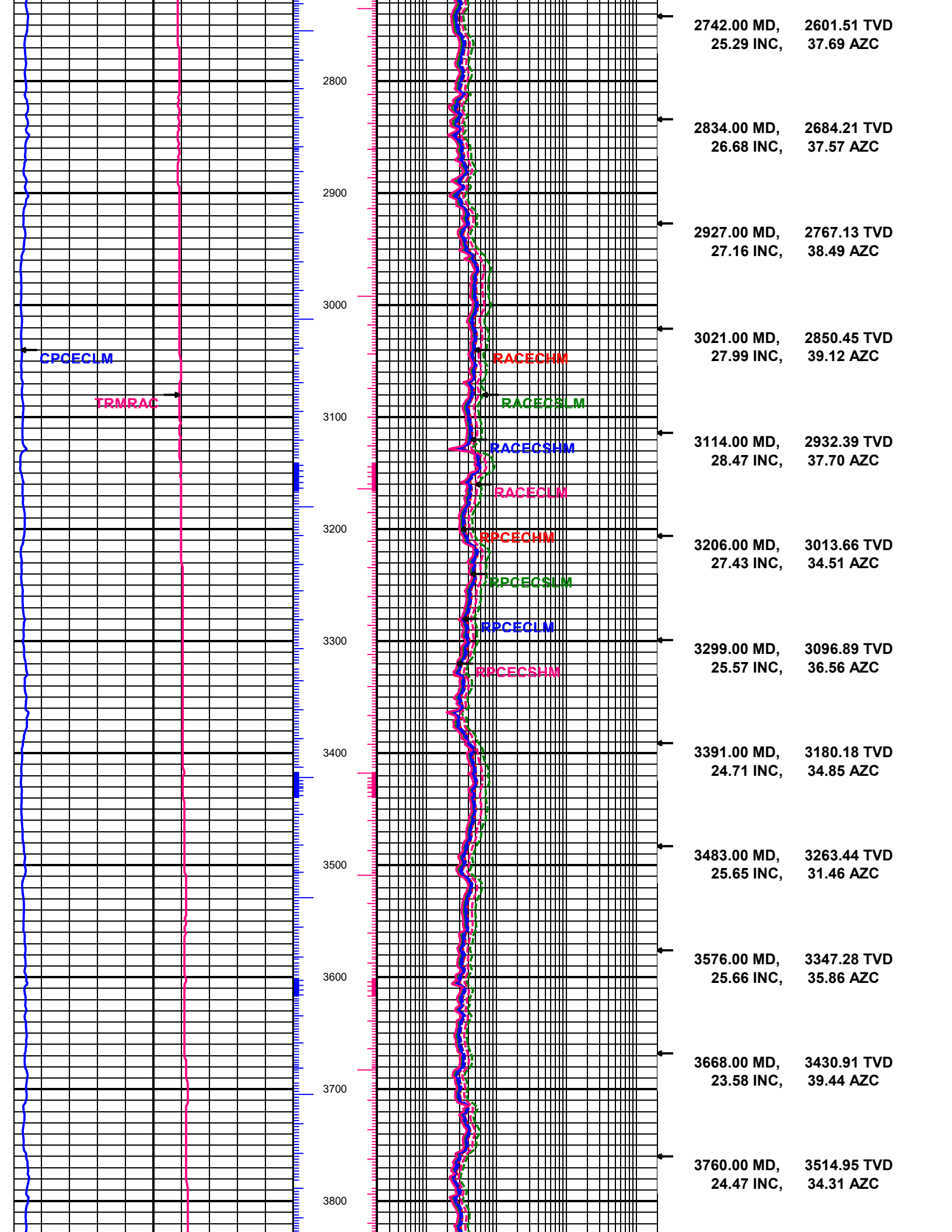
Resistivity Compensation Temperature
 TRMRAC
 0 F (1.00 ft Smoothing) 300

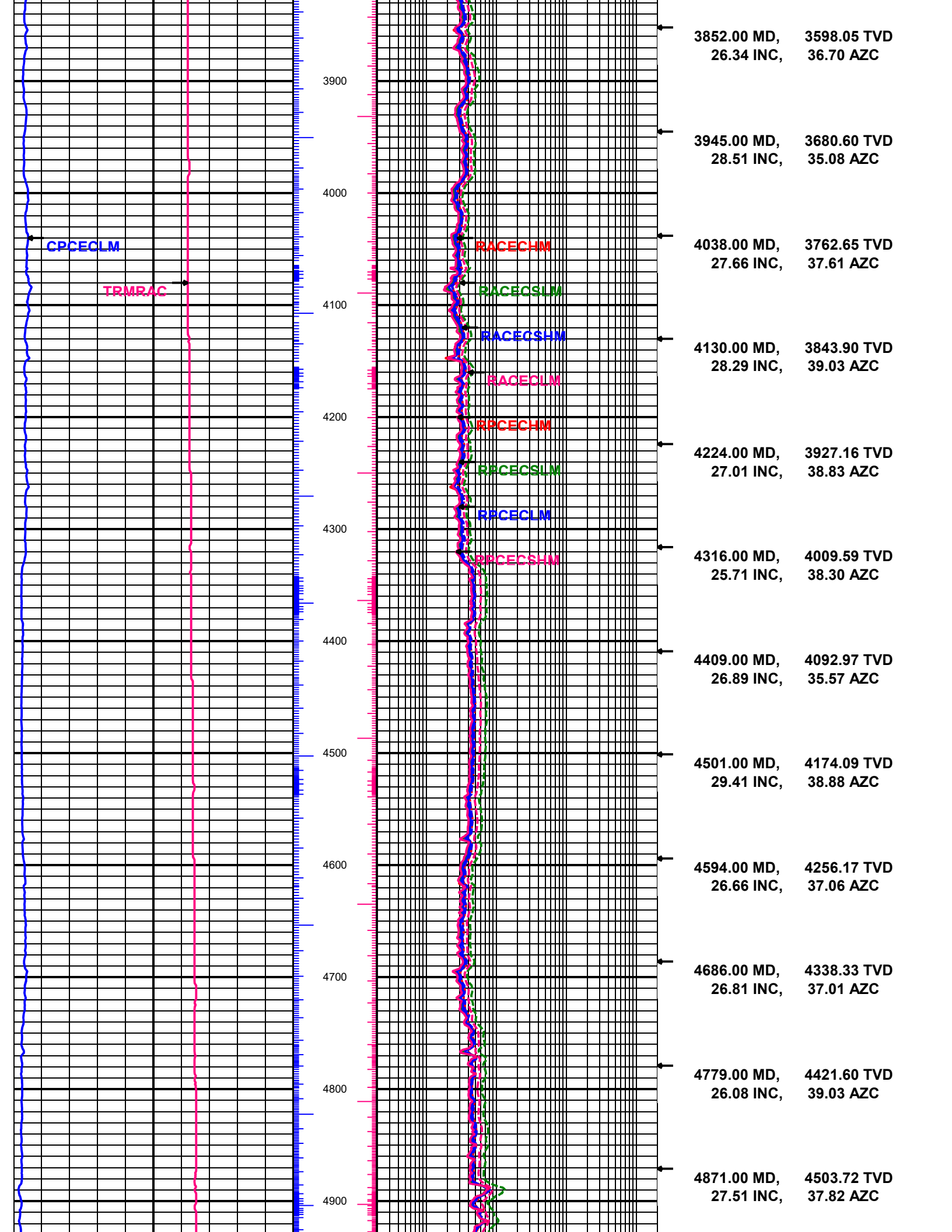
Conductivity Phase Diff. BHC 400 kHz Long
 CPCECLM
 0 mmho (0.20 ft Smoothing) 7500

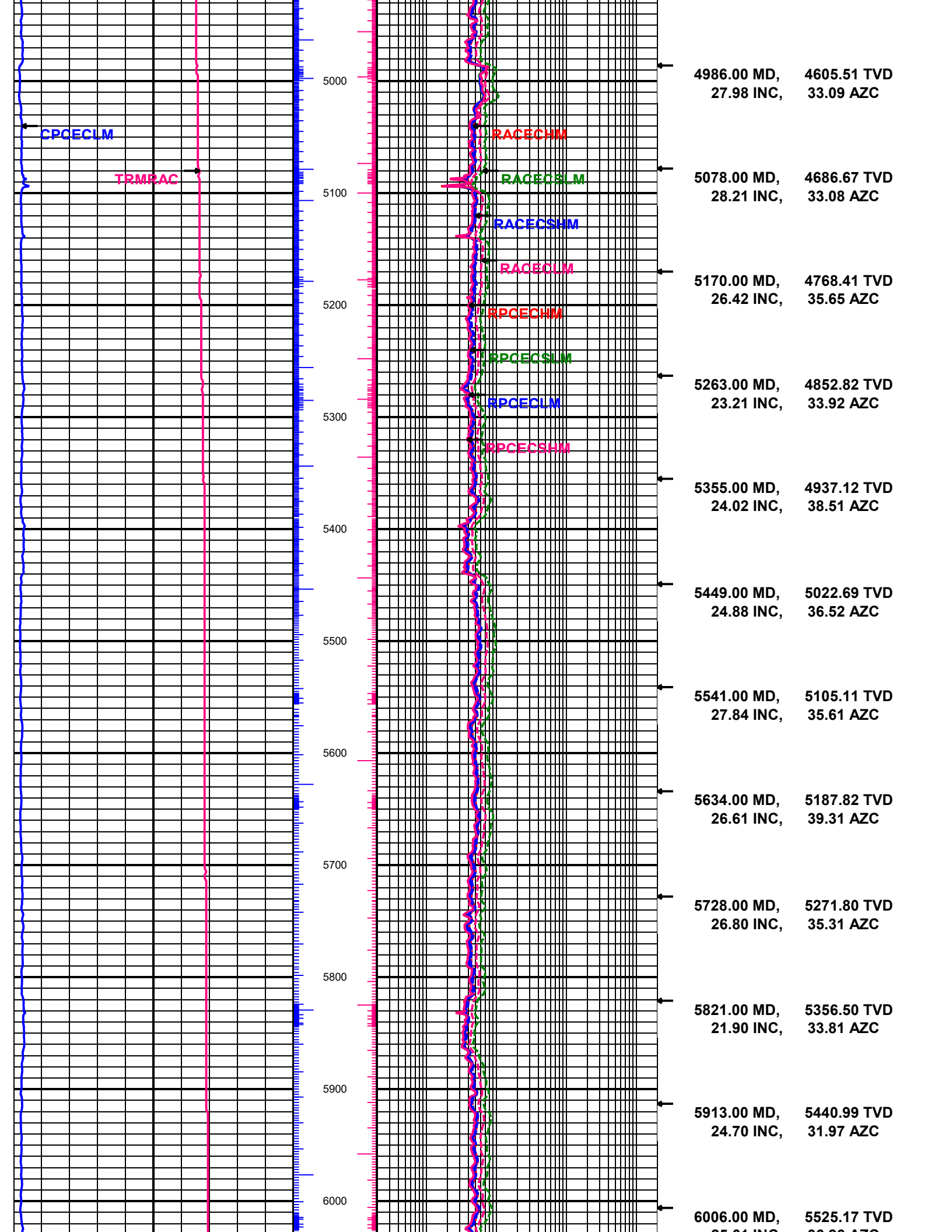
MD
 FEET
 1:1200

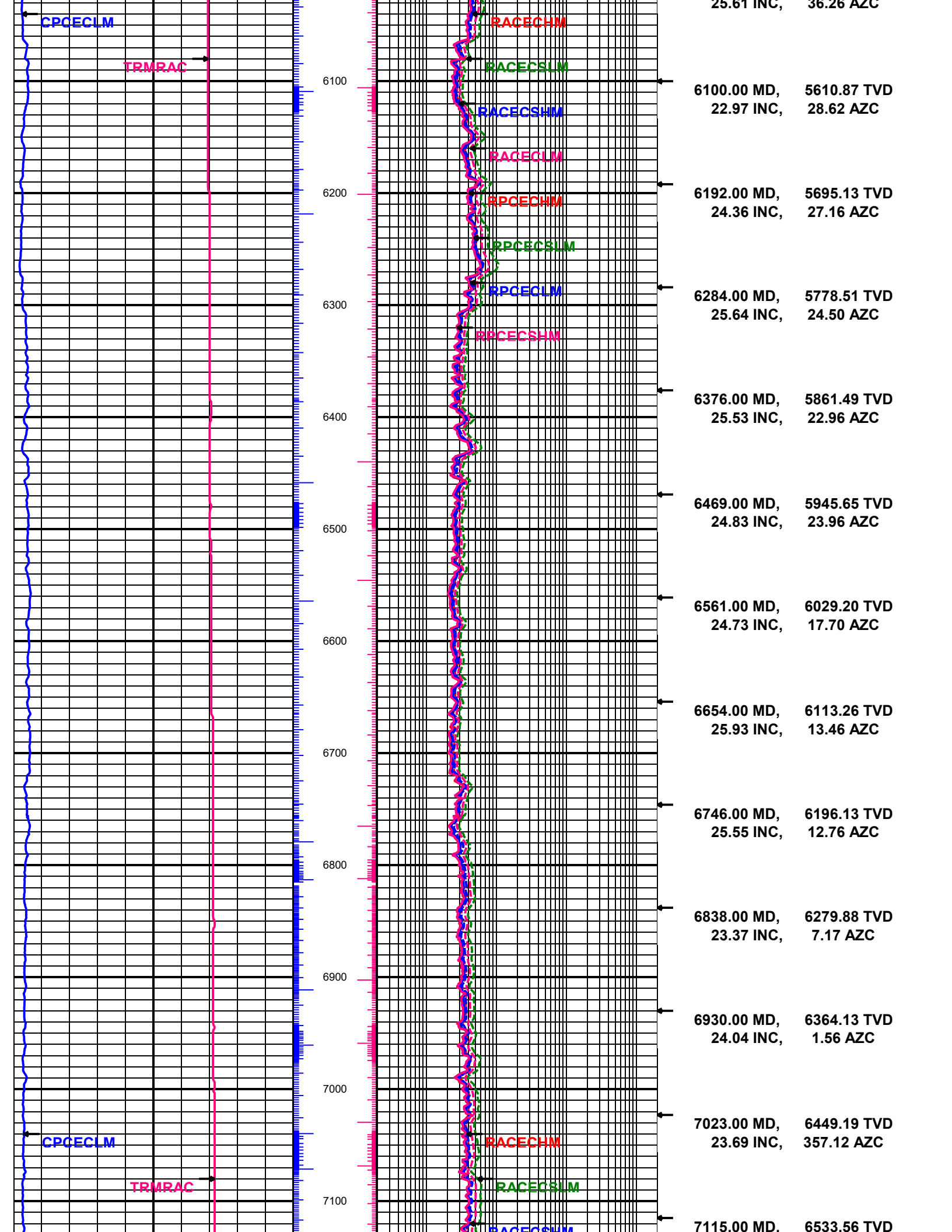
Directional Surveys

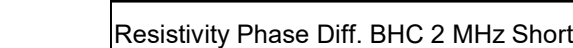
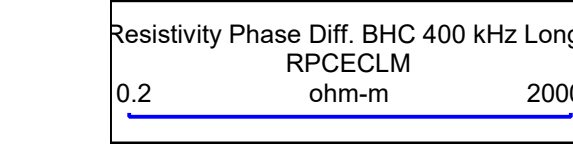
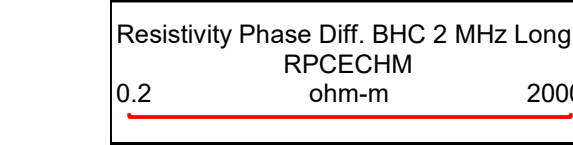
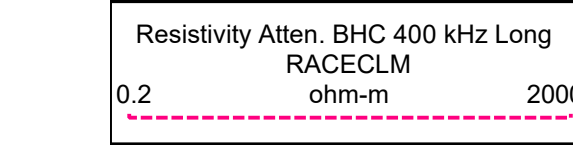
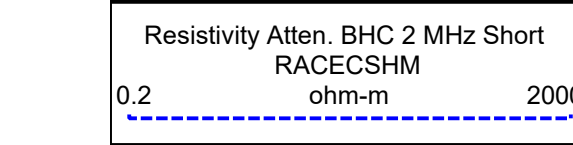
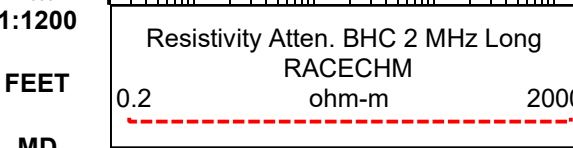
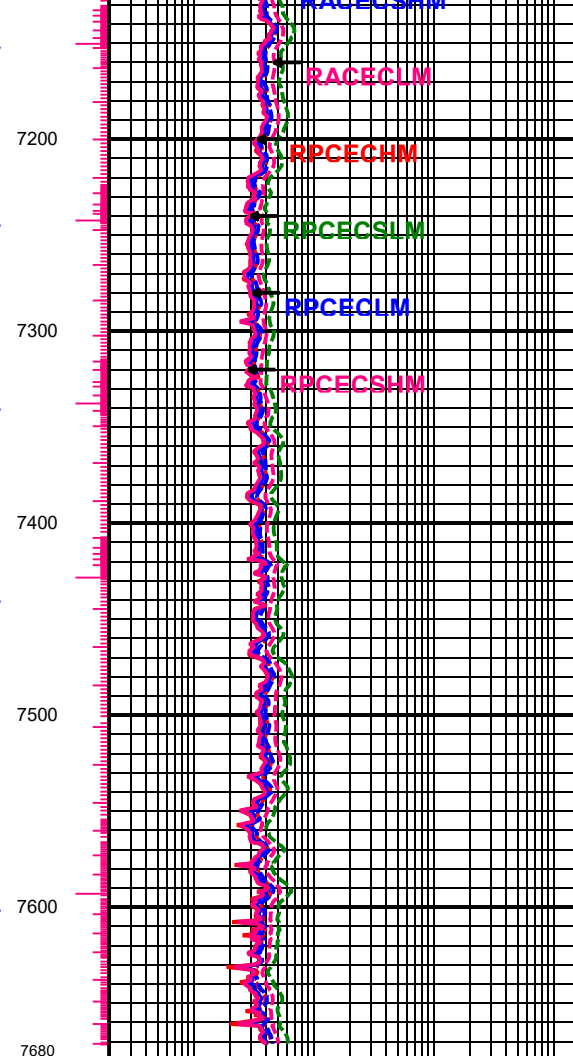
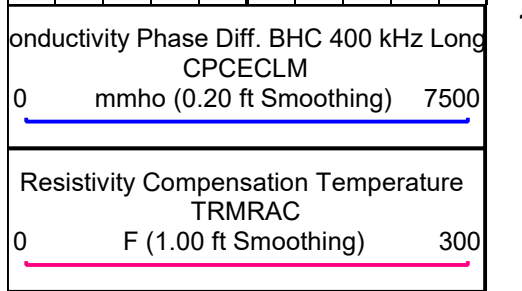
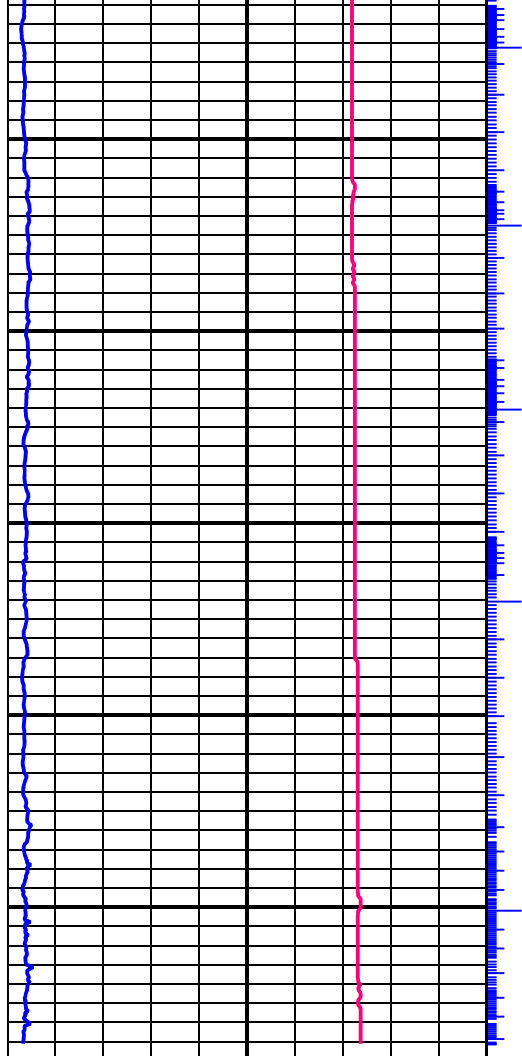












23.31 INC,	353.14 AZC
7208.00 MD,	6618.86 TVD
23.70 INC,	0.26 AZC
7301.00 MD,	6704.00 TVD
23.77 INC,	355.65 AZC
7395.00 MD,	6789.63 TVD
24.99 INC,	0.65 AZC
7487.00 MD,	6872.76 TVD
25.75 INC,	357.58 AZC
7579.00 MD,	6956.08 TVD
24.43 INC,	356.42 AZC
7672.00 MD,	7039.47 TVD

Directional Surveys

0.2

RPCECSHM

ohm-m

2000

EQUIPMENT

Log Run	1				
Bit Run	1				
Start Date/Time	2023-07-08 17:08:17				
Start Depth (ft)	2020				
End Date/Time	2023-07-11 19:45:23				
End Depth (ft)	7671				

Serial Numbers					
Surface Gear					
Flow Sub					
Pulser					
Battery 1					
Battery 2					
Turbine Alternator					
Directional Sensor					
Gamma Sensor					
WPR Sensor					
Vibration Sensor					

Sensor Offsets To Bit					
Directional (ft)					
Gamma Ray (ft)					
WPR (ft)	11012.39				
PWD (ft)					
Vibration (ft)					