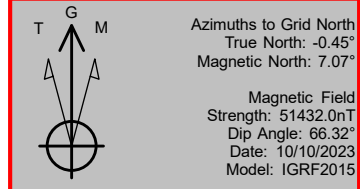




Plan: Plan #1 (Prairie 07C/OWB)  
 Created By: Mike Mataalii Date: 13:24, October 11, 2023

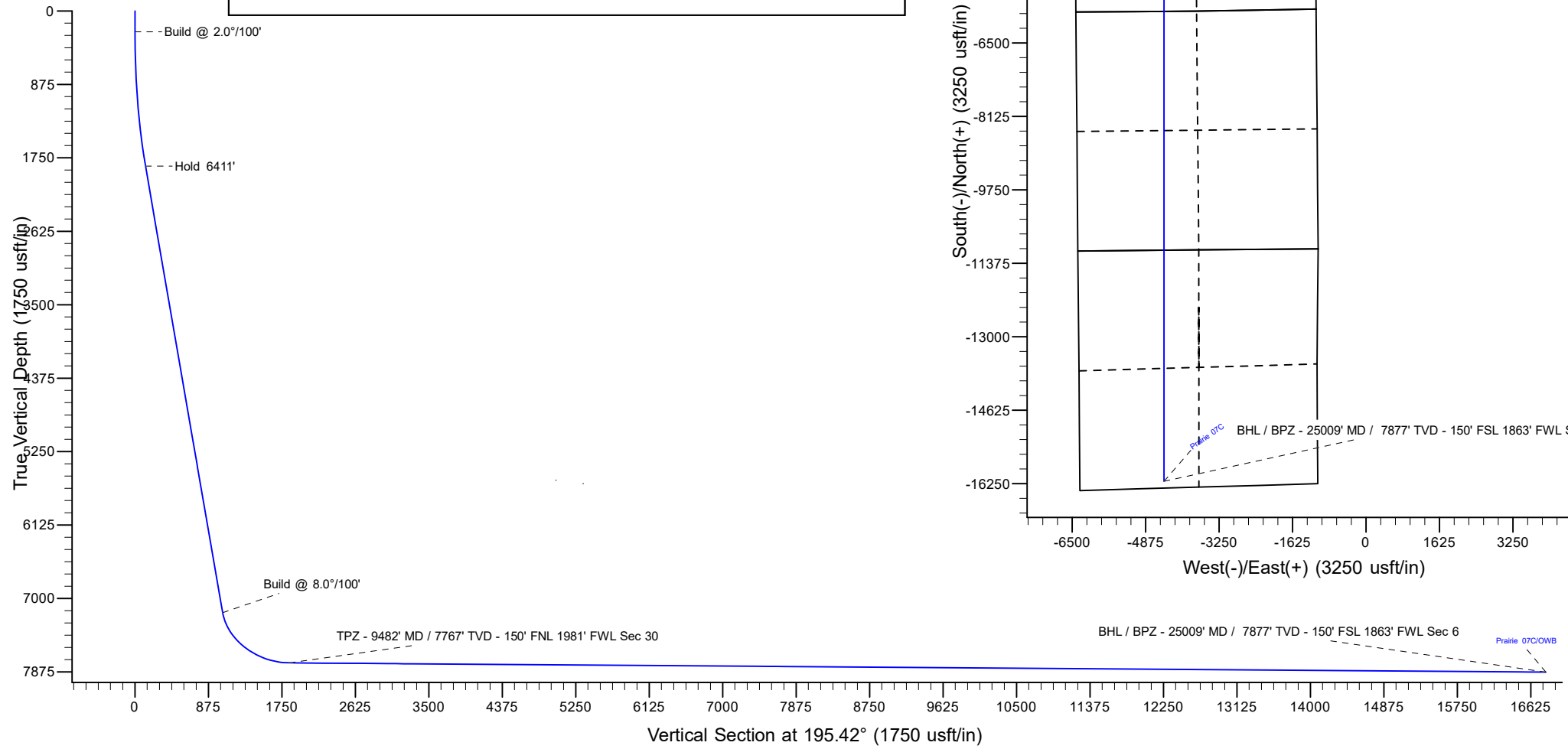
Project: ADAMS COUNTY  
 Site: Prairie Pad Sundry  
 Well: Prairie 07C  
 Wellbore: OWB  
 Design: Plan #1  
 Lat: 39.944639  
 Long: -104.804823  
 GL: 5048.0  
 KB: KB 25' @ 5073.0usft



WELL DETAILS: Prairie 07C						
+N/-S	+E/-W	Northing	Easting	Latitude	Longitude	
0.0	0.0	1223444.50	3194912.46	39.944639	-104.804823	

SECTION DETAILS									
MD	Inc	Azi	TVD	+N/-S	+E/-W	Dleg	TFace	VSec	Annotation
0.0	0.00	0.00	0.0	0.0	0.0	0.00	0.00	0.0	
250.0	0.00	0.00	250.0	0.0	0.0	0.00	0.00	0.0	Build @ 2.0°/100'
1947.2	33.94	270.55	1849.6	4.7	-488.2	2.00	270.55	125.3	Hold 6411'
3358.1	33.94	270.55	7168.1	39.2	-4067.7	0.00	0.00	1043.9	Build @ 8.0°/100'
9482.7	89.59	180.01	7767.0	-672.7	-4467.4	8.00	-90.68	1836.5	TPZ - 9482' MD / 7767' TVD - 150' FNL 1981' FWL Sec 30
25009.7	89.59	180.01	7877.0	-16199.3	-4468.8	0.00	0.00	16804.3	BHL / BPZ - 25009' MD / 7877' TVD - 150' FSL 1863' FWL Sec 6

DESIGN TARGET DETAILS		
Name	Latitude	Longitude
PRAIRIE 07C TPZ	39.942888	-104.820774
PRAIRIE 07C BHL	39.900266	-104.821203



# Ensign

## Anticollision Summary Report

<b>Company:</b>	PDC	<b>Local Co-ordinate Reference:</b>	Well Prairie 07C
<b>Project:</b>	ADAMS COUNTY	<b>TVD Reference:</b>	KB 25' @ 5073.0usft
<b>Reference Site:</b>	Prairie Pad Sundry	<b>MD Reference:</b>	KB 25' @ 5073.0usft
<b>Site Error:</b>	0.0 usft	<b>North Reference:</b>	Grid
<b>Reference Well:</b>	Prairie 07C	<b>Survey Calculation Method:</b>	Minimum Curvature
<b>Well Error:</b>	0.0 usft	<b>Output errors are at</b>	2.00 sigma
<b>Reference Wellbore</b>	OWB	<b>Database:</b>	US_EDM
<b>Reference Design:</b>	Plan #1	<b>Offset TVD Reference:</b>	Offset Datum

<b>Reference</b>	Plan #1		
<b>Filter type:</b>	GLOBAL FILTER APPLIED: All wellpaths within 200'+ 100/1000 of refere		
<b>Interpolation Method:</b>	MD Interval 100.0usft	<b>Error Model:</b>	ISCWSA
<b>Depth Range:</b>	Unlimited	<b>Scan Method:</b>	Closest Approach 3D
<b>Results Limited by:</b>	Maximum ellipse separation of 1,000.0 usft	<b>Error Surface:</b>	Pedal Curve
<b>Warning Levels Evaluated at:</b>	2.00 Sigma	<b>Casing Method:</b>	Not applied

<b>Survey Tool Program</b>	Date	10/11/2023		
<b>From (usft)</b>	<b>To (usft)</b>	<b>Survey (Wellbore)</b>	<b>Tool Name</b>	<b>Description</b>
0.0	25,009.7	Plan #1 (OWB)	MWD	OWSG MWD - Standard

Site Name Offset Well - Wellbore - Design	Reference Measured Depth (usft)	Offset Measured Depth (usft)	Distance Between Centres (usft)	Distance Between Ellipses (usft)	Separation Factor	Warning
Praire Offsets						
AMEND 1 - OWB - OWB	13,544.8	7,773.8	979.2	747.6	4.228	CC
AMEND 1 - OWB - OWB	13,600.0	7,774.2	980.7	745.6	4.170	ES
AMEND 1 - OWB - OWB	13,800.0	7,775.6	1,011.9	765.0	4.099	SF
ANDERSON 19-1-10HC - OWB - OWB	9,200.0	12,645.0	767.8	613.7	4.982	CC
ANDERSON 19-1-10HC - OWB - OWB	9,200.0	12,645.0	767.8	613.7	4.982	ES
ANDERSON 19-1-10HC - OWB - OWB	9,300.0	12,645.0	779.7	622.3	4.956	SF
BRIGHTON FARMS LTD 1 - OWB - OWB	18,915.8	7,837.8	1,016.6	695.4	3.165	CC
BRIGHTON FARMS LTD 1 - OWB - OWB	19,000.0	7,838.4	1,020.1	693.5	3.123	ES
BRIGHTON FARMS LTD 1 - OWB - OWB	19,100.0	7,839.1	1,033.2	701.6	3.116	SF
FREEMAN 1-A - OWB - OWB	18,700.0	7,851.3	1,732.4	1,412.6	5.418	SF
FREEMAN 1-A - OWB - OWB	18,765.2	7,851.8	1,731.1	1,412.2	5.428	CC, ES
GUTSHALL 1 - OWB - OWB	15,598.8	7,818.3	290.5	149.5	2.060	CC
GUTSHALL 1 - OWB - OWB	15,600.0	7,818.3	290.5	149.3	2.057	ES
GUTSHALL 1 - OWB - OWB	15,700.0	7,819.0	307.6	152.5	1.983	Collision Risk Procedures
PRAIRIE LE 17-016HC - OWB - OWB	100.0	94.9	217.4	216.0	152.429	CC
PRAIRIE LE 17-016HC - OWB - OWB	300.0	294.4	218.0	214.7	65.641	ES
PRAIRIE LE 17-016HC - OWB - OWB	1,000.0	982.3	314.0	303.5	29.862	SF
PRAIRIE LE 17-016HN - OWB - OWB	100.0	72.6	232.6	231.1	151.860	CC
PRAIRIE LE 17-016HN - OWB - OWB	300.0	272.6	233.3	230.0	69.504	ES
PRAIRIE LE 17-016HN - OWB - OWB	1,000.0	967.8	322.1	311.5	30.515	SF
PRAIRIE LE 17-018HNX - OWB - OWB	221.3	196.1	211.4	208.5	73.176	CC
PRAIRIE LE 17-018HNX - OWB - OWB	300.0	274.7	211.5	208.1	62.627	ES
PRAIRIE LE 17-018HNX - OWB - OWB	900.0	867.6	286.2	276.2	28.696	SF
PRAIRIE LE 17-019HC - OWB - OWB	212.3	207.7	194.4	191.5	66.451	CC
PRAIRIE LE 17-019HC - OWB - OWB	300.0	295.3	194.7	191.2	56.226	ES
PRAIRIE LE 17-019HC - OWB - OWB	900.0	891.6	269.2	259.3	27.121	SF
PRAIRIE LE 17-021HN - OWB - OWB	223.2	218.9	166.3	163.3	55.314	CC
PRAIRIE LE 17-021HN - OWB - OWB	300.0	295.9	166.3	162.8	47.645	ES
PRAIRIE LE 17-021HN - OWB - OWB	800.0	790.4	219.2	210.1	24.024	SF
PRAIRIE LE 17-022HN - OWB - OWB	100.0	74.8	180.9	179.3	116.691	CC
PRAIRIE LE 17-022HN - OWB - OWB	200.0	174.3	181.1	178.3	65.794	ES
PRAIRIE LE 17-022HN - OWB - OWB	900.0	871.6	254.7	244.8	25.652	SF
PRAIRIE LE 18-031HC - OWB - OWB	751.2	743.7	1.3	-4.9	0.209	No-Go Zone - Stop Drillin
PRAIRIE LE 18-039HC - OWB - OWB	100.0	74.8	136.0	134.5	87.248	CC
PRAIRIE LE 18-039HC - OWB - OWB	200.0	174.2	136.4	133.6	49.397	ES
PRAIRIE LE 18-039HC - OWB - OWB	800.0	772.9	187.8	178.6	20.266	SF
PRAIRIE LE 31-369HC - OWB - OWB	340.3	313.3	99.0	95.4	27.462	CC

CC - Min centre to center distance or convergent point, SF - min separation factor, ES - min ellipse separation

# Ensign

## Anticollision Summary Report

<b>Company:</b>	PDC	<b>Local Co-ordinate Reference:</b>	Well Prairie 07C
<b>Project:</b>	ADAMS COUNTY	<b>TVD Reference:</b>	KB 25' @ 5073.0usft
<b>Reference Site:</b>	Prairie Pad Sundry	<b>MD Reference:</b>	KB 25' @ 5073.0usft
<b>Site Error:</b>	0.0 usft	<b>North Reference:</b>	Grid
<b>Reference Well:</b>	Prairie 07C	<b>Survey Calculation Method:</b>	Minimum Curvature
<b>Well Error:</b>	0.0 usft	<b>Output errors are at</b>	2.00 sigma
<b>Reference Wellbore</b>	OWB	<b>Database:</b>	US_EDM
<b>Reference Design:</b>	Plan #1	<b>Offset TVD Reference:</b>	Offset Datum

Summary						
Site Name	Reference Measured Depth (usft)	Offset Measured Depth (usft)	Distance Between Centres (usft)	Distance Between Ellipses (usft)	Separation Factor	Warning
Offset Well - Wellbore - Design						
<b>Prairie Offsets</b>						
PRAIRIE LE 31-369HC - OWB - OWB	400.0	372.1	99.3	95.3	24.893	ES
PRAIRIE LE 31-369HC - OWB - OWB	19,500.0	19,286.0	1,083.1	689.4	2.751	SF
RICHEY 1-19 - OWB - OWB	8,630.9	7,359.3	583.2	376.5	2.821	CC, ES
RICHEY 1-19 - OWB - OWB	8,700.0	7,411.6	587.9	376.8	2.785	SF
SABLE FARMS 22-31 - OWB - OWB	16,247.2	7,821.9	288.3	12.4	1.045	Collision Avoidance Req.,
SABLE FARMS 22-31 - OWB - OWB	16,300.0	7,822.3	293.1	8.4	1.029	Collision Avoidance Req.,
<b>Prairie Pad Sundry</b>						
Prairie 01C - OWB - Plan #1	1,007.7	981.2	101.7	87.3	7.053	CC
Prairie 01C - OWB - Plan #1	9,527.3	9,236.9	126.8	11.7	1.101	Collision Avoidance Req.,
Prairie 02N - OWB - Plan #1	896.8	877.3	87.5	74.4	6.686	CC
Prairie 02N - OWB - Plan #1	8,716.4	9,471.6	103.4	-5.6	0.949	No-Go Zone - Stop Drillin
Prairie 03N - OWB - Plan #1	780.7	767.5	72.9	61.3	6.301	CC
Prairie 03N - OWB - Plan #1	900.0	883.5	73.4	60.4	5.659	ES
Prairie 03N - OWB - Plan #1	1,100.0	1,077.5	77.9	63.3	5.338	SF
Prairie 04N - OWB - Plan #1	700.0	691.1	58.2	47.8	5.574	CC
Prairie 04N - OWB - Plan #1	800.0	788.8	58.7	47.0	5.015	ES
Prairie 04N - OWB - Plan #1	900.0	886.4	60.3	47.7	4.766	SF
Prairie 05C - OWB - Plan #1	547.5	544.6	29.1	21.0	3.608	CC
Prairie 05C - OWB - Plan #1	600.0	596.5	29.2	20.3	3.280	ES
Prairie 05C - OWB - Plan #1	700.0	695.2	30.6	20.5	3.044	SF
Prairie 06N - OWB - Plan #1	455.2	454.2	14.4	8.2	2.300	CC
Prairie 06N - OWB - Plan #1	500.0	498.7	14.6	7.4	2.030	ES
Prairie 06N - OWB - Plan #1	600.0	598.0	16.4	8.2	1.998	Collision Risk Procedures
Prairie 08N - OWB - Plan #1	1,830.2	1,838.1	12.8	-11.2	0.534	No-Go Zone - Stop Drillin
Prairie 09N - OWB - Plan #1	1,441.0	1,453.2	27.7	8.0	1.405	Collision Avoidance Req.,
Prairie 09N - OWB - Plan #1	1,500.0	1,512.1	28.3	8.0	1.395	Collision Avoidance Req.,
Prairie 10C - OWB - Plan #1	1,230.9	1,246.0	42.6	25.2	2.456	CC, ES
Prairie 10C - OWB - Plan #1	1,300.0	1,315.1	43.4	25.4	2.413	SF
Prairie 11N - OWB - Plan #1	1,100.0	1,117.4	57.6	41.8	3.640	CC
Prairie 11N - OWB - Plan #1	1,103.3	1,120.7	57.7	41.8	3.634	ES
Prairie 11N - OWB - Plan #1	1,200.0	1,217.4	59.7	42.9	3.557	SF
Prairie 12N - OWB - Plan #1	900.0	916.5	73.4	60.1	5.522	CC
Prairie 12N - OWB - Plan #1	900.2	916.7	73.4	60.1	5.521	ES
Prairie 12N - OWB - Plan #1	1,000.0	1,016.5	75.6	61.4	5.315	SF

CC - Min centre to center distance or covergent point, SF - min separation factor, ES - min ellipse separation

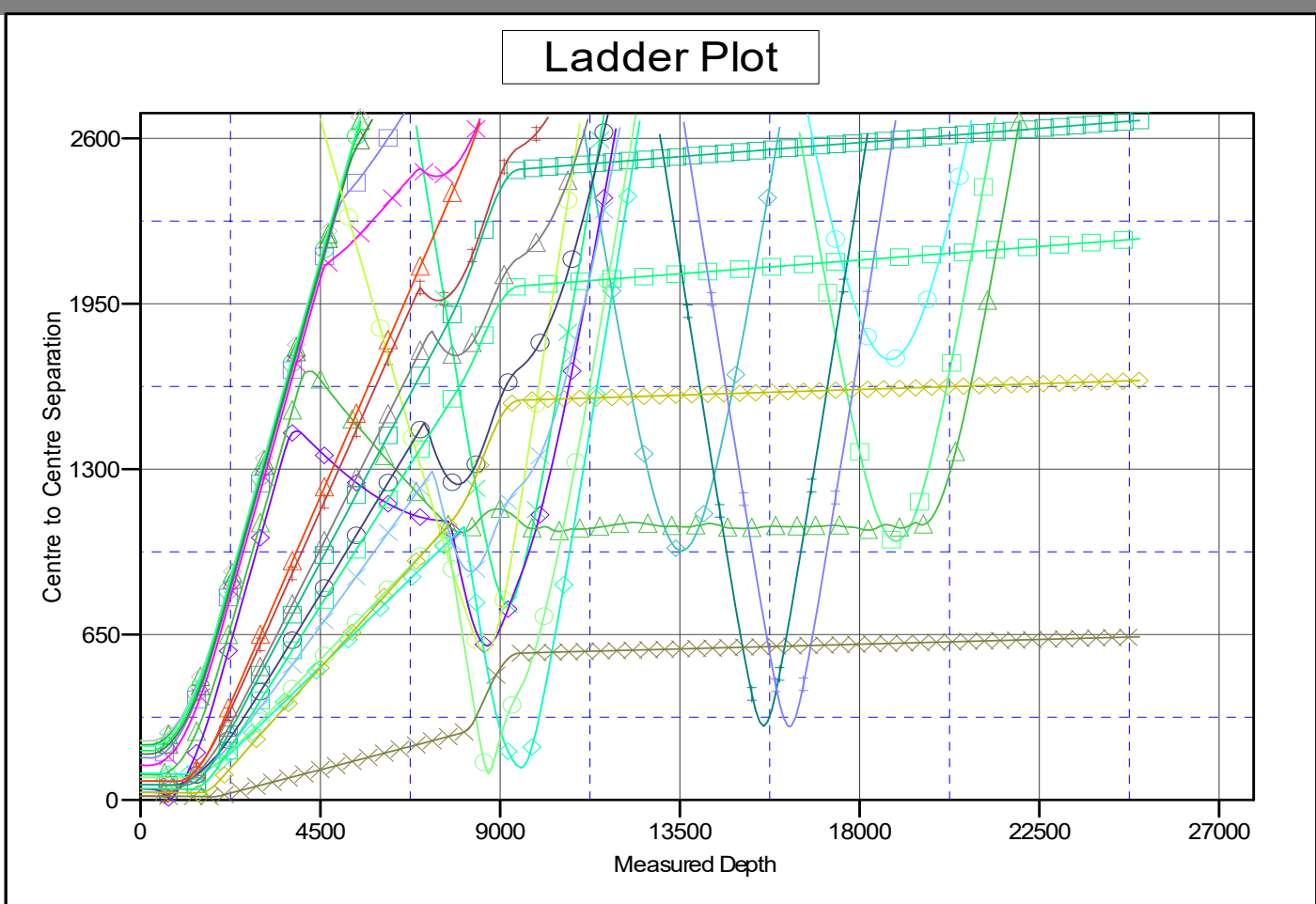
# Ensign

## Anticollision Summary Report

<b>Company:</b> PDC	<b>Local Co-ordinate Reference:</b> Well Prairie 07C
<b>Project:</b> ADAMS COUNTY	<b>TVD Reference:</b> KB 25' @ 5073.0usft
<b>Reference Site:</b> Prairie Pad Sundry	<b>MD Reference:</b> KB 25' @ 5073.0usft
<b>Site Error:</b> 0.0 usft	<b>North Reference:</b> Grid
<b>Reference Well:</b> Prairie 07C	<b>Survey Calculation Method:</b> Minimum Curvature
<b>Well Error:</b> 0.0 usft	<b>Output errors are at:</b> 2.00 sigma
<b>Reference Wellbore:</b> OWB	<b>Database:</b> US_EDM
<b>Reference Design:</b> Plan #1	<b>Offset TVD Reference:</b> Offset Datum

Reference Depths are relative to KB 25' @ 5073.0usft  
 Offset Depths are relative to Offset Datum  
 Central Meridian is 105° 30' 0.000 W

Coordinates are relative to: Prairie 07C  
 Coordinate System is US State Plane 1983, Colorado Northern Zone  
 Grid Convergence at Surface is: 0.45°



### LEGEND

- |                                     |                                    |                                |
|-------------------------------------|------------------------------------|--------------------------------|
| ◆ AMEND 1, OWB, OWB V0              | □ PRAIRIE LE 17-021HN, OWB, OWB V0 | ✕ Prairie 03N, OWB, Plan #1 V0 |
| ✕ ANDERSON 19-1-10HC, OWB, OWB V0   | ▲ PRAIRIE LE 17-022HN, OWB, OWB V0 | ○ Prairie 04N, OWB, Plan #1 V0 |
| □ BRIGHTON FARMS LTD 1, OWB, OWB V0 | ◆ PRAIRIE LE 18-031HC, OWB, OWB V0 | ▲ Prairie 05C, OWB, Plan #1 V0 |
| ○ FREEMAN 1-A, OWB, OWB V0          | ✕ PRAIRIE LE 18-039HC, OWB, OWB V0 | ◆ Prairie 06N, OWB, Plan #1 V0 |
| ◆ GUTSHALL 1, OWB, OWB V0           | ▲ PRAIRIE LE 31-369HC, OWB, OWB V0 | ✕ Prairie 08N, OWB, Plan #1 V0 |
| ▲ PRAIRIE LE 17-016HC, OWB, OWB V0  | ○ RICHEY 1-19, OWB, OWB V0         | ◆ Prairie 09N, OWB, Plan #1 V0 |
| ▲ PRAIRIE LE 17-016HN, OWB, OWB V0  | ◆ SABLE FARMS 22-31, OWB, OWB V0   | □ Prairie 10C, OWB, Plan #1 V0 |
| ◆ PRAIRIE LE 17-018HNX, OWB, OWB V0 | ◆ Prairie 01C, OWB, Plan #1 V0     | □ Prairie 11N, OWB, Plan #1 V0 |
| ○ PRAIRIE LE 17-019HC, OWB, OWB V0  | ○ Prairie 02N, OWB, Plan #1 V0     | ▲ Prairie 12N, OWB, Plan #1 V0 |

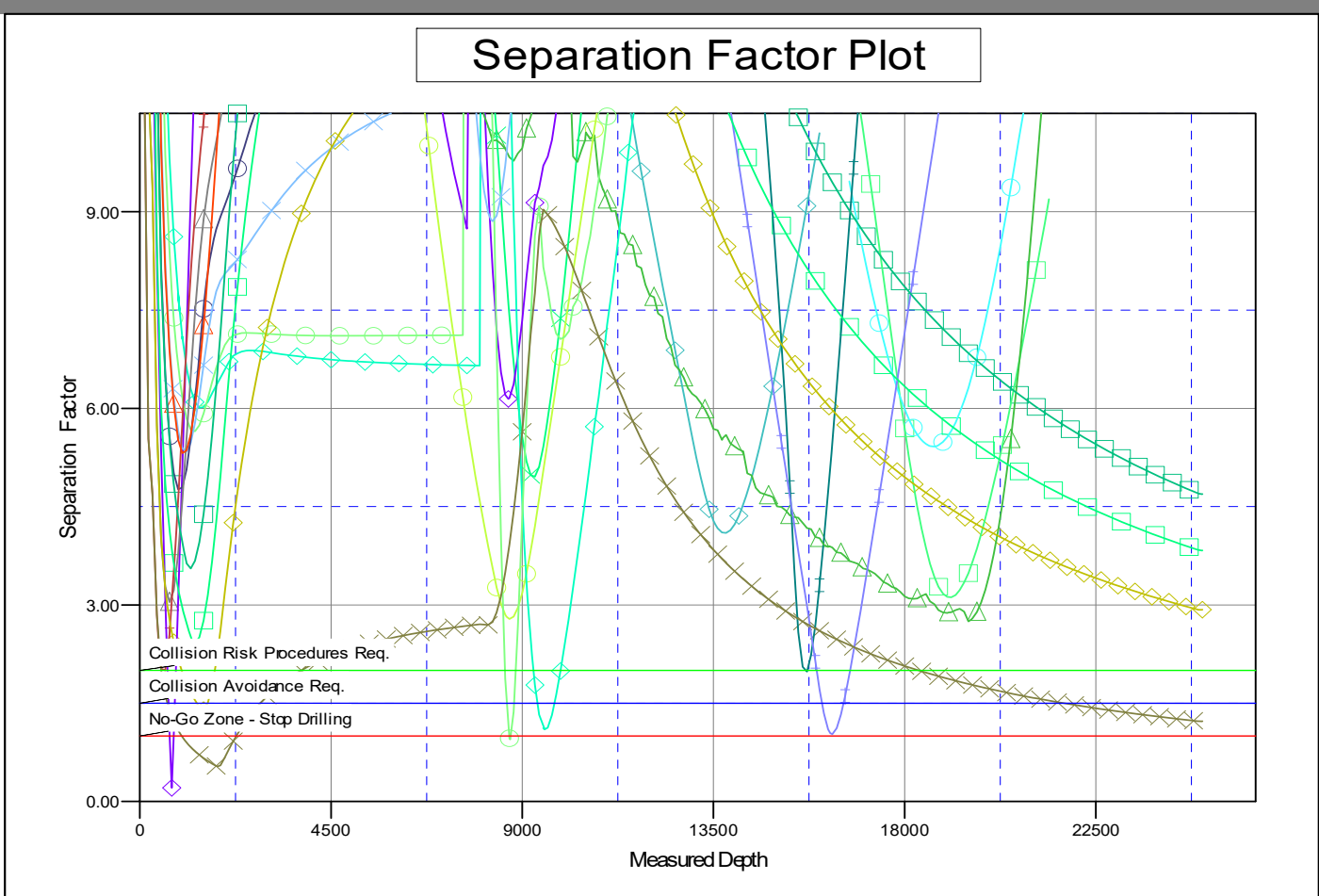
# Ensign

## Anticollision Summary Report

<b>Company:</b> PDC	<b>Local Co-ordinate Reference:</b> Well Prairie 07C
<b>Project:</b> ADAMS COUNTY	<b>TVD Reference:</b> KB 25' @ 5073.0usft
<b>Reference Site:</b> Prairie Pad Sundry	<b>MD Reference:</b> KB 25' @ 5073.0usft
<b>Site Error:</b> 0.0 usft	<b>North Reference:</b> Grid
<b>Reference Well:</b> Prairie 07C	<b>Survey Calculation Method:</b> Minimum Curvature
<b>Well Error:</b> 0.0 usft	<b>Output errors are at:</b> 2.00 sigma
<b>Reference Wellbore:</b> OWB	<b>Database:</b> US_EDM
<b>Reference Design:</b> Plan #1	<b>Offset TVD Reference:</b> Offset Datum

Reference Depths are relative to KB 25' @ 5073.0usft  
 Offset Depths are relative to Offset Datum  
 Central Meridian is 105° 30' 0.000 W

Coordinates are relative to: Prairie 07C  
 Coordinate System is US State Plane 1983, Colorado Northern Zone  
 Grid Convergence at Surface is: 0.45°



#### LEGEND

◆ AMEND 1, OWB, OWB V0	▣ PRAIRIE LE 17-021HN, OWB, OWB V0	✕ Prairie 03N, OWB, Plan #1 V0
✕ ANDERSON 19-1-10HC, OWB, OWB V0	▲ PRAIRIE LE 17-022HN, OWB, OWB V0	○ Prairie 04N, OWB, Plan #1 V0
▣ BRIGHTON FARMS LTD 1, OWB, OWB V0	◆ PRAIRIE LE 18-031HC, OWB, OWB V0	▲ Prairie 05C, OWB, Plan #1 V0
○ FREEMAN 1-A, OWB, OWB V0	✕ PRAIRIE LE 18-039HC, OWB, OWB V0	✕ Prairie 06N, OWB, Plan #1 V0
✕ GUTSHALL 1, OWB, OWB V0	▲ PRAIRIE LE 31-369HC, OWB, OWB V0	✕ Prairie 08N, OWB, Plan #1 V0
▲ PRAIRIE LE 17-016HC, OWB, OWB V0	○ RICHEY 1-19, OWB, OWB V0	◆ Prairie 09N, OWB, Plan #1 V0
◆ PRAIRIE LE 17-016HN, OWB, OWB V0	✕ SABLE FARMS 22-31, OWB, OWB V0	▣ Prairie 10C, OWB, Plan #1 V0
✕ PRAIRIE LE 17-018HNX, OWB, OWB V0	◆ Prairie 01C, OWB, Plan #1 V0	▣ Prairie 11N, OWB, Plan #1 V0
○ PRAIRIE LE 17-019HC, OWB, OWB V0	○ Prairie 02N, OWB, Plan #1 V0	▲ Prairie 12N, OWB, Plan #1 V0