

Project: Rio Blanco County, CO  
 Site: ELU A18 495 Pad  
 Well: ELU A18 FED 13C-7 495  
 Wellbore: Wellbore #1  
 Design: Design #4  
 Latitude: 39.709120  
 Longitude: -108.104348  
 Ground Level: 8029.0  
 RKB @ 8059.0usft (30')

PROJECT DETAILS: Rio Blanco County, CO

Geodetic System: Universal Transverse Mercator (US Survey Feet)  
 Datum: NAD 1927 - Western US  
 Ellipsoid: Clarke 1866  
 Zone: Zone 12N (114 W to 108 W)  
 System Datum: Mean Sea Level

REFERENCE INFORMATION

Vertical (TVD) Reference: RKB @ 8059.0usft (30')  
 Section (VS) Reference: Slot - 13C-7(0.0N, 0.0E)  
 Measured Depth Reference: RKB @ 8059.0usft (30')  
 Calculation Method: Minimum Curvature

SECTION DETAILS

MD	Inc	Azi	TVD	+N/-S	+E/-W	Dieg	TFace	V Sect	Annotation
0.0	0.00	0.00	0.0	0.0	0.0	0.00	0.00	0.0	
320.0	0.00	0.00	320.0	0.0	0.0	0.00	0.00	0.0	Build 3° / 100'
586.7	8.00	342.00	585.8	17.7	-5.7	3.00	342.00	18.5	EOB @ 8.00° Inc. / 342.00° Azm / Build 3° / 100'
932.8	18.23	350.53	922.5	94.2	-22.1	3.00	14.92	96.7	EOB @ 18.23° Inc. / 350.53° Azm
8586.0	18.23	350.53	8191.5	2455.9	-416.1	0.00	0.00	2489.2	Drop 3° / 100'
9193.7	0.00	0.00	8789.0	2550.5	-431.9	3.00	180.00	2585.0	EOD @ Vertical / Build 1.5° / 100'
9387.0	1.24	240.00	8871.7	2550.0	-432.7	1.50	240.00	2584.7	EOB @ 1.24° Inc. / 240.00° Azm
12517.0	1.24	240.00	13447.0	2500.5	-518.5	0.00	0.00	2553.6	TD @ 13852.8' MD / 13447.0' TVD

DESIGN TARGET DETAILS

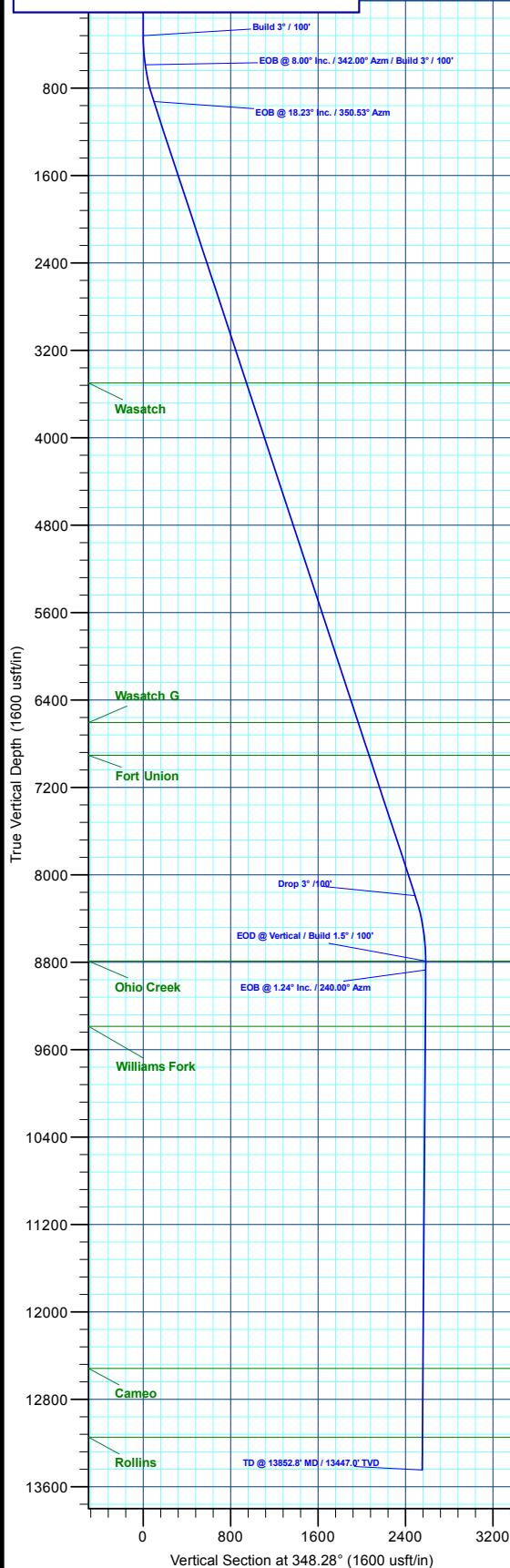
Name	TVD	+N/-S	+E/-W	Northing	Easting	Latitude	Longitude
13C-7 - OHCR	8789.0	2550.5	-431.9	14435817.97	2454348.74	39.716120	-108.105863
13C-7 - PBHL	13447.0	2500.5	-518.5	14435765.20	2454263.80	39.715982	-108.106190

WELL DETAILS: ELU A18 FED 13C-7 495

		Ground Level : 8029.0					
+N/-S	+E/-W	Northing	Easting	Latitude	Longitude		
0.0	0.0	14433282.80	2454862.80	39.709120	-108.104348	13C-7	

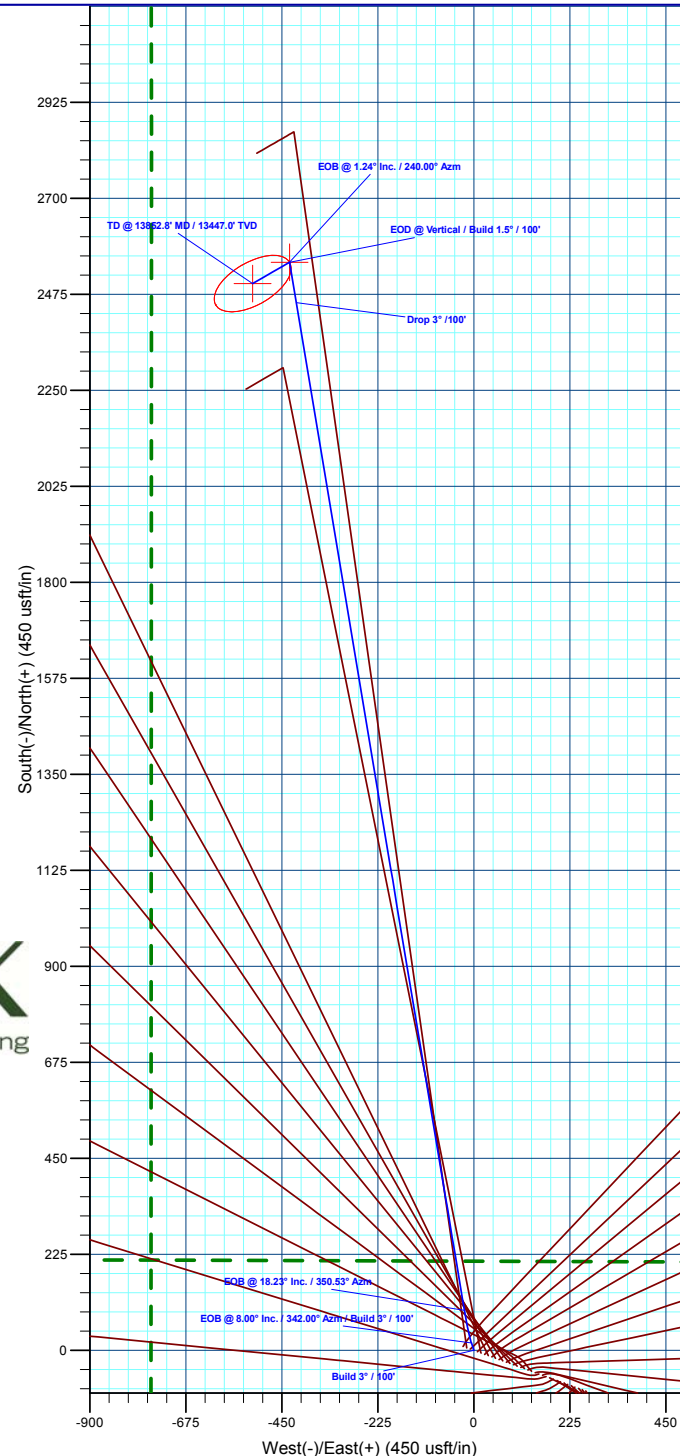
FORMATION TOP DETAILS

TVDPath	MDPath	Formation
3498.0	3644.4	Wasatch
6607.0	6917.8	Wasatch G
6907.0	7233.6	Fort Union
8789.0	9193.7	Ohio Creek
9387.0	9791.8	Williams Fork
12517.0	12922.6	Cameo
13147.0	13552.7	Rollins



**T M** Azimuths to True North  
 Magnetic North: 9.42°

Magnetic Field  
 Strength: 51156.9nT  
 Dip Angle: 65.82°  
 Date: 8/17/2020  
 Model: HDGM2020



Plan: Design #4 (ELU A18 FED 13C-7 495/Wellbore #1)

Created By: Will Jircik Date: 20:02, October 18 2023



## **Caerus Oil & Gas**

**Rio Blanco County, CO**

**ELU A18 495 Pad**

**ELU A18 FED 13C-7 495 - Slot 13C-7**

**Wellbore #1**

**Plan: Design #4**

## **KLX Well Planning Report**

**18 October, 2023**



<b>Database:</b>	EDM 5000.1 Single User Db	<b>Local Co-ordinate Reference:</b>	Well ELU A18 FED 13C-7 495 - Slot 13C-7
<b>Company:</b>	Caerus Oil & Gas	<b>TVD Reference:</b>	RKB @ 8059.0usft (30')
<b>Project:</b>	Rio Blanco County, CO	<b>MD Reference:</b>	RKB @ 8059.0usft (30')
<b>Site:</b>	ELU A18 495 Pad	<b>North Reference:</b>	True
<b>Well:</b>	ELU A18 FED 13C-7 495	<b>Survey Calculation Method:</b>	Minimum Curvature
<b>Wellbore:</b>	Wellbore #1		
<b>Design:</b>	Design #4		

<b>Project</b>	Rio Blanco County, CO		
<b>Map System:</b>	Universal Transverse Mercator (US Survey Feet)	<b>System Datum:</b>	Mean Sea Level
<b>Geo Datum:</b>	NAD 1927 - Western US		
<b>Map Zone:</b>	Zone 12N (114 W to 108 W)		

<b>Site</b>	ELU A18 495 Pad				
<b>Site Position:</b>	<b>Northing:</b>	14,433,279.80 usft	<b>Latitude:</b>	39.709109	
<b>From:</b> Map	<b>Easting:</b>	2,454,904.40 usft	<b>Longitude:</b>	-108.104201	
<b>Position Uncertainty:</b>	0.0 usft	<b>Slot Radius:</b>	13-3/16 "	<b>Grid Convergence:</b>	1.85 °

<b>Well</b>	ELU A18 FED 13C-7 495 - Slot 13C-7					
<b>Well Position</b>	<b>+N/-S</b>	4.3 usft	<b>Northing:</b>	14,433,282.80 usft	<b>Latitude:</b>	39.709121
	<b>+E/-W</b>	-41.5 usft	<b>Easting:</b>	2,454,862.80 usft	<b>Longitude:</b>	-108.104348
<b>Position Uncertainty</b>		0.0 usft	<b>Wellhead Elevation:</b>		<b>Ground Level:</b>	8,029.0 usft

<b>Wellbore</b>	Wellbore #1				
<b>Magnetics</b>	<b>Model Name</b>	<b>Sample Date</b>	<b>Declination (°)</b>	<b>Dip Angle (°)</b>	<b>Field Strength (nT)</b>
	HDGM2020	8/17/2020	9.42	65.82	51,156.90000000

<b>Design</b>	Design #4			
<b>Audit Notes:</b>				
<b>Version:</b>	<b>Phase:</b>	PLAN	<b>Tie On Depth:</b>	0.0
<b>Vertical Section:</b>	<b>Depth From (TVD) (usft)</b>	<b>+N/-S (usft)</b>	<b>+E/-W (usft)</b>	<b>Direction (°)</b>
	0.0	0.0	0.0	348.28

<b>Plan Sections</b>										
Measured Depth (usft)	Inclination (°)	Azimuth (°)	Vertical Depth (usft)	+N/-S (usft)	+E/-W (usft)	Dogleg Rate (°/100usft)	Build Rate (°/100usft)	Turn Rate (°/100usft)	TFO (°)	Target
0.0	0.00	0.00	0.0	0.0	0.0	0.00	0.00	0.00	0.00	
320.0	0.00	0.00	320.0	0.0	0.0	0.00	0.00	0.00	0.00	
586.7	8.00	342.00	585.8	17.7	-5.7	3.00	3.00	0.00	342.00	
932.8	18.23	350.53	922.5	94.2	-22.1	3.00	2.96	2.46	14.92	
8,586.0	18.23	350.53	8,191.5	2,455.9	-416.1	0.00	0.00	0.00	0.00	
9,193.7	0.00	0.00	8,789.0	2,550.5	-431.9	3.00	-3.00	0.00	180.00	13C-7 - OHCR
9,276.4	1.24	240.00	8,871.7	2,550.0	-432.7	1.50	1.50	-145.06	240.00	
13,852.8	1.24	240.00	13,447.0	2,500.5	-518.5	0.00	0.00	0.00	0.00	13C-7 - PBHL

<b>Database:</b>	EDM 5000.1 Single User Db	<b>Local Co-ordinate Reference:</b>	Well ELU A18 FED 13C-7 495 - Slot 13C-7
<b>Company:</b>	Caerus Oil & Gas	<b>TVD Reference:</b>	RKB @ 8059.0usft (30')
<b>Project:</b>	Rio Blanco County, CO	<b>MD Reference:</b>	RKB @ 8059.0usft (30')
<b>Site:</b>	ELU A18 495 Pad	<b>North Reference:</b>	True
<b>Well:</b>	ELU A18 FED 13C-7 495	<b>Survey Calculation Method:</b>	Minimum Curvature
<b>Wellbore:</b>	Wellbore #1		
<b>Design:</b>	Design #4		

Planned Survey									
Measured Depth (usft)	Inclination (°)	Azimuth (°)	Vertical Depth (usft)	+N/-S (usft)	+E/-W (usft)	Vertical Section (usft)	Dogleg Rate (°/100usft)	Build Rate (°/100usft)	Turn Rate (°/100usft)
0.0	0.00	0.00	0.0	0.0	0.0	0.0	0.00	0.00	0.00
100.0	0.00	0.00	100.0	0.0	0.0	0.0	0.00	0.00	0.00
200.0	0.00	0.00	200.0	0.0	0.0	0.0	0.00	0.00	0.00
300.0	0.00	0.00	300.0	0.0	0.0	0.0	0.00	0.00	0.00
<b>Build 3° / 100'</b>									
320.0	0.00	0.00	320.0	0.0	0.0	0.0	0.00	0.00	0.00
400.0	2.40	342.00	400.0	1.6	-0.5	1.7	3.00	3.00	0.00
500.0	5.40	342.00	499.7	8.1	-2.6	8.4	3.00	3.00	0.00
<b>EOB @ 8.00° Inc. / 342.00° Azm / Build 3° / 100'</b>									
586.7	8.00	342.00	585.8	17.7	-5.7	18.5	3.00	3.00	0.00
600.0	8.39	342.71	599.0	19.5	-6.3	20.4	3.00	2.90	5.29
700.0	11.32	346.46	697.5	36.0	-10.8	37.4	3.00	2.93	3.75
800.0	14.28	348.68	795.0	57.6	-15.5	59.6	3.00	2.96	2.22
900.0	17.25	350.15	891.2	84.3	-20.5	86.7	3.00	2.97	1.47
<b>EOB @ 18.23° Inc. / 350.53° Azm</b>									
932.8	18.23	350.53	922.5	94.2	-22.1	96.7	3.00	2.98	1.16
1,000.0	18.23	350.53	986.3	114.9	-25.6	117.7	0.00	0.00	0.00
1,100.0	18.23	350.53	1,081.3	145.8	-30.7	149.0	0.00	0.00	0.00
1,200.0	18.23	350.53	1,176.3	176.7	-35.9	180.3	0.00	0.00	0.00
1,300.0	18.23	350.53	1,271.3	207.5	-41.0	211.5	0.00	0.00	0.00
1,400.0	18.23	350.53	1,366.2	238.4	-46.2	242.8	0.00	0.00	0.00
1,500.0	18.23	350.53	1,461.2	269.2	-51.3	274.0	0.00	0.00	0.00
1,600.0	18.23	350.53	1,556.2	300.1	-56.5	305.3	0.00	0.00	0.00
1,700.0	18.23	350.53	1,651.2	330.9	-61.6	336.6	0.00	0.00	0.00
1,800.0	18.23	350.53	1,746.2	361.8	-66.8	367.8	0.00	0.00	0.00
1,900.0	18.23	350.53	1,841.1	392.7	-71.9	399.1	0.00	0.00	0.00
2,000.0	18.23	350.53	1,936.1	423.5	-77.1	430.4	0.00	0.00	0.00
2,100.0	18.23	350.53	2,031.1	454.4	-82.2	461.6	0.00	0.00	0.00
2,200.0	18.23	350.53	2,126.1	485.2	-87.4	492.9	0.00	0.00	0.00
2,300.0	18.23	350.53	2,221.1	516.1	-92.5	524.1	0.00	0.00	0.00
2,400.0	18.23	350.53	2,316.0	547.0	-97.7	555.4	0.00	0.00	0.00
2,500.0	18.23	350.53	2,411.0	577.8	-102.8	586.7	0.00	0.00	0.00
2,600.0	18.23	350.53	2,506.0	608.7	-108.0	617.9	0.00	0.00	0.00
2,700.0	18.23	350.53	2,601.0	639.5	-113.1	649.2	0.00	0.00	0.00
2,800.0	18.23	350.53	2,696.0	670.4	-118.3	680.4	0.00	0.00	0.00
2,900.0	18.23	350.53	2,790.9	701.3	-123.4	711.7	0.00	0.00	0.00
3,000.0	18.23	350.53	2,885.9	732.1	-128.6	743.0	0.00	0.00	0.00
3,100.0	18.23	350.53	2,980.9	763.0	-133.7	774.2	0.00	0.00	0.00
3,200.0	18.23	350.53	3,075.9	793.8	-138.9	805.5	0.00	0.00	0.00
3,300.0	18.23	350.53	3,170.9	824.7	-144.0	836.7	0.00	0.00	0.00
3,400.0	18.23	350.53	3,265.8	855.5	-149.2	868.0	0.00	0.00	0.00
3,500.0	18.23	350.53	3,360.8	886.4	-154.3	899.3	0.00	0.00	0.00
3,600.0	18.23	350.53	3,455.8	917.3	-159.4	930.5	0.00	0.00	0.00
<b>Wasatch</b>									
3,644.4	18.23	350.53	3,498.0	931.0	-161.7	944.4	0.00	0.00	0.00
3,700.0	18.23	350.53	3,550.8	948.1	-164.6	961.8	0.00	0.00	0.00
3,800.0	18.23	350.53	3,645.8	979.0	-169.7	993.1	0.00	0.00	0.00
3,900.0	18.23	350.53	3,740.7	1,009.8	-174.9	1,024.3	0.00	0.00	0.00
4,000.0	18.23	350.53	3,835.7	1,040.7	-180.0	1,055.6	0.00	0.00	0.00
4,100.0	18.23	350.53	3,930.7	1,071.6	-185.2	1,086.8	0.00	0.00	0.00
4,200.0	18.23	350.53	4,025.7	1,102.4	-190.3	1,118.1	0.00	0.00	0.00
4,300.0	18.23	350.53	4,120.7	1,133.3	-195.5	1,149.4	0.00	0.00	0.00
4,400.0	18.23	350.53	4,215.6	1,164.1	-200.6	1,180.6	0.00	0.00	0.00
4,500.0	18.23	350.53	4,310.6	1,195.0	-205.8	1,211.9	0.00	0.00	0.00

<b>Database:</b>	EDM 5000.1 Single User Db	<b>Local Co-ordinate Reference:</b>	Well ELU A18 FED 13C-7 495 - Slot 13C-7
<b>Company:</b>	Caerus Oil & Gas	<b>TVD Reference:</b>	RKB @ 8059.0usft (30')
<b>Project:</b>	Rio Blanco County, CO	<b>MD Reference:</b>	RKB @ 8059.0usft (30')
<b>Site:</b>	ELU A18 495 Pad	<b>North Reference:</b>	True
<b>Well:</b>	ELU A18 FED 13C-7 495	<b>Survey Calculation Method:</b>	Minimum Curvature
<b>Wellbore:</b>	Wellbore #1		
<b>Design:</b>	Design #4		

Planned Survey									
Measured Depth (usft)	Inclination (°)	Azimuth (°)	Vertical Depth (usft)	+N/-S (usft)	+E/-W (usft)	Vertical Section (usft)	Dogleg Rate (°/100usft)	Build Rate (°/100usft)	Turn Rate (°/100usft)
4,600.0	18.23	350.53	4,405.6	1,225.9	-210.9	1,243.1	0.00	0.00	0.00
4,700.0	18.23	350.53	4,500.6	1,256.7	-216.1	1,274.4	0.00	0.00	0.00
4,800.0	18.23	350.53	4,595.6	1,287.6	-221.2	1,305.7	0.00	0.00	0.00
4,900.0	18.23	350.53	4,690.5	1,318.4	-226.4	1,336.9	0.00	0.00	0.00
5,000.0	18.23	350.53	4,785.5	1,349.3	-231.5	1,368.2	0.00	0.00	0.00
5,100.0	18.23	350.53	4,880.5	1,380.1	-236.7	1,399.5	0.00	0.00	0.00
5,200.0	18.23	350.53	4,975.5	1,411.0	-241.8	1,430.7	0.00	0.00	0.00
5,300.0	18.23	350.53	5,070.5	1,441.9	-247.0	1,462.0	0.00	0.00	0.00
5,400.0	18.23	350.53	5,165.4	1,472.7	-252.1	1,493.2	0.00	0.00	0.00
5,500.0	18.23	350.53	5,260.4	1,503.6	-257.3	1,524.5	0.00	0.00	0.00
5,600.0	18.23	350.53	5,355.4	1,534.4	-262.4	1,555.8	0.00	0.00	0.00
5,700.0	18.23	350.53	5,450.4	1,565.3	-267.6	1,587.0	0.00	0.00	0.00
5,800.0	18.23	350.53	5,545.4	1,596.2	-272.7	1,618.3	0.00	0.00	0.00
5,900.0	18.23	350.53	5,640.3	1,627.0	-277.8	1,649.5	0.00	0.00	0.00
6,000.0	18.23	350.53	5,735.3	1,657.9	-283.0	1,680.8	0.00	0.00	0.00
6,100.0	18.23	350.53	5,830.3	1,688.7	-288.1	1,712.1	0.00	0.00	0.00
6,200.0	18.23	350.53	5,925.3	1,719.6	-293.3	1,743.3	0.00	0.00	0.00
6,300.0	18.23	350.53	6,020.3	1,750.5	-298.4	1,774.6	0.00	0.00	0.00
6,400.0	18.23	350.53	6,115.2	1,781.3	-303.6	1,805.9	0.00	0.00	0.00
6,500.0	18.23	350.53	6,210.2	1,812.2	-308.7	1,837.1	0.00	0.00	0.00
6,600.0	18.23	350.53	6,305.2	1,843.0	-313.9	1,868.4	0.00	0.00	0.00
6,700.0	18.23	350.53	6,400.2	1,873.9	-319.0	1,899.6	0.00	0.00	0.00
6,800.0	18.23	350.53	6,495.2	1,904.8	-324.2	1,930.9	0.00	0.00	0.00
6,900.0	18.23	350.53	6,590.1	1,935.6	-329.3	1,962.2	0.00	0.00	0.00
<b>Wasatch G</b>									
6,917.8	18.23	350.53	6,607.0	1,941.1	-330.2	1,967.7	0.00	0.00	0.00
7,000.0	18.23	350.53	6,685.1	1,966.5	-334.5	1,993.4	0.00	0.00	0.00
7,100.0	18.23	350.53	6,780.1	1,997.3	-339.6	2,024.7	0.00	0.00	0.00
7,200.0	18.23	350.53	6,875.1	2,028.2	-344.8	2,055.9	0.00	0.00	0.00
<b>Fort Union</b>									
7,233.6	18.23	350.53	6,907.0	2,038.6	-346.5	2,066.4	0.00	0.00	0.00
7,300.0	18.23	350.53	6,970.1	2,059.0	-349.9	2,087.2	0.00	0.00	0.00
7,400.0	18.23	350.53	7,065.0	2,089.9	-355.1	2,118.5	0.00	0.00	0.00
7,500.0	18.23	350.53	7,160.0	2,120.8	-360.2	2,149.7	0.00	0.00	0.00
7,600.0	18.23	350.53	7,255.0	2,151.6	-365.4	2,181.0	0.00	0.00	0.00
7,700.0	18.23	350.53	7,350.0	2,182.5	-370.5	2,212.2	0.00	0.00	0.00
7,800.0	18.23	350.53	7,445.0	2,213.3	-375.7	2,243.5	0.00	0.00	0.00
7,900.0	18.23	350.53	7,539.9	2,244.2	-380.8	2,274.8	0.00	0.00	0.00
8,000.0	18.23	350.53	7,634.9	2,275.1	-386.0	2,306.0	0.00	0.00	0.00
8,100.0	18.23	350.53	7,729.9	2,305.9	-391.1	2,337.3	0.00	0.00	0.00
8,200.0	18.23	350.53	7,824.9	2,336.8	-396.3	2,368.6	0.00	0.00	0.00
8,300.0	18.23	350.53	7,919.9	2,367.6	-401.4	2,399.8	0.00	0.00	0.00
8,400.0	18.23	350.53	8,014.8	2,398.5	-406.5	2,431.1	0.00	0.00	0.00
8,500.0	18.23	350.53	8,109.8	2,429.4	-411.7	2,462.3	0.00	0.00	0.00
<b>Drop 3° / 100'</b>									
8,586.0	18.23	350.53	8,191.5	2,455.9	-416.1	2,489.2	0.00	0.00	0.00
8,600.0	17.81	350.53	8,204.8	2,460.2	-416.8	2,493.6	3.00	-3.00	0.00
8,700.0	14.81	350.53	8,300.8	2,487.9	-421.5	2,521.6	3.00	-3.00	0.00
8,800.0	11.81	350.53	8,398.1	2,510.6	-425.2	2,544.6	3.00	-3.00	0.00
8,900.0	8.81	350.53	8,496.5	2,528.2	-428.2	2,562.5	3.00	-3.00	0.00
9,000.0	5.81	350.53	8,595.6	2,540.8	-430.3	2,575.2	3.00	-3.00	0.00
9,100.0	2.81	350.53	8,695.3	2,548.2	-431.5	2,582.7	3.00	-3.00	0.00
<b>EOD @ Vertical / Build 1.5° / 100' - Ohio Creek</b>									

<b>Database:</b>	EDM 5000.1 Single User Db	<b>Local Co-ordinate Reference:</b>	Well ELU A18 FED 13C-7 495 - Slot 13C-7
<b>Company:</b>	Caerus Oil & Gas	<b>TVD Reference:</b>	RKB @ 8059.0usft (30')
<b>Project:</b>	Rio Blanco County, CO	<b>MD Reference:</b>	RKB @ 8059.0usft (30')
<b>Site:</b>	ELU A18 495 Pad	<b>North Reference:</b>	True
<b>Well:</b>	ELU A18 FED 13C-7 495	<b>Survey Calculation Method:</b>	Minimum Curvature
<b>Wellbore:</b>	Wellbore #1		
<b>Design:</b>	Design #4		

Planned Survey										
Measured Depth (usft)	Inclination (°)	Azimuth (°)	Vertical Depth (usft)	+N/-S (usft)	+E/-W (usft)	Vertical Section (usft)	Dogleg Rate (°/100usft)	Build Rate (°/100usft)	Turn Rate (°/100usft)	
9,193.7	0.00	0.00	8,789.0	2,550.5	-431.9	2,585.0	3.00	-3.00	0.00	
9,200.0	0.09	240.00	8,795.3	2,550.4	-431.9	2,585.0	1.50	1.50	0.00	
<b>EOB @ 1.24° Inc. / 240.0° Azm</b>										
9,276.4	1.24	240.00	8,871.7	2,550.0	-432.7	2,584.7	1.50	1.50	0.00	
9,300.0	1.24	240.00	8,895.3	2,549.7	-433.1	2,584.6	0.00	0.00	0.00	
9,400.0	1.24	240.00	8,995.3	2,548.7	-435.0	2,583.9	0.00	0.00	0.00	
9,500.0	1.24	240.00	9,095.2	2,547.6	-436.9	2,583.2	0.00	0.00	0.00	
9,600.0	1.24	240.00	9,195.2	2,546.5	-438.7	2,582.5	0.00	0.00	0.00	
9,700.0	1.24	240.00	9,295.2	2,545.4	-440.6	2,581.9	0.00	0.00	0.00	
<b>Williams Fork</b>										
9,791.8	1.24	240.00	9,387.0	2,544.4	-442.3	2,581.2	0.00	0.00	0.00	
9,800.0	1.24	240.00	9,395.2	2,544.3	-442.5	2,581.2	0.00	0.00	0.00	
9,900.0	1.24	240.00	9,495.2	2,543.3	-444.4	2,580.5	0.00	0.00	0.00	
10,000.0	1.24	240.00	9,595.1	2,542.2	-446.2	2,579.8	0.00	0.00	0.00	
10,100.0	1.24	240.00	9,695.1	2,541.1	-448.1	2,579.1	0.00	0.00	0.00	
10,200.0	1.24	240.00	9,795.1	2,540.0	-450.0	2,578.5	0.00	0.00	0.00	
10,300.0	1.24	240.00	9,895.1	2,538.9	-451.9	2,577.8	0.00	0.00	0.00	
10,400.0	1.24	240.00	9,995.0	2,537.8	-453.7	2,577.1	0.00	0.00	0.00	
10,500.0	1.24	240.00	10,095.0	2,536.8	-455.6	2,576.4	0.00	0.00	0.00	
10,600.0	1.24	240.00	10,195.0	2,535.7	-457.5	2,575.7	0.00	0.00	0.00	
10,700.0	1.24	240.00	10,295.0	2,534.6	-459.4	2,575.1	0.00	0.00	0.00	
10,800.0	1.24	240.00	10,394.9	2,533.5	-461.2	2,574.4	0.00	0.00	0.00	
10,900.0	1.24	240.00	10,494.9	2,532.4	-463.1	2,573.7	0.00	0.00	0.00	
11,000.0	1.24	240.00	10,594.9	2,531.3	-465.0	2,573.0	0.00	0.00	0.00	
11,100.0	1.24	240.00	10,694.9	2,530.3	-466.9	2,572.3	0.00	0.00	0.00	
11,200.0	1.24	240.00	10,794.8	2,529.2	-468.8	2,571.7	0.00	0.00	0.00	
11,300.0	1.24	240.00	10,894.8	2,528.1	-470.6	2,571.0	0.00	0.00	0.00	
11,400.0	1.24	240.00	10,994.8	2,527.0	-472.5	2,570.3	0.00	0.00	0.00	
11,500.0	1.24	240.00	11,094.8	2,525.9	-474.4	2,569.6	0.00	0.00	0.00	
11,600.0	1.24	240.00	11,194.8	2,524.8	-476.3	2,569.0	0.00	0.00	0.00	
11,700.0	1.24	240.00	11,294.7	2,523.8	-478.1	2,568.3	0.00	0.00	0.00	
11,800.0	1.24	240.00	11,394.7	2,522.7	-480.0	2,567.6	0.00	0.00	0.00	
11,900.0	1.24	240.00	11,494.7	2,521.6	-481.9	2,566.9	0.00	0.00	0.00	
12,000.0	1.24	240.00	11,594.7	2,520.5	-483.8	2,566.2	0.00	0.00	0.00	
12,100.0	1.24	240.00	11,694.6	2,519.4	-485.6	2,565.6	0.00	0.00	0.00	
12,200.0	1.24	240.00	11,794.6	2,518.3	-487.5	2,564.9	0.00	0.00	0.00	
12,300.0	1.24	240.00	11,894.6	2,517.3	-489.4	2,564.2	0.00	0.00	0.00	
12,400.0	1.24	240.00	11,994.6	2,516.2	-491.3	2,563.5	0.00	0.00	0.00	
12,500.0	1.24	240.00	12,094.5	2,515.1	-493.1	2,562.8	0.00	0.00	0.00	
12,600.0	1.24	240.00	12,194.5	2,514.0	-495.0	2,562.2	0.00	0.00	0.00	
12,700.0	1.24	240.00	12,294.5	2,512.9	-496.9	2,561.5	0.00	0.00	0.00	
12,800.0	1.24	240.00	12,394.5	2,511.9	-498.8	2,560.8	0.00	0.00	0.00	
12,900.0	1.24	240.00	12,494.4	2,510.8	-500.6	2,560.1	0.00	0.00	0.00	
<b>Cameo</b>										
12,922.6	1.24	240.00	12,517.0	2,510.5	-501.1	2,560.0	0.00	0.00	0.00	
13,000.0	1.24	240.00	12,594.4	2,509.7	-502.5	2,559.4	0.00	0.00	0.00	
13,100.0	1.24	240.00	12,694.4	2,508.6	-504.4	2,558.8	0.00	0.00	0.00	
13,200.0	1.24	240.00	12,794.4	2,507.5	-506.3	2,558.1	0.00	0.00	0.00	
13,300.0	1.24	240.00	12,894.4	2,506.4	-508.1	2,557.4	0.00	0.00	0.00	
13,400.0	1.24	240.00	12,994.3	2,505.4	-510.0	2,556.7	0.00	0.00	0.00	
13,500.0	1.24	240.00	13,094.3	2,504.3	-511.9	2,556.0	0.00	0.00	0.00	
<b>Rollins</b>										
13,552.7	1.24	240.00	13,147.0	2,503.7	-512.9	2,555.7	0.00	0.00	0.00	

<b>Database:</b>	EDM 5000.1 Single User Db	<b>Local Co-ordinate Reference:</b>	Well ELU A18 FED 13C-7 495 - Slot 13C-7
<b>Company:</b>	Caerus Oil & Gas	<b>TVD Reference:</b>	RKB @ 8059.0usft (30')
<b>Project:</b>	Rio Blanco County, CO	<b>MD Reference:</b>	RKB @ 8059.0usft (30')
<b>Site:</b>	ELU A18 495 Pad	<b>North Reference:</b>	True
<b>Well:</b>	ELU A18 FED 13C-7 495	<b>Survey Calculation Method:</b>	Minimum Curvature
<b>Wellbore:</b>	Wellbore #1		
<b>Design:</b>	Design #4		

Planned Survey										
Measured Depth (usft)	Inclination (°)	Azimuth (°)	Vertical Depth (usft)	+N/-S (usft)	+E/-W (usft)	Vertical Section (usft)	Dogleg Rate (°/100usft)	Build Rate (°/100usft)	Turn Rate (°/100usft)	
13,600.0	1.24	240.00	13,194.3	2,503.2	-513.8	2,555.4	0.00	0.00	0.00	
13,700.0	1.24	240.00	13,294.3	2,502.1	-515.6	2,554.7	0.00	0.00	0.00	
13,800.0	1.24	240.00	13,394.2	2,501.0	-517.5	2,554.0	0.00	0.00	0.00	
<b>TD @ 13852.8' MD / 13447.0' TVD</b>										
13,852.8	1.24	240.00	13,447.0	2,500.5	-518.5	2,553.6	0.00	0.00	0.00	

Design Targets										
Target Name	Dip Angle (°)	Dip Dir. (°)	TVD (usft)	+N/-S (usft)	+E/-W (usft)	Northing (usft)	Easting (usft)	Latitude	Longitude	
13C-7 - OHCR - hit/miss target - Shape - Point	0.00	0.00	8,789.0	2,550.5	-431.9	14,435,817.97	2,454,348.75	39.716120	-108.105883	
13C-7 - PBHL - plan hits target center - Ellipse (radii L100.0 W50.0 on 240.00 azi)	0.00	0.00	13,447.0	2,500.5	-518.5	14,435,765.20	2,454,263.80	39.715983	-108.106191	

Formations						
Measured Depth (usft)	Vertical Depth (usft)	Name	Lithology	Dip (°)	Dip Direction (°)	
3,644.4	3,498.0	Wasatch				
6,917.8	6,607.0	Wasatch G				
7,233.6	6,907.0	Fort Union				
9,193.7	8,789.0	Ohio Creek				
9,791.8	9,387.0	Williams Fork				
12,922.6	12,517.0	Cameo				
13,552.7	13,147.0	Rollins				

Plan Annotations					
Measured Depth (usft)	Vertical Depth (usft)	+N/-S (usft)	+E/-W (usft)	Comment	
320.0	320.0	0.0	0.0	Build 3° / 100'	
586.7	585.8	17.7	-5.7	EOB @ 8.00° Inc. / 342.00° Azm / Build 3° / 100'	
932.8	922.5	94.2	-22.1	EOB @ 18.23° Inc. / 350.53° Azm	
8,586.0	8,191.5	2,455.9	-416.1	Drop 3° / 100'	
9,193.7	8,789.0	2,550.5	-431.9	EOD @ Vertical / Build 1.5° / 100'	
9,276.4	8,871.7	2,550.0	-432.7	EOB @ 1.24° Inc. / 240.00° Azm	
13,852.8	13,447.0	2,500.5	-518.5	TD @ 13852.8' MD / 13447.0' TVD	