

Project: Rio Blanco County, CO
Site: ELU A18 495 Pad
Well: ELU A18 FED 14B-7 495
Wellbore: Wellbore #1
Design: Design #5
Latitude: 39.709129
Longitude: -108.104378
Ground Level: 8029.0
RKB @ 8059.0usft (30')

PROJECT DETAILS: Rio Blanco County, CO
Geodetic System: Universal Transverse Mercator (US Survey Feet)
Datum: NAD 1927 - Western US
Ellipsoid: Clarke 1866
Zone: Zone 12N (114 W to 108 W)
System Datum: Mean Sea Level

REFERENCE INFORMATION

Vertical (TVD) Reference: RKB @ 8059.0usft (30')
Section (VS) Reference: Slot - 14B-7(0.0N, 0.0E)
Measured Depth Reference: RKB @ 8059.0usft (30')
Calculation Method: Minimum Curvature

SECTION DETAILS

MD	Inc	Azi	TVD	+N/-S	+E/-W	Dleg	TFace	Vsect	Annotation
0.0	0.00	0.00	0.0	0.0	0.0	0.00	0.00	0.0	
220.0	0.00	0.00	220.0	0.0	0.0	0.00	0.00	0.0	Build 3° / 100'
876.8	19.70	46.62	863.9	76.8	81.3	46.62	111.8	0.0	EOB @ 19.70° Inc. / 46.62° Azm
8639.5	19.70	46.62	8172.1	1874.5	1983.6	0.00	2729.0	0.0	Drop 3° / 100'
9296.3	0.00	0.00	8816.0	1951.3	2064.8	3.00	180.00	2840.9	EOD @ Vertical / Build 1.5° / 100'
9379.1	1.24	240.00	8898.8	1950.8	2064.1	1.50	240.00	2840.0	EOB @ 1.24° Inc. / 240.00° Azm
13952.4	1.24	240.00	13471.0	1901.3	1978.2	0.00	0.00	2743.8	TD @ 13952.4' MD / 13471.0' TVD

FORMATION TOP DETAILS

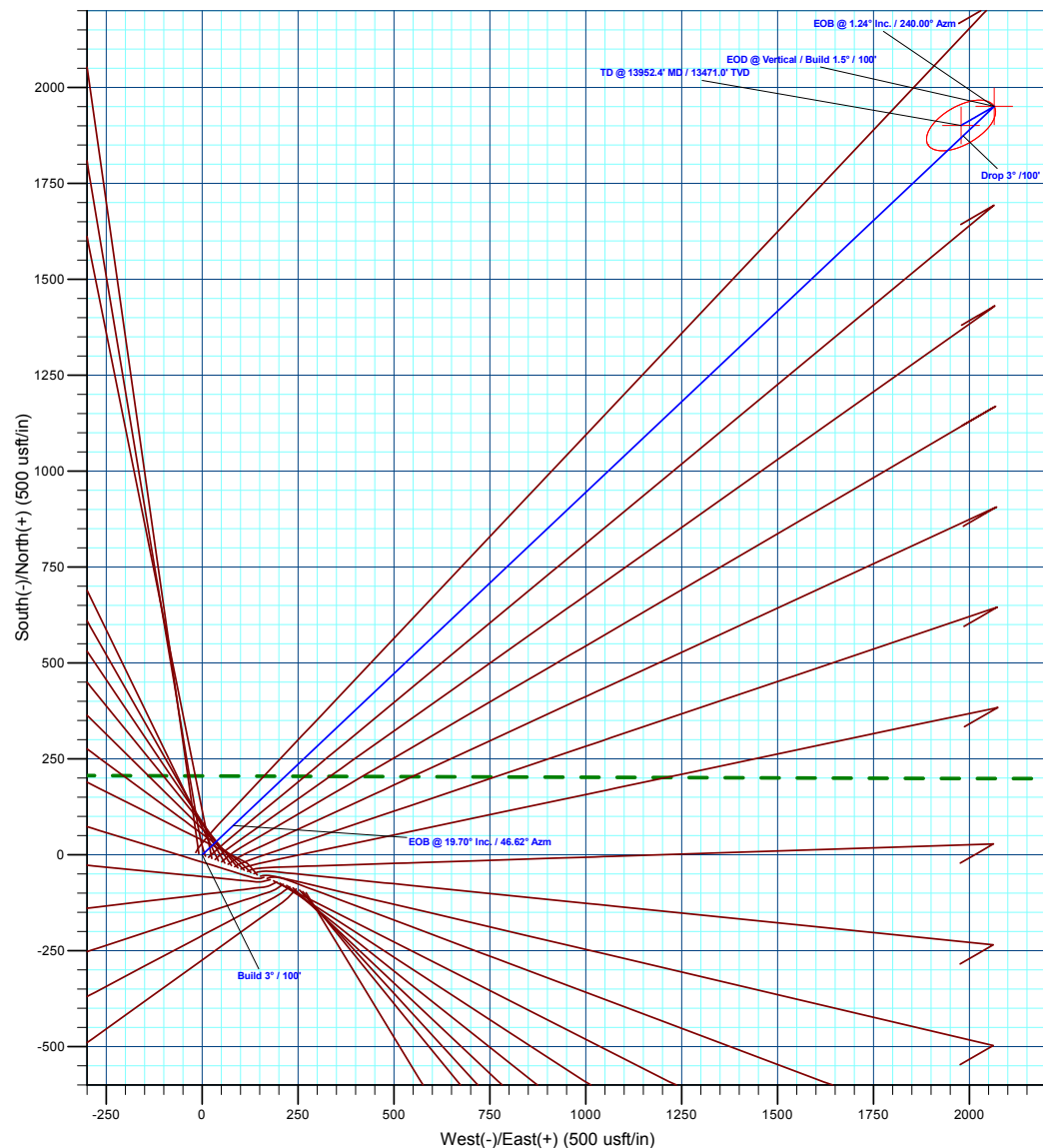
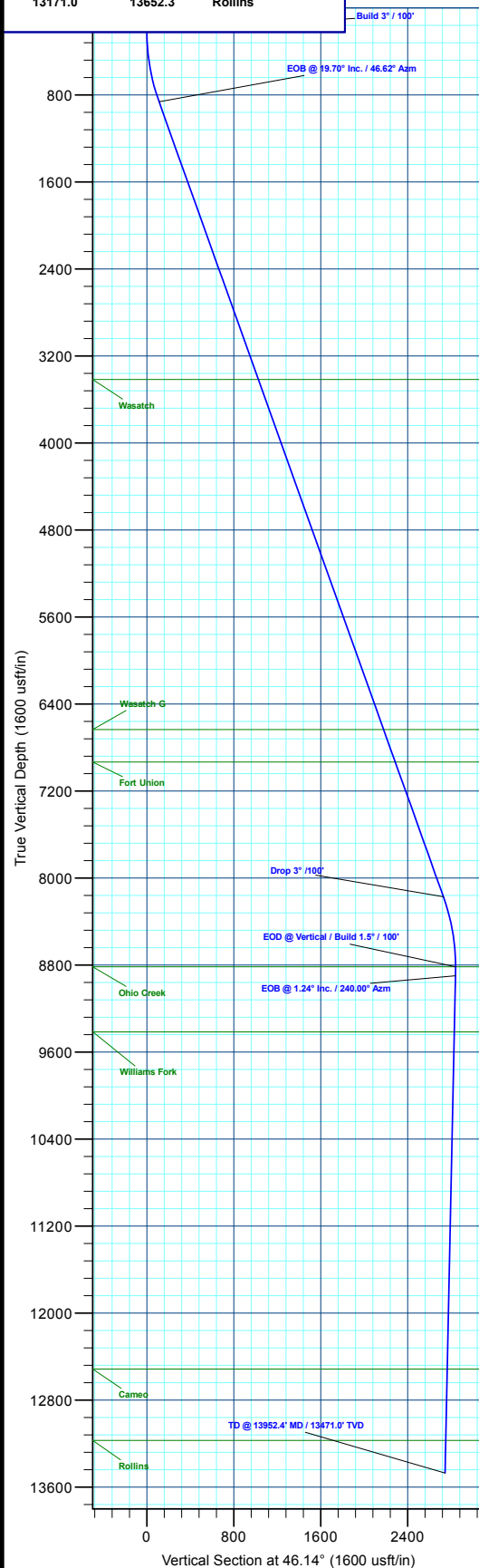
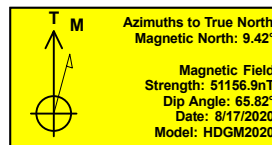
TVDPath	MDPath	Formation
3416.0	3587.6	Wasatch
6634.0	7005.8	Wasatch G
6934.0	7324.4	Fort Union
8816.0	9296.3	Ohio Creek
9415.0	9695.4	Williams Fork
12514.0	12995.1	Cameo
13171.0	13652.3	Rollins

DESIGN TARGET DETAILS

Name	TVD	+N/-S	+E/-W	Northing	Easting	Latitude	Longitude
14B-7 - OHCR	8816.0	1951.3	2064.8	14435302.57	2456854.94	39.714484	-108.097041
14B-7 - PBHL	13471.0	1901.3	1978.2	14435249.80	2456770.00	39.714346	-108.097349

WELL DETAILS: ELU A18 FED 14B-7 495

Ground Level : 8029.0				Latitude	Longitude
+N/-S	+E/-W	Northing	Easting	39.709129	-108.104378
0.0	0.0	14433285.60	2454854.20		14B-7



Plan: Design #5 (ELU A18 FED 14B-7 495/Wellbore #1)

Created By: Will Jircik

Date: 20:14, October 18 2023



Caerus Oil & Gas

Rio Blanco County, CO

ELU A18 495 Pad

ELU A18 FED 14B-7 495 - Slot 14B-7

Wellbore #1

Plan: Design #5

KLX Well Planning Report

18 October, 2023



Database:	EDM 5000.1 Single User Db	Local Co-ordinate Reference:	Well ELU A18 FED 14B-7 495 - Slot 14B-7
Company:	Caerus Oil & Gas	TVD Reference:	RKB @ 8059.0usft (30')
Project:	Rio Blanco County, CO	MD Reference:	RKB @ 8059.0usft (30')
Site:	ELU A18 495 Pad	North Reference:	True
Well:	ELU A18 FED 14B-7 495	Survey Calculation Method:	Minimum Curvature
Wellbore:	Wellbore #1		
Design:	Design #5		

Project	Rio Blanco County, CO		
Map System:	Universal Transverse Mercator (US Survey Feet)	System Datum:	Mean Sea Level
Geo Datum:	NAD 1927 - Western US		
Map Zone:	Zone 12N (114 W to 108 W)		

Site	ELU A18 495 Pad					
Site Position:		Northing:	14,433,279.80 usft	Latitude:	39.709109	
From:	Map	Easting:	2,454,904.40 usft	Longitude:	-108.104201	
Position Uncertainty:		0.0 usft	Slot Radius:	13-3/16 "	Grid Convergence:	1.85 °

Well	ELU A18 FED 14B-7 495 - Slot 14B-7					
Well Position	+N/-S	7.4 usft	Northing:	14,433,285.60 usft	Latitude:	39.709129
	+E/-W	-50.0 usft	Easting:	2,454,854.20 usft	Longitude:	-108.104378
Position Uncertainty	0.0 usft		Wellhead Elevation:		Ground Level:	8,029.0 usft

Wellbore	Wellbore #1				
Magnetics	Model Name	Sample Date	Declination (°)	Dip Angle (°)	Field Strength (nT)
	HDGM2020	8/17/2020	9.42	65.82	51,156.90000000

Design	Design #5			
Audit Notes:				
Version:	Phase:	PLAN	Tie On Depth:	0.0
Vertical Section:	Depth From (TVD) (usft)	+N/-S (usft)	+E/-W (usft)	Direction (°)
	0.0	0.0	0.0	46.14

Plan Sections										
Measured Depth (usft)	Inclination (°)	Azimuth (°)	Vertical Depth (usft)	+N/-S (usft)	+E/-W (usft)	Dogleg Rate (°/100usft)	Build Rate (°/100usft)	Turn Rate (°/100usft)	TFO (°)	Target
0.0	0.00	0.00	0.0	0.0	0.0	0.00	0.00	0.00	0.00	
220.0	0.00	0.00	220.0	0.0	0.0	0.00	0.00	0.00	0.00	
876.8	19.70	46.62	863.9	76.8	81.3	3.00	3.00	0.00	46.62	
8,639.5	19.70	46.62	8,172.1	1,874.5	1,983.6	0.00	0.00	0.00	0.00	
9,296.3	0.00	0.00	8,816.0	1,951.3	2,064.8	3.00	-3.00	0.00	180.00	14B-7 - OHCR
9,379.1	1.24	240.00	8,898.8	1,950.8	2,064.1	1.50	1.50	-144.96	240.00	
13,952.4	1.24	240.00	13,471.0	1,901.3	1,978.2	0.00	0.00	0.00	0.00	14B-7 - PBHL

Database:	EDM 5000.1 Single User Db	Local Co-ordinate Reference:	Well ELU A18 FED 14B-7 495 - Slot 14B-7
Company:	Caerus Oil & Gas	TVD Reference:	RKB @ 8059.0usft (30')
Project:	Rio Blanco County, CO	MD Reference:	RKB @ 8059.0usft (30')
Site:	ELU A18 495 Pad	North Reference:	True
Well:	ELU A18 FED 14B-7 495	Survey Calculation Method:	Minimum Curvature
Wellbore:	Wellbore #1		
Design:	Design #5		

Planned Survey									
Measured Depth (usft)	Inclination (°)	Azimuth (°)	Vertical Depth (usft)	+N/-S (usft)	+E/-W (usft)	Vertical Section (usft)	Dogleg Rate (°/100usft)	Build Rate (°/100usft)	Turn Rate (°/100usft)
0.0	0.00	0.00	0.0	0.0	0.0	0.0	0.00	0.00	0.00
100.0	0.00	0.00	100.0	0.0	0.0	0.0	0.00	0.00	0.00
200.0	0.00	0.00	200.0	0.0	0.0	0.0	0.00	0.00	0.00
Build 3° / 100'									
220.0	0.00	0.00	220.0	0.0	0.0	0.0	0.00	0.00	0.00
300.0	2.40	46.62	300.0	1.2	1.2	1.7	3.00	3.00	0.00
400.0	5.40	46.62	399.7	5.8	6.2	8.5	3.00	3.00	0.00
500.0	8.40	46.62	499.0	14.1	14.9	20.5	3.00	3.00	0.00
600.0	11.40	46.62	597.5	25.9	27.4	37.7	3.00	3.00	0.00
700.0	14.40	46.62	695.0	41.2	43.6	60.0	3.00	3.00	0.00
800.0	17.40	46.62	791.1	60.0	63.5	87.4	3.00	3.00	0.00
EOB @ 19.70° Inc. / 46.62° Azm									
876.8	19.70	46.62	863.9	76.8	81.3	111.8	3.00	3.00	0.00
900.0	19.70	46.62	885.8	82.2	87.0	119.6	0.00	0.00	0.00
1,000.0	19.70	46.62	979.9	105.3	111.5	153.4	0.00	0.00	0.00
1,100.0	19.70	46.62	1,074.1	128.5	136.0	187.1	0.00	0.00	0.00
1,200.0	19.70	46.62	1,168.2	151.7	160.5	220.8	0.00	0.00	0.00
1,300.0	19.70	46.62	1,262.3	174.8	185.0	254.5	0.00	0.00	0.00
1,400.0	19.70	46.62	1,356.5	198.0	209.5	288.2	0.00	0.00	0.00
1,500.0	19.70	46.62	1,450.6	221.1	234.0	321.9	0.00	0.00	0.00
1,600.0	19.70	46.62	1,544.8	244.3	258.5	355.7	0.00	0.00	0.00
1,700.0	19.70	46.62	1,638.9	267.4	283.0	389.4	0.00	0.00	0.00
1,800.0	19.70	46.62	1,733.1	290.6	307.5	423.1	0.00	0.00	0.00
1,900.0	19.70	46.62	1,827.2	313.8	332.0	456.8	0.00	0.00	0.00
2,000.0	19.70	46.62	1,921.4	336.9	356.5	490.5	0.00	0.00	0.00
2,100.0	19.70	46.62	2,015.5	360.1	381.0	524.2	0.00	0.00	0.00
2,200.0	19.70	46.62	2,109.6	383.2	405.5	557.9	0.00	0.00	0.00
2,300.0	19.70	46.62	2,203.8	406.4	430.0	591.7	0.00	0.00	0.00
2,400.0	19.70	46.62	2,297.9	429.5	454.5	625.4	0.00	0.00	0.00
2,500.0	19.70	46.62	2,392.1	452.7	479.1	659.1	0.00	0.00	0.00
2,600.0	19.70	46.62	2,486.2	475.9	503.6	692.8	0.00	0.00	0.00
2,700.0	19.70	46.62	2,580.4	499.0	528.1	726.5	0.00	0.00	0.00
2,800.0	19.70	46.62	2,674.5	522.2	552.6	760.2	0.00	0.00	0.00
2,900.0	19.70	46.62	2,768.7	545.3	577.1	794.0	0.00	0.00	0.00
3,000.0	19.70	46.62	2,862.8	568.5	601.6	827.7	0.00	0.00	0.00
3,100.0	19.70	46.62	2,957.0	591.7	626.1	861.4	0.00	0.00	0.00
3,200.0	19.70	46.62	3,051.1	614.8	650.6	895.1	0.00	0.00	0.00
3,300.0	19.70	46.62	3,145.2	638.0	675.1	928.8	0.00	0.00	0.00
3,400.0	19.70	46.62	3,239.4	661.1	699.6	962.5	0.00	0.00	0.00
3,500.0	19.70	46.62	3,333.5	684.3	724.1	996.2	0.00	0.00	0.00
Wasatch									
3,587.6	19.70	46.62	3,416.0	704.6	745.6	1,025.8	0.00	0.00	0.00
3,600.0	19.70	46.62	3,427.7	707.4	748.6	1,030.0	0.00	0.00	0.00
3,700.0	19.70	46.62	3,521.8	730.6	773.1	1,063.7	0.00	0.00	0.00
3,800.0	19.70	46.62	3,616.0	753.8	797.6	1,097.4	0.00	0.00	0.00
3,900.0	19.70	46.62	3,710.1	776.9	822.1	1,131.1	0.00	0.00	0.00
4,000.0	19.70	46.62	3,804.3	800.1	846.6	1,164.8	0.00	0.00	0.00
4,100.0	19.70	46.62	3,898.4	823.2	871.1	1,198.5	0.00	0.00	0.00
4,200.0	19.70	46.62	3,992.5	846.4	895.6	1,232.3	0.00	0.00	0.00
4,300.0	19.70	46.62	4,086.7	869.5	920.2	1,266.0	0.00	0.00	0.00
4,400.0	19.70	46.62	4,180.8	892.7	944.7	1,299.7	0.00	0.00	0.00
4,500.0	19.70	46.62	4,275.0	915.9	969.2	1,333.4	0.00	0.00	0.00
4,600.0	19.70	46.62	4,369.1	939.0	993.7	1,367.1	0.00	0.00	0.00

Database:	EDM 5000.1 Single User Db	Local Co-ordinate Reference:	Well ELU A18 FED 14B-7 495 - Slot 14B-7
Company:	Caerus Oil & Gas	TVD Reference:	RKB @ 8059.0usft (30')
Project:	Rio Blanco County, CO	MD Reference:	RKB @ 8059.0usft (30')
Site:	ELU A18 495 Pad	North Reference:	True
Well:	ELU A18 FED 14B-7 495	Survey Calculation Method:	Minimum Curvature
Wellbore:	Wellbore #1		
Design:	Design #5		

Planned Survey									
Measured Depth (usft)	Inclination (°)	Azimuth (°)	Vertical Depth (usft)	+N/-S (usft)	+E/-W (usft)	Vertical Section (usft)	Dogleg Rate (°/100usft)	Build Rate (°/100usft)	Turn Rate (°/100usft)
4,700.0	19.70	46.62	4,463.3	962.2	1,018.2	1,400.8	0.00	0.00	0.00
4,800.0	19.70	46.62	4,557.4	985.3	1,042.7	1,434.5	0.00	0.00	0.00
4,900.0	19.70	46.62	4,651.6	1,008.5	1,067.2	1,468.3	0.00	0.00	0.00
5,000.0	19.70	46.62	4,745.7	1,031.7	1,091.7	1,502.0	0.00	0.00	0.00
5,100.0	19.70	46.62	4,839.8	1,054.8	1,116.2	1,535.7	0.00	0.00	0.00
5,200.0	19.70	46.62	4,934.0	1,078.0	1,140.7	1,569.4	0.00	0.00	0.00
5,300.0	19.70	46.62	5,028.1	1,101.1	1,165.2	1,603.1	0.00	0.00	0.00
5,400.0	19.70	46.62	5,122.3	1,124.3	1,189.7	1,636.8	0.00	0.00	0.00
5,500.0	19.70	46.62	5,216.4	1,147.4	1,214.2	1,670.6	0.00	0.00	0.00
5,600.0	19.70	46.62	5,310.6	1,170.6	1,238.7	1,704.3	0.00	0.00	0.00
5,700.0	19.70	46.62	5,404.7	1,193.8	1,263.2	1,738.0	0.00	0.00	0.00
5,800.0	19.70	46.62	5,498.9	1,216.9	1,287.7	1,771.7	0.00	0.00	0.00
5,900.0	19.70	46.62	5,593.0	1,240.1	1,312.2	1,805.4	0.00	0.00	0.00
6,000.0	19.70	46.62	5,687.1	1,263.2	1,336.7	1,839.1	0.00	0.00	0.00
6,100.0	19.70	46.62	5,781.3	1,286.4	1,361.3	1,872.9	0.00	0.00	0.00
6,200.0	19.70	46.62	5,875.4	1,309.5	1,385.8	1,906.6	0.00	0.00	0.00
6,300.0	19.70	46.62	5,969.6	1,332.7	1,410.3	1,940.3	0.00	0.00	0.00
6,400.0	19.70	46.62	6,063.7	1,355.9	1,434.8	1,974.0	0.00	0.00	0.00
6,500.0	19.70	46.62	6,157.9	1,379.0	1,459.3	2,007.7	0.00	0.00	0.00
6,600.0	19.70	46.62	6,252.0	1,402.2	1,483.8	2,041.4	0.00	0.00	0.00
6,700.0	19.70	46.62	6,346.2	1,425.3	1,508.3	2,075.1	0.00	0.00	0.00
6,800.0	19.70	46.62	6,440.3	1,448.5	1,532.8	2,108.9	0.00	0.00	0.00
6,900.0	19.70	46.62	6,534.4	1,471.7	1,557.3	2,142.6	0.00	0.00	0.00
7,000.0	19.70	46.62	6,628.6	1,494.8	1,581.8	2,176.3	0.00	0.00	0.00
Wasatch G									
7,005.8	19.70	46.62	6,634.0	1,496.1	1,583.2	2,178.2	0.00	0.00	0.00
7,100.0	19.70	46.62	6,722.7	1,518.0	1,606.3	2,210.0	0.00	0.00	0.00
7,200.0	19.70	46.62	6,816.9	1,541.1	1,630.8	2,243.7	0.00	0.00	0.00
7,300.0	19.70	46.62	6,911.0	1,564.3	1,655.3	2,277.4	0.00	0.00	0.00
Fort Union									
7,324.4	19.70	46.62	6,934.0	1,569.9	1,661.3	2,285.7	0.00	0.00	0.00
7,400.0	19.70	46.62	7,005.2	1,587.4	1,679.8	2,311.2	0.00	0.00	0.00
7,500.0	19.70	46.62	7,099.3	1,610.6	1,704.3	2,344.9	0.00	0.00	0.00
7,600.0	19.70	46.62	7,193.5	1,633.8	1,728.8	2,378.6	0.00	0.00	0.00
7,700.0	19.70	46.62	7,287.6	1,656.9	1,753.3	2,412.3	0.00	0.00	0.00
7,800.0	19.70	46.62	7,381.7	1,680.1	1,777.9	2,446.0	0.00	0.00	0.00
7,900.0	19.70	46.62	7,475.9	1,703.2	1,802.4	2,479.7	0.00	0.00	0.00
8,000.0	19.70	46.62	7,570.0	1,726.4	1,826.9	2,513.4	0.00	0.00	0.00
8,100.0	19.70	46.62	7,664.2	1,749.6	1,851.4	2,547.2	0.00	0.00	0.00
8,200.0	19.70	46.62	7,758.3	1,772.7	1,875.9	2,580.9	0.00	0.00	0.00
8,300.0	19.70	46.62	7,852.5	1,795.9	1,900.4	2,614.6	0.00	0.00	0.00
8,400.0	19.70	46.62	7,946.6	1,819.0	1,924.9	2,648.3	0.00	0.00	0.00
8,500.0	19.70	46.62	8,040.8	1,842.2	1,949.4	2,682.0	0.00	0.00	0.00
8,600.0	19.70	46.62	8,134.9	1,865.3	1,973.9	2,715.7	0.00	0.00	0.00
Drop 3° /100'									
8,639.5	19.70	46.62	8,172.1	1,874.5	1,983.6	2,729.0	0.00	0.00	0.00
8,700.0	17.89	46.62	8,229.4	1,887.9	1,997.7	2,748.5	3.00	-3.00	0.00
8,800.0	14.89	46.62	8,325.3	1,907.3	2,018.2	2,776.8	3.00	-3.00	0.00
8,900.0	11.89	46.62	8,422.6	1,923.2	2,035.1	2,799.9	3.00	-3.00	0.00
9,000.0	8.89	46.62	8,520.9	1,935.5	2,048.2	2,817.9	3.00	-3.00	0.00
9,100.0	5.89	46.62	8,620.1	1,944.4	2,057.5	2,830.8	3.00	-3.00	0.00
9,200.0	2.89	46.62	8,719.8	1,949.6	2,063.1	2,838.4	3.00	-3.00	0.00
EOD @ Vertical / Build 1.5° / 100' - Ohio Creek									
9,296.3	0.00	0.00	8,816.0	1,951.3	2,064.8	2,840.9	3.00	-3.00	0.00

Database:	EDM 5000.1 Single User Db	Local Co-ordinate Reference:	Well ELU A18 FED 14B-7 495 - Slot 14B-7
Company:	Caerus Oil & Gas	TVD Reference:	RKB @ 8059.0usft (30')
Project:	Rio Blanco County, CO	MD Reference:	RKB @ 8059.0usft (30')
Site:	ELU A18 495 Pad	North Reference:	True
Well:	ELU A18 FED 14B-7 495	Survey Calculation Method:	Minimum Curvature
Wellbore:	Wellbore #1		
Design:	Design #5		

Planned Survey									
Measured Depth (usft)	Inclination (°)	Azimuth (°)	Vertical Depth (usft)	+N/-S (usft)	+E/-W (usft)	Vertical Section (usft)	Dogleg Rate (°/100usft)	Build Rate (°/100usft)	Turn Rate (°/100usft)
9,300.0	0.06	240.00	8,819.7	1,951.3	2,064.8	2,840.9	1.50	1.50	0.00
EOB @ 1.24° Inc. / 240.00° Azm									
9,379.1	1.24	240.00	8,898.8	1,950.8	2,064.1	2,840.0	1.50	1.50	0.00
9,400.0	1.24	240.00	8,919.7	1,950.6	2,063.7	2,839.6	0.00	0.00	0.00
9,500.0	1.24	240.00	9,019.7	1,949.5	2,061.8	2,837.5	0.00	0.00	0.00
9,600.0	1.24	240.00	9,119.7	1,948.4	2,059.9	2,835.4	0.00	0.00	0.00
9,700.0	1.24	240.00	9,219.6	1,947.4	2,058.0	2,833.3	0.00	0.00	0.00
9,800.0	1.24	240.00	9,319.6	1,946.3	2,056.2	2,831.1	0.00	0.00	0.00
Williams Fork									
9,895.4	1.24	240.00	9,415.0	1,945.2	2,054.4	2,829.1	0.00	0.00	0.00
9,900.0	1.24	240.00	9,419.6	1,945.2	2,054.3	2,829.0	0.00	0.00	0.00
10,000.0	1.24	240.00	9,519.6	1,944.1	2,052.4	2,826.9	0.00	0.00	0.00
10,100.0	1.24	240.00	9,619.5	1,943.0	2,050.5	2,824.8	0.00	0.00	0.00
10,200.0	1.24	240.00	9,719.5	1,941.9	2,048.7	2,822.7	0.00	0.00	0.00
10,300.0	1.24	240.00	9,819.5	1,940.9	2,046.8	2,820.6	0.00	0.00	0.00
10,400.0	1.24	240.00	9,919.5	1,939.8	2,044.9	2,818.5	0.00	0.00	0.00
10,500.0	1.24	240.00	10,019.4	1,938.7	2,043.0	2,816.4	0.00	0.00	0.00
10,600.0	1.24	240.00	10,119.4	1,937.6	2,041.2	2,814.3	0.00	0.00	0.00
10,700.0	1.24	240.00	10,219.4	1,936.5	2,039.3	2,812.2	0.00	0.00	0.00
10,800.0	1.24	240.00	10,319.4	1,935.4	2,037.4	2,810.1	0.00	0.00	0.00
10,900.0	1.24	240.00	10,419.4	1,934.4	2,035.5	2,808.0	0.00	0.00	0.00
11,000.0	1.24	240.00	10,519.3	1,933.3	2,033.7	2,805.9	0.00	0.00	0.00
11,100.0	1.24	240.00	10,619.3	1,932.2	2,031.8	2,803.8	0.00	0.00	0.00
11,200.0	1.24	240.00	10,719.3	1,931.1	2,029.9	2,801.7	0.00	0.00	0.00
11,300.0	1.24	240.00	10,819.3	1,930.0	2,028.0	2,799.6	0.00	0.00	0.00
11,400.0	1.24	240.00	10,919.2	1,928.9	2,026.1	2,797.5	0.00	0.00	0.00
11,500.0	1.24	240.00	11,019.2	1,927.9	2,024.3	2,795.4	0.00	0.00	0.00
11,600.0	1.24	240.00	11,119.2	1,926.8	2,022.4	2,793.3	0.00	0.00	0.00
11,700.0	1.24	240.00	11,219.2	1,925.7	2,020.5	2,791.2	0.00	0.00	0.00
11,800.0	1.24	240.00	11,319.1	1,924.6	2,018.6	2,789.1	0.00	0.00	0.00
11,900.0	1.24	240.00	11,419.1	1,923.5	2,016.8	2,787.0	0.00	0.00	0.00
12,000.0	1.24	240.00	11,519.1	1,922.4	2,014.9	2,784.9	0.00	0.00	0.00
12,100.0	1.24	240.00	11,619.1	1,921.4	2,013.0	2,782.8	0.00	0.00	0.00
12,200.0	1.24	240.00	11,719.0	1,920.3	2,011.1	2,780.7	0.00	0.00	0.00
12,300.0	1.24	240.00	11,819.0	1,919.2	2,009.3	2,778.6	0.00	0.00	0.00
12,400.0	1.24	240.00	11,919.0	1,918.1	2,007.4	2,776.4	0.00	0.00	0.00
12,500.0	1.24	240.00	12,019.0	1,917.0	2,005.5	2,774.3	0.00	0.00	0.00
12,600.0	1.24	240.00	12,119.0	1,915.9	2,003.6	2,772.2	0.00	0.00	0.00
12,700.0	1.24	240.00	12,218.9	1,914.9	2,001.7	2,770.1	0.00	0.00	0.00
12,800.0	1.24	240.00	12,318.9	1,913.8	1,999.9	2,768.0	0.00	0.00	0.00
12,900.0	1.24	240.00	12,418.9	1,912.7	1,998.0	2,765.9	0.00	0.00	0.00
Cameo									
12,995.1	1.24	240.00	12,514.0	1,911.7	1,996.2	2,763.9	0.00	0.00	0.00
13,000.0	1.24	240.00	12,518.9	1,911.6	1,996.1	2,763.8	0.00	0.00	0.00
13,100.0	1.24	240.00	12,618.8	1,910.5	1,994.2	2,761.7	0.00	0.00	0.00
13,200.0	1.24	240.00	12,718.8	1,909.4	1,992.4	2,759.6	0.00	0.00	0.00
13,300.0	1.24	240.00	12,818.8	1,908.4	1,990.5	2,757.5	0.00	0.00	0.00
13,400.0	1.24	240.00	12,918.8	1,907.3	1,988.6	2,755.4	0.00	0.00	0.00
13,500.0	1.24	240.00	13,018.7	1,906.2	1,986.7	2,753.3	0.00	0.00	0.00
13,600.0	1.24	240.00	13,118.7	1,905.1	1,984.9	2,751.2	0.00	0.00	0.00
Rollins									
13,652.3	1.24	240.00	13,171.0	1,904.5	1,983.9	2,750.1	0.00	0.00	0.00
13,700.0	1.24	240.00	13,218.7	1,904.0	1,983.0	2,749.1	0.00	0.00	0.00

Database:	EDM 5000.1 Single User Db	Local Co-ordinate Reference:	Well ELU A18 FED 14B-7 495 - Slot 14B-7
Company:	Caerus Oil & Gas	TVD Reference:	RKB @ 8059.0usft (30')
Project:	Rio Blanco County, CO	MD Reference:	RKB @ 8059.0usft (30')
Site:	ELU A18 495 Pad	North Reference:	True
Well:	ELU A18 FED 14B-7 495	Survey Calculation Method:	Minimum Curvature
Wellbore:	Wellbore #1		
Design:	Design #5		

Planned Survey									
Measured Depth (usft)	Inclination (°)	Azimuth (°)	Vertical Depth (usft)	+N/-S (usft)	+E/-W (usft)	Vertical Section (usft)	Dogleg Rate (°/100usft)	Build Rate (°/100usft)	Turn Rate (°/100usft)
13,800.0	1.24	240.00	13,318.7	1,902.9	1,981.1	2,747.0	0.00	0.00	0.00
13,900.0	1.24	240.00	13,418.6	1,901.9	1,979.2	2,744.9	0.00	0.00	0.00
TD @ 13952.4' MD / 13471.0' TVD									
13,952.4	1.24	240.00	13,471.0	1,901.3	1,978.2	2,743.8	0.00	0.00	0.00

Design Targets									
Target Name	Dip Angle (°)	Dip Dir. (°)	TVD (usft)	+N/-S (usft)	+E/-W (usft)	Northing (usft)	Easting (usft)	Latitude	Longitude
14B-7 - OHCR - hit/miss target - Shape	0.00	0.00	8,816.0	1,951.3	2,064.8	14,435,302.57	2,456,854.95	39.714484	-108.097042
14B-7 - PBHL - plan hits target center - Ellipse (radii L100.0 W50.0 on 240.00 azi)	0.00	0.00	13,471.0	1,901.3	1,978.2	14,435,249.80	2,456,770.00	39.714346	-108.097349

Formations						
Measured Depth (usft)	Vertical Depth (usft)	Name	Lithology	Dip (°)	Dip Direction (°)	
3,587.6	3,416.0	Wasatch				
7,005.8	6,634.0	Wasatch G				
7,324.4	6,934.0	Fort Union				
9,296.3	8,816.0	Ohio Creek				
9,895.4	9,415.0	Williams Fork				
12,995.1	12,514.0	Cameo				
13,652.3	13,171.0	Rollins				

Plan Annotations				
Measured Depth (usft)	Vertical Depth (usft)	+N/-S (usft)	+E/-W (usft)	Comment
220.0	220.0	0.0	0.0	Build 3° / 100'
876.8	863.9	76.8	81.3	EOB @ 19.70° Inc. / 46.62° Azm
8,639.5	8,172.1	1,874.5	1,983.6	Drop 3° / 100'
9,296.3	8,816.0	1,951.3	2,064.8	EOD @ Vertical / Build 1.5° / 100'
9,379.1	8,898.8	1,950.8	2,064.1	EOB @ 1.24° Inc. / 240.00° Azm
13,952.4	13,471.0	1,901.3	1,978.2	TD @ 13952.4' MD / 13471.0' TVD