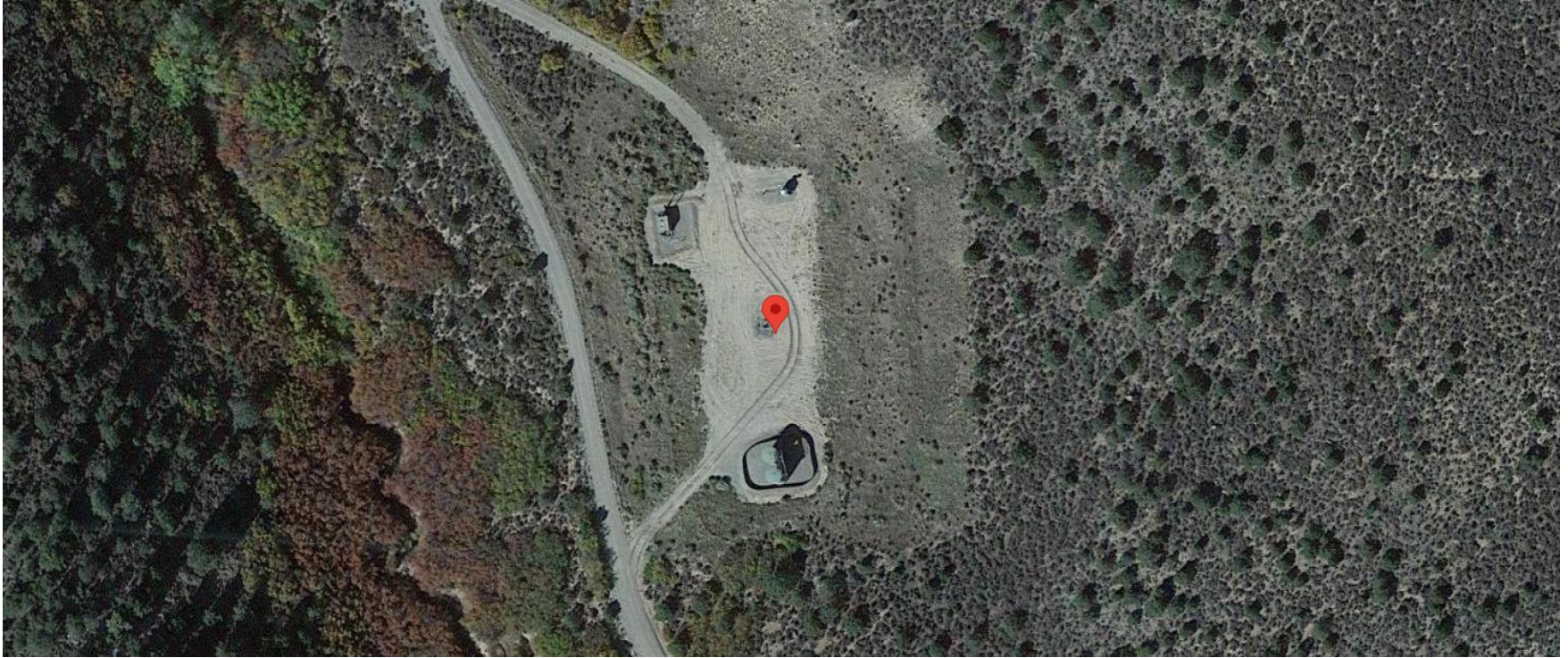


**Storm Water Management and Erosion control**  
**Location Name: CAERUS PICEANCE LLC SAVAGE 1-24 (RH1) Pad**  
**Location #: 323983**



**Location Overview: Location is within High Priority/Black Bear/NSO Habitat areas & in close proximity to Density Habitat area. Location is approximately 276 yards from Beaver Creek. Location is within Rule 411a Surface Water Internal Buffer.**

**Section/Township/Range: 1 7S94W**



**Storm water Management and Erosion control**  
**Location Name: CAERUS PICEANCE LLC SAVAGE 1-24 (RH1) Pad**  
**Location #: 323983**



**North West corner of location.**



**North East corner of location.**



**South West corner of location.**



**South East corner of location.**