

Aristocrat 31-10C

NWSE Sec. 10-T3N-R65W

API #: 123-245087

Remediation Project #: 29856

Form 19 Data Package

October 2023

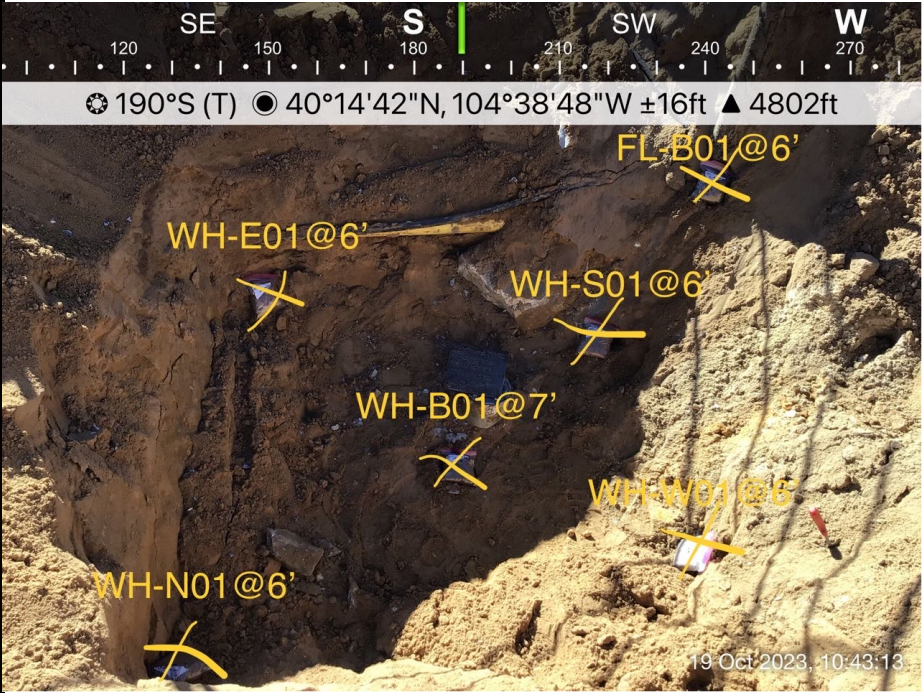
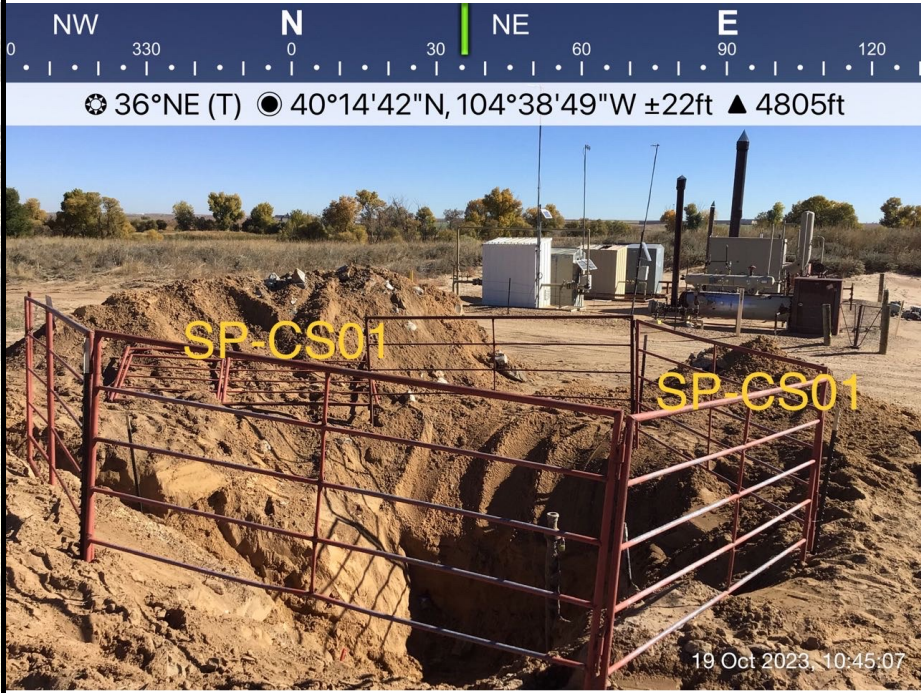
Prepared by Tasman, Inc.



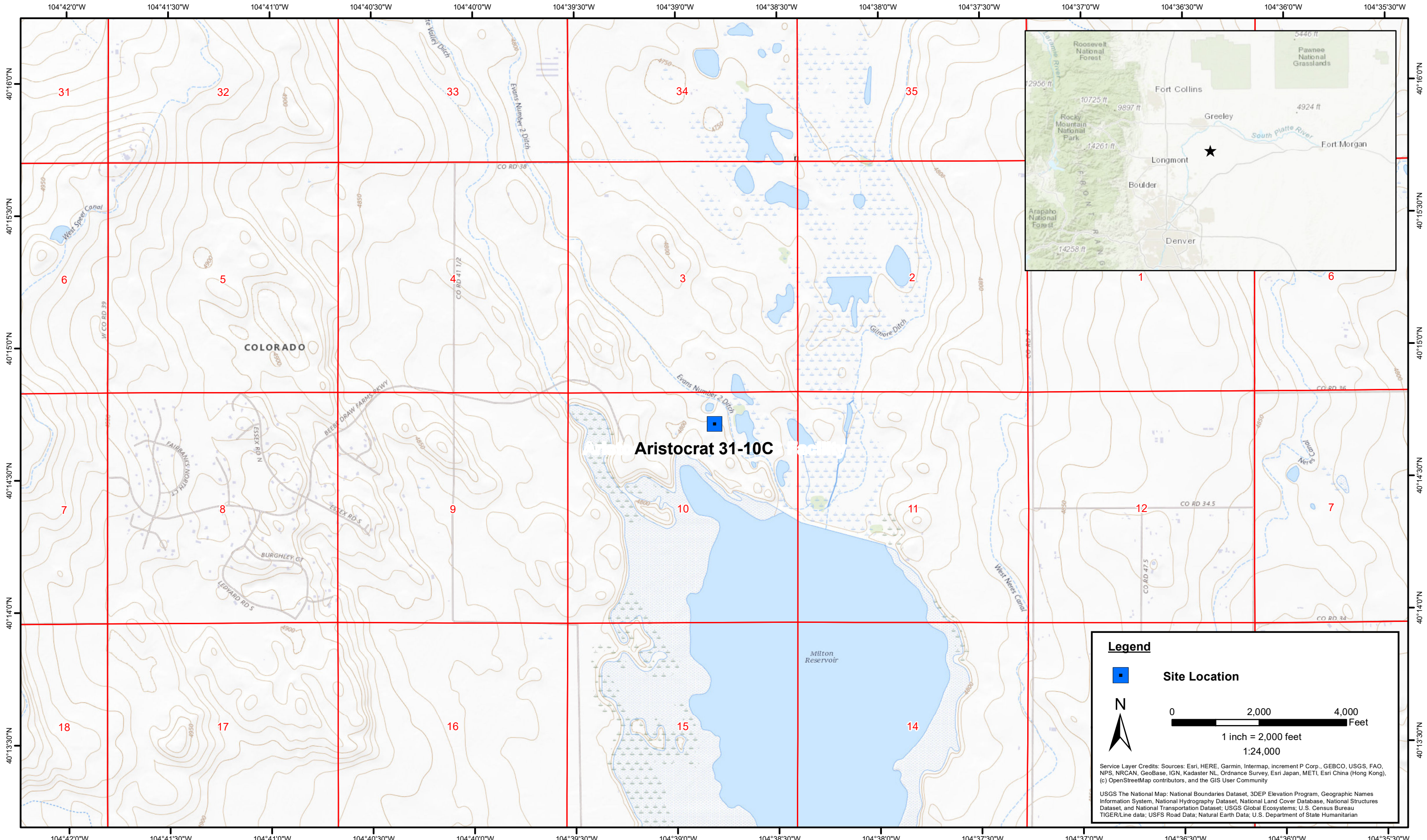
On behalf of Crestone Peak Resources Operating, LLC



FIELD NOTES AND PHOTO LOG

					
Equipment ID:	Equipment Type:	Equipment ID:	Equipment Type:		
Material:	Volume:	Contents:	Material:	Volume:	Contents:
Notes/Conditions: Soil Sampling and Screening Locations Facing South			Notes/Conditions: Stockpile soil sampling and screening locations facing Northeast.		

FIGURES



DATE: October 2023
 DESIGNED BY: S. Vogt
 DRAWN BY: L. Reed

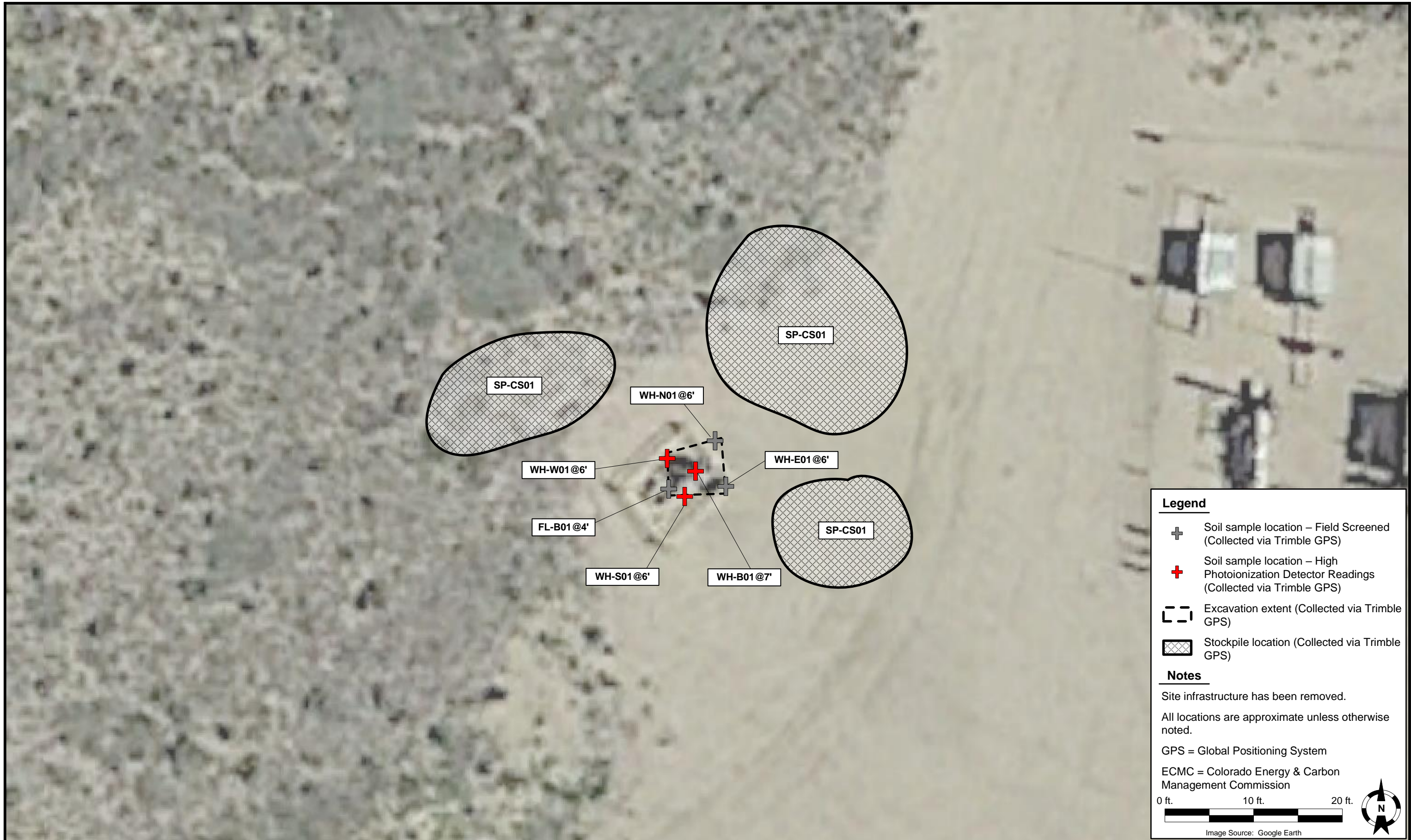


Tasman, Inc.
 6855 W. 119th Ave
 Broomfield, CO 80020

Crestone Peak Resources Operating, LLC
Aristocrat 31-10C
 NWSE Sec. 10-T3N-R65W
 Weld County, Colorado

Site Location Map

Figure
1



DATE: October 19, 2023

DESIGNED BY: S. Vogt

DRAWN BY: B. LeVasseur



Tasman, Inc.
6855 W119th Ave.
Broomfield, CO 80020

Crestone Peak Resources Operating, LLC
Aristocrat 31-10C
NWNE Sec. 10-T3N-R65W
Weld County, Colorado

Soil Sample Location Map

Figure 2