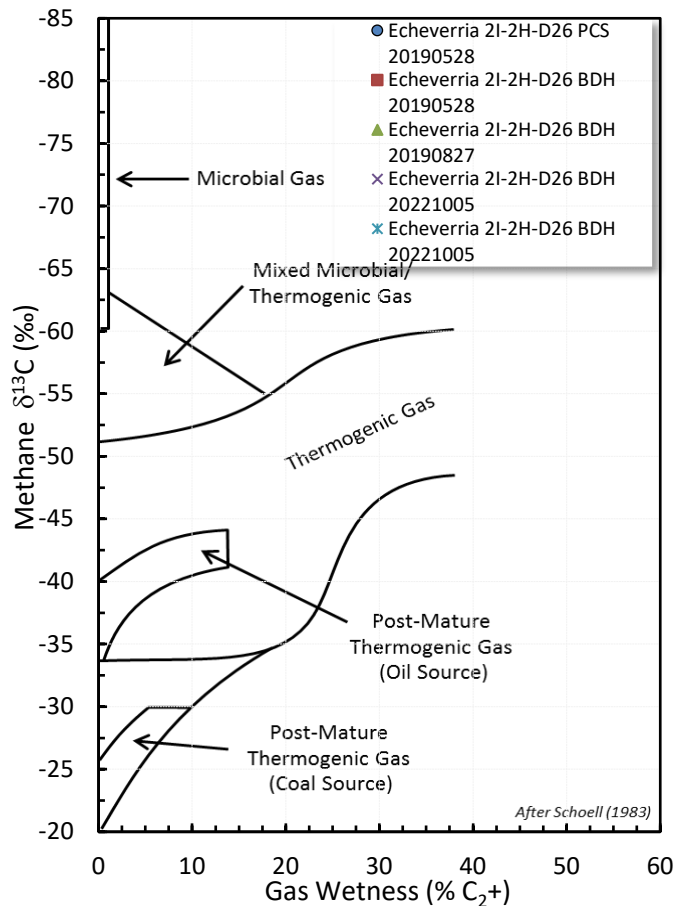
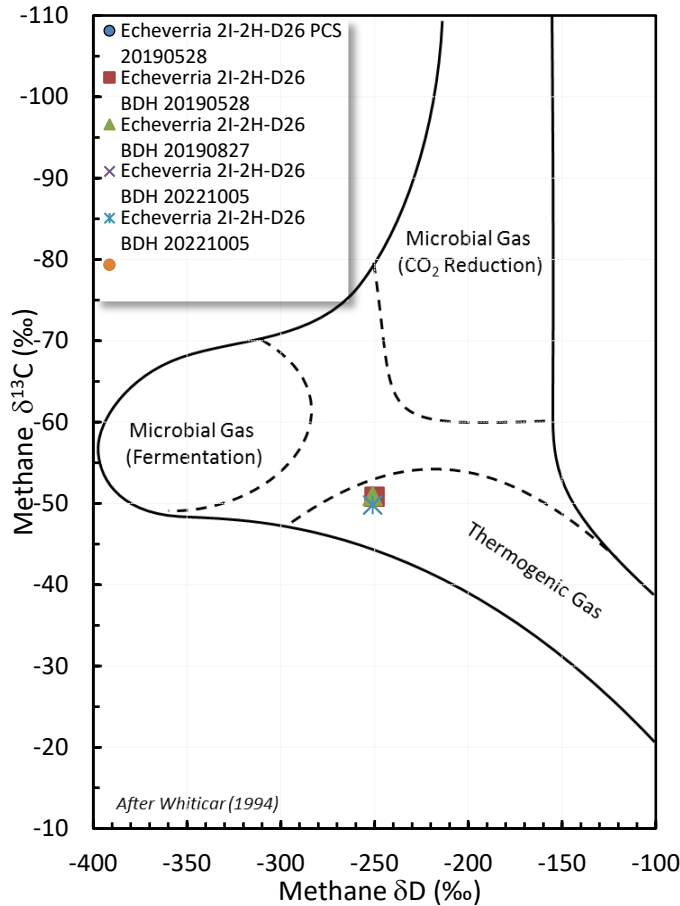


# Stable Isotope Interpretive Plots

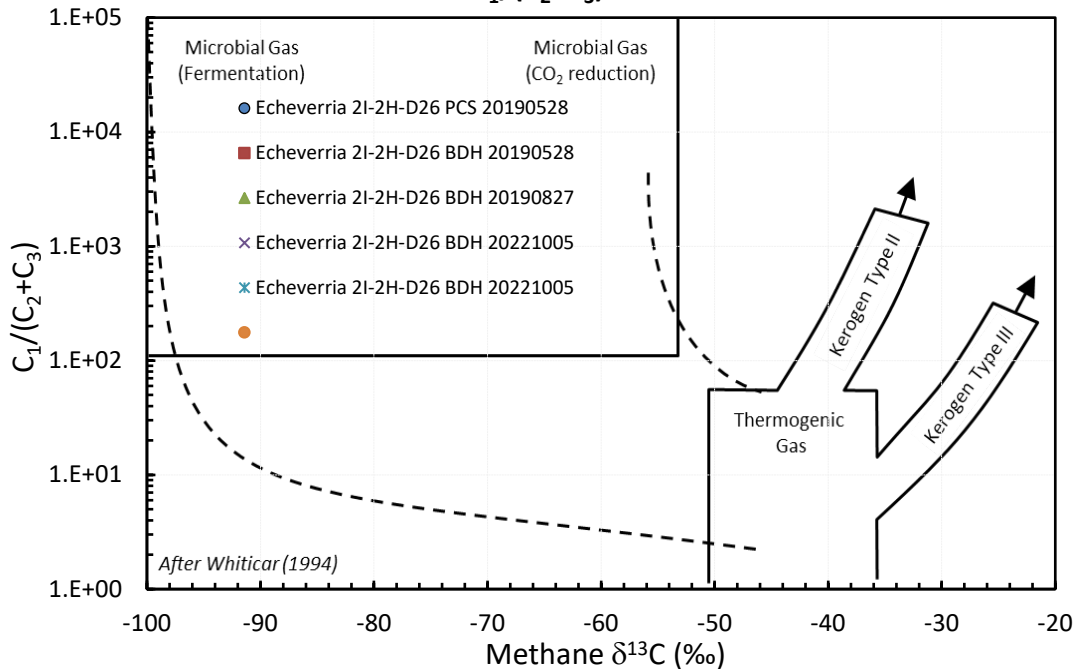
### Methane vs Gas Wetness Genetic Classification



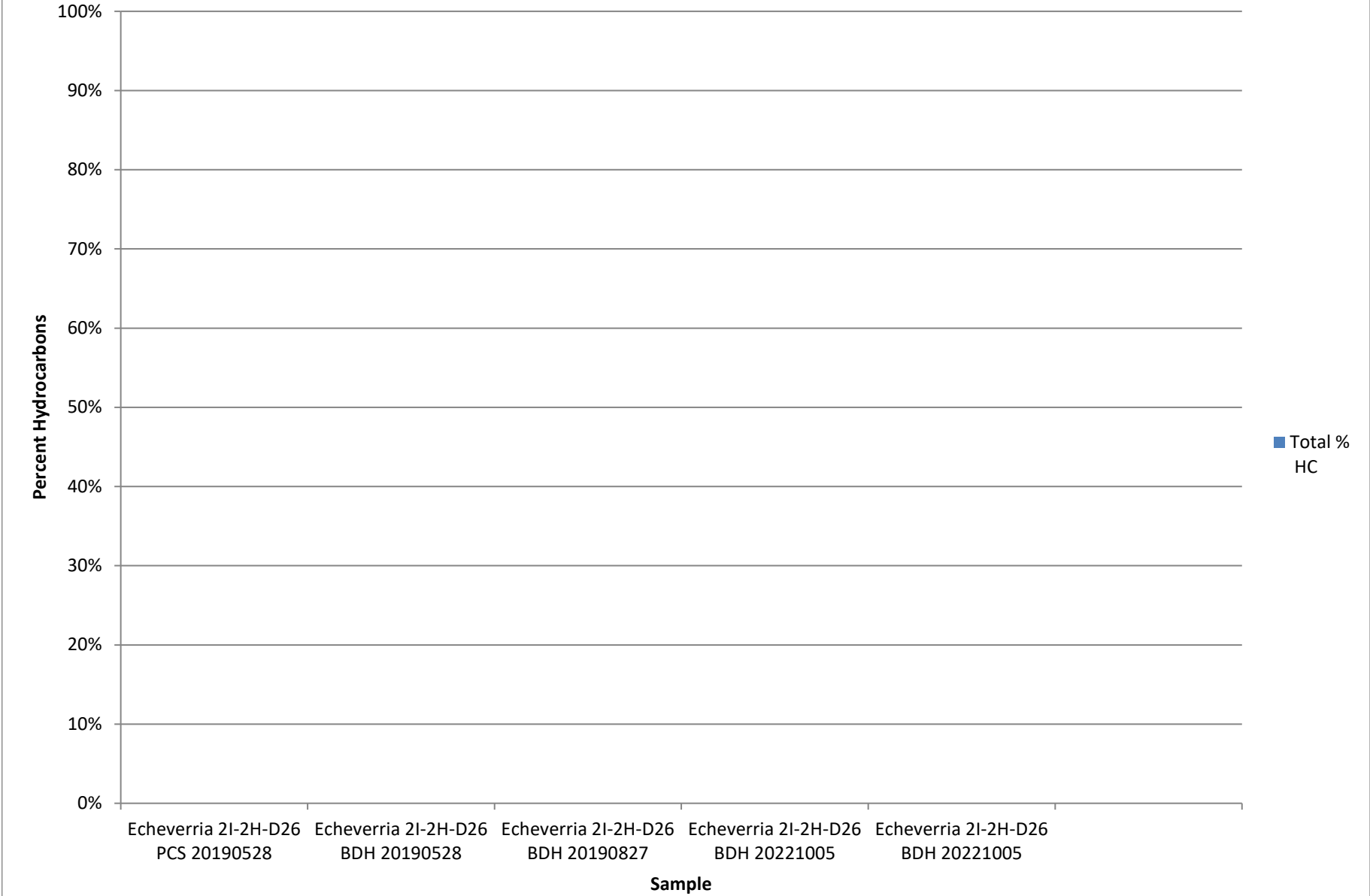
### Methane $\delta^{13}\text{C}$ vs $\delta\text{D}$ Genetic Classification Plot



### Methane $\delta^{13}\text{C}$ vs $\text{C}_1/(\text{C}_2+\text{C}_3)$ Genetic Classification Plot



# Total Percent Hydrocarbons



**GAS COMPOSITION**

Y-axis: GAS COMPOSITION (MOL %)

X-axis: Parameter

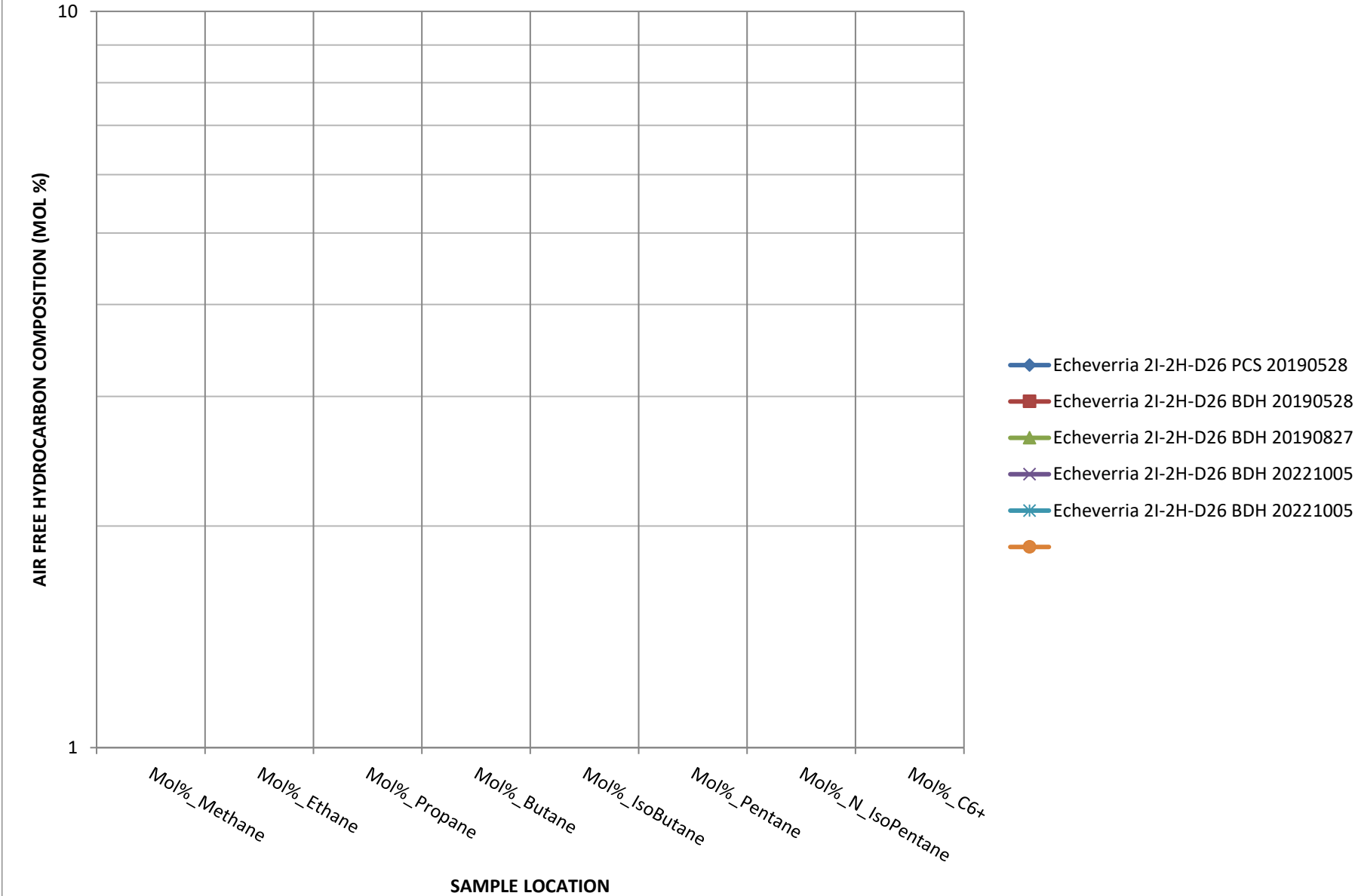
Legend:

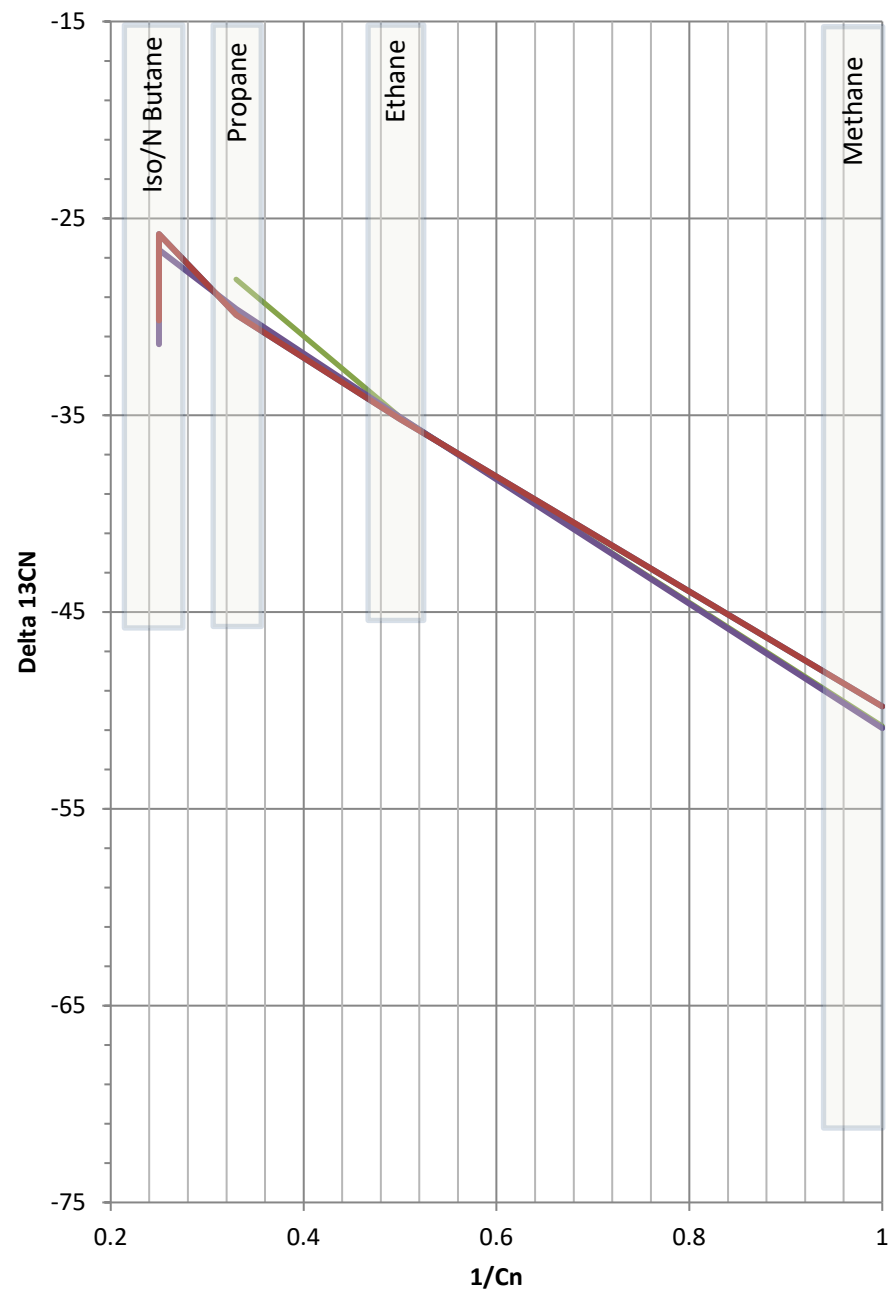
- Echeverria 2I-2H-D26 PCS 20190528
- Echeverria 2I-2H-D26 BDH 20190528
- Echeverria 2I-2H-D26 BDH 20190827
- Echeverria 2I-2H-D26 BDH 20221005
- Echeverria 2I-2H-D26 BDH 20221005

Parameter	Echeverria 2I-2H-D26 PCS 20190528	Echeverria 2I-2H-D26 BDH 20190528	Echeverria 2I-2H-D26 BDH 20190827	Echeverria 2I-2H-D26 BDH 20221005	Echeverria 2I-2H-D26 BDH 20221005
Mol%_Nitrogen	~80	~2	~2	~4	~4
Mol%_Oxygen	~20	~0.12	~0.18	~0.18	~0.18
Mol%_Argon	~0.9	~0.015	~0.02	~0.02	~0.02
Mol%_O2+AR	~0.12	~0.12	~0.12	~0.12	~0.12
Mol%_CarbonDiOxide	~0.01	~0.01	~0.01	~0.01	~0.01
Mol%_CarbonMonoxide	~0.01	~0.01	~0.01	~0.01	~0.01
Mol%_Helium	~0.01	~0.01	~0.01	~0.01	~0.01
Mol%_hydrogen	~95	~95	~95	~95	~95
Mol%_Methane	~6	~6	~6	~6	~6
Mol%_Ethane	~0.7	~0.7	~0.7	~0.7	~0.7
Mol%_Propane	~0.15	~0.15	~0.15	~0.15	~0.15
Mol%_Butane	~0.1	~0.1	~0.1	~0.1	~0.1
Mol%_IsoButane	~0.01	~0.01	~0.01	~0.01	~0.01
Mol%_N_Pentane	~0.01	~0.01	~0.01	~0.01	~0.01
Mol%_C6+	~0.01	~0.01	~0.01	~0.01	~0.01

- Echeverria 2l-2H-D26 PCS  
20190528
- Echeverria 2l-2H-D26 BDH  
20190528
- Echeverria 2l-2H-D26 BDH  
20190827
- Echeverria 2l-2H-D26 BDH  
20221005
- Echeverria 2l-2H-D26 BDH  
20221005

HYDROCARBON COMPOSITION





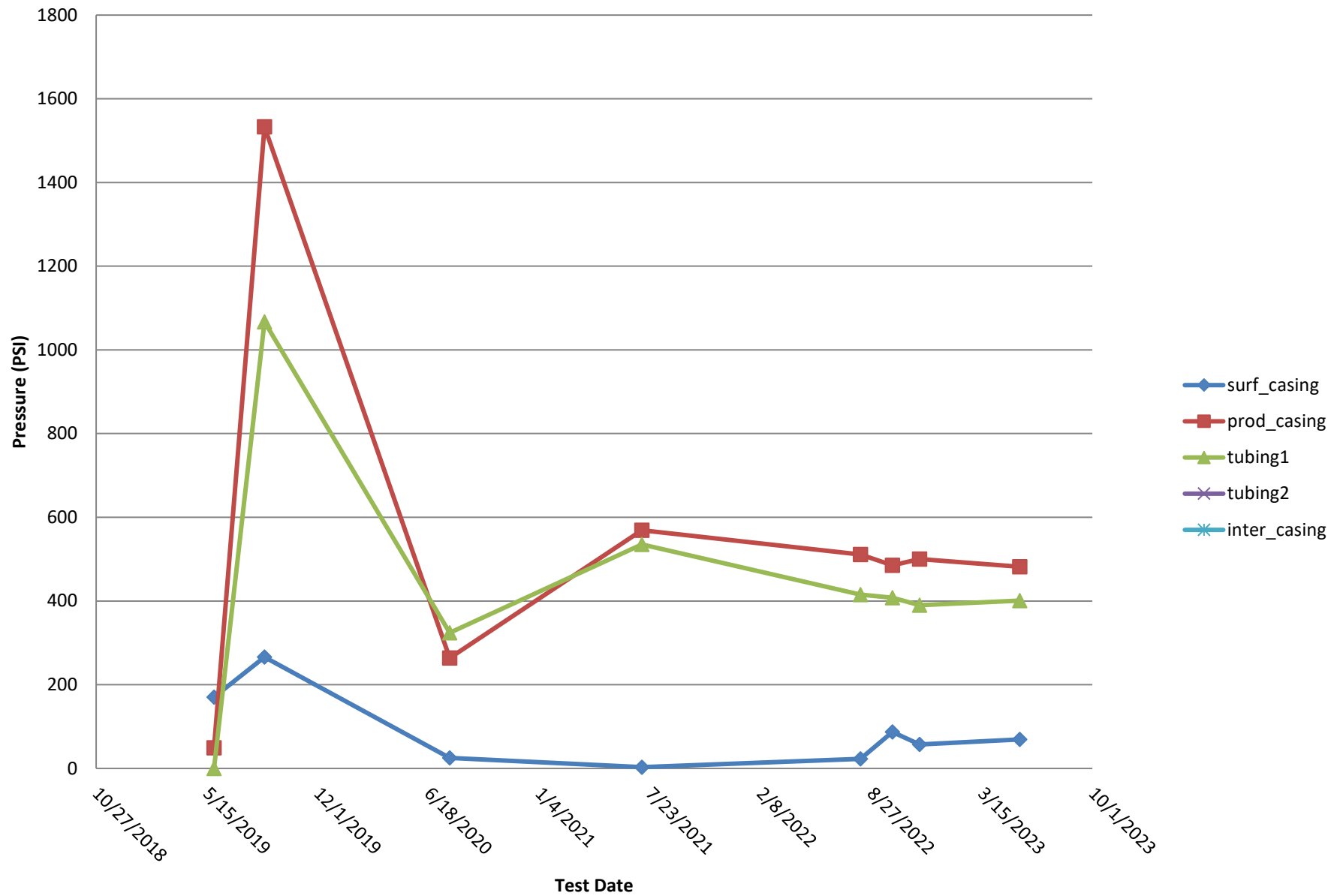
Echeverria 2I-2H-D26 BDH

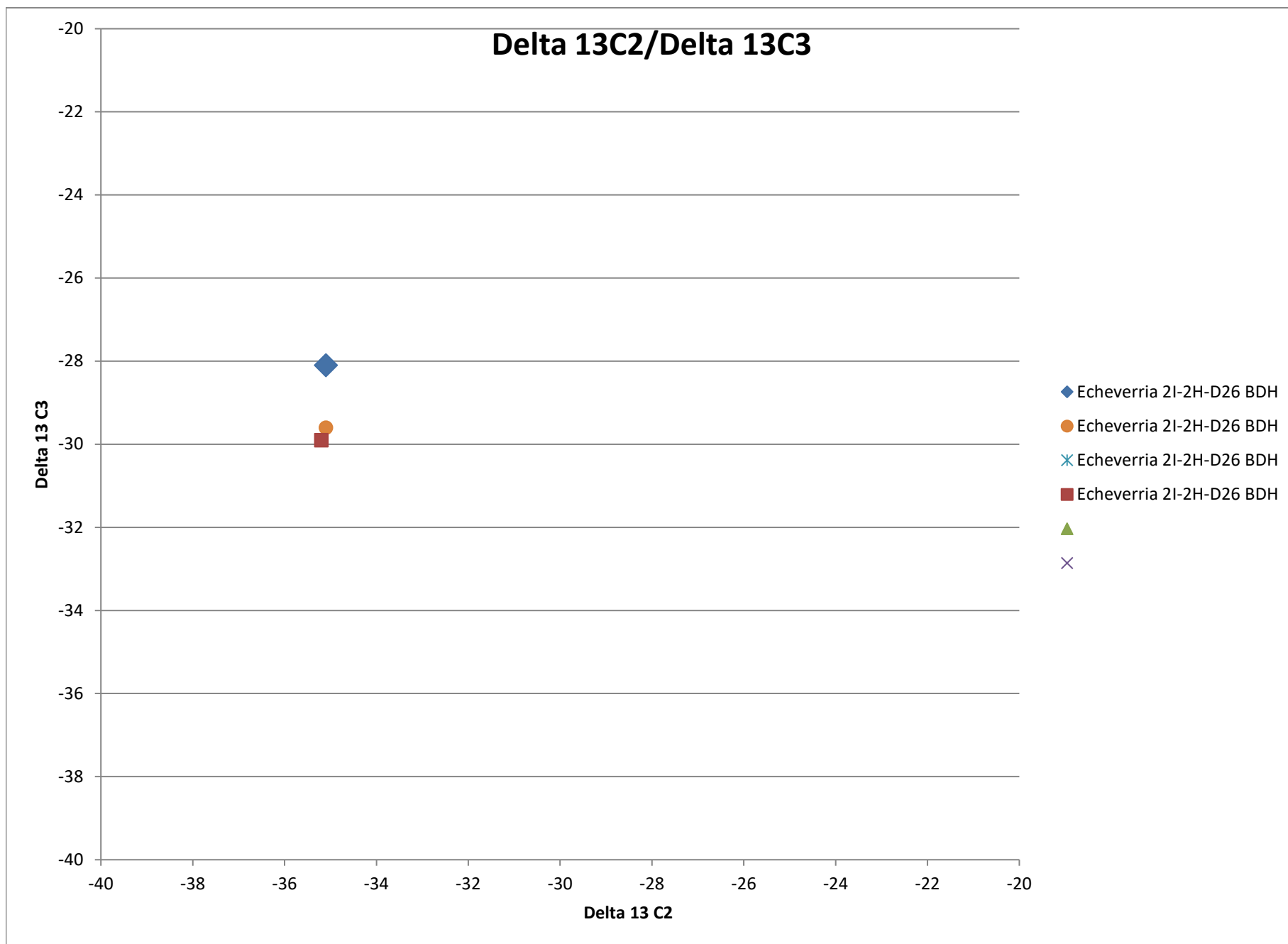
Echeverria 2I-2H-D26 BDH

Echeverria 2I-2H-D26 BDH

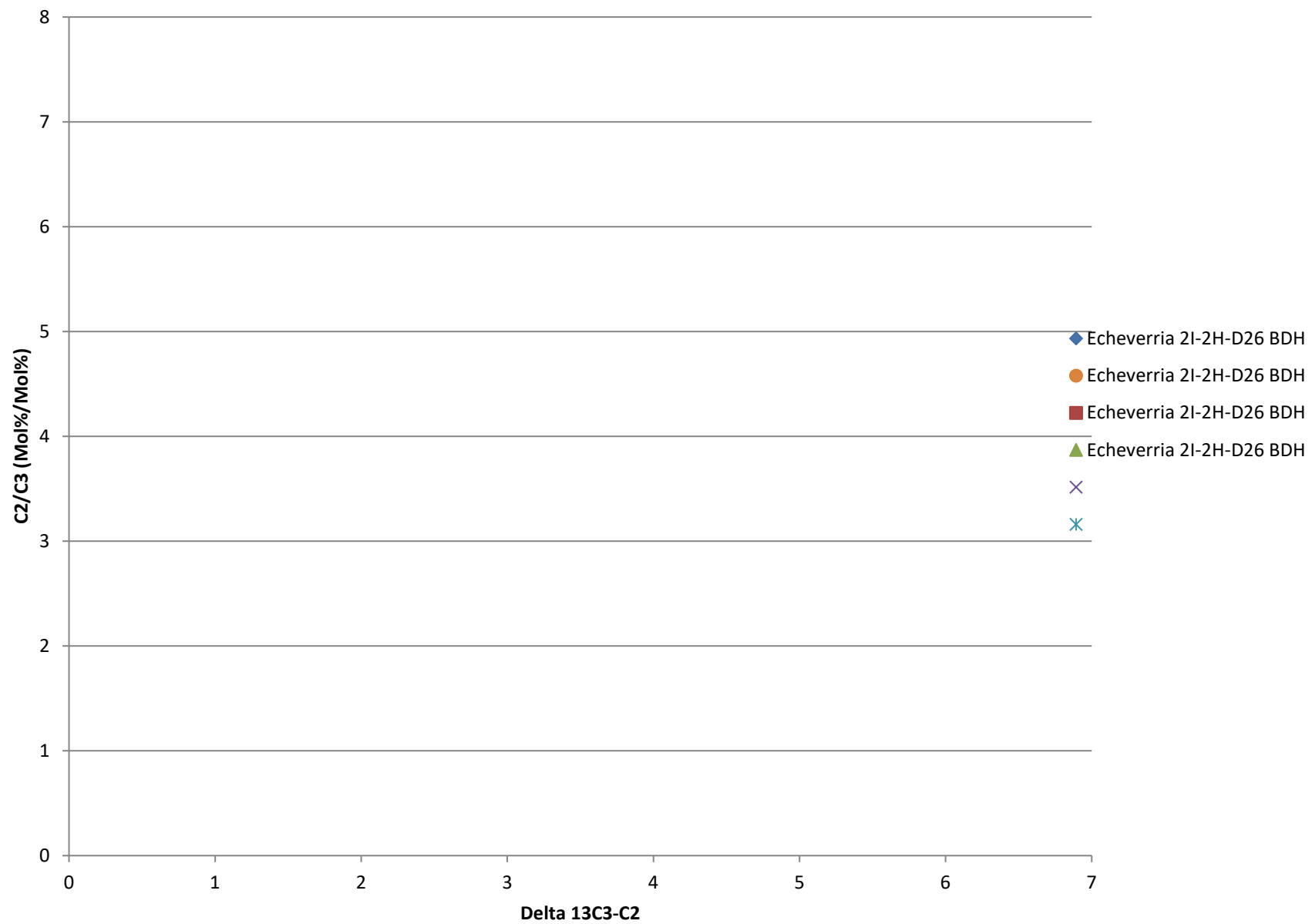
Echeverria 2I-2H-D26 BDH

## Bradenhead Test Summary





## Delta13 C2/C3 vs. Delta 13C3-C2





## Delta 13 IC4/ Delta NC4

