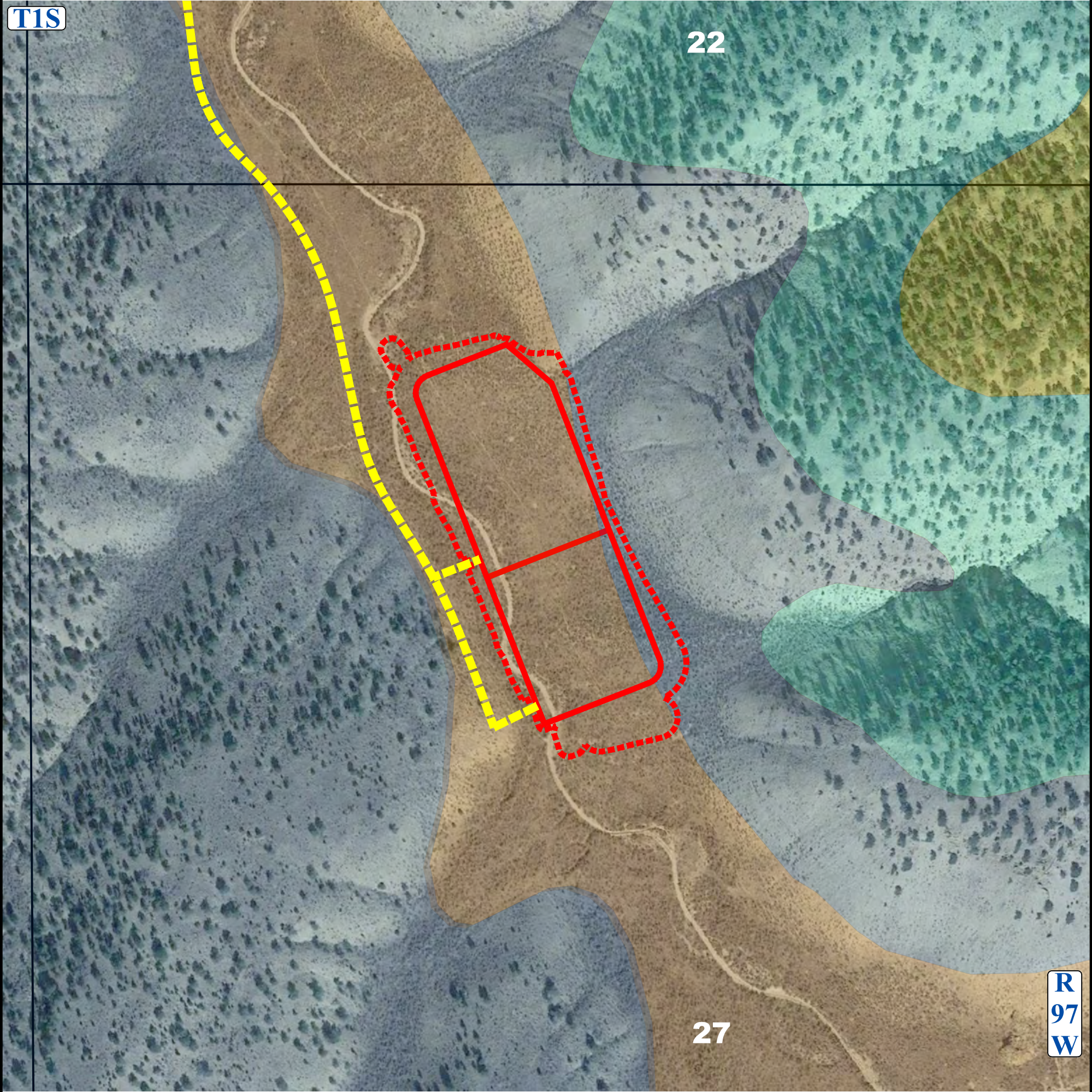


LEGEND

- = OIL & GAS LOCATION
- = WORKING PAD SURFACE
- = PROPOSED ACCESS ROAD
- = REDCREEK-RENTSAC COMPLEX 5 TO 30 PERCENT SLOPES (0.000 ACRES)
- = RENTSAC CHANNERY LOAM 5 TO 50 PERCENT SLOPES (0.000 ACRES)
- = TORRIORTHENTS-ROCK OUTCROP COMPLEX 15 TO 90 PERCENT SLOPES (0.635 ACRES)
- = BARUS CHANNERY LOAMY SAND 2 TO 8 PERCENT SLOPES (5.058 ACRES)



REV: 4 03-15-23 T.L.L. (UPDATE ACCESS ROAD)

