

Project: Rio Blanco County, CO
 Site: ELU A18 495 Pad
 Well: ELU A18 FED 11A-18 495
 Wellbore: Wellbore #1
 Design: Design #4
 Latitude: 39.709011
 Longitude: -108.103957
 Ground Level: 8029.0
 RKB=30° @ 8059.0usft (TBD)

PROJECT DETAILS: Rio Blanco County, CO

Geodetic System: Universal Transverse Mercator (US Survey Feet)
 Datum: NAD 1927 - Western US
 Ellipsoid: Clarke 1866
 Zone: Zone 12N (114 W to 108 W)
 System Datum: Mean Sea Level

REFERENCE INFORMATION

Vertical (TVD) Reference: RKB=30° @ 8059.0usft (TBD)
 Section (VS) Reference: Slot - 11A-18(0.0N, 0.0E)
 Measured Depth Reference: RKB=30° @ 8059.0usft (TBD)
 Calculation Method: Minimum Curvature

SECTION DETAILS

MD	Inc	Azi	TVD	+N/-S	+E/-W	Ddeg	TFace	Vsect	Annotation
0.0	0.00	0.00	0.0	0.0	0.0	0.00	0.00	0.0	
200.0	0.00	0.00	200.0	0.0	0.0	0.00	0.00	0.0	Build 3° / 100'
366.7	5.00	64.00	366.5	3.2	6.5	3.00	64.00	6.6	EOB @ 5.00° Inc. / 64.00° Azm / Build 3° / 100'
673.9	13.56	88.14	669.5	10.2	54.7	3.00	36.76	54.8	EOB @ 13.55° Inc. / 88.14° Azm
8513.1	13.56	88.14	8290.4	69.8	1891.1	0.00	0.00	1891.8	Drop 3° / 100'
8965.0	0.00	0.00	8738.0	71.5	1944.3	3.00	180.00	1945.0	EOD @ Vertical / Build 1.5° / 100'
9046.6	1.22	240.00	8819.6	71.1	1943.5	1.50	240.00	1944.2	EOB @ 1.22° Inc. / 240.00° Azm
13689.1	1.22	240.00	13461.0	21.5	1857.7	0.00	0.00	1857.8	TD @ 13689.1' MD / 13461.0' TVD

FORMATION TOP DETAILS

TVDPath	MDPath	Formation
3366.0	3447.7	Wasatch
6572.0	6745.6	Wasatch G
6872.0	7054.2	Fort Union
8738.0	8965.0	Ohio Creek
9336.0	9553.1	Williams Fork
12462.0	12689.8	Cameo
13161.0	13389.0	Rollins

DESIGN TARGET DETAILS

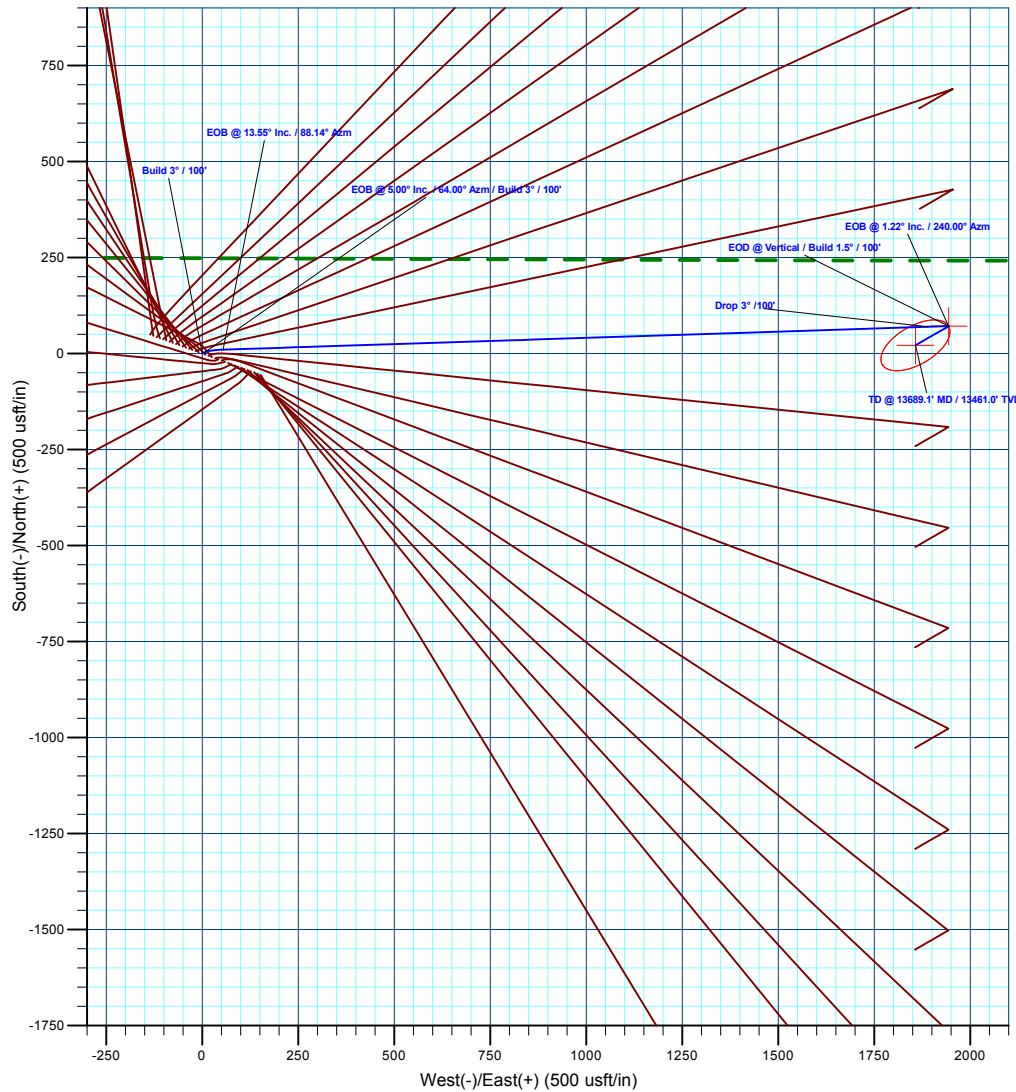
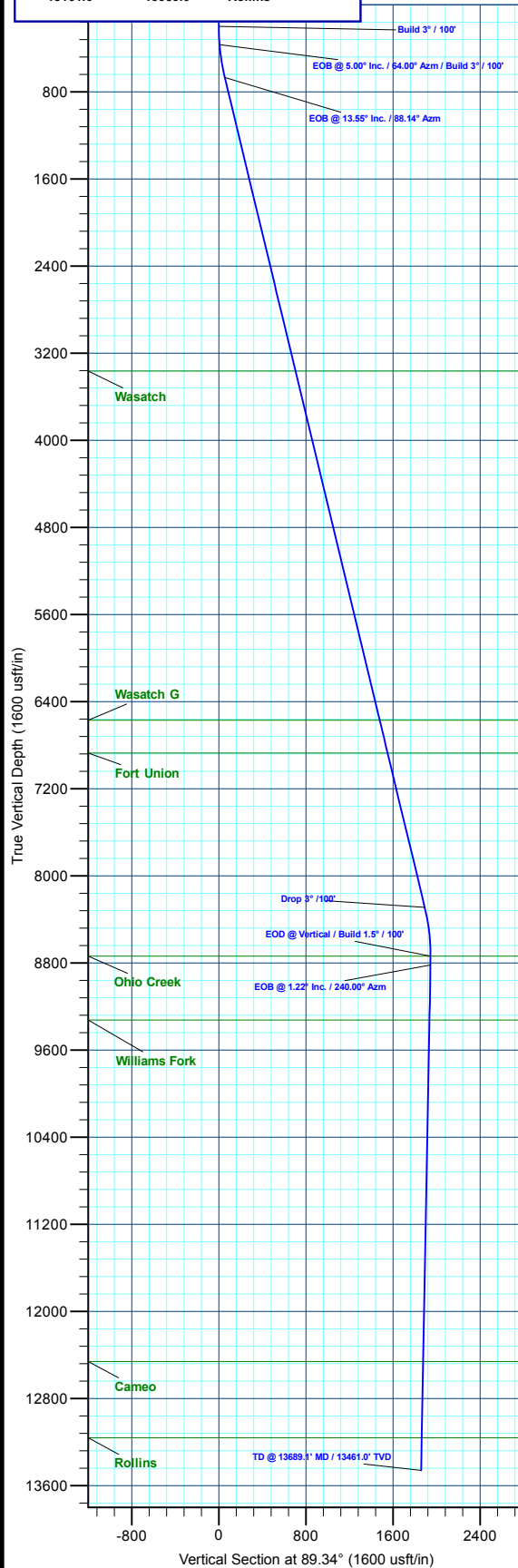
Name	TVD	+N/-S	+E/-W	Northing	Easting	Latitude	Longitude
11A-18 - OHCR	8738.0	71.5	1944.3	14433380.77	2456914.94	39.709207	-108.097049
11A-18 - PBHL	13461.0	21.5	1857.7	14433328.00	2456830.00	39.709070	-108.097357

WELL DETAILS: ELU A18 FED 11A-18 495

		Ground Level : 8029.0					
+N/-S	+E/-W	Northing	Easting	Latitude	Longitude		
0.0	0.0	14433246.50	2454974.00	39.709011	-108.103957	11A-18	



T M
 Azimuths to True North
 Magnetic North: 9.42°
 Magnetic Field
 Strength: 51156.9nT
 Dip Angle: 65.82°
 Date: 8/17/2020
 Model: HDGM2020



Plan: Design #4 (ELU A18 FED 11A-18 495/Wellbore #1)

Created By: Will Jircik Date: 4:29, October 05 2023



Caerus Oil & Gas

Rio Blanco County, CO

ELU A18 495 Pad

ELU A18 FED 11A-18 495 - Slot 11A-18

Wellbore #1

Plan: Design #4

KLX Well Planning Report

04 October, 2023



Database:	EDM 5000.1 Single User Db	Local Co-ordinate Reference:	Well ELU A18 FED 11A-18 495 - Slot 11A-18
Company:	Caerus Oil & Gas	TVD Reference:	RKB=30' @ 8059.0usft (TBD)
Project:	Rio Blanco County, CO	MD Reference:	RKB=30' @ 8059.0usft (TBD)
Site:	ELU A18 495 Pad	North Reference:	True
Well:	ELU A18 FED 11A-18 495	Survey Calculation Method:	Minimum Curvature
Wellbore:	Wellbore #1		
Design:	Design #4		

Project	Rio Blanco County, CO		
Map System:	Universal Transverse Mercator (US Survey Fee	System Datum:	Mean Sea Level
Geo Datum:	NAD 1927 - Western US		
Map Zone:	Zone 12N (114 W to 108 W)		

Site	ELU A18 495 Pad				
Site Position:		Northing:	14,433,279.80 usft	Latitude:	39.709109
From:	Map	Easting:	2,454,904.40 usft	Longitude:	-108.104201
Position Uncertainty:	0.0 usft	Slot Radius:	13-3/16 "	Grid Convergence:	1.85 °

Well	ELU A18 FED 11A-18 495 - Slot 11A-18					
Well Position	+N/-S	-35.5 usft	Northing:	14,433,246.50 usft	Latitude:	39.709011
	+E/-W	68.5 usft	Easting:	2,454,974.00 usft	Longitude:	-108.103957
Position Uncertainty		0.0 usft	Wellhead Elevation:		Ground Level:	8,029.0 usft

Wellbore	Wellbore #1				
Magnetics	Model Name	Sample Date	Declination (°)	Dip Angle (°)	Field Strength (nT)
	HDGM2020	8/17/2020	9.42	65.82	51,156.90000000

Design	Design #4			
Audit Notes:				
Version:	Phase:	PLAN	Tie On Depth:	0.0
Vertical Section:	Depth From (TVD) (usft)	+N/-S (usft)	+E/-W (usft)	Direction (°)
	0.0	0.0	0.0	89.34

Plan Sections										
Measured Depth (usft)	Inclination (°)	Azimuth (°)	Vertical Depth (usft)	+N/-S (usft)	+E/-W (usft)	Dogleg Rate (°/100usft)	Build Rate (°/100usft)	Turn Rate (°/100usft)	TFO (°)	Target
0.0	0.00	0.00	0.0	0.0	0.0	0.00	0.00	0.00	0.00	
200.0	0.00	0.00	200.0	0.0	0.0	0.00	0.00	0.00	0.00	
366.7	5.00	64.00	366.5	3.2	6.5	3.00	3.00	0.00	64.00	
673.9	13.56	88.14	669.5	10.2	54.7	3.00	2.78	7.86	36.76	
8,513.1	13.56	88.14	8,290.4	69.8	1,891.1	0.00	0.00	0.00	0.00	
8,965.0	0.00	0.00	8,738.0	71.5	1,944.3	3.00	-3.00	0.00	180.00	11A-18 - OHCR
9,046.6	1.22	240.00	8,819.6	71.1	1,943.5	1.50	1.50	-147.12	240.00	
13,689.1	1.22	240.00	13,461.0	21.5	1,857.7	0.00	0.00	0.00	0.00	11A-18 - PBHL

Database:	EDM 5000.1 Single User Db	Local Co-ordinate Reference:	Well ELU A18 FED 11A-18 495 - Slot 11A-18
Company:	Caerus Oil & Gas	TVD Reference:	RKB=30' @ 8059.0usft (TBD)
Project:	Rio Blanco County, CO	MD Reference:	RKB=30' @ 8059.0usft (TBD)
Site:	ELU A18 495 Pad	North Reference:	True
Well:	ELU A18 FED 11A-18 495	Survey Calculation Method:	Minimum Curvature
Wellbore:	Wellbore #1		
Design:	Design #4		

Planned Survey									
Measured Depth (usft)	Inclination (°)	Azimuth (°)	Vertical Depth (usft)	+N/-S (usft)	+E/-W (usft)	Vertical Section (usft)	Dogleg Rate (°/100usft)	Build Rate (°/100usft)	Turn Rate (°/100usft)
0.0	0.00	0.00	0.0	0.0	0.0	0.0	0.00	0.00	0.00
100.0	0.00	0.00	100.0	0.0	0.0	0.0	0.00	0.00	0.00
Build 3° / 100'									
200.0	0.00	0.00	200.0	0.0	0.0	0.0	0.00	0.00	0.00
300.0	3.00	64.00	300.0	1.1	2.4	2.4	3.00	3.00	0.00
EOB @ 5.00° Inc. / 64.00° Azm / Build 3° / 100'									
366.7	5.00	64.00	366.5	3.2	6.5	6.6	3.00	3.00	0.00
400.0	5.83	69.90	399.6	4.4	9.4	9.5	3.00	2.50	17.70
500.0	8.55	80.32	498.8	7.4	21.5	21.6	3.00	2.71	10.42
600.0	11.40	85.65	597.3	9.4	38.7	38.8	3.00	2.86	5.33
EOB @ 13.55° Inc. / 88.14° Azm									
673.9	13.56	88.14	669.5	10.2	54.7	54.8	3.00	2.91	3.38
700.0	13.56	88.14	694.9	10.4	60.8	60.9	0.00	0.00	0.00
800.0	13.56	88.14	792.1	11.2	84.2	84.3	0.00	0.00	0.00
900.0	13.56	88.14	889.3	12.0	107.6	107.8	0.00	0.00	0.00
1,000.0	13.56	88.14	986.5	12.7	131.0	131.2	0.00	0.00	0.00
1,100.0	13.56	88.14	1,083.7	13.5	154.5	154.6	0.00	0.00	0.00
1,200.0	13.56	88.14	1,180.9	14.2	177.9	178.1	0.00	0.00	0.00
1,300.0	13.56	88.14	1,278.1	15.0	201.3	201.5	0.00	0.00	0.00
1,400.0	13.56	88.14	1,375.4	15.8	224.8	224.9	0.00	0.00	0.00
1,500.0	13.56	88.14	1,472.6	16.5	248.2	248.4	0.00	0.00	0.00
1,600.0	13.56	88.14	1,569.8	17.3	271.6	271.8	0.00	0.00	0.00
1,700.0	13.56	88.14	1,667.0	18.0	295.0	295.2	0.00	0.00	0.00
1,800.0	13.56	88.14	1,764.2	18.8	318.5	318.7	0.00	0.00	0.00
1,900.0	13.56	88.14	1,861.4	19.5	341.9	342.1	0.00	0.00	0.00
2,000.0	13.56	88.14	1,958.6	20.3	365.3	365.5	0.00	0.00	0.00
2,100.0	13.56	88.14	2,055.9	21.1	388.7	389.0	0.00	0.00	0.00
2,200.0	13.56	88.14	2,153.1	21.8	412.2	412.4	0.00	0.00	0.00
2,300.0	13.56	88.14	2,250.3	22.6	435.6	435.8	0.00	0.00	0.00
2,400.0	13.56	88.14	2,347.5	23.3	459.0	459.3	0.00	0.00	0.00
2,500.0	13.56	88.14	2,444.7	24.1	482.4	482.7	0.00	0.00	0.00
2,600.0	13.56	88.14	2,541.9	24.9	505.9	506.1	0.00	0.00	0.00
2,700.0	13.56	88.14	2,639.1	25.6	529.3	529.6	0.00	0.00	0.00
2,800.0	13.56	88.14	2,736.4	26.4	552.7	553.0	0.00	0.00	0.00
2,900.0	13.56	88.14	2,833.6	27.1	576.1	576.4	0.00	0.00	0.00
3,000.0	13.56	88.14	2,930.8	27.9	599.6	599.9	0.00	0.00	0.00
3,100.0	13.56	88.14	3,028.0	28.7	623.0	623.3	0.00	0.00	0.00
3,200.0	13.56	88.14	3,125.2	29.4	646.4	646.7	0.00	0.00	0.00
3,300.0	13.56	88.14	3,222.4	30.2	669.8	670.2	0.00	0.00	0.00
3,400.0	13.56	88.14	3,319.6	30.9	693.3	693.6	0.00	0.00	0.00
Wasatch									
3,447.7	13.56	88.14	3,366.0	31.3	704.4	704.8	0.00	0.00	0.00
3,500.0	13.56	88.14	3,416.9	31.7	716.7	717.0	0.00	0.00	0.00
3,600.0	13.56	88.14	3,514.1	32.5	740.1	740.5	0.00	0.00	0.00
3,700.0	13.56	88.14	3,611.3	33.2	763.6	763.9	0.00	0.00	0.00
3,800.0	13.56	88.14	3,708.5	34.0	787.0	787.3	0.00	0.00	0.00
3,900.0	13.56	88.14	3,805.7	34.7	810.4	810.8	0.00	0.00	0.00
4,000.0	13.56	88.14	3,902.9	35.5	833.8	834.2	0.00	0.00	0.00
4,100.0	13.56	88.14	4,000.1	36.3	857.3	857.6	0.00	0.00	0.00
4,200.0	13.56	88.14	4,097.4	37.0	880.7	881.1	0.00	0.00	0.00
4,300.0	13.56	88.14	4,194.6	37.8	904.1	904.5	0.00	0.00	0.00
4,400.0	13.56	88.14	4,291.8	38.5	927.5	927.9	0.00	0.00	0.00
4,500.0	13.56	88.14	4,389.0	39.3	951.0	951.4	0.00	0.00	0.00
4,600.0	13.56	88.14	4,486.2	40.1	974.4	974.8	0.00	0.00	0.00

Database:	EDM 5000.1 Single User Db	Local Co-ordinate Reference:	Well ELU A18 FED 11A-18 495 - Slot 11A-18
Company:	Caerus Oil & Gas	TVD Reference:	RKB=30' @ 8059.0usft (TBD)
Project:	Rio Blanco County, CO	MD Reference:	RKB=30' @ 8059.0usft (TBD)
Site:	ELU A18 495 Pad	North Reference:	True
Well:	ELU A18 FED 11A-18 495	Survey Calculation Method:	Minimum Curvature
Wellbore:	Wellbore #1		
Design:	Design #4		

Planned Survey									
Measured Depth (usft)	Inclination (°)	Azimuth (°)	Vertical Depth (usft)	+N/-S (usft)	+E/-W (usft)	Vertical Section (usft)	Dogleg Rate (°/100usft)	Build Rate (°/100usft)	Turn Rate (°/100usft)
4,700.0	13.56	88.14	4,583.4	40.8	997.8	998.2	0.00	0.00	0.00
4,800.0	13.56	88.14	4,680.6	41.6	1,021.2	1,021.7	0.00	0.00	0.00
4,900.0	13.56	88.14	4,777.9	42.3	1,044.7	1,045.1	0.00	0.00	0.00
5,000.0	13.56	88.14	4,875.1	43.1	1,068.1	1,068.5	0.00	0.00	0.00
5,100.0	13.56	88.14	4,972.3	43.9	1,091.5	1,092.0	0.00	0.00	0.00
5,200.0	13.56	88.14	5,069.5	44.6	1,114.9	1,115.4	0.00	0.00	0.00
5,300.0	13.56	88.14	5,166.7	45.4	1,138.4	1,138.8	0.00	0.00	0.00
5,400.0	13.56	88.14	5,263.9	46.1	1,161.8	1,162.3	0.00	0.00	0.00
5,500.0	13.56	88.14	5,361.1	46.9	1,185.2	1,185.7	0.00	0.00	0.00
5,600.0	13.56	88.14	5,458.4	47.6	1,208.7	1,209.1	0.00	0.00	0.00
5,700.0	13.56	88.14	5,555.6	48.4	1,232.1	1,232.6	0.00	0.00	0.00
5,800.0	13.56	88.14	5,652.8	49.2	1,255.5	1,256.0	0.00	0.00	0.00
5,900.0	13.56	88.14	5,750.0	49.9	1,278.9	1,279.4	0.00	0.00	0.00
6,000.0	13.56	88.14	5,847.2	50.7	1,302.4	1,302.9	0.00	0.00	0.00
6,100.0	13.56	88.14	5,944.4	51.4	1,325.8	1,326.3	0.00	0.00	0.00
6,200.0	13.56	88.14	6,041.6	52.2	1,349.2	1,349.7	0.00	0.00	0.00
6,300.0	13.56	88.14	6,138.9	53.0	1,372.6	1,373.2	0.00	0.00	0.00
6,400.0	13.56	88.14	6,236.1	53.7	1,396.1	1,396.6	0.00	0.00	0.00
6,500.0	13.56	88.14	6,333.3	54.5	1,419.5	1,420.0	0.00	0.00	0.00
6,600.0	13.56	88.14	6,430.5	55.2	1,442.9	1,443.5	0.00	0.00	0.00
6,700.0	13.56	88.14	6,527.7	56.0	1,466.3	1,466.9	0.00	0.00	0.00
Wasatch G									
6,745.6	13.56	88.14	6,572.0	56.3	1,477.0	1,477.6	0.00	0.00	0.00
6,800.0	13.56	88.14	6,624.9	56.8	1,489.8	1,490.3	0.00	0.00	0.00
6,900.0	13.56	88.14	6,722.1	57.5	1,513.2	1,513.8	0.00	0.00	0.00
7,000.0	13.56	88.14	6,819.4	58.3	1,536.6	1,537.2	0.00	0.00	0.00
Fort Union									
7,054.2	13.56	88.14	6,872.0	58.7	1,549.3	1,549.9	0.00	0.00	0.00
7,100.0	13.56	88.14	6,916.6	59.0	1,560.0	1,560.6	0.00	0.00	0.00
7,200.0	13.56	88.14	7,013.8	59.8	1,583.5	1,584.1	0.00	0.00	0.00
7,300.0	13.56	88.14	7,111.0	60.6	1,606.9	1,607.5	0.00	0.00	0.00
7,400.0	13.56	88.14	7,208.2	61.3	1,630.3	1,630.9	0.00	0.00	0.00
7,500.0	13.56	88.14	7,305.4	62.1	1,653.8	1,654.4	0.00	0.00	0.00
7,600.0	13.56	88.14	7,402.6	62.8	1,677.2	1,677.8	0.00	0.00	0.00
7,700.0	13.56	88.14	7,499.9	63.6	1,700.6	1,701.2	0.00	0.00	0.00
7,800.0	13.56	88.14	7,597.1	64.4	1,724.0	1,724.7	0.00	0.00	0.00
7,900.0	13.56	88.14	7,694.3	65.1	1,747.5	1,748.1	0.00	0.00	0.00
8,000.0	13.56	88.14	7,791.5	65.9	1,770.9	1,771.5	0.00	0.00	0.00
8,100.0	13.56	88.14	7,888.7	66.6	1,794.3	1,795.0	0.00	0.00	0.00
8,200.0	13.56	88.14	7,985.9	67.4	1,817.7	1,818.4	0.00	0.00	0.00
8,300.0	13.56	88.14	8,083.1	68.2	1,841.2	1,841.8	0.00	0.00	0.00
8,400.0	13.56	88.14	8,180.4	68.9	1,864.6	1,865.3	0.00	0.00	0.00
8,500.0	13.56	88.14	8,277.6	69.7	1,888.0	1,888.7	0.00	0.00	0.00
Drop 3° /100'									
8,513.1	13.56	88.14	8,290.4	69.8	1,891.1	1,891.8	0.00	0.00	0.00
8,600.0	10.95	88.14	8,375.2	70.4	1,909.5	1,910.2	3.00	-3.00	0.00
8,700.0	7.95	88.14	8,473.9	70.9	1,925.9	1,926.6	3.00	-3.00	0.00
8,800.0	4.95	88.14	8,573.2	71.3	1,937.1	1,937.8	3.00	-3.00	0.00
8,900.0	1.95	88.14	8,673.0	71.5	1,943.2	1,943.9	3.00	-3.00	0.00
EOD @ Vertical / Build 1.5° / 100' - Ohio Creek									
8,965.0	0.00	0.00	8,738.0	71.5	1,944.3	1,945.0	3.00	-3.00	0.00
9,000.0	0.53	240.00	8,773.0	71.4	1,944.1	1,944.8	1.50	1.50	0.00
EOB @ 1.22° Inc. / 240.00° Azm									

Database:	EDM 5000.1 Single User Db	Local Co-ordinate Reference:	Well ELU A18 FED 11A-18 495 - Slot 11A-18
Company:	Caerus Oil & Gas	TVD Reference:	RKB=30' @ 8059.0usft (TBD)
Project:	Rio Blanco County, CO	MD Reference:	RKB=30' @ 8059.0usft (TBD)
Site:	ELU A18 495 Pad	North Reference:	True
Well:	ELU A18 FED 11A-18 495	Survey Calculation Method:	Minimum Curvature
Wellbore:	Wellbore #1		
Design:	Design #4		

Planned Survey										
Measured Depth (usft)	Inclination (°)	Azimuth (°)	Vertical Depth (usft)	+N/-S (usft)	+E/-W (usft)	Vertical Section (usft)	Dogleg Rate (°/100usft)	Build Rate (°/100usft)	Turn Rate (°/100usft)	
9,046.6	1.22	240.00	8,819.6	71.1	1,943.5	1,944.2	1.50	1.50	0.00	
9,100.0	1.22	240.00	8,873.0	70.5	1,942.5	1,943.2	0.00	0.00	0.00	
9,200.0	1.22	240.00	8,973.0	69.4	1,940.7	1,941.3	0.00	0.00	0.00	
9,300.0	1.22	240.00	9,072.9	68.4	1,938.8	1,939.5	0.00	0.00	0.00	
9,400.0	1.22	240.00	9,172.9	67.3	1,937.0	1,937.6	0.00	0.00	0.00	
9,500.0	1.22	240.00	9,272.9	66.2	1,935.1	1,935.8	0.00	0.00	0.00	
Williams Fork										
9,553.1	1.22	240.00	9,326.0	65.7	1,934.1	1,934.8	0.00	0.00	0.00	
9,600.0	1.22	240.00	9,372.9	65.2	1,933.3	1,933.9	0.00	0.00	0.00	
9,700.0	1.22	240.00	9,472.8	64.1	1,931.4	1,932.0	0.00	0.00	0.00	
9,800.0	1.22	240.00	9,572.8	63.0	1,929.6	1,930.2	0.00	0.00	0.00	
9,900.0	1.22	240.00	9,672.8	61.9	1,927.7	1,928.3	0.00	0.00	0.00	
10,000.0	1.22	240.00	9,772.8	60.9	1,925.9	1,926.5	0.00	0.00	0.00	
10,100.0	1.22	240.00	9,872.8	59.8	1,924.0	1,924.6	0.00	0.00	0.00	
10,200.0	1.22	240.00	9,972.7	58.7	1,922.2	1,922.7	0.00	0.00	0.00	
10,300.0	1.22	240.00	10,072.7	57.7	1,920.3	1,920.9	0.00	0.00	0.00	
10,400.0	1.22	240.00	10,172.7	56.6	1,918.5	1,919.0	0.00	0.00	0.00	
10,500.0	1.22	240.00	10,272.7	55.5	1,916.6	1,917.2	0.00	0.00	0.00	
10,600.0	1.22	240.00	10,372.6	54.5	1,914.8	1,915.3	0.00	0.00	0.00	
10,700.0	1.22	240.00	10,472.6	53.4	1,912.9	1,913.4	0.00	0.00	0.00	
10,800.0	1.22	240.00	10,572.6	52.3	1,911.1	1,911.6	0.00	0.00	0.00	
10,900.0	1.22	240.00	10,672.6	51.3	1,909.2	1,909.7	0.00	0.00	0.00	
11,000.0	1.22	240.00	10,772.6	50.2	1,907.4	1,907.8	0.00	0.00	0.00	
11,100.0	1.22	240.00	10,872.5	49.1	1,905.5	1,906.0	0.00	0.00	0.00	
11,200.0	1.22	240.00	10,972.5	48.1	1,903.7	1,904.1	0.00	0.00	0.00	
11,300.0	1.22	240.00	11,072.5	47.0	1,901.8	1,902.3	0.00	0.00	0.00	
11,400.0	1.22	240.00	11,172.5	45.9	1,900.0	1,900.4	0.00	0.00	0.00	
11,500.0	1.22	240.00	11,272.4	44.9	1,898.1	1,898.5	0.00	0.00	0.00	
11,600.0	1.22	240.00	11,372.4	43.8	1,896.3	1,896.7	0.00	0.00	0.00	
11,700.0	1.22	240.00	11,472.4	42.7	1,894.4	1,894.8	0.00	0.00	0.00	
11,800.0	1.22	240.00	11,572.4	41.7	1,892.6	1,893.0	0.00	0.00	0.00	
11,900.0	1.22	240.00	11,672.3	40.6	1,890.7	1,891.1	0.00	0.00	0.00	
12,000.0	1.22	240.00	11,772.3	39.5	1,888.9	1,889.2	0.00	0.00	0.00	
12,100.0	1.22	240.00	11,872.3	38.5	1,887.0	1,887.4	0.00	0.00	0.00	
12,200.0	1.22	240.00	11,972.3	37.4	1,885.2	1,885.5	0.00	0.00	0.00	
12,300.0	1.22	240.00	12,072.3	36.3	1,883.4	1,883.6	0.00	0.00	0.00	
12,400.0	1.22	240.00	12,172.2	35.3	1,881.5	1,881.8	0.00	0.00	0.00	
12,500.0	1.22	240.00	12,272.2	34.2	1,879.7	1,879.9	0.00	0.00	0.00	
12,600.0	1.22	240.00	12,372.2	33.1	1,877.8	1,878.1	0.00	0.00	0.00	
Cameo										
12,689.8	1.22	240.00	12,462.0	32.2	1,876.1	1,876.4	0.00	0.00	0.00	
12,700.0	1.22	240.00	12,472.2	32.1	1,876.0	1,876.2	0.00	0.00	0.00	
12,800.0	1.22	240.00	12,572.1	31.0	1,874.1	1,874.3	0.00	0.00	0.00	
12,900.0	1.22	240.00	12,672.1	29.9	1,872.3	1,872.5	0.00	0.00	0.00	
13,000.0	1.22	240.00	12,772.1	28.9	1,870.4	1,870.6	0.00	0.00	0.00	
13,100.0	1.22	240.00	12,872.1	27.8	1,868.6	1,868.8	0.00	0.00	0.00	
13,200.0	1.22	240.00	12,972.1	26.7	1,866.7	1,866.9	0.00	0.00	0.00	
13,300.0	1.22	240.00	13,072.0	25.7	1,864.9	1,865.0	0.00	0.00	0.00	
Rollins										
13,389.0	1.22	240.00	13,161.0	24.7	1,863.2	1,863.4	0.00	0.00	0.00	
13,400.0	1.22	240.00	13,172.0	24.6	1,863.0	1,863.2	0.00	0.00	0.00	
13,500.0	1.22	240.00	13,272.0	23.5	1,861.2	1,861.3	0.00	0.00	0.00	
13,600.0	1.22	240.00	13,372.0	22.4	1,859.3	1,859.4	0.00	0.00	0.00	

Database:	EDM 5000.1 Single User Db	Local Co-ordinate Reference:	Well ELU A18 FED 11A-18 495 - Slot 11A-18
Company:	Caerus Oil & Gas	TVD Reference:	RKB=30' @ 8059.0usft (TBD)
Project:	Rio Blanco County, CO	MD Reference:	RKB=30' @ 8059.0usft (TBD)
Site:	ELU A18 495 Pad	North Reference:	True
Well:	ELU A18 FED 11A-18 495	Survey Calculation Method:	Minimum Curvature
Wellbore:	Wellbore #1		
Design:	Design #4		

Planned Survey										
Measured Depth (usft)	Inclination (°)	Azimuth (°)	Vertical Depth (usft)	+N/-S (usft)	+E/-W (usft)	Vertical Section (usft)	Dogleg Rate (°/100usft)	Build Rate (°/100usft)	Turn Rate (°/100usft)	
TD @ 13689.1' MD / 13461.0' TVD										
13,689.1	1.22	240.00	13,461.0	21.5	1,857.7	1,857.8	0.00	0.00	0.00	

Design Targets									
Target Name	Dip Angle (°)	Dip Dir. (°)	TVD (usft)	+N/-S (usft)	+E/-W (usft)	Northing (usft)	Easting (usft)	Latitude	Longitude
11A-18 - OHCR - hit/miss target - Shape - Point	0.00	0.00	8,738.0	71.5	1,944.3	14,433,380.77	2,456,914.95	39.709207	-108.097050
11A-18 - PBHL - plan hits target center - Ellipse (radii L100.0 W50.0 on 240.0 azi)	0.00	0.00	13,461.0	21.5	1,857.7	14,433,328.00	2,456,830.00	39.709070	-108.097357

Formations						
Measured Depth (usft)	Vertical Depth (usft)	Name	Lithology	Dip (°)	Dip Direction (°)	
3,447.7	3,366.0	Wasatch				
6,745.6	6,572.0	Wasatch G				
7,054.2	6,872.0	Fort Union				
8,965.0	8,738.0	Ohio Creek				
9,553.1	9,326.0	Williams Fork				
12,689.8	12,462.0	Cameo				
13,389.0	13,161.0	Rollins				

Plan Annotations					
Measured Depth (usft)	Vertical Depth (usft)	+N/-S (usft)	+E/-W (usft)	Comment	
200.0	200.0	0.0	0.0	Build 3° / 100'	
366.7	366.5	3.2	6.5	EOB @ 5.00° Inc. / 64.00° Azm / Build 3° / 100'	
673.9	669.5	10.2	54.7	EOB @ 13.55° Inc. / 88.14° Azm	
8,513.1	8,290.4	69.8	1,891.1	Drop 3° / 100'	
8,965.0	8,738.0	71.5	1,944.3	EOD @ Vertical / Build 1.5° / 100'	
9,046.6	8,819.6	71.1	1,943.5	EOB @ 1.22° Inc. / 240.00° Azm	
13,689.1	13,461.0	21.5	1,857.7	TD @ 13689.1' MD / 13461.0' TVD	