

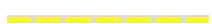



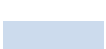
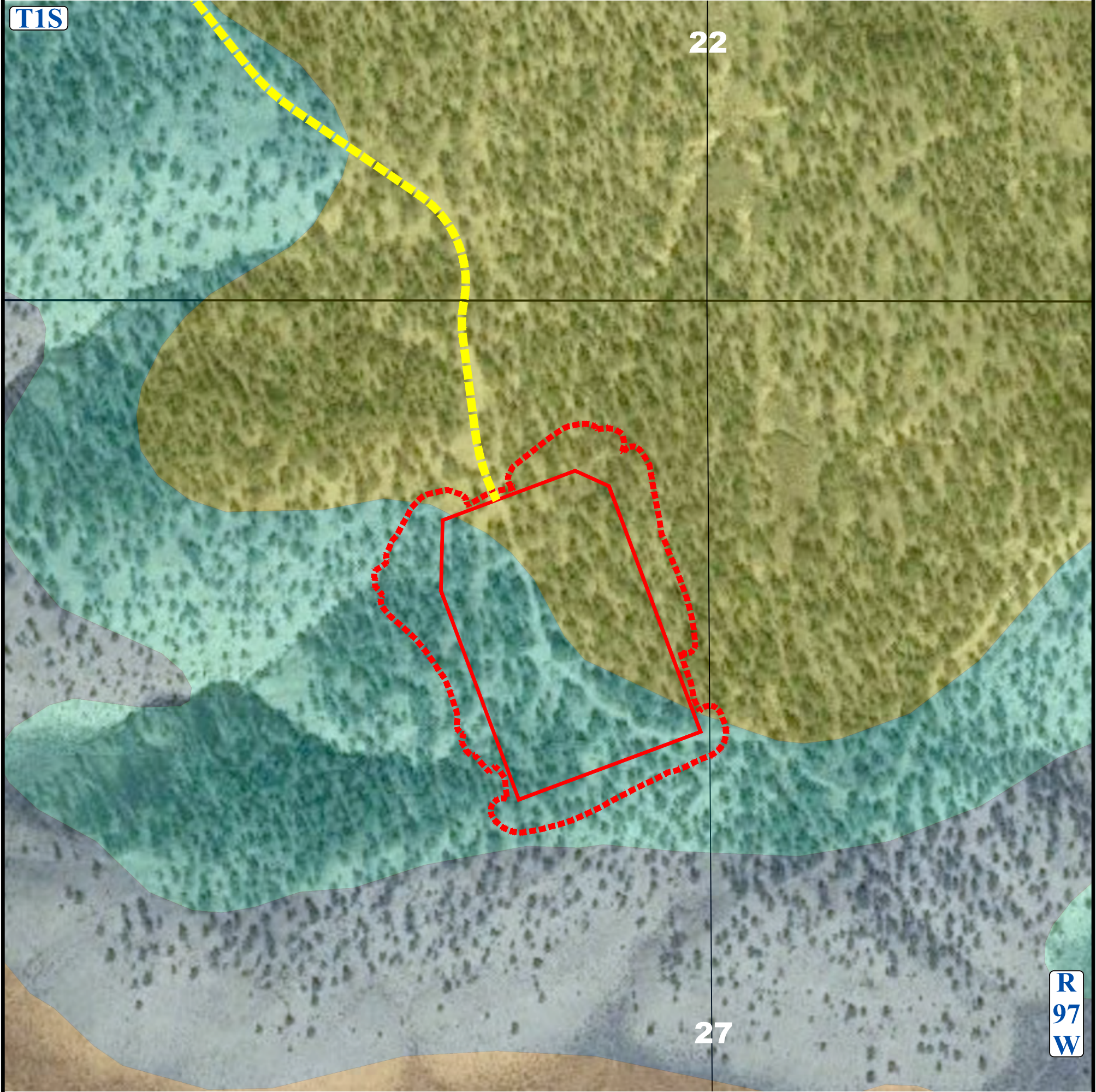


**LEGEND**

-  = OIL & GAS LOCATION
-  = WORKING PAD SURFACE
-  = PROPOSED ACCESS ROAD
-  = REDCREEK-RENTSAC COMPLEX 5 TO 30 PERCENT SLOPES (3.075 ACRES)
-  = RENTSAC CHANNERY LOAM 5 TO 50 PERCENT SLOPES (4.280 ACRES)
-  = BARUS CHANNERY LOAMY SAND 2 TO 8 PERCENT SLOPES (0.000 ACRES)
-  = TORRIORTHENTS-ROCK OUTCROP COMPLEX 15 TO 90 PERCENT SLOPES (0.000 ACRES)



REV: 3 03-15-23 T.L.L. (UPDATE ACCESS ROAD)



**Caerus Piceance LLC**

**PCU FED B27 197 PAD  
LOT 3, SECTION 27, T1S, R97W, 6th P.M.  
RIO BLANCO COUNTY, COLORADO**

|                    |               |          |              |
|--------------------|---------------|----------|--------------|
| <b>SURVEYED BY</b> | DAYTON SLAUGH | 09-20-22 | <b>SCALE</b> |
| <b>DRAWN BY</b>    | T.L.L.        | 11-16-22 | 1" = 200'    |

**SOILS SITE DIAGRAM**



**UELS, LLC**  
Corporate Office \* 85 South 200 East  
Vernal, UT 84078 \* (435) 789-1017