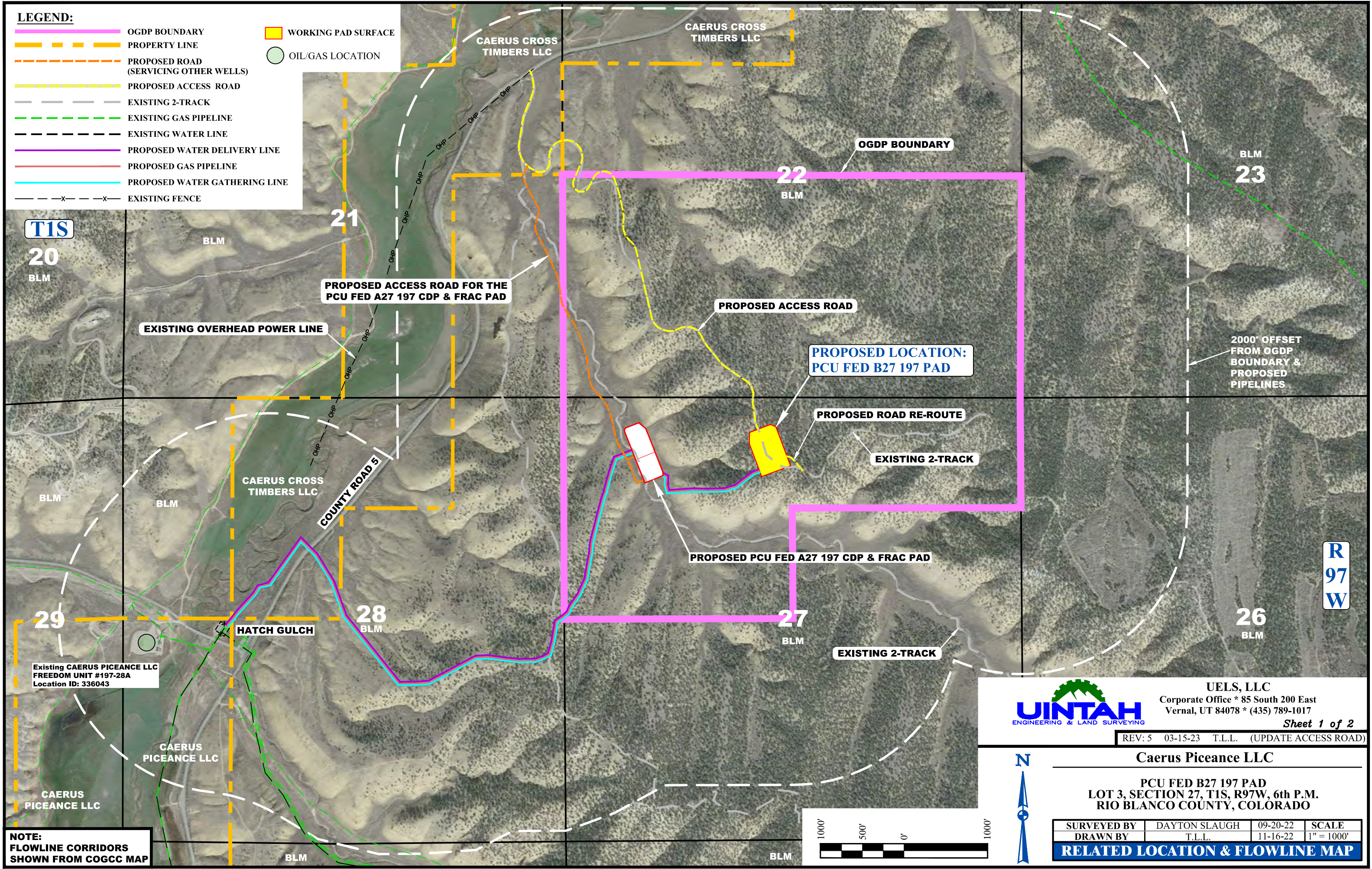


LEGEND:

- OGDG BOUNDARY
- PROPERTY LINE
- PROPOSED ROAD (SERVICING OTHER WELLS)
- PROPOSED ACCESS ROAD
- EXISTING 2-TRACK
- EXISTING GAS PIPELINE
- EXISTING WATER LINE
- PROPOSED WATER DELIVERY LINE
- PROPOSED GAS PIPELINE
- PROPOSED WATER GATHERING LINE
- EXISTING FENCE

- WORKING PAD SURFACE
- OIL/GAS LOCATION



T1S
20
BLM

21
BLM

22
BLM

23
BLM

29
BLM

28
BLM

27
BLM

26
BLM

R
97
W

Existing CAERUS PICEANCE LLC
FREEDOM UNIT #197-28A
Location ID: 336043

NOTE:
FLOWLINE CORRIDORS
SHOWN FROM COGCC MAP



UELS, LLC
Corporate Office * 85 South 200 East
Vernal, UT 84078 * (435) 789-1017

REV: 5 03-15-23 T.L.L. (UPDATE ACCESS ROAD)

Sheet 1 of 2



Caerus Piceance LLC

PCU FED B27 197 PAD
LOT 3, SECTION 27, T1S, R97W, 6th P.M.
RIO BLANCO COUNTY, COLORADO

SURVEYED BY	DAYTON SLAUGH	09-20-22	SCALE
DRAWN BY	T.L.L.	11-16-22	1" = 1000'

RELATED LOCATION & FLOWLINE MAP

ACREAGE / LENGTH TABLE

LOCATION	DESCRIPTION	LAND OWNER	FEET	R-O-W ACRES	ROW WIDTH
SECTION 27, T1S, R97W	PCU FED B27 197 PROPOSED GAS & WATER PIPELINE CORRIDOR PERMANENT R-O-W	BLM	±1,398'	±1.926	60'
SECTION 27, T1S, R97W	PCU FED B27 197 PROPOSED GAS & WATER PIPELINE CORRIDOR 10' WIDE TEMPORARY R-O-W EACH SIDE - (20' TOTAL WIDTH)	BLM	±1,398'	±0.642	20'
SECTION 27, T1S, R97W	PCU FED A27 197 CDP & FRAC PAD PROPOSED GAS & WATER PIPELINE CORRIDOR PERMANENT R-O-W	BLM	±2,240'	±3.085	60'
SECTION 27, T1S, R97W	PCU FED A27 197 PROPOSED GAS & WATER PIPELINE CORRIDOR 20' WIDE TEMPORARY R-O-W EACH SIDE - (40' TOTAL WIDTH)	BLM	±2,240'	±2.057	40'
SECTION 28, T1S, R97W	PCU FED A27 197 CDP & FRAC PAD PROPOSED GAS & WATER PIPELINE CORRIDOR PERMANENT R-O-W	BLM	±3,641'	±5.033	60'
SECTION 28, T1S, R97W	PCU FED A27 197 PROPOSED GAS & WATER PIPELINE CORRIDOR 20' WIDE TEMPORARY R-O-W EACH SIDE - (40' TOTAL WIDTH)	BLM	±3,641'	±3.399	40'
SECTION 28, T1S, R97W	PCU FED A27 197 PROPOSED GAS & WATER PIPELINE CORRIDOR (BORE)	CAERUS CROSS TIMBERS LLC	±283'	±0.650	100'
SECTION 28, T1S, R97W	PCU FED A27 197 CDP & FRAC PAD PROPOSED GAS & WATER PIPELINE CORRIDOR PERMANENT R-O-W	CAERUS CROSS TIMBERS LLC	±1,914'	±2.615	60'
SECTION 28, T1S, R97W	PCU FED A27 197 PROPOSED GAS & WATER PIPELINE CORRIDOR 20' WIDE TEMPORARY R-O-W EACH SIDE - (40' TOTAL WIDTH)	CAERUS CROSS TIMBERS LLC	±1,914'	±1.745	40'
SECTION 28, T1S, R97W	PCU FED A27 197 CDP & FRAC PAD PROPOSED GAS & WATER PIPELINE CORRIDOR PERMANENT R-O-W	CAERUS PICEANCE LLC	±90'	±0.115	60'
SECTION 28, T1S, R97W	PCU FED A27 197 PROPOSED GAS & WATER PIPELINE CORRIDOR 20' WIDE TEMPORARY R-O-W EACH SIDE - (40' TOTAL WIDTH)	CAERUS PICEANCE LLC	±90'	±0.055	40'

NOTE:

The side lines of the right-of-ways are shortened or elongated to meet the grantor's property lines.

The R-O-W acres are calculated areas using ownership parcels and section lines.

Sheet 2 of 2

REV: 5 03-23-23 T.L.L. (UPDATE TABLE)

Caerus Piceance LLC

**PCU FED B27 197 PAD
LOT 3, SECTION 27, T1S, R97W, 6th P.M.
RIO BLANCO COUNTY, COLORADO**

SURVEYED BY	DAYTON SLAUGH	09-20-22	SCALE
DRAWN BY	T.L.L.	11-22-22	NONE

RELATED LOCATION & FLOWLINE MAP TABLE



UELS, LLC
Corporate Office * 85 South 200 East
Vernal, UT 84078 * (435) 789-1017