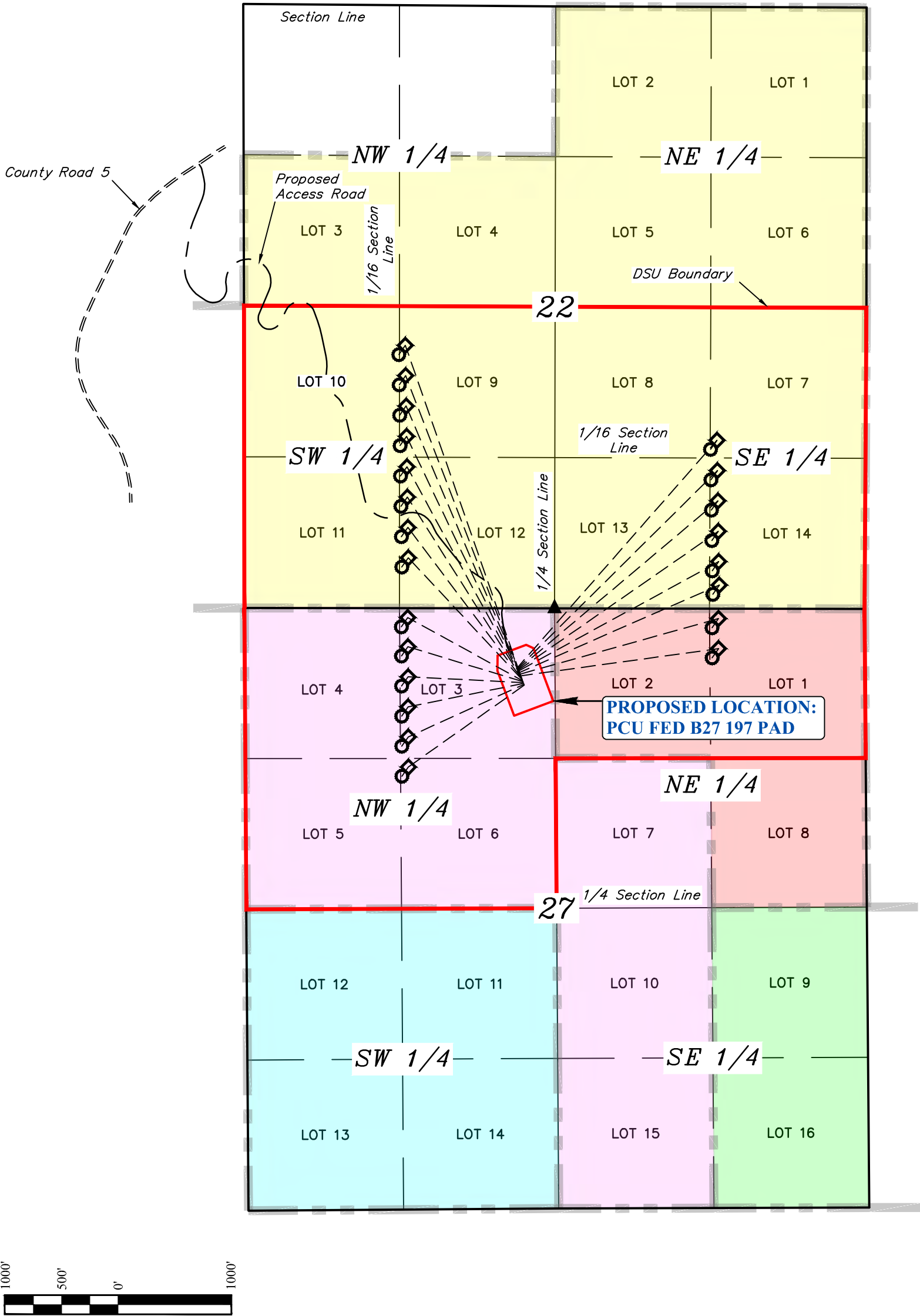


T1S, R97W, 6th P.M.



NOTE:
DSU Contains a total of 591.66 federal mineral acres.

REV: 1 03-15-23 T.L.L. (UPDATE ACCESS ROAD)

LEGEND:

- ◆ = TOP OF GAS INTERVAL.
- = TARGET BOTTOM HOLE.
- ▲ = SECTION CORNERS

- DSU BOUNDARY
- - - FEDERAL LEASE BOUNDARY

- FEDERAL MINERAL LEASE
COD 35729
- FEDERAL MINERAL LEASE
COC 61715
- FEDERAL MINERAL LEASE
COC 62563
- FEDERAL MINERAL LEASE
COD 53142
- FEDERAL MINERAL LEASE
COD 53141

N



Caerus Piceance LLC

PCU FED B27 197 PAD
LOT 3, SECTION 27, T1S, R97W, 6th P.M.
RIO BLANCO COUNTY, COLORADO

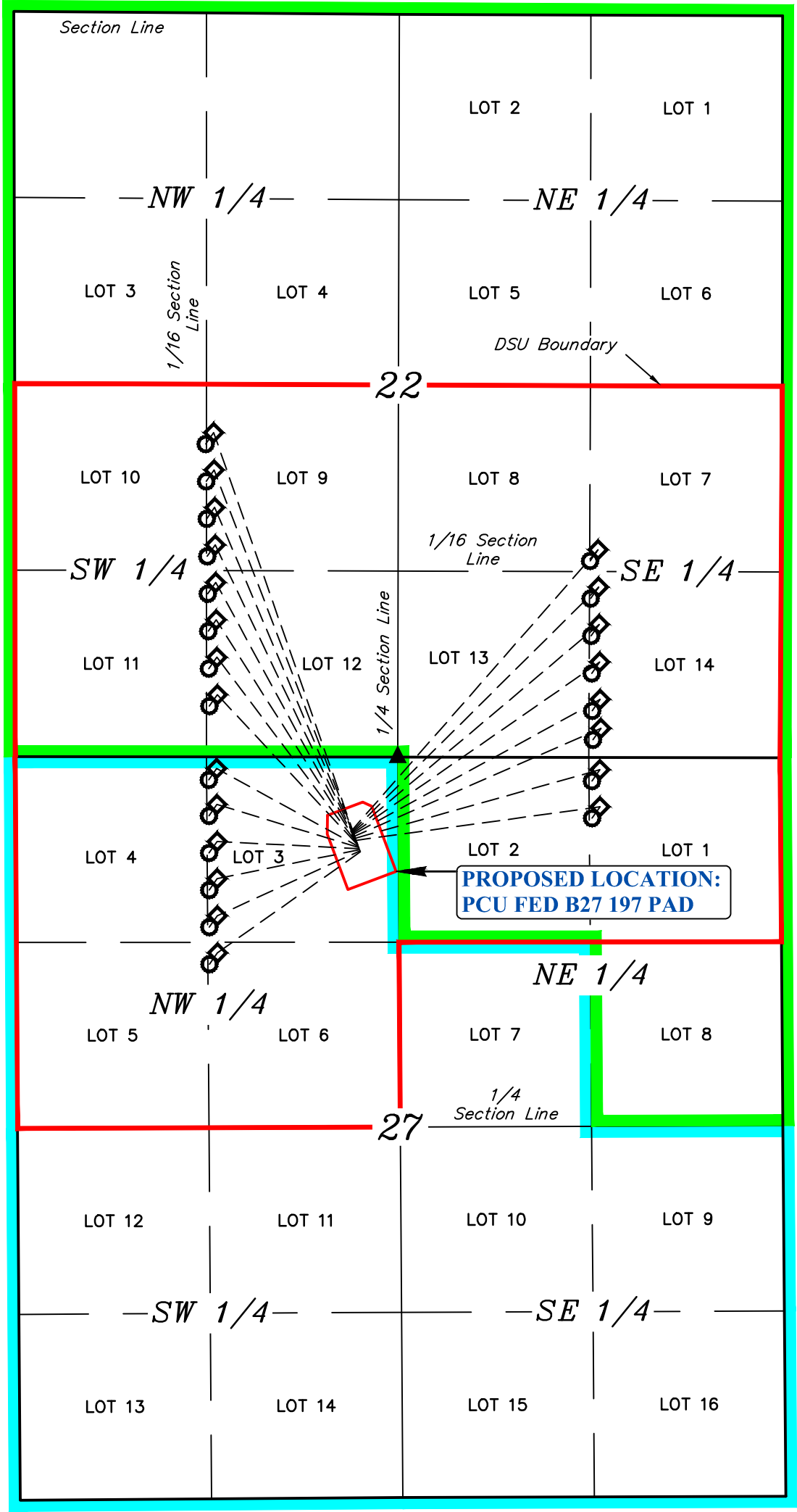
SURVEYED BY	DAYTON SLAUGH	11-18-21	SCALE
DRAWN BY	T.L.L.	11-22-22	1" = 1000'

FEDERAL LEASE DIRECTIONAL PLAT



UELS, LLC
Corporate Office * 85 South 200 East
Vernal, UT 84078 * (435) 789-1017

T1S, R97W, 6th P.M.



NOTE:
DSU Contains a total of 591.66 federal mineral acres.

REV: 1 12-07-22 T.L.L. (REMOVE FEDERAL UNIT BOUNDARY & UPDATE COLORS)

LEGEND:

- ◆ = TOP OF GAS INTERVAL.
- = TARGET BOTTOM HOLE.
- ▲ = SECTION CORNERS

- Red line: DSU BOUNDARY
- Green line: REVISED NORTH PARACHUTE UNIT COC 077039X
- Cyan line: PICEANCE CREEK UNIT COC 047666X



UELS, LLC
Corporate Office * 85 South 200 East
Vernal, UT 84078 * (435) 789-1017

N



Caerus Piceance LLC

PCU FED B27 197 PAD
LOT 3, SECTION 27, T1S, R97W, 6th P.M.
RIO BLANCO COUNTY, COLORADO

SURVEYED BY	DAYTON SLAUGH	11-18-21	SCALE
DRAWN BY	T.L.L.	11-22-22	1" = 1000'

FEDERAL UNIT BOUNDARY PLAT