

XBOLT GAMMA RAY

1in/100ft Measured Depth

Final Print

Recorded Mode

Schlumberger

Company:Verdad Resources LLC

Well:County Line 3130-04H

Field Name:Wattenberg

Country Name:United States

State Name:Colorado

County Name:Weld

Latitude:40°00'05.245"N

Longitude:104°42'12.612"W

Spud Date:02-Feb-2022

Log Interval:2391.50--17586.00(ft)

Depth Source:Driller's Depth

Log Measured From:Drill Floor

Drill Floor Elevation:5058.00(ft)

Ground Level Elevation:5037.00(ft)

Permanent Datum:Sea Level

API Number:05-123-51164

Rig Name:PD464

Rig Type:Land

Job Number:22CC00023

Print Type:Final Print

Nothing:1244379.70(ft)

Easting:3223133.62(ft)

Coordinate System:NAD83 Colorado State Plane, Northern Zone, US Feet

Disclaimer

THE USE OF AND RELIANCE UPON THIS RECORDED-DATA BY THE HEREIN NAMED COMPANY (AND ANY OF ITS AFFILIATES, PARTNERS, REPRESENTATIVES, AGENTS, CONSULTANTS AND EMPLOYEES) IS SUBJECT TO THE TERMS AND CONDITIONS AGREED UPON BETWEEN SCHLUMBERGER AND THE COMPANY, INCLUDING: (a) RESTRICTIONS ON USE OF THE RECORDED-DATA; (b) DISCLAIMERS AND WAIVERS OF WARRANTIES AND REPRESENTATIONS REGARDING COMPANY'S USE AND RELIANCE UPON THE RECORDED-DATA; AND (c) CUSTOMER'S FULL AND SOLE RESPONSIBILITY FOR ANY INFERENCE DRAWN OR DECISION MADE IN CONNECTION WITH THE USE OF THIS RECORDED-DATA.

Operational Run Summary

Notes

Run 1 (Bit Size: 8.5 in)

DateTime Log Started	03-Feb-2022 06:26:49	DateTime Log Finished	06-Feb-2022 21:07:02
Start Depth (ft)	2429	Stop Depth (ft)	17586
Mud Type	Oil Based Mud	Mud Density (lbm/gal)	9.7
Potassium (%)	0	Barite	Yes
GR Sensor Offset (ft)	24.84	Calibration Coefficient	0
DNI Sensor Offset (ft)	38.05		

Log

Description: XBOLT GAMMA RAY

Format: XBOLT_GR_DNI_VERDAD

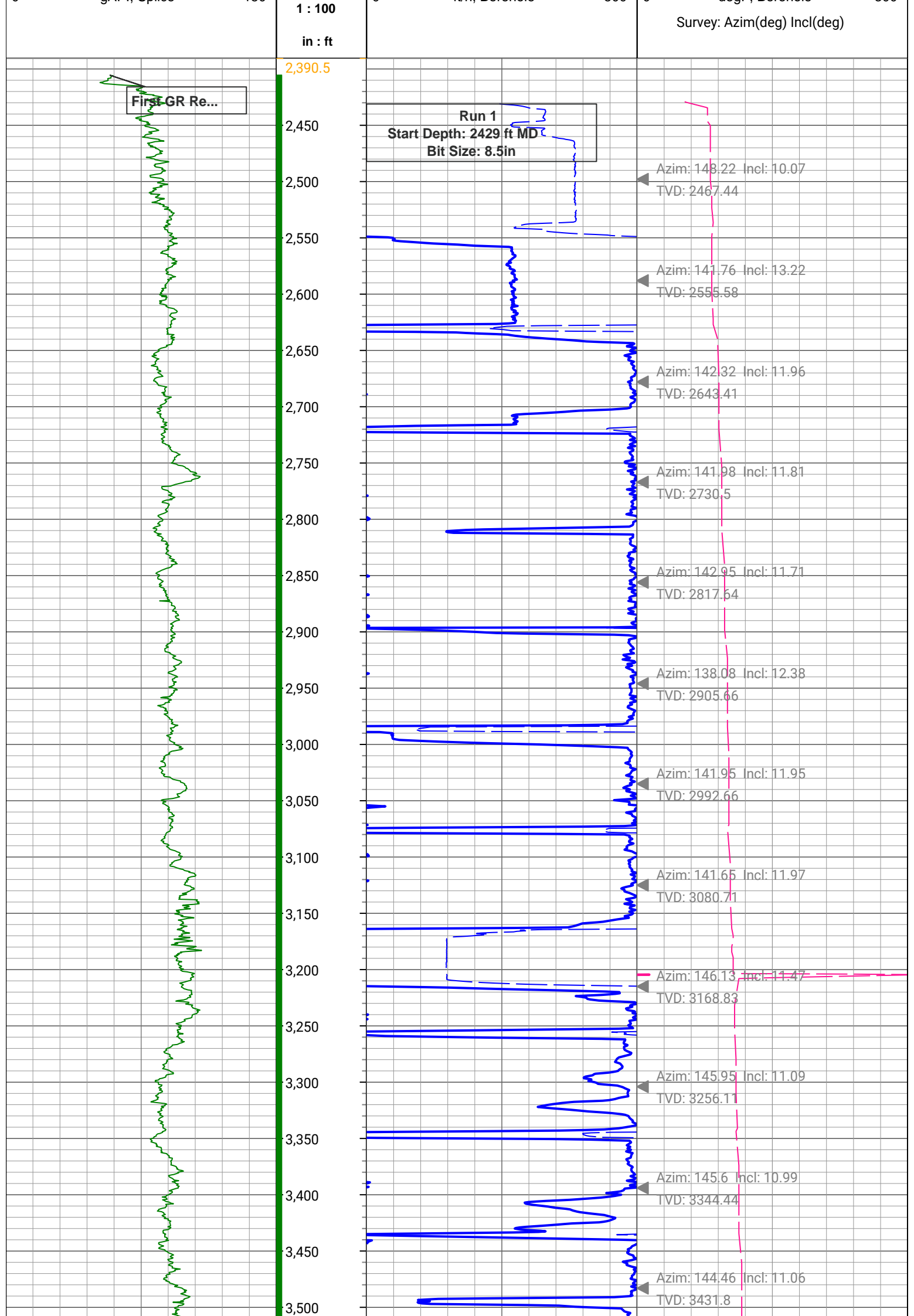
Index Scale: 1in/100ft

Index Unit: ft

Index Type: Measured Depth

Creation Date: 09-Feb-2022

GR_RM,XBOLT		Depth	ROP5_RT		TEMP_RT,XBOLT	
0	dAPI Splice150		0	ft/h Borehole500	0	degF Borehole300



GR_RM,XBOL

ROP5_RT

TEMP_RT,XBOL

Azim: 142.53 Incl: 10.95

TVD: 3520.15

Azim: 143.13 Incl: 10.82

TVD: 3607.55

Azim: 145.03 Incl: 10.9

TVD: 3695.93

Azim: 144.81 Incl: 10.99

TVD: 3784.3

Azim: 145.1 Incl: 10.87

TVD: 3871.68

Azim: 143.57 Incl: 10.98

TVD: 3960.05

Azim: 144.64 Incl: 10.93

TVD: 4047.43

Azim: 144.78 Incl: 9.02

TVD: 4136.07

Azim: 150.29 Incl: 7.63

TVD: 4224.13

Azim: 148.97 Incl: 6.19

TVD: 4313.47

Azim: 146.62 Incl: 5.3

TVD: 4402.03

Azim: 153.24 Incl: 2.27

TVD: 4491.82

Azim: 352.75 Incl: 0.11

TVD: 4580.8

GR_RM,XBOL

ROP5_RT

TEMP_RT,XBOL

Azim: 292.49 Incl: 0.05
TVD: 4670.8

Azim: 221.52 Incl: 0.05
TVD: 4759.8

Azim: 187.16 Incl: 0.03
TVD: 4848.8

Azim: 276.38 Incl: 0.02
TVD: 4938.8

Azim: 303.2 Incl: 0.02
TVD: 5027.8

Azim: 242.78 Incl: 0.06
TVD: 5117.8

Azim: 353.63 Incl: 0.1
TVD: 5206.8

Azim: 322.21 Incl: 0.35
TVD: 5295.8

Azim: 313.88 Incl: 0.1
TVD: 5385.8

Azim: 181.8 Incl: 0.01
TVD: 5563.8

Azim: 264.35 Incl: 0.02
TVD: 5650.8

Azim: 137.08 Incl: 0.03
TVD: 5740.8

GR_RM,XBOL

ROP5_RT

Azim: 121.43 Incl: 0.04
TVD: 5830.8

Azim: 96.18 Incl: 0.08
TVD: 5919.8

Azim: 75.77 Incl: 0.12
TVD: 6009.8

Azim: 66.19 Incl: 0.13
TVD: 6098.8

Azim: 180.23 Incl: 0.04
TVD: 6187.79

Azim: 318.89 Incl: 0.01
TVD: 6277.79

TEMP_RT,XBOL
Azim: 332.09 Incl: 0.07
TVD: 6366.79

Azim: 11.28 Incl: 0.1
TVD: 6456.79

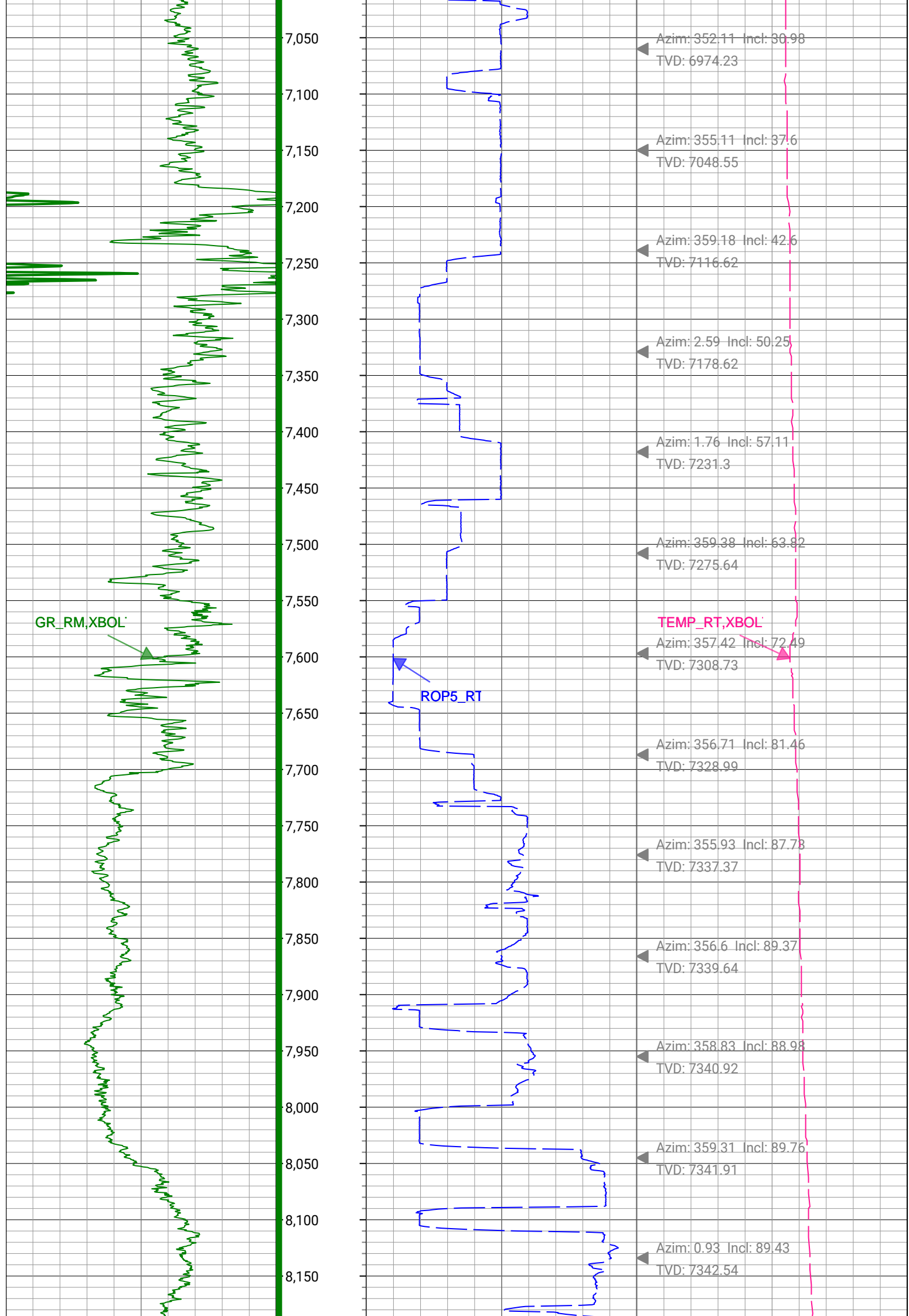
Azim: 282.5 Incl: 0.06
TVD: 6545.79

Azim: 358.41 Incl: 2.11
TVD: 6635.77

Azim: 347.8 Incl: 9.8
TVD: 6724.23

Azim: 349.53 Incl: 17.46
TVD: 6811.63

Azim: 351.29 Incl: 24.67
TVD: 6895.56



GR_RM,XBOL

ROP5_RT

TEMP_RT,XBOL

Azim: 1.32 Incl: 89.4
TVD: 7343.46

Azim: 1.65 Incl: 89.47
TVD: 7344.34

Azim: 0.64 Incl: 89.74
TVD: 7344.95

Azim: 1.29 Incl: 89.34
TVD: 7345.66

Azim: 1.54 Incl: 89.58
TVD: 7346.5

Azim: 1.71 Incl: 89.69
TVD: 7347.07

Azim: 1.72 Incl: 89.54
TVD: 7347.67

Azim: 2.24 Incl: 89.86
TVD: 7348.15

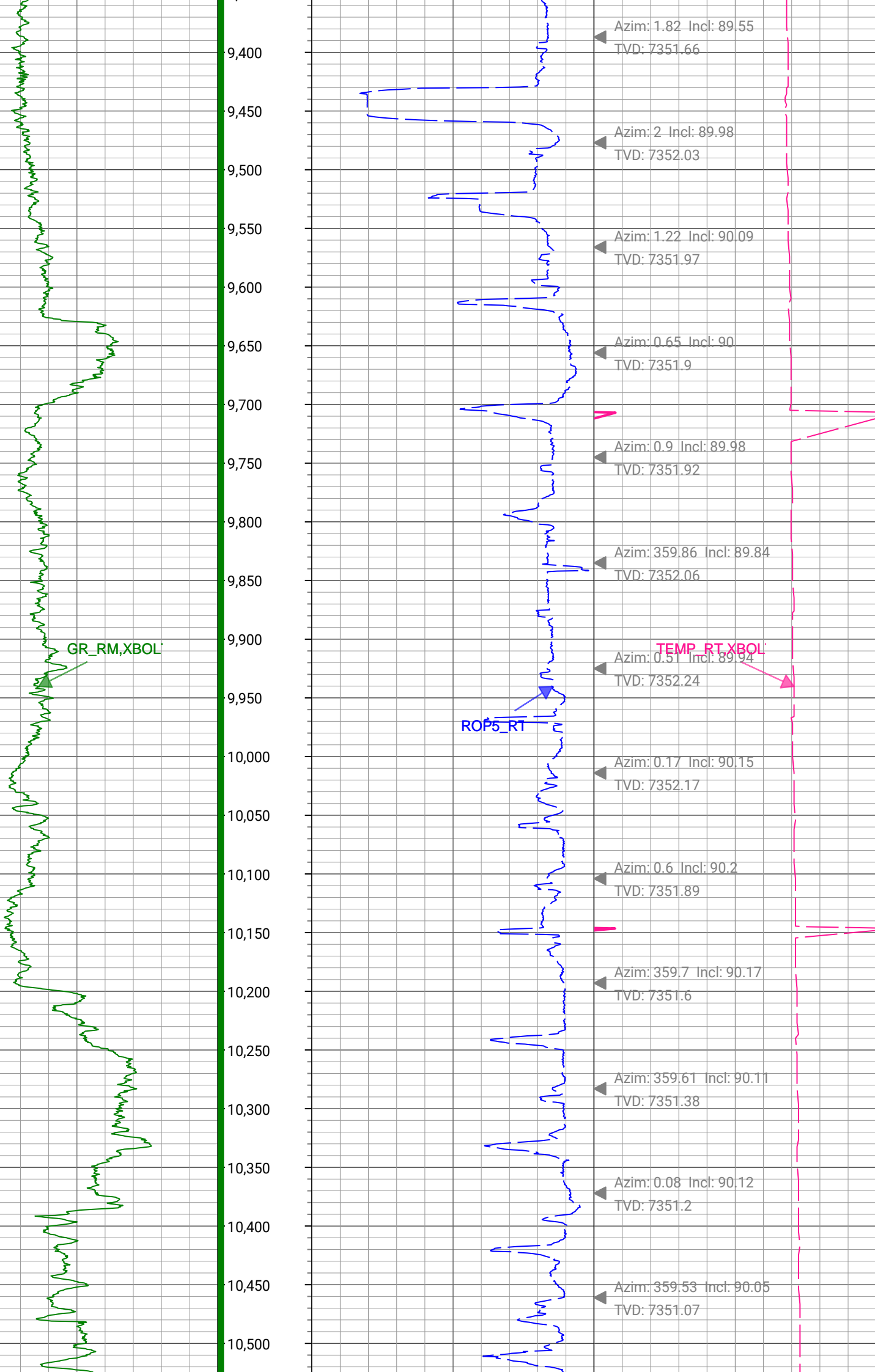
Azim: 1.82 Incl: 89.51
TVD: 7348.64

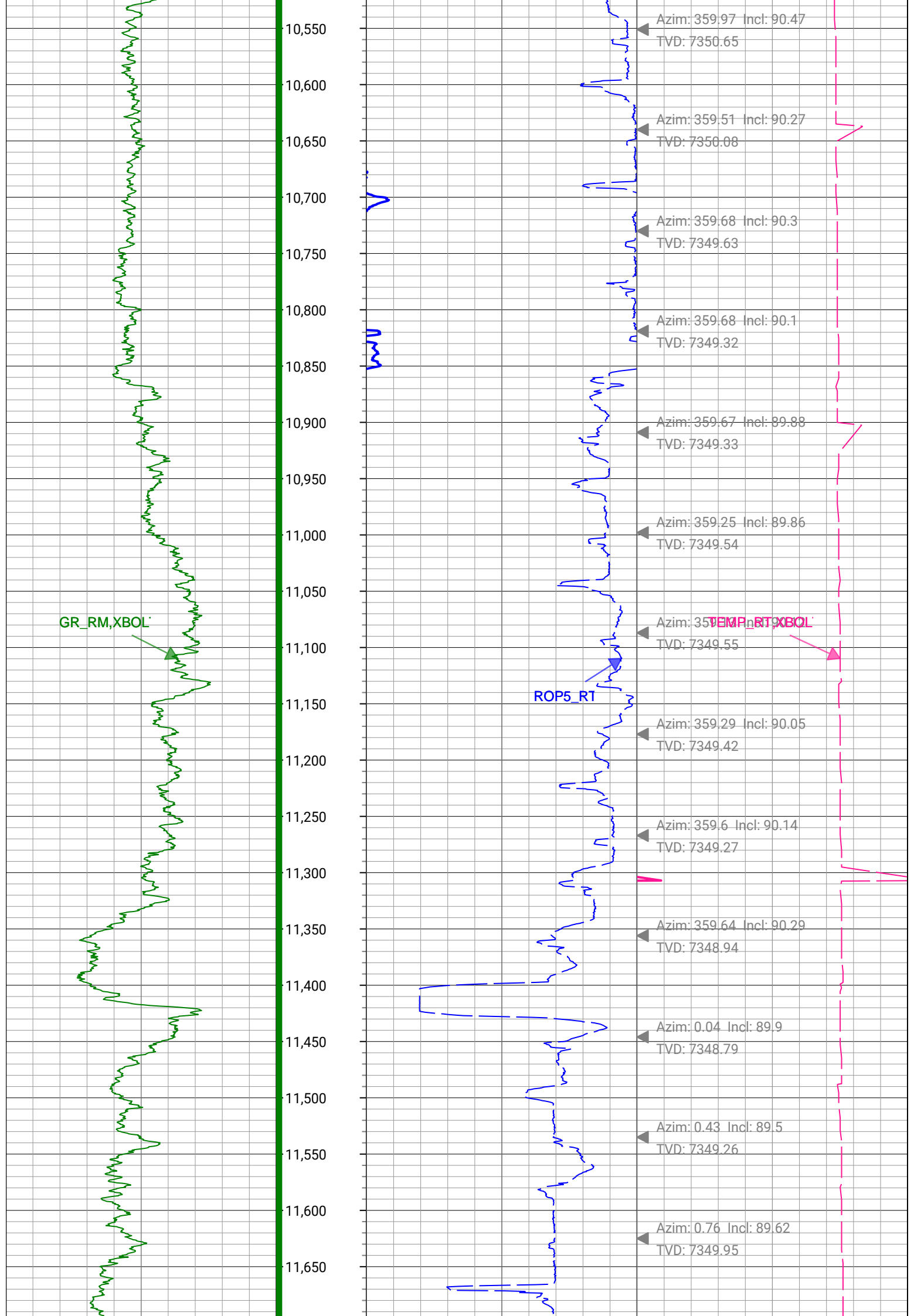
Azim: 1.5 Incl: 89.56
TVD: 7349.35

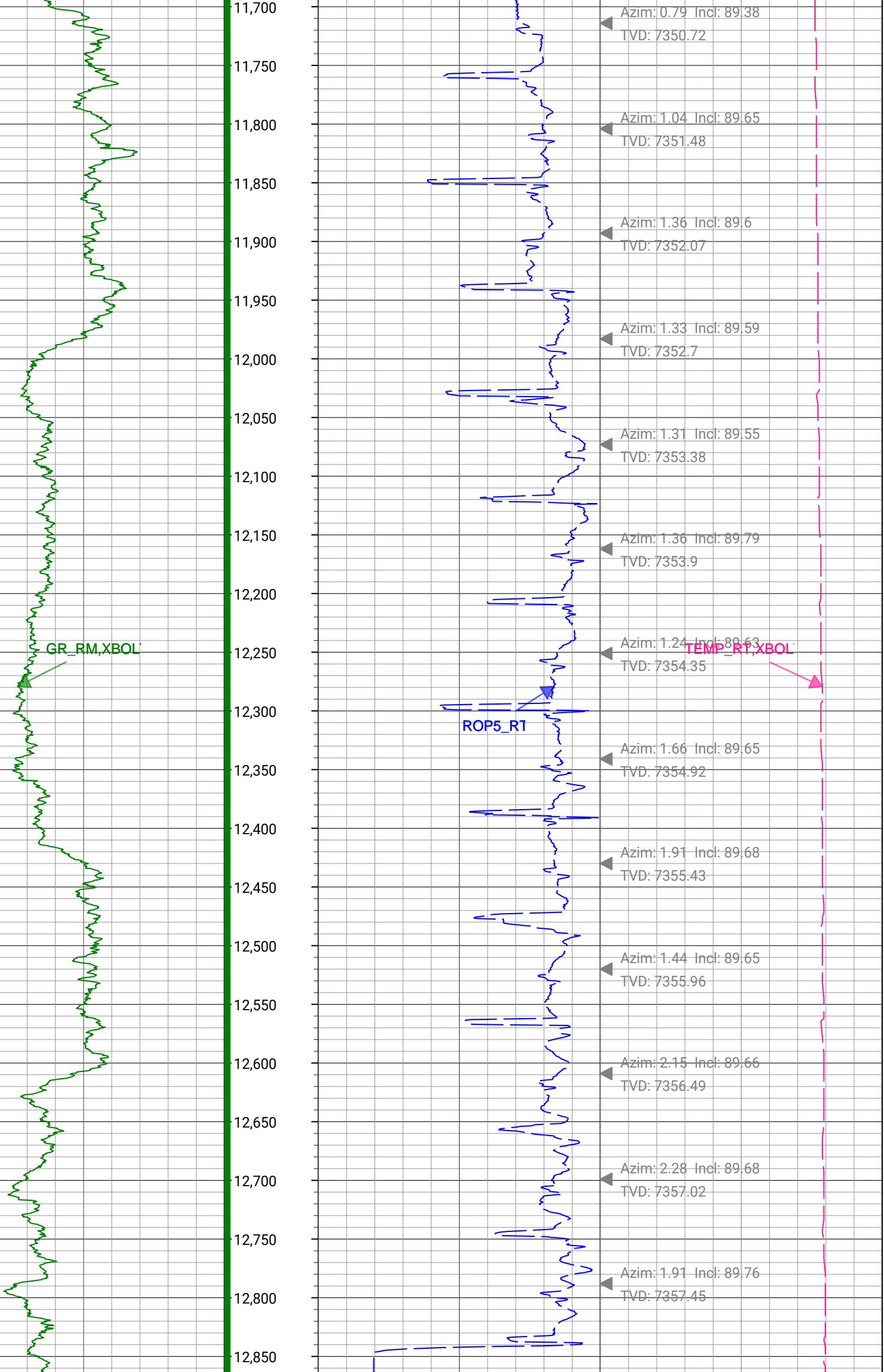
Azim: 1.85 Incl: 89.86
TVD: 7349.81

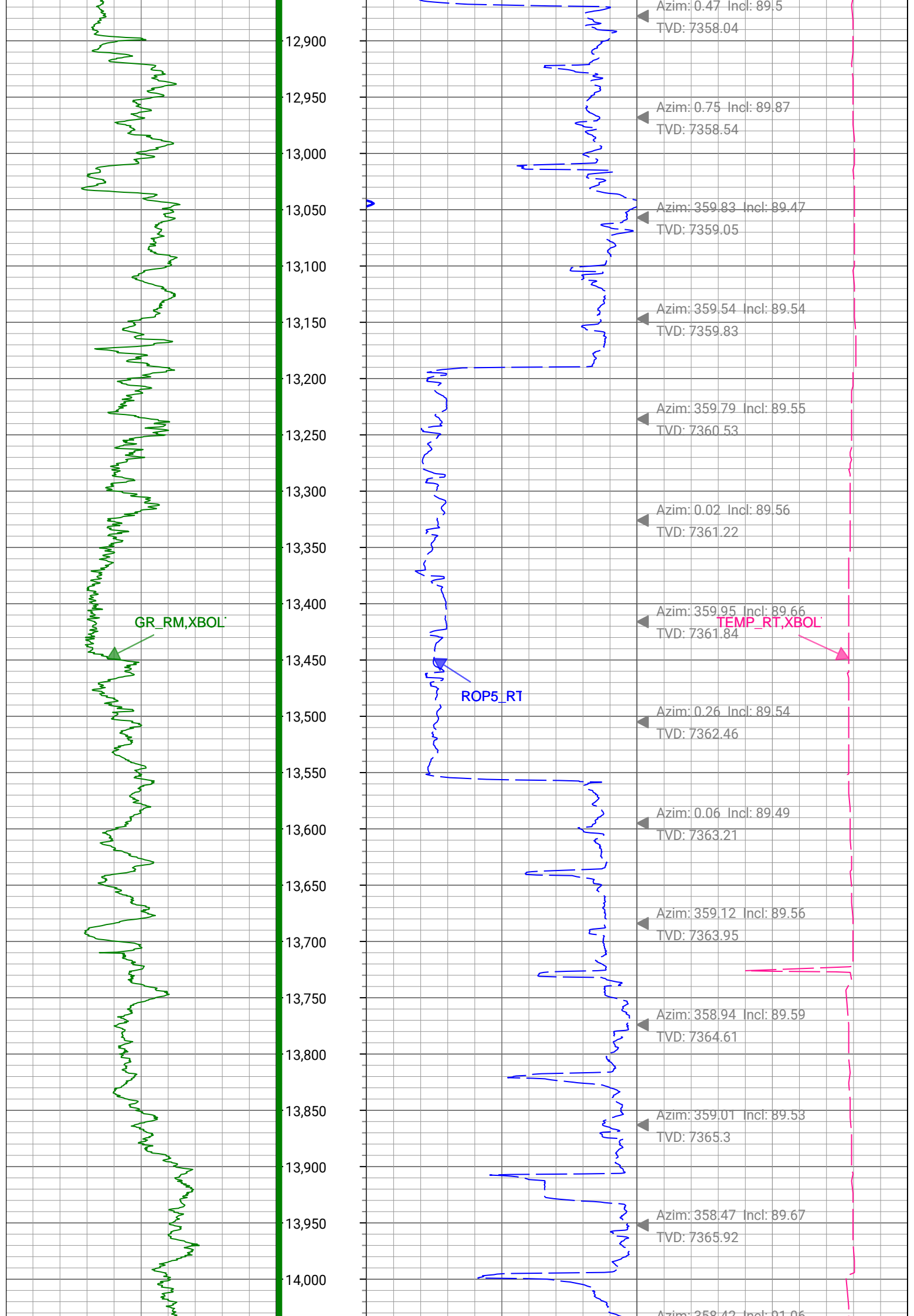
Azim: 2.22 Incl: 89.49
TVD: 7350.32

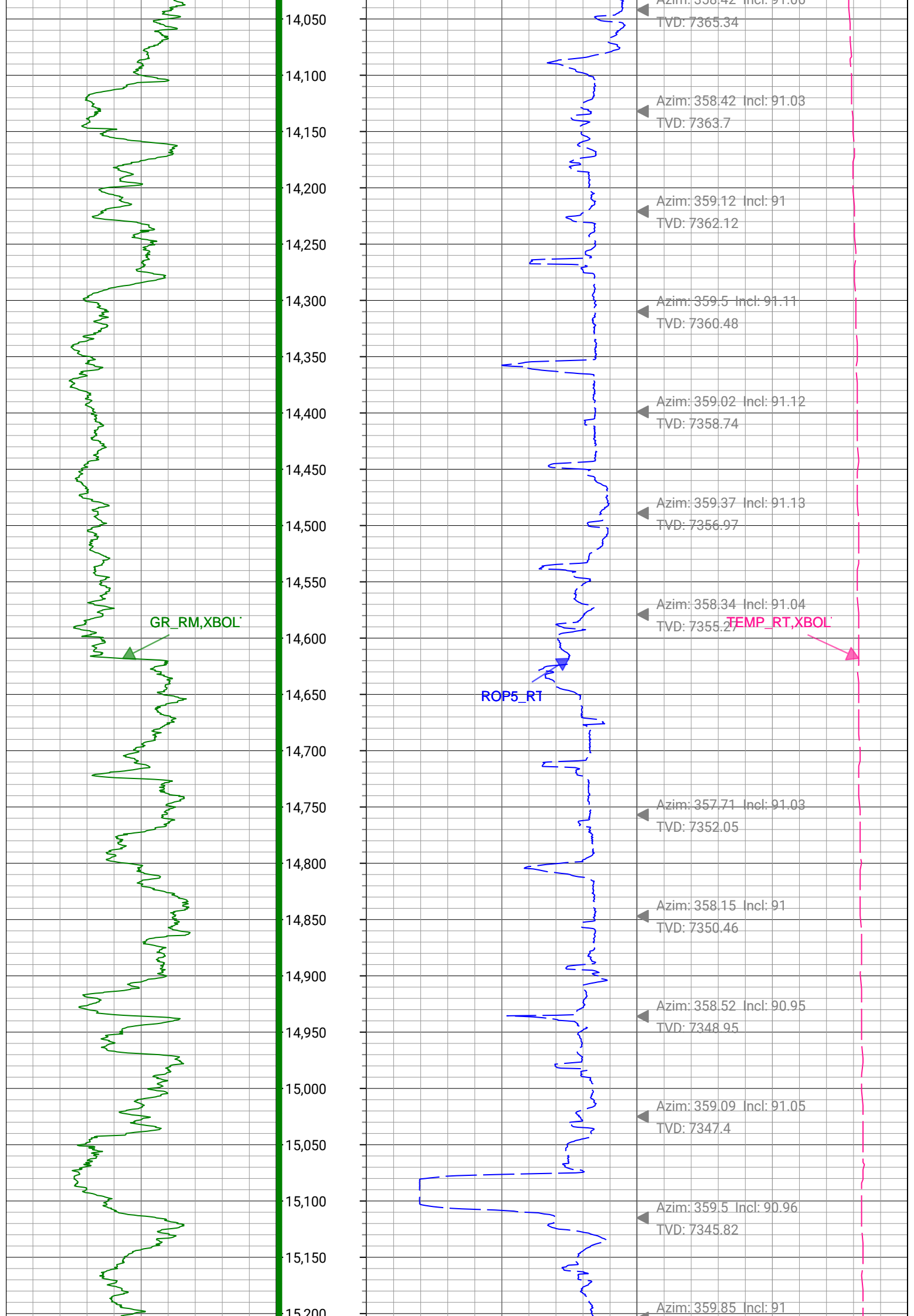
Azim: 1.99 Incl: 89.62
TVD: 7351.02

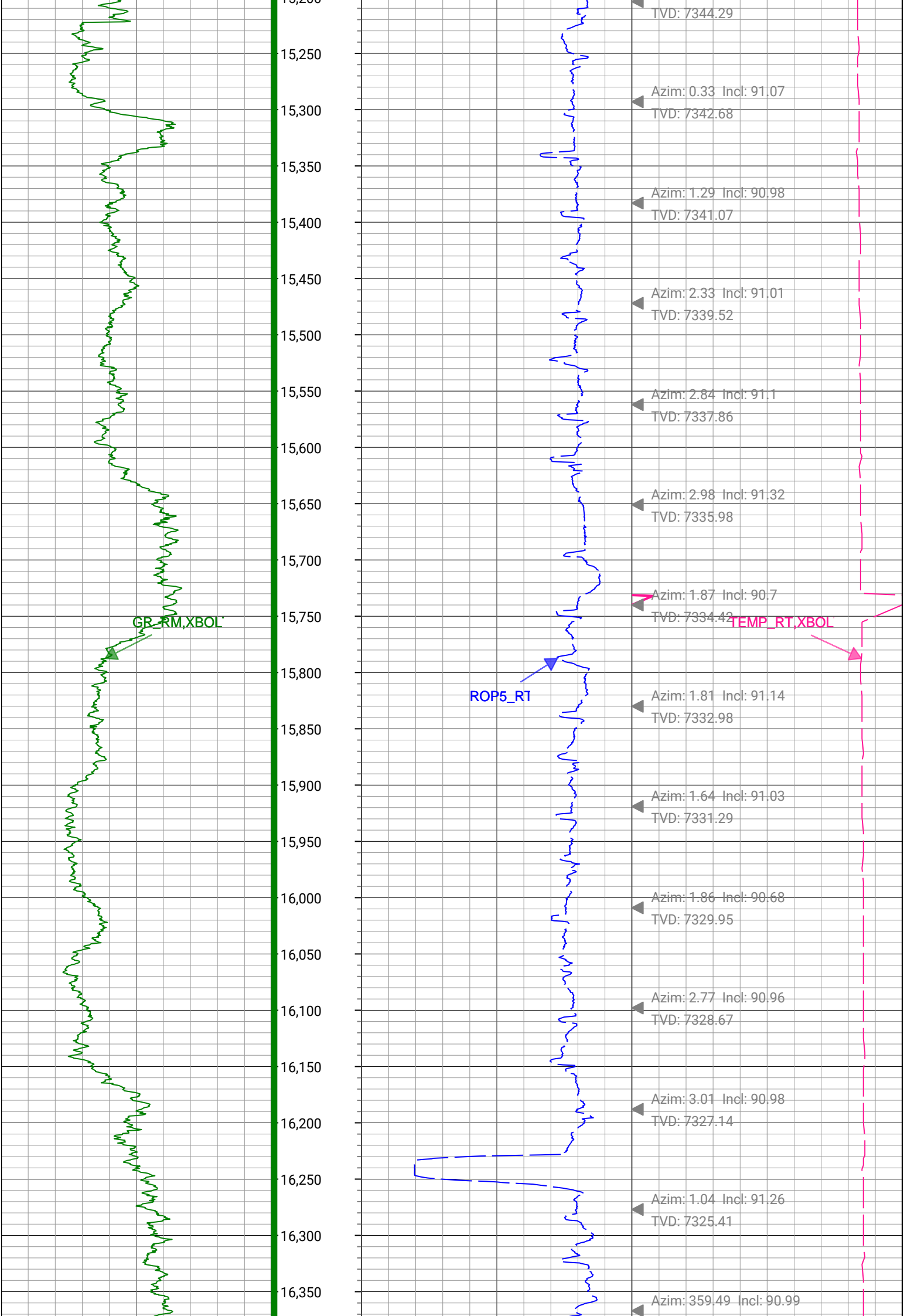


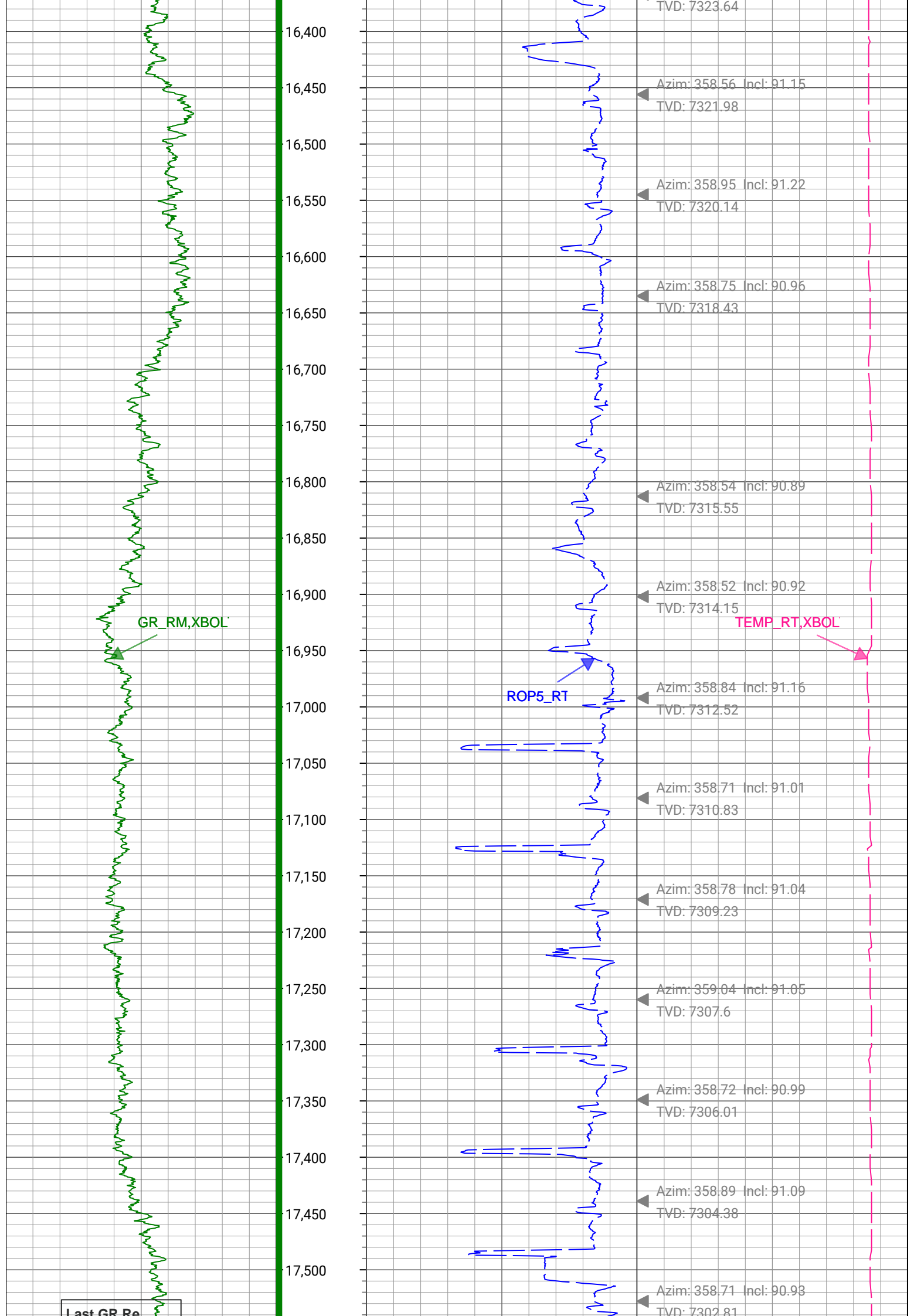












Last GR Re

<div>GR_RM,XBOLT</div> <div>gAPI, Splice</div>			<div>17,550</div> <div>17,587</div>	<div>Well Total Depth @ 17586 ...</div>	<div>Azim: 358.71 Incl: 90.93</div>					
0	GR_RM,XBOLT 150		Depth (ft)	0	ROP5_RT 500		0	TEMP_RT,XBOLT 300		
				ft/h, Borehole		degF, Borehole				
						Survey: Azim(deg) Incl(deg)				
Description: XBOLT GAMMA RAY			Format: XBOLT_GR_DNI_VERDAD		Index Scale: 1in/100ft		Index Unit: ft		Index Type: Measured Depth	
Creation Date: 09-Feb-2022										

Survey Record

Survey Calculation

North Reference: True North

Tie In Point

Measured Depth: 0(ft) Inclination: 0(deg) Azimuth: 0(deg)

True Vertical Depth: 0(ft) North Displacement: 0(ft) East Displacement: 0(ft)

D&I Inits - Run - 1

Geomagnetic Model: HDGM 2021 Geomagnetic Date: 01-Feb-2022 00:00:00

Location B: 51620.32(nT) Location G: 998.983(mgn)

Magnetic Dip: 66.228(deg) Magnetic Dec: 7.866(deg)

Total Correction: 7.866

MD(ft)	Incl(deg)	Azim(deg)	TVD(ft)	V Sec(ft)	N/-S(ft)	E/-W(ft)	DLS (deg/100ft)	Closure Distance (ft)	Closure Azimuth (deg)	Tool Type
0	0	0	0	0.00	0	0	0.00			TIP
17	0	0	17	0	0	0	0	0	0	MWD
163	0.64	210.95	163	-0.7	-0.7	-0.42	0.44	0.82	210.95	MWD
191	0.47	234	191	-0.9	-0.9	-0.59	0.99	1.08	213.34	MWD
222	0.65	233.63	221.99	-1.08	-1.08	-0.84	0.58	1.37	217.78	MWD
252	0.84	206.61	251.99	-1.38	-1.38	-1.07	1.31	1.75	217.91	MWD
283	0.99	210	282.99	-1.81	-1.81	-1.31	0.51	2.24	215.82	MWD
312	1.4	190.91	311.98	-2.38	-2.38	-1.5	1.95	2.81	212.26	MWD
342	1.78	170.64	341.97	-3.2	-3.2	-1.49	2.24	3.53	205.05	MWD
372	2.44	167.47	371.95	-4.28	-4.28	-1.28	2.23	4.47	196.65	MWD
402	2.79	157.26	401.92	-5.58	-5.58	-0.86	1.94	5.64	188.76	MWD
432	3.57	154.23	431.87	-7.09	-7.09	-0.17	2.66	7.09	181.38	MWD
462	4.66	151.68	461.79	-9	-9.01	0.81	3.68	9.04	174.84	MWD
492	5.2	148.26	491.68	-11.23	-11.23	2.11	2.05	11.43	169.38	MWD
522	5.85	145.21	521.54	-13.64	-13.65	3.69	2.38	14.14	164.85	MWD
552	6.46	145.12	551.37	-16.28	-16.29	5.53	2.03	17.2	161.24	MWD
582	6.8	144.73	581.17	-19.11	-19.12	7.52	1.14	20.55	158.52	MWD
612	7.16	142.9	610.95	-22.05	-22.06	9.68	1.41	24.09	156.32	MWD
642	7.4	141.1	640.71	-25.04	-25.06	12.02	1.1	27.79	154.38	MWD
672	7.51	137.42	670.45	-27.99	-28	14.56	1.63	31.56	152.53	MWD
702	7.77	137.46	700.19	-30.92	-30.94	17.25	0.87	35.43	150.85	MWD
732	7.67	137	729.91	-33.88	-33.9	19.99	0.39	39.36	149.47	MWD
762	7.88	136.2	759.64	-36.82	-36.85	22.78	0.79	43.32	148.28	MWD
792	8.02	136.03	789.35	-39.81	-39.84	25.66	0.47	47.38	147.22	MWD
822	8.17	136.93	819.05	-42.87	-42.9	28.56	0.65	51.54	146.34	MWD
852	8.33	139.7	848.74	-46.08	-46.12	31.43	1.43	55.81	145.73	MWD
882	8.51	141.95	878.42	-49.48	-49.52	34.2	1.25	60.18	145.37	MWD
912	8.54	142.22	908.13	-52.54	-52.58	36.88	1.27	64.15	145.15	MWD

912	8.54	142.62	908.09	-53	-53.04	36.92	0.35	64.62	145.16	MWD
942	8.94	143.12	937.74	-56.63	-56.67	39.67	1.36	69.18	145.01	MWD
972	9.51	143.37	967.35	-60.48	-60.53	42.55	1.9	73.99	144.89	MWD
1002	10.12	144.62	996.91	-64.61	-64.67	45.55	2.15	79.1	144.84	MWD
1032	10.45	145.3	1026.43	-68.99	-69.05	48.63	1.17	84.46	144.85	MWD
1062	10.73	146.04	1055.92	-73.54	-73.6	51.74	1.04	89.97	144.9	MWD
1092	10.94	145.6	1085.38	-78.2	-78.27	54.91	0.75	95.61	144.95	MWD
1122	10.79	145.2	1114.84	-82.85	-82.92	58.12	0.56	101.26	144.98	MWD
1152	10.87	145.76	1144.31	-87.49	-87.57	61.31	0.44	106.9	145	MWD
1182	11.09	145.21	1173.76	-92.2	-92.28	64.55	0.81	112.61	145.03	MWD
1212	11.02	144.63	1203.2	-96.9	-96.98	67.85	0.44	118.36	145.02	MWD
1242	10.96	142.48	1232.65	-101.5	-101.58	71.25	1.38	124.08	144.95	MWD
1272	10.88	142.44	1262.11	-106	-106.09	74.71	0.27	129.76	144.85	MWD
1302	10.84	142.5	1291.57	-110.48	-110.57	78.16	0.14	135.41	144.75	MWD
1332	10.85	142.12	1321.04	-114.94	-115.04	81.61	0.24	141.05	144.65	MWD
1362	10.26	142.21	1350.53	-119.28	-119.38	84.98	1.97	146.54	144.56	MWD
1392	9.96	143.98	1380.06	-123.48	-123.59	88.14	1.44	151.8	144.5	MWD
1422	10	144.93	1409.61	-127.71	-127.82	91.16	0.56	157	144.5	MWD
1452	9.78	143.94	1439.16	-131.9	-132.01	94.16	0.93	162.15	144.5	MWD
1482	9.88	144.84	1468.72	-136.06	-136.18	97.14	0.61	167.27	144.5	MWD
1512	9.7	144.48	1498.29	-140.21	-140.34	100.09	0.63	172.38	144.5	MWD
1542	9.65	143.78	1527.86	-144.3	-144.42	103.05	0.43	177.42	144.49	MWD
1572	10.11	143.7	1557.42	-148.44	-148.57	106.09	1.53	182.56	144.47	MWD
1602	10.41	143.95	1586.94	-152.75	-152.89	109.25	1.01	187.91	144.45	MWD
1632	10.86	143.74	1616.42	-157.22	-157.36	112.51	1.51	193.44	144.43	MWD
1662	10.71	143.6	1645.89	-161.74	-161.88	115.84	0.51	199.06	144.41	MWD
1692	10.65	143.47	1675.37	-166.21	-166.35	119.14	0.22	204.62	144.39	MWD
1722	10.93	143.9	1704.84	-170.73	-170.88	122.47	0.97	210.23	144.37	MWD
1752	11.08	143.15	1734.29	-175.33	-175.48	125.87	0.69	215.96	144.35	MWD
1782	11.23	142.76	1763.72	-179.96	-180.11	129.37	0.56	221.76	144.31	MWD
1812	11.43	142.69	1793.14	-184.64	-184.8	132.94	0.67	227.65	144.27	MWD
1842	11.37	142.64	1822.55	-189.35	-189.52	136.53	0.2	233.58	144.23	MWD
1872	11.66	142.45	1851.94	-194.1	-194.27	140.18	0.97	239.56	144.19	MWD
1902	12.05	143.69	1881.3	-199.02	-199.2	143.88	1.55	245.73	144.16	MWD
1932	11.57	144.5	1910.67	-203.99	-204.17	147.48	1.69	251.87	144.16	MWD
1962	11.31	145.22	1940.07	-208.85	-209.04	150.91	0.99	257.82	144.17	MWD
1992	11.17	145.56	1969.5	-213.66	-213.85	154.23	0.52	263.66	144.2	MWD
2022	11.35	145.15	1998.92	-218.48	-218.67	157.56	0.66	269.52	144.23	MWD
2052	10.85	144.56	2028.36	-223.2	-223.39	160.88	1.71	275.29	144.24	MWD
2082	10.33	145.36	2057.85	-227.7	-227.91	164.05	1.8	280.81	144.25	MWD
2112	10.3	146.28	2087.36	-232.15	-232.35	167.07	0.56	286.18	144.28	MWD
2142	10.55	144.83	2116.87	-236.62	-236.83	170.14	1.21	291.6	144.31	MWD
2172	10.63	145.93	2146.35	-241.15	-241.36	173.27	0.72	297.12	144.33	MWD
2202	10.39	145.37	2175.85	-245.66	-245.88	176.36	0.87	302.59	144.35	MWD
2232	9.89	145.39	2205.38	-250.01	-250.23	179.36	1.67	307.87	144.37	MWD
2262	9.89	145.61	2234.94	-254.25	-254.47	182.27	0.13	313.02	144.39	MWD
2292	9.74	145.42	2264.5	-258.46	-258.69	185.17	0.51	318.13	144.4	MWD
2322	9.9	146.03	2294.06	-262.69	-262.92	188.05	0.64	323.25	144.43	MWD
2352	9.79	145.52	2323.62	-266.92	-267.16	190.94	0.47	328.37	144.45	MWD
2364	9.78	145.48	2335.44	-268.6	-268.84	192.09	0.1	330.41	144.45	MWD


2498	10.07	148.22	2467.44	-287.93	-288.18	204.71	0.41	353.49	144.61	MWD
2588	13.22	141.76	2555.58	-302.69	-302.95	215.23	3.77	371.63	144.61	MWD
2678	11.96	142.32	2643.41	-318.14	-318.41	227.3	1.4	391.22	144.48	MWD
2767	11.81	141.98	2730.5	-332.59	-332.88	238.54	0.19	409.53	144.37	MWD
2856	11.71	142.95	2817.64	-346.96	-347.26	249.59	0.25	427.66	144.29	MWD
2946	12.38	138.08	2905.66	-361.41	-361.73	261.54	1.35	446.38	144.13	MWD
3035	11.95	141.95	2992.66	-375.76	-376.09	273.6	1.04	465.08	143.96	MWD
3125	11.97	141.65	3080.71	-390.4	-390.75	285.14	0.07	483.72	143.88	MWD
3215	11.47	146.13	3168.83	-405.14	-405.5	295.91	1.16	501.99	143.88	MWD
3304	11.09	145.95	3256.11	-419.57	-419.94	305.64	0.43	519.39	143.95	MWD
3394	10.99	145.6	3344.44	-433.81	-434.19	315.33	0.14	536.62	144.01	MWD
3483	11.06	144.46	3431.8	-447.74	-448.14	325.08	0.26	553.63	144.04	MWD
3573	10.95	142.53	3520.15	-461.53	-461.94	335.3	0.43	570.8	144.03	MWD
3662	10.82	143.13	3607.55	-474.91	-475.34	345.45	0.19	587.61	143.99	MWD
3752	10.9	145.03	3695.93	-488.63	-489.07	355.4	0.41	604.57	143.99	MWD
3842	10.99	144.81	3784.3	-502.61	-503.05	365.22	0.11	621.65	144.02	MWD
3931	10.87	145.1	3871.68	-516.41	-516.87	374.91	0.15	638.52	144.04	MWD
4021	10.98	143.57	3960.05	-530.25	-530.72	384.86	0.35	655.58	144.05	MWD
4110	10.93	144.64	4047.43	-543.94	-544.42	394.77	0.24	672.49	144.05	MWD
4200	9.02	144.78	4136.07	-556.65	-557.14	403.78	2.12	688.07	144.07	MWD
4289	7.63	150.29	4224.13	-567.47	-567.97	410.73	1.8	700.92	144.13	MWD
4379	6.19	148.97	4313.47	-576.81	-577.32	416.19	1.61	711.7	144.21	MWD
4468	5.3	146.62	4402.03	-584.34	-584.86	420.93	1.03	720.58	144.26	MWD
4558	2.27	153.24	4491.82	-589.4	-589.92	424.02	3.39	726.5	144.29	MWD
4647	0.11	352.75	4580.8	-590.89	-591.41	424.8	2.67	728.16	144.31	MWD
4737	0.05	292.49	4670.8	-590.79	-591.31	424.75	0.11	728.05	144.31	MWD
4826	0.05	221.52	4759.8	-590.81	-591.32	424.69	0.07	728.03	144.31	MWD
4915	0.03	187.16	4848.8	-590.86	-591.38	424.66	0.04	728.06	144.32	MWD
5005	0.02	276.38	4938.8	-590.88	-591.4	424.64	0.04	728.06	144.32	MWD
5094	0.02	303.2	5027.8	-590.87	-591.38	424.61	0.01	728.03	144.32	MWD
5184	0.06	242.78	5117.8	-590.88	-591.39	424.55	0.05	728.01	144.33	MWD
5273	0.1	353.63	5206.8	-590.82	-591.33	424.5	0.15	727.93	144.33	MWD
5362	0.35	322.21	5295.8	-590.52	-591.04	424.33	0.3	727.59	144.32	MWD
5452	0.1	313.88	5385.8	-590.25	-590.77	424.1	0.28	727.23	144.33	MWD
5630	0.01	181.8	5563.8	-590.15	-590.67	423.99	0.06	727.09	144.33	MWD
5717	0.02	264.35	5650.8	-590.16	-590.68	423.97	0.03	727.09	144.33	MWD
5807	0.03	137.08	5740.8	-590.18	-590.7	423.97	0.05	727.1	144.33	MWD
5897	0.04	121.43	5830.8	-590.21	-590.73	424.01	0.02	727.15	144.33	MWD
5986	0.08	96.18	5919.8	-590.24	-590.75	424.09	0.05	727.22	144.33	MWD
6076	0.12	75.77	6009.8	-590.22	-590.74	424.25	0.06	727.29	144.32	MWD
6165	0.13	66.19	6098.8	-590.15	-590.67	424.43	0.02	727.35	144.3	MWD
6254	0.04	180.23	6187.79	-590.14	-590.66	424.52	0.16	727.39	144.29	MWD
6344	0.01	318.89	6277.79	-590.17	-590.69	424.52	0.05	727.41	144.3	MWD
6433	0.07	332.09	6366.79	-590.12	-590.64	424.49	0.07	727.35	144.3	MWD
6523	0.1	11.28	6456.79	-589.99	-590.51	424.48	0.07	727.25	144.29	MWD
6612	0.06	282.5	6545.79	-589.91	-590.43	424.45	0.13	727.16	144.29	MWD
6702	2.11	358.41	6635.77	-588.24	-588.76	424.36	2.33	725.75	144.22	MWD
6791	9.8	347.8	6724.23	-579.19	-579.7	422.71	8.69	717.45	143.9	MWD
6881	17.46	349.53	6811.63	-558.4	-558.91	418.63	8.52	698.31	143.17	MWD
6971	24.67	351.29	6895.56	-526.52	-527.03	413.33	8.04	669.77	141.89	MWD

7060	30.98	352.11	6974.23	-485.44	-485.94	407.37	7.1	634.1	140.03	MWD
7150	37.6	355.11	7048.55	-435.09	-435.58	401.84	7.59	592.62	137.31	MWD
7239	42.6	359.18	7116.62	-377.87	-378.36	399.09	6.34	549.94	133.47	MWD
7329	50.25	2.59	7178.62	-312.74	-313.23	400.23	8.92	508.22	128.05	MWD
7418	57.11	1.76	7231.3	-241.12	-241.61	402.92	7.75	469.81	120.95	MWD
7508	63.82	359.38	7275.64	-162.87	-163.36	403.65	7.8	435.46	112.03	MWD
7597	72.49	357.42	7308.73	-80.38	-80.87	401.31	9.95	409.38	101.39	MWD
7687	81.46	356.71	7328.99	7.09	6.61	396.81	10	396.87	89.05	MWD
7776	87.73	355.93	7337.37	95.46	94.98	391.12	7.1	402.49	76.35	MWD
7866	89.37	356.6	7339.64	185.23	184.76	385.26	1.97	427.27	64.38	MWD
7955	88.98	358.83	7340.92	274.14	273.67	381.71	2.54	469.68	54.36	MWD
8045	89.76	359.31	7341.91	364.12	363.66	380.25	1.01	526.15	46.28	MWD
8134	89.43	0.93	7342.54	453.12	452.65	380.44	1.86	591.29	40.05	MWD
8224	89.4	1.32	7343.46	543.1	542.63	382.21	0.44	663.72	35.16	MWD
8313	89.47	1.65	7344.34	632.06	631.59	384.52	0.37	739.43	31.33	MWD
8402	89.74	0.64	7344.95	721.04	720.57	386.3	1.17	817.59	28.2	MWD
8492	89.34	1.29	7345.66	811.03	810.56	387.81	0.84	898.55	25.57	MWD
8581	89.58	1.54	7346.5	900	899.53	390.01	0.39	980.44	23.44	MWD
8671	89.69	1.71	7347.07	989.97	989.49	392.56	0.22	1064.51	21.64	MWD
8760	89.54	1.72	7347.67	1078.93	1078.45	395.22	0.18	1148.58	20.13	MWD
8850	89.86	2.24	7348.15	1168.88	1168.39	398.33	0.68	1234.42	18.83	MWD
8940	89.51	1.82	7348.64	1258.82	1258.33	401.52	0.6	1320.84	17.7	MWD
9029	89.56	1.5	7349.35	1347.78	1347.29	404.1	0.36	1406.59	16.7	MWD
9119	89.86	1.85	7349.81	1437.75	1437.25	406.74	0.51	1493.7	15.8	MWD
9208	89.49	2.22	7350.32	1526.69	1526.19	409.9	0.58	1580.28	15.03	MWD
9298	89.62	1.99	7351.02	1616.63	1616.13	413.19	0.3	1668.12	14.34	MWD
9387	89.55	1.82	7351.66	1705.59	1705.08	416.15	0.2	1755.13	13.72	MWD
9477	89.98	2	7352.03	1795.54	1795.03	419.16	0.52	1843.32	13.14	MWD
9566	90.09	1.22	7351.97	1884.51	1883.99	421.66	0.89	1930.6	12.62	MWD
9656	90	0.65	7351.9	1974.5	1973.98	423.14	0.64	2018.82	12.1	MWD
9745	89.98	0.9	7351.92	2063.49	2062.97	424.34	0.28	2106.16	11.62	MWD
9835	89.84	359.86	7352.06	2153.49	2152.97	424.94	1.17	2194.5	11.17	MWD
9925	89.94	0.51	7352.24	2243.48	2242.97	425.23	0.73	2282.92	10.73	MWD
10014	90.15	0.17	7352.17	2332.48	2331.97	425.76	0.44	2370.51	10.35	MWD
10104	90.2	0.6	7351.89	2422.48	2421.96	426.36	0.47	2459.2	9.98	MWD
10193	90.17	359.7	7351.6	2511.48	2510.96	426.6	1	2546.94	9.64	MWD
10283	90.11	359.61	7351.38	2601.48	2600.96	426.06	0.13	2635.62	9.3	MWD
10372	90.12	0.08	7351.2	2690.48	2689.96	425.82	0.53	2723.45	9	MWD
10461	90.05	359.53	7351.07	2779.47	2778.96	425.52	0.63	2811.35	8.71	MWD
10551	90.47	359.97	7350.65	2869.47	2868.95	425.13	0.68	2900.28	8.43	MWD
10640	90.27	359.51	7350.08	2958.47	2957.95	424.73	0.56	2988.29	8.17	MWD
10730	90.3	359.68	7349.63	3048.46	3047.95	424.09	0.19	3077.31	7.92	MWD
10819	90.1	359.68	7349.32	3137.46	3136.95	423.59	0.23	3165.42	7.69	MWD
10909	89.88	359.67	7349.33	3227.46	3226.94	423.08	0.25	3254.56	7.47	MWD
10998	89.86	359.25	7349.54	3316.45	3315.94	422.24	0.47	3342.72	7.26	MWD
11087	90.12	359.13	7349.55	3405.44	3404.93	420.98	0.32	3430.86	7.05	MWD
11177	90.05	359.29	7349.42	3495.43	3494.92	419.75	0.19	3520.04	6.85	MWD
11267	90.14	359.6	7349.27	3585.43	3584.92	418.88	0.36	3609.31	6.66	MWD
11356	90.29	359.64	7348.94	3674.42	3673.92	418.29	0.17	3697.65	6.5	MWD
11446	89.9	0.04	7348.79	3764.42	3763.92	418.04	0.62	3787.06	6.34	MWD

11535	89.5	0.43	7349.26	3853.42	3852.91	418.4	0.63	3875.56	6.2	MWD
11625	89.62	0.76	7349.95	3943.41	3942.9	419.34	0.39	3965.14	6.07	MWD
11714	89.38	0.79	7350.72	4032.4	4031.89	420.55	0.27	4053.77	5.95	MWD
11804	89.65	1.04	7351.48	4122.39	4121.88	421.99	0.4	4143.42	5.85	MWD
11893	89.6	1.36	7352.07	4211.37	4210.86	423.85	0.37	4232.14	5.75	MWD
11983	89.59	1.33	7352.7	4301.35	4300.83	425.96	0.04	4321.87	5.66	MWD
12073	89.55	1.31	7353.38	4391.32	4390.8	428.03	0.05	4411.62	5.57	MWD
12162	89.79	1.36	7353.9	4480.3	4479.78	430.1	0.28	4500.38	5.48	MWD
12251	89.63	1.24	7354.35	4569.28	4568.75	432.12	0.22	4589.14	5.4	MWD
12341	89.65	1.66	7354.92	4659.25	4658.72	434.4	0.47	4678.93	5.33	MWD
12430	89.68	1.91	7355.43	4748.21	4747.68	437.18	0.28	4767.76	5.26	MWD
12520	89.65	1.44	7355.96	4838.17	4837.64	439.81	0.53	4857.59	5.19	MWD
12609	89.66	2.15	7356.49	4927.13	4926.59	442.59	0.81	4946.43	5.13	MWD
12699	89.68	2.28	7357.02	5017.06	5016.52	446.07	0.14	5036.32	5.08	MWD
12788	89.76	1.91	7357.45	5106.01	5105.46	449.32	0.43	5125.2	5.03	MWD
12878	89.5	0.47	7358.04	5195.99	5195.44	451.19	1.63	5214.99	4.96	MWD
12968	89.87	0.75	7358.54	5285.98	5285.43	452.15	0.52	5304.74	4.89	MWD
13057	89.47	359.83	7359.05	5374.98	5374.43	452.6	1.13	5393.45	4.81	MWD
13147	89.54	359.54	7359.83	5464.97	5464.42	452.1	0.33	5483.09	4.73	MWD
13236	89.55	359.79	7360.53	5553.97	5553.42	451.58	0.28	5571.75	4.65	MWD
13326	89.56	0.02	7361.22	5643.96	5643.42	451.43	0.26	5661.44	4.57	MWD
13416	89.66	359.95	7361.84	5733.96	5733.41	451.4	0.13	5751.16	4.5	MWD
13505	89.54	0.26	7362.46	5822.96	5822.41	451.57	0.37	5839.9	4.43	MWD
13595	89.49	0.06	7363.21	5912.96	5912.41	451.82	0.23	5929.65	4.37	MWD
13684	89.56	359.12	7363.95	6001.95	6001.4	451.18	1.06	6018.34	4.3	MWD
13774	89.59	358.94	7364.61	6091.93	6091.39	449.65	0.21	6107.96	4.22	MWD
13863	89.53	359.01	7365.3	6180.91	6180.37	448.05	0.11	6196.59	4.15	MWD
13952	89.67	358.47	7365.92	6269.89	6269.35	446.09	0.63	6285.2	4.07	MWD
14042	91.06	358.42	7365.34	6359.85	6359.31	443.65	1.55	6374.76	3.99	MWD
14132	91.03	358.42	7363.7	6449.79	6449.26	441.17	0.04	6464.33	3.91	MWD
14221	91	359.12	7362.12	6538.76	6538.22	439.26	0.79	6552.96	3.84	MWD
14310	91.11	359.5	7360.48	6627.73	6627.2	438.19	0.45	6641.67	3.78	MWD
14399	91.12	359.02	7358.74	6716.71	6716.18	437.05	0.55	6730.38	3.72	MWD
14489	91.13	359.37	7356.97	6806.68	6806.15	435.78	0.39	6820.09	3.66	MWD
14579	91.04	358.34	7355.27	6896.64	6896.12	433.98	1.15	6909.76	3.6	MWD
14757	91.03	357.71	7352.05	7074.5	7073.98	427.85	0.35	7086.91	3.46	MWD
14847	91	358.15	7350.46	7164.42	7163.91	424.6	0.48	7176.48	3.39	MWD
14936	90.95	358.52	7348.95	7253.37	7252.86	422.02	0.43	7265.12	3.33	MWD
15025	91.05	359.09	7347.4	7342.33	7341.82	420.17	0.64	7353.84	3.28	MWD
15115	90.96	359.5	7345.82	7432.31	7431.8	419.06	0.47	7443.61	3.23	MWD
15204	91	359.85	7344.29	7521.29	7520.79	418.55	0.39	7532.43	3.19	MWD
15293	91.07	0.33	7342.68	7610.28	7609.77	418.69	0.55	7621.28	3.15	MWD
15383	90.98	1.29	7341.07	7700.26	7699.75	419.97	1.07	7711.19	3.12	MWD
15472	91.01	2.33	7339.52	7789.2	7788.69	422.78	1.17	7800.16	3.11	MWD
15562	91.1	2.84	7337.86	7879.1	7878.58	426.83	0.58	7890.14	3.1	MWD
15651	91.32	2.98	7335.98	7967.97	7967.45	431.35	0.29	7979.12	3.1	MWD
15740	90.7	1.87	7334.42	8056.88	8056.35	435.12	1.43	8068.09	3.09	MWD
15830	91.14	1.81	7332.98	8146.82	8146.29	438.01	0.5	8158.06	3.08	MWD
15919	91.03	1.64	7331.29	8235.77	8235.24	440.69	0.22	8247.02	3.06	MWD
16008	89.68	1.86	7329.95	8325.73	8325.19	443.44	0.46	8336.93	3.05	MWD

16009	90.68	1.86	7329.95	8325.72	8325.19	443.44	0.46	8336.99	3.05	MWD
16098	90.96	2.77	7328.67	8414.64	8414.1	447.03	1.08	8425.97	3.04	MWD
16188	90.98	3.01	7327.14	8504.52	8503.98	451.57	0.27	8515.96	3.04	MWD
16277	91.26	1.04	7325.41	8593.45	8592.9	454.71	2.24	8604.92	3.03	MWD
16367	90.99	359.49	7323.64	8683.43	8682.88	455.12	1.74	8694.8	3	MWD
16456	91.15	358.56	7321.98	8772.4	8771.85	453.6	1.06	8783.57	2.96	MWD
16545	91.22	358.95	7320.14	8861.35	8860.81	451.67	0.44	8872.31	2.92	MWD
16635	90.96	358.75	7318.43	8951.32	8950.77	449.86	0.36	8962.07	2.88	MWD
16813	90.89	358.54	7315.55	9129.24	9128.7	445.65	0.13	9139.57	2.79	MWD
16902	90.92	358.52	7314.15	9218.19	9217.66	443.36	0.05	9228.32	2.75	MWD
16992	91.16	358.84	7312.52	9308.15	9307.62	441.28	0.45	9318.08	2.71	MWD
17081	91.01	358.71	7310.83	9397.11	9396.58	439.38	0.22	9406.85	2.68	MWD
17171	91.04	358.78	7309.23	9487.08	9486.55	437.41	0.09	9496.63	2.64	MWD
17260	91.05	359.04	7307.6	9576.04	9575.52	435.72	0.29	9585.43	2.61	MWD
17349	90.99	358.72	7306.01	9665.01	9664.49	433.98	0.36	9674.23	2.57	MWD
17439	91.09	358.89	7304.38	9754.97	9754.45	432.11	0.22	9764.02	2.54	MWD
17528	90.93	358.71	7302.81	9843.94	9843.42	430.25	0.27	9852.82	2.5	MWD
17586	90.93	358.71	7301.87	9901.91	9901.4	428.94	0	9910.68	2.48	Manual

Company:	Verdad Resources LLC
Well:	County Line 3130-04H
Field Name:	Wattenberg
Country Name:	United States
State Name:	Colorado
County Name:	Weld



XBOLT GAMMA RAY

1in/100ft Measured Depth

Final Print

Recorded Mode