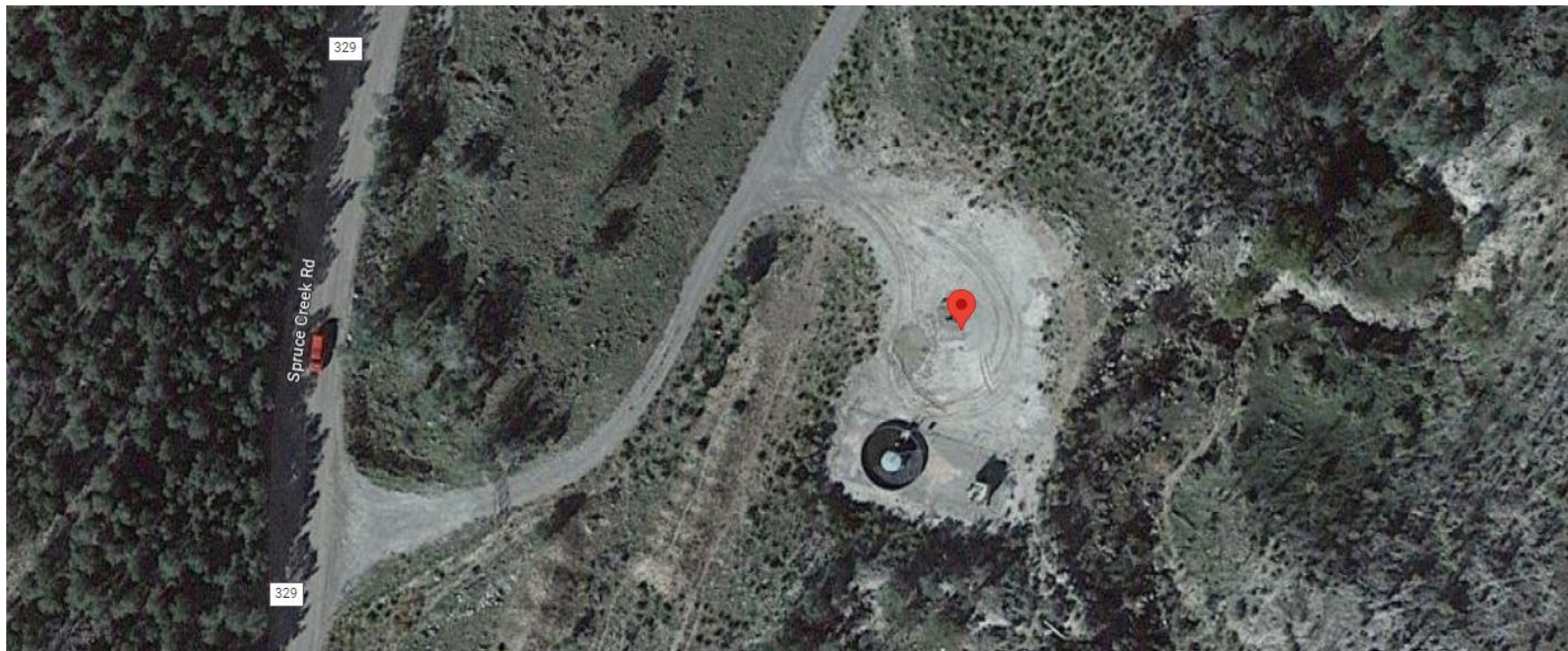


Storm Water Management and Erosion control
Location Name: TEP Rocky Mountain LLC MACKLEY RMV 85-34 Pad
Location # 324015



**Location Overview: Location is within High
Priority/NSO/Density/Black Bear Habitat areas. Location is
approximately 21 yards from Spruce Creek.
Section/Township/Range: 34 6S94W**

Storm water Management and Erosion control
Location Name: TEP Rocky Mountain LLC MACKLEY RMV 85-34 Pad
Location # 324015



North West corner of location.



North East corner of location.



South West corner of location.



South East corner of location.