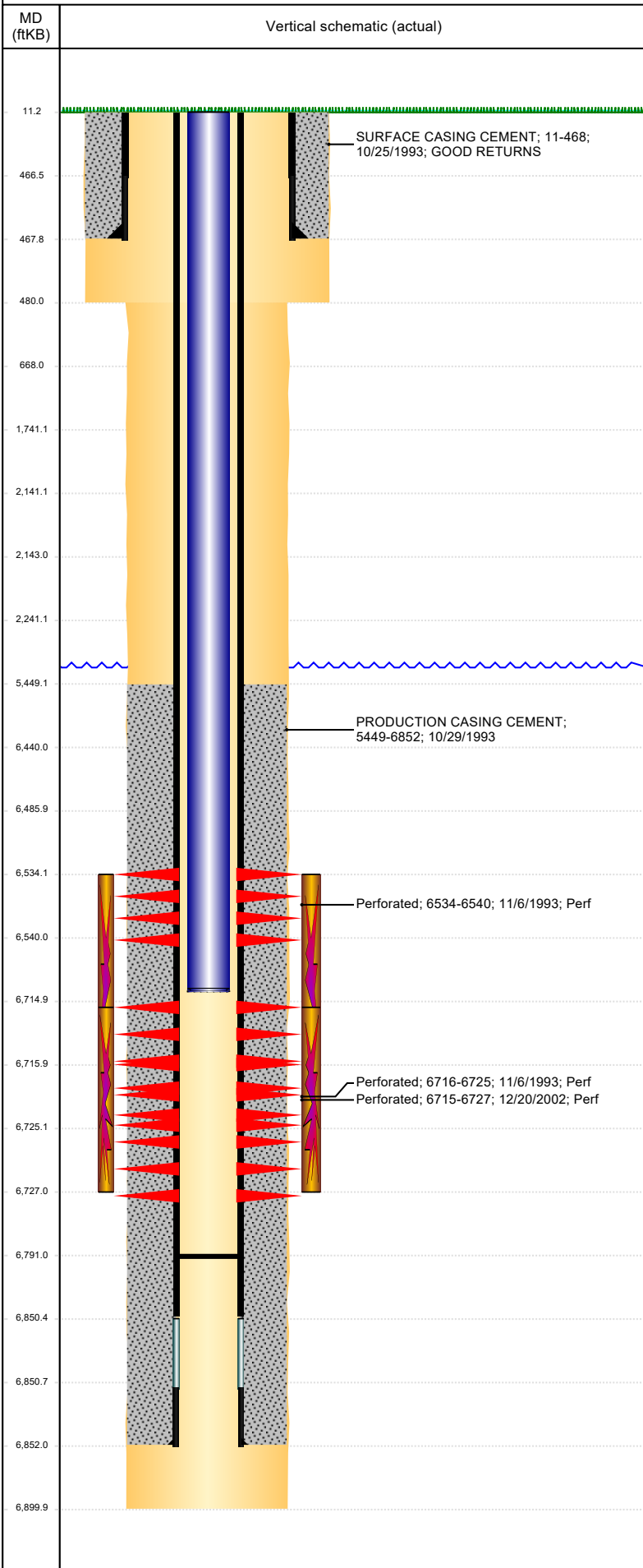




P&A Wellbore For State

Well Name: WATKINS 12-11

Land, Original Hole, 10/12/2023 1:38:52 PM



Well Header									
Surface UWI 0512317531		Business Unit Rockies		Gov Auth Dist		Prod Tree Loc Land			
Orig. KB to Gnd (ft) 11.00		Original Spud Date 10/25/1993		Abandon Date		Well Sub-Status PR		High Pres N	
Comment frac'd into 1/04 by Millage 22-12 LIMITED ENTRY TWO DIFFERENT PRODUCTION CASING GRADES USED CASING 3 1/2 M-75 AND 3 1/2 B-70									
Surface Location (Congressional)									
Quarter 3 NE	Quarter 4 SW	Section 12	Township 4	Twnshp N N	Range 64	Rng E/W W	Latitude (°) 40.325595389	Longitude (°) -104.500660526	
Wellbore Sections									
Section Des		Hole Size (in)		Act Top (ftKB)		Act Btm (ftKB)			
SURFACE		12 1/4		11.0		480.0			
PRODUCTION		7 7/8		480.0		6,900.0			
Casing Strings									
Csg Des		Run Date		OD (in)	Wt/Len (lb/ft)	Grade	Top Depth (MD) (ftKB)	Set Depth (MD) (ftKB)	
Surface		10/25/1993		8 5/8	24.00	M-50	11	468	
Production Casing		10/29/1993		3 1/2	7.70	M-75	11	6852	
Cement									
Des				Start Date		Top (ftKB)		Btm (ftKB)	
SURFACE CASING CEMENT				10/25/1993		11.0		468.0	
PRODUCTION CASING CEMENT				10/29/1993		5,449.0		6,852.0	
Zone Statuses									
Zone Name	Status Date	Status	Fluid Type	Job			Prod Method		
NIOBRARA-CODELL	12/6/1993	PR		DRILLING/COMPLETION - ORIGINAL, 10/25/1993 00:00			Flowing		
NIOBRARA	12/6/1993	PR		DRILLING/COMPLETION - ORIGINAL, 10/25/1993 00:00			Flowing		
CODELL	12/31/2002	PR		RE-FRAC, 12/18/2002 00:00			Flowing		
Perforation Data									
Linked Zone		Explosive Type	Entered Shot Total	Top (ftKB)		Btm (ftKB)		Date	
NIOBRARA, Original Hole			15	6,534.0		6,540.0		11/6/1993	
CODELL, Original Hole			48	6,715.0		6,727.0		12/20/2002	
CODELL, Original Hole				6,716.0		6,725.0		11/6/1993	
Stimulation Intervals									
Zone			Start Date		Top (ftKB)		Btm (ftKB)		
NIOBRARA-CODELL, Original Hole			11/12/1993		6,534.0		6,725.0		
CODELL, Original Hole			12/27/2002		6,715.0		6,727.0		
Other In Hole									
Run Date		Des		Make		OD (in)	Top (ftKB)	Btm (ftKB)	
Logs									
Date		Type				Depth Top (MD) (ftKB)	Btm (ftKB)		
10/30/1993		COMPENSATED DENSITY				4,110	6,894.0		
10/30/1993		INDUCTION				468	6,894.0		
11/6/1993		CEMENT BOND				6,350	6,791.0		
Plug Back Total Depths									
Date		Type		Com			PBTD (ftKB)		
11/6/1993		FILL		DEPTH LOGGER ON CBL			6,792		
12/30/2002		FILL		TAG @ 6791'			6,791		