

NOBLE ENERGY, INC

Location: COLORADO Slot: SLOT#01 BISHOP A08-685 (860'FNL & 439'FEL,SEC.07)
 Field: WELD COUNTY (NOBLE NAD 83 GRID) Well: BISHOP A08-685
 Facility: SEC.07-T06N-R64W Wellbore: BISHOP A08-685 PWB

Plot reference wellpath is BISHOP A08-685 (REV-C.0) PWP
 True vertical depths are referenced to RIG (4741'GL+30'KB = 4771'RKB) (RKB)
 Reference wellpath measured depths are referenced to RIG (4741'GL+30'KB = 4771'RKB) (RKB)
 RIG (4741'GL+30'KB = 4771'RKB) (RKB) to Mean Sea Level: 4771 feet
 Mean Sea Level to Ground level (At Slot: SLOT#01 BISHOP A08-685 (860'FNL & 439'FEL,SEC.07)): 0 feet
 Offset wellpath MDs are referenced to each path's default MD datum
 Grid System: NAD83 / Lambert Colorado SP, Northern Zone (501), US feet
 North Reference: Grid north
 Scale: True distance
 Coordinates are in feet referenced to Slot
 Depths are in feet
 Created by: guenaler on 2023-10-06; Database: WA_Denver

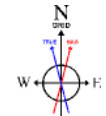
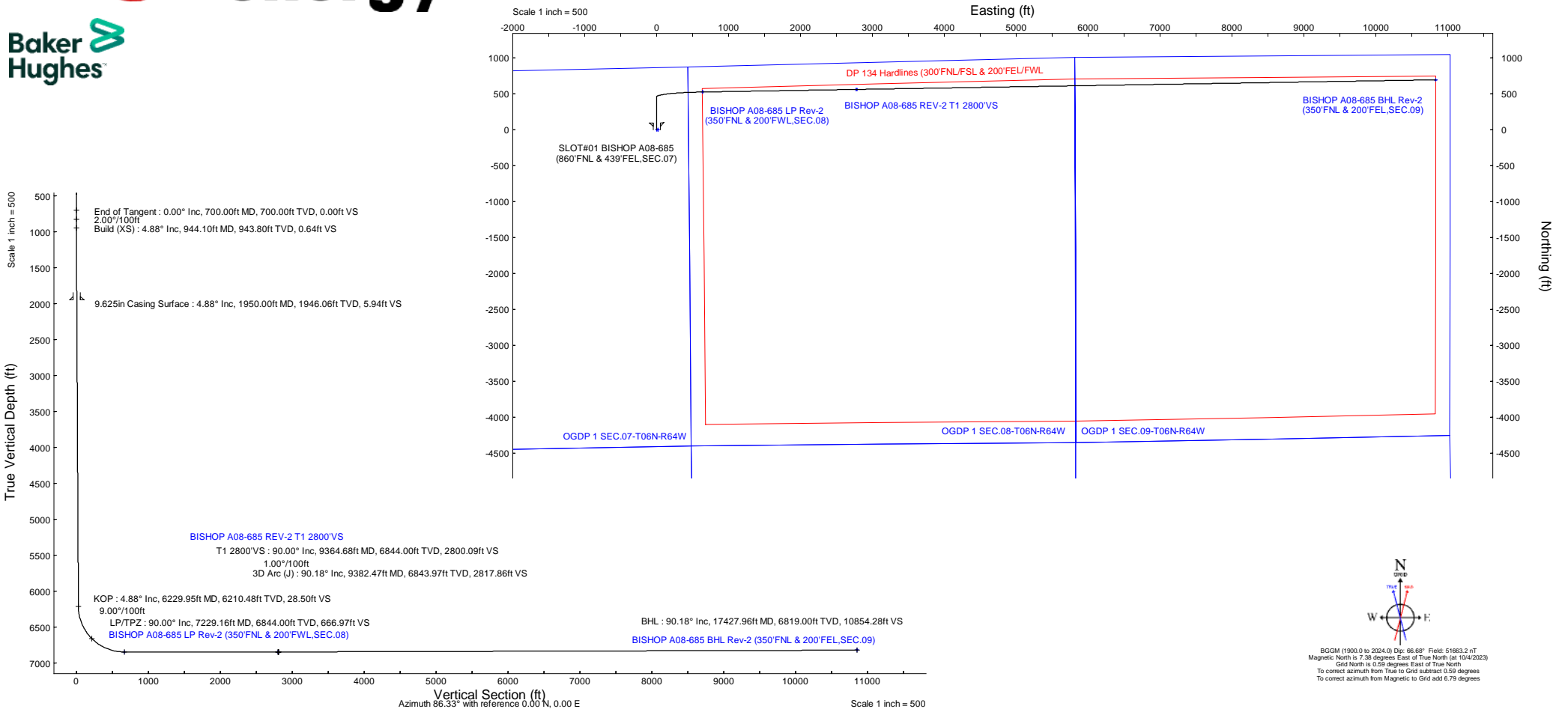
Location Information				
Facility Name	Grid East (US ft)	Grid North (US ft)	Latitude	Longitude
SEC.07-T06N-R64W	3254380.716	1428262.611	40°30'19.3680"N	104°35'6.7200"W
Slot	Local N (ft)	Local E (ft)	Grid East (US ft)	Grid North (US ft)
SLOT#01 BISHOP A08-685 (860'FNL & 439'FEL,SEC.07)	0.20	-16.13	3254364.585	1428262.809
				4771 ft
				0 ft
				4771 ft

Survey Program					
Start MD (ft)	End MD (ft)	Tool	Model	Log Name/Comment	Wellbore
30.00	1950.00	OWSG MWD rev2	OWSG MWD rev2 (MS+IFR1)		BISHOP A08-685 PWB
1950.00	17435.05	OWSG MWD rev2	OWSG MWD rev2 (MS+IFR1)		BISHOP A08-685 PWB



Well Profile Data								
Design Comment	MD (ft)	Inc (°)	Az (°)	TVD (ft)	Local N (ft)	Local E (ft)	DLS (°/100ft)	VS (ft)
SHL	30.00	0.000	359.881	30.00	0.00	0.00	0.00	0.00
End of Tangent	700.00	0.000	359.881	700.00	0.00	0.00	0.00	0.00
Build (XS)	944.10	4.882	359.881	943.80	10.39	-0.02	2.00	0.64
KOP	6229.95	4.882	359.881	6210.48	460.24	-0.96	0.00	28.50
LP/TPZ	7229.16	90.000	89.046	6844.00	524.93	634.67	9.00	666.97
T1 2800'VS	9364.68	90.000	89.046	6844.00	560.48	2769.90	0.00	2800.09
3D Arc (J)	9382.47	90.178	89.046	6843.97	560.77	2787.68	1.00	2817.86
BHL	17427.96	90.178	89.046	6819.00	694.71	10832.02	0.00	10854.28

Targets								
Name	MD (ft)	TVD (ft)	Local N (ft)	Local E (ft)	Grid East (US ft)	Grid North (US ft)	Latitude	Longitude
OGDP 1 SEC.07-T06N-R64W	N/A	-1.00	-0.20	16.13	3254380.72	1428262.61	40°30'19.3680"N	104°35'6.7200"W
OGDP 1 SEC.08-T06N-R64W	N/A	-1.00	-0.20	16.13	3254380.72	1428262.61	40°30'19.3680"N	104°35'6.7200"W
OGDP 1 SEC.09-T06N-R64W	N/A	-1.00	-0.20	16.13	3254380.72	1428262.61	40°30'19.3680"N	104°35'6.7200"W
OGDP 1 SEC.16-T06N-R64W	N/A	-1.00	-0.20	16.13	3254380.72	1428262.61	40°30'19.3680"N	104°35'6.7200"W
OGDP 1 SEC.17-T06N-R64W	N/A	-1.00	-0.20	16.13	3254380.72	1428262.61	40°30'19.3680"N	104°35'6.7200"W
OGDP 1 SEC.18-T06N-R64W	N/A	-1.00	-0.20	16.13	3254380.72	1428262.61	40°30'19.3680"N	104°35'6.7200"W
BISHOP A08-685 BHL Rev-1 (350'FNL & 200'FEL,SEC.09)	N/A	6814.00	694.71	10832.02	3265196.22	1428957.50	40°30'25.1083"N	104°32'46.6134"W
BISHOP A08-685 LP Rev-1 (350'FNL & 200'FEL,SEC.08)	N/A	6814.00	524.93	634.67	3254999.23	1428787.72	40°30'24.4936"N	104°34'58.6428"W
BISHOP A08-685 BHL Rev-2 (350'FNL & 200'FEL,SEC.09)	17427.96	6819.00	694.71	10832.02	3265196.22	1428957.50	40°30'25.1083"N	104°32'46.6134"W
BISHOP A08-685 LP Rev-2 (350'FNL & 200'FEL,SEC.08)	7229.16	6844.00	524.93	634.67	3254999.23	1428787.72	40°30'24.4936"N	104°34'58.6428"W
BISHOP A08-685 REV-2 T1 2800'VS	9364.68	6844.00	560.48	2769.90	3257134.39	1428823.27	40°30'24.6258"N	104°34'30.9971"W
BISHOP A08-685 T1 2800'VS	N/A	6844.00	560.75	2786.22	3257150.71	1428823.54	40°30'24.6268"N	104°34'30.7858"W
DP 134 Hardlines (300'FNL/FSL & 200'FEL/FWL)	N/A	7000.00	0.00	0.00	3254364.58	1428262.81	40°30'19.3716"N	104°35'6.9288"W



BGGM (1900.0 to 2024.0) Dip: 66.68° Field: 51663.2 nT
 Magnetic North is 7.38 degrees East of True North (at 10/4/2023)
 Grid North is 0.59 degrees East of True North
 To correct azimuth from True to Grid subtract 0.59 degrees
 To correct azimuth from Magnetic to Grid add 6.79 degrees



Planned Wellpath Report

BISHOP A08-685 (REV-C.0) PWP

Page 1 of 9



REFERENCE WELLPATH IDENTIFICATION

Operator	NOBLE ENERGY, INC	Well	BISHOP A08-685
Field	WELD COUNTY (NOBLE NAD 83 GRID)	API/Legal	
Facility	SEC.07-T06N-R64W	Wellbore	BISHOP A08-685 PWB
Slot	SLOT#01 BISHOP A08-685 (860'FNL & 439'FEL,SEC.07)		

REPORT SETUP INFORMATION

Projection System	NAD83 / Lambert Colorado SP, Northern Zone (501), US feet	Software System	WellArchitect® 6.0
North Reference	Grid	User	Guenaler
Scale	0.999967	Report Generated	10/6/2023 at 11:22:15 AM
Convergence at slot	0.59° East	Database	WA_Denver

WELLPATH LOCATION

	Local coordinates		Grid coordinates		Geographic coordinates	
	North[ft]	East[ft]	Easting[US ft]	Northing[US ft]	Latitude	Longitude
Slot Location	0.20	-16.13	3254364.59	1428262.81	40.5053810°	-104.5852580°
Facility Reference Pt			3254380.72	1428262.61	40.5053800°	-104.5852000°
Field Reference Pt			3000000.00	4454105.15	48.7761986°	-105.5000000°

WELLPATH DATUM

Calculation method	Minimum curvature	RIG (4741'GL+30'KB = 4771'RKB) (RKB) to Facility Vertical Datum	4771.00ft
Horizontal Reference Pt	Slot	RIG (4741'GL+30'KB = 4771'RKB) (RKB) to Mean Sea Level	4771.00ft
Vertical Reference Pt	RIG (4741'GL+30'KB = 4771'RKB) (RKB)	RIG (4741'GL+30'KB = 4771'RKB) (RKB) to Ground Level at Slot (SLOT#01 BISHOP A08-685 (860'FNL & 439'FEL,SEC.07))	4771.00ft
MD Reference Pt	RIG (4741'GL+30'KB = 4771'RKB) (RKB)	Section Origin	N 0.00, E 0.00 ft
Field Vertical Reference	Mean Sea Level	Section Azimuth	86.33°



Planned Wellpath Report

BISHOP A08-685 (REV-C.0) PWP
Page 2 of 9



REFERENCE WELLPATH IDENTIFICATION			
Operator	NOBLE ENERGY, INC	Well	BISHOP A08-685
Field	WELD COUNTY (NOBLE NAD 83 GRID)	API/Legal	
Facility	SEC.07-T06N-R64W	Wellbore	BISHOP A08-685 PWB
Slot	SLOT#01 BISHOP A08-685 (860'FNL & 439'FEL,SEC.07)		

WELLPATH DATA (182 stations) † = interpolated, ‡ = extrapolated station										
MD [ft]	Inclination [°]	Azimuth [°]	TVD [ft]	Vert Sect [ft]	North [ft]	East [ft]	Latitude	Longitude	DLS [°/100ft]	Comments
0.00†	0.000	359.881	0.00	0.00	0.00	0.00	40.5053810	-104.5852580	0.00	
30.00	0.000	359.881	30.00	0.00	0.00	0.00	40.5053810	-104.5852580	0.00	SHL
130.00†	0.000	359.881	130.00	0.00	0.00	0.00	40.5053810	-104.5852580	0.00	
230.00†	0.000	359.881	230.00	0.00	0.00	0.00	40.5053810	-104.5852580	0.00	
330.00†	0.000	359.881	330.00	0.00	0.00	0.00	40.5053810	-104.5852580	0.00	
430.00†	0.000	359.881	430.00	0.00	0.00	0.00	40.5053810	-104.5852580	0.00	
530.00†	0.000	359.881	530.00	0.00	0.00	0.00	40.5053810	-104.5852580	0.00	
630.00†	0.000	359.881	630.00	0.00	0.00	0.00	40.5053810	-104.5852580	0.00	
700.00	0.000	359.881	700.00	0.00	0.00	0.00	40.5053810	-104.5852580	0.00	End of Tangent
730.00†	0.600	359.881	730.00	0.01	0.16	0.00	40.5053814	-104.5852580	2.00	
830.00†	2.600	359.881	829.96	0.18	2.95	-0.01	40.5053891	-104.5852579	2.00	
930.00†	4.600	359.881	929.75	0.57	9.23	-0.02	40.5054063	-104.5852577	2.00	
944.10	4.882	359.881	943.80	0.64	10.39	-0.02	40.5054095	-104.5852577	2.00	Build (XS)
1030.00†	4.882	359.881	1029.39	1.10	17.70	-0.04	40.5054296	-104.5852575	0.00	
1130.00†	4.882	359.881	1129.03	1.62	26.21	-0.05	40.5054530	-104.5852572	0.00	
1230.00†	4.882	359.881	1228.67	2.15	34.72	-0.07	40.5054763	-104.5852570	0.00	
1330.00†	4.882	359.881	1328.30	2.68	43.23	-0.09	40.5054997	-104.5852567	0.00	
1430.00†	4.882	359.881	1427.94	3.20	51.74	-0.11	40.5055230	-104.5852565	0.00	
1530.00†	4.882	359.881	1527.58	3.73	60.26	-0.13	40.5055464	-104.5852562	0.00	
1630.00†	4.882	359.881	1627.22	4.26	68.77	-0.14	40.5055697	-104.5852560	0.00	
1730.00†	4.882	359.881	1726.85	4.79	77.28	-0.16	40.5055931	-104.5852557	0.00	
1830.00†	4.882	359.881	1826.49	5.31	85.79	-0.18	40.5056165	-104.5852555	0.00	
1930.00†	4.882	359.881	1926.13	5.84	94.30	-0.20	40.5056398	-104.5852552	0.00	
2030.00†	4.882	359.881	2025.77	6.37	102.81	-0.21	40.5056632	-104.5852550	0.00	
2130.00†	4.882	359.881	2125.40	6.89	111.32	-0.23	40.5056865	-104.5852547	0.00	
2230.00†	4.882	359.881	2225.04	7.42	119.83	-0.25	40.5057099	-104.5852545	0.00	
2330.00†	4.882	359.881	2324.68	7.95	128.34	-0.27	40.5057333	-104.5852542	0.00	
2430.00†	4.882	359.881	2424.31	8.47	136.85	-0.28	40.5057566	-104.5852539	0.00	
2530.00†	4.882	359.881	2523.95	9.00	145.36	-0.30	40.5057800	-104.5852537	0.00	
2630.00†	4.882	359.881	2623.59	9.53	153.87	-0.32	40.5058033	-104.5852534	0.00	
2730.00†	4.882	359.881	2723.23	10.06	162.38	-0.34	40.5058267	-104.5852532	0.00	
2830.00†	4.882	359.881	2822.86	10.58	170.89	-0.36	40.5058501	-104.5852529	0.00	
2930.00†	4.882	359.881	2922.50	11.11	179.40	-0.37	40.5058734	-104.5852527	0.00	
3030.00†	4.882	359.881	3022.14	11.64	187.91	-0.39	40.5058968	-104.5852524	0.00	
3130.00†	4.882	359.881	3121.77	12.16	196.42	-0.41	40.5059201	-104.5852522	0.00	
3230.00†	4.882	359.881	3221.41	12.69	204.93	-0.43	40.5059435	-104.5852519	0.00	
3330.00†	4.882	359.881	3321.05	13.22	213.44	-0.44	40.5059668	-104.5852517	0.00	
3430.00†	4.882	359.881	3420.69	13.74	221.95	-0.46	40.5059902	-104.5852514	0.00	
3530.00†	4.882	359.881	3520.32	14.27	230.46	-0.48	40.5060136	-104.5852512	0.00	
3630.00†	4.882	359.881	3619.96	14.80	238.97	-0.50	40.5060369	-104.5852509	0.00	
3730.00†	4.882	359.881	3719.60	15.33	247.48	-0.52	40.5060603	-104.5852507	0.00	
3830.00†	4.882	359.881	3819.24	15.85	255.99	-0.53	40.5060836	-104.5852504	0.00	
3930.00†	4.882	359.881	3918.87	16.38	264.50	-0.55	40.5061070	-104.5852502	0.00	
4030.00†	4.882	359.881	4018.51	16.91	273.01	-0.57	40.5061304	-104.5852499	0.00	
4130.00†	4.882	359.881	4118.15	17.43	281.52	-0.59	40.5061537	-104.5852497	0.00	



Planned Wellpath Report

BISHOP A08-685 (REV-C.0) PWP

Page 3 of 9



REFERENCE WELLPATH IDENTIFICATION

Operator	NOBLE ENERGY, INC	Well	BISHOP A08-685
Field	WELD COUNTY (NOBLE NAD 83 GRID)	API/Legal	
Facility	SEC.07-T06N-R64W	Wellbore	BISHOP A08-685 PWB
Slot	SLOT#01 BISHOP A08-685 (860'FNL & 439'FEL,SEC.07)		

WELLPATH DATA (182 stations) † = interpolated, ‡ = extrapolated station

MD [ft]	Inclination [°]	Azimuth [°]	TVD [ft]	Vert Sect [ft]	North [ft]	East [ft]	Latitude	Longitude	DLS [°/100ft]	Comments
4230.00†	4.882	359.881	4217.78	17.96	290.03	-0.60	40.5061771	-104.5852494	0.00	
4330.00†	4.882	359.881	4317.42	18.49	298.54	-0.62	40.5062004	-104.5852492	0.00	
4430.00†	4.882	359.881	4417.06	19.01	307.05	-0.64	40.5062238	-104.5852489	0.00	
4530.00†	4.882	359.881	4516.70	19.54	315.57	-0.66	40.5062472	-104.5852487	0.00	
4630.00†	4.882	359.881	4616.33	20.07	324.08	-0.67	40.5062705	-104.5852484	0.00	
4730.00†	4.882	359.881	4715.97	20.60	332.59	-0.69	40.5062939	-104.5852482	0.00	
4830.00†	4.882	359.881	4815.61	21.12	341.10	-0.71	40.5063172	-104.5852479	0.00	
4930.00†	4.882	359.881	4915.24	21.65	349.61	-0.73	40.5063406	-104.5852476	0.00	
5030.00†	4.882	359.881	5014.88	22.18	358.12	-0.75	40.5063639	-104.5852474	0.00	
5130.00†	4.882	359.881	5114.52	22.70	366.63	-0.76	40.5063873	-104.5852471	0.00	
5230.00†	4.882	359.881	5214.16	23.23	375.14	-0.78	40.5064107	-104.5852469	0.00	
5330.00†	4.882	359.881	5313.79	23.76	383.65	-0.80	40.5064340	-104.5852466	0.00	
5430.00†	4.882	359.881	5413.43	24.28	392.16	-0.82	40.5064574	-104.5852464	0.00	
5530.00†	4.882	359.881	5513.07	24.81	400.67	-0.83	40.5064807	-104.5852461	0.00	
5630.00†	4.882	359.881	5612.70	25.34	409.18	-0.85	40.5065041	-104.5852459	0.00	
5730.00†	4.882	359.881	5712.34	25.87	417.69	-0.87	40.5065275	-104.5852456	0.00	
5830.00†	4.882	359.881	5811.98	26.39	426.20	-0.89	40.5065508	-104.5852454	0.00	
5930.00†	4.882	359.881	5911.62	26.92	434.71	-0.90	40.5065742	-104.5852451	0.00	
6030.00†	4.882	359.881	6011.25	27.45	443.22	-0.92	40.5065975	-104.5852449	0.00	
6130.00†	4.882	359.881	6110.89	27.97	451.73	-0.94	40.5066209	-104.5852446	0.00	
6229.95	4.882	359.881	6210.48	28.50	460.24	-0.96	40.5066442	-104.5852444	0.00	KOP
6230.00†	4.882	359.937	6210.53	28.50	460.24	-0.96	40.5066443	-104.5852444	9.00	
6330.00†	10.296	61.002	6309.75	36.86	468.85	6.87	40.5066676	-104.5852159	9.00	
6430.00†	18.702	74.433	6406.50	60.68	477.50	30.18	40.5066907	-104.5851318	9.00	
6530.00†	27.480	79.595	6498.41	99.36	485.98	68.39	40.5067129	-104.5849940	9.00	
6630.00†	36.360	82.384	6583.21	151.95	494.10	120.57	40.5067337	-104.5848061	9.00	
6730.00†	45.283	84.195	6658.81	217.16	501.63	185.44	40.5067526	-104.5845726	9.00	
6830.00†	54.226	85.518	6723.35	293.39	508.41	261.38	40.5067690	-104.5842992	9.00	
6930.00†	63.181	86.572	6775.24	378.75	514.26	346.54	40.5067827	-104.5839928	9.00	
7030.00†	72.143	87.470	6813.21	471.14	519.04	438.82	40.5067932	-104.5836608	9.00	
7130.00†	81.108	88.281	6836.32	568.29	522.63	535.94	40.5068003	-104.5833114	9.00	
7229.16	90.000	89.046	6844.00†	666.97	524.93	634.67	40.5068038	-104.5829563	9.00	LP/TPZ
7230.00†	90.000	89.046	6844.00	667.81	524.95	635.51	40.5068038	-104.5829533	0.00	
7330.00†	90.000	89.046	6844.00	767.70	526.61	735.50	40.5068055	-104.5825937	0.00	
7430.00†	90.000	89.046	6844.00	867.58	528.27	835.49	40.5068073	-104.5822341	0.00	
7530.00†	90.000	89.046	6844.00	967.47	529.94	935.47	40.5068090	-104.5818745	0.00	
7630.00†	90.000	89.046	6844.00	1067.36	531.60	1035.46	40.5068107	-104.5815149	0.00	
7730.00†	90.000	89.046	6844.00	1167.25	533.27	1135.45	40.5068124	-104.5811553	0.00	
7830.00†	90.000	89.046	6844.00	1267.14	534.93	1235.43	40.5068142	-104.5807957	0.00	
7930.00†	90.000	89.046	6844.00	1367.02	536.60	1335.42	40.5068159	-104.5804361	0.00	
8030.00†	90.000	89.046	6844.00	1466.91	538.26	1435.40	40.5068176	-104.5800765	0.00	
8130.00†	90.000	89.046	6844.00	1566.80	539.93	1535.39	40.5068193	-104.5797169	0.00	
8230.00†	90.000	89.046	6844.00	1666.69	541.59	1635.38	40.5068211	-104.5793573	0.00	
8330.00†	90.000	89.046	6844.00	1766.57	543.26	1735.36	40.5068228	-104.5789977	0.00	
8430.00†	90.000	89.046	6844.00	1866.46	544.92	1835.35	40.5068245	-104.5786381	0.00	



Planned Wellpath Report

BISHOP A08-685 (REV-C.0) PWP

Page 4 of 9



REFERENCE WELLPATH IDENTIFICATION

Operator	NOBLE ENERGY, INC	Well	BISHOP A08-685
Field	WELD COUNTY (NOBLE NAD 83 GRID)	API/Legal	
Facility	SEC.07-T06N-R64W	Wellbore	BISHOP A08-685 PWB
Slot	SLOT#01 BISHOP A08-685 (860'FNL & 439'FEL,SEC.07)		

WELLPATH DATA (182 stations) † = interpolated, ‡ = extrapolated station

MD [ft]	Inclination [°]	Azimuth [°]	TVD [ft]	Vert Sect [ft]	North [ft]	East [ft]	Latitude	Longitude	DLS [°/100ft]	Comments
8530.00†	90.000	89.046	6844.00	1966.35	546.58	1935.33	40.5068262	-104.5782785	0.00	
8630.00†	90.000	89.046	6844.00	2066.24	548.25	2035.32	40.5068279	-104.5779189	0.00	
8730.00†	90.000	89.046	6844.00	2166.12	549.91	2135.31	40.5068296	-104.5775593	0.00	
8830.00†	90.000	89.046	6844.00	2266.01	551.58	2235.29	40.5068313	-104.5771997	0.00	
8930.00†	90.000	89.046	6844.00	2365.90	553.24	2335.28	40.5068331	-104.5768401	0.00	
9030.00†	90.000	89.046	6844.00	2465.79	554.91	2435.26	40.5068348	-104.5764805	0.00	
9130.00†	90.000	89.046	6844.00	2565.68	556.57	2535.25	40.5068365	-104.5761209	0.00	
9230.00†	90.000	89.046	6844.00	2665.56	558.24	2635.24	40.5068382	-104.5757613	0.00	
9330.00†	90.000	89.046	6844.00	2765.45	559.90	2735.22	40.5068399	-104.5754017	0.00	
9364.68	90.000	89.046	6844.00 ²	2800.09	560.48	2769.90	40.5068405	-104.5752770	0.00	T1 2800'VS
9382.47	90.178	89.046	6843.97	2817.86	560.77	2787.68	40.5068408	-104.5752130	1.00	3D Arc (J)
9430.00†	90.178	89.046	6843.82	2865.34	561.57	2835.21	40.5068416	-104.5750421	0.00	
9530.00†	90.178	89.046	6843.51	2965.23	563.23	2935.19	40.5068433	-104.5746825	0.00	
9630.00†	90.178	89.046	6843.20	3065.11	564.90	3035.18	40.5068450	-104.5743229	0.00	
9730.00†	90.178	89.046	6842.89	3165.00	566.56	3135.17	40.5068467	-104.5739633	0.00	
9830.00†	90.178	89.046	6842.58	3264.89	568.22	3235.15	40.5068484	-104.5736037	0.00	
9930.00†	90.178	89.046	6842.27	3364.77	569.89	3335.14	40.5068501	-104.5732441	0.00	
10030.00†	90.178	89.046	6841.96	3464.66	571.55	3435.12	40.5068518	-104.5728845	0.00	
10130.00†	90.178	89.046	6841.65	3564.55	573.22	3535.11	40.5068535	-104.5725249	0.00	
10230.00†	90.178	89.046	6841.34	3664.44	574.88	3635.09	40.5068552	-104.5721653	0.00	
10330.00†	90.178	89.046	6841.03	3764.32	576.55	3735.08	40.5068569	-104.5718057	0.00	
10430.00†	90.178	89.046	6840.72	3864.21	578.21	3835.07	40.5068586	-104.5714461	0.00	
10530.00†	90.178	89.046	6840.41	3964.10	579.88	3935.05	40.5068603	-104.5710865	0.00	
10630.00†	90.178	89.046	6840.10	4063.98	581.54	4035.04	40.5068620	-104.5707269	0.00	
10730.00†	90.178	89.046	6839.79	4163.87	583.21	4135.02	40.5068637	-104.5703673	0.00	
10830.00†	90.178	89.046	6839.48	4263.76	584.87	4235.01	40.5068654	-104.5700077	0.00	
10930.00†	90.178	89.046	6839.17	4363.65	586.54	4334.99	40.5068671	-104.5696481	0.00	
11030.00†	90.178	89.046	6838.86	4463.53	588.20	4434.98	40.5068688	-104.5692885	0.00	
11130.00†	90.178	89.046	6838.55	4563.42	589.87	4534.97	40.5068705	-104.5689289	0.00	
11230.00†	90.178	89.046	6838.24	4663.31	591.53	4634.95	40.5068721	-104.5685693	0.00	
11330.00†	90.178	89.046	6837.93	4763.20	593.20	4734.94	40.5068738	-104.5682097	0.00	
11430.00†	90.178	89.046	6837.62	4863.08	594.86	4834.92	40.5068755	-104.5678501	0.00	
11530.00†	90.178	89.046	6837.31	4962.97	596.53	4934.91	40.5068772	-104.5674905	0.00	
11630.00†	90.178	89.046	6837.00	5062.86	598.19	5034.89	40.5068789	-104.5671309	0.00	
11730.00†	90.178	89.046	6836.69	5162.74	599.85	5134.88	40.5068806	-104.5667713	0.00	
11830.00†	90.178	89.046	6836.38	5262.63	601.52	5234.87	40.5068822	-104.5664117	0.00	
11930.00†	90.178	89.046	6836.07	5362.52	603.18	5334.85	40.5068839	-104.5660521	0.00	
12030.00†	90.178	89.046	6835.75	5462.41	604.85	5434.84	40.5068856	-104.5656925	0.00	
12130.00†	90.178	89.046	6835.44	5562.29	606.51	5534.82	40.5068873	-104.5653329	0.00	
12230.00†	90.178	89.046	6835.13	5662.18	608.18	5634.81	40.5068890	-104.5649733	0.00	
12330.00†	90.178	89.046	6834.82	5762.07	609.84	5734.79	40.5068906	-104.5646137	0.00	
12430.00†	90.178	89.046	6834.51	5861.95	611.51	5834.78	40.5068923	-104.5642541	0.00	
12530.00†	90.178	89.046	6834.20	5961.84	613.17	5934.76	40.5068940	-104.5638945	0.00	
12630.00†	90.178	89.046	6833.89	6061.73	614.84	6034.75	40.5068956	-104.5635349	0.00	
12730.00†	90.178	89.046	6833.58	6161.62	616.50	6134.74	40.5068973	-104.5631753	0.00	



Planned Wellpath Report

BISHOP A08-685 (REV-C.0) PWP

Page 5 of 9



REFERENCE WELLPATH IDENTIFICATION

Operator	NOBLE ENERGY, INC	Well	BISHOP A08-685
Field	WELD COUNTY (NOBLE NAD 83 GRID)	API/Legal	
Facility	SEC.07-T06N-R64W	Wellbore	BISHOP A08-685 PWB
Slot	SLOT#01 BISHOP A08-685 (860'FNL & 439'FEL,SEC.07)		

WELLPATH DATA (182 stations) † = interpolated, ‡ = extrapolated station

MD [ft]	Inclination [°]	Azimuth [°]	TVD [ft]	Vert Sect [ft]	North [ft]	East [ft]	Latitude	Longitude	DLS [°/100ft]	Comments
12830.00†	90.178	89.046	6833.27	6261.50	618.17	6234.72	40.5068990	-104.5628157	0.00	
12930.00†	90.178	89.046	6832.96	6361.39	619.83	6334.71	40.5069007	-104.5624561	0.00	
13030.00†	90.178	89.046	6832.65	6461.28	621.50	6434.69	40.5069023	-104.5620965	0.00	
13130.00†	90.178	89.046	6832.34	6561.16	623.16	6534.68	40.5069040	-104.5617369	0.00	
13230.00†	90.178	89.046	6832.03	6661.05	624.83	6634.66	40.5069056	-104.5613773	0.00	
13330.00†	90.178	89.046	6831.72	6760.94	626.49	6734.65	40.5069073	-104.5610177	0.00	
13430.00†	90.178	89.046	6831.41	6860.83	628.16	6834.64	40.5069090	-104.5606581	0.00	
13530.00†	90.178	89.046	6831.10	6960.71	629.82	6934.62	40.5069106	-104.5602985	0.00	
13630.00†	90.178	89.046	6830.79	7060.60	631.48	7034.61	40.5069123	-104.5599389	0.00	
13730.00†	90.178	89.046	6830.48	7160.49	633.15	7134.59	40.5069140	-104.5595793	0.00	
13830.00†	90.178	89.046	6830.17	7260.38	634.81	7234.58	40.5069156	-104.5592197	0.00	
13930.00†	90.178	89.046	6829.86	7360.26	636.48	7334.56	40.5069173	-104.5588601	0.00	
14030.00†	90.178	89.046	6829.55	7460.15	638.14	7434.55	40.5069189	-104.5585005	0.00	
14130.00†	90.178	89.046	6829.24	7560.04	639.81	7534.54	40.5069206	-104.5581409	0.00	
14230.00†	90.178	89.046	6828.93	7659.92	641.47	7634.52	40.5069222	-104.5577813	0.00	
14330.00†	90.178	89.046	6828.62	7759.81	643.14	7734.51	40.5069239	-104.5574217	0.00	
14430.00†	90.178	89.046	6828.31	7859.70	644.80	7834.49	40.5069255	-104.5570622	0.00	
14530.00†	90.178	89.046	6827.99	7959.59	646.47	7934.48	40.5069272	-104.5567026	0.00	
14630.00†	90.178	89.046	6827.68	8059.47	648.13	8034.46	40.5069288	-104.5563430	0.00	
14730.00†	90.178	89.046	6827.37	8159.36	649.80	8134.45	40.5069305	-104.5559834	0.00	
14830.00†	90.178	89.046	6827.06	8259.25	651.46	8234.43	40.5069321	-104.5556238	0.00	
14930.00†	90.178	89.046	6826.75	8359.13	653.13	8334.42	40.5069338	-104.5552642	0.00	
15030.00†	90.178	89.046	6826.44	8459.02	654.79	8434.41	40.5069354	-104.5549046	0.00	
15130.00†	90.178	89.046	6826.13	8558.91	656.46	8534.39	40.5069371	-104.5545450	0.00	
15230.00†	90.178	89.046	6825.82	8658.80	658.12	8634.38	40.5069387	-104.5541854	0.00	
15330.00†	90.178	89.046	6825.51	8758.68	659.78	8734.36	40.5069404	-104.5538258	0.00	
15430.00†	90.178	89.046	6825.20	8858.57	661.45	8834.35	40.5069420	-104.5534662	0.00	
15530.00†	90.178	89.046	6824.89	8958.46	663.11	8934.33	40.5069436	-104.5531066	0.00	
15630.00†	90.178	89.046	6824.58	9058.35	664.78	9034.32	40.5069453	-104.5527470	0.00	
15730.00†	90.178	89.046	6824.27	9158.23	666.44	9134.31	40.5069469	-104.5523874	0.00	
15830.00†	90.178	89.046	6823.96	9258.12	668.11	9234.29	40.5069485	-104.5520278	0.00	
15930.00†	90.178	89.046	6823.65	9358.01	669.77	9334.28	40.5069502	-104.5516682	0.00	
16030.00†	90.178	89.046	6823.34	9457.89	671.44	9434.26	40.5069518	-104.5513086	0.00	
16130.00†	90.178	89.046	6823.03	9557.78	673.10	9534.25	40.5069534	-104.5509490	0.00	
16230.00†	90.178	89.046	6822.72	9657.67	674.77	9634.23	40.5069551	-104.5505894	0.00	
16330.00†	90.178	89.046	6822.41	9757.56	676.43	9734.22	40.5069567	-104.5502298	0.00	
16430.00†	90.178	89.046	6822.10	9857.44	678.10	9834.21	40.5069583	-104.5498702	0.00	
16530.00†	90.178	89.046	6821.79	9957.33	679.76	9934.19	40.5069600	-104.5495106	0.00	
16630.00†	90.178	89.046	6821.48	10057.22	681.43	10034.18	40.5069616	-104.5491510	0.00	
16730.00†	90.178	89.046	6821.17	10157.10	683.09	10134.16	40.5069632	-104.5487914	0.00	
16830.00†	90.178	89.046	6820.86	10256.99	684.76	10234.15	40.5069648	-104.5484318	0.00	
16930.00†	90.178	89.046	6820.55	10356.88	686.42	10334.13	40.5069665	-104.5480722	0.00	
17030.00†	90.178	89.046	6820.24	10456.77	688.09	10434.12	40.5069681	-104.5477126	0.00	
17130.00†	90.178	89.046	6819.92	10556.65	689.75	10534.11	40.5069697	-104.5473530	0.00	
17230.00†	90.178	89.046	6819.61	10656.54	691.41	10634.09	40.5069713	-104.5469934	0.00	

REFERENCE WELLPATH IDENTIFICATION			
Operator	NOBLE ENERGY, INC	Well	BISHOP A08-685
Field	WELD COUNTY (NOBLE NAD 83 GRID)	API/Legal	
Facility	SEC.07-T06N-R64W	Wellbore	BISHOP A08-685 PWB
Slot	SLOT#01 BISHOP A08-685 (860'FNL & 439'FEL,SEC.07)		

WELLPATH DATA (182 stations) † = interpolated, ‡ = extrapolated station										
MD [ft]	Inclination [°]	Azimuth [°]	TVD [ft]	Vert Sect [ft]	North [ft]	East [ft]	Latitude	Longitude	DLS [°/100ft]	Comments
17330.00†	90.178	89.046	6819.30	10756.43	693.08	10734.08	40.5069729	-104.5466338	0.00	
17427.96	90.178	89.046	6819.00‡	10854.28	694.71	10832.02	40.5069745	-104.5462815	0.00	BHL

HOLE & CASING SECTIONS - Ref Wellbore: BISHOP A08-685 PWB Ref Wellpath: BISHOP A08-685 (REV-C.0) PWP									
String/Diameter	Start MD [ft]	End MD [ft]	Interval [ft]	Start TVD [ft]	End TVD [ft]	Start N/S [ft]	Start E/W [ft]	End N/S [ft]	End E/W [ft]
9.625in Casing Surface	30.00	1950.00	1920.00	30.00	1946.06	0.00	0.00	96.00	-0.20

REFERENCE WELLPATH IDENTIFICATION			
Operator	NOBLE ENERGY, INC	Well	BISHOP A08-685
Field	WELD COUNTY (NOBLE NAD 83 GRID)	API/Legal	
Facility	SEC.07-T06N-R64W	Wellbore	BISHOP A08-685 PWB
Slot	SLOT#01 BISHOP A08-685 (860'FNL & 439'FEL,SEC.07)		

TARGETS									
Name	MD [ft]	TVD [ft]	North [ft]	East [ft]	Grid East [US ft]	Grid North [US ft]	Latitude	Longitude	Shape
OGDP 1 SEC.07-T06N-R64W	N/A	-1.00	-0.20	16.13	3254380.72	1428262.61	40.5053800	-104.5852000	polygon
2D Polygon: dimensions not calculated									
OGDP 1 SEC.08-T06N-R64W	N/A	-1.00	-0.20	16.13	3254380.72	1428262.61	40.5053800	-104.5852000	polygon
2D Polygon: dimensions not calculated									
OGDP 1 SEC.09-T06N-R64W	N/A	-1.00	-0.20	16.13	3254380.72	1428262.61	40.5053800	-104.5852000	polygon
2D Polygon: dimensions not calculated									
OGDP 1 SEC.16-T06N-R64W	N/A	-1.00	-0.20	16.13	3254380.72	1428262.61	40.5053800	-104.5852000	polygon
2D Polygon: dimensions not calculated									
OGDP 1 SEC.17-T06N-R64W	N/A	-1.00	-0.20	16.13	3254380.72	1428262.61	40.5053800	-104.5852000	polygon
2D Polygon: dimensions not calculated									
OGDP 1 SEC.18-T06N-R64W	N/A	-1.00	-0.20	16.13	3254380.72	1428262.61	40.5053800	-104.5852000	polygon
2D Polygon: dimensions not calculated									
BISHOP A08-685 BHL Rev-1 (350'FSL & 200'FEL,SEC.09)	N/A	6814.00	694.71	10832.02	3265196.22	1428957.50	40.5069745	-104.5462815	point
BISHOP A08-685 LP Rev-1 (350'FNL & 200'FWL,SEC.08)	N/A	6814.00	524.93	634.67	3254999.23	1428787.72	40.5068038	-104.5829563	point
3) BISHOP A08-685 BHL Rev-2 (350'FNL & 200'FEL,SEC.09)	17427.96	6819.00	694.71	10832.02	3265196.22	1428957.50	40.5069745	-104.5462815	point
1) BISHOP A08-685 LP Rev-2 (350'FNL & 200'FWL,SEC.08)	7229.16	6844.00	524.93	634.67	3254999.23	1428787.72	40.5068038	-104.5829563	point
2) BISHOP A08-685 REV-2 T1 2800'VS	9364.68	6844.00	560.48	2769.90	3257134.39	1428823.27	40.5068405	-104.5752770	point
BISHOP A08-685 T1 2800'VS	N/A	6844.00	560.75	2786.22	3257150.71	1428823.54	40.5068408	-104.5752183	point
DP 134 Hardlines (300'FNL/FSL & 200'FEL/FWL)	N/A	7000.00	0.00	0.00	3254364.58	1428262.81	40.5053810	-104.5852580	polygon
2D Polygon: dimensions not calculated									



Planned Wellpath Report

BISHOP A08-685 (REV-C.0) PWP

Page 8 of 9



REFERENCE WELLPATH IDENTIFICATION			
Operator	NOBLE ENERGY, INC	Well	BISHOP A08-685
Field	WELD COUNTY (NOBLE NAD 83 GRID)	API/Legal	
Facility	SEC.07-T06N-R64W	Wellbore	BISHOP A08-685 PWB
Slot	SLOT#01 BISHOP A08-685 (860'FNL & 439'FEL,SEC.07)		

SURVEY PROGRAM - Ref Wellbore: BISHOP A08-685 PWB Ref Wellpath: BISHOP A08-685 (REV-C.0) PWP				
Start MD [ft]	End MD [ft]	Positional Uncertainty Model	Log Name/Comment	Wellbore
30.00	1950.00	OWSG MWD rev2 (MS+IFR1)		BISHOP A08-685 PWB
1950.00	17435.05	OWSG MWD rev2 (MS+IFR1)		BISHOP A08-685 PWB



Planned Wellpath Report

BISHOP A08-685 (REV-C.0) PWP

Page 9 of 9



REFERENCE WELLPATH IDENTIFICATION			
Operator	NOBLE ENERGY, INC	Well	BISHOP A08-685
Field	WELD COUNTY (NOBLE NAD 83 GRID)	API/Legal	
Facility	SEC.07-T06N-R64W	Wellbore	BISHOP A08-685 PWB
Slot	SLOT#01 BISHOP A08-685 (860'FNL & 439'FEL,SEC.07)		

DESIGN COMMENTS				
MD [ft]	Inclination [°]	Azimuth [°]	TVD [ft]	Comment
30.00	0.000	359.881	30.00	SHL
700.00	0.000	359.881	700.00	End of Tangent
944.10	4.882	359.881	943.80	Build (XS)
6229.95	4.882	359.881	6210.48	KOP
7229.16	90.000	89.046	6844.00	LP/TPZ
9364.68	90.000	89.046	6844.00	T1 2800'VS
9382.47	90.178	89.046	6843.97	3D Arc (J)
17427.96	90.178	89.046	6819.00	BHL



Closest Approach Clearance Summary Report

BISHOP A08-685 (REV-C.0) PWP - SPE WPTS Stop Drilling HSE Risk (2017)
Page 1 of 6



REFERENCE WELLPATH IDENTIFICATION			
Operator	NOBLE ENERGY, INC	Well	BISHOP A08-685
Field	WELD COUNTY (NOBLE NAD 83 GRID)	API/Legal	
Facility	SEC.07-T06N-R64W	Wellbore	BISHOP A08-685 PWB
Slot	SLOT#01 BISHOP A08-685 (860'FNL & 439'FEL,SEC.07)		

REPORT SETUP INFORMATION			
Projection System	NAD83 / Lambert Colorado SP, Northern Zone (501), US feet	Software System	WellArchitect® 6.0
North Reference	Grid	User	Guenaler
Scale	0.999967	Report Generated	10/6/2023 at 11:24:03 AM
Convergence at slot	0.59° East	Database	WA_Denver

WELLPATH LOCATION						
	Local coordinates		Grid coordinates		Geographic coordinates	
	North[ft]	East[ft]	Easting[US ft]	Northing[US ft]	Latitude	Longitude
Slot Location	0.20	-16.13	3254364.59	1428262.81	40°30'19.3716"N	104°35'6.9288"W
Facility Reference Pt			3254380.72	1428262.61	40°30'19.3680"N	104°35'6.7200"W
Field Reference Pt			3000000.00	4454105.15	48°46'34.3150"N	105°30'0.0000"W

WELLPATH DATUM			
Calculation method	Minimum Curvature	RIG (4741'GL+30'KB = 4771'RKB) (RKB) to Facility Vertical Datum	4771.00ft
Horizontal Reference Pt	Slot	RIG (4741'GL+30'KB = 4771'RKB) (RKB) to Mean Sea Level	4771.00ft
Vertical Reference Pt	RIG (4741'GL+30'KB = 4771'RKB) (RKB)	RIG (4741'GL+30'KB = 4771'RKB) (RKB) to Ground Level at Slot (SLOT#01 BISHOP A08-685 (860'FNL & 439'FEL,SEC.07))	4771.00ft
MD Reference Pt	RIG (4741'GL+30'KB = 4771'RKB) (RKB)		
Field Vertical Reference	Mean Sea Level		

POSITIONAL UNCERTAINTY CALCULATION SETTINGS					
Ellipse Confidence Limit	3.50 Std Dev	Ellipse Start MD	30.00ft	Surface Position Uncertainty	included
Declination	7.38° East of TN	Dip Angle	66.68°	Mag Field Strength	51663 nT
Slot Surface Uncertainty @1SD		Horizontal	0.100ft	Vertical	1.000ft
Facility Surface Uncertainty @1SD		Horizontal	8.200ft	Vertical	3.000ft
Positional Uncertainty values in the WELLPATH DATA table are the projection of the ellipsoid of uncertainty onto the vertical and horizontal planes					



Closest Approach Clearance Summary Report

BISHOP A08-685 (REV-C.0) PWP - SPE WPTS Stop Drilling HSE Risk (2017)
Page 2 of 6



REFERENCE WELLPATH IDENTIFICATION			
Operator	NOBLE ENERGY, INC	Well	BISHOP A08-685
Field	WELD COUNTY (NOBLE NAD 83 GRID)	API/Legal	
Facility	SEC.07-T06N-R64W	Wellbore	BISHOP A08-685 PWB
Slot	SLOT#01 BISHOP A08-685 (860'FNL & 439'FEL,SEC.07)		

PROXIMITY-SCAN RULE			
Rule Name	SPE WPTS Stop Drilling HSE Risk (2017)	Rule Based On	Ratio
Plane of Rule	Closest Approach	Threshold Value	1.00
Include Casing & Hole Size	yes	Apply Cone of Safety	no

HOLE & CASING SECTIONS - Ref Wellbore: BISHOP A08-685 PWB Ref Wellpath: BISHOP A08-685 (REV-C.0) PWP									
String/Diameter	Start MD [ft]	End MD [ft]	Interval [ft]	Start TVD [ft]	End TVD [ft]	Start N/S [ft]	Start E/W [ft]	End N/S [ft]	End E/W [ft]
9.625in Casing Surface	30.00	1950.00	1920.00	30.00	1946.06	0.00	0.00	96.00	-0.20

SURVEY PROGRAM - Ref Wellbore: BISHOP A08-685 PWB Ref Wellpath: BISHOP A08-685 (REV-C.0) PWP				
Start MD [ft]	End MD [ft]	Positional Uncertainty Model	Log Name/Comment	Wellbore
30.00	1950.00	OWSG MWD rev2 (MS+IFR1)		BISHOP A08-685 PWB
1950.00	17435.05	OWSG MWD rev2 (MS+IFR1)		BISHOP A08-685 PWB



Closest Approach Clearance Summary Report

BISHOP A08-685 (REV-C.0) PWP - SPE WPTS Stop Drilling HSE Risk (2017)
Page 3 of 6



REFERENCE WELLPATH IDENTIFICATION			
Operator	NOBLE ENERGY, INC	Well	BISHOP A08-685
Field	WELD COUNTY (NOBLE NAD 83 GRID)	API/Legal	
Facility	SEC.07-T06N-R64W	Wellbore	BISHOP A08-685 PWB
Slot	SLOT#01 BISHOP A08-685 (860'FNL & 439'FEL,SEC.07)		

CALCULATION RANGE & CUTOFF		
From: 30.00ft MD	To: 17427.96ft MD	C-C Cutoff: (none)

OFFSET WELL CLEARANCE SUMMARY (80 Offset Wellpaths selected) Ratios are calculated in Closest Approach plane												
Offset Facility	Offset Slot	Offset Well	Offset Wellbore	Offset Wellpath	Wellbore Status	C-C Clearance Distance			Rule Separation Ratio			
						Ref MD [ft]	Min C-C Clear Dist [ft]	Diverging from MD [ft]	Ref MD of Min Ratio [ft]	Min Ratio	Min Ratio Dvrg from [ft]	Rule Status
SEC.09-T06N-R64W	SLOT#01 OWL CREEK #5	OWL CREEK #5 (05-123-11930)	OWL CREEK #5 AWB	OWL CREEK #5 AWP (05-123-11930)	Drilling	16902.17	339.56	16902.17	16902.13	0.04	16902.13	FAIL
SEC.09-T06N-R64W	SLOT#03 HOWARD LAKE #21-9	HOWARD LAKE #21-9 (05-123-23073)	HOWARD LAKE #21-9 AWB	HOWARD LAKE #21-9 AWP (05-123-23073)	Drilling	14227.80	427.06	14227.80	14227.80	0.05	14227.80	FAIL
SEC.09-T06N-R64W	SLOT#02 HOWARD LAKE #41-9	HOWARD LAKE #41-9 (05-123-23074)	HOWARD LAKE #41-9 AWB	HOWARD LAKE #41-9 AWP (05-123-23074)	Drilling	17116.71	506.23	17116.71	17116.61	0.06	17116.61	FAIL
SEC.09-T06N-R64W	SLOT#05 HOWARD LAKE #11-9	HOWARD LAKE #11-9 (05-123-22890)	HOWARD LAKE #11-9 AWB	HOWARD LAKE #11-9 AWP (05-123-22890)	Drilling	12931.39	510.30	12931.39	12931.28	0.06	12931.28	FAIL
SEC.09-T06N-R64W	SLOT#18 HOWARD LAKE #12-9	HOWARD LAKE #12-9 (05-123-22344)	HOWARD LAKE #12-9 AWB	HOWARD LAKE #12-9 AWP (05-123-22344)	Drilling	12947.13	1581.51	12947.13	12946.10	0.19	12946.10	FAIL
SEC.08-T06N-R64W	SLOT#15 GRADY #1 (05-123-14810)	GRADY #1 (05-123-14810)	GRADY #1 AWB	GRADY #1 AWP	Drilling	30.00	1506.76	7577.35	7577.35	0.20	7577.35	FAIL
SEC.09-T06N-R64W	SLOT#07 HOWARD LAKE #42-9	HOWARD LAKE #42-9 (05-123-23063)	HOWARD LAKE #42-9 AWB	HOWARD LAKE #42-9 AWP (05-123-23063)	Drilling	17087.12	1748.40	17087.12	17085.95	0.21	17085.95	FAIL
SEC.08-T06N-R64W	SLOT#11 FRANCIS #22-8 (05-123-22515)	FRANCIS #22-8 (05-123-22515)	FRANCIS #22-8 AWB	FRANCIS #22-8 AWP	Drilling	8843.71	1800.35	8843.71	8843.76	0.21	8843.76	FAIL
SEC.07-T06N-R64W	SLOT#37 DYER #42-7 (05-123-13959)	DYER #42-7 (05-123-13959)	DYER #42-7 AWB	DYER #42-7 AWP (05-123-13959)	Drilling	30.00	1238.67	700.00	6545.36	0.22	6545.36	FAIL
SEC.07-T06N-R64W	SLOT#41 Ehrlich #32-7 (05-123-20196)	Ehrlich #32-7 (05-123-20196)	Ehrlich #32-7 AWB	Ehrlich #32-7 AWP	Drilling	30.00	1875.98	700.00	6504.16	0.29	6504.16	FAIL
SEC.08-T06N-R64W	SLOT#04 UHRICH #43-8 (05-123-21656)	UHRICH #43-8 (05-123-21656)	UHRICH #43-8 AWB	UHRICH #43-8 AWP	Drilling	11815.20	3133.92	11815.20	11811.10	0.37	11811.10	FAIL
SEC.08-T06N-R64W	SLOT#08 UHRICH #33-8 (05-123-20467)	UHRICH #33-8 (05-123-20467)	UHRICH #33-8 AWB	UHRICH #33-8 AWP	Drilling	10356.70	3135.88	10356.70	10352.50	0.37	10352.50	FAIL
SEC.07-T06N-R64W	SLOT#30 KREPS #21-7 (05-123-20207)	KREPS #21-7 (05-123-20207)	KREPS #21-7 AWB	KREPS #21-7 AWP	Drilling	3792.91	2897.59	3792.91	6500.40	0.38	6500.40	FAIL
SEC.07-T06N-R64W	SLOT#35 CARLSON #33-7 (05-123-19548)	CARLSON #33-7 (05-123-19548)	CARLSON #33-7 AWB	CARLSON #33-7 AWP	Drilling	130.00	2734.87	700.00	6693.73	0.40	6693.73	FAIL
SEC.07-T06N-R64W	SLOT#38 EHRLICH #22-7 (05-123-14184)	EHRLICH #22-7 (05-123-14184)	EHRLICH #22-7 AWB	EHRLICH #22-7 AWP	Drilling	30.00	3543.49	700.00	6601.45	0.49	6601.45	FAIL
SEC.07-T06N-R64W	SLOT#32 EHRLICH #3 (05-123-12737)	EHRLICH #3 (05-123-12737)	EHRLICH #3 AWB	EHRLICH #3 AWP	Drilling	130.00	3709.20	700.00	6664.82	0.52	6664.82	FAIL
SEC.07-T06N-R64W	SLOT#34 KREPS #11-7 (05-123-14166)	KREPS #11-7 (05-123-14166)	KREPS #11-7 AWB	KREPS #11-7 AWP	Drilling	2956.48	4039.98	2956.48	6587.49	0.52	6587.49	FAIL
SEC.09-T06N-R64W	SLOT#09 HOWARD USX A #9-16	HOWARD USX A #9-16 (05-123-24493)	HOWARD USX A #9-16 AWB	HOWARD USX A #9-16 AWP (05-123-24493)	Drilling	16890.70	4395.88	16890.70	16883.29	0.52	16883.29	FAIL
SEC.08-T06N-R64W	SLOT#16 UHRICH #34-8 (05-123-14446)	UHRICH #34-8 (05-123-14446)	UHRICH #34-8 AWB	UHRICH #34-8 AWP	Drilling	10365.02	4491.22	10365.02	10356.37	0.54	10356.37	FAIL
SEC.07-T06N-R64W	SLOT#42 EHRLICH #4 (05-123-12738)	EHRLICH #4 (05-123-12738)	EHRLICH #4 AWB	EHRLICH #4 AWP	Drilling	30.00	4119.70	700.00	6613.10	0.55	6613.10	FAIL
SEC.07-T06N-R64W	SLOT#24 BISHOP A06-712 (1010'FNL & 463'FEL,SEC.07)	BISHOP A06-712	BISHOP A06-712 PWB	BISHOP A06-712 (REV-C.0) PWP	Planned	6839.77	29.00	6839.77	6836.54	0.59	6836.54	FAIL
SEC.08-T06N-R64W	SLOT#06 ERICKSON A #8-2 (05-123-23853)	ERICKSON A #8-2 (05-123-23853)	ERICKSON A #8-2 AWB	ERICKSON A #8-2 AWP	Drilling	10313.18	279.30	10313.18	10314.02	1.03	10314.02	WARN
SEC.08-T06N-R64W	SLOT#07 FRANCIS #11-8 (05-123-22517)	FRANCIS #11-8 (05-123-22517)	FRANCIS #11-8 AWB	FRANCIS #11-8 AWP	Drilling	7479.16	93.93	7479.16	7479.04	1.28	7479.04	PASS
SEC.08-T06N-R64W	SLOT#03 FRANCIS #21-8 (05-123-27380)	FRANCIS #21-8 (05-123-27380)	FRANCIS #21-8 AWB	FRANCIS #21-8 AWP	Drilling	8870.89	138.84	8870.89	8870.98	1.62	8870.98	PASS
SEC.09-T06N-R64W	SLOT#15 HOWARD USX A #09-02D	HOWARD USX A #09-02D (05-123-33521)	HOWARD USX A #09-02D AWB	HOWARD USX A #09-02D AWP (05-123-33521)	Drilling	15570.30	409.95	15570.30	15570.13	1.88	15570.13	PASS



Closest Approach Clearance Summary Report

BISHOP A08-685 (REV-C.0) PWP - SPE WPTS Stop Drilling HSE Risk (2017)
Page 4 of 6



REFERENCE WELLPATH IDENTIFICATION			
Operator	NOBLE ENERGY, INC	Well	BISHOP A08-685
Field	WELD COUNTY (NOBLE NAD 83 GRID)	API/Legal	
Facility	SEC.07-T06N-R64W	Wellbore	BISHOP A08-685 PWB
Slot	SLOT#01 BISHOP A08-685 (860'FNL & 439'FEL,SEC.07)		

CALCULATION RANGE & CUTOFF		
From: 30.00ft MD	To: 17427.96ft MD	C-C Cutoff: (none)

OFFSET WELL CLEARANCE SUMMARY (80 Offset Wellpaths selected) Ratios are calculated in Closest Approach plane												
Offset Facility	Offset Slot	Offset Well	Offset Wellbore	Offset Wellpath	Wellbore Status	C-C Clearance Distance			Rule Separation Ratio			
						Ref MD [ft]	Min C-C Clear Dist [ft]	Diverging from MD [ft]	Ref MD of Min Ratio [ft]	Min Ratio	Min Ratio Dvrg from [ft]	Rule Status
SEC.07-T06N-R64W	SLOT#27 BISHOP A05-764 (1011'FNL & 396'FEL,SEC.07)	BISHOP A05-764	BISHOP A05-764 PWB	BISHOP A05-764 (REV-C.0) PWP	Planned	8679.66	130.66	8679.66	8683.99	1.92	8683.99	PASS
SEC.07-T06N-R64W	SLOT#02 BISHOP A08-675 (861'FNL & 417'FEL,SEC.07)	BISHOP A08-675	BISHOP A08-675 PWB	BISHOP A08-675 (REV-C.0) PWP	Planned	732.60	22.52	732.60	17424.74	1.97	17424.74	PASS
SEC.07-T06N-R64W	SLOT#16 BISHOP A18-715 (860'FNL & 462'FEL,SEC.07)	BISHOP A18-715	BISHOP A18-715 PWB	BISHOP A18-715 (REV-C.0) PWP	Planned	688.71	22.49	6830.00	981.85	2.17	6830.00	PASS
SEC.07-T06N-R64W	SLOT#28 BISHOP A05-755 (1012'FNL & 373'FEL,SEC.07)	BISHOP A05-755	BISHOP A05-755 PWB	BISHOP A05-755 (REV-C.0) PWP	Planned	30.00	164.38	9299.60	9299.60	2.30	9299.60	PASS
SEC.07-T06N-R64W	SLOT#26 BISHOP A05-773 (1011'FNL & 418'FEL,SEC.07)	BISHOP A05-773	BISHOP A05-773 PWB	BISHOP A05-773 (REV-C.0) PWP	Planned	8079.49	126.87	8079.49	8084.95	2.34	8084.95	PASS
SEC.08-T06N-R64W	SLOT#02 ERICKSON A #8-1 (05-123-23826)	ERICKSON A #8-1 (05-123-23826)	ERICKSON A #8-1 AWB	ERICKSON A #8-1 AWP	Drilling	11559.31	346.49	11559.31	11565.32	2.71	11565.32	PASS
SEC.08-T06N-R64W	SLOT#01 ERICKSON A #8-17 (05-123-23751)	ERICKSON A #8-17 (05-123-23751)	ERICKSON A #8-17 AWB	ERICKSON A #8-17 AWP	Drilling	11221.66	964.73	11221.66	11241.74	3.51	11241.74	PASS
SEC.07-T06N-R64W	SLOT#25 BISHOP A05-783 (1010'FNL & 441'FEL,SEC.07)	BISHOP A05-783	BISHOP A05-783 PWB	BISHOP A05-783 (REV-C.0) PWP	Planned	880.28	141.67	7486.33	7486.33	3.64	7486.33	PASS
SEC.07-T06N-R64W	SLOT#03 BISHOP A08-665 (861'FNL & 394'FEL,SEC.07)	BISHOP A08-665	BISHOP A08-665 PWB	BISHOP A08-665 (REV-C.0) PWP	Planned	706.19	45.05	706.19	17427.96	3.92	17427.96	PASS
SEC.09-T06N-R64W	SLOT#17 HOWARD USX A #09-06D	HOWARD USX A #09-06D (05-123-33532)	HOWARD USX A #09-06D AWB	HOWARD USX A #09-06D AWP (05-123-33532)	Drilling	14398.18	1646.75	14398.18	14057.73	4.98	14057.73	PASS
SEC.07-T06N-R64W	SLOT#15 BISHOP A18-724 (859'FNL & 484'FEL,SEC.07)	BISHOP A18-724	BISHOP A18-724 PWB	BISHOP A18-724 (REV-C.0) PWP	Planned	30.00	44.78	6530.00	734.83	5.49	14930.00	PASS
SEC.07-T06N-R64W	SLOT#04 BISHOP A08-655 (862'FNL & 372'FEL,SEC.07)	BISHOP A08-655	BISHOP A08-655 PWB	BISHOP A08-655 (REV-C.0) PWP	Planned	761.00	67.57	761.00	17427.96	5.89	17427.96	PASS
SEC.08-T06N-R64W	SLOT#14 ERICKSON A #8-7 (05-123-23750)	ERICKSON A #8-7 (05-123-23750)	ERICKSON A #8-7 AWB	ERICKSON A #8-7 AWP	Drilling	10502.49	1595.69	10502.49	10557.85	6.06	10557.85	PASS
SEC.09-T06N-R64W	SLOT#14 HOWARD USX A #09-19	HOWARD USX A #09-19 (05-123-33520)	HOWARD USX A #09-19 AWB	HOWARD USX A #09-19 AWP (05-123-33520)	Drilling	13623.92	1100.02	13623.92	13692.85	6.56	13692.85	PASS
SEC.07-T06N-R64W	SLOT#23 BISHOP A06-722 (1009'FNL & 486'FEL,SEC.07)	BISHOP A06-722	BISHOP A06-722 PWB	BISHOP A06-722 (REV-C.0) PWP	Planned	30.00	156.42	4030.00	6234.20	6.72	6234.20	PASS
SEC.09-T06N-R64W	SLOT#08 HOWARD USX A #9-7	HOWARD USX A #9-7 (05-123-25283)	HOWARD USX A #9-7 AWB	HOWARD USX A #9-7 AWP (05-123-25283)	Drilling	15836.52	1606.76	15836.52	15954.59	7.29	15954.59	PASS
SEC.07-T06N-R64W	SLOT#05 CARLSON A08-645 (1424'FSL & 919'FEL,SEC.07)	CARLSON A08-645	CARLSON A08-645 PWB	CARLSON A08-645 (REV-C.0) PWP	Planned	7104.29	2612.70	7104.29	17427.96	7.74	17427.96	PASS
SEC.07-T06N-R64W	SLOT#14 BISHOP A18-733 (859'FNL & 507'FEL,SEC.07)	BISHOP A18-733	BISHOP A18-733 PWB	BISHOP A18-733 (REV-C.0) PWP	Planned	30.00	67.30	6430.00	751.03	8.39	6630.00	PASS
SEC.07-T06N-R64W	SLOT#29 DYER #41-7 (05-123-20669)	DYER #41-7 (05-123-20669)	DYER #41-7 AWB	DYER #41-7 AWP	Drilling	2908.96	240.06	2908.96	4193.23	8.41	6030.00	PASS
SEC.07-T06N-R64W	SLOT#06 CARLSON A08-635 (1423'FSL & 882'FEL,SEC.07)	CARLSON A08-635	CARLSON A08-635 PWB	CARLSON A08-635 (REV-C.0) PWP	Planned	30.00	3020.81	700.00	17427.96	9.70	17427.96	PASS
SEC.07-T06N-R64W	SLOT#13 BISHOP A18-742 (858'FNL & 529'FEL,SEC.07)	BISHOP A18-742	BISHOP A18-742 PWB	BISHOP A18-742 (REV-C.0) PWP	Planned	30.00	89.83	430.00	783.71	11.18	944.10	PASS
SEC.07-T06N-R64W	SLOT#07 CARLSON A08-625 (1423'FSL & 844'FEL,SEC.07)	CARLSON A08-625	CARLSON A08-625 PWB	CARLSON A08-625 (REV-C.0) PWP	Planned	30.00	3015.69	700.00	17427.96	11.65	17427.96	PASS
SEC.08-T06N-R64W	SLOT#10 ERICKSON A #8-8 (05-123-23752)	ERICKSON A #8-8 (05-123-23752)	ERICKSON A #8-8 AWB	ERICKSON A #8-8 AWP	Drilling	11888.11	1599.66	11888.11	12076.39	11.88	12076.39	PASS
SEC.07-T06N-R64W	SLOT#22 BISHOP A06-731 (1009'FNL & 508'FEL,SEC.07)	BISHOP A06-731	BISHOP A06-731 PWB	BISHOP A06-731 (REV-B.0) PWP	Planned	30.00	164.52	700.00	3080.38	12.83	3080.38	PASS
SEC.09-T06N-R64W	SLOT#13 Howard USX #A09-09D	Howard USX #A09-09D (05-123-33527)	Howard USX #A09-09D AWB	Howard USX #A09-09D AWP (05-123-33527)	Drilling	16889.83	3067.25	16889.83	17295.92	12.88	17295.92	PASS



Closest Approach Clearance Summary Report

BISHOP A08-685 (REV-C.0) PWP - SPE WPTS Stop Drilling HSE Risk (2017)
Page 5 of 6



REFERENCE WELLPATH IDENTIFICATION			
Operator	NOBLE ENERGY, INC	Well	BISHOP A08-685
Field	WELD COUNTY (NOBLE NAD 83 GRID)	API/Legal	
Facility	SEC.07-T06N-R64W	Wellbore	BISHOP A08-685 PWB
Slot	SLOT#01 BISHOP A08-685 (860'FNL & 439'FEL,SEC.07)		

CALCULATION RANGE & CUTOFF		
From: 30.00ft MD	To: 17427.96ft MD	C-C Cutoff: (none)

OFFSET WELL CLEARANCE SUMMARY (80 Offset Wellpaths selected) Ratios are calculated in Closest Approach plane												
Offset Facility	Offset Slot	Offset Well	Offset Wellbore	Offset Wellpath	Wellbore Status	C-C Clearance Distance			Rule Separation Ratio			
						Ref MD [ft]	Min C-C Clear Dist [ft]	Diverging from MD [ft]	Ref MD of Min Ratio [ft]	Min Ratio	Min Ratio Dvrg from [ft]	Rule Status
SEC.07-T06N-R64W	SLOT#08 CARLSON A08-615 (1422'FSL & 807'FEL,SEC.07)	CARLSON A08-615	CARLSON A08-615 PWB	CARLSON A08-615 (REV-C.0) PWP	Planned	30.00	3010.65	700.00	17427.96	13.61	17427.96	PASS
SEC.09-T06N-R64W	SLOT#06 HOWARD USX A #9-10	HOWARD USX A #9-10 (05-123-24495)	HOWARD USX A #9-10 AWB	HOWARD USX A #9-10 AWP (05-123-24495)	Drilling	15536.41	2958.41	15536.41	15971.05	14.13	15971.05	PASS
SEC.07-T06N-R64W	SLOT#21 BISHOP A06-740 (1008'FNL & 531'FEL,SEC.07)	BISHOP A06-740	BISHOP A06-740 PWB	BISHOP A06-740 (REV-C.0) PWP	Planned	30.00	174.85	700.00	1951.95	14.39	1951.95	PASS
SEC.09-T06N-R64W	SLOT#04 HOWARD USX A #9-11	HOWARD USX A #9-11 (05-123-24496)	HOWARD USX A #9-11 AWB	HOWARD USX A #9-11 AWP (05-123-24496)	Drilling	14371.74	2811.94	14371.74	14817.56	15.15	14817.56	PASS
SEC.09-T06N-R64W	SLOT#12 Howard USX #A09-23	Howard USX #A09-23 (05-123-33526)	Howard USX #A09-23 AWB	Howard USX #A09-23 AWP (05-123-33526)	Drilling	16472.69	3645.11	16472.69	17080.42	15.78	17080.42	PASS
SEC.09-T06N-R64W	SLOT#10 Howard USX #A09-15D	Howard USX #A09-15D (05-123-33522)	Howard USX #A09-15D AWB	Howard USX #A09-15D AWP (05-123-33522)	Drilling	15541.27	4300.35	15541.27	16431.06	19.95	16431.06	PASS
SEC.09-T06N-R64W	SLOT#16 HOWARD USX A #09-12D	HOWARD USX A #09-12D (05-123-33531)	HOWARD USX A #09-12D AWB	HOWARD USX A #09-12D AWP (05-123-33531)	Drilling	13119.47	3071.50	13119.47	13721.31	20.12	13721.31	PASS
SEC.09-T06N-R64W	SLOT#11 Howard USX #A09-14D	Howard USX #A09-14D (05-123-33524)	Howard USX #A09-14D AWB	Howard USX #A09-14D AWP (05-123-33524)	Drilling	14406.74	4181.46	14406.74	15231.14	20.84	15231.14	PASS
SEC.09-T06N-R64W	SLOT#19 HOWARD USX A #9-13	HOWARD USX A #9-13 (05-123-24494)	HOWARD USX A #9-13 AWB	HOWARD USX A #9-13 AWP (05-123-24494)	Drilling	12998.70	4306.53	12998.70	14222.33	26.74	14222.33	PASS
SEC.07-T06N-R64W	SLOT#33 KREPS #1 (05-123-12736)	KREPS #1 (05-123-12736)	KREPS #1 AWB	KREPS #1 AWP	Drilling	4970.31	1453.96	4970.31	6386.02	29.55	6386.02	PASS
SEC.08-T06N-R64W	SLOT#12 UHRICH #44-8 (05-123-14418)	UHRICH #44-8 (05-123-14418)	UHRICH #44-8 AWB	UHRICH #44-8 AWP	Drilling	11729.08	4462.69	11729.08	13202.96	31.17	13202.96	PASS
SEC.08-T06N-R64W	SLOT#05 FRANCEN #23-8 (05-123-21958)	FRANCEN #23-8 (05-123-21958)	FRANCEN #23-8 AWB	FRANCEN #23-8 AWP	Drilling	8871.99	3126.47	8871.99	9941.63	34.68	9941.63	PASS
SEC.07-T06N-R64W	SLOT#20 BRASKALAND A06-756 (642'FNL & 320'FWL,SEC.07)	BRASKALAND A06-756	BRASKALAND A06-756 PWB	BRASKALAND A06-756 (REV-C.0) PWP	Planned	6372.06	2419.75	6372.06	6437.97	41.29	6437.97	PASS
SEC.07-T06N-R64W	SLOT#12 BRASKALAND A18-755 (800'FNL & 319'FWL,SEC.07)	BRASKALAND A18-755	BRASKALAND A18-755 PWB	BRASKALAND A18-755 (REV-C.0) PWP	Planned	6374.61	2295.33	6374.61	6366.70	42.51	6366.70	PASS
SEC.08-T06N-R64W	SLOT#09 MILE HIGH SHEEP #8-32 (05-123-23451)	MILE HIGH SHEEP #8-32 (05-123-23451)	MILE HIGH SHEEP #8-32 AWB	MILE HIGH SHEEP #8-32 AWP	Drilling	30.00	2765.43	7430.00	8570.89	42.94	8570.89	PASS
SEC.08-T06N-R64W	SLOT#13 FRANCEN #24-8 (05-123-14232)	FRANCEN #24-8 (05-123-14232)	FRANCEN #24-8 AWB	FRANCEN #24-8 AWP	Drilling	9192.74	4452.01	9192.74	11216.31	43.72	11216.31	PASS
SEC.08-T06N-R64W	SLOT#18 MILE-HI SHEEP #8-35 (05-123-24252)	MILE-HI SHEEP #8-35 (05-123-24252)	MILE-HI SHEEP #8-35 AWB	MILE-HI SHEEP #8-35 AWP	Drilling	721.68	3421.99	8030.00	9636.49	44.04	9636.49	PASS
SEC.08-T06N-R64W	SLOT#17 MILE HIGH SHEEP #8-33 (05-123-23128)	MILE HIGH SHEEP #8-33 (05-123-23128)	MILE HIGH SHEEP #8-33 AWB	MILE HIGH SHEEP #8-33 AWP	Drilling	245.99	3693.00	7630.00	9711.66	51.28	9711.66	PASS
SEC.07-T06N-R64W	SLOT#19 BRASKALAND A06-765 (665'FNL & 319'FWL,SEC.07)	BRASKALAND A06-765	BRASKALAND A06-765 PWB	BRASKALAND A06-765 (REV-C.0) PWP	Planned	6330.00	2991.81	6330.00	6483.48	53.24	6483.48	PASS
SEC.07-T06N-R64W	SLOT#11 BRASKALAND A18-764 (777'FNL & 319'FWL,SEC.07)	BRASKALAND A18-764	BRASKALAND A18-764 PWB	BRASKALAND A18-764 (REV-C.0) PWP	Planned	6330.00	2877.26	6330.00	6414.14	56.37	6414.14	PASS
SEC.07-T06N-R64W	SLOT#31 ROY CARLSON #43-7 (05-123-21867)	ROY CARLSON #43-7 (05-123-21867)	ROY CARLSON #43-7 AWB	ROY CARLSON #43-7 AWP	Drilling	30.00	2444.60	30.00	7170.44	58.54	7170.44	PASS
SEC.07-T06N-R64W	SLOT#18 BRASKALAND A06-773 (687'FNL & 319'FWL,SEC.07)	BRASKALAND A06-773	BRASKALAND A06-773 PWB	BRASKALAND A06-773 (REV-C.0) PWP	Planned	6330.00	3537.31	6330.00	6510.61	65.82	6510.61	PASS
SEC.07-T06N-R64W	SLOT#10 BRASKALAND A18-773 (755'FNL & 319'FWL,SEC.07)	BRASKALAND A18-773	BRASKALAND A18-773 PWB	BRASKALAND A18-773 (REV-C.0) PWP	Planned	6330.00	3444.77	6330.00	6451.22	70.96	6451.22	PASS
SEC.07-T06N-R64W	SLOT#39 CARLSON #44-7 (05-123-14171)	CARLSON #44-7 (05-123-14171)	CARLSON #44-7 AWB	CARLSON #44-7 AWP (05-123-14171)	Drilling	30.00	3662.99	30.00	9478.73	75.94	9478.73	PASS
SEC.07-T06N-R64W	SLOT#17 BRASKALAND A06-782 (710'FNL & 319'FWL,SEC.07)	BRASKALAND A06-782	BRASKALAND A06-782 PWB	BRASKALAND A06-782 (REV-C.0) PWP	Planned	6230.00	4076.47	6230.00	6591.59	78.56	6591.59	PASS



Closest Approach Clearance Summary Report

BISHOP A08-685 (REV-C.0) PWP - SPE WPTS Stop Drilling HSE Risk (2017)
Page 6 of 6



REFERENCE WELLPATH IDENTIFICATION			
Operator	NOBLE ENERGY, INC	Well	BISHOP A08-685
Field	WELD COUNTY (NOBLE NAD 83 GRID)	API/Legal	
Facility	SEC.07-T06N-R64W	Wellbore	BISHOP A08-685 PWB
Slot	SLOT#01 BISHOP A08-685 (860'FNL & 439'FEL,SEC.07)		

CALCULATION RANGE & CUTOFF		
From: 30.00ft MD	To: 17427.96ft MD	C-C Cutoff: (none)

OFFSET WELL CLEARANCE SUMMARY (80 Offset Wellpaths selected) Ratios are calculated in Closest Approach plane												
Offset Facility	Offset Slot	Offset Well	Offset Wellbore	Offset Wellpath	Wellbore Status	C-C Clearance Distance			Rule Separation Ratio			
						Ref MD [ft]	Min C-C Clear Dist [ft]	Diverging from MD [ft]	Ref MD of Min Ratio [ft]	Min Ratio	Min Ratio Dvrg from [ft]	Rule Status
SEC.07-T06N-R64W	SLOT#09 BRASKALAND A18-782 (732'FNL & 319'FWL,SEC.07)	BRASKALAND A18-782	BRASKALAND A18-782 PWB	BRASKALAND A18-782 (REV-C.0) PWP	Planned	6330.00	4019.84	6330.00	6506.43	85.01	6506.43	PASS
SEC.07-T06N-R64W	SLOT#43 CARLSON #34-7 (05-123-14251)	CARLSON #34-7 (05-123-14251)	CARLSON #34-7 AWB	CARLSON #34-7 AWP	Drilling	407.32	4065.63	630.00	6960.38	87.10	6960.38	PASS
SEC.07-T06N-R64W	SLOT#36 EHRLICH #1 (05-123-12382)	EHRLICH #1 (05-123-12382)	EHRLICH #1 AWB	EHRLICH #1 AWP	Drilling	68.00	4663.97	700.00	6778.77	99.55	6778.77	PASS
SEC.07-T06N-R64W	SLOT#40 EHRLICH #24-7 (05-123-20469)	EHRLICH #24-7 (05-123-20469)	EHRLICH #24-7 AWB	EHRLICH #24-7 AWP	Drilling	313.95	4715.58	313.95	6837.96	99.82	6837.96	PASS
SEC.07-T06N-R64W	SLOT#44 EHRLICH #2 (05-123-12460)	EHRLICH #2 (05-123-12460)	EHRLICH #2 AWB	EHRLICH #2 AWP	Drilling	724.77	5521.01	724.77	6941.37	113.69	6941.37	PASS