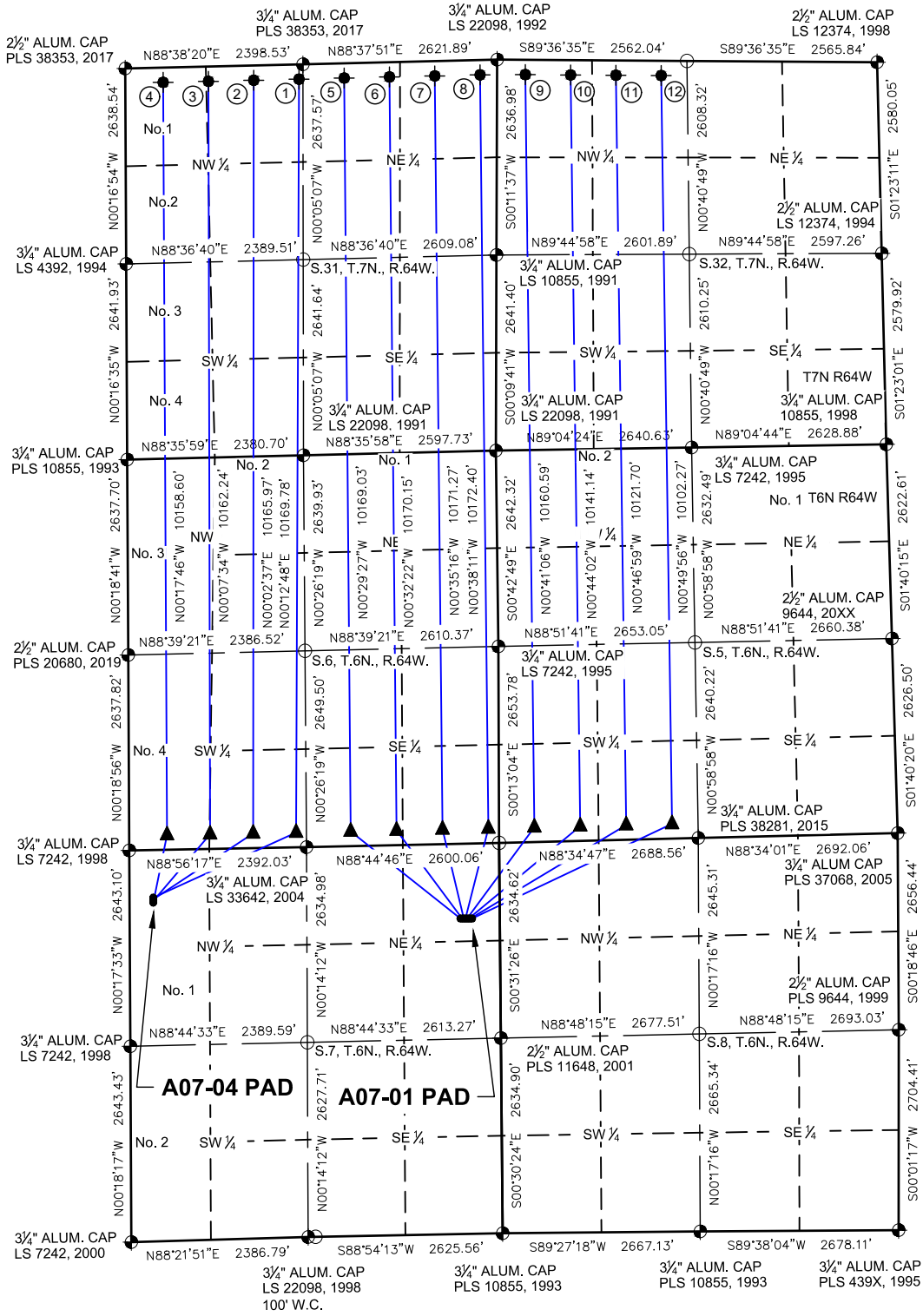
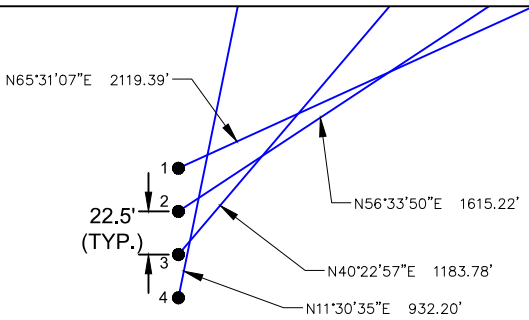


**A07-04 PAD & A07-01 PAD
MULTI-WELL LOCATION PLAT
T6N R64W SECTION 7**



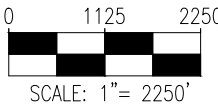
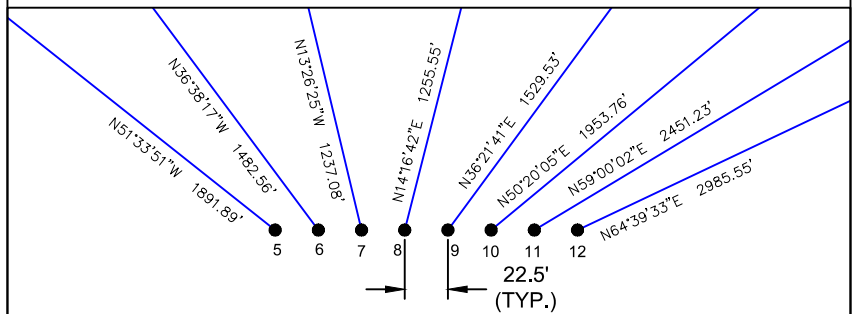
PROPOSED WELLBORE DIRECTION DATA

A07-04 PAD
SLOTS 1-4








PROPOSED WELLBORE DIRECTION DATA

A07-01 PAD
SLOTS 5-12



LEGEND

-  = FOUND MONUMENT
  = BOTTOM HOLE
 = CALCULATED POSITION
  = TOP OF PRODUCTIVE ZONE
 = PROPOSED WELL

Notes:

- 1) All bearings are Grid Bearings of the Colorado State Plane Coordinate System, North Zone, North American Datum 1983/2011. The lineal dimensions as shown herein are grid distances based upon the "U.S. Survey Foot." To get ground distances multiply shown distance by 1.000257.
- 2) Distances are measured at 90° from section line of the Sixth Principal Meridian, County of Weld, State of Colorado.
- 3) Ground elevations are based on an observed GPS elevation (NAVD 1988 DATUM).
- 4) Surface use: "IRRIGATED CROP LAND"
- 5) Instrument Operator: LOGAN THIELBERT
- 6) This map does not represent a boundary survey.

DISCLAIMER:
THIS PLOT DOES NOT REPRESENT A MONUMENTED LAND SURVEY AND SHOULD NOT BE RELIED UPON TO DETERMINE BOUNDARY LINES, PROPERTY OWNERSHIP OR OTHER PROPERTY INTERESTS. PARCEL LINES, IF DEPICTED HAVE NOT BEEN FIELD VERIFIED AND MAY BE BASED UPON PUBLICLY AVAILABLE DATA THAT ALSO HAS NOT BEEN INDEPENDENTLY VERIFIED.

SHEET 2 OF 4

SURFACE HOLE LOCATION									TOP OF PRODUCTIVE ZONE		BOTTOM HOLE LOCATION	
SLOT	WELL NAME	LATITUDE	LONGITUDE	FOOTAGE		QTR-QTR	ELEV.	PDOP	FOOTAGE		FOOTAGE	
1	BRASKALAND A06-756	40.505863°N	104.600488°W	642' FNL	320' FWL	NO.1, NW	4723'	1.5	200' FSL	2253' FWL	200' FNL	2343' FWL
2	BRASKALAND A06-765	40.505801°N	104.600489°W	665' FNL	319' FWL	NO.1, NW	4724'	1.5	200' FSL	1672' FWL	200' FNL	1732' FWL
3	BRASKALAND A06-773	40.505739°N	104.600490°W	687' FNL	319' FWL	NO.1, NW	4724'	1.5	200' FSL	1091' FWL	200' FNL	1121' FWL
4	BRASKALAND A06-782	40.505678°N	104.600491°W	710' FNL	319' FWL	NO.1, NW	4724'	1.5	200' FSL	510' FWL	200' FNL	510' FWL
5	BISHOP A06-740	40.504972°N	104.585587°W	1008' FNL	531' FEL	NENE	4743'	1.5	200' FSL	2003' FEL	200' FNL	2063' FEL
6	BISHOP A06-731	40.504971°N	104.585506°W	1009' FNL	508' FEL	NENE	4743'	1.5	200' FSL	1383' FEL	200' FNL	1452' FEL
7	BISHOP A06-722	40.504971°N	104.585425°W	1009' FNL	486' FEL	NENE	4744'	1.5	200' FSL	763' FEL	200' FNL	841' FEL
8	BISHOP A06-712	40.504970°N	104.585344°W	1010' FNL	463' FEL	NENE	4744'	1.5	200' FSL	143' FEL	200' FNL	230' FEL
9	BISHOP A05-783	40.504970°N	104.585263°W	1010' FNL	441' FEL	NENE	4744'	1.5	200' FSL	476' FWL	200' FNL	381' FWL
10	BISHOP A05-773	40.504969°N	104.585182°W	1011' FNL	418' FEL	NENE	4744'	1.5	200' FSL	1096' FWL	200' FNL	993' FWL
11	BISHOP A05-764	40.504968°N	104.585101°W	1011' FNL	396' FEL	NENE	4745'	1.5	200' FSL	1716' FWL	200' FNL	1604' FWL
12	BISHOP A05-755	40.504968°N	104.585020°W	1012' FNL	373' FEL	NENE	4745'	1.5	200' FSL	2335' FWL	200' FNL	2215' FWL



8620 Wolff Court
Westminster, CO 80031
(303) 928-7128
www.ascentgeomatics.com

FIELD
DATE:
09-29-23

DRAWN BY:
CSG

DRAWING
DATE:
10-02-23

CHECKED BY:
HJL

SURFACE LOCATION:
SEC. 7, T6N, R64W, 6TH P.M.
WELD COUNTY, COLORADO

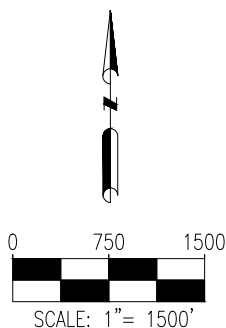
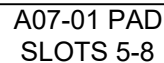
PUBLICLY AVAILABLE DATA SOURCES HAVE NOT BEEN INDEPENDENTLY VERIFIED BY ASCENT.






A07-04 PAD

A07-01 PAD

A07-04 PAD
SLOTS 1-4



LEGEND

- = FOUND MONUMENT
 = BOTTOM HOLE
 = CALCULATED POSITION
  = TOP OF PRODUCTIVE ZONE
 = PROPOSED WELL

Notes:

- 1) All bearings are Grid Bearings of the Colorado State Plane Coordinate System, North Zone, North American Datum 1983/2011. The lineal dimensions as shown herein are grid distances based upon the "U.S. Survey Foot." To get ground distances multiply shown distance by 1.000257.
- 2) Distances are measured at 90° from section line of the Sixth Principal Meridian, County of Weld, State of Colorado.
- 3) Ground elevations are based on an observed GPS elevation (NAVD 1988 DATUM).
- 4) Surface use: "IRRIGATED CROP LAND"
- 5) Instrument Operator: LOGAN THIELBERT
- 6) This map does not represent a boundary survey.

DISCLAIMER:
THIS PLOT DOES NOT REPRESENT A MONUMENTED LAND SURVEY AND SHOULD NOT BE RELIED
UPON TO DETERMINE BOUNDARY LINES, PROPERTY OWNERSHIP OR OTHER PROPERTY
INTERESTS. PARCEL LINES, IF DEPICTED HAVE NOT BEEN FIELD VERIFIED AND MAY BE BASED
UPON PUBLICLY AVAILABLE DATA THAT ALSO HAS NOT BEEN INDEPENDENTLY VERIFIED.

SHEET 3 OF 4

SURFACE HOLE LOCATION									TOP OF PRODUCTIVE ZONE		BOTTOM HOLE LOCATION	
SLOT	WELL NAME	LATITUDE	LONGITUDE	FOOTAGE		QTR-QTR	ELEV.	PDOP	FOOTAGE		FOOTAGE	
1	BRASKALAND A18-755	40.505616°N	104.600491°W	800' FNL	319' FWL	NO.1, NW	4724'	1.5	200' FNL	2338' FWL	200' FSL	2301' FWL
2	BRASKALAND A18-764	40.505554°N	104.600492°W	777' FNL	319' FWL	NO.1, NW	4724'	1.5	200' FNL	1757' FWL	200' FSL	1703' FWL
3	BRASKALAND A18-773	40.505492°N	104.600493°W	755' FNL	319' FWL	NO.1, NW	4724'	1.5	200' FNL	1176' FWL	200' FSL	1105' FWL
4	BRASKALAND A18-782	40.505431°N	104.600494°W	732' FNL	319' FWL	NO.1, NW	4724'	1.5	200' FNL	595' FWL	200' FSL	508' FWL
5	BISHOP A18-742	40.505384°N	104.585581°W	858' FNL	529' FEL	NENE	4740'	1.4	200' FNL	2073' FEL	200' FSL	2143' FEL
6	BISHOP A18-733	40.505383°N	104.585500°W	859' FNL	507' FEL	NENE	4740'	1.4	200' FNL	1492' FEL	200' FSL	1546' FEL
7	BISHOP A18-724	40.505383°N	104.585419°W	859' FNL	484' FEL	NENE	4741'	1.4	200' FNL	911' FEL	200' FSL	948' FEL
8	BISHOP A18-715	40.505382°N	104.585339°W	860' FNL	462' FEL	NENE	4741'	1.4	200' FNL	350' FEL	200' FSL	350' FEL



FIELD
DATE:
09-29-23

DRAWN BY:
CSG

DRAWING
DATE:
10-02-23

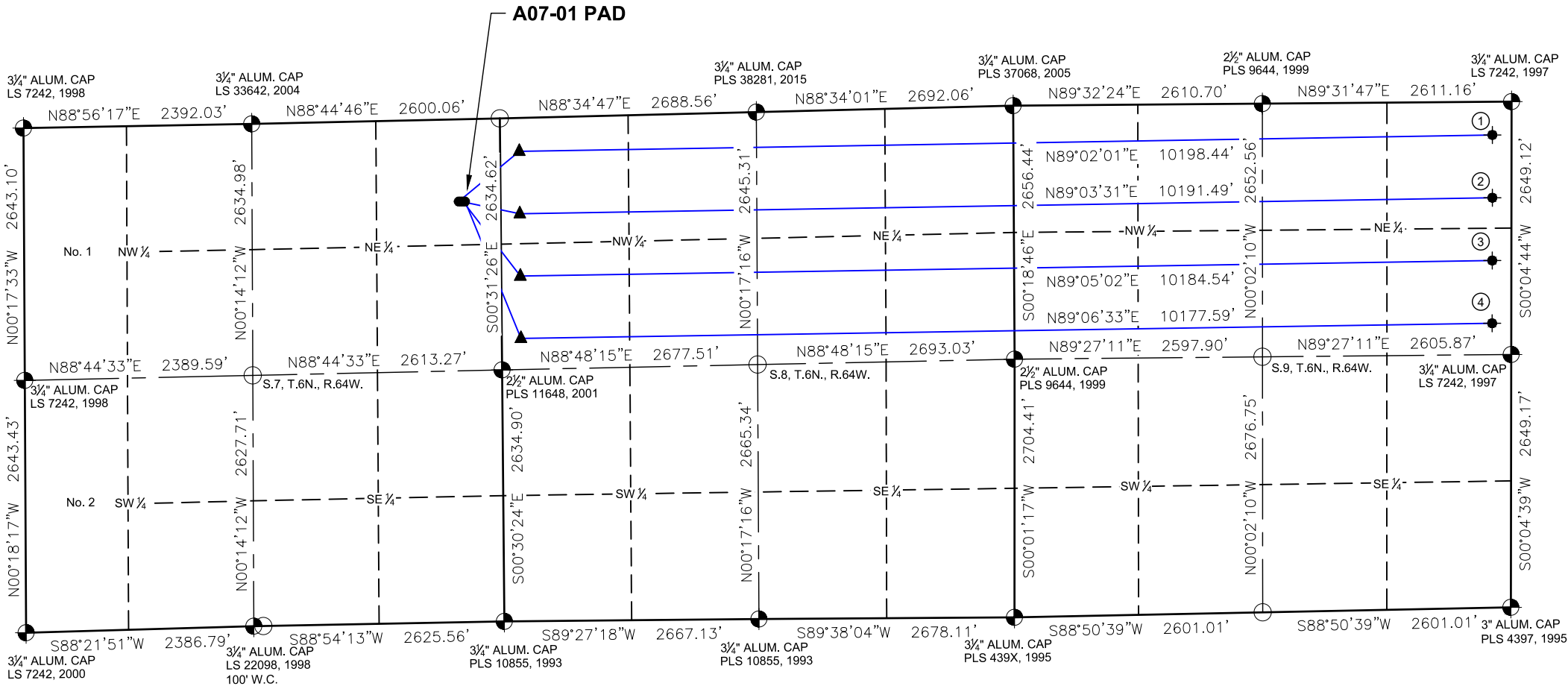
CHECKED BY:
HJL

SURFACE LOCATION:
SEC. 7, T6N, R64W, 6TH P.M.
WELD COUNTY, COLORADO

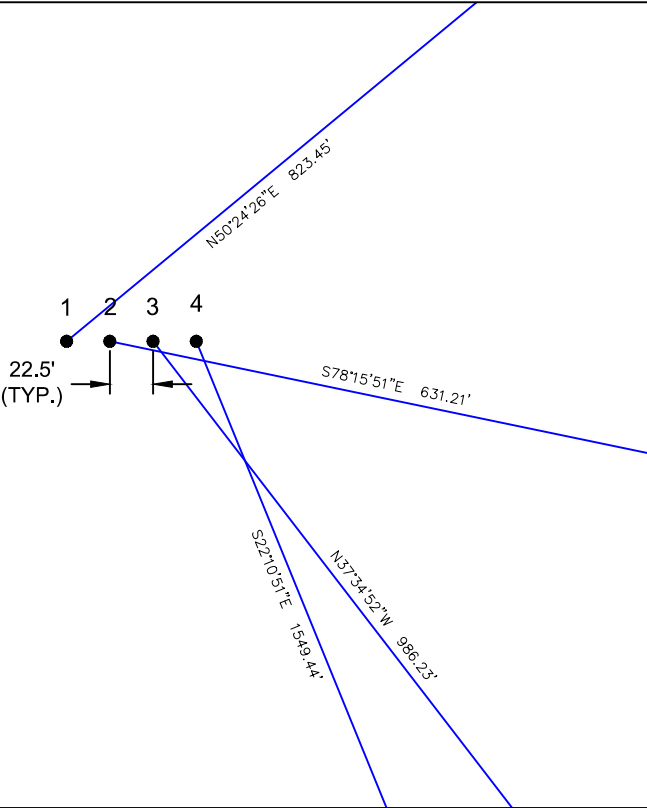
PUBLICLY AVAILABLE DATA SOURCES HAVE NOT BEEN INDEPENDENTLY VERIFIED BY ASCENT.



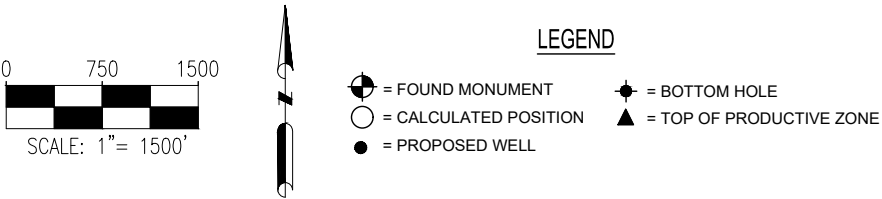
A07-01 PAD
MULTI-WELL LOCATION PLAT
T6N R64W SECTION 7



PROPOSED WELLBORE DIRECTION DATA
A07-01 PAD
SLOTS 1-4



SHEET 4 OF 4



Notes:

- 1) All bearings are Grid Bearings of the Colorado State Plane Coordinate System, North Zone, North American Datum 1983/2011. The lineal dimensions as shown herein are grid distances based upon the "U.S. Survey Foot." To get ground distances multiply shown distance by 1.000257.
- 2) Distances are measured at 90° from section line of the Sixth Principal Meridian, County of Weld, State of Colorado.
- 3) Ground elevations are based on an observed GPS elevation (NAVD 1988 DATUM).
- 4) Surface use: "IRRIGATED CROP LAND"
- 5) Instrument Operator: LOGAN THIELBERT
- 6) This map does not represent a boundary survey.

SURFACE HOLE LOCATION

TOP OF PRODUCTIVE ZONE

BOTTOM HOLE LOCATION

SLOT	WELL NAME	LATITUDE	LONGITUDE	FOOTAGE		QTR-QTR	ELEV.	PDOP	FOOTAGE		FOOTAGE	
1	BISHOP A08-685	40.505381°N	104.585258°W	860' FNL	439' FEL	NENE	4741'	1.4	350' FNL	200' FWL	348' FNL	200' FEL
2	BISHOP A08-675	40.505381°N	104.585177°W	861' FNL	417' FEL	NENE	4741'	1.4	1003' FNL	200' FWL	1006' FNL	200' FEL
3	BISHOP A08-665	40.505380°N	104.585096°W	861' FNL	394' FEL	NENE	4742'	1.4	1656' FNL	200' FWL	1663' FNL	200' FEL
4	BISHOP A08-655	40.505379°N	104.585015°W	862' FNL	372' FEL	NENE	4742'	1.4	2309' FNL	200' FWL	2321' FNL	200' FEL



FIELD DATE:
09-29-23
DRAWN BY:
CSG

DRAWING DATE:
10-02-23
CHECKED BY:
HJL

SURFACE LOCATION:
SEC. 7, T6N, R64W, 6TH P.M.
WELD COUNTY, COLORADO

DISCLAIMER:
THIS PLOT DOES NOT REPRESENT A MONUMENTED LAND SURVEY AND SHOULD NOT BE RELIED UPON TO DETERMINE BOUNDARY LINES, PROPERTY OWNERSHIP OR OTHER PROPERTY INTERESTS. PARCEL LINES, IF DEPICTED HAVE NOT BEEN FIELD VERIFIED AND MAY BE BASED UPON PUBLICLY AVAILABLE DATA THAT ALSO HAS NOT BEEN INDEPENDENTLY VERIFIED.

PUBLICLY AVAILABLE DATA SOURCES HAVE NOT BEEN INDEPENDENTLY VERIFIED BY ASCENT.

